



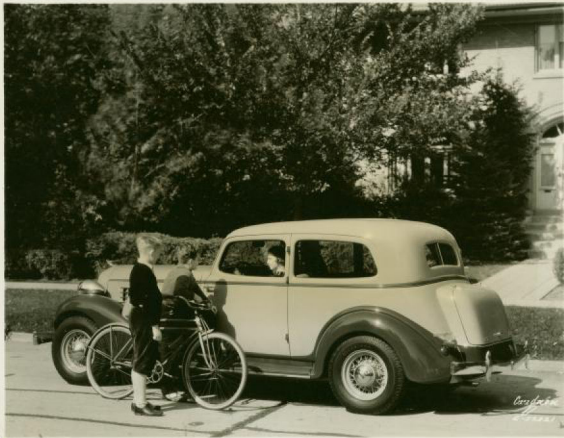
AUBURN'S NEW 1935 STRAIGHT EIGHT FOUR DOOR SEDAN

This smart appearing car is built on 127 inch wheelbase powered with 115 horsepower Lycoming engine and has such features as 4 wheel hydraulic brakes; X plus A chassis frame; all steel unit weld body structure; new type shock absorbers; air cooled generator; low center of gravity; 16 inch wheels; Dual Ratio. It is a big roomy car with luxurious interiors designed above the mass class.



AUBURN'S NEW 1935 SIX CYLINDER CABRIOLET

The smart car shown above is an Auburn Six Cabriolet finished in Palm Beach exterior and red leather upholstery. This car is built on 120 inch wheelbase and its smart distinctive lines make it very popular among the young folk. Top may be lowered and disappears completely. Windshield is hinged and door glasses may be left raised when top is down. It has a world of speed and snap in performance. Other features are 4 wheel hydraulic brakes; X plus A chassis frame; all steel unit weld body structure; new type shock absorbers; air cooled generator; low center of gravity; 16 inch wheels; Dual Ratio.



AUBURN'S NEW 1935 STRAIGHT EIGHT TWO DOOR BROUGHAM

This smart appearing car is built on 127 inch wheelbase powered with 115 horsepower Lycoming engine and has such features as 4 wheel hydraulic brakes; X-plus-A chassis frame; all steel unit weld body structure; new type shock absorbers; air cooled generator; low center of gravity; 16-inch wheels; Dual Ratio. It is a big roomy car with luxurious interiors designed above the mass class.

18719

