

NEW!

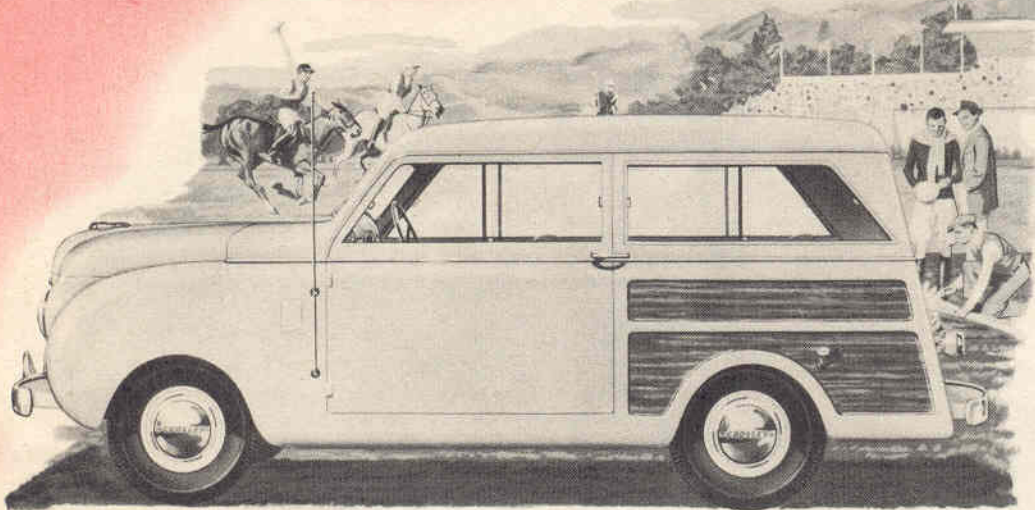
... SMART! ...

PRACTICAL!



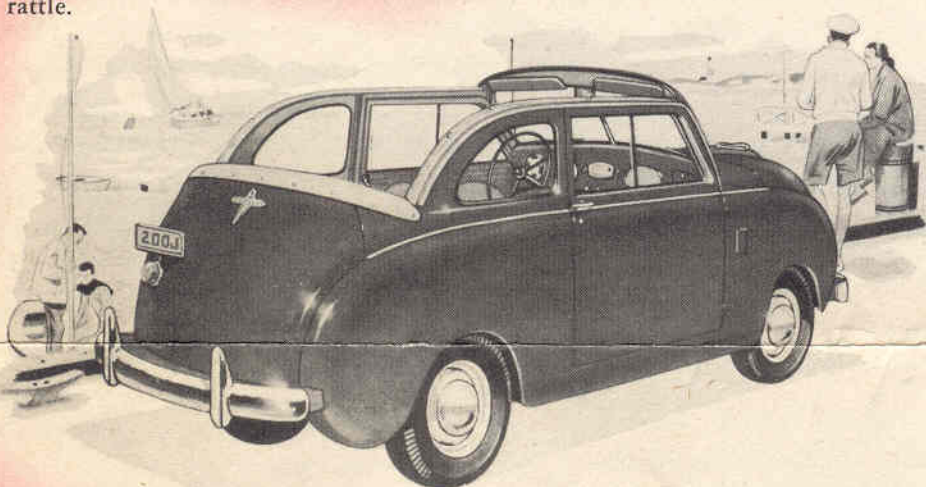
CROSLEY

STATION WAGON



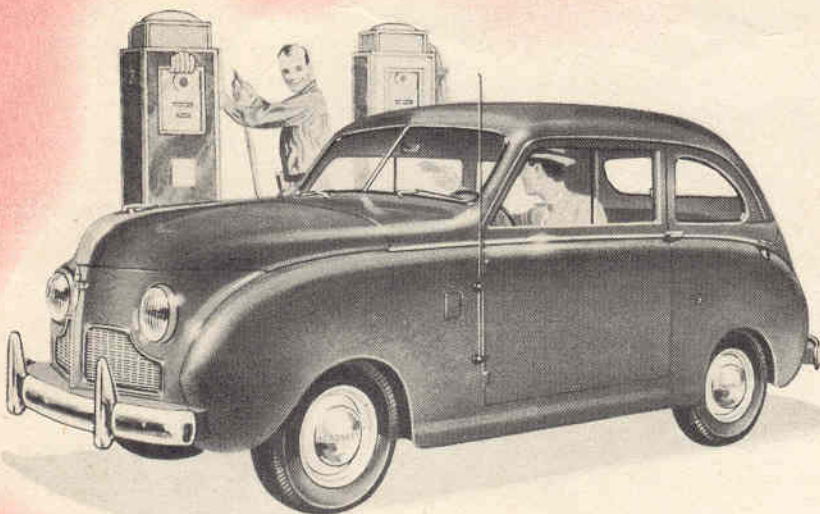
CROSELY STATION WAGON

Seats four with plenty of luggage space. Rear seat removable. Entire rear end opens for easy loading. All steel—no wood to rot, swell, shrink or rattle.



CROSELY CONVERTIBLE

Smartest thing on wheels! Carries four husky passengers plus baggage. Easy to manage laminated top snaps into place in a jiffy.



CROSELY SEDAN

Needs no introduction. Thousands already on the road. Constantly improved in both beauty and performance. Styled with an "aircraft flavor." Four passenger. For all around use.

THERE'S A

Crosley

FOR YOU!

SPECIFICATIONS

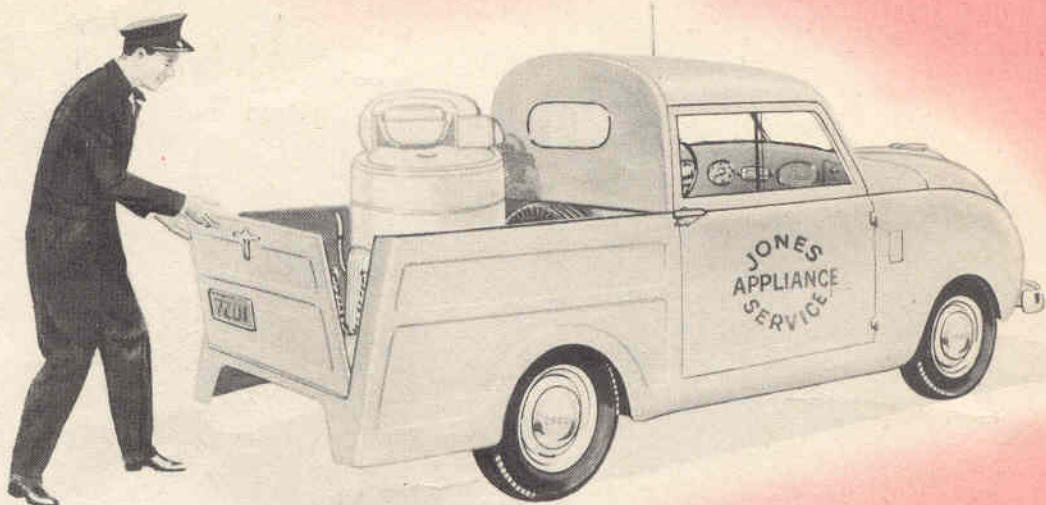
Overall Length	145 inches
Overall Width	49 inches
Overall Weight (with spare tire, gas, oil and water)	1155 pounds
Height	59 inches
Wheelbase	80 inches
Cruising Speed	50 m.p.h.
Gas Tank Capacity	6.5 gals.
Brakes	4 wheel
Type Brakes	Self-equalizing
Oil Capacity	2 quarts
Oil Filter Capacity	4/5 quart
*Body	All steel
Turning Radius	15 feet
Engine	Crosley COBRA
Cylinders	4
Cooling	Liquid
Type Engine	Valve-in-head
Horsepower	Up to 26.5
Compression Ratio	7 1/2 to 1
Gasoline Mileage	35-50 m.p.g.
Tire Size	4.50 x 12 inches
Main Bearings	5
Lubrication	Pressure
Radiator	Tubular
Radiator Capacity	4 quarts
With Standard Heater	5 quarts

*Convertible and Sports-Utility have fabric tops.

 **CROSLEY**

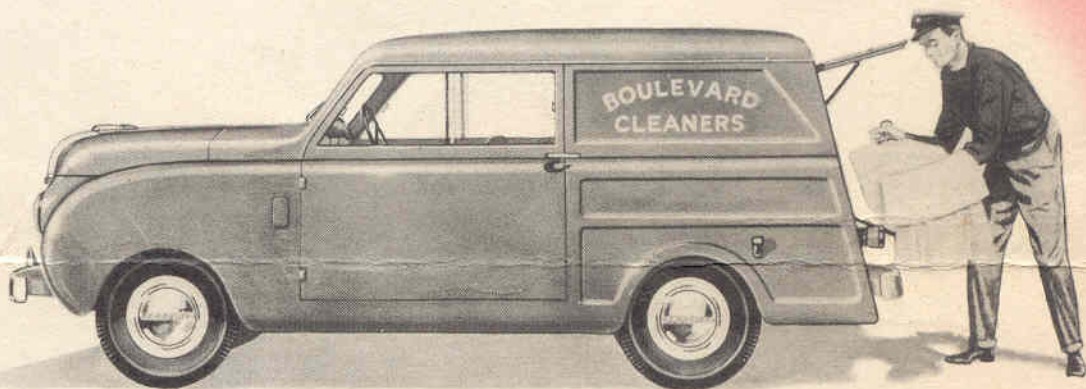
a FINE car

MANUFACTURED BY CROSLEY MOTORS, INC.
CINCINNATI 14, OHIO, U. S. A.



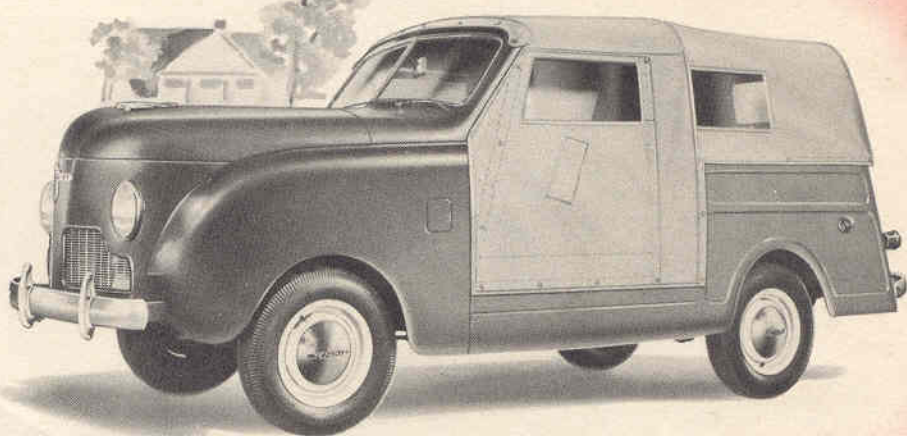
CROSELY PICK-UP

Full quarter ton capacity. Drop tail gate. Roomy, comfortable cab. Amazingly economical. Cuts operating and delivery costs. Perfect for all service men, farms, city and country places.



CROSELY PANEL DELIVERY

Want to save money on light deliveries? Grocers, druggists, dry cleaners —appliance, hardware and other service stores report sensationally low operating costs. Plenty of space for your advertisement on the sides.



CROSELY SPORTS-UTILITY

A truly amazing value! Newest, and lowest priced of all Crosleys. Rear seat is available. Quarter-ton capacity for utility use. Fabric top and sides go on snug and tight in "no time."



"I believe that every American who can afford ANY car should have an opportunity to buy a brand new, truly FINE car."

Powell Crosley, Jr.
President,
Crosley Motors, Inc.

TODAY, more than ever before, there's a need for a car that is easy to buy, easy to maintain and easy to drive. Most cars advertised as "low price" are not low priced at all. They are big, heavy, expensive to buy and expensive to keep up. And they're getting bigger and more expensive all the time. Until the introduction of the Crosley, most Americans had to look to the used car lots to find automobiles they could afford.

But now, anyone able to afford any car, new or used, can afford a new car. The low price of the new, fine Crosley is due to its radically different design, and NOT to any skimping on quality.

Powel Crosley, Jr., reasoned thus: "The so-called 'low price' cars on the market today have engines more powerful than those in all but the most costly cars of fifteen years ago. They need such engines because much of the power is not used to transport passengers or 'pay load,' but to move a ton or more of excess steel, required to make these cars 'bigger' than their competitors."

And Mr. Crosley dreamed of a new type of car — a car not based on old-fashioned ideas or prejudices, but a new kind of car. A light car. A sensible car. A car that would do its job of getting you there economically and comfortably. The result: The new, fine Crosley.

WHAT DO YOU WANT MOST IN A CAR?

SIZE? Crosley has it where you want it—not with bulging bumpers or flaring fenders, but plenty inside—where roominess counts.

EASY DRIVING? Even timid drivers lose their fear of traffic in a Crosley. So light and easy to handle, and parks "on a dime." It's 20 inches narrower and weighs only about a third as much as other so-called light cars.

VALUE? Lots of cars are called "low cost," but Crosley really IS! Compare, and see for yourself!

ECONOMY? Crosley gives 35 to 50 miles per gallon of gasoline. That's because Crosley has no needless weight to move around.

SAFETY? It's all steel. Has the lowest center of gravity of any car, so it's almost impossible for a Crosley to turn over. And Crosley's narrow width makes your side of the road 20 inches wider.

POWER? The startling Crosley COBRA 4-cylinder, valve-in-head, copper brazed steel engine weighs only 59 pounds, yet gives flashing pickup, eager speed.