



# AS BIG AS YOU NEED IT TO BE.

With Savana, you can share your good times with your whole family, a large circle of friends or a young soccer team. The passenger van offers you a choice of either a 135-inch wheelbase or a 155-inch wheelbase. Depending on your needs, you can specify seating for 5, 8, 12 or even 15 passengers. And they're each assured ample head- and elbow-room to make any trip pleasant and comfortable. With Savana's state-of-the-art chassis and full-length box frame construction, they'll also be treated to a smooth, luxurious ride.



5-Passenger Seating  
135" Wheelbase



8-Passenger Seating  
135" Wheelbase



12-Passenger Seating  
135" Wheelbase



12-Passenger Seating  
155" Wheelbase



15-Passenger Seating  
155" Wheelbase



Available 8-passenger seating configuration shown.

Model	Passenger Seating			
	5	8	12	15
1500				
135" WHEELBASE	A	S	-	-
2500				
135" WHEELBASE	-	A	S	-
155" WHEELBASE	-	-	S	-
3500				
135" WHEELBASE	-	A	S	-
155" WHEELBASE	-	-	S	A

## Savana: Wheel Options

Savana is offered with a wide variety of wheels designed to enhance its appearance and provide the durability to keep you rolling.



**Steel Wheel**  
With black center cap,  
standard on SL models.



**Steel Wheel**  
With bright trim ring and  
chrome center cap,  
standard on SLE models.



**Chrome Styled Wheel**  
With black center cap,  
available for 1500 models only.



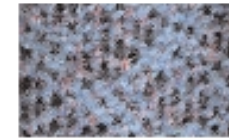
**Cast Aluminum Wheel**  
With matching center cap,  
available for 1500 models only.

Not Shown: 6-lug steel wheel with black center cap (standard on 2500 series); 8-lug steel wheel with black center cap (standard on 3500 series). Both offer optional bright trim ring and chrome center cap. Please refer to page 21 for wheel availability.

## Color and Trim: Interior



Medium Neutral



Navy



Medium Dark Pewter

Custom Cloth standard on SLE models



Medium Neutral

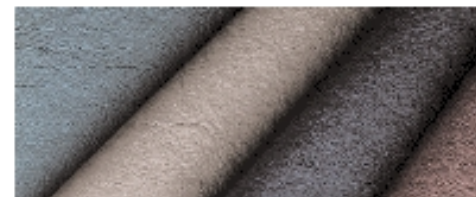


Navy



Medium Dark Pewter

Custom Vinyl standard on SL models



Optional Leather

Conversion manufacturers offer a wide variety of options.

## Color and Trim: Exterior



**Storm Gray Metallic**

Interior Trim:	Navy	Medium Dark Pewter	Medium Neutral
	•	•	•



**Summit White**

Interior Trim:	Navy	Medium Dark Pewter	Medium Neutral
	•	•	•



**Fernmist Green Metallic**

Interior Trim:	Navy	Medium Dark Pewter	Medium Neutral
		•	•



**Dark Bronzemist Metallic**

Interior Trim:	Navy	Medium Dark Pewter	Medium Neutral
			•



**Dark Toreador Red Metallic**

Interior Trim:	Navy	Medium Dark Pewter	Medium Neutral
		•	•



**Light Autumnwood Metallic**

Interior Trim:	Navy	Medium Dark Pewter	Medium Neutral
		•	•



**Indigo Blue Metallic**

Interior Trim:	Navy	Medium Dark Pewter	Medium Neutral
	•	•	•



**Onyx Black**

Interior Trim:	Navy	Medium Dark Pewter	Medium Neutral
		•	•



**Fire Red**

Interior Trim:	Navy	Medium Dark Pewter	Medium Neutral
		•	•

## Equipment: Interior

Interior		SL	SLE		SL	SLE
S=Standard A=Available						
AIR BAGS Driver and front passenger <sup>1</sup>		S	S	LIGHTING Front, center and rear dome lamps, console storage and ashtray lamp	S	S
AIR CONDITIONING, FRONT (non-CFC refrigerant)		S	S	LIGHTING, AUXILIARY Reading lamps, stepwell lamps and underhood lamp	A	S
AIR CONDITIONING AND HEATER, REAR Includes front and rear controls with driver override (non-CFC refrigerant)		A	A	MIRROR, REARVIEW With day-night feature	S	S
ASSIST HANDLE For front passenger entry and exit		S	S	POWER OUTLET: Located in front console, passenger side	S	S
AUDIO SYSTEMS				POWER WINDOWS AND DOOR LOCKS Includes express-down feature on driver's window	A	S
AM/FM stereo (UM7)—includes seek and scan feature, digital clock and 4 premium speakers		S	S	SAFETY BELTS, FRONT Height-adjustable outboard seating position lap and shoulder belts	S	S
AM/FM stereo with cassette player (UM6)—includes seek and scan feature, digital clock and 4 premium speakers		A	A	SAFETY BELTS, CENTER AND REAR Outboard seating position lap and shoulder belts with child comfort guides, and center seating position lap belts	S	S
AM/FM stereo with cassette player (ULO)—includes seek and scan feature, digital clock and 8 premium speakers, auto reverse, Dolby® noise reduction, automatic tone control, Theftlock® feature, speed sensitive volume and power antenna (requires power windows and door locks)		A	A	SEAT FABRIC Custom Vinyl	S	
AM/FM stereo with CD player (UNO)—includes seek and scan feature, digital clock and 8 premium speakers, automatic tone control, Theftlock feature, speed sensitive volume and power antenna (requires power windows and door locks)		A	A	Custom Cloth with vinyl side and seatbacks	A	S
AM/FM stereo with cassette and CD player (UPO)—includes seek and scan feature, digital clock and 8 premium speakers, auto reverse, Dolby noise reduction, automatic tone control, Theftlock feature, speed sensitive volume and power antenna (requires power windows and door locks)		A	A	SEATS, FRONT		
CHILD SEAT TOP TETHER ANCHOR		S	S	Vinyl high-back reclining bucket seats with integral head restraints	S	
CHILD SECURITY DOOR LOCKS Sliding or 60/40 swing-out side door and rear cargo doors		S	S	Cloth high-back reclining bucket seats with inboard armrests and integral head restraints; includes seatback pocket	A	S
CIGARETTE LIGHTER Located in front console, driver side		S	S	SEATS, CENTER		
CONSOLE, FRONT Includes ashtray, cigarette lighter, two cupholders and storage compartment for CDs or cassettes <sup>2</sup>		S	S	3-passenger vinyl benches with safety belt child comfort guides on outboard seating positions <sup>3</sup>	S	
CRUISE CONTROL AND TILT STEERING		A	S	3-passenger cloth benches with safety belt child comfort guides on outboard seating positions <sup>3</sup>		S
DOOR PANELS				SEATS, REAR		
Interior-colored molded plastic with front door map pockets		S		4-passenger vinyl bench with safety belt child comfort guides on outboard seating positions	S	
Interior-colored molded plastic with front door map pockets and carpeted lower			S	4-passenger cloth bench with safety belt child comfort guides on outboard seating positions		S
FLOOR COVERING Black full-floor vinyl mat		S		SEATS, POWER		
Full-floor, interior-colored carpet		A	S	6-way power driver seat (requires cloth seats)	A	A
FLOOR MATS Interior-colored rubber for all seating positions			S	6-way power driver and front passenger seats (requires cloth seats)	A	A
GAUGES Speedometer, odometer, oil pressure, voltmeter, fuel level, engine temperature and trip odometer		S	S	STEERING WHEEL		
HEADLAMP WARNING Lights-on warning tone		S	S	Deluxe 4-spoke steering wheel in Graphite	S	S
HEADLINER Interior-colored cloth		S	S	Leather-wrapped deluxe 4-spoke steering wheel in Graphite	A	A
HEATER/DEFOGGER Includes rear heater ducts and side window defoggers		S	S	Tilt capability and cruise control	A	S
				SUNSHADES Cloth-covered	S	
				Cloth-covered with passenger-side visor mirrors		S
				Cloth-covered with driver- and passenger-side illuminated visor mirrors		A
				TOP TETHER ANCHOR	S	S

## Equipment: Exterior.Mechanical

Exterior					
		SL	SLE		
S=Standard A=Available				SL	SLE
BUMPER, FRONT					
Gray	S				
Chrome, with black step pad		S			
BUMPER, REAR					
Gray, with black step pad and entry assist step	S				
Chrome, with black step pad and entry assist step			S		
CENTER HIGH-MOUNTED STOP LAMP	S	S			
DOORS, SIDE					
60/40 swing-out side doors (41.5" opening width)	S	S			
Sliding side door (40.8" opening width)	A	A			
DOORS, REAR Cargo doors (56.9" opening width)	S	S			
GRILLE ACCENTS					
Gray grille and headlamp bezels	S				
Deluxe gray grille with bright trim ring			S		
HEADLAMPS					
Single rectangular halogen	S				
Dual halogen composite	A	S			
Daytime Running Lamps	S	S			
MIRRORS Black foldaway with manual remote adjustment	S				
Heated black foldaway with power remote adjustment (requires power windows and door locks)	A	S			
				MOLDING Gray bodyside molding	S
				REMOTE KEYLESS ENTRY Includes two transmitters (requires power windows and door locks)	A S
				SIDE DOOR BEAMS Driver, front passenger and side doors	S S
				TIRE AND WHEEL, SPARE:	
				Fullsize, located under rear of the vehicle	S S
				Tires: Five all-season blackwall steel-belted radial tires	S S
				WHEELS	
				Steel wheel with black center cap <sup>4</sup>	S
				Steel wheel with bright center cap and trim ring <sup>5</sup>	A S
				Chrome wheel (1500 models only)	A A
				Aluminum wheel (1500 models only)	A A
				WINDOW EQUIPMENT	
				Light-tinted Solar-Ray <sup>®</sup> glass on all windows	S S
				Deep-tinted Solar-Ray glass on all windows except windshield and front doors	A A
				Intermittent windshield wipers/washer	S S
				Swing-out glass for sliding or 60/40 side doors and driver-side front quarter window	S S

Mechanical					
		SL	SLE		
S=Standard A=Available				SL	SLE
BATTERY Delco <sup>®</sup> Freedom <sup>®</sup> 600 cold cranking amps, dual with diesel engine	S	S			
BRAKE/TRANSMISSION SHIFT INTERLOCK Automatic transmission safety feature	S	S			
BRAKES Front disc, rear drum with 4-wheel antilock feature, including nonasbestos brake pads and audible front brake wear sensors	S	S			
COLD CLIMATE PACKAGE Includes engine block heater and antifreeze protection to -34 <sup>°</sup> F (gasoline engines only)	A	A			
COOLANT Long-life engine coolant (up to 5-year/150,000-mile change interval) <sup>6</sup>	S	S			
				DIFFERENTIAL, LOCKING REAR <sup>7</sup>	A A
				EXHAUST SYSTEM Stainless steel, with aluminized muffler exterior and tailpipe	S S
				ON-BOARD DIAGNOSTICS, SECOND GENERATION (OBDII)	S S
				PASSLOCK THEFT DETERRENT SYSTEM	S S
				POWER STEERING	S S
				STEERING COLUMN Energy-absorbing steering column, including steel sleeve theft deterrent locking feature	S S
				TRAILERING PACKAGE Heavy duty, including 8-wire harness, weight-distributing platform hitch and heavy duty flasher	A A

**A NOTE ON CONVERSION VANS:**  
Your GMC dealer can help you select from a wide range of conversion packages available for Savana, or even help you design your own custom conversion, using GMC quality-approved conversion manufacturers. Ask your dealer about Savana models and packages that make it conversion-ready. See "An important note about alterations and warranties" on page 24.

For specification details and other equipment available, see your GMC dealer. Some of the available features listed here may be included in, or ordered only with, specific marketing packages or special packages.

<sup>1</sup> Always use safety belts and proper child restraints, even with air bags. See the *Owner's Manual* for more safety information and refer to "A Note on Child Safety" on page 24.

<sup>2</sup> CD/cassette storage compartment not included with UM7 radio.

<sup>3</sup> Two benches for 8- or 12-passenger seating; three benches for 15-passenger seating. See page 13.

<sup>4</sup> 6-lug standard on 2500 series; 8-lug standard on 3500 series.

<sup>5</sup> 6-lug available on 2500 series; 8-lug available on 3500 series.

<sup>6</sup> Maintenance needs vary with different uses and driving conditions. See the *Owner's Manual* for more information.

<sup>7</sup> Limited to certain axle ratios. See your dealer for details.

## Specifications: Engine . Standard Technical Data . Dimensions . Trailering

Engine Specifications	ENGINE	Vortec 4300	Vortec 5000	Vortec 5700	Vortec 7400	6.5L V8 turbo diesel
FUEL TYPE	Gasoline	Gasoline	Gasoline	Gasoline	Gasoline	Diesel
CAPACITY/CONFIGURATION/CYLINDERS	4.3L V6	5.0L V8	5.7L V8	7.4L V8	6.5L V8	6.5L V8
ORDERING CODE	L35	L30	L31	L29	L65	
CUBIC-INCH DISPLACEMENT	262	305	350	454	395	
BORE AND STROKE (mm)	101.60 x 88.39	95.00 x 88.39	101.60 x 88.39	107.95 x 101.60	103.00 x 97.03	
COMPRESSION RATIO	9.2:1	9.4:1	9.4:1	8.9:1	19.5:1	
VALVE TRAIN	Overhead valve	Overhead valve	Overhead valve	Overhead valve	Overhead valve	Overhead valve
FUEL DELIVERY	Sequential fuel injection	Sequential fuel injection	Sequential fuel injection	Sequential fuel injection	Indirect electronic fuel injection	
SAE NET HORSEPOWER@RPM	200 @ 4400	220 @ 4600	255 @ 4600 <sup>1</sup> 245 @ 4600 <sup>2</sup>	290 @ 4000	195 @ 3400	
SAE NET TORQUE@RPM (lb-ft)	250 @ 2800	280 @ 2800	330 @ 2800 <sup>1</sup> 330 @ 2800 <sup>2</sup>	410 @ 3200	430 @ 1800	

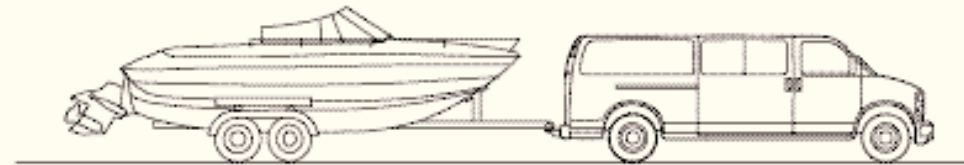
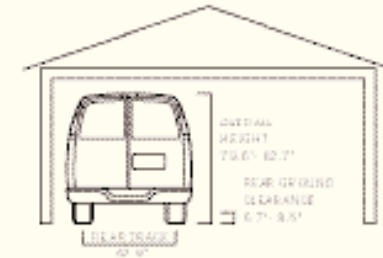
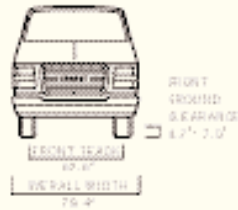
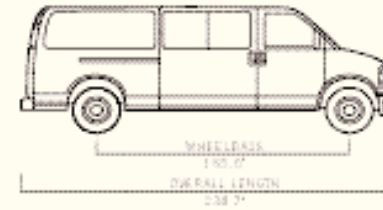
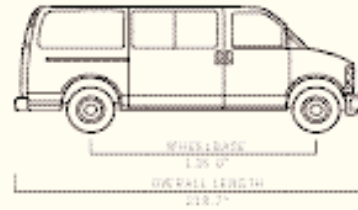
Engine/Model Availability	ENGINE S=Standard A=Available	Vortec 4300	Vortec 5000	Vortec 5700	6.5L V8 Vortec 7400	turbo diesel
1500	135" wheelbase	S	A	A		
2500	135" wheelbase	A	A	S		A
	155" wheelbase	A	A	S		
3500	135" wheelbase			S	A	A
	155" wheelbase			S	A	A

Standard Technical Data	SERIES	1500	2500	2500	3500	3500
WHEELBASE		135	135	155	135	155
GROSS VEHICLE WEIGHT RATING (lbs)		7100	8600	8600	9500	9500
FRONT SUSPENSION	Independent type with coil springs and shock absorbers specifically tuned to each vehicle's weight and usage via options ordered; includes stabilizer bar					
Axle capacity (lbs)		3600	4300	4300	4300	4300
Spring capacity (lbs)		3600	3800	4100	4300	4300
REAR SUSPENSION	Two-stage multileaf springs with shock absorbers					
Axle capacity (lbs)		4000	5400 (6084) <sup>3</sup>	5400	6084	6084
Spring capacity (lbs)		3968	5360	5360	6084	6084
TRANSMISSION	Electronic 4-speed automatic with overdrive					
BRAKES	Power-assisted front disc/rear drum four-wheel antilock brakes; include nonasbestos brake linings with front audible wear sensors					
STEERING	Power assist					
FUEL TANK CAPACITY		31 gallons	31 gallons	31 gallons	31 gallons	31 gallons
GENERATOR		100 amps	124 amps	124 amps	124 amps	124 amps

<sup>1</sup> Models up to 10,000 lbs GVWR. <sup>2</sup> Models over 10,000 lbs GVWR. <sup>3</sup> Diesel engine.



## Dimensions



MAXIMUM TOWING CAPACITY 10,000 lbs<sup>1</sup>

## Trailering Data & Rear Axle Ratios

ENGINE	Vortec 4300		Vortec 5000		Vortec 5700		Vortec 7400		6.5L V8 turbo diesel	
	Axle Ratio	Maximum Trailer Weight <sup>1</sup>	Axle Ratio	Maximum Trailer Weight <sup>1</sup>	Axle Ratio	Maximum Trailer Weight <sup>1</sup>	Axle Ratio	Maximum Trailer Weight <sup>1</sup>	Axle Ratio	Maximum Trailer Weight <sup>1</sup>
1500	3.42	4900 lbs	3.42	5800 lbs	3.42	6300 lbs	3.73	7300 lbs		
	3.73	5400 lbs			3.73	7300 lbs				
2500	3.42	4700 lbs	3.42	5600 lbs	3.42	6100 lbs	3.73	7100 lbs	3.73	8900 lbs
	4.10	5400 lbs			3.73	7100 lbs			4.10	8900 lbs
3500					3.73	6600 lbs	3.42	7900 lbs	3.73	8800 lbs
					4.10	8100 lbs				
							4.10	10,000 lbs		

<sup>1</sup> Maximum trailer weight ratings are based on regular wheelbase models and calculated assuming a standard equipped base vehicle plus driver. Trailer ratings for extended wheelbase models will be reduced. The weight of optional equipment, passengers, cargo and required trailering equipment also will reduce the maximum trailer weight your truck can tow. Trailer tongue weight should be 10 to 15% of total loaded trailer weight. See the *GMC Trailering Guide* for further details.



**A Note On Child Safety** Children generally are safer if they are secured in a rear seat using the appropriate child safety seats and restraints—which is why General Motors recommends that child safety seats be properly secured in a vehicle’s rear seat. Never place a rear-facing infant restraint in the front seat of any vehicle equipped with an active air bag. See your *Owner’s Manual* and child safety seat instructions for more safety information.

**Savana Has Many Standard Safety Features, Including:**

**Occupant Protection.** Lap/shoulder safety belt, rear outboard. Adjustable upper belt anchors, front outboard. Driver and front passenger air bags. Child comfort guides, rear outboard shoulder belts. Safety belt cinch capability for child seats. Child security door locks, rear doors and tether anchor. Side door beams.

**Crash Avoidance.** Four-wheel antilock brake system. Brake/transmission shift interlock. Daytime Running Lamps. Maintenance-free battery. Tires with built-in tread wear indicators. Audible brake lining wear indicators with front disc brakes. Side window defogger, front. Tinted glass windshield.

**Theft Deterrence.** Laser-etched VIN plate. Passlock theft deterrent system. Single two-sided key system. Remote hood release.

**Trailer With Your Savana** Savana is built strong and durable to handle the demands of towing. Certain equipment that prepares Savana for trailering is standard on every Savana: power steering, power brakes, a large fuel tank, a 100- or 124-amp alternator, a front stabilizer bar, an internal transmission oil cooler. For other available trailering-related equipment, talk to your dealer. You’ll need a hitch, of course, and a wide selection of hitch types is available, usually either from your dealer or as factory equipment. In addition, if you plan to tow frequently, you should equip your Savana with the available trailering package. This package includes a weight-distributing hitch platform and a heavy duty eight-wire electrical harness. Also required with this package are a hitch ball, mounting head, and equalizing and antisway assemblies; these are available through aftermarket sources. If you have any questions about trailering with a Savana, before you buy, feel free to ask your dealer for a copy of the *GMC Trailering Guide*. Be sure to read it and use it as a guide before you hitch a trailer to your Savana.

**About This Brochure** We have tried to make this brochure comprehensive and factual. We reserve the right, however, to make changes at any time and without notice, in prices, colors, materials, equipment, specifications, models and availability. Information may have been updated since the time of printing. Please check with your GMC dealer for complete details. GMC reserves the right to lengthen or shorten the model year for any reason, or to start and end model years at different times.

**Assembly** GMC models and their components are assembled or produced by different operating units of General Motors, its subsidiaries or suppliers to General Motors worldwide. We sometimes find it necessary to produce GMC models with different or differently sourced components than originally scheduled. Since some options may be unavailable when your vehicle is assembled, we suggest you verify that your vehicle includes the equipment you ordered or, if there are changes, that they are acceptable to you. GMC regularly sends its dealers useful GMC product service bulletins. To obtain these bulletins, ask your dealer or call 1-800-GMC-8782.

**Engines** GMC vehicles are equipped with engines produced by different operating units of General Motors, its subsidiaries or suppliers to General Motors worldwide.



**On The Web** See more of Savana on our website: [www.savana.gmc.com](http://www.savana.gmc.com)

- More photos and information
- Hot links to related subjects and features
- Spec out your own vehicle
- Convenient dealer locator
- Pricing guide

Or call 1-888-4A SAVANA (1-888-427-2826).



© 1999 GM Corp. All rights reserved. Buckle Up, America! Savana, GM, GMC, the GMC logo, Delco, Freedom, Solar-Ray, Passlock, Commitment Plus and Design and The GM Card are registered trademarks of General Motors Corporation. GMAC is a registered trademark of General Motors Acceptance Corporation. Dolby is a registered trademark of Dolby Licensing Corporation. Theftlock is a registered trademark of Delco Electronics Corporation.



GMC recognizes the importance of mobility to everyone’s life and therefore offers financial assistance to persons with disabilities through the General Motors Mobility Program. This program can provide up to \$1000 reimbursement toward the cost of aftermarket mobility adaptive equipment for drivers or passengers when installed or reinstalled on any eligible purchased or leased new GM vehicle. For details and free resource information, call 1-800-323-9935 (TTY users: 1-800-833-9935).



GMC is proud to be a partner in conservation with the Nature Conservancy, an organization dedicated to protecting the diversity of life on Earth. GMC contributes both money and trucks to support this worthwhile organization.



GMC backs your new vehicle with its no deductible Bumper to Bumper limited warranty. The entire vehicle is warranted for repairs, including parts and labor, to correct problems in materials or workmanship, for three years or 36,000 miles, whichever comes first (except normal maintenance). Diesel engines are covered up to five years or 100,000 miles, whichever comes first (a deductible applies after three years/36,000 miles). The warranty covers towing to the nearest GMC dealership, and there is no deductible for warranty repairs during the warranty period. The warranty transfers automatically with vehicle ownership during the warranty period. All body sheet-metal components are warranted against rust-through corrosion for six years or 100,000 miles, whichever comes first. GMCs are designed and built to resist corrosion. Application of additional rust-inhibiting materials is not required, and none is recommended. See your GMC dealer for terms and conditions of these limited warranties. *An important note about alterations and warranties:* Installations or alterations to the original equipment vehicle (or chassis) as distributed by General Motors are not covered by the General Motors New Vehicle Warranty. The special body company, assembler, equipment installer or upfitter is solely responsible for warranties on the body or equipment and any alterations (or any effects of the alterations) to any of the parts, components, systems or assemblies installed by GM. General Motors is not responsible for the safety or quality of design features, materials or workmanship of any alterations by such supplier.



GMC supports the National SAFE KIDS campaign,\* a grassroots program dedicated to promoting child passenger safety\*



Qualified approved customers can conveniently arrange GMAC® leasing and financing right at your GMC dealership. For more information, see your dealer or call 1-800-32-SMART.



The GM MasterCard gives you an important financial advantage. GM Card Earnings. GM Card Earnings can be used to purchase or lease a new GM car or truck (excludes Saturn, Saab, EVI). Card members receive 5% in earnings on any GM Card purchase — accumulating up to \$500 per account year. That’s over and above any other discount or incentive. Call 1-800-8GM-CARD.

# COMMITMENT PLUS

From the owner orientation—and full tank of gas—you receive when you take possession of your Savana to the 24-hour Roadside Assistance, Courtesy Transportation and Travel Benefits, Commitment Plus is a portfolio of owner privileges that lasts throughout your warranty. For expert product information, Roadside Assistance or other services, call 1-800-GMC-8782.



## GMC Orientation

- Thorough introduction to your Savana
- Complimentary full tank of fuel



## Courtesy Transportation<sup>1</sup>

- Free one-way shuttle (up to 10 miles away)
- Reimbursement for alternate transportation (for overnight service)



## PREMIUM Roadside Assistance

- Warranty towing, flat tire change, jumpstarts and more
- Available around the clock



## Travel Benefits

- Trip routing service
- Reimbursement for trip interruption (for warranty repairs)<sup>2</sup>



<sup>1</sup> Discuss the details with your dealer when making an appointment. <sup>2</sup> See your GMC dealer or call 1-800-GMC-8782 for complete details, including conditions and restrictions.