

CUSTOMIZE YOUR SONOMA

Being in the truck business for nearly a century gives us a few insights into what makes a great truck. We've got accessories that can make your Sonoma more useful or durable or just look great.



Sportside Bed¹ Tough and sporty is a seductive combination no true truck lover can resist. You get to keep all that cargo space you need but add a decidedly sporting look. Use the side step for convenient entry.



Bed Protector¹ Keeps the bed fresh even through the knocks of frequent cargo loads.

Sliding Rear Window¹ Gives you access to your gear when you need it and locks securely.



Fog Lamps¹ For enhanced visibility in tough driving conditions, available integral fog lamps are mounted low to help prevent light "bounce back" in fog, rain, dust or snow.

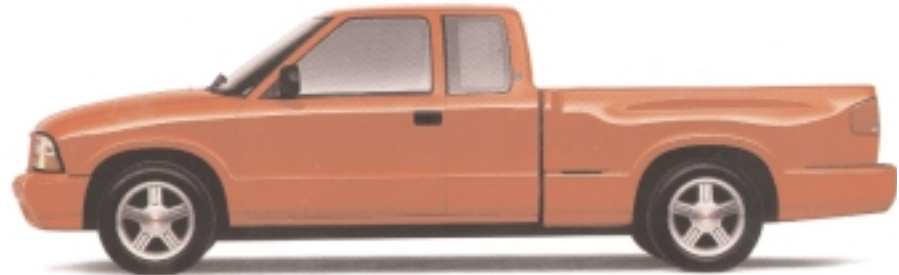


Recovery Hooks Mounted right to the frame for durability, the recovery hooks can pull or be pulled without damaging the front of the vehicle. Standard on 4WD.

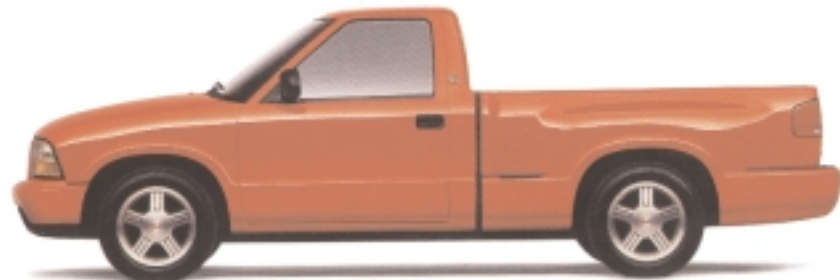
¹Optional feature, see GMC dealer for details. ²Shown with available Sportside bed and Z08 Sport suspension. ³Driver-side rear jump seat deleted with 3rd Door option. ⁴Interior width dimensions above wheel well; length dimensions at floor. Long wideside bed not available on 4WD.



Sonoma Extended Cab with 3rd Door 2WD²

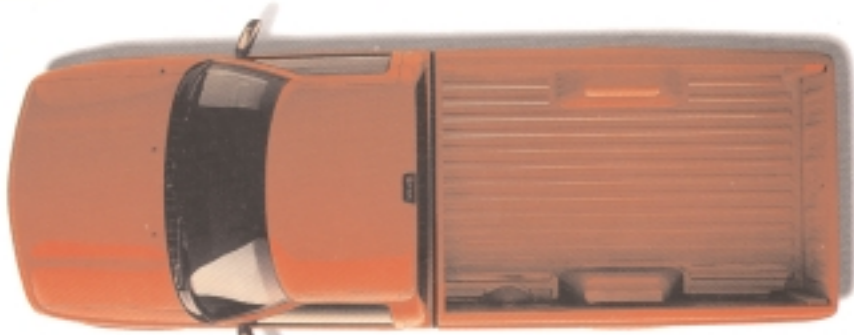


Sonoma Extended Cab 2WD²

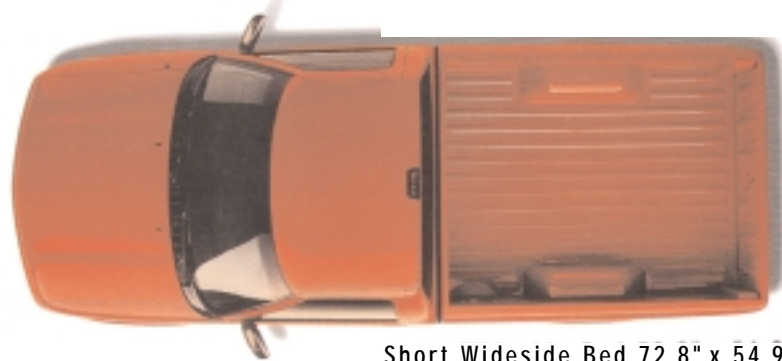


Sonoma Regular Cab 2WD²

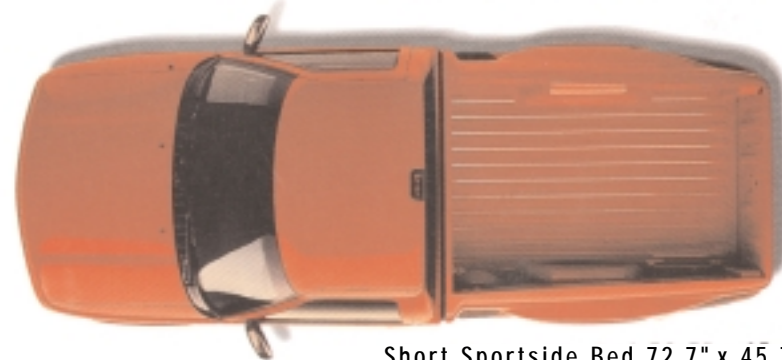
Cab Configurations Not everyone is configured the same way. Neither is Sonoma. You can choose Extended Cab with available 3rd door for increased interior carrying capacity,³ Extended Cab, or Regular Cab.



Long Wideside Bed 88.8" x 54.9"⁴



Short Wideside Bed 72.8" x 54.9"⁴



Short Sportside Bed 72.7" x 45.7"⁴

4WD Brushed Aluminum
With matching center cap,
standard on SLE models.



2WD Brushed Aluminum
With matching center cap,
standard on SLE models.



2WD 5-Spoke Cast Aluminum
Standard on ZQ8 Sport
suspension only.



2WD Brushed Aluminum
With gray center cap,
optional on SL and SLS models.



2WD and 4WD Steel
With gray center cap,
standard on SL and SLS models.



Bed Styles Bed sizes and configurations are up to you. They all feature double wall construction to reduce dings and dents, and galvanized steel for corrosion resistance and durability. The beds also have tie-downs for securing cargo and no exposed bolts. For convenience, there's a cutout step on the bumper of wideside beds.

Wheel Styles With five to choose from, you can find the one that perfectly matches your combination of color, cab configuration, bed style, engine and interior.

Sonoma: Packages

To help simplify ordering, Sonoma has combined popular options into several packages. **All come equipped with air conditioning, CD player, tilt steering wheel and cruise control.**



1SE (2WD Regular cab, 4 cyl) Sonoma is the compact pickup that combines the big-job strength and versatility of a full-size truck with a level of agility and efficiency all its own. It features ample shoulder room, 4-wheel ABS and one of the biggest standard fuel tanks in its class.¹



1SF (2WD Extended cab, 4 cyl) In addition to the benefits of the 1SE, the 1SF features a longer wheelbase. The extended cab offers an available handy third door that provides quick, convenient access to extra, behind-the-seat storage.



1SG (2WD Extended cab, 6 cyl) In addition to the features found in the 1SF, this model has an available 4300 Vortec V6 engine that produces 180 hp. With this level of power, Sonoma can take on big jobs with ease. A Sportside bed is also available. Shown with available ZQ8 Sport suspension.



1SH (4WD Extended cab, 6 cyl) This model adds the functionality of 4WD to take you anywhere and get the difficult jobs done. With a push of a button, the available Insta-Trac shift-on-the-fly system lets you choose from 2WD HI, 4WD HI or 4WD LO.



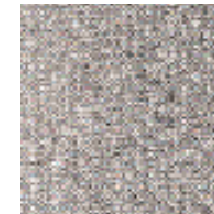
1SJ (4WD Highrider, Extended cab, 6 cyl) In addition to 4WD, this model features the Highrider suspension package. This includes the Insta-Trac shift-on-the-fly system, 46 mm Bilstein gas shocks, automatic locking differential, wide track and tall ride height, alloy wheels and on/off road tires, a 28 mm front stabilizer bar and beefed-up front and rear axles.

Color and Trim: Interior & Exterior

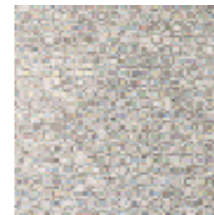
Interior Trim Sonoma's wide range of interior colors makes it easy to turn Sonoma into one that's right for you.



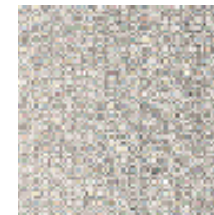
Graphite
Custom Cloth



Graphite
Deluxe Cloth



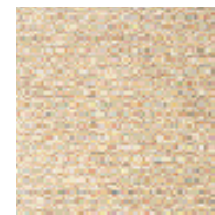
Pewter
Custom Cloth



Pewter
Deluxe Cloth



Pewter
Custom Vinyl



Beige
Custom Cloth



Beige
Deluxe Cloth

Exterior Trim Available in all exterior colors.

¹Excludes other GM products.



Summit White¹



Onyx Black



Smoky Caramel Metallic¹



Topaz Gold Metallic¹



Pewter Metallic



Fire Red



Cherry Red Metallic¹



Meadow Green Metallic



Space Blue



Indigo Blue Metallic¹

¹ Not available on Highrider. All colors are basecoat-clearcoat for high gloss and durable finish.

Equipment: Interior

Interior							
S = Standard A = Available	SL	SLS	SLE		SL	SLS	SLE
AIR BAGS Driver and front passenger ¹ ; includes passenger-side cut-off switch ²	S	S	S	FLOOR MATS Color-keyed vinyl		S	S
AIR CONDITIONING Non-CFC refrigerant	A	A	A	GAUGES Speedometer, odometer, trip odometer, fuel level, voltmeter, engine temperature and oil pressure	S	S	S
ASSIST HANDLES Passenger-side	S	S	S	HEADLAMP WARNING Lights-on warning tone	S	S	S
AUDIO SYSTEMS: AM/FM stereo, seek and scan, digital clock and premium 4-speaker system (UM7)	S	S	S	HEADLINER Interior-colored cloth	S	S	S
AM/FM stereo with cassette, seek and scan, digital clock and premium 4-speaker system (UM6)	A	A	A	HEATER/DEFOGGER With side-window defoggers	S	S	S
AM/FM stereo with CD player, random select automatic tone control, Theftlock security device, seek and scan, digital clock and premium 4-speaker system (UNO)		A	A	LIGHTING Dome lamp with door-activated switches, illuminated exit feature, glove box lamp and ashtray lamp; includes battery run-down protection	S		
AM/FM stereo with cassette and CD player, auto reverse and music search, random select, speed sensitive volume, automatic tone control, Theftlock security device, seek and scan, digital clock and premium 4-speaker system (UP0) ³		A	A	Dome lamp with door-activated switches, illuminated entry and exit feature, dual reading lamps, glove box lamp, ashtray lamp; includes battery run-down protection		S	S
Radio delete (UL5)	A			MIRROR Rearview	S		
BACK OF CAB COVERING Interior-colored carpet	S	S	S	Rearview with dual reading lamps and illuminated entry and exit feature		S	S
CIGARETTE LIGHTER Located in ashtray	S	S	S	PASSLOCK THEFT DETERRENT SYSTEM	S	S	S
CONSOLE, FULL-LENGTH FLOOR Located between bucket seats with flip-up armrest storage and two cupholders; includes coin holder, cassette and CD storage; requires bucket seats		A	A	POWER OUTLETS, DUAL Located at bottom of dash		S	S
CONSOLE, MINI FLOOR Includes one cupholder; not available with bucket seats or automatic transmission	S	S	S	POWER PACKAGE Power windows, door locks, dual electric-control heated outside mirrors, and remote keyless entry		A	A
CRUISE CONTROL/TILT STEERING WHEEL	A	A	A	RETAINED ACCESSORY POWER Allows operation of power windows, radio and other power features up to 20 minutes after the ignition has been turned off	S	S	S
CUPHOLDERS (bench & 60/40 seat) One in each front door panel	S	S	S	SAFETY BELTS Front lap and shoulder belts with traveling inboard belt buckle and center lap belt	S	S	S
Manual transmission: one in mini console	S	S	S	Rear jump seat lap belts (on Extended Cab models only) ⁴	S	S	S
Automatic transmission: two at center seat position	S	S	S	SEATS, FRONT Bench in Custom Vinyl (Regular Cab)	S		
CUPHOLDERS (bucket seat) One in each front door panel	S	S	S	60/40 bench in Custom Vinyl or Custom Cloth (Extended Cab)	S		
Two in full-length floor console		A	A	Bench in Custom Cloth	A		
DOOR PANELS Interior-colored soft plastic with map pockets and cupholders	S			60/40 reclining split bench seat in Deluxe Cloth, with driver-side manual lumbar adjuster, folding seatback, folding center armrest with storage and two cupholders		S	S
Interior-colored upper cloth insert, soft plastic lower with map pockets, cupholders and driver-side coin holder		S	S	High-back reclining bucket seats in Deluxe Cloth with manual lumbar support adjuster and center console		A	A
FLASH-TO-PASS Incorporated into steering column; driver-activated momentary high-beam signalling device	S	S	S	SEATS, REAR JUMP Extended Cab models only ⁴	S	S	S
FLOOR COVERING Full-floor, dark gray vinyl	S			STEERING WHEEL Deluxe 4-spoke steering wheel in black	S	S	S
Full-floor, interior-colored carpet	A	S	S	Leather-wrapped deluxe 4-spoke steering wheel in black		A	A
				Tilt capability and cruise control	A	A	A
				SUN VISORS Interior-colored cloth	S	S	
				Interior-colored cloth with driver- and passenger-side illuminated visor mirrors and extenders			S
				VEHICLE CONTENT THEFT ALARM (requires Power Package)		A	A

Equipment: Exterior.Mechanical

Exterior				SL	SLS	SLE
S = Standard A = Available				SL	SLS	SLE
BED Two-tier loading capability	S	S	S			
Wideside	S	S	S			
Sportside (not available with Highrider suspension package)		A				
BUMPERS Front and rear step, body-colored	S	S				
Front and rear step, Steel Gray Metallic with bright inserts			S			
CENTER HIGH-MOUNTED STOP LAMP						
Additional brake light	S	S	S			
DAYTIME RUNNING LIGHTS	S	S	S			
FOG LAMPS Integrated within the headlamp cluster (not available on Highrider)		A	A			
GRILLE ACCENTS						
Gray	S					
Body color		S				
Steel Gray Metallic with bright trim ring			S			
HEADLAMPS Composite halogen headlamps with Automatic Headlamp Control; turns on headlamps and taillamps when sunlight diminishes	S	S	S			
MIRRORS Dual adjustable with pivoting arms, black	S	S	S			
Dual electric control, heated, black (requires Power Package)		A	A			
MOLDING Steel Gray Metallic body-side with bright insert			S			
RECOVERY HOOKS Front frame-mounted (4WD models only)	S	S	S			

Mechanical				SL	SLS	SLE
S = Standard A = Available				SL	SLS	SLE
BATTERY, HEAVY DUTY Delco® Freedom® 525 CCA	S	S	S			
Delco Freedom 690 CCA (available only in Cold Climate package)	A	A	A			
BATTERY RUNDOWN PROTECTION Turns off any light left on after 20 minutes	S	S	S			
BRAKE/TRANSMISSION SHIFT INTERLOCK Safety feature with automatic transmission	S	S	S			
BRAKES Front disc, rear drum (four-wheel disc on 4WD models) with four-wheel antilock braking system	S	S	S			
COLD CLIMATE PACKAGE Heavy duty battery and engine block heater	A	A	A			

SL	SLS	SLE
	A	A
S	S	S
	A	A
S	S	S
A	A	A
	A	
S	S	
A	A	S
	A	
S	S	
A	A	S
A	A	A
S	S	S
A	A	A
S	S	S

¹Always use safety belts and proper child restraints, even with Next Generation air bags. Please refer to "A Note on Child Safety" on page 24.

²For use when carrying children.
³Requires bucket seats.

⁴Driver-side rear jump seat deleted with 3rd Door option.
⁵Maintenance needs vary with different uses and driving conditions. See the *Owner's Manual* for more information.

⁶Limited to certain models. See your dealer.

Specifications: Engine . Transmission . Suspension . Trailering . Standard Data . Dimensions .

Engine Specifications	ENGINE	Vortec 2200 (LN2)			Vortec 4300 (L35)		
	CAPACITY/CONFIGURATION/CYLINDERS	2.2L L4			4.3L V6		
	ORDERING CODE	LN2			L35		
	CUBIC-INCH DISPLACEMENT	134			262		
	BORE AND STROKE (mm)	89.00 x 88.00			101.60 x 88.39		
	COMPRESSION RATIO	9.0:1			9.2:1		
	FUEL DELIVERY	Sequential fuel injection			Sequential fuel injection		
	SAE NET HORSEPOWER @ RPM	120 @ 5000 (2WD)			180 @ 4400 (2WD)		
					190 @ 4400 (4WD)		
	SAE NET TORQUE @ RPM (lb-ft)	140 @ 3600 (2WD)			245 @ 2800 (2WD)		
					250 @ 2800 (4WD)		
	FUEL CONSUMPTION ¹						
	4-speed automatic (EPA estimated mpg city/highway)			17/22 (2WD) 16/21 (4WD)			
	5-speed manual (EPA estimated mpg city/highway)			17/23 (2WD) 17/22 (4WD)			
Engine/Model Availability	ENGINE S = Standard A = Available	Vortec 2200 (LN2)			Vortec 4300 (L35)		
	REGULAR CAB Short bed 2WD	S			A		
		4WD			S		
	REGULAR CAB Long bed 2WD	S			A		
	EXTENDED CAB Short bed 2WD	S			A		
	4WD			S			
Transmission Availability	ENGINE S = Standard A = Available	Vortec 2200 (LN2)			Vortec 4300 (L35)		
	ALL 2WD MODELS: 5-speed manual with overdrive	S			S		
	4-speed electronic automatic with overdrive	A			A		
	ALL 4WD MODELS: 5-speed manual with overdrive				S		
	4-speed electronic automatic with overdrive			A			
Suspension Packages	SUSPENSION PACKAGES	Smooth Ride	Sport	Heavy Duty	Heavy Duty	Highrider	
	DRIVE TYPE	2WD	2WD	2WD	4WD	4WD	
	ORDERING CODE	Z83	Z08	Z85	Z85	ZR2	
	USAGE	Ride	Handling	Multi-use	Multi-use	Recreation	
	PRIMARY ROAD USE	Paved	Paved	Paved/unimproved	Paved/unimproved	Off-road	
	CARGO CAPACITY	Good	Good	Maximum	Maximum	Good	
	TRAILERING	Light duty	Heavy duty	Heavy duty	Heavy duty	Heavy duty	
	RIDE	Smooth	Firm	Very firm	Very firm	Ride control	
	SHOCKS	32 mm	46 mm DeCarbon	32 mm	32 mm	46 mm Bilstein	
	TIRE SIZE	P205/75R15	P235/55R16 ²	P205/75R15	P235/70R15 ²	31x10.5R15 ²	
	WHEEL SIZE (in.)	15 x 7.0	16 x 8.0	15 x 7.0	15 x 7.0	15 x 7.0	
	¹ Preliminary numbers. ² Tire chains should not be used with P235/55R16, P235/70R15, P235/75R15 or 31x10.5R15 tires because they could damage your Sonoma.						

Trailering Data & Rear Axle Ratios	MAXIMUM TRAILER WEIGHT (lbs)	2000	2300	3200	3900	4200	4400	4900	5400	5900	6400	
	2WD VORTEC 2200 (LN2) automatic transmission			4.10								
	2WD VORTEC 2200 (LN2) manual transmission	3.73	4.10									
	VORTEC 4300 (L35) automatic transmission								3.08		3.42	
	VORTEC 4300 (L35) manual transmission					3.08						
	4WD VORTEC 4300 (L35) automatic transmission								3.08		3.42/3.73	
	VORTEC 4300 (L35) manual transmission				3.08		3.42	3.73				

Maximum trailer rate ratings are based on regular cab models and calculated assuming a standard equipped base vehicle plus driver. Trailer ratings for Extended cab models will be reduced. The weight of optional equipment, passengers, cargo and required trailering equipment will reduce the maximum trailer weight your truck can tow. Trailer tongue weight should be 10 to 15% of total loaded trailer weight. See the *GMC Trailering Guide* for further details.

Standard Technical Data	MODEL TYPE	Regular Cab Short bed	Regular Cab Long bed	Extended Cab Short bed	Regular Cab Short bed	Extended Cab Short bed
	DRIVE TYPE	2WD	2WD	2WD	4WD	4WD
	GROSS VEHICLE WEIGHT RATING (lbs)	4200	4600	4600	5150	5150
	CURB WEIGHT (lbs)	3040	3112	3247	3610	3765
	FRONT SUSPENSION	Independent coil springs (2WD)			Independent torsion bars (4WD)	
	AXLE CAPACITY (total lbs)	2500	2500	2500	2700	2800
	SPRING CAPACITY (total lbs)	2500	2500	2500		
	TORSION-BAR CAPACITY (total lbs)				2700	2800
	REAR SUSPENSION	Semi-elliptic two-stage multileaf springs				
	AXLE CAPACITY (total lbs)	2900	2900	2900	2900	2900
	SPRING CAPACITY (total lbs)	2300	2700	2700	2700	2700
	BRAKES	Four-wheel disc antilock braking system (rear drums on 2WD models)				
	STEERING	Variable ratio with integral power				
	FUEL TANK CAPACITY	19 gallons				
	DELCO FREEDOM BATTERY	12-volt, maintenance-free, 525 cold cranking amps (690 available)				
ALTERNATOR	100 amps					

Dimensions	2 Wheel Drive		OVERALL HEIGHT		Regular Cab		
		Regular Cab, Short Bed	63.2"				
		Extended Cab	63.3"				
		GROUND CLEARANCE	Front	Rear			
		Short Bed	9.1"	7.2"			
		Long Bed	8.7"	6.7"			
		4 Wheel Drive	OVERALL HEIGHT		Extended Cab		
		Extended Cab	63.9"				
		Short Bed	63.9"				
	GROUND CLEARANCE	Front	Rear				
	Extended Cab	7.5"	7.5"				
	Short Bed	8.6"	7.5"				

A Note On Child Safety Children generally are safer if they are secured in a rear seat using the appropriate child safety seats and restraints, which is why General Motors recommends that child safety seats be properly secured in a vehicle's rear seat. Never place a rear-facing infant restraint in the front seat of any vehicle equipped with an active air bag. See the Owner's Manual and child safety seat instructions for more information.

Sonoma Has Many Standard Safety Features, Including:

Occupant Protection. Driver and front passenger air bags. Front passenger-side air bag deactivation switch (for use with rear-facing infant restraints). Driver and front passenger lap/shoulder belts. Center lap belt. Safety belt cinch capability for child safety seats. Side door beams.

Crash Avoidance. Four-wheel antilock brake system. Brake/transmission shift interlock. Driver-activated momentary high-beam signaling device. Composite halogen headlamps. Maintenance-free battery. Tires with built-in tread wear indicators. Audible brake lining wear indicators with front disc brakes. Side window defogger. Tinted glass windshield. Recovery hooks standard on 4WD.

Theft Deterrence. Laser-etched VIN plate. Marked body parts. Passlock theft deterrent system. Single two-sided key system. Remote hood release. Vehicle content theft alarm.

Tire Chains If your vehicle has P235/55R16, P235/75R15, P235/70R15 or 31x10.5R15 size tires, tire chains should not be used because they could damage your truck.

Off-Roading When you go off-road, you should ensure your driving is appropriate to the vehicle and environment. Avoid sharp turns and abrupt maneuvers. Failure to operate vehicle correctly off-road could result in loss of vehicle control or vehicle rollover. When you are off-road, make sure that all cargo is properly loaded and secured. Whenever possible, use established trails, roads and other areas that have been set aside for public off-road recreational driving. And obey posted regulations. Don't drive on private property without the permission of the owner; in some states, you must have it in writing. Avoid any driving practice that could harm the environment or hurt wildlife, such as wheel-spinning, breaking down trees, driving through streams or over soft ground. (And never park your vehicle over dry grass or other materials that could catch fire from the heat of the vehicle's exhaust system.)

Trailer With Your Sonoma Sonoma is built strong and durable to handle the demands of towing. Certain equipment that prepares Sonoma for trailering is standard: power steering and brakes, a large fuel tank, a 100-amp alternator and front stabilizer bar. A wide selection of trailering equipment such as hitch platforms, electrical harnesses and anti-sway assemblies is available from a variety of reliable aftermarket sources. If you have any questions about trailering with a Sonoma, feel free to ask your dealer for a copy of the GMC Trailering Guide before you buy.

About This Brochure We have tried to make this brochure comprehensive and factual. We reserve the right, however, to make changes at any time and without notice, in prices, colors, materials, equipment, specifications, models and availability. Since information may have been updated from the time of printing, please check with your GMC dealer for complete details. GMC reserves the right to lengthen or shorten the model year for any product for any reason, or to start and end model years at different times.

Assembly GMC models and their components are assembled or produced by different operating units of General Motors, its subsidiaries or suppliers to General Motors worldwide. We sometimes find it necessary to produce models with different or differently sourced components than originally scheduled. Since some options may be unavailable when your vehicle is assembled, we suggest you verify that your vehicle includes the equipment you ordered, or, if there are changes, that they are acceptable to you. GMC regularly sends its dealers useful GMC product service bulletins. To obtain these bulletins, ask your dealer or call 1-800-GMC-8782.

Engines GMC vehicles are equipped with engines produced by different operating units of General Motors, its subsidiaries or suppliers to General Motors worldwide.



On The Web See more of Sonoma on our website: www.sonoma.gmc.com

- More photos and information
- Hot links to related subjects and features
- Spec out your own vehicle
- Convenient dealer locator
- Pricing guide

Or call 1-800-GMC-8782 (1-800-462-8782).



GMC recognizes the importance of mobility to everyone's life and therefore offers financial assistance to persons with disabilities through the General Motors Mobility Program. This program can provide up to \$1000 reimbursement toward the cost of aftermarket mobility adaptive equipment for drivers or passengers when installed or reinstalled on any eligible purchased or leased new GM vehicle. For details and free resource information, call 1-800-323-9935 (TTY users: 1-800-833-9935).



GMC is proud to be a partner in conservation with The Nature Conservancy, an organization dedicated to protecting the diversity of life on Earth. GMC contributes both money and trucks to support this worthwhile organization.



GMC backs your new vehicle with its no deductible Bumper to Bumper limited warranty. The entire vehicle is warranted for repairs, including parts and labor, to correct problems in materials or workmanship, for three years or 36,000 miles, whichever comes first (except normal maintenance). The warranty covers towing to the nearest GMC dealership, and there is no deductible for warranty repairs during the warranty period. The warranty transfers automatically with vehicle ownership during the warranty period. GMCs are designed and built to resist corrosion. All body sheet-metal components are warranted against rust-through corrosion for six years or 100,000 miles, whichever comes first. Application of additional rust-inhibiting materials is not required, and none is recommended. See your GMC dealer for terms and conditions of these limited warranties.



GMC supports the National Safe Kids Campaign,* a grassroots program dedicated to promoting child passenger safety.



Qualified approved customers can conveniently arrange GMAC® leasing and financing right at your GMC dealership. For more information, see your dealer or call 1-800-32-SMART.



The GM MasterCard gives you an important financial advantage, GM Card Earnings. GM Card Earnings can be used to purchase or lease a new GM car or truck (excludes Saturn, Saab, EVI). Card members receive 5% in earnings on any GM Card purchase — accumulating up to \$500 per account year. That's over and above any other discount or incentive. Call 1-800-8GM-CARD.



©1999 GM Corp. All rights reserved. Buckle Up. America! GM, GMC, the GMC logo, Sonoma, Delco, Freedom, Insta-Trac, Solar-Ray, Passlock, Autotrac, The GM Card and Commitment Plus and Design are registered trademarks of General Motors Corporation. Do one thing. Do it well. and Vortec are trademarks of General Motors Corporation. GMAC is a registered trademark of General Motors Acceptance Corporation. Theftlock is a registered trademark of Delco Electronics Corporation. Bilstein is a registered trademark of Bilstein Corporation.

COMMITMENT PLUS

From the owner orientation—**and full tank of gas**—you receive when you take possession of your Sonoma to the **24-hour Roadside Assistance**, **Courtesy Transportation** and **Travel Benefits**, **Commitment Plus** is a portfolio of owner privileges that lasts throughout your warranty. For expert product information, Roadside Assistance or other services, call **1-800-GMC-8782**.

**COMMITMENT
PLUS**

GMC Orientation

- Thorough introduction to your Sonoma
- Complimentary full tank of fuel



Courtesy Transportation¹

- Free one-way shuttle (up to 10 miles away)
- Reimbursement for alternate transportation (for overnight service)

PREMIUM Roadside Assistance

- Warranty towing, flat tire change, jumpstarts and more
- Available around the clock



Travel Benefits

- Trip routing service
- Reimbursement for trip interruption (for warranty repairs)²

¹ Discuss the details with your dealer when making an appointment. ² See your GMC dealer or call 1-800-GMC-8782 for complete details, including conditions and restrictions.