

THE INTELLIGENT ALTERNATIVE TO EVERYTHING ELSE.

Mercury Mariner is a uniquely fresh take on compact SUV design. It doesn't merely follow the path suggested by what has come before. Instead, it takes off in a different direction, setting new standards for utility, style and driving ease.



MERCURY | NEW DOORS OPENED

mercuryvehicles.com



THE 2006 MERCURY MARINER.

Mercury Mariner is compact enough for a garage, yet roomy and comfortable. Its look is fresh and intriguing, combining Mercury design cues with chiseled, contemporary lines. Yet Mariner is a practical choice that combines everyday utility with a car-like ride. It's the next step, and it's available now.

THE EYE AND THE INTELLECT.

From a delightful combination of chrome, satin-aluminum and wood-grain accents to available black leather-trimmed seats with light parchment Preferred Suede,[®] Mariner's passenger cabin is strikingly stylish. It is also most useful. With the 60/40 rear seat folded, Mariner provides a roomy 62.8 cu. ft. of cargo space. That's a lot to like.



FOR ALL THAT YOU HAVE GOING.

Mariner may well be the world's best way to move you, your friends and your stuff from here to there. With four-wheel independent suspension and power rack-and-pinion steering, it's similar in design to some of the world's best sport sedans. With the available 200-horsepower Duratec V-6, it responds with enthusiasm. With available Intelligent 4WD, it communicates confidence. Yet Mariner is stingy at the pump, squeezing up to 26 highway miles out of a gallon of gas.*



*EPA-estimated mpg 22 city/26 hwy, Mariner Convenience FWD.



BIG STUFF GOES HERE.

Fold Mariner's 60/40 split rear bench seat and take on a load. You'll have 62.8 cu. ft. to play with.



SMALL STUFF GOES THERE.

Stash small treasures in the handy front-door and rear-cargo-area pockets.



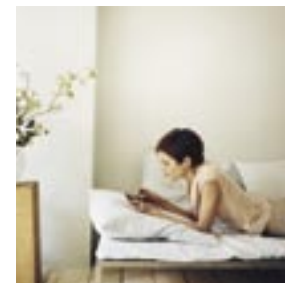
HIGH-PERFORMANCE PERFORMANCES.

The available Audiophile® Sound System with six-disc in-dash CD changer pours beautiful music through six speakers and an eight-inch subwoofer.



FINGERTIP FUNCTIONS.

You can regulate the speed control via buttons mounted within easy reach on the leather-wrapped steering wheel.



TEST DRIVE THE 2006 MERCURY MARINER.

Visit [Shopping Tools](http://mercuryvehicles.com/ShoppingTools) at mercuryvehicles.com to locate your nearest Dealer and schedule a test drive. Or, if you prefer, you can call 888-566-8888.



MERCURY | NEW DOORS OPENED

mercuryvehicles.com