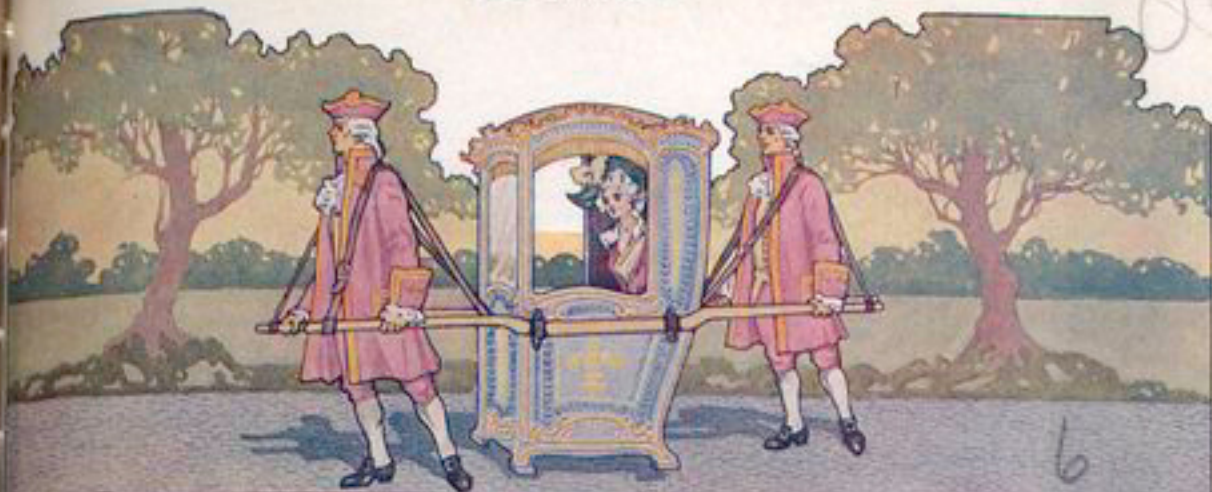


819251

1909



*“Maxwell”*

*1909*





NEWCASTLE PLANT

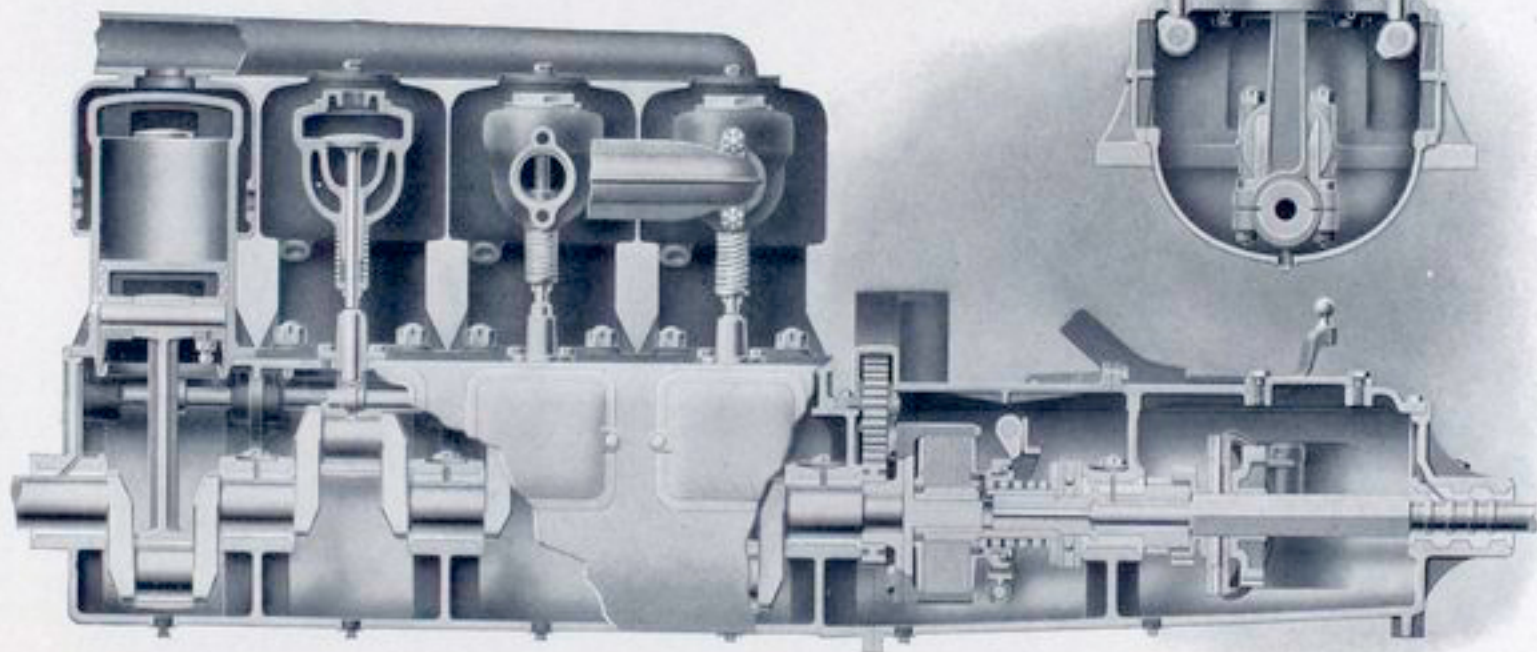


TARRYTOWN PLANT



PAWTUCKET-ATHERTON PLANT

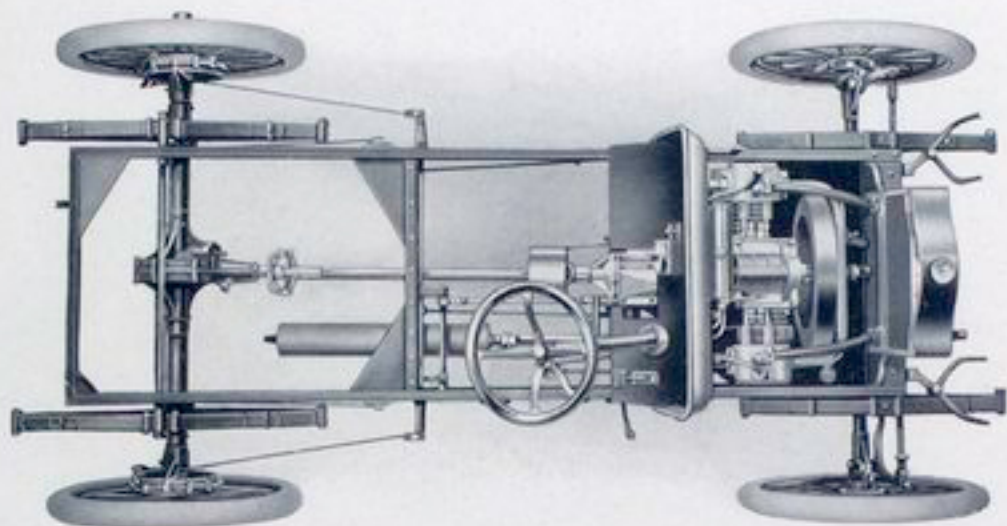
Motor of the Model D A, four-cylinder, 30 horsepower touring car, showing unit construction of engine and transmission. A feature is the unique method of lubricating the pistons, which is accomplished by a grooved brass ring at the lower end of the cylinders, fed from a separate oil lead, the overflow running into the crank case to augment splash lubrication. Cylinders are cast separate, permitting the use of five main bearings, four of which are shown.



"Maxwell"

# Maxwell

PERFECTLY SIMPLE—SIMPLY PERFECT

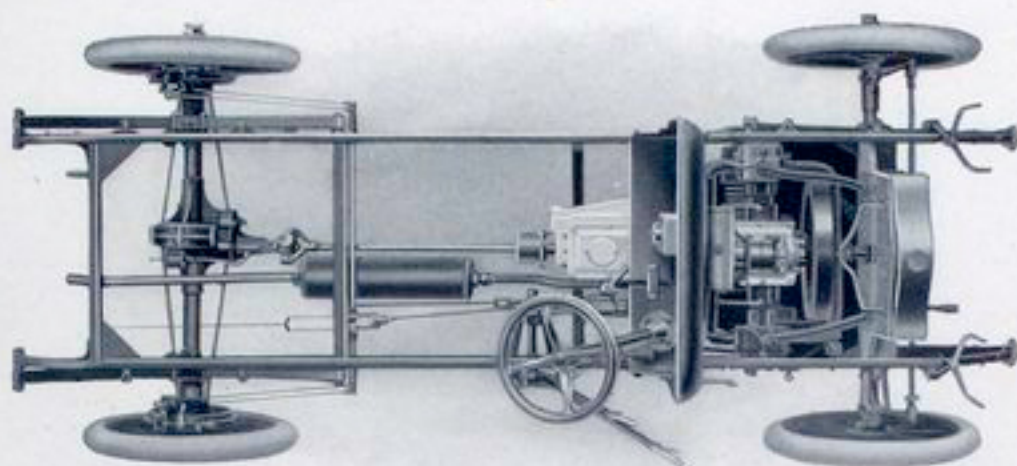


## Specifications for Model L D

- Motor** . . . . . Two-cylinder, double-opposed,  $4\frac{1}{2}$  inch bore, 4 inch stroke, giving 14 horsepower at normal speed. Range of motor, 150 to 1,500 revolutions. Valves mechanically operated and interchangeable. Valve cams and camshaft contained in separate frame, which can be removed without change of timing. Motor thoroughly protected by a sheet metal pan.
- Carbureter** . . . . . Our standard design; float-feed type
- Ignition** . . . . . Double, Magneto and Battery with non-vibrating coil.
- Oiling** . . . . . Compression oiler, located on dash, automatically oils motor and clutch.
- Cooling** . . . . . Honeycomb cooler, natural circulation, no pump.
- Transmission** . . . . . Planetary type, two speeds forward, one reverse, direct on high. Transmission enclosed and runs in oil, obviating the difficulties encountered in the usual type of planetary gear, in which the oil is thrown out by centrifugal force. Dust and dirt proof. Slow-speed and reverse bands quickly adjusted by set screws extending through side of case.
- Drive** . . . . . Bevel gear, with two universal joints, insuring perfect flexibility.
- Frame** . . . . . Pressed steel.
- Wheels** . . . . . 30 inches, wood, artillery pattern.
- Tires** . . . . . 30 x 3 inches, standard clincher type.
- Wheelbase** . . . . . 84 inches; tread, 56 inches.
- Springs** . . . . . Full elliptic.
- Brakes** . . . . . Double-acting on rear hubs.
- Body** . . . . . Metal, with stamped molding; runabout type, full or divided seat; upholstered in high-grade leather and hair.
- Tank Capacity** . . . . . Gasoline, 10 gallons; water,  $2\frac{1}{2}$  gallons; oil, 2 quarts.
- Weight** . . . . . About 1,150 pounds.
- Equipment** . . . . . Top (no storm front), two oil side lights, one tail lamp, two gas lamps and generator, one horn with flexible tube, set of tools, tire repair kit.
- Color** . . . . . MAXWELL Green or Speedster Red.
- Price** . . . . . \$825, f. o. b. factory where manufactured.
- Option** . . . . . Special body with single rumble seat, without top. Top extra. Storm front extra.

# Maxwell

PERFECTLY SIMPLE—SIMPLY PERFECT



## Specifications for Model H D

- Motor** . . . . Two-cylinder, double-opposed, 5 x 5 inches, giving 20 horsepower actual at normal speed. Range of motor, from 150 to 1,500 revolutions. Valves mechanically operated and interchangeable. Valve cams and camshaft contained in separate frame; can be removed without change of timing. Motor thoroughly protected by a sheet metal pan.
- Carbureter** . . . . Our standard design; float-feed type.
- Ignition** . . . . Double, Magneto and Battery with non-vibrating coil.
- Oiling** . . . . Compression oiler, located on front of dash under hood; automatically oils motor and clutch; three sight feeds in view of operator.
- Cooling** . . . . Honeycomb cooler, natural circulation—no pump.
- Transmission** . . . . Sliding-gear type, three speeds forward, one reverse; direct drive on high.
- Clutch** . . . . All metal, multiple-disc.
- Drive** . . . . Bevel gear, with two universal joints, insuring perfect flexibility.
- Frame** . . . . Pressed steel.
- Wheels** . . . . 30 inches, wood, artillery pattern.
- Tires** . . . . 30 x 3 1/2 inches, standard clincher type.
- Wheelbase** . . . . 96 inches; tread, 56 inches.
- Springs** . . . . Semi-elliptic.
- Brakes** . . . . Two sets, double-acting, operating on hub drums, internal expanding and external contracting.
- Body** . . . . Metal, with stamped molding; seats five; large side doors opening out; upholstered in high-grade leather and hair.
- Tank Capacity** . . . . Gasoline, 14 gallons; water, 3 gallons; oil, 2 quarts.
- Weight** . . . . About 1,700 pounds.
- Equipment** . . . . Top (no storm front), two brass gas-lamps and generator, two brass oil side lamps, one oil tail lamp, one horn with flexible tube, foot rest, coat rail, full set of tools, tire repair kit.
- Color** . . . . MAXWELL Green. No options.
- Price** . . . . \$1,450 f. o. b. factory where manufactured, fully equipped as above.  
\$1,250 without magneto, top, and gas lamp equipment.

*Maxwell*

PERFECTLY SIMPLE—SIMPLY PERFECT

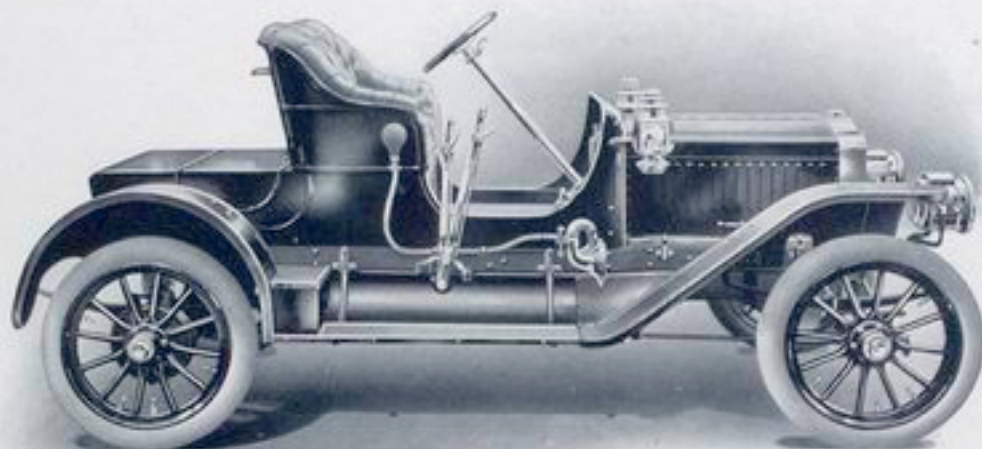


## Model Dr.

This car is the same in construction as our Model HD. It has been built especially for physicians and contractors desiring a more powerful car than our runabouts, and one having plenty of carrying capacity in the rear. Equipped with a three-speed sliding-gear transmission, it is well adapted for hilly countries and sandy roads.

# Maxwell

PERFECTLY SIMPLE—SIMPLY PERFECT



## Specifications for Model K A

- Motor** . . . Four vertical individual cylinders,  $4\frac{1}{4} \times 4\frac{1}{4}$ , giving 30 horsepower actual at normal speed. Inlet and exhaust valves mechanically operated and interchangeable; located on opposite sides. Motor thoroughly protected by sheet metal pan.
- Carbureter** . . . Our standard design; float-feed type.
- Ignition** . . . Double, Magneto and Battery with non-vibrating coil.
- Oiling** . . . Positive shaft-driven oiler, located on dash; automatically oils motor and clutch; sight feeds in view of operator.
- Cooling** . . . Honeycomb cooler, natural circulation—no pump.
- Transmission** . . . Sliding-gear type, three speeds forward, one reverse, direct on high.
- Clutch** . . . All metal, multiple disc.
- Drive** . . . Bevel gear, with two universal joints.
- Frame** . . . Pressed steel.
- Wheels** . . . 32 inches, wood, artillery pattern.
- Tires** . . . 32 x 4 inches, standard clincher type.
- Wheelbase** . . . 104 inches; tread 56 inches.
- Springs** . . . Semi-elliptic.
- Brakes** . . . Two sets, double-acting on rear drums, viz: One set internal expanding, one set external contracting.
- Body** . . . Metal, with stamped molding. Double folding rearseat. Options: Single rumble or double surrey rearseat; upholstered in high-grade leather and hair.
- Tank Capacity** . . . Gasoline, 14 gallons; water, 5 gallons; oil, 2 quarts.
- Weight** . . . About, 1,800 pounds.
- Equipment** . . . Two brass oil side lights, two gas lamps and generator, one oil tail light, one horn with flexible tube, coat rail, full set of tools, tire repair kit.
- Color** . . . MAXWELL Red. Option: MAXWELL Green.
- Price** . . . \$1,750, f. o. b. factory where manufactured.