

Maxwell

Maxwell-Briscoe
Motor Company

Tarrytown, N.Y.

Division United States Motor Company

Advance Description
1911 Catalogue

OWING to the urgent demand for literature of our 1911 product it is deemed advisable to issue this advance description for immediate distribution pending the completion of our more elaborate catalogue which will be ready about September first.

Foreword

Maxwell construction in the 1911 product is as near composite perfection as mechanical skill and expert workmanship can make it.

No element has been emphasized at the expense of another.

Each possesses quality and sufficient strength to establish unfailing reliability and efficiency.

Our policy to produce cars of composite strength and durability, as against cars of single virtues, is more than anything else responsible for the company's tremendous success. 35,000 owners attest it.

Maxwell Briscoe Motor Company

Main Office, Tarrytown, N. Y.

Factories:

Tarrytown

New Castle

Providence

PRICE: \$1600 fob. Factory
(With Magneto)

EQUIPMENT: Two gas lamps; generator; two oil side lights; one oil tail light; horn with flexible tube; tool box, full set of tools, tire repair kit.

Top and Wind Shield Extra.

Maxwell Model E A

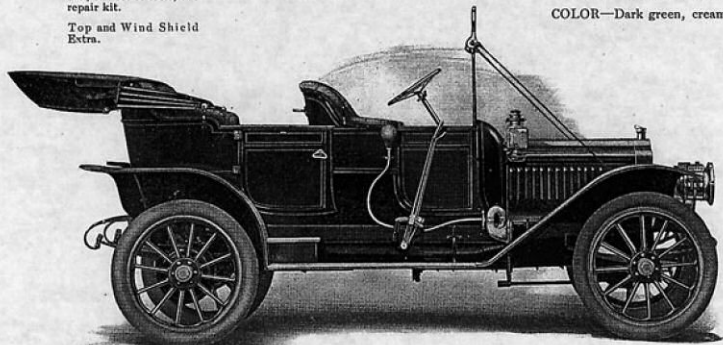
TOURING CAR

Five passenger

With fore door

Four cylinder, thirty horsepower

COLOR—Dark green, cream wheels



MOTOR— $4\frac{1}{4} \times 4\frac{1}{4}$ inches. IGNITION—Dual, Magneto and Battery. TRANSMISSION—Sliding Gear, three speeds and reverse. WHEELBASE—110 inches. WHEELS—Artillery pattern. RIMS—Quick Detachable. TIRES— 34×4 inches. SPRINGS—Half elliptic front, three-quarter elliptic scroll rear.

PRICE: \$1600 fob. Factory
(With Magneto)

EQUIPMENT: Two gas lamps; generator; two oil side lights; one oil tail light; horn with flexible tube; tool box, full set of tools, tire repair kit.

Top Extra.

Maxwell Model G A

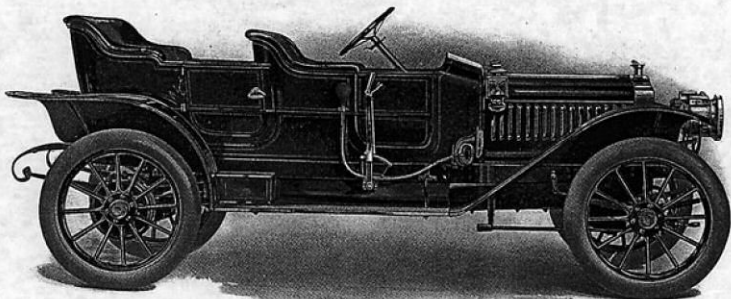
TOURING CAR

Four passenger—Close coupled body,

With fore door

Four cylinder, thirty horsepower

COLOR—Dark green, cream wheels



MOTOR— $4\frac{1}{4} \times 4\frac{1}{4}$ inches. IGNITION—Dual, Magneto and Battery. TRANSMISSION—Sliding Gear, three speeds and reverse. WHEELBASE—110 inches. WHEELS—Artillery pattern. RIMS—Quick Detachable. TIRES— 34×4 inches. SPRINGS—Half elliptic front, three-quarter elliptic scroll rear.

PRICE: \$1600 fob. Factory
(With Magneto)

EQUIPMENT: Two gas lamps; generator; two oil side lights; one oil tail light; horn with flexible tube; tool box, full set of tools, tire repair kit.

Top Extra.

Maxwell

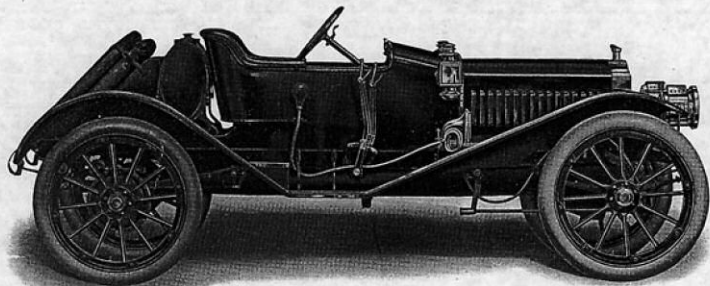
Model G A Roadster

ROADSTER

Two passenger

With fore door

Four cylinder, thirty horsepower



MOTOR— $4\frac{1}{4}$ x $4\frac{1}{4}$ inches. IGNITION—Dual, Magneto and Battery. TRANSMISSION—Sliding Gear, three speeds and reverse. WHEELBASE—110 inches. WHEELS—Artillery pattern. RIMS—Demountable. TIRES— 34 x 4 inches. SPRINGS—Half elliptic front, three-quarter elliptic scroll rear.

PRICE: \$1500 fob. Factory
(With Magneto)

EQUIPMENT: Two gas lamps; generator; two oil side lights; one oil tail light; horn with flexible tube; tool box, full set of tools, tire repair kit.

Top Extra.

Maxwell

Model E-11

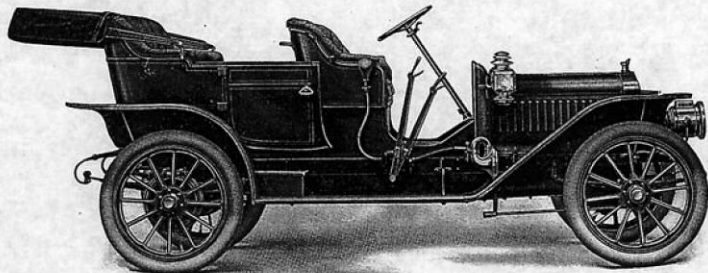
TOURING CAR

Five passenger

Without fore door

Four cylinder, thirty horsepower

COLOR—Dark blue, cream wheels



MOTOR— $4\frac{1}{4}$ x $4\frac{1}{4}$ inches. IGNITION—Dual, Magneto and Battery. TRANSMISSION—Sliding Gear, three speeds and reverse. WHEELBASE—110 inches. WHEELS—Artillery pattern. RIMS—Quick Detachable. TIRES— 34 x 4 inches. SPRINGS—Half elliptic front, three-quarter elliptic scroll rear.

PRICE: \$1575 f o b. Factory
(With Magneto)

EQUIPMENT: Top, side curtains, wind shield; two gas lamps; generator; two oil side lights; one oil tail light; horn with flexible tube; tool box, full set of tools, tire repair kit.

Maxwell

Model G-11

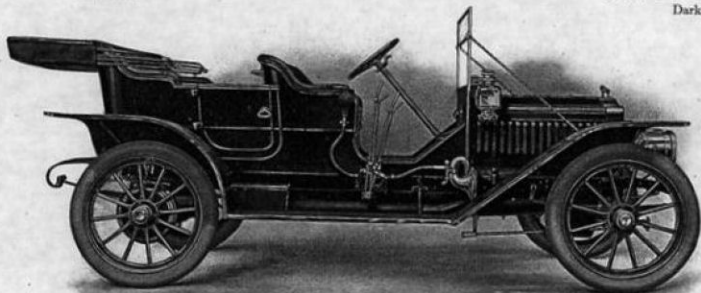
TOURING CAR

Four passenger—Detachable Tonnes

Without fore door

Four cylinder, thirty horsepower

COLORS—Red
Dark blue



MOTOR— $4\frac{1}{2}$ x $4\frac{1}{4}$ inches. IGNITION—Dual, Magneto and Battery. TRANSMISSION—Sliding Gear, three speeds and reverse. WHEELBASE—110 inches. WHEELS—Artillery pattern. RIMS—Quick Detachable. TIRES— 34 x 4 inches. SPRINGS—Half elliptic front, three-quarter elliptic scroll rear.

PRICE: \$1100 f o b. Factory
(With Magneto)

EQUIPMENT: Two gas lamps; generator; two oil side lights; one oil tail light; horn with flexible tube; full set of tools, tire repair kit.
Top Extra.

Maxwell

Model I

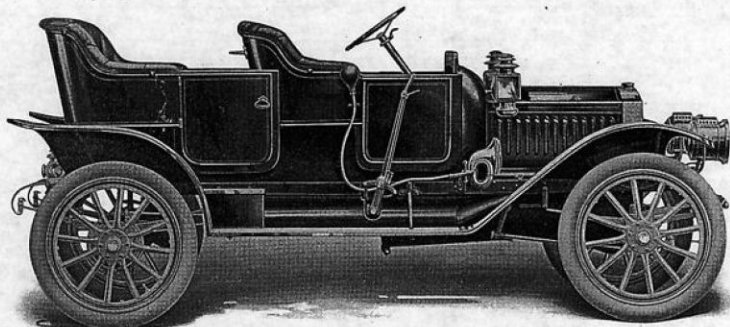
TOURING CAR

Four passenger

With fore door

Four cylinder, twenty-five horsepower

COLOR—Dark blue, cream wheels



MOTOR— 4 x 4 inches. IGNITION—Dual, Magneto and Battery. TRANSMISSION—Sliding Gear, three speeds and reverse. WHEELBASE—104 inches. WHEELS—Artillery pattern. RIMS—Quick Detachable. TIRES— 32 x $3\frac{1}{2}$ inches. SPRINGS—Semi-elliptic front, three-quarter elliptic scroll rear.

PRICE: \$1000 f o b. Factory
(With Magneto)

EQUIPMENT: Two oil side lights; one
oil tall light; horn with
flexible tube; full set of
tools, tire repair kit.
Gas Lamps and Top
Extra

Complete Equipment

Maxwell

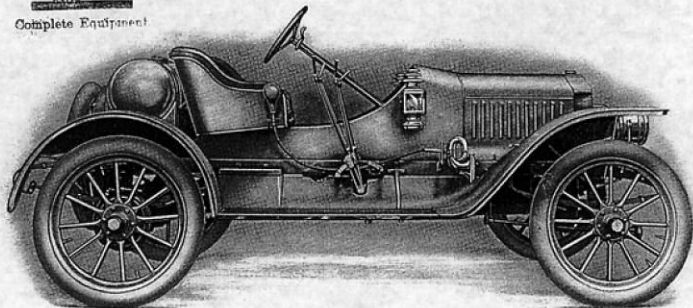
Model Q-4-11

ROADSTER

Two passenger

Four cylinder, twenty-two horsepower

COLOR—Red



The "Cup Defender" of the light car class.

MOTOR— $3\frac{1}{4} \times 4$ inches. IGNITION—Dual, Magneto and Battery. TRANSMISSION—Sliding Gear, three speeds and reverse. WHEELBASE—93 inches. WHEELS—Artillery pattern. TIRES— $30 \times 3\frac{1}{2}$ inches. SPRINGS—Half elliptic front, three-quarter elliptic scroll rear.

PRICE: \$600 f o b. Factory
(With Magneto)

EQUIPMENT: Two oil side lights; one
oil tall light; horn with
flexible tube; tire repair
kit.

Gas Lamps Extra.

Maxwell

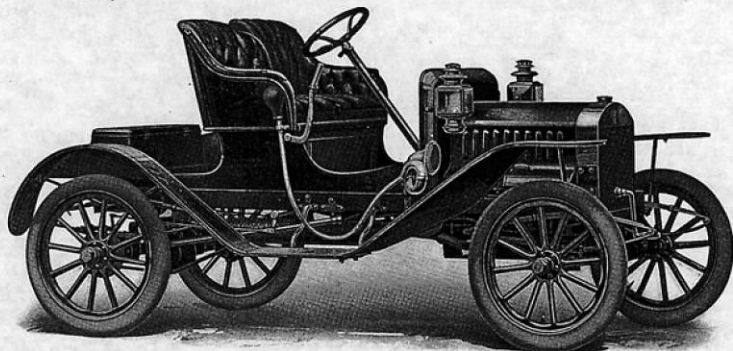
Model A B

RUNABOUT

Two passenger

Two cylinder, fourteen horsepower

COLOR—Dark blue, cream wheels



MOTOR— $4\frac{1}{2} \times 4$ inches. IGNITION—Dual, Magneto and Battery. TRANSMISSION—Planetary Gear. WHEELBASE—86 inches. WHEELS—Artillery pattern. TIRES— 28×3 inches. SPRINGS—Full elliptic, front and rear.

PRICE: \$900 fob. Factory
(With Magneto)

EQUIPMENT: Two oil side lights; one oil tail light; horn with flexible tube; full set of tools, tire repair kit.

Gas Lamps and Top

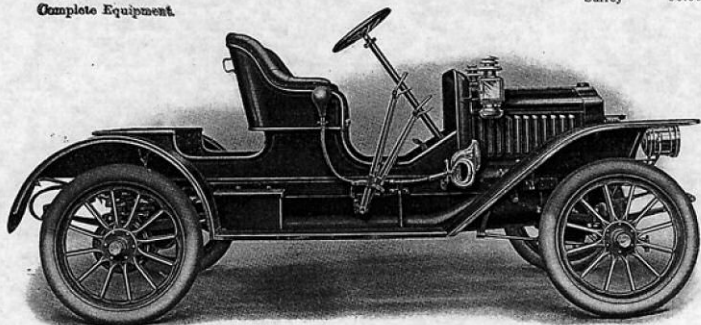
Complete Equipment.

Maxwell

Model Q-11

RUNABOUT

Two passenger
Four cylinder, twenty-two horsepower
COLORS—Light blue,
Dark blue, cream wheels
Rumble seat \$25.00
Surrey " 50.00



MOTOR— $3\frac{1}{4}$ x 4 inches. IGNITION—Dual, Magneto and Battery. TRANSMISSION—Sliding Gear, three speeds and reverse. WHEELBASE—93 inches. WHEELS—Artillery pattern. TIRES—30 x $3\frac{1}{2}$ inches. SPRINGS—Half elliptic front, three-quarter elliptic scroll rear.

PRICE: \$1000 fob. Factory
(With Magneto)

EQUIPMENT: Two oil side lights; one oil tail light; horn with flexible tube; full set of tools, tire repair kit.

Gas Lamps and Top
Extra

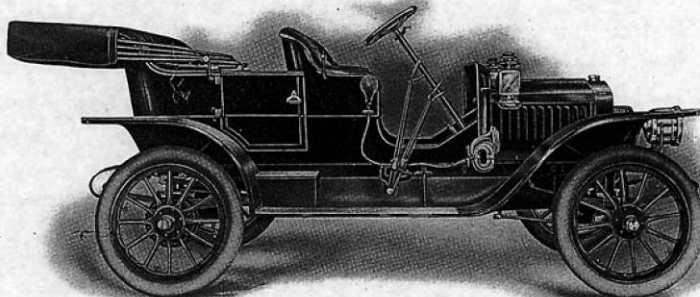
Complete Equipment

Maxwell

Model Q-3-11

TOURING CAR

Four passenger
Four cylinder, twenty-two horsepower
COLORS—Light blue,
Dark blue, cream wheels



MOTOR— $3\frac{1}{4}$ x 4 inches. IGNITION—Dual, Magneto and Battery. TRANSMISSION—Sliding Gear, three speeds and reverse. WHEELBASE—93 inches. WHEELS—Artillery pattern. TIRES—30 x $3\frac{1}{2}$ inches. SPRINGS—Half elliptic front, three-quarter elliptic scroll rear.

Some 1910 Achievements

- Winner: Meyersdale, Pa. 30 HP. won 5 M race for Windsor Cup.
- " Ascot Park, Cal. 30 HP. wins 25 M race, time 28 M.
- " Savannah-Jacksonville End. Run 6 perfect scores.
- " Munsey Tour. Q won trophy in its class.
- " Amarillo, Tex. 30 HP. won 5 M race, time 5:08.
- " Salina, Kan. End. Run AA perfect score.
- " Redlands, Cal. 30 HP. made fastest time 15 Mile high Climb 22 m. 46 sec.
- " 14 Perfect scores out of 15 entries End. Runs entering Atlanta.
- " Four days around Florida. 1st and 2d in Run-about Class.
- " Sacramento Hill Climb, 30 HP. 1 and 3 in class, 2d in free for all 2:00½.
- " Lynchburg to Roanoke, Va. G won first prize.
- " Ingle side, Cal. 30 HP. won 5 M hdkp. race, time 4:40.30.
- " Ingle side, Cal. 30 HP. won 10 M hdkp. race, time 8:19.30.
- " Defeated Barney Oldfield and other high powered cars in both of these events.
- " Harrisburg-Atlantic City Run AA perfect score.
- " Delaware Valley End. Run AA perfect score.
- " Around N. J. Reliability Run. 30 HP. 1 perfect score.
- " Santa Rosa, Cal. 30 HP. won 10 M race, time 10:22.
- " San Jose, Cal. 30 HP. won 5 M open race, time 5:09.
- " San Jose, Cal. 30 HP. won 5 M Handicap, time 5:00½.
- " Washington to Richmond End. Run. Perfect Scores in classes A and C.
- " GLIDDEN TOUR, Maxwell No. 7 } Best
" CHICAGO TROPHY, Maxwell No. 107 } team
score



Our Guarantee

We warrant the motor vehicles manufactured by us for ninety days after the date of shipment, this warranty being limited to the furnishing at our factory of such parts of the motor vehicle as shall, under normal use and service, appear to us to have been defective in material or workmanship.

This warranty is limited to the shipment to the purchaser, without charge except for transportation, of the part or parts intended to replace the part or parts claimed to have been defective, and which, upon their return to us at our factory for inspection, we shall have determined were defective, and provided the transportation charges for the parts so returned have been prepaid.

We make no warranty whatever in respect of tires, rims, radiators, magnetos, coils, batteries, or lamps.

The condition of this warranty is such that if the motor vehicle to which it applies is altered or repaired outside of our factory, our liability under this warranty shall cease.

The purchaser understands and agrees that no warranty of the motor vehicle is made, or authorized to be made, by the company, other than that herein above set forth.

Maxwell-Briscoe
Motor Company
Tarrytown, N.Y.