

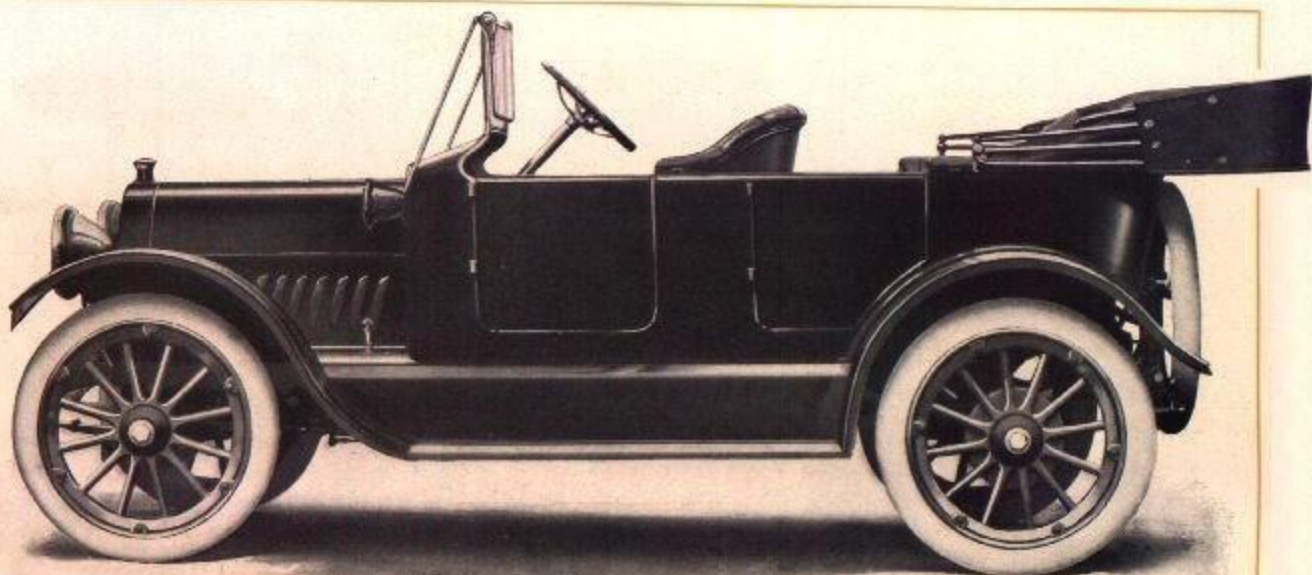
The
LITTLE
"SIX"

THE PRODUCT OF EXPERIENCE

1913



REPUBLIC MOTOR COMPANY
OF MICHIGAN
DETROIT, MICHIGAN, U. S. A.



The "LITTLE SIX," fully equipped, **\$1285.00**

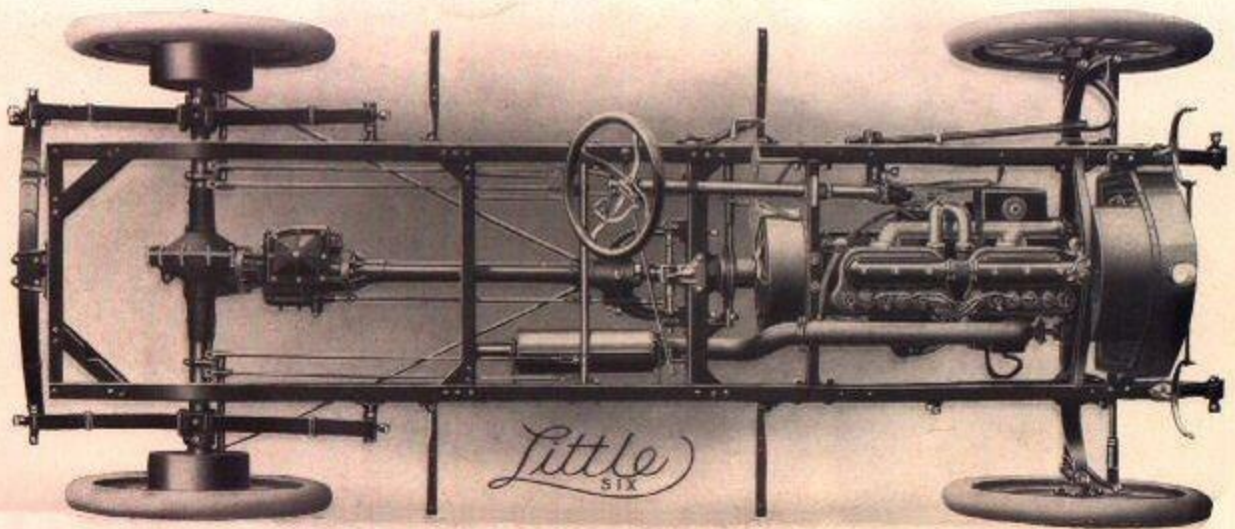
F. O. B. Flint

SPECIFICATIONS "LITTLE SIX"

Wheel Base	106-inch.	Cooling	Thermo Syphon system. Belt driven fan.
Tread	56-inch or 60-inch.	Front Axle	Drop forged "I" beam.
Motor	Six-cylinder, "L" head, 3 $\frac{5}{8}$ -inch bore, 4 $\frac{1}{4}$ -inch stroke. Three-point suspension.	Rear Axle	Semi-floating. Special design.
Cylinders	Cast in blocks of three.	Brakes	Rear axle brakes—Foot pedal and lever. Both internal expanding in 12-inch drum; lined with Raybestos.
Connecting Rods	Drop forged "I" beam section. Die cast babbitt bearings.	Wheels	32x4 Artillery type with demountable rims. Spokes 1 $\frac{3}{8}$ -inch. 12 in front and 12 in rear. Bolts on hub flanges covered by shields.
Crank Shaft	Drop forging. Counterweights forged integral with shafts and carefully tested and balanced before assembling.	Frame	Pressed steel.
Cam Shaft	Drop forged integral.	Springs	Semi-elliptic in front— $\frac{3}{4}$ platform in rear.
Timing Gears	Helical type.	Gasoline Tank	Gasoline tank holding 18 gallons located under front seat.
Lubrication	Vacuum oil system.	Steering Gear	Worm and gear type. Left hand drive.
Carburetor	Special for Little Motor—exhaust heated and automatic. Controlled from steering post and by foot accelerator.	Equipment	Fully equipped with tailored top and cover, windshield, speedometer, demountable rims, tire holder on rear, electric lights, electric horn, etc.
Ignition	Magneto, special for Little Motor.	Price.	F. O. B. Flint, Michigan, \$1285.
Lighting	Generator direct driven by motor—all 5 lamps.		
Clutch Cone	15 $\frac{1}{8}$ -inch diameter. Leather faced with adjustable compensating springs.		
Transmission	Selective type, three speeds forward and reverse. Center control.		

Extra—Gray & Davis Electric Self-Starter attached, \$100

"THE PRODUCT OF EXPERIENCE"

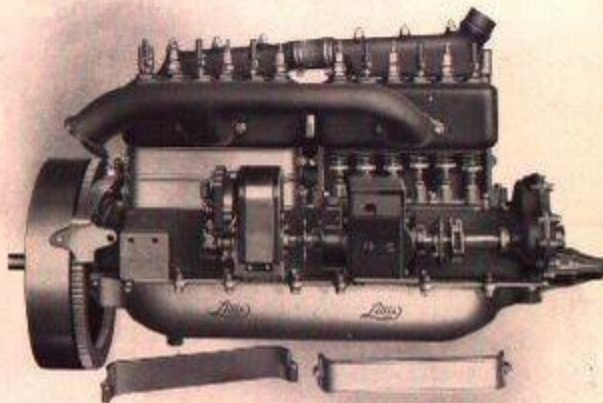


The "LITTLE SIX" Chassis—Strong, Rigid, Clean-cut

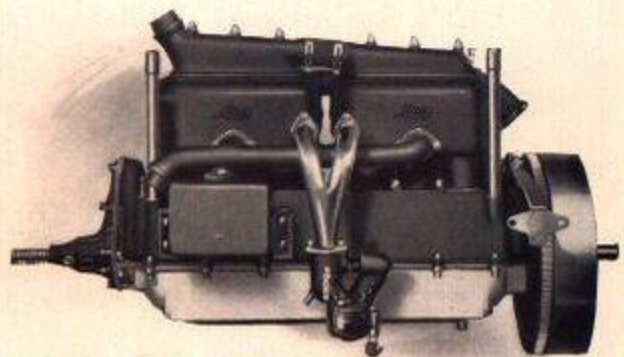


ATTRACTIVE FRONT APPEARANCE

The "LITTLE SIX" Motor with its large valves (enclosed), automatically heated carburetor and efficient oiling system, together with its quiet operation, make a motor of unusual merit and distinction.

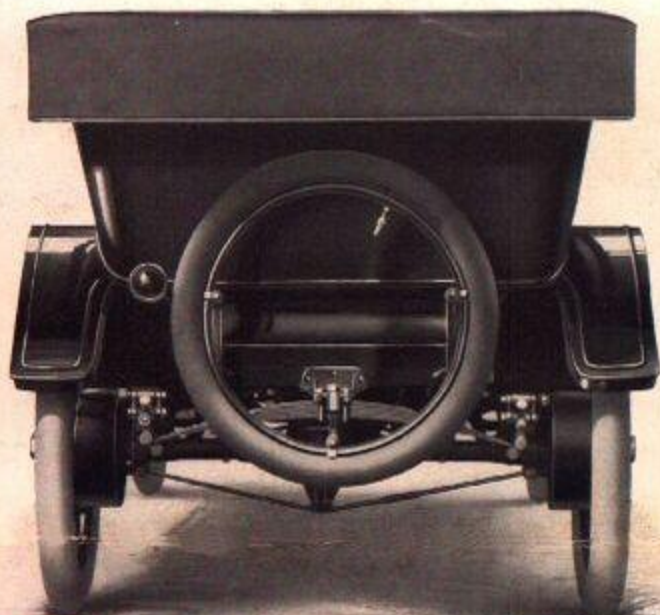


IGNITION SIDE



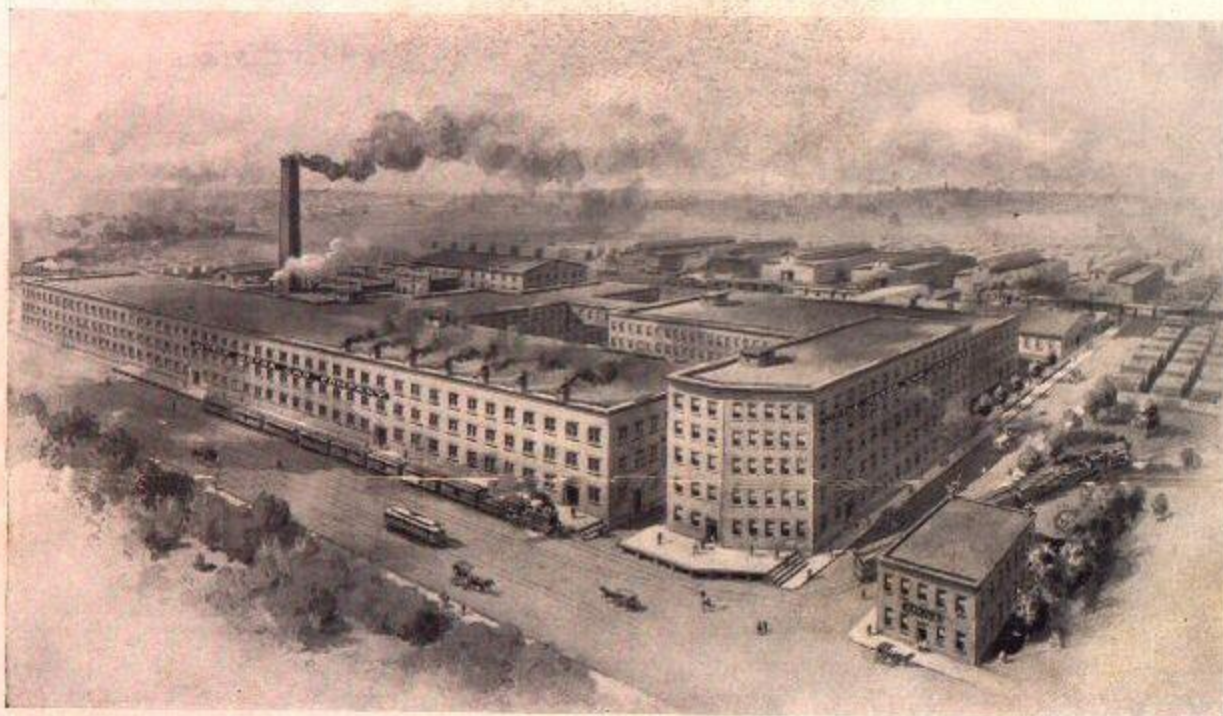
CARBURETOR SIDE

"THE PRODUCT OF EXPERIENCE"



JUST AS ATTRACTIVE—GOING OR COMING

The best of illustrations cannot do the "LITTLE SIX" full justice—you'll say so when you see it



Home of the "LITTLE SIX" Car

Six and one-half acres of actual floor space This entire plant is modern and well equipped—devoted exclusively to building LITTLE Motor cars and *building them just right*

REPUBLIC MOTOR COMPANY of Michigan
DETROIT

JOSEPH MACK PRINTING HOUSE, DETROIT