

**BARTLETT
MOTOR
CARS**



CATALOGUE No. 1

Canadian

Bartlett

Automobile

Company

Limited

MANUFACTURERS

OF

"THE BARTLETT CAR"

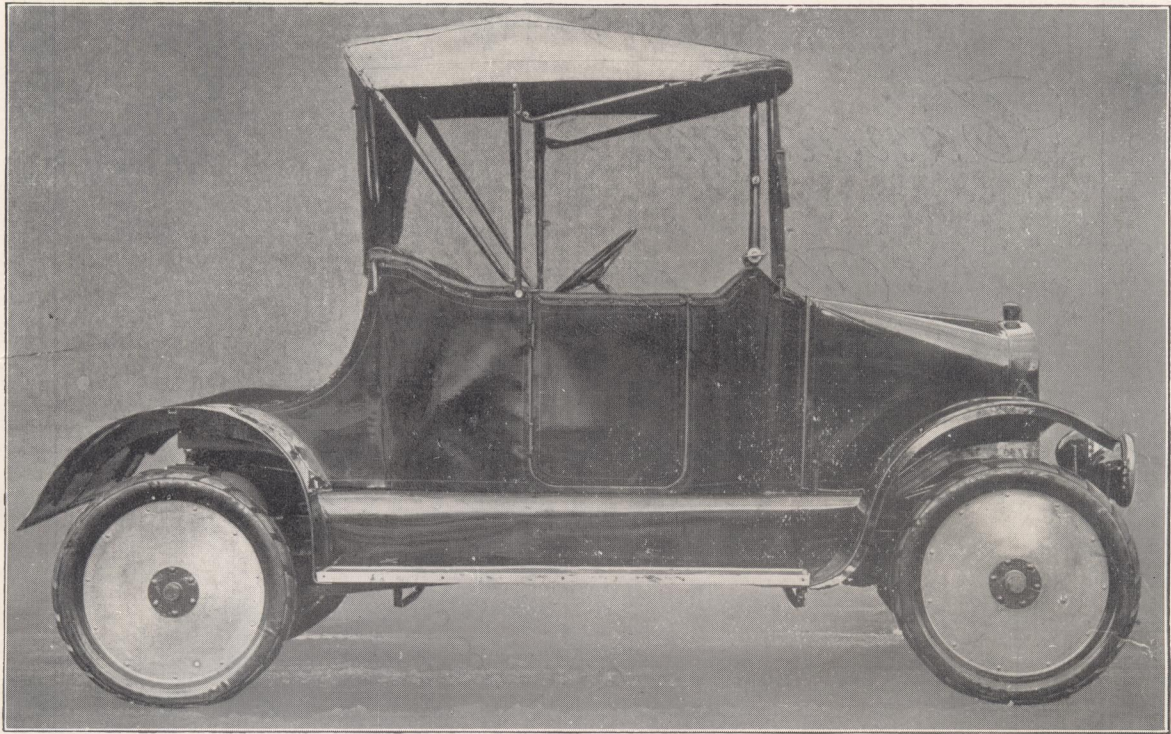
1257-61 QUEEN ST. WEST

PHONE PARK 1635

TORONTO

Better buy a "Bartlett"

Price \$655.00 Fully Equipped



NOTE
THE RACING WHEELS
— AND —
COWL DASH

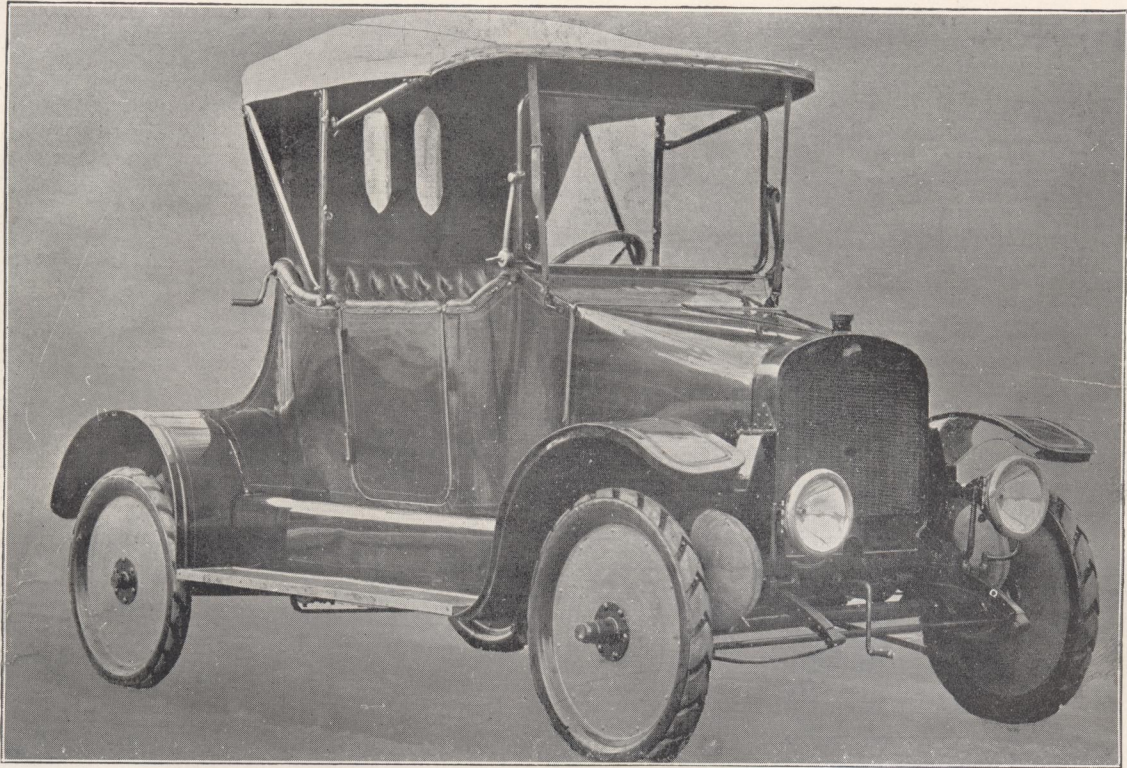
"BARTLETT"

A CANADIAN CAR

FOR CANADIANS

Better Buy a "Bartlett"

Price \$655.00 Fully Equipped



Standard 1915 "BARTLETT" Model A-2 Roadster

The "BARTLETT CAR" is the latest production of the Automobile industry, it entirely eliminates pneumatic tires. It is equipped with solid rubber tires and "BARTLETT" Air Cushions setting above the axle of the car to take up the road vibration instead of the old-fashioned steel springs.

The "BARTLETT CAR" has a double frame, one carrying the engine and driving gear, the other frame carrying the body of the car making it a utility construction, the body can be removed and a light truck body placed on in 20 minutes without removing a single bolt or fender.

This feature of being able to remove the body so easily greatly simplifies the accessibility of all mechanical parts.

Some Reasons why your New Car should be a "Bartlett"

It has no Pneumatic Tires to puncture

It has no Steel Springs to break

It requires no Tire Chains

It gives more Mileage to a gallon of gasoline

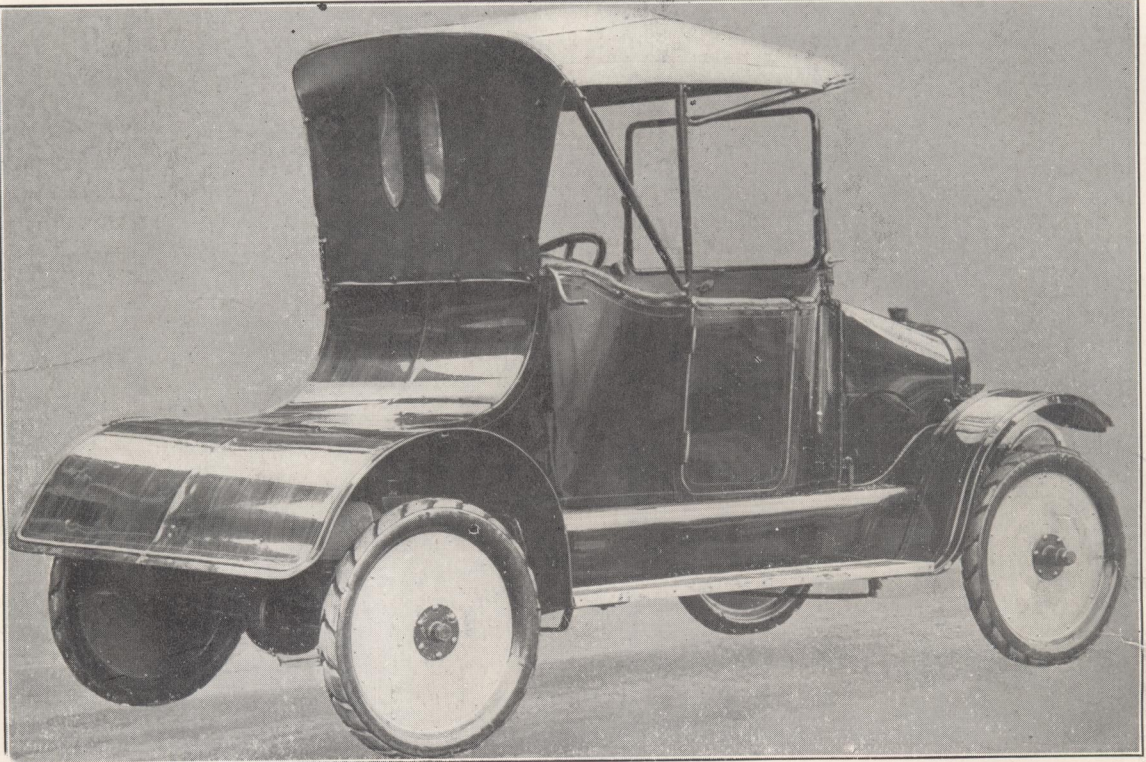
You require no Spare Tire

It is Smoother to ride in

AND YOUR LIFE IS SAFE

Better Buy a "Bartlett"

Price \$655.00 Fully Equipped



Standard 1915 "BARTLETT" Model A-2 Roadster

Rear view showing smooth, clean cut, graceful design leaving no receptacle to retain mud or dust

Questions about Pneumatic Tired Machines

Is your life or the lives of your passengers safe if you have a blow-out in a front tire when travelling along an ordinary deep ditched country road?

What would you do if you had a puncture on a muddy clay road when out pleasure driving?

What if you are out on a clay road without tire chains and it starts to rain?

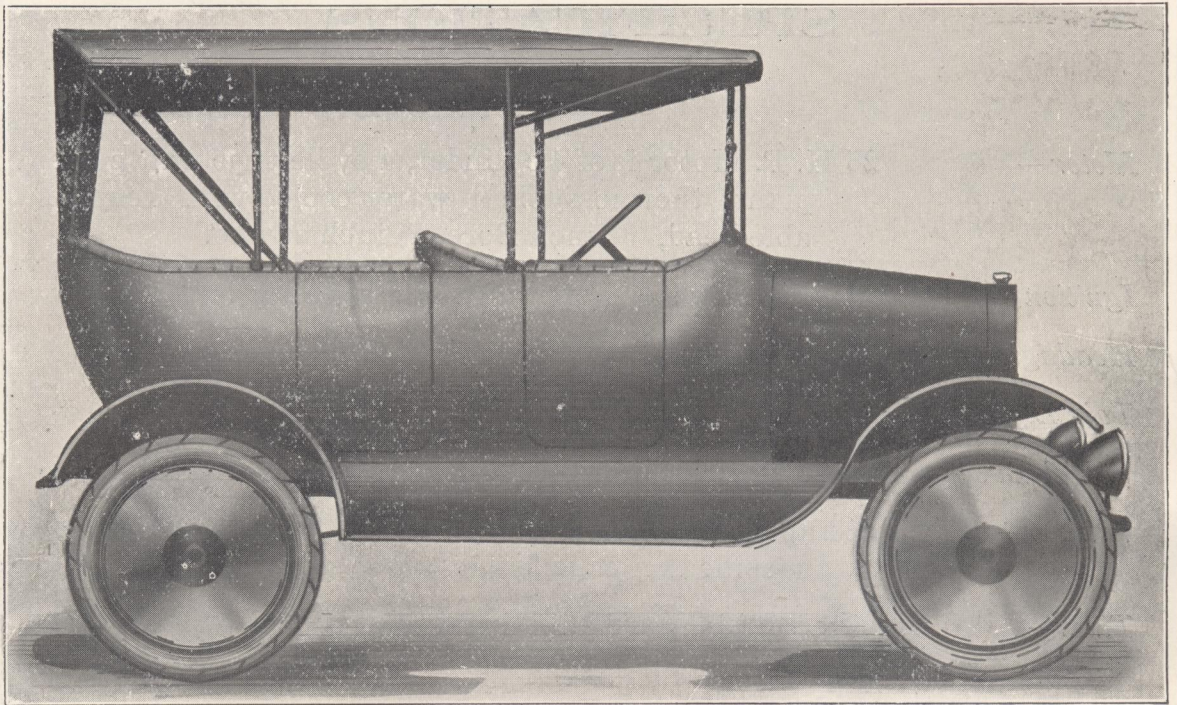
What if you had to catch a train or was keeping a business appointment and had a puncture?

What if you were a Doctor and called on in a case of serious sickness and had a puncture?

Don't take any of these Chances, Forewarned is Forearmed, so Buy a "BARTLETT" and see the other fellow have the Pneumatic Tire Troubles.

Better buy a "Bartlett"

Price \$755.00 Fully Equipped



Standard 1915 "BARTLETT" Model A-3 Touring Car

The above Model A-3 Touring Car like our Model A-2 Roadster has been designed with all the modern features of a streamline body, cowl dash and taper bonnet leaving a smooth neat outward appearance.

Like the Model A-2 Roadster the body can also be removed and a separate Truck, Limousine, Couplet or Roadster body put on in its stead in 20 minutes.

The Model A-3 is also equipped with the BARTLETT Air Cushions and Solid Rubber Tires giving great resiliency to the car.

The Upholstering and Cushions are very deep and wide with 42 inch front seat and 47 inch rear seat making it a large roomy comfortable seating car.

Either of the Models A-2 or A-3 will be equipped with wire wheels if so desired by the purchaser at an additional cost of \$25.00 per set but where a heavy load will be carried we especially recommend our disc racing wheel owing to their superior strength.

SPECIFICATIONS

<i>Motor</i> —	25 H. P. Motor is of 4 cylinder, 4 cycle type unit power plant, thermo-syphon water cooled with removable head, 3½ inch Bore, 4½ inch stroke.
<i>Ignition</i> —	Splitdorf Timer-Distributor and Batteries.
<i>Headlights</i> —	Acetyline Gas.
<i>Tail Light</i> —	Coal Oil.
<i>Wheel Base</i> —	100 inch Standard 56 inch tread.
<i>Wheels</i> —	Stamped steel disc, racing type or wire wheels as specified on page 5.
<i>Tires</i> —	28 x 3 BARTLETT Sectional solid rubber 22 separately removable sections on each wheel.
<i>Springs</i> —	4 BARTLETT Air Cushions; each with four bearing point suspension for absorbing the road vibration.
<i>Frame</i> —	Upper and Lower Frame of "U" sectional pressed steel connected together by crosslacing of steel rods, the lower frame passing through centre of air cushion and carrying the engine and driving gear, upper frame resting on top of air cushion and carrying the body of the car.
<i>Drive</i> —	Left Hand Centre Control.
<i>Clutch</i> —	Multiple Disc.
<i>Transmission</i> —	Sliding Gear, three speeds forward, one reverse.
<i>Brake</i> —	Internal Expanding.
<i>Gasoline</i> —	Under Bonnet attached to Dash, Gravity Feed.
<i>Rear Axle</i> —	Gear Ratio 4 to 1, Friction Differential.
<i>Body</i> —	Streamline Type.

GUARANTEE

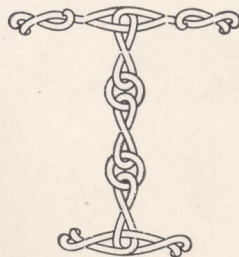
We Guarantee "BARTLETT" Motor Cars for ninety days from date of delivery by us or our authorized dealers to purchaser, this Guarantee being limited to the replacement of repairs at our factory of such parts of the car as shall under normal use and service be judged by us to have been defective in material or workmanship.

This Guarantee is limited to the shipment to the purchaser or dealer without charge except for transportation for the part or parts claimed to have been defective, which parts upon their return to us at our Factory for inspection, transportation prepaid, we shall have determined were defective.

This Guarantee does not apply to repairs or replacements made necessary by accidents, carelessness, negligence or abuse. It does not include adjustments, tuning up, general overhauling, or replacement of parts worn out in service.

Our liability under this guarantee shall cease if the car to which it applies is altered or repaired outside of our factory or the shops of our authorized dealers.

The Purchaser understands and agrees that no warranty of the motor vehicle is made or authorized to be made, by the Company, other than that herein above set forth.



ALL PRICES F.O.B. TORONTO