

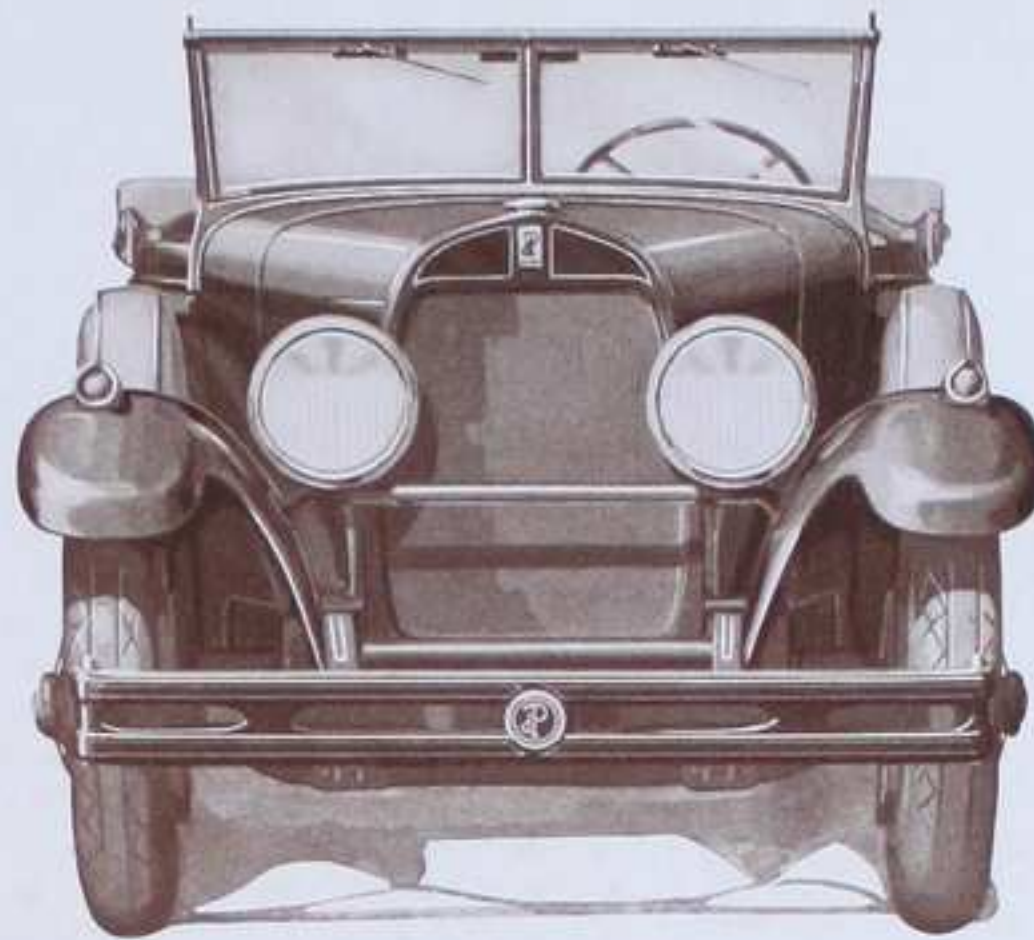


MOTOR CARS

IN every community a few people, whom superior intelligence has made leaders, stand out conspicuously. These are recognized at once by their fastidious tastes, individual pursuits and distinctive belongings.

Among such people, we are proud to say, the du Pont motor car has found favor. Some are still running the first cars, refusing to be parted from them, while others have turned to du Pont for the second, third, or fourth time since the first car left our works in 1919.

In describing the du Pont, therefore, we will not overburden the page with new terms and



superlatives in an attempt to outdo others.

Every du Pont automobile receives the closest attention from the du Pont Motors staff, our chief engineer personally supervising the road test and adjustment of each car.

The owner may choose the color scheme of his car.

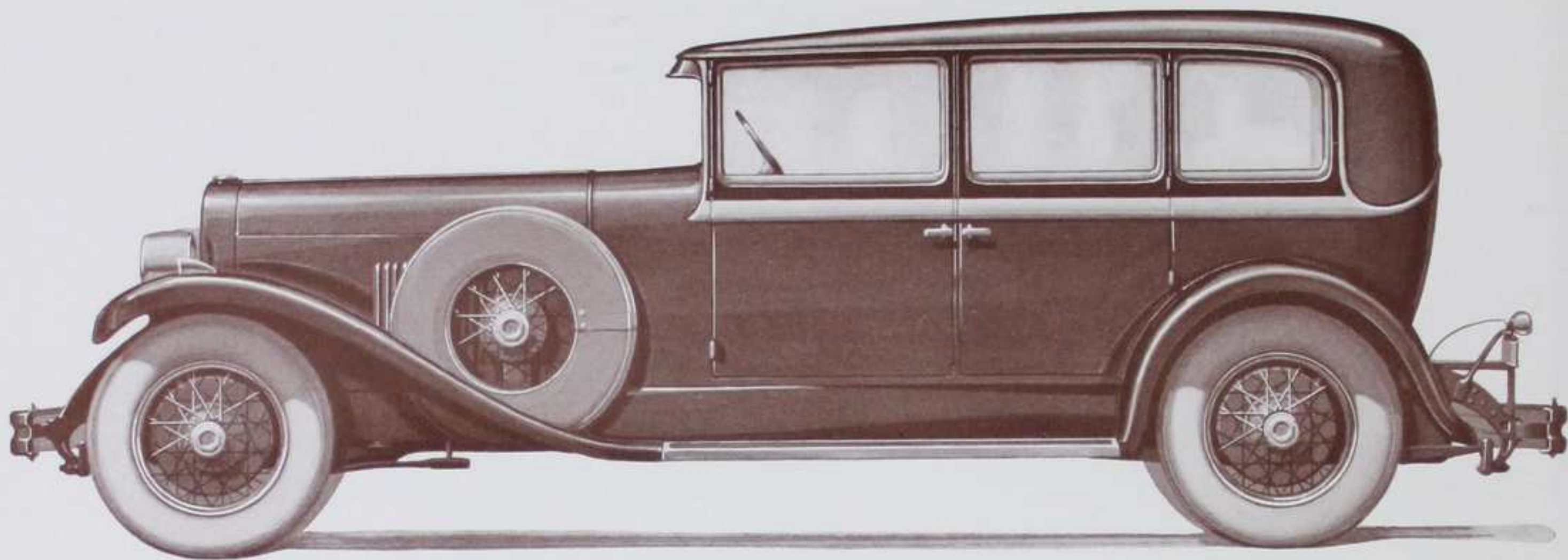
The seating and steering wheel position may be altered to suit his comfort.

Orders for special bodies will be skillfully executed.

We are able to maintain this unusual standard of craftsmanship and custom work by our policy of limiting production to not more than two cars a day.

DU PONT MOTORS, INC., Wilmington, Delaware

DU PONT

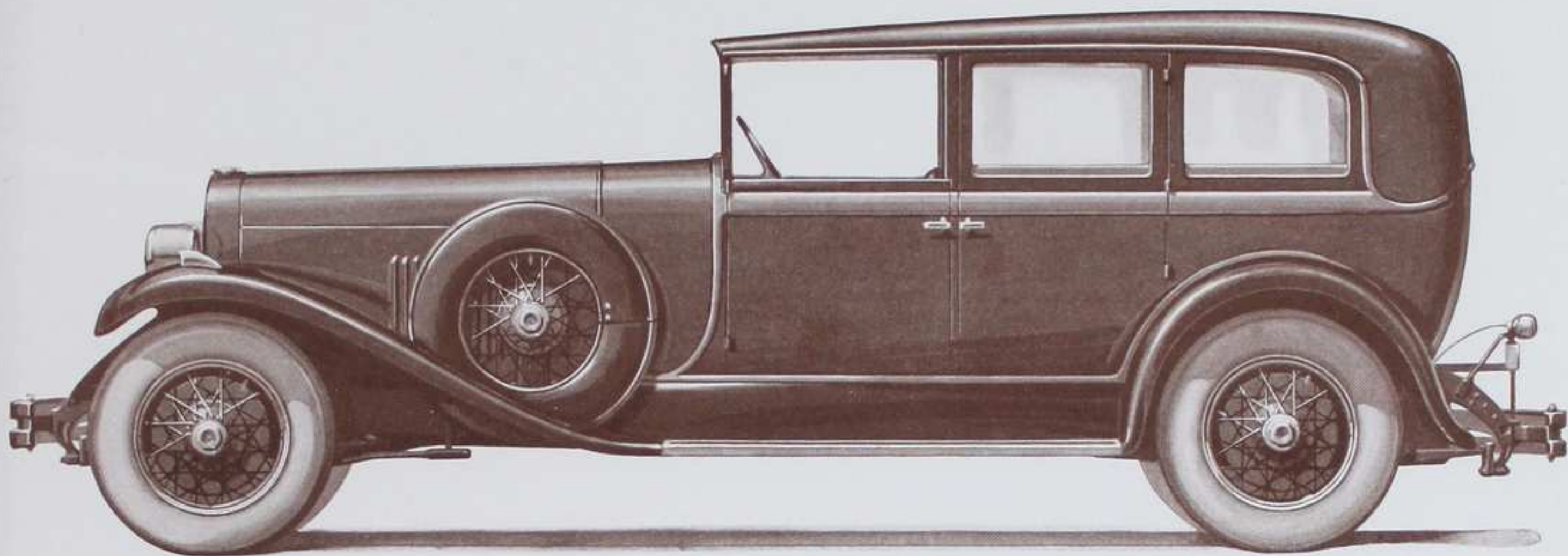


SEVEN-PASSENGER SEDAN

DUPONT MOTORS INC

DU PONT

WILMINGTON DEL.

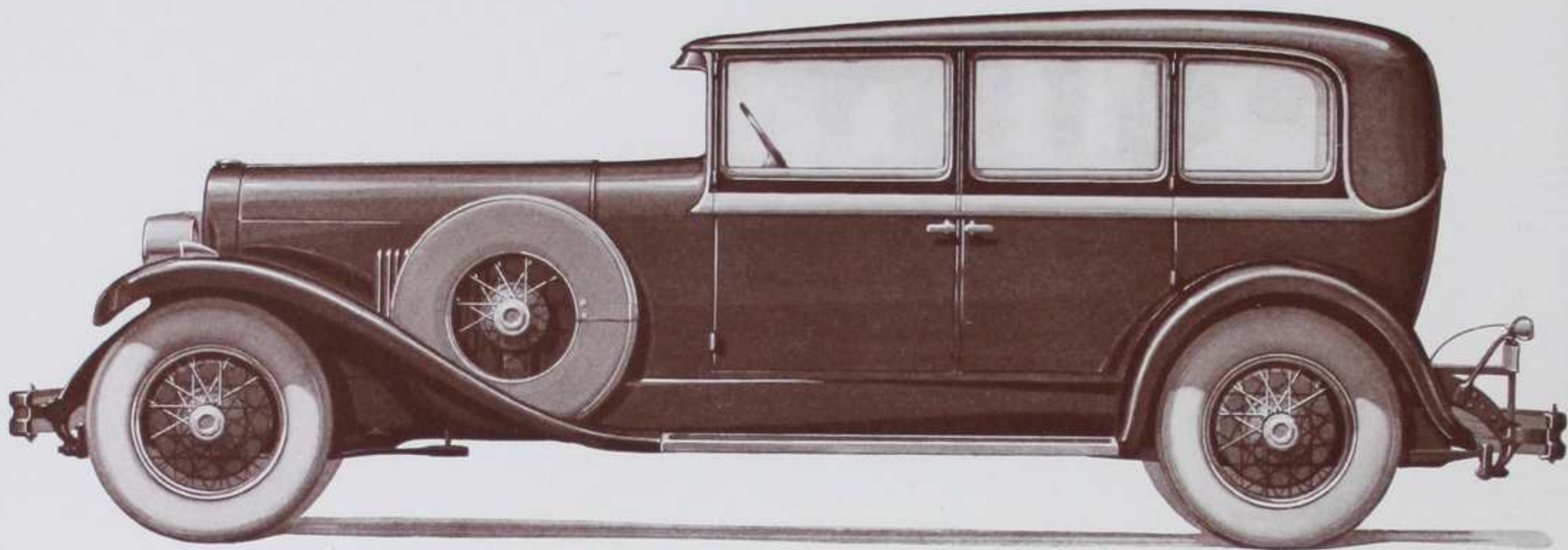


SEVEN-PASSENGER LIMOUSINE

DUPONT MOTORS INC

DU PONT

WILMINGTON DEL

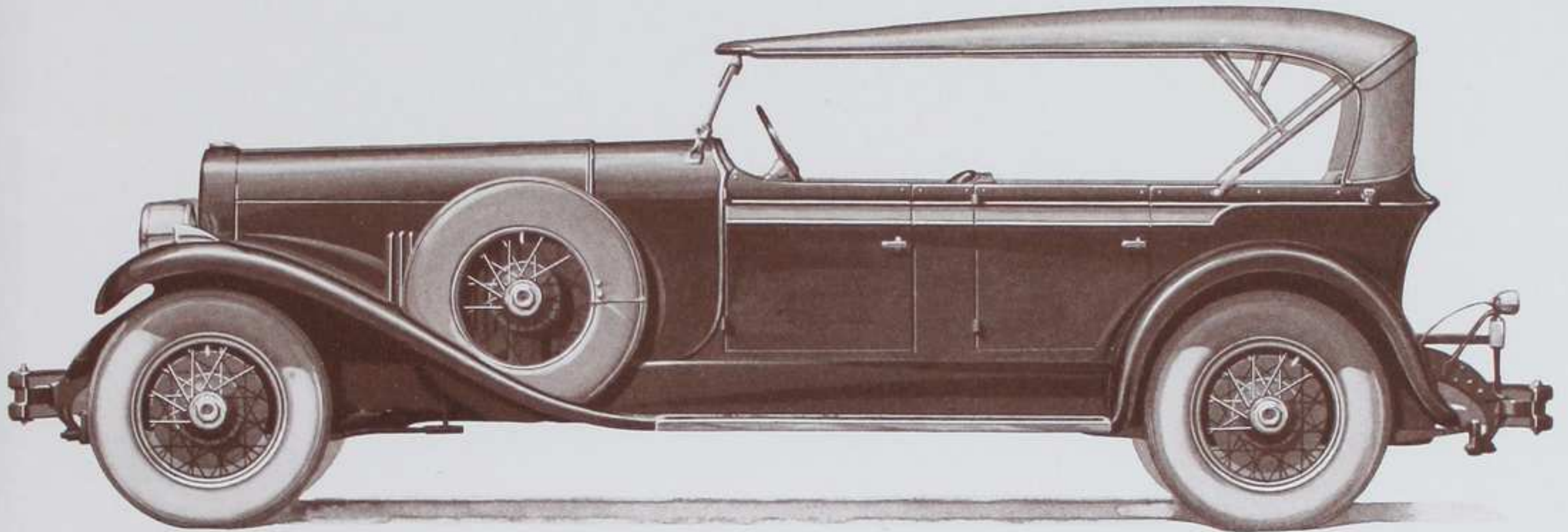


FIVE-PASSENGER SEDAN

DUPONT MOTORS INC.

DU PONT

WILMINGTON DEL.

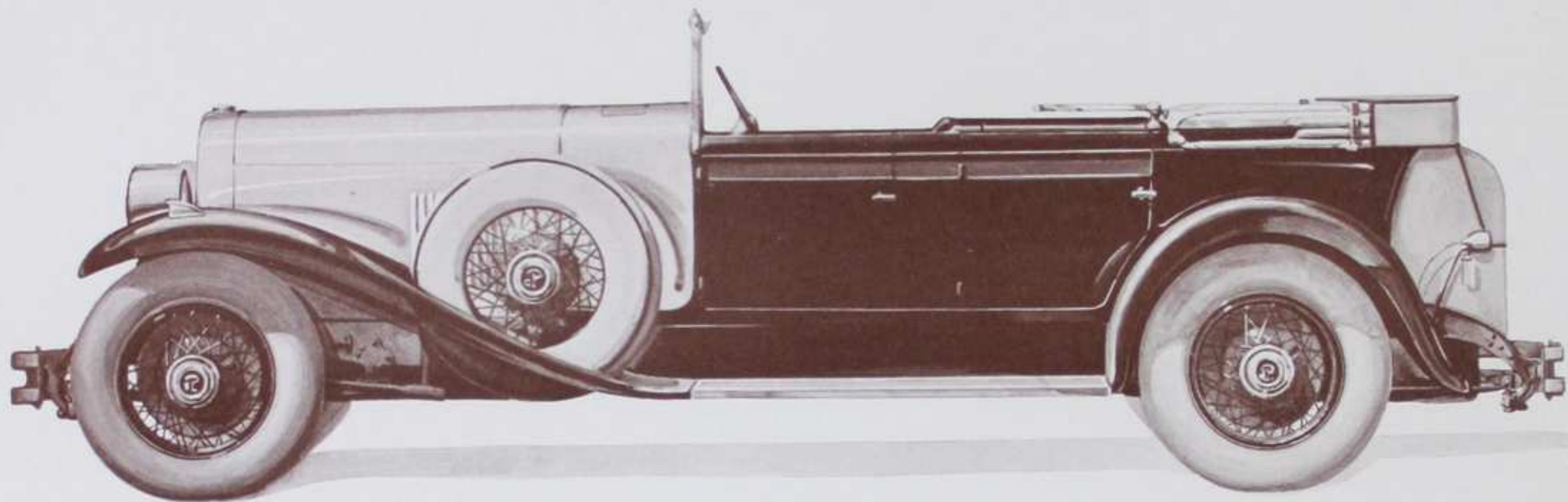


SEVEN-PASSENGER TOURING

DUPONT MOTORS INC

DU PONT

WILMINGTON DEL.

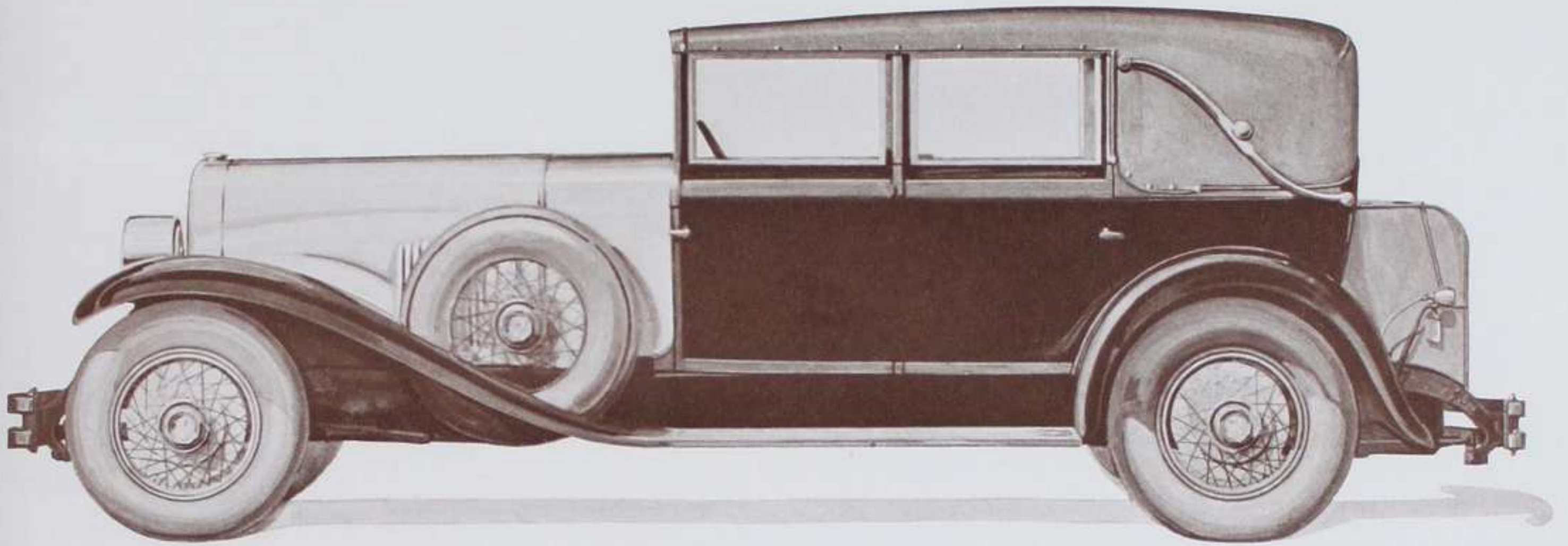


FIVE-PASSENGER SPORT PHAETON

DUPONT MOTORS INC

DU PONT

WILMINGTON DEL.



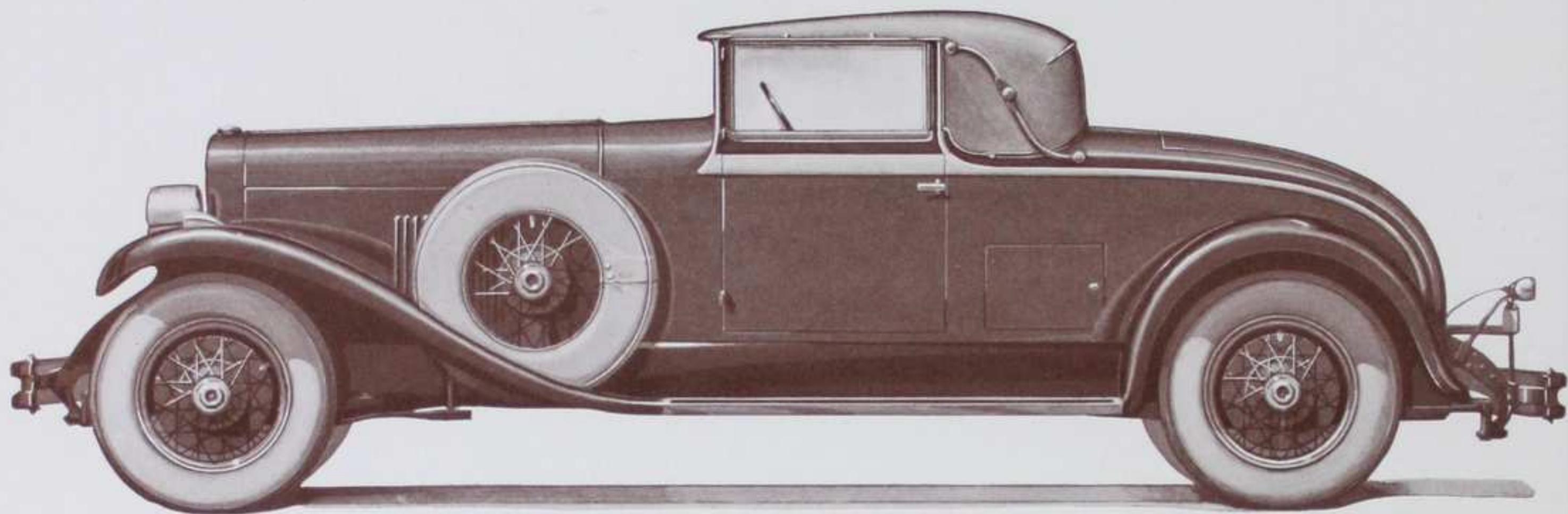
CONVERTIBLE SEDAN

DUPONT MOTORS INC.

DU PONT

WILMINGTON DEL.

10

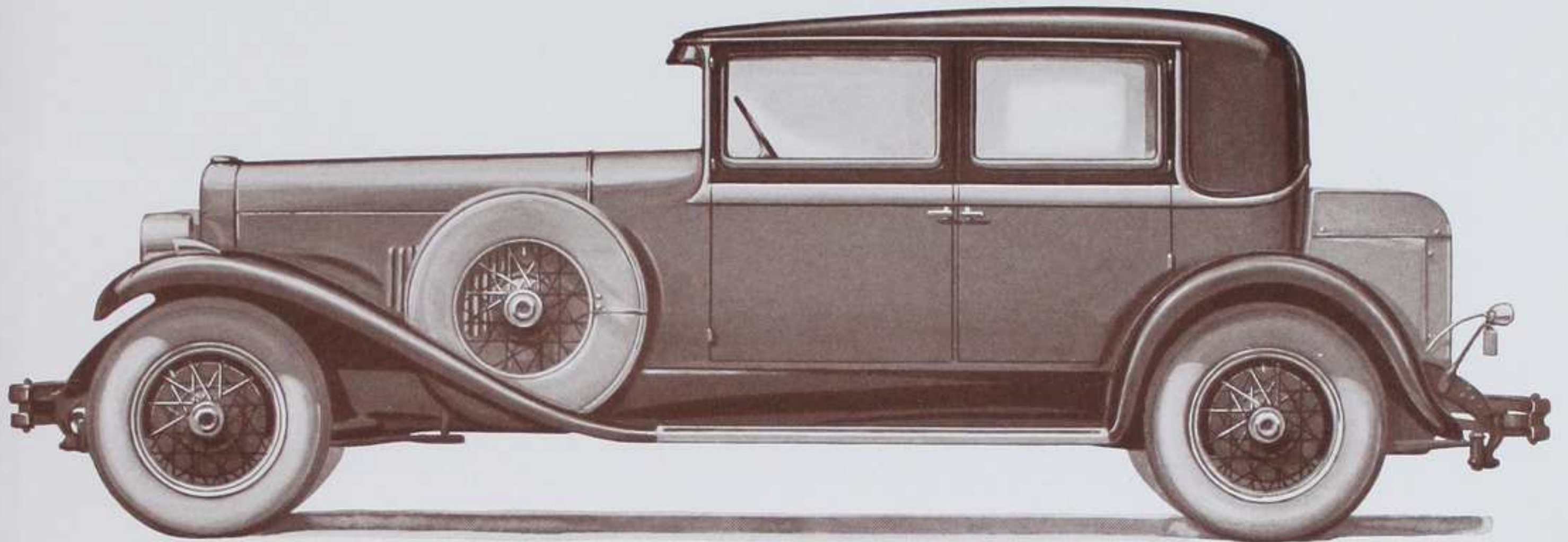


CONVERTIBLE COUPE

DUPONT MOTORS INC.

DU PONT

WILMINGTON DEL.



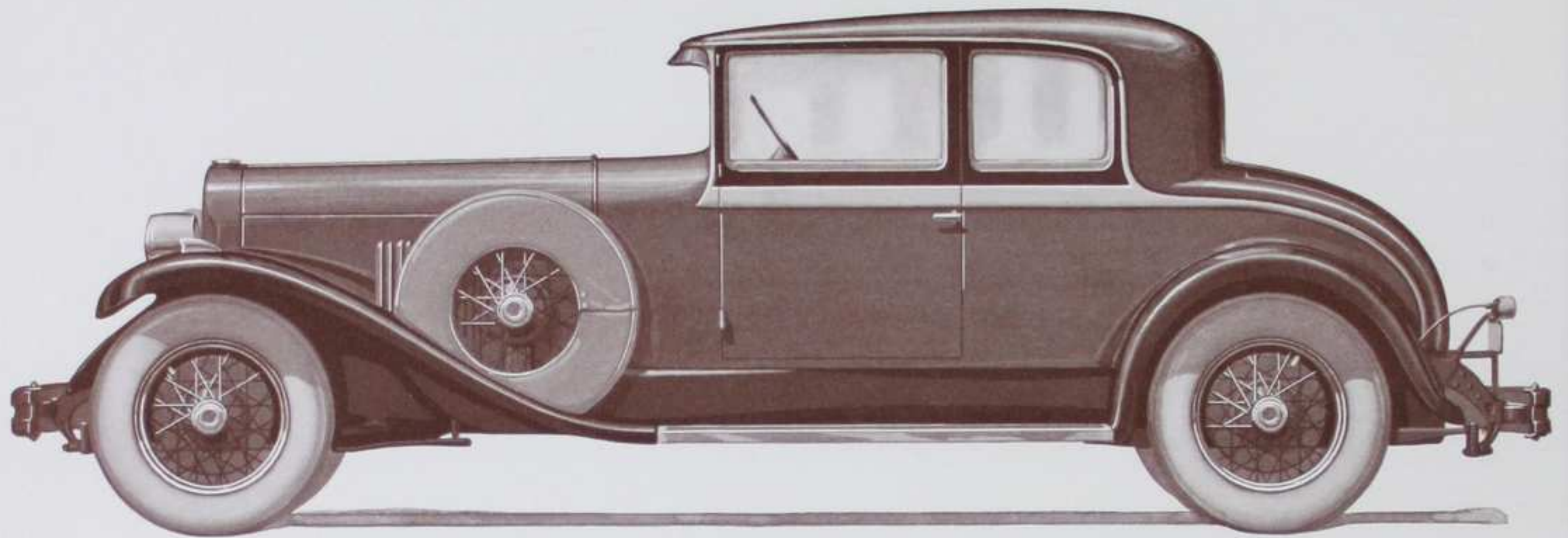
FIVE-PASSENGER CLUB SEDAN

DUPONT MOTORS INC

DU PONT

WILMINGTON DEL.

A

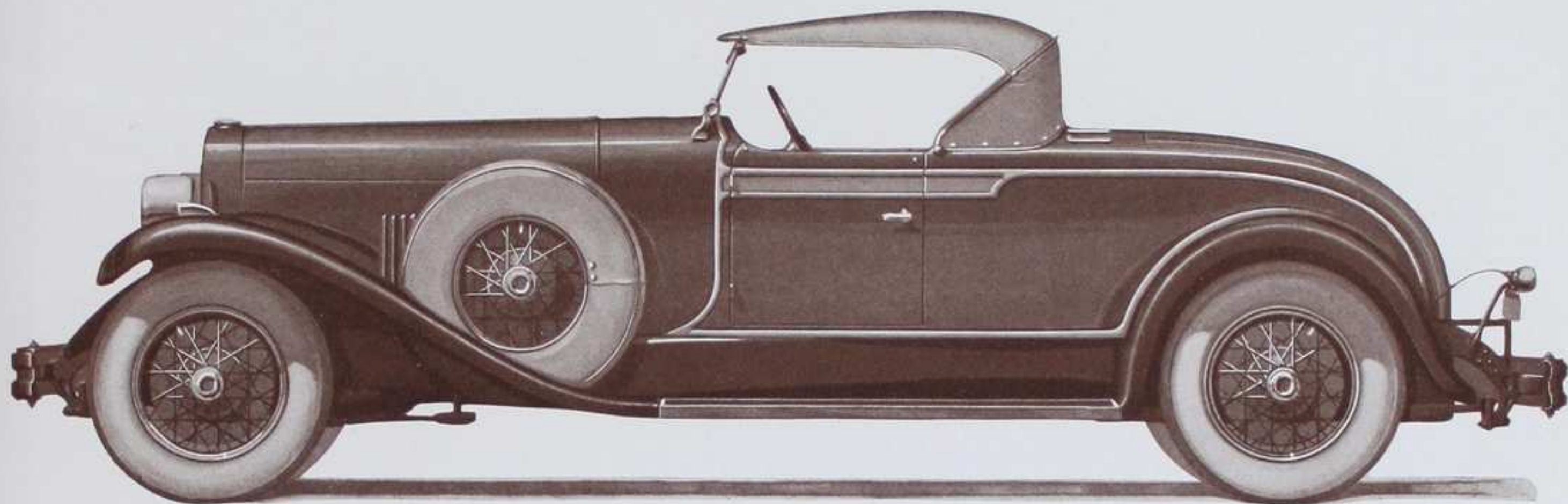


FIVE-PASSENGER VICTORIA

DUPONT MOTORS INC.

DU PONT

WILMINGTON DEL.



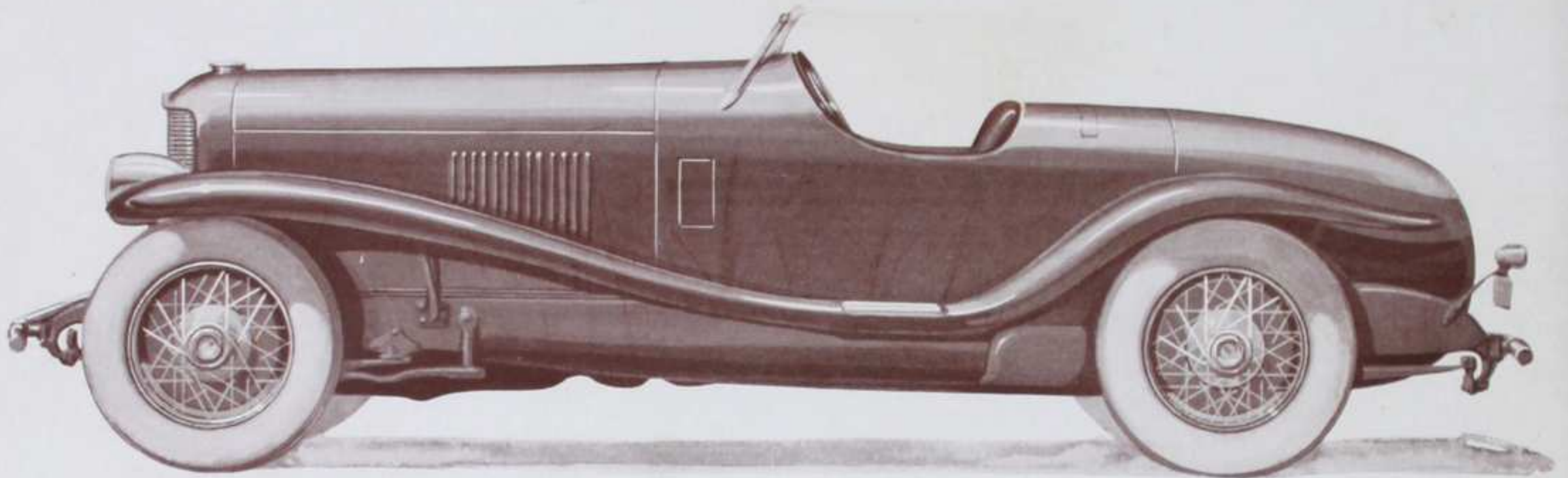
RUMBLE SEAT SPORT ROADSTER

DUPONT MOTORS INC.

DU PONT

WILMINGTON DEL.

c



SPEEDSTER

DUPONT MOTORS INC

DU PONT

WILMINGTON DEL

SPECIFICATIONS — Model G

MOTOR—L Head type—eight cylinders, cast en bloc; detachable head—bore $3\frac{3}{8}$ " ; stroke $4\frac{1}{2}$ " S. A. E. rating—36.45 H. P. Piston displacement, 322 cubic inches.

VALVES—Special heat-resisting alloy.

PISTONS—Light weight aluminum alloy.

CONNECTING RODS—Drop-forged steel, specially heat-treated.

CRANKSHAFT—Drop-forged, heat-treated steel crank-shaft, supported by five large bearings.

CAMSHAFT—Seven bearings.

CAMSHAFT DRIVE—By link-belt chain. Automatic Idler Adjustment.

MOTOR OILING SYSTEM—Force feed pressure system by gear pump.

MOTOR COOLING SYSTEM—Cooling is by centrifugal pump; large fin and tube type radiator with $5\frac{1}{2}$ gallon capacity.

CARBURETION—Dual Carburetion with dual Intake Manifold assuring equal distribution.

ELECTRIC SYSTEM—Six volt system; 115 ampere hour battery; separate unit starter and generator.

IGNITION SYSTEM—Coil and Distributor.

WIRING—Fuses provided for all circuits, with two spare fuses in clips; fuse box conveniently located under hood.

CLUTCH—Multiple disc, dry plate clutch.

TRANSMISSION—Three speeds forward, one reverse; unit with power plant. Special four-speed transmission on order.

STEERING—Cam and lever type of steering gear, especially designed for balloon tires; 18" steering wheel, with steering post fastened to adjustable bracket so that drivers of different stature can operate the car in comfort.

FRONT AXLE—Special design; large I-beam section of carefully heat-treated alloy steel.

REAR AXLE—Semi-floating type of special heat-treated alloy steel; spiral bevel ring and pinion gears; roller bearings throughout.

WHEELS—Artillery type standard; steel felloe bands; tapered roller bearings in front and rear wheels. Wire wheels optional.

TIRES—32" x 6.50" balloon cord.

BRAKES—4-wheel hydraulic brakes operated by foot pedal; 16" brake drums. Emergency hand brake operating on propellor shaft directly in rear of transmission.

SPRINGS—Made of special chrome vanadium steel. Front springs 2" wide, 40" long; rear springs $2\frac{1}{2}$ " wide, 60" long. Hung on special rubber impregnated fabric shackles. These spring shackles never rattle, nor squeak, and require no lubrication.

FRAME—Pressed steel channel 8" deep; 6 rigid cross members give frame torsional stiffness and insure freedom from body weave.

GASOLINE SUPPLY—Auto pulse system. 22-gallon tank with 2-gallon reserve supply, located at rear of frame.

WHEELBASE—142 inches.

TREAD—58 inches.

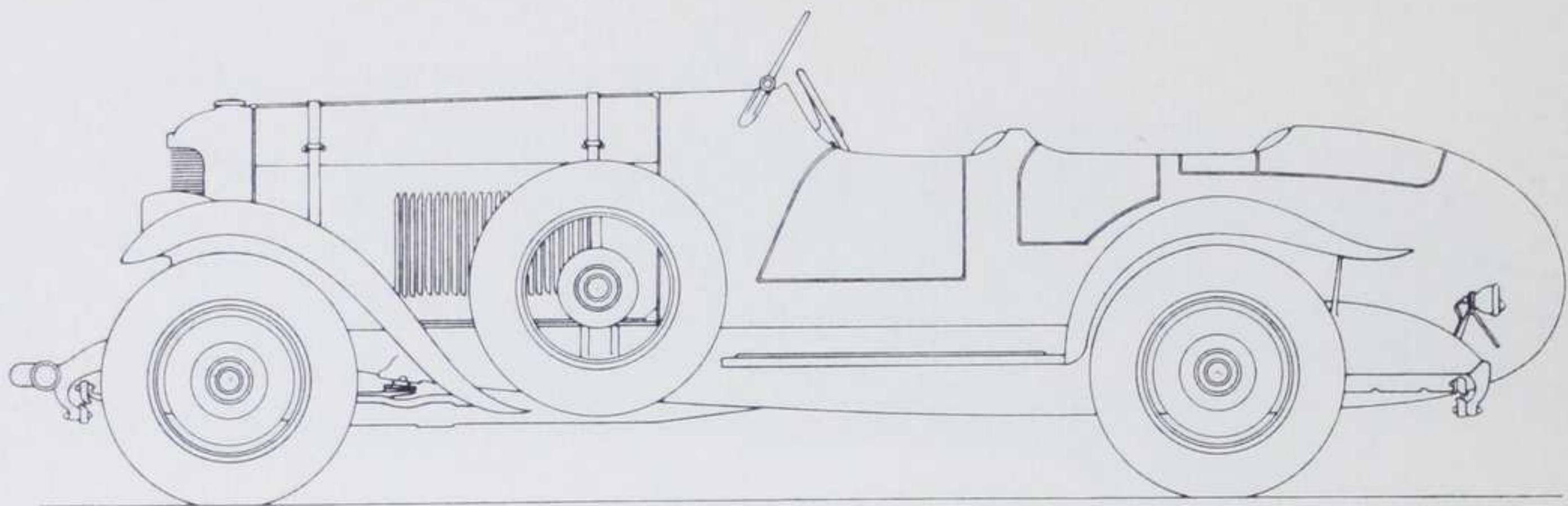
EQUIPMENT—Shock absorbers, extra tire and tube; heavy type front and rear bumpers, both having specially designed frame attachments; full tool equipment; electric vibrator horn; automatic windshield wiper; cigar lighter; full set of instruments including 8-day clock, mounted on instrument board; rear view mirror.

BODIES—Hand made aluminum body shell; finest grade upholstering materials and hardware; hand buffed leathers or imported cloths; duco finish. Careful attention given to orders for special bodies.

Prices on Application

DU PONT MOTORS, INC., Wilmington, Delaware

DU PONT



SPEEDSTER — LEMANS MODEL

DUPONT MOTORS INC.

DU PONT

WILMINGTON DEL.

MAGNETOS

RES
ES

