



MOTOR
CARS

THIS catalog illustrates a number of the models built by Du Pont. Constantly changed color schemes and upholstery materials insure individuality in all cases.

LIST OF REGULAR MODELS

SEDAN, Five or Seven Passenger

BERLINE, Five or Seven Passenger

TOWN CAR, Five or Seven Passenger

CLUB SEDAN, Five Passenger

COUPE, Two or Four Passenger

CONVERTIBLE SEDAN, Five Passenger

CONVERTIBLE VICTORIA, Four Passenger

PHAETON, Five or Seven Passenger

ROADSTER, Two Passenger—with Rumble Seat

SPEEDSTER, Two or Four Passenger

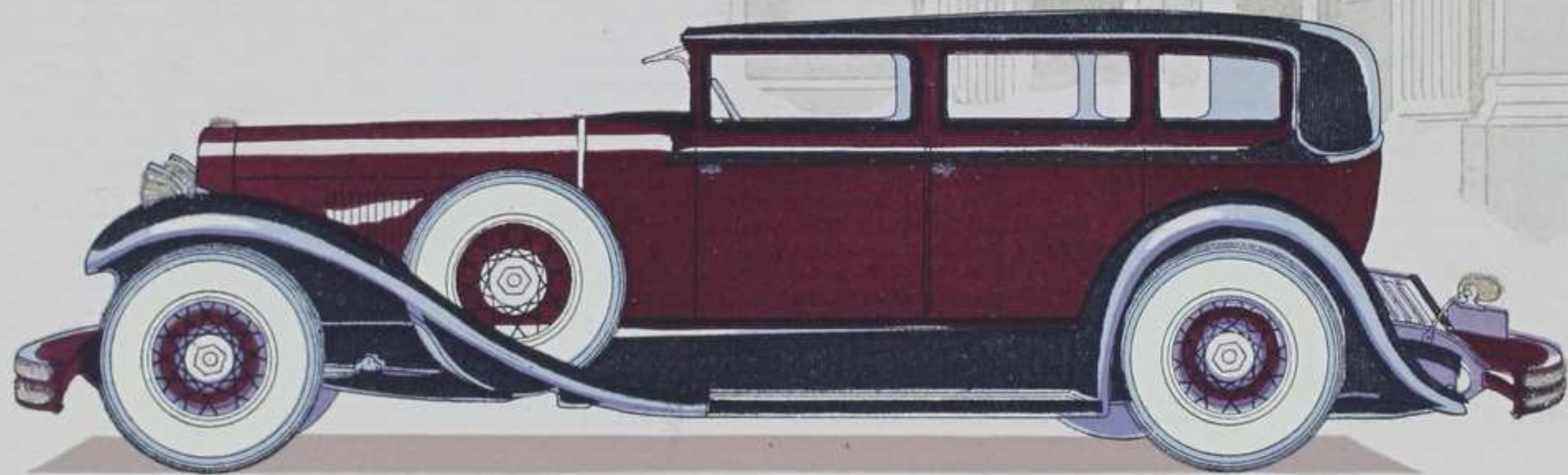
CONVERTIBLE COUPE, Two Passenger — with Rumble Seat

We are ready at all times to create special coachwork of any description, giving careful attention to your requirements.

PRICES ON APPLICATION

DUPONT MOTORS, INC.

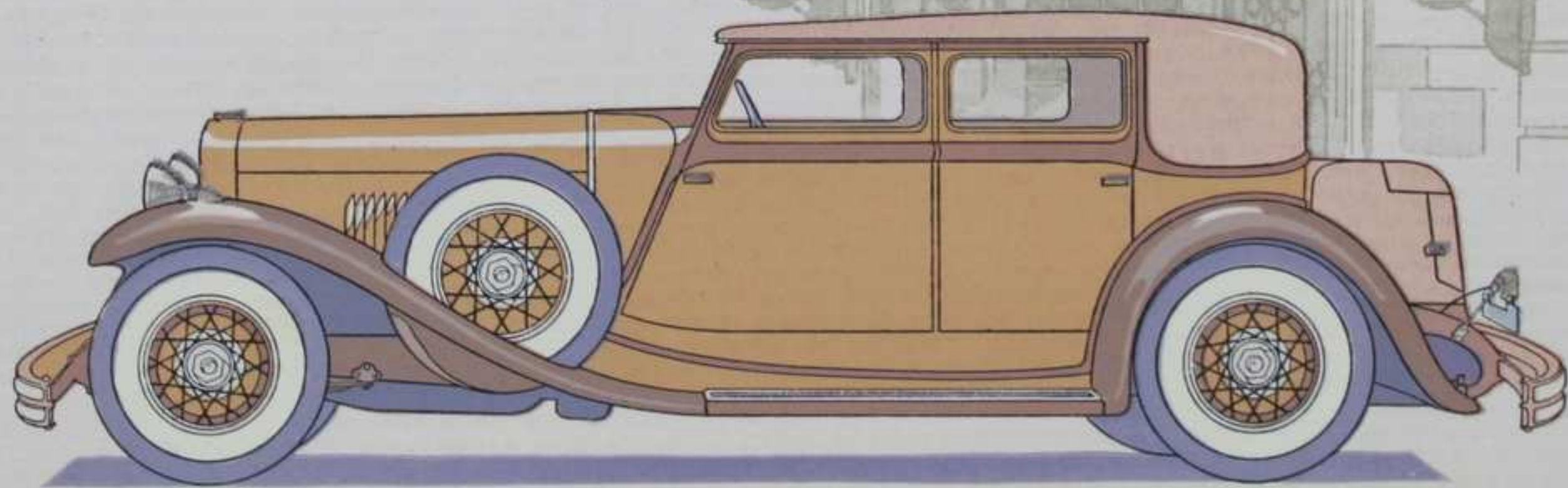
WILMINGTON, DELAWARE



DUPONT MOTORS, Inc.

SEDAN

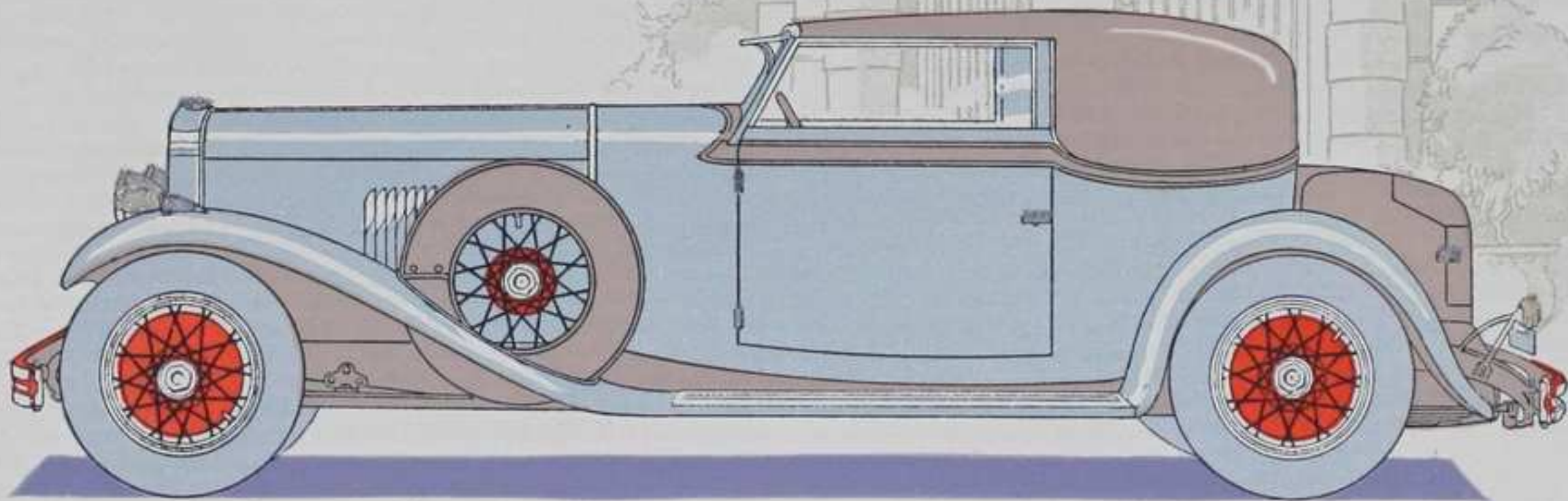
WILMINGTON, DEL.



DUPONT MOTORS, INC.

CLUB SEDAN

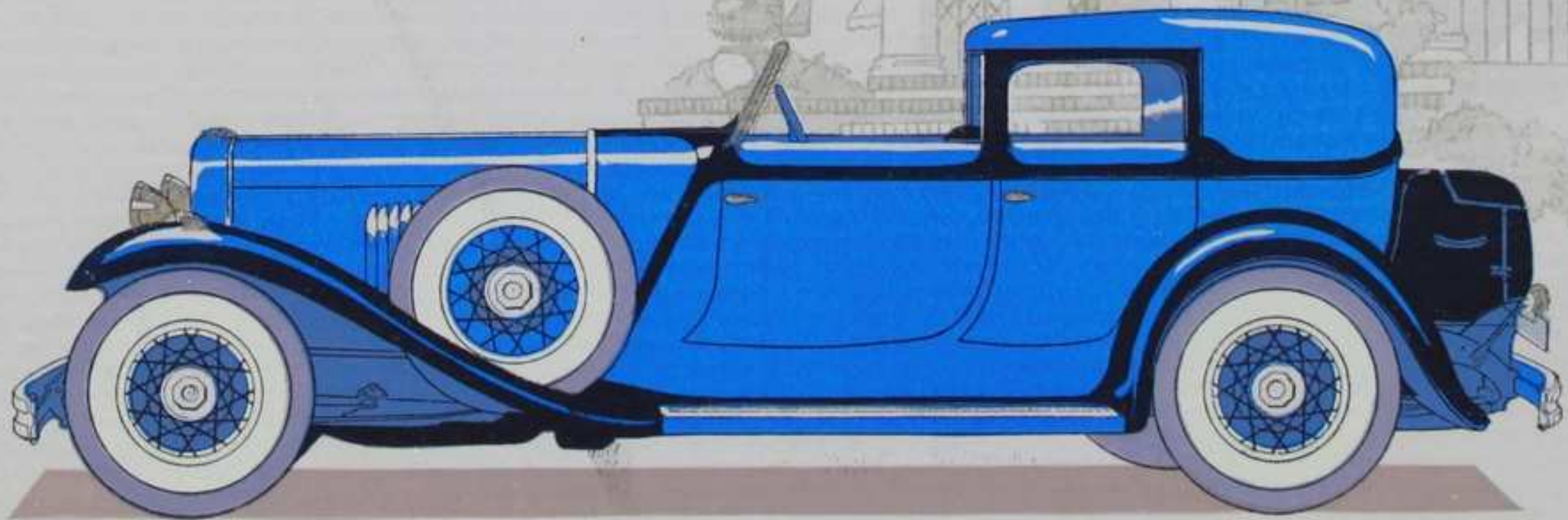
WILMINGTON DEL.



DUPONT MOTORS, Inc.

CONVERTIBLE VICTORIA

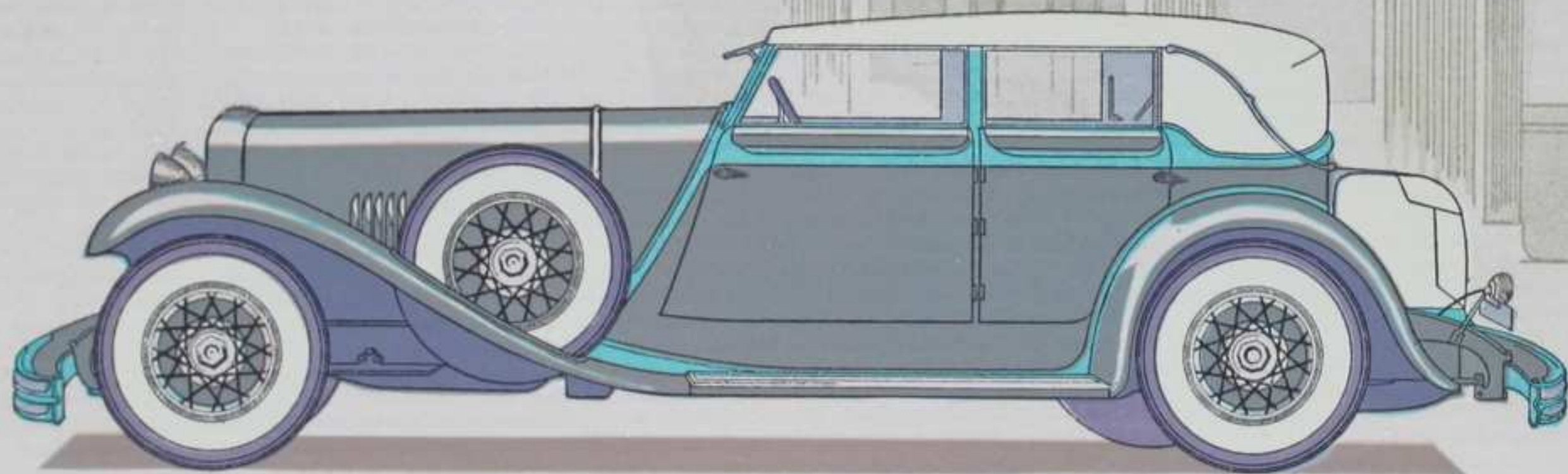
WILMINGTON, DEL.



DUPONT MOTORS, Inc.

TOWN CAR

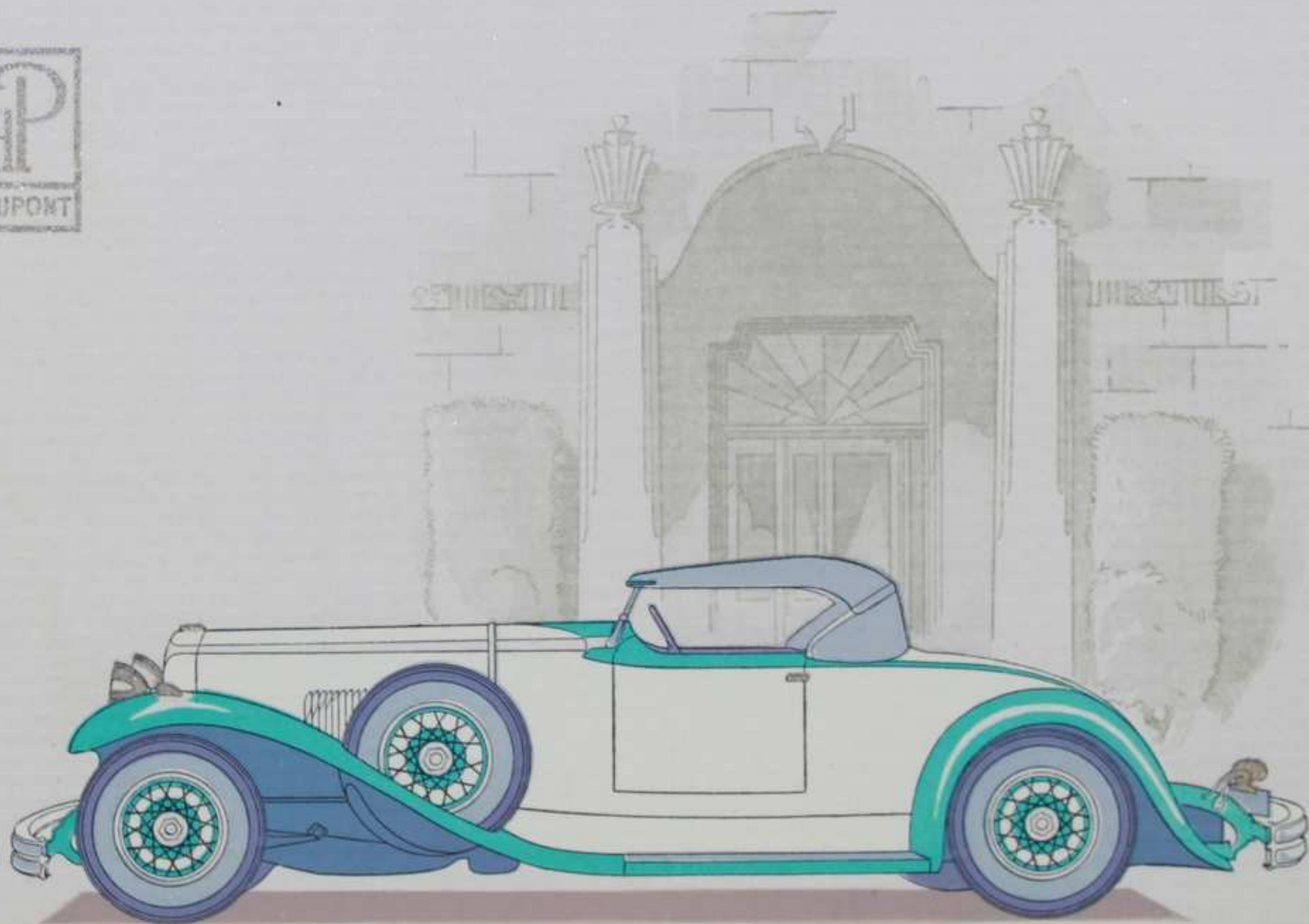
WILMINGTON DEL



DUPONT MOTORS INC.

CONVERTIBLE SEDAN

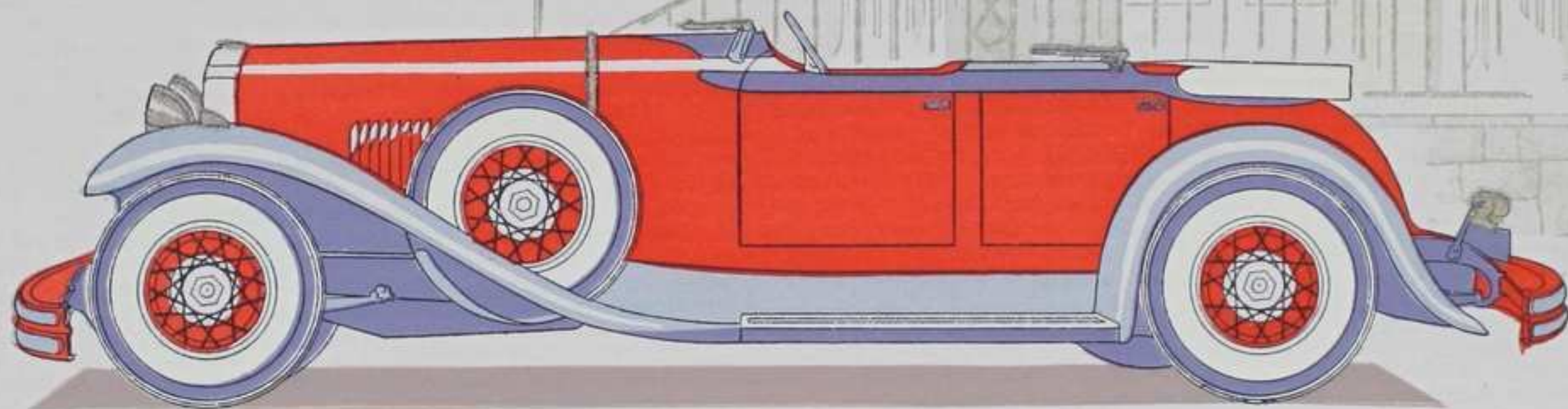
WILMINGTON, DEL.



DUPONT MOTORS, INC.

ROADSTER

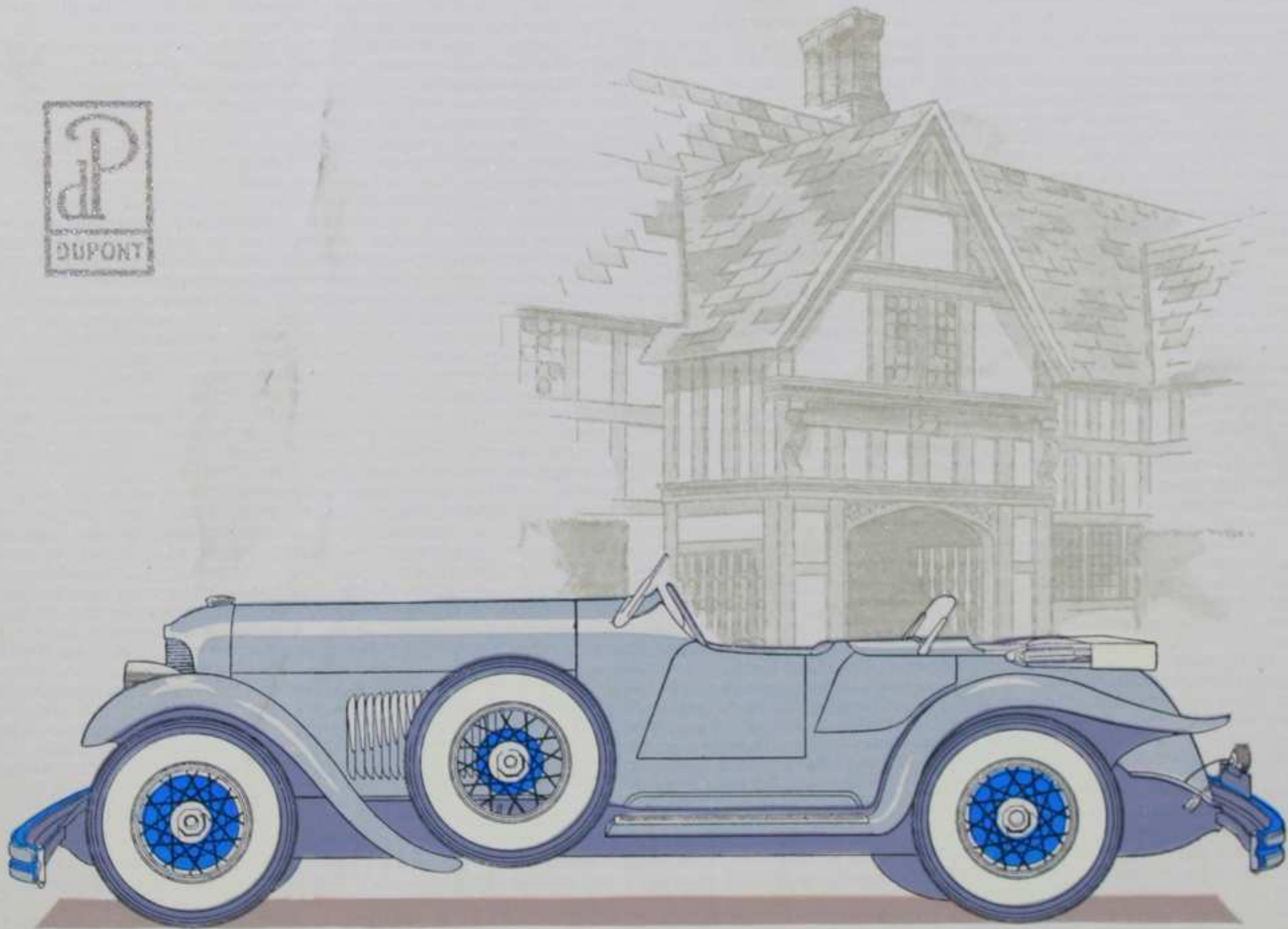
WILMINGTON, DEL.



DUPONT MOTORS, Inc.

PHAETON

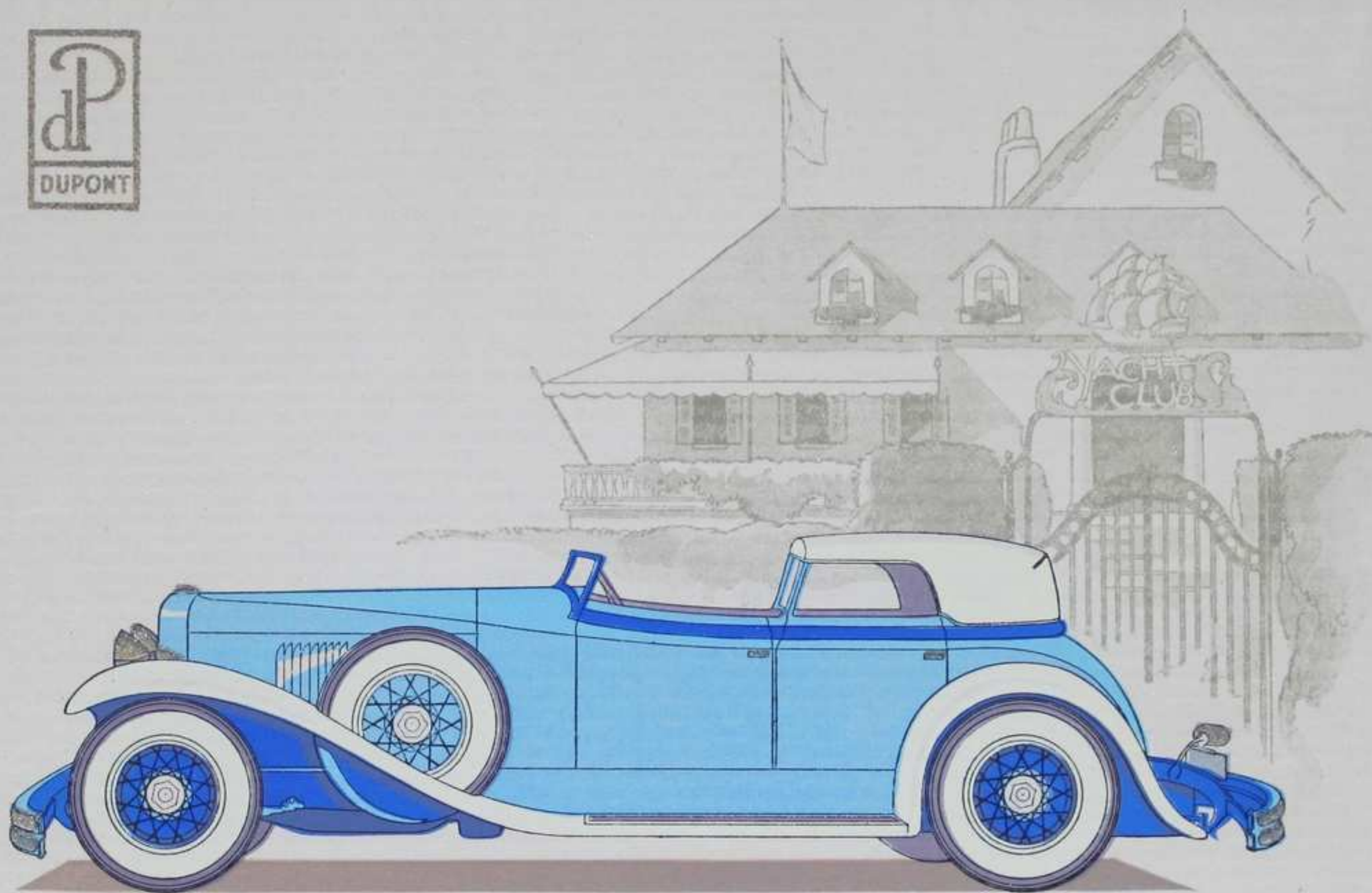
WILMINGTON DEL



DUPONT MOTORS, Inc.

SPEEDSTER

WILMINGTON, DEL.



DUPONT MOTORS, INC.

TRANSFORMABLE

WILMINGTON, DEL.

Specifications—Model G

Engine

- TYPE—L Head eight cylinders in line, cast en bloc; detachable head.
PISTON DISPLACEMENT—322 cubic inches; bore $3\frac{3}{8}$ " ; stroke $4\frac{1}{2}$ " ; S. A. E. rating, 36.45 H. P.
VALVES—Special heat-resisting alloy.
PISTONS—Light weight aluminum alloy.
CONNECTING RODS—Drop-forged steel, heat-treated.
CRANKSHAFT—Drop-forged, heat-treated steel crankshaft, supported by five large bearings.
CAMSHAFT—Seven bearings.
CAMSHAFT DRIVE—By link-belt chain. Automatic idler adjustment.
MOTOR OILING SYSTEM—Force feed pressure by gear pump.
MOTOR COOLING SYSTEM—Centrifugal pump; large cellular type radiator.
CARBURETION—Dual carburetion with hot air control.
ELECTRIC SYSTEM—Six volt system; 130 ampere hour battery; separate unit starter and generator.
IGNITION SYSTEM—Dual coils and distributor.

Chassis

- WIRING—Fuses provided for all circuits; with four spare fuses in clips; fuse boxes conveniently located under hood.
CLUTCH—Multiple disc, dry plate type.
TRANSMISSION—Four speeds forward, one reverse; unit with power plant.
STEERING GEAR—Irreversible type, 18" steering wheel, with steering post fastened to adjustable bracket.

- FRONT AXLE—Special design; large I-beam section of carefully heat-treated alloy steel. Tapered roller bearings.
REAR AXLE—Semi-floating type of special heat-treated alloy steel; tapered roller bearings.
WHEELS—Six wire wheels standard.
TIRES—32" x 6.50". Special balloon cord.
BRAKES—4-wheel hydraulic brakes operated by foot pedal; 16" brake drums. Emergency hand brake operating on propeller shaft directly in rear of transmission.
SPRINGS—Made of special alloy steel. Front springs 2" wide, 40" long; rear springs $2\frac{1}{2}$ " wide, 60" long.
FRAME—Pressed steel channel 8" deep; 6 rigid cross members.
GASOLINE SUPPLY—Fuel pump system. 22-gallon tank with 2-gallon reserve supply, located at rear of frame.
WHEELBASES—125" to 150" according to Body requirements.
TREAD—58½ inches.

Body and Equipment

- CONSTRUCTION—Hardwood frame, hand hammered aluminum panels, special cast aluminum dash and tool compartment. Finest grade upholstery materials and hardware, hand buffed leathers, safety glass throughout.
DESIGN—Executed to customer's requirements when desired.
FINISH—Duco, color as specified; all bright exterior parts chromium plated.
EQUIPMENT—Two-way hydraulic shock absorbers, extra tires and tubes; heavy type front and rear bumpers; full tool equipment; electric vibrator horn; automatic windshield wiper; cigar lighter; full set of instruments, including 8-day clock, mounted on instrument board; rear view mirror.

Prices on Application

du Pont Motors, Inc.

Wilmington, Delaware