



MOTOR
CARS

1922

ACE
Motor Carriages



ACE MOTOR CAR CO.
441-43 JACKSON ST. PHONE BDWY. 998
MILWAUKEE, WIS.

*Designed and Produced
by the*

APEX MOTOR CORPORATION
YPSILANTI, MICH.

Introduction

NEVER in the history of the automotive industry has it been so necessary to use such great care in the selection of an automobile. Judgment—based not on claims but on thorough investigation of actual values, mechanical excellence and dependability, is the only insurance of entire satisfaction.

The ACE hand-built motor carriage is the result of years of experience in automobile building, coupled with the policy which may be summed up in the single word—Quality.

To produce automobiles of highest quality, automobiles that are 100% efficient, yet distinctive, individual and graceful in appearance, has been the aim of the Apex Motor Corporation since its organization.

The design of each ACE model embodies individuality, comfort and superior performance, a combination derived from engineering genius and practical experience gained from extensive experiments, research work, and years spent in the manufacture of automobiles. Accurate workmanship is a most essential factor in the performance of any automobile. ACE motor carriages are hand-built by skilled and experienced workmen who have the knowledge acquired in producing and helping to produce for many years, various makes of automobiles and automobile parts.

There is a certain distinctiveness, an individuality in each ACE model which characterizes it as a car of personality. It is different, without sacrificing the conservative. Out of the ordinary in appearance, with exceptional riding qualities and all around serviceability, the ACE meets the most exacting demands.



THE ACE "PUP" FOUR TOURING

Specifications

MOTOR—Ace Super-Power, four cylinder, detachable head. 35-40 H. P.; Bore 3½ inches, Stroke 5 inches.

CARBURETION—Scoe carburetor, vacuum fed. Hot intake vaporization.

STARTING AND LIGHTING—Auto Lite, two unit, 6 volt system.

IGNITION—Atwater-Kent improved. Type CC.

COOLING—Cellular type radiator and thermo-syphon system.

LUBRICATION—Pressure feed to main bearings and splash to cylinders. Oil pressure gauge on dash.

CLUTCH—Borg & Beck 10-inch.

TRANSMISSION—Warner gear, Model T, 64A, three forward speeds and reverse. Selective sliding gears. Very quiet in action.

AXLES—Salisbury; Rear axle ¾ floating, spiral bevel gears, Timken Bearings throughout. Front axle, drop forged I-beam section, Timken Bearings; turning radius, 18 ft.

SPRINGS—Front, semi-elliptical; rear, cantilever.

TIRES—32x4 Goodyear Cord, all weather tread.

BRAKES—Emergency internal and Service external brakes direct on wheels. Raybestos lining. 14-inch Drums. All brakes equalized.

WHEEL BASE—114 inches; Tread, 56 inches.

STEERING—Left side drive. Center control. 18-inch solid walnut steering wheel. Worm and full gear type, three adjustments.

BODIES—Five-passenger touring model and two-passenger roadster. Heavy body frames, solid maple; genuine Spanish leather upholstery in various colors.

COLORS—Various, as ordered.

TOP—One-man type with Gypsy style rear curtain; Never-leak material. Curtains open with doors. Bevel plate glass back light.

EQUIPMENT—Windshield rain-vision ventilating type. Stewart speedometer; two electric headlights with dimming device, electric tail and dash light; Stewart horn, button at top of steering column; Boyce moto-meter; oil gauge; ammeter; Briggs & Stratton ignition switch; 15-gallon gasoline tank; Exide battery; and full set of tools.

The Ace "Pup" Four Touring

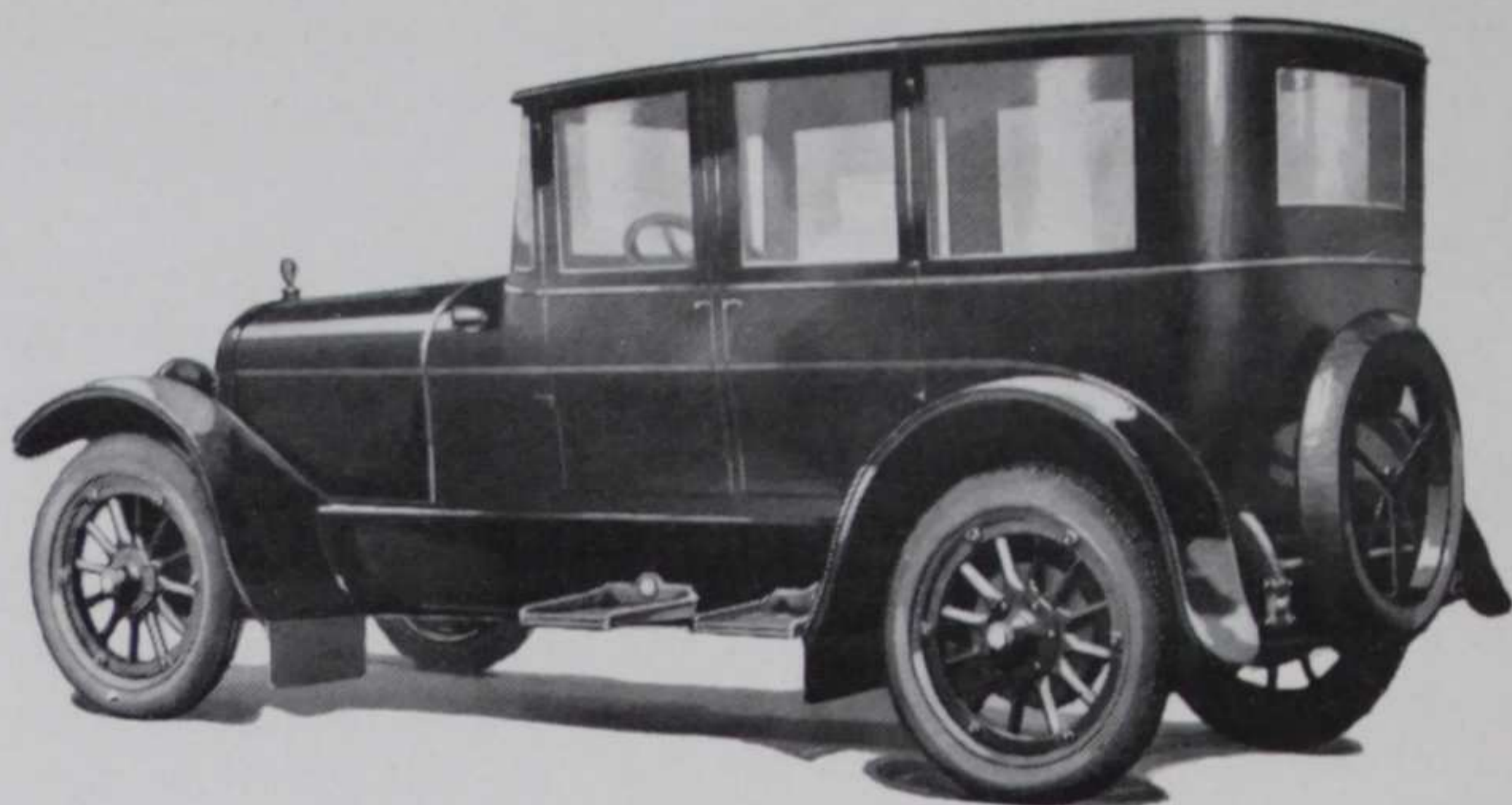
THE ACE "PUP" FOUR, named after the famous Sopwith "PUP" Aeroplanes which served so efficiently during the World War, answers the ever increasing demand for a high grade, powerful, easy riding, speedy, distinctive appearing, low priced automobile.

It is custom-built, of the best of material, with standard units of superior grade; it has plenty of power and speed, with the riding qualities of the highest priced cars. It embodies the features and the built-in appointments obtainable only in custom-built automobiles.

It is equipped with snug fitting top and winter curtains, water-tight windshield; an extra tire carrier is mounted on the rear cross member. It is a car for all weather comfort and transportation, always dependable winter or summer.

The ACE "PUP" FOUR, distinctive and graceful in appearance, reflects personality and refinement. Both Roadster and Touring bodies are painted in rich colors to suit the individual purchaser. There is a choice of various colors in genuine Spanish leathers for the upholstery which is trimmed in the new attractive "arm roll" rather than the conventional pleated style.

Increased production, improved manufacturing facilities, together with efficient and experienced workmanship, make possible the sale of this high grade little automobile at a remarkably low figure heretofore impossible.



THE ACE FOUR CYLINDER SEDAN

Specifications

MOTOR—Ace Super-Power, four cylinder, detachable head. 35-40 H. P.; Bore $3\frac{1}{2}$ inches, Stroke 5 inches.

CARBURETION—Scoe carburetor, vacuum fed. Hot intake vaporization

STARTING AND LIGHTING—Auto Lite, two unit, 6 volt system.

IGNITION—Atwater-Kent improved, Type CC.

COOLING—Cellular type radiator and thermo-syphon system.

LUBRICATION—Pressure feed to main bearings and splash to cylinders. Oil pressure gauge on dash.

CLUTCH—Borg & Beck 10-inch.

TRANSMISSION—Warner gear, Model T, 64A, three forward speeds and reverse. Selective sliding gears. Very quiet in action.

AXLES—Salisbury; Rear axle $\frac{3}{4}$ floating, spiral bevel gears, Timken Bearings throughout. Front axle, drop forged I-beam section, Timken Bearings; turning radius 18 ft.

SPRINGS—Front, semi-elliptical; rear, cantilever.

TIRES—32x4 Goodyear Cord, all weather tread.

BRAKES—Emergency internal and Service external brakes direct on wheels. Raybestos lining. 14-inch Drums. All brakes equalized.

WHEEL BASE—114 inches; Tread, 56 inches.

STEERING—Left side drive. Center control. 18-inch solid walnut steering wheel. Worm and full gear type, three adjustments.

BODIES—Five-passenger sedan. Aluminum body. Heavy body frames, solid maple; upholstered and trimmed with best quality Bedford cord cloth of various colors.

EQUIPMENT—Three-piece windshield, rain-vision ventilating type; cowl and tonneau ventilators; Perfection heater controlled from dash; Dome light; Cigarette lighters; Vanity cases, Clock; Stewart speedometer; two electric headlights with dimming device, electric tail and dash light; Stewart horn, button at top of steering column; Boyce motometer; oil gauge; ammeter; Briggs & Stratton ignition switch; 15-gallon gasoline tank; Exide battery; and full set of tools.

The Ace 'Four' Sedan

THE new ACE four cylinder sedan brings to the buyer of the moderate priced automobile an enclosed car with all the points of refinement, the comfort, the superior riding qualities and all around serviceability heretofore obtainable only at high cost.

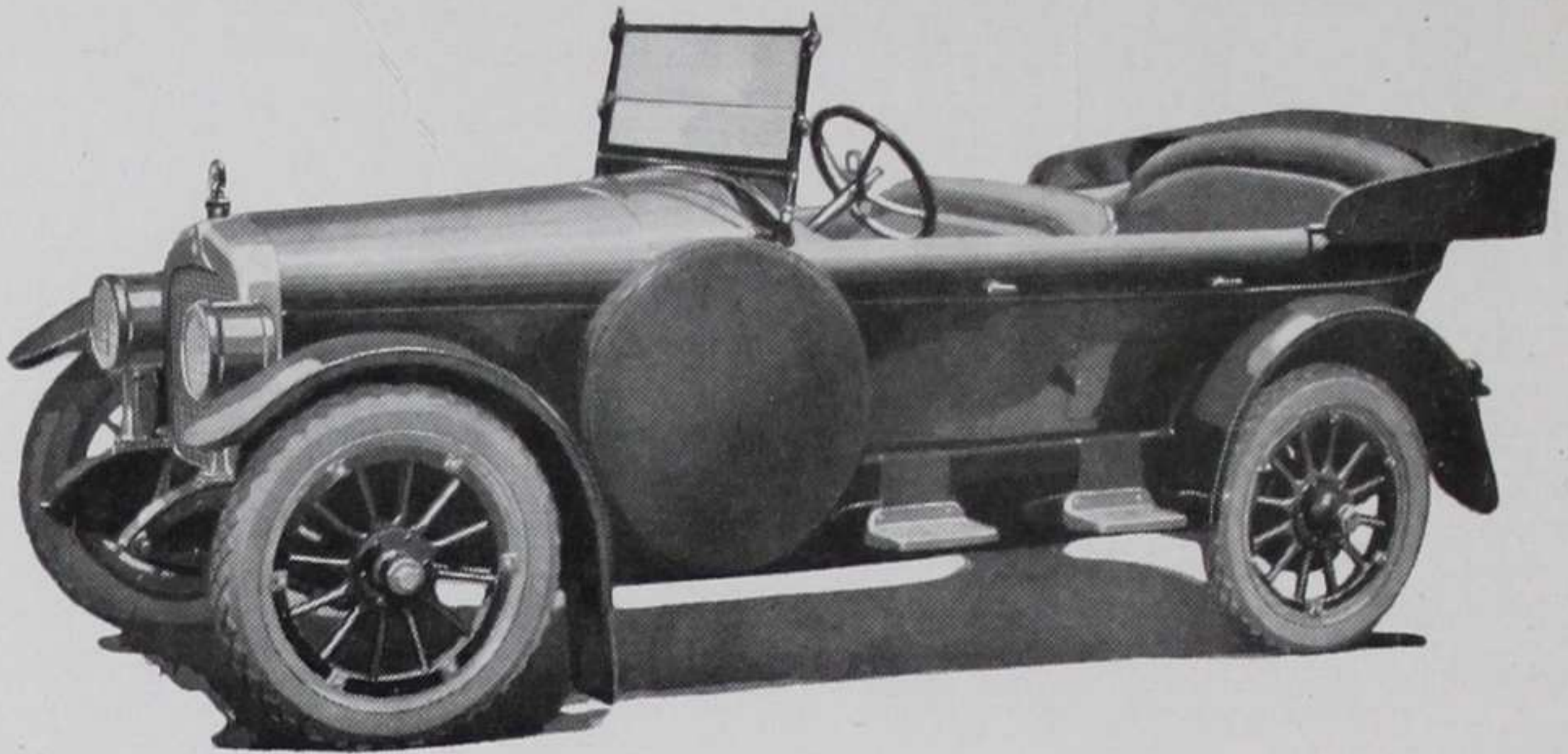
Beautiful, with graceful curving lines, this five passenger enclosed model expresses comfort, smartness and that distinctive individuality that characterizes all ACE models.

For those who seek the comfort, elegance and dignity of an enclosed car, for those who demand a light, economical, yet powerful and dependable car at a moderate price, this model answers every requirement.

The body is of aluminum with four doors which are broad and open wide. It is finished in striking colors and color combinations.

The interior fittings are exquisite. The seats are deeply cushioned and unusually comfortable, upholstered in best quality Bedford cord cloth of various colors. There is ample room for five passengers, yet there is a coziness seldom found in other sedans.

Powered with the ACE Victory four cylinder, $3\frac{1}{2} \times 5$ motor, this model has plenty of power for city or cross-country driving. It accelerates so quickly, it responds so readily, slips into its place at the curb or passes through the crowded streets with such an ease of operation that it is ideal for those who justly hesitate to sit at the wheel of a heavy car. It is controlled so easily that its driver has that constant feeling of confidence which makes driving enjoyable under all conditions.



THE ACE "SCOUT" SIX TOURING

Specifications

MOTOR—Herschell-Spillman, 6 cylinder, detachable head. 30-60 H. P.; Bore $3\frac{1}{4}$ inches, Stroke 5 inches.

CARBURETION—Stromberg carburetor, vacuum fed. Hot intake vaporization.

STARTING AND LIGHTING—Two unit, 6 volt system.

IGNITION—Atwater-Kent improved. Type CC.

COOLING—Cellular type radiator and centrifugal pump.

LUBRICATION—Pressure feed to main bearings and splash to cylinders. Oil pressure gauge on dash.

CLUTCH—Warner gear, 13 plate Dry Disc, Raybestos lining.

TRANSMISSION—Warner gear, Model T 60, three forward speeds and reverse. Selective sliding gears. Very quiet in action.

AXLES—Salisbury; Rear axle full floating, spiral bevel gears. Timken Bearings throughout. Front axle, drop forged I-beam section, Timken Bearings; turning radius 18 feet.

SPRINGS—Front, semi-elliptical; rear, cantilever.

TIRES—32x4 Goodyear Cord, all weather tread.

BRAKES—Emergency internal and Service

external brakes direct on wheels. Raybestos lining. 14-inch Drums. All brakes equalized.

WHEEL BASE—117 inches; Tread, 56 inches.

STEERING—Left side drive. Center control. 18-inch solid walnut steering wheel. Worm and full gear type, three adjustments.

BODIES—Five-passenger touring model and two-passenger roadster. Body frames 10 inches wide, solid maple; genuine Spanish leather upholstery in various colors.

COLORS—Various, as ordered.

TOP—One-man type with Gypsy style rear curtain; Never-leak material. Curtains open with doors. Bevel plate glass back light.

EQUIPMENT—Windshield rain-vision ventilating type. Stewart speedometer; two electric headlights with dimming device. Electric tail, dash, tonneau and two side bullet lights; Stewart horn, button at top of steering column; Boyce motometer; oil gauge; ammeter; Briggs & Stratton ignition switch; 18-gallon gasoline tank; Exide battery; cigar lighter; trouble lamp and socket; trunk rack; two extra rims and full set of tools.

The Ace "Scout" Six

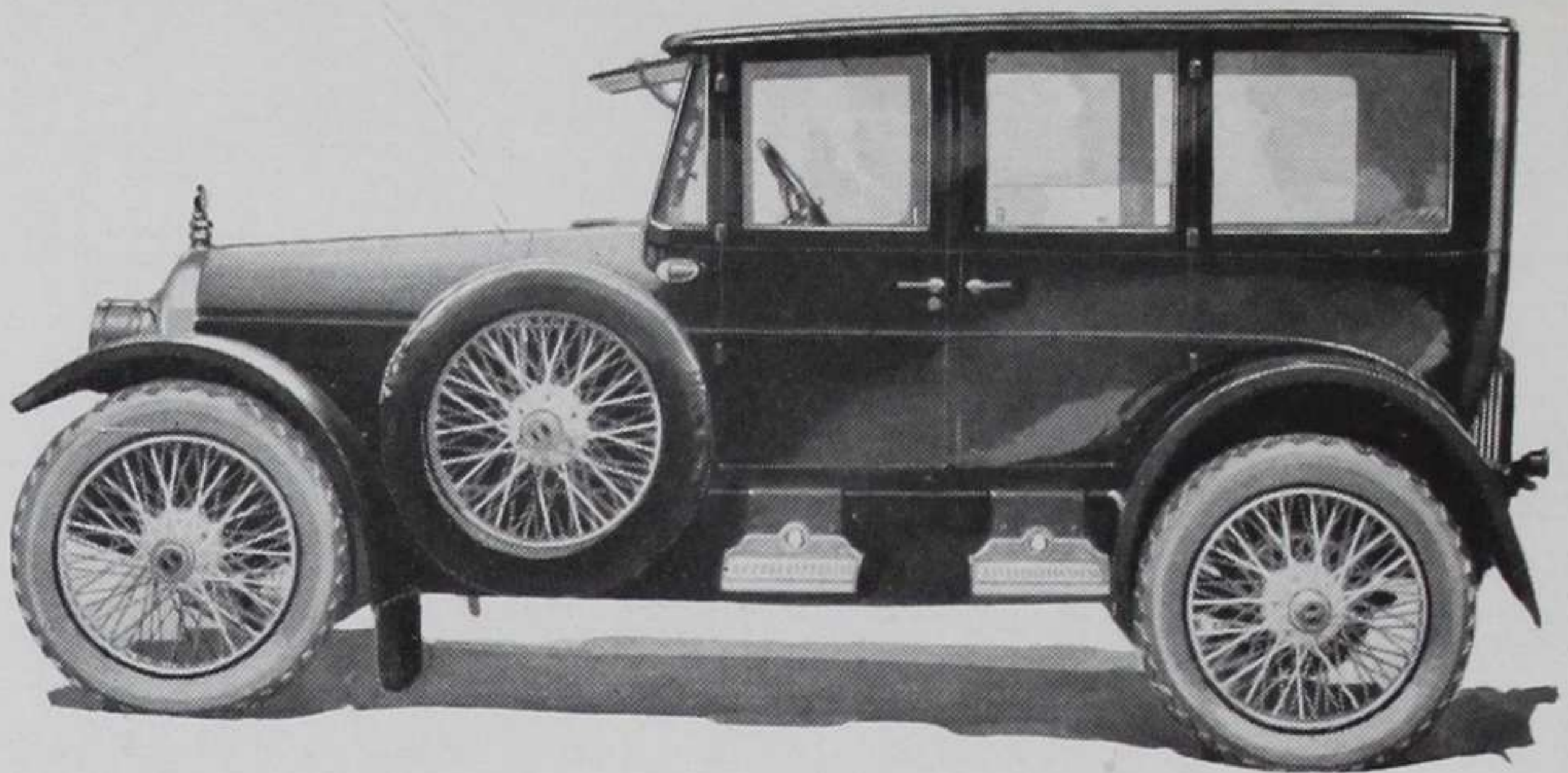
THERE is that air of smartness and originality in every line of this model that is characteristic of all ACE motor carriages. There is a portrayal of true grace and beauty in every curve. It offers a pleasing change in appearance from the conventional type of automobile body design.

Powered by the Herschell-Spillman $3\frac{1}{4}$ x 5 six cylinder motor, this model is unusually sturdy and well balanced with plenty of power and speed. All units entering into the construction of this ACE "SCOUT" model have been thoroughly proven by actual use in the hands of the public and by extensive tests under all conditions. An unusual medium priced car, distinctive in appearance but constructed of standard units, the best that money, engineering genius and skill can produce.

This model answers every requisite for a moderately priced six cylinder five passenger automobile, that will stand up and perform with one hundred per cent efficiency every day in the year. It is easily handled, quick in acceleration and can be held at high speed hour after hour in cross-country driving.

A car for business and pleasure. It is economical in operation, so easy riding and so excellent mechanically that it compares most favorably with cars of much greater cost and heavier units.

Hand-built and finished in colors to meet the wishes of the individual purchaser, upholstered in genuine Spanish leather of various colors, this model carries two extra tires, one mounted on each side, with an attractive and serviceable trunk rack on the rear. This ACE "SCOUT" model has the appearance of the highest priced cars, stands the most severe and continual use, yet is offered at a moderate price. A car for the man of moderate means who wants something different, a car with individuality expressed in every line.



THE ACE SIX CYLINDER SEDAN

Specifications

- MOTOR**—Herschell-Spillman, 6 cylinder, detachable head. 35-70 H. P.; Bore 3½ inches, Stroke 5 inches.
- CARBURETION**—Stromberg carburetor, vacuum fed. Hot intake vaporization.
- STARTING AND LIGHTING**—Two unit, 6 volt system.
- IGNITION**—Atwater-Kent improved. Type CC.
- COOLING**—Cellular type radiator and centrifugal pump.
- LUBRICATION**—Pressure feed to main bearings and splash to cylinders. Oil pressure gauge on dash.
- CLUTCH**—Warner gear, 13 plate Dry Disc, Raybestos lining.
- TRANSMISSION**—Warner gear, Model T 60, three forward speeds and reverse. Selective sliding gears. Very quiet in action.
- AXLES**—Salisbury; Rear axle full floating, spiral bevel gears. Timken Bearings throughout. Front axle, drop forged I-beam section, Timken Bearings; turning radius 18 feet.
- SPRINGS**—Front, semi-elliptical; rear, cantilever.
- TIRES**—32x4 Goodyear Cord, all weather tread.
- BRAKES**—Emergency internal and Service external brakes direct on wheels. Raybestos lining. 14-inch Drums. All brakes equalized.
- WHEEL BASE**—117 inches; Tread, 56 inches.
- STEERING**—Left side drive. Center control. 18-inch solid walnut steering wheel. Worm and full gear type, three adjustments.
- BODIES**—Four and five-passenger sedan models, upholstered in exquisite tapestry or silk velour trimmed with imported broadcloths. Body frames 10 inches wide, solid maple.
- COLORS**—To suit the wishes of the individual purchaser.
- EQUIPMENT**—Three-piece rain-vision ventilating type windshield; Cowl and tonneau ventilators; Perfection heater controlled from dash. Dome and corner lights; vanity cases; cigarette lighter; eight day clock; Stewart speedometer; two electric headlights with dimming device. Electric tail, dash, tonneau and two side bullet lights; Stewart horn, button at top of steering column; Boyce moto-meter; oil gauge; ammeter; Briggs & Stratton ignition switch; 18-gallon gasoline tank; Exide battery; trunk rack; trouble lamp and socket; two extra rims and full set of tools.

The Ace Six Cylinder Sedan

EXCEPTIONALLY roomy and comfortable, with wide and deeply upholstered seats, the ACE six cylinder sedan is complete to the most minute detail.

The body is of aluminum. Its construction is of the best. It is built to last. Its frame is of close grained hardwood, so designed and constructed that it withstands the most severe twisting strains, never developing the rattles and squeaks so common in most closed cars.

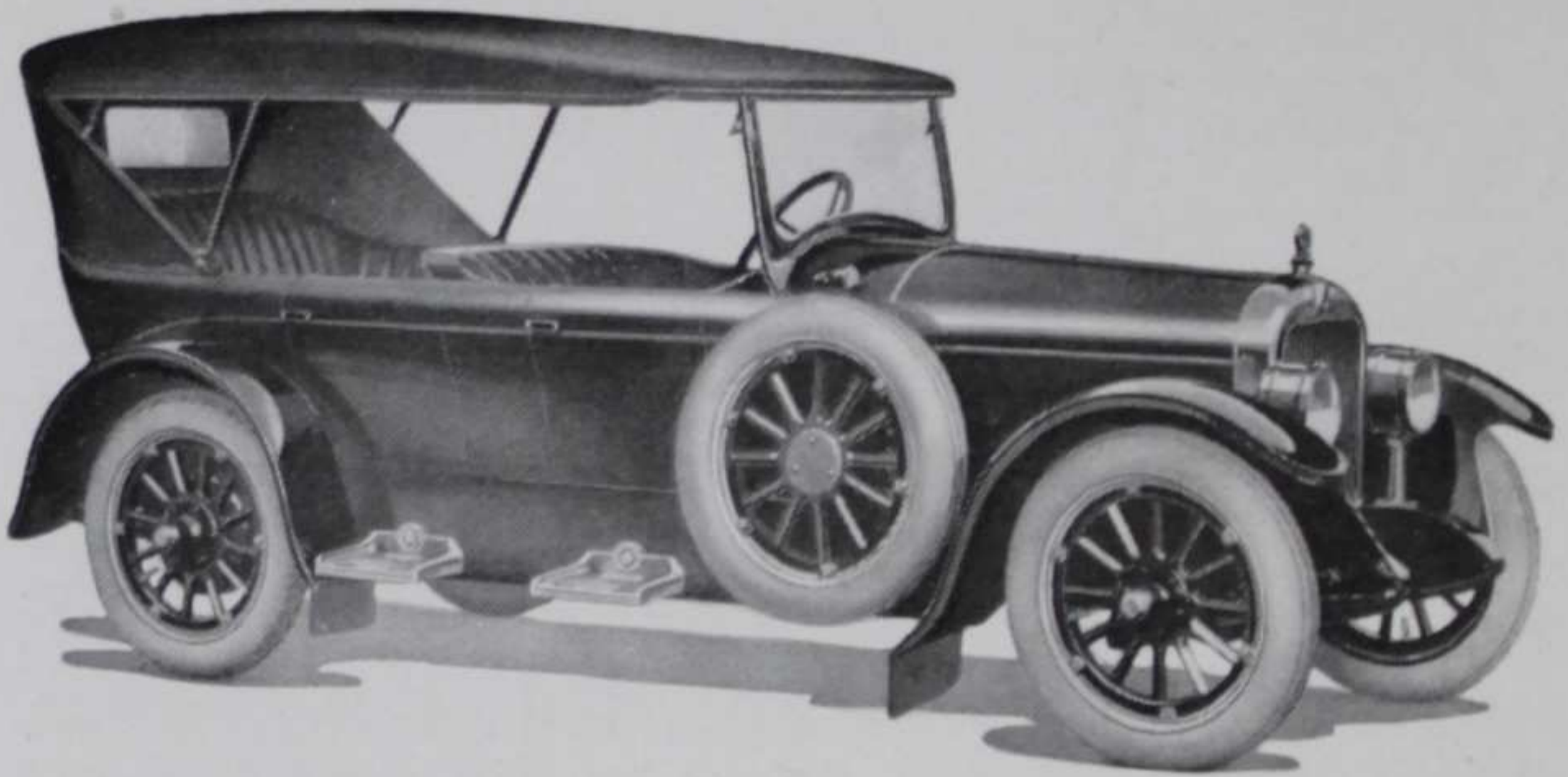
The interior fittings are silver plated, delicately chased. From vanity cases, cigarette lighters, and ash tray to the convenient pockets in the doors, each and every appointment expresses refinement and comfort.

This six cylinder ACE sedan is built in either four passenger sport model or the conventional five passenger type. The former is equipped with four large and comfortable overstuffed arm chairs instead of the usual seating arrangement, making this model a car of unusual distinction and elegance. There is a charming individuality in these cars, which is emphasized by the exquisite tapestry and silk velour upholstery of the seats and the imported broadcloth which covers the rest of the interior.

Dome and corner lights, also step lights which are automatically operated by the opening and shutting of the doors, cowl and tonneau ventilators, perfection heater and three-piece, rain-vision, ventilating type windshield are a few of the features adding materially to the completeness of this unusual car and giving the user all weather comfort.

With graceful body lines, painted in rich colors to suit the purchaser, the exterior presents an appearance of unquestionable excellence.

Powered by the new six cylinder Herschell-Spillman model Ninety, $3\frac{1}{2}$ x 5 motor, this ACE six sedan is handled most easily. There is always that quick pick-up, that rapid acceleration and smooth flow of power at low or high speeds which gives the driver that assurance of getting through crowded traffic with ease and safety. The high mileage obtained is also most noticeable in the performance of this model.



THE ACE "COMBAT" TOURING

Specifications

MOTOR—Special Continental six cylinder, Model TA, $3\frac{5}{8} \times 5\frac{1}{2}$, 35.80 H. P.

CARBURETION—Stromberg VC, $1\frac{1}{2}$ -inch hot spot manifold and hot air device.

STARTING AND LIGHTING—Two unit, six volt.

IGNITION—Atwater-Kent, Type CC.

COOLING—Cellular radiator and centrifugal pump.

LUBRICATION—Full force feed throughout. Pressure gauge on dash.

CLUTCH—Dry plate. Thirteen plate Warner.

TRANSMISSION—Fuller TU. Three speeds and reverse. Selective sliding gear, quiet and easy to shift.

AXLES—Salisbury front and rear. Three-quarters floating, rear. Timken bearings. Front, drop forged I-beam section. Timken bearings.

SPRINGS—Semi-elliptic, front and rear. Very long and flexible. Silicon manganese alloy, assuring easy riding and freedom from breakage.

TIRES— $33 \times 4\frac{1}{2}$ Goodyear Cord, all weather tread.

BRAKES—All on wheels. Internal expanding emergency, external contracting service. $16 \times 2\frac{1}{2}$ -inch drums. Raybestos facings.

WHEEL BASE—120 inches. Turning radius eighteen feet.

STEERING—Left side, worm and split nut with an eighteen-inch walnut wheel. Two adjustments.

BODIES—Two-passenger roadster and five-passenger touring, painted to suit and trimmed in Spanish leathers in various colors. All oak and maple frames, sills, and uprights.

TOP—One man and Victoria. Dupont Pon-top, fabric and two fabrics, khaki and grey. Three-ply rubber interlined storm tight curtains. All curtains open with doors. Victoria type has extension to reach windshield covering driver and curtaining entire car.

EQUIPMENT—Eight day clock, ammeter, oil gauge, bumpers, twenty gallon gasoline tank, two headlamps, two side lamps driving attachment, Boyce moto-meter and propeller radiator cap, cigar lighter, tonneau light, full set tools and two extra rims on wheels as per equipment ordered, trunk rack, Exide battery, trouble light and socket, Briggs & Stratton switch, C. & A. motor driven horn and one hundred mile Stewart speedometer.

The Ace "Combat" Touring

THE COMBAT model ACE represents the Apex of development in automobile design and construction. It is a car with the highest degree of comfort obtainable, capable of any amount of rough, hard work and fast driving, dependable for year 'round service, perfectly balanced and beautiful in its appointments.

From any angle, the ACE "COMBAT" reflects personality and refinement, distinctive, with graceful lines; painted in rich color combinations, hand finished and upholstered with the best of hand buffed Spanish leather, in various colors, the "COMBAT" presents an appearance of unquestionable excellence.

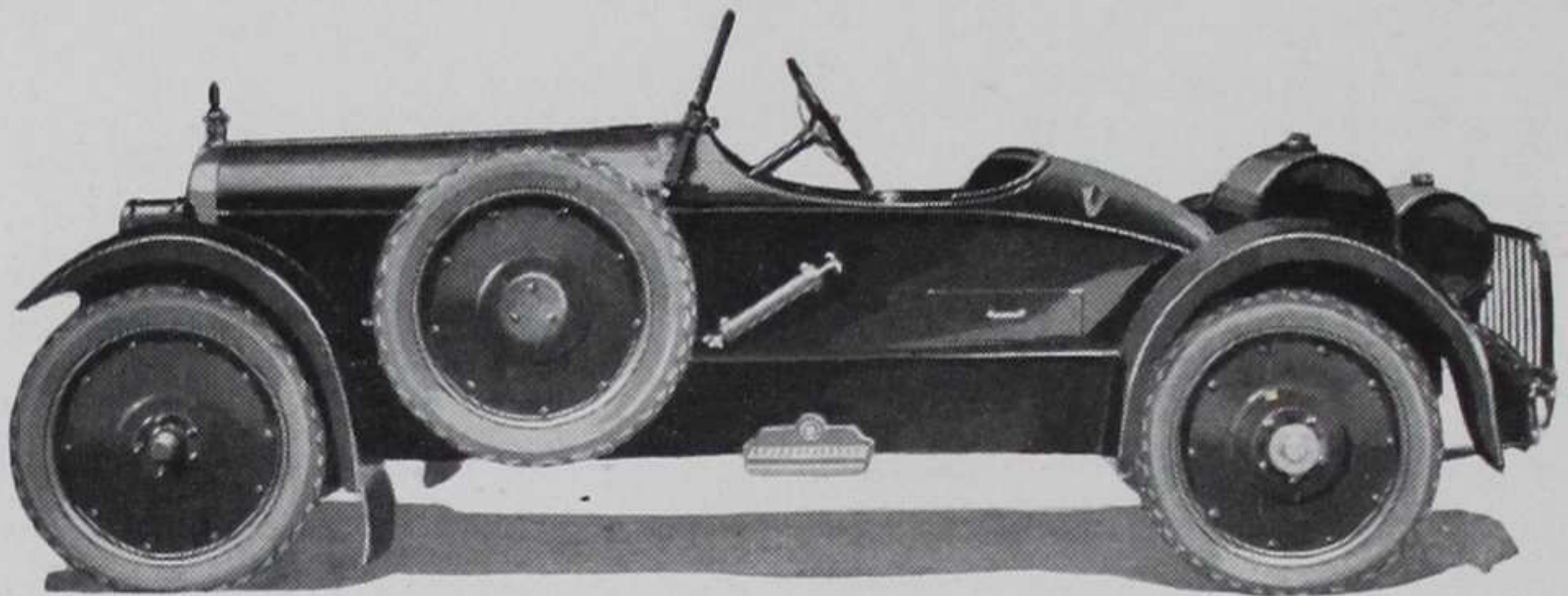
Built in either roadster or touring bodies, with snug fitting top and storm or winter curtains, water-tight windshield, the user has the protection of a closed car for all weather conditions. It is dependable winter and summer.

Closed models are also built on the standard "COMBAT" chassis. These are hand-built, to special specifications, with Brewster and Kimball bodies, finished and trimmed in the most exquisite manner, incorporating the ideas of the individual purchaser. These are cars with the charm of refinement and of personality. There are no finer motor cars built. Prices are dependent upon the special appointments and specifications of the buyer.

Powerful, with an eighty horse power, six cylinder $3\frac{5}{8} \times 5\frac{1}{4}$ Red Seal Continental motor, the "COMBAT" has ample reserve power for any and all emergencies.

The various other mechanical units used in the construction of the ACE "COMBAT" are all nationally known for their excellence and dependability and are recognized by motor car engineers throughout the world as the finest obtainable.

The "COMBAT" owner has that constant confidence which makes driving an unsurpassed pleasure. An ease of control, a softness of operation beyond description, a superior performance under all conditions are only a few of the numerous points of difference between the ACE "COMBAT" and other makes of cars of today.



THE ACE "COMBAT" SPEEDSTER

Specifications

MOTOR—Special Continental six cylinder, Model 6 TA, bore $3\frac{5}{8}$, stroke $5\frac{1}{2}$ inch, 35.80 H. P.

CARBURETION—Special Stromberg, hot air intake, hot spot manifold.

STARTING AND LIGHTING—Two unit, six volt.

IGNITION—Atwater-Kent, Type CC.

COOLING—Cellular radiator and centrifugal pump.

LUBRICATION—Force feed with supplementary feed pump on left side of body. Pressure gauge on dash.

CLUTCH—Dry plate, Warner, thirteen plates.

TRANSMISSION—Fuller TU three-speed sliding gear. Very quiet and easy shifting.

AXLES—Salisbury, three-quarters floating, rear. Axle ratios $2\frac{3}{4}$ to 1 and $3\frac{1}{2}$ to 1. Timken bearings, front. Drop forged I-beam section. Timken bearings.

SPRINGS—Semi-elliptic, silicon manganese alloy, very long and flexible assuring easy riding and freedom from breakage.

TIRES— $33 \times 4\frac{1}{2}$ Goodyear Cord, all weather tread.

BRAKES—Internal emergency and external service on wheels with $16 \times 2\frac{1}{2}$ -inch facings of Raybestos. All brakes equalized.

WHEEL BASE—120 inches. Turning radius eighteen feet.

STEERING—Left side, center control, eighteen-inch walnut wheel with horn button in center; Worm and split nut type, two adjustments.

BODY—Two-passenger, full aluminum body, oak and maple frame and uprights; disappearing seat in left side of rear panel; demountable top and irons and trim rail.

EQUIPMENT—Thirty-five gallon gas tank, ten gallon oil tank, cutout, front and rear bumpers, supplementary oil pump, headlights with dimmers and Patterson lens, two side lamps, Boyce moto-meter and moto-meter parking lamp, cigar lighter, clock, oil gauge, ammeter, Exide battery, trouble light and socket, one piece ventilating windshield, E. & A. motor driven horn, two extra wheels and carriers, trunk rack and one hundred mile Stewart speedometer.

The Ace "Combat" Speedster

FOR those who demand power and speed, power that is dependable and available at all times, speed that that may be enjoyed with safety.

Power and speed are most important elements in transportation of today but both lose their value, their attractiveness if not employed with safety and comfort.

The ACE "COMBAT" Speedster with its sturdy, well balanced construction, its snug, comfortable seats and its many convenient appointments, offers a most practical means of up-to-the-minute transportation.

Built to the highest standards, powered by the new Continental Red Seal $3\frac{5}{8} \times 5\frac{1}{4}$ six cylinder motor, with all other units oversized, hand-built with a carefulness and precision that is essential in obtaining the highest degree of excellence, the ACE "COMBAT" Speedster is indisputably a car of superior dependability, serviceability and performance.

There is a disappearing seat for a third passenger, a top that is quickly and easily removed or attached, a thirty-five gallon gasoline tank and a ten gallon oil tank, plenty of room under the rear deck for traveling bags or luggage and a trunk rack on the rear for use on extended trips.

Like the other ACE models, the "COMBAT" Speedster is painted and trimmed to order. The staggered bucket seats are upholstered in hand-buffed Spanish leather of various colors.

Graceful in every line, with a certain snap and smartness that radiates an atmosphere of speed and power, it has that distinctive appearance, that individuality that places it away above the ordinary speedster of today. It is a car for the most discriminating, a car of personality.

Warranty

All ACE Motor Carriages are guaranteed under the Standard Warranty of Automobiles adopted by the National Automobile Chamber of Commerce.

APEX MOTOR CORPORATION
Ypsilanti, Mich.