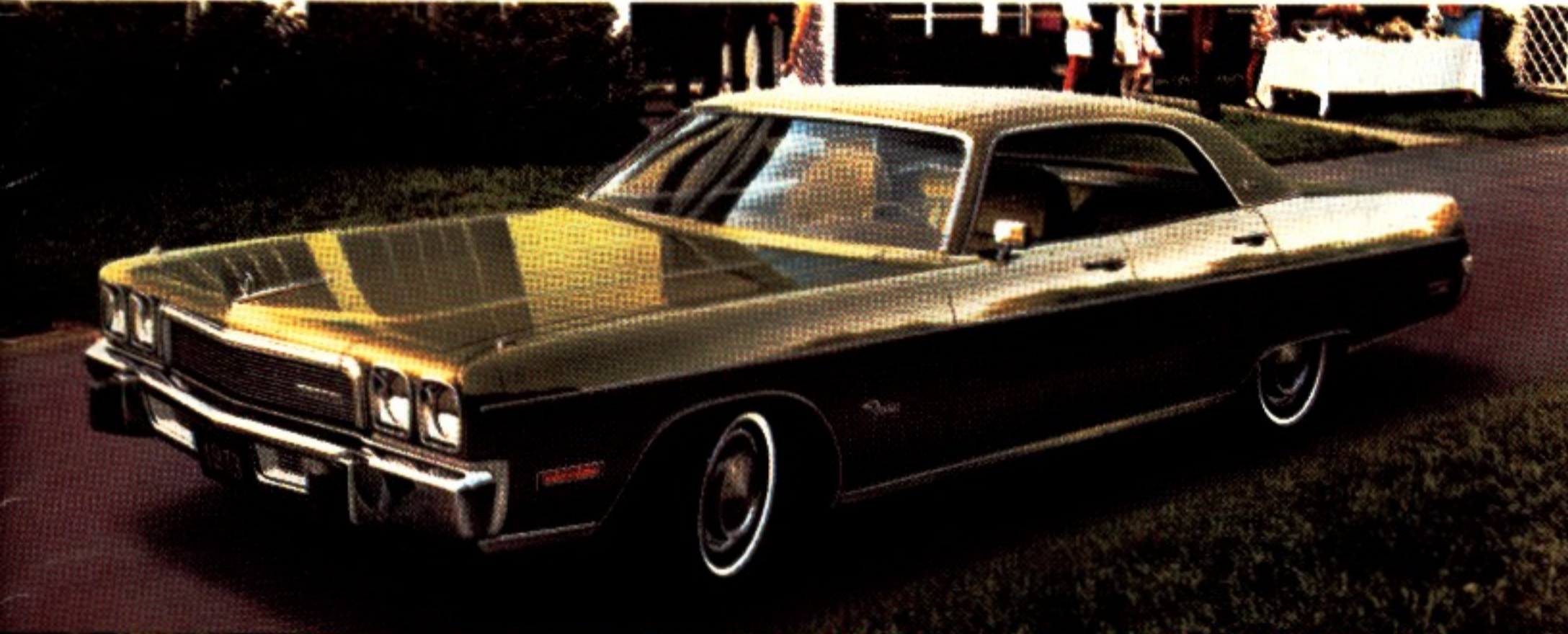


'73 PLYMOUTH

FURY • SATELLITE • VALIANT • DUSTER • SCAMP • BARRACUDA • 'CUDA • WAGONS



'73 PLYMOUTH

**EXTRA CARE IN ENGINEERING.
IT MAKES THE DIFFERENCE.**

When it comes to meaningful engineering innovations, the Plymouth lineup for 1973 measures up to all your expectations.

Plymouth offers a wide choice of big cars, middle-sized cars and small cars. Hardtops, Sedans, Wagons, Luxury Sport or Compact. All designed and built with extra care to give you honest value at an honest price.

Engineering innovations for 1973 include benefits that you can see and feel and experience. Here are some examples.

ELECTRONIC IGNITION SYSTEM

You get an Electronic Ignition System standard on all Plymouth cars. Compared to a conventional ignition system, Plymouth's electronic system is a hands-down winner. Plymouth's new system uses electronics that don't wear out instead of mechanics that do. For example: there are no points or condenser. That means there are none to replace . . . so you never have to worry about a periodic point adjustment. You also get a consistently higher voltage . . . by as much as 35% . . . for more dependable cold weather starts. It also helps eliminate many of the major causes of an engine misfiring and so reduces emissions caused by a poor spark. Excluding routine spark plug service, the system is virtually maintenance free.



EXTRA PROTECTION BUMPERS

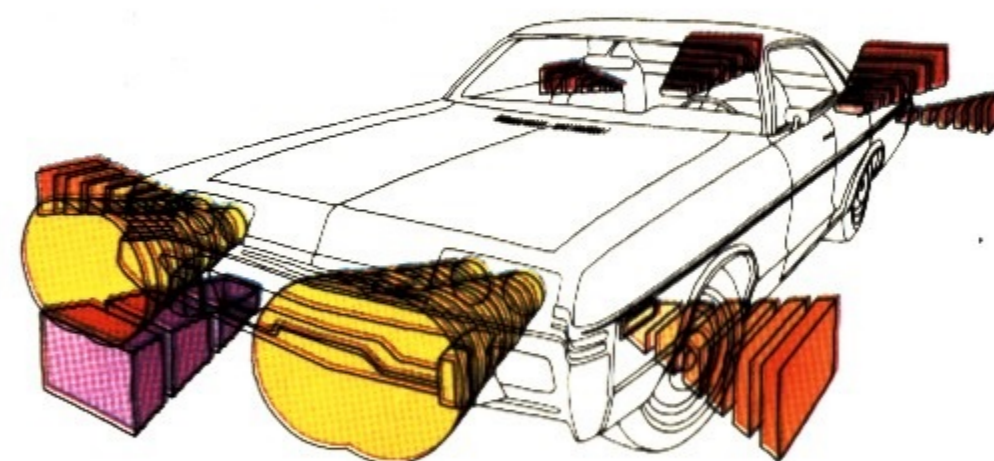
For 1973 Plymouth engineers have designed extra-protection bumpers that are capable of hitting a fixed barrier at 5 mph front and 2½ mph rear without any significant damage to the vehicle.

Why are the bumpers called "extra-protection"? Because the bumper itself is set out from the sheet metal as much as two inches to provide better



protection, and a full-width reinforcement is located behind the bumper surface to provide better beam strength during impact. There's also a bumper support structure using heavy gauge steel. And Plymouth's bumpers have elastomeric guards to help keep the bumper from slipping over or under the other car's bumper in a low-speed collision.

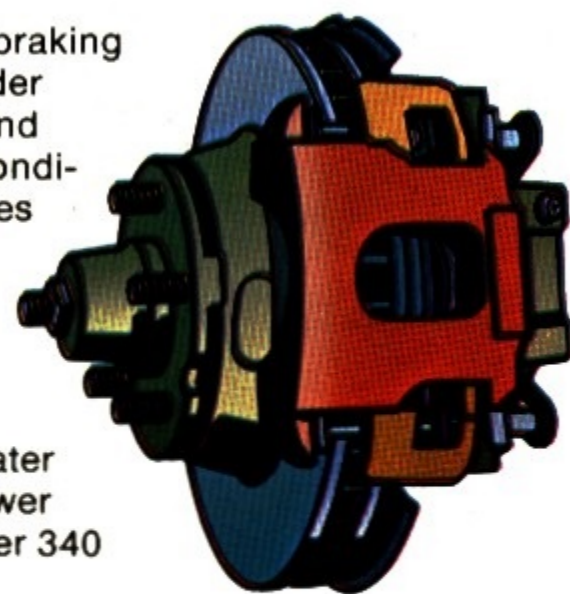
SECURITY ALARM SYSTEM



Plymouth also protects your Fury from illegal entry or usage with its new optional Electronic Security Alarm System. If doors, hood, trunk lid or tailgate are forced, or if the steering column lock is tampered with, the horn, headlights, taillights and side marker lights are immediately activated. The horn will continue to blare and the lights to flash as long as the violation occurs or until the battery runs down. After the violation has been stopped, the alarm will continue for three minutes and then shut down and instantly reset. Your ignition key will immediately shut off the alarm.

DISC BRAKES

To ensure predictable braking performance, even under repeated hard usage and extremes of weather conditions, Plymouth provides front disc brakes as standard on all 1973 models except the 6 cylinder Valiant and Duster, were they are optional. For even greater protection they are power assisted on Fury, Duster 340 and all wagons.



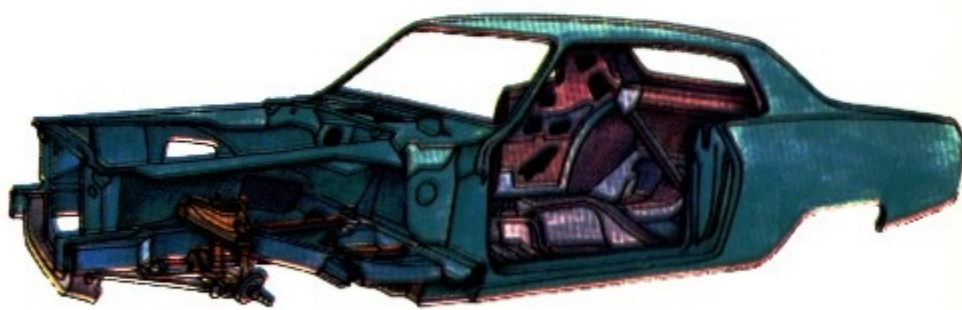
CLEANER AIR

Chrysler is also vitally interested in protecting the environment. Plymouth's Cleaner Air System is a highly integrated emissions control system that has been developed over the years to effectively reduce

the levels of hydrocarbons, carbon monoxide and oxides of nitrogen. For 1973 all engines are equipped with an electric assist choke to reduce emissions during starting and warmups. Other standard emission control items include the Exhaust Gas Recirculation System and the Orifice Spark Advance Control.

A TRADITION OF IMPROVEMENT

Plymouth has long been famous for its unibody construction. Every Plymouth car in this catalogue has it. Over 4,000 welds unite all parts of the body into a rugged single unit that minimizes rattles and squeaks.



And this year all models offer major chassis and interior improvements to even further reduce interior noise levels.



Torsion bar suspension, long a feature of Plymouth engineering, has proved an exceptional replacement for conventional front-end coil springs. Plymouth's torsion bars actually twist and flex to rid your car of road shock and to smooth out a bumpy road.

Unibody construction, sound isolation and torsion bar suspension; together they add up to Plymouth's driving excellence.

For your comfort, all Fury and Satellite models have as standard equipment a heater/defroster system with Upper Level Ventilation.

Your 1973 Plymouth . . . extra care in engineering . . . it makes the difference.

FURY

For families that like a little more room and want extra riding comfort Plymouth's Fury measures up . . . beautifully.

The first thing you'll notice about Fury is that luxury comes standard. The Fury engine is a powerful 318 V-8 and every Fury has power front disc brakes, power steering, the new Electronic Ignition System for more dependable cold weather starts, TorqueFlite automatic transmission and Chrysler's famed Torsion-Quiet Ride.

It all starts with unibody construction to help make your Fury strong and rattle free. The total ride package—tires, springs, shocks, linkage, etc.—are tuned together to give you the comfort, handling and stability you want. Up front flexible torsion bars twist away road shock, and our anti-sway bar helps keep the car level. To help keep your Fury quiet there's the Sound Isolation System. Eight rubber body-mount sound isolators separate the frame from the structure of the car. And there are pounds and pounds of sound deadening insulation material to shelter you from outside noise. When you put it all together, it adds up to Torsion-Quiet Ride.

Fury's inside story is one of choice and comfort as well as being quieter than ever, because Chrysler wants you to feel as comfortable in your Fury as you would in your home. Take room for instance. Fury has one of the largest interiors in the industry. Besides roominess you also get comfort. The driver's seat supports you, surrounds you with deep-foam padding. And it puts a whole world of comfort and convenience at your fingertips. A heating-defrosting system with upper level ventilation. Cooling from an optional air conditioner, an optional automatic speed control for relaxed highway driving. Your choice of music from an optional stereo cassette player. You can lock the doors, roll up the windows and enjoy the driving. And even do a few things you can't do at home—like open up an optional sun roof and take in the great outdoors.

The people who sit in the back of a Fury don't have to take a back seat in comfort; there's plenty of room for stretch out comfort. Even a six-footer won't bang his head on a Fury ceiling. Other little comforts you will enjoy include thick, cut-pile carpeting that covers the entire passenger compartment and will retain its good looks for years to come (N.A. Fury I).

Building what you want in a car . . . all in one car is Plymouth's goal. Secure, dependable driving to get you from place to place in comfort and luxury that comes standard. The 1973 Plymouth Fury measures up.

Options illustrated on this page are: automatic speed control, tilt and telescopic steering wheel and fender skirts.



MODEL AVAILABILITY	Fury I	Fury II	Fury III	Gran Series	Suburban	Custom Suburban	Sport Suburban
2-Door Hardtop	—	X	X	X	—	—	—
4-Door Sedan	X	X	X	—	—	—	—
4-Door Hardtop	—	—	X	X	—	—	—
2-Seat Wagon	—	—	—	—	X	X	X
3-Seat Wagon	—	—	—	—	—	X	X



GRAN SEDAN

The Fury Gran Coupe and Sedan are the most distinguished Plymouth models you can buy. Luxurious in every respect. Quiet and comfortable, with plenty of stretch out room for families that appreciate the finer things in life. A Torsion-Quiet Sound Isolation System dampens out road noise and outside hubbub, and an extra sound barrier is provided for rear seat passengers. Seating is comfortable and luxurious. Carpet is everywhere, including the lower portion of the door panels; and there are convenient door pull straps.

To give the Gran models a look of distinction, the hood is topped off with a stylish hood ornament. Body side mouldings with vinyl inserts help protect the acrylustre finish from parking lot dings. Special Gran ornamentation includes body belt and sill and wheel lip mouldings and jewel like wheel covers to complete the picture in the Gran manner.

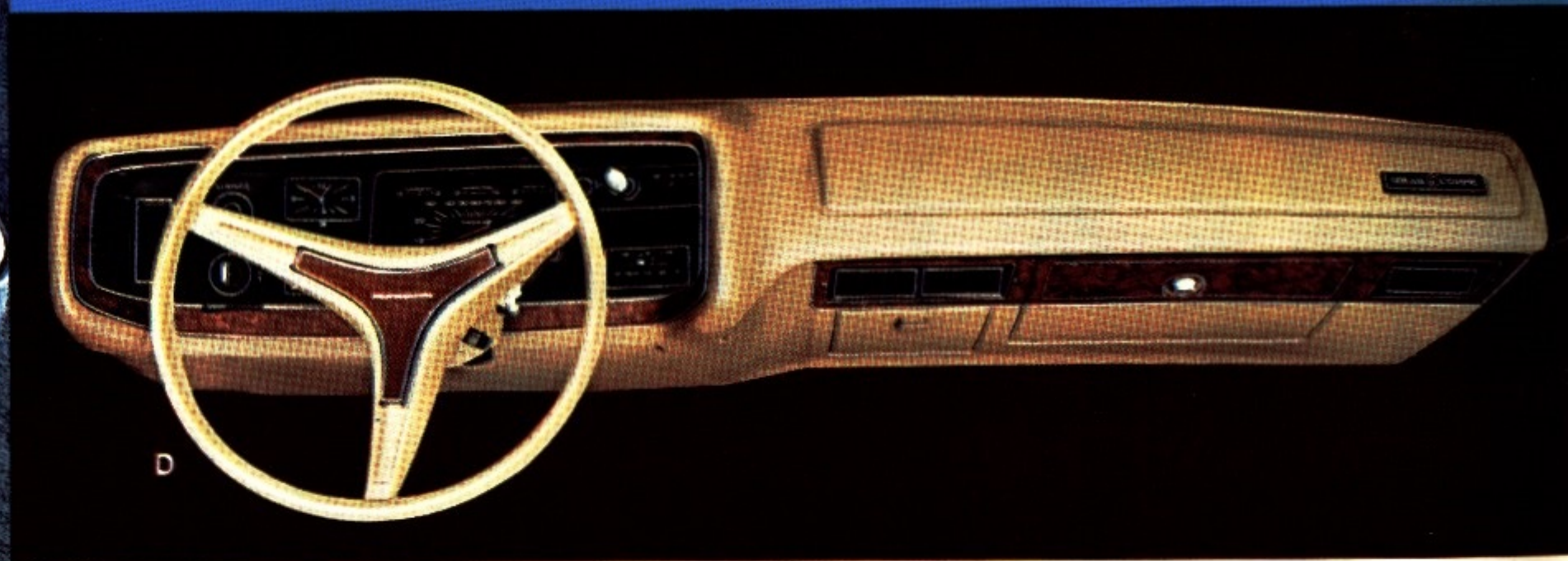


GRAN COUPE

The Gran Coupe is one of the biggest hardtops available. Distinctive good looks with a full measure of luxury, comfort, convenience and security. Long and low with aerodynamic styling that is bound to make heads turn wherever you go. Performance is outstanding with the standard 318 cubic inch V-8 matched with the smoothness of a TorqueFlite automatic transmission.

Options include a vinyl roof and even a power operated sun roof; air conditioning; AM/FM radios; automatic speed control; power windows, seat and door locks; the new Security Alarm System and 400 and 440 cubic inch V-8 engines. There's a special Trailer Towing Package that has been engineered with extra care for outdoor enthusiasts.

When you go the Gran Coupe way you go in top-of-the-line luxury.



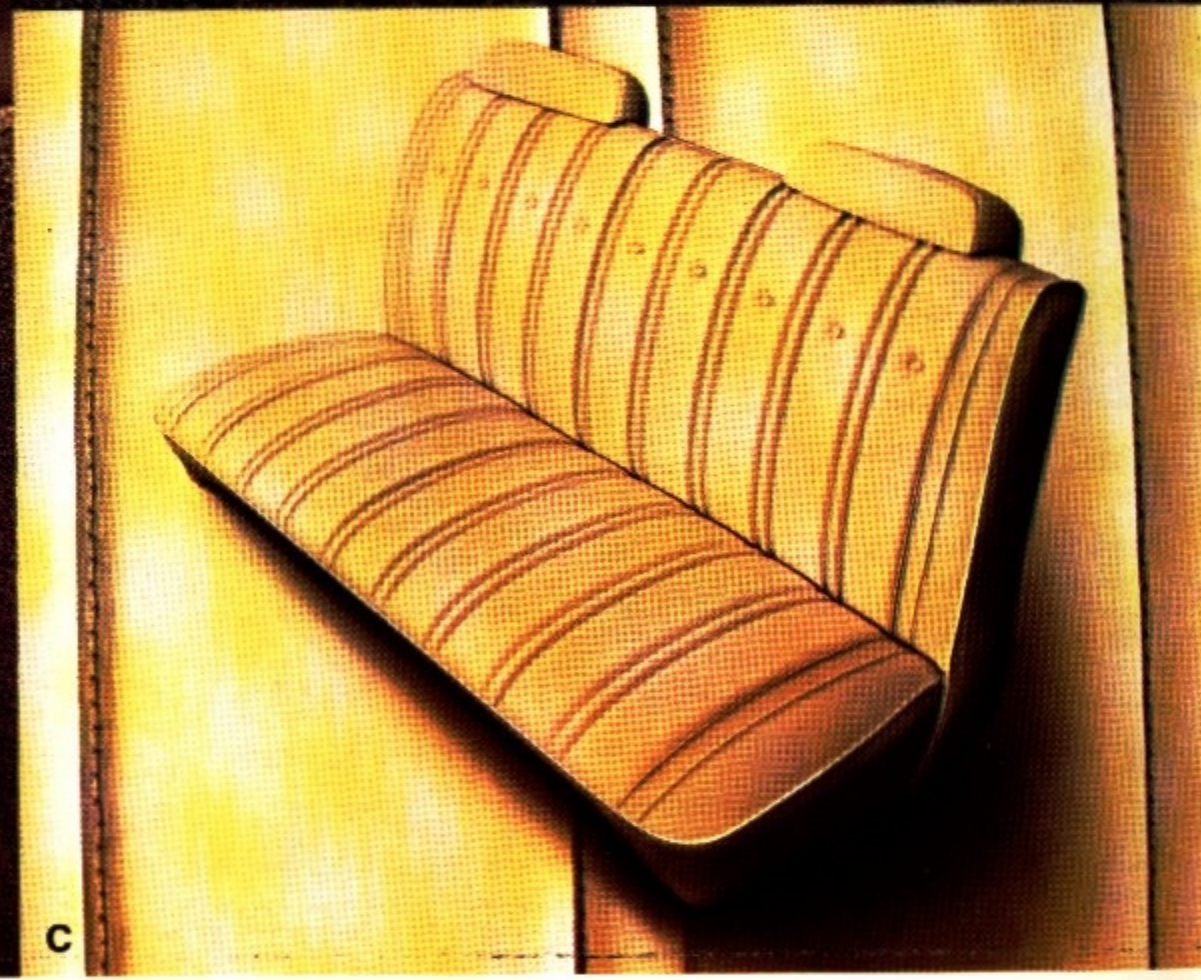
GRAN INTERIORS

- A. Standard all-vinyl bench seat with fold-down centre armrest available in blue, green, parchment, black or gold.
- B. Gran Coupe cloth-and-vinyl optional bucket seats with fold-down centre armrest in parchment or black. Also includes a passenger seat recliner. (Available with Brougham Package only).
- C. Gran Sedan cloth-and-vinyl 50/50 split bench seat with individual centre armrests and seat adjustment. Passenger seat recliner is standard. In blue, green, parchment or black. (Available with Brougham Package only).
- D. Handsome, burl-grained simulated walnut accents are inlaid in the instrument panel. All instrumentation is flood lit for quick easy viewing.



FURY III

There are three ways to go when you choose a Fury III . . . 2-door hardtop, 4-door hardtop and 4-door sedan. Year after year Fury III comes through with the kind of value you want. That's why it is Plymouth's most popular Fury. Torsion-Quiet Ride. Seven-stage dip-and-spray rust protection process. Buffable acrylustr finishes in your choice of 17 colours. And a long list of standard equipment like TorqueFlite automatic transmission, power steering and power front disc brakes. Just some of the built-to-last values that you'll find in every Fury. You'll also appreciate such Fury III features as side mouldings with vinyl inserts for extra protection, wheel lip mouldings, simulated wood grain accents on door trim panels and instrument panel, glove box light, ashtray light, trunk compartment light and many other safety and convenience items.



FURY III INTERIORS

- A.** Standard Fury III seating is a cloth-and-vinyl bench seat available in blue, green, black or gold for 2-door hardtops and in the same choice plus parchment for 4-door models.
- B.** Optional all-vinyl 50/50 split bench seat with individual centre armrests, seat adjustment and reclining seat back on passenger side. Available for 4-door models in black.
- C.** Optional all-vinyl bench seat available in green, parchment or gold.



FURY II & FURY I

Fury II is available in a 4-door sedan and a 2-door hardtop that is one of the lowest priced full-size hardtops on the market. Like all Fury models, the wheelbase measures a full 10 feet and it's over 18 feet long. It's the right sized car for families that want a full measure of comfort and roominess. The 318 cubic inch V-8 engine features the reliability of the revolutionary Electronic Ignition System, engineered with care to be practically maintenance free. Like all Fury models standard is a fully unitized body, automatic transmission, power steering, power front disc brakes. Of course, Fury's Torsion-Quiet Ride is standard, too.

The low-priced way to get Fury value and comfort is in the Fury I 4-door sedan.



FURY I & II INTERIORS

A. Standard interior for the Fury II models is a cloth-and-vinyl bench seat with adjustable head restraints in green, black or gold. Standard seating for the Fury I 4-door sedan (not illustrated) is a plaid cloth-and-vinyl bench seat with adjustable head restraints in blue, green, or black with white.

B. Optional all-vinyl bench seat for Fury I 4-door sedans. Available in blue, green or black. Head restraints are adjustable.

SATELLITE

Perhaps the best way to describe the 1973 Satellites is to say they are built to be seen . . . not heard.

The reason for our new quiet is Chrysler's famed Torsion-Quiet Ride. A unique combination of front torsion bar suspension, unibody construction and sound isolators. The result is a quiet, controlled riding experience.

Every new Satellite has Torsion-Quiet Ride. And the Sebring-Plus has even more sound reducing features. It's one of our "Super Quiet" cars for '73. Included is a larger sound barrier in the roof pillar and other sound deadeners and silencers in the floor, luggage compartment, door trim panels, steering column, rear wheelhousings and rear shelf panel.

These additions will make this year's Satellite Sebring-Plus the quietest intermediate-size car ever built by Chrysler Corporation.

The "seen" part is obvious. Though it's a family car in every respect, the contemporary look is anything but dull. Except for the roof, all Satellite 2-door models have been restyled in a fresh, tasteful look that's unique among intermediate cars.

Look at the Satellite sedans and hardtops. You'll see that they are distinctly different in style; except for a few obvious components there are no parts that can be interchanged. Even the grilles are individually designed to match the individual themes.

Satellite designers believe that two different body types deserve two different kinds of engineering and styling. The result is two looks, two feels for the sedan and hardtops—with no compromising. Each emerges with its best proportions intact. Each is just right for its own particular needs.

There are a host of standard features on all Satellites such as Chrysler's new extra-protection bumpers, an anti-theft ignition key warning buzzer and an anti-theft steering column lock. All Satellites also have a new deck lid lock design that offers substantially increased resistance to illegal entry. You also get Chrysler's new Electronic Ignition System and a heating-defrosting system with upper level ventilation . . . there are no points or condenser, so there are none to replace . . . it's practically maintenance free.

Front disc brakes are standard. And if you want, you can add a power booster to them. (Standard on wagons.) Another popular option for your Satellite is Chrysler's TorqueFlite transmission, long considered one of the leading automatics in the industry. You can dress up your Satellite with such exciting options as air conditioning, vinyl roof, radial tires, AM or AM/FM stereo radio, tape cassette or a sun roof (2-door models only).

A family car that's functional—and still has flair. The 1973 Satellite measures up.

Options shown on this page are: Road Runner hogd tape treatment, premier road wheels and bright bumper guards.



MODEL AVAILABILITY	Satellite	Road Runner	Satellite Sebring	Satellite Custom	Satellite Sebring-Plus	Regent
2-Door Coupe	X	X	—	—	—	—
2-Door Hardtop	—	—	X	—	X	—
4-Door Sedan	X	—	—	X	—	—
2-Seat Wagon	X	—	—	X	—	X
3-Seat Wagon	—	—	—	X	—	X



SEBRING PLUS

Here is the car that is built to be seen . . . but not heard. The Satellite Sebring-Plus. And that Plus stands for things like a "Super-Quiet" sound package with 38 additional square feet of acoustical padding in addition to Torsion-Quiet Ride. A standard 318 V-8 that runs on regular, low-lead gas. And special Sebring-Plus exterior ornamentation and interior trim. Though it's a family car in every respect the Satellite Sebring-Plus has a fresh, exciting look that's unique among intermediate cars. Vinyl bucket seats are standard, and rich wood-grain inserts are used to highlight the Rallye Cluster and steering wheel. Even the door trim panels feature a simulated wood appliqué. It's a Plus that adds up to extra value for you. For something "special" add a sliding sun roof, Rallye road wheels and G70 x 14 tires with raised white letters.



SATELLITE SEBRING

If you want a mid-sized hardtop with a full measure of style, performance and comfort Satellite Sebring is the car for you. Like all Satellites it has a Torsion-Quiet Ride, front disc brakes and the revolutionary Electronic Ignition System that's practically maintenance free. You can tailor your Sebring to your taste with a host of options that include a sliding sun roof, air conditioning, power steering and the smooth-operating TorqueFlite automatic transmission. Standard engines are the 225 cubic inch slant-six and the 318 cubic inch V-8. A 400 cubic inch V-8 is available in single and dual exhaust versions. Standard seating is a cloth-and-vinyl bench in a choice of blue, green, black or gold. The buffable acrylustr finish is available in 17 colours that are applied on top of a 7-stage dip-and-spray rust-preventative treatment to keep your Satellite new looking for years.



SATELLITE COUPE

The Satellite Coupe gives you big value at a mid-sized price. It's got the smooth handling and quiet driving of Chrysler's Torsion-Quiet Ride. Front torsion bar suspension for firm, sure control behind the wheel, and unibody construction for a solid road-feel. An all-vinyl interior is standard. It's good looking and designed to stand up to the beating a young family can give. To help stop rust before it starts, every Satellite goes through a 7-stage dip-and-spray rust protection process. Then the acrylustre finish is applied, in a choice of 17 colours, to make sure your Satellite stays bright and shining for a long time to come. The Satellite coupe's low basic price lets you add extra equipment for your convenience and enjoyment . . . like a sun roof or an AM/FM radio with stereo cassette.



ROAD RUNNER

The popular bird . . . the Road Runner . . . has lost none of its sporty appeal in '73. Basic equipment proves it is still an 'honest' Road Runner. You get a 318 cubic inch V-8 with dual exhausts. A three speed, all synchromesh, floor mounted manual transmission. Front and rear sway bars. Front disc brakes. Rallye wheels. F70 x 14 tires with raised white letters. A performance hood. And special Road Runner dress-up stripes and identification. Those are the basics. If you want more bird, it's easy to build your Road Runner up to whatever you fancy. Styled road wheels. Bucket seats. Console. Racing mirrors. Tachometer. Sun roof. 440 CID V-8 with 4-barrel carburetor and dual exhausts. And a Performance Axle Package that includes Sure-Grip Differential, heavy duty axle and special engine cooling components. There's more too.



SEBRING & ROAD RUNNER INTERIORS

A. Standard Sebring-Plus all-vinyl bucket seats with integral head restraints available in blue, green, parchment, black, gold, and white with black. Also available as an option for Road Runners.
B. Optional all-vinyl bench seat in blue, green, parchment, black or gold for Sebring and Road Runner.
C. Standard bench seat for Satellite Coupe and Road Runner. All-vinyl plaid design in a choice of blue, green or black. Also shown is the Satellite instrument panel.



SATELLITE CUSTOM & SATELLITE

There are two ways to get family-sized room in a mid-sized package. Satellite Custom and Satellite sedans. They are unique in the intermediate class because Chrysler designers believe that sedans require different kinds of engineering and styling than hardtops.

These sedans are built on a 117" wheelbase which makes them easy to handle and park. But the extra inches in wheelbase, over the 2-door models, provide 6 passenger roominess for families on the go. These sedans have all the "extra care in engineering" features that you will appreciate. Front disc brakes, Torsion-Quiet Ride, unibody construction, Electronic Ignition System and more.

Standard power is the economical 225 cubic inch slant-six or the 318 cubic inch V-8. A wide choice of options is available.

Left: SATELLITE
 Right: SATELLITE CUSTOM



SATELLITE SEDAN INTERIORS

- A.** Satellite Custom 4-door sedan seat is a cloth-and-vinyl bench with adjustable head restraints available in blue, green, black or gold.
- B.** Optional all-vinyl bench seat available for Custom 4-door sedan. Colour choice is blue, green, parchment, black or gold.
- C.** Standard all-vinyl plaid design bench seat for Satellite 4-door sedan available in blue, green or black.

COMPACTS

Choosing a Valiant, Scamp, Duster or Barracuda means you like the feel and handling of a compact, yet don't want to give up style and comfort.

Valiant, the 13 year veteran of the compact field is still going strong. The 4-door Valiant is another name for value. The 2-door hardtop model, Scamp, has a little longer wheelbase. The Duster Coupe, runaway best seller for two years, offers the same great value but with a little more dash, while the Barracuda is designed especially for the sports enthusiast with a limit to his budget.

Whichever you choose, the short wheelbase, torsion bar suspension and compact body insure nimble roadability and parking ease, while unibody construction makes these cars tough and strong.

Torsion bars have been a feature of Chrysler products for over a decade and have proved an exceptional replacement for the conventional front end suspension. All Plymouths have unibody construction which utilizes thousands of welds to unite all parts of the body into a rugged single unit that minimizes rattles. In addition, unique sound deadening elements add a new dimension of quiet.

The Chrysler Electronic Ignition is standard on all models. This unique innovation does away with breaker points—a normal trouble source. Now the only wear areas in the distributor are simple bearings which require only a drop of oil every 24,000 miles.

You have undoubtedly heard about the superior features of disc brakes. This added safety feature is standard on all Dusters, Valiants, and Barracudas with V-8 engines. The front disc brakes are equipped with slotted brake linings for improved braking capability, and the characteristic of the disc system to greater fade-resistance under continuing braking conditions is an added safety margin.

Though the "under-skin" improvements in the 1973 Plymouth compacts are a primary concern the visible elements are more appealing too! For instance, the striking new hood and grille on the Valiant and Duster give a new character to these compacts.

Two especially exciting options are the sliding sun roof and the Spacemaker Pak. The manually operated sun roof gives the open air feeling of a convertible with the safety of a hardtop.

With the Spacemaker Pak the Duster becomes a mini-wagon! Convert from a five-passenger to a two-passenger with a big 56 cubic foot cargo area by snapping the rear seat-back forward and securing it behind the front. Then you have a long carpeted space all the way back to the deck lid for sports and camping gear.

When it comes to compact handling and economy with big-car comfort. Along with the pleasure of owning something special. Plymouth measures up with Valiant, Scamp, Duster and Barracuda.



MODEL AVAILABILITY	Duster	Duster 340	Valiant	Scamp	Scamp Special	Barracuda	'Cuda
2-Door Sport Coupe	X	X	—	—	—	—	—
2-Door Hardtop	—	—	—	X	X	X	X
4-Door Sedan	—	—	X	—	—	—	—

Options shown on this page are: the sliding sun roof, canopy vinyl roof and Duster Spacemaker Pak.



DUSTER & 340

Duster is that neat little sport coupe that's small enough to go anywhere and do anything, yet big enough to do it with five passengers rather than four. Rugged unibody construction coddles you in quiet comfort. Torsion bar suspension gives road handling stability. On the Duster, big economical slant-six or 318 V-8 engines run merrily along on regular gas. On the Duster 340 you get a 340 CID engine with 4-barrel carburetor and dual exhausts. Both are available with the Space-maker Pak that makes it possible to convert your Duster to a mini-wagon with 56 cubic feet of cargo area for hauling sports gear and camping equipment. Other options include a sliding sun roof that lets you catch the sun and the breeze. And for the Duster there's a special "Twister" Package that includes dual racing mirrors, bright trim mouldings, performance hood treatment and body side and rear deck tape treatment.



VALIANT & SCAMP

Choosing a Valiant or Scamp means you like compact feel and handling, yet you don't want to give up style and comfort.

The short wheelbase torsion bar suspension and compact sized body insure nimble roadability and parking ease, while unibody construction makes these cars tough and strong. The revolutionary Chrysler Electronic Ignition System is standard, and that means fewer emissions and less money to spend when tune-up time comes around. The extra-protection bumper system is standard so front and rear dings and dents caused by low-speed impacts are practically eliminated. The luggage compartment is spacious because the spare tire is tucked away under the floor. Valiant and Scamp give you exceptional value for your transportation dollar.

Drive one and learn the difference that extra care in engineering makes.

Left: VALIANT 4-DOOR SEDAN
Right: SCAMP 2-DOOR HARDTOP



BARRACUDA &'CUDA

Sporty appearance and sporty performance. Barracuda and 'Cuda both measure up beautifully. Barracuda and 'Cuda come with a 318 CID V-8. You can get a potent 340 cubic inch V-8 with a 4-barrel carburetor and dual exhausts as an option. With the 'Cuda you also get a sporty hood, heavy duty suspension, F70 x 14 white side wall tires and 7-blade TorqueFan drive. Order a Barracuda with the 340 CID V-8 and you also get these 'Cuda features. Standard transmission is the 3-speed manual floor mounted, and with the 340 there's an optional Hurst shifter and four speed manual transmission. To complete the sports picture a wide choice of options is available including vinyl roof, body side tape stripes, console to fit between the standard bucket seats, racing mirrors, Rallye or Chrome styled road wheels and a Rallye Cluster that includes tachometer, clock, 3-speed windshield wipers, oil pressure gauge, tripodometer and 150 mph speedometer.

Left: 'CUDA
Right: BARRACUDA



DUSTER, VALIANT & BARRACUDA INTERIORS



- A. Optional all-vinyl split-back bench seat with centre armrest and integral head restraints. Available in blue, green, parchment or black on Duster, Valiant and Scamp.
 B. Valiant standard all-vinyl bench seat comes in a choice of blue, green, or black.
 C. Valiant optional cloth-and-vinyl bench seat available in blue, green, black or gold.
 D. Duster and Scamp Special standard cloth-and-vinyl bench seat with integral head restraints in blue, green or black and white.
 E. Barracuda standard all-vinyl buckets available in your choice of blue, green, black or white with black.
 Also shown is the Duster instrument panel.

WAGONS

One of the nicest things about selecting a '73 Plymouth wagon is the choice. Three big Furies. Three mid-sized Satellites. With a choice of 2 or 3-seat models in each.

Each one is packed with standard features. Consider the following; Chrysler's famous Torsion-Quiet Ride combining unibody construction, torsion bar suspension and unique sound insulation make all Plymouth wagons an experience in quiet; the Electronic Ignition System which does away with breaker points—a normal trouble source; an Electric Assist Choke for better starting; extra-protection bumpers; and power front disc brakes for improved braking capability. On Fury models automatic transmission and power steering are also standard.

The load space in both the Fury and Satellite wagons is extensive. Each one can hold 4' x 8' sheets of plywood with the tailgate closed. And each has three-way tailgate convenience—it opens as a door with the glass up or with the glass down, as well as folding down for extra long loads. Three-seat models are available with an Auto-Lock* which locks the tailgate automatically each time the ignition is turned on; it provides additional safety for children riding in the back. Another useful feature when considering a wagon, the back glass stays clean much longer with a roof air deflector—standard on Fury, optional on Satellite. All two-seat wagons have an added storage hideaway in an under-the-floor compartment. And storage trays are located along the sides of the cargo area on all models.

A V-8 engine is standard on all wagons (360 on Sport Suburban, 318 on all others), large enough for any load, and if the outdoor life is what you like then add an optional Trailer-Towing Package. Interiors are all vinyl to provide extra protection against wear and tear. And there's a whole list of options to choose from to customize your wagon to your needs such as dual air conditioning which comfort cools the whole wagon front to rear (Fury only), a luggage roof rack of anodized aluminum and stainless steel for beauty and durability, assist handles for easy entry into the rear of your 3-seat Fury, and the new Security Alarm System on Fury to protect your wagon from illegal entry.

Thinking about a wagon? Every Fury and Satellite model is a prime example of Chrysler's extra care in engineering. From the luxury of the Fury Sport Suburban to the rugged economy of the Satellite, Plymouth measures up.

*Standard Satellite 3 seat wagons.

Shown on this page are:
A. Optional trailer towing package.
B. Roof air deflector—standard on Fury, optional on Satellite.
C. Optional luggage roof rack.
D. Standard three-way tailgate.



MODEL AVAILABILITY	Satellite	Satellite Custom	Satellite Regent	Fury Suburban	Fury Custom Suburban	Fury Sport Suburban
2-Seat Wagon	X	X	X	X	X	X
3-Seat Wagon	—	X	X	—	X	X



FURY SPORT SUBURBAN

Fury Sport Suburbans come in 2-seat and 3-seat versions. Both on a long 122" wheelbase. Note the beauty of the wood-grain side paneling. The roof air deflector is standard and helps to keep the rear window free from road dust. The three-way tailgate with hardtop window design can be opened with the glass up or down as a door or flat down for extra long loads. Standard power is the big 360 CID V-8. Silky smooth TorqueFlite automatic transmission and power steering are standard as are the power front disc brakes. The all-vinyl interior is easy to maintain and the front seat is a split back bench with centre armrest and integral head restraints. The instrument panel has simulated wood-grain inserts. On the 3-seat model the third seat faces to the rear. There's an optional Auto-Lock system with a safety feature which automatically locks the tailgate when the ignition is turned on.



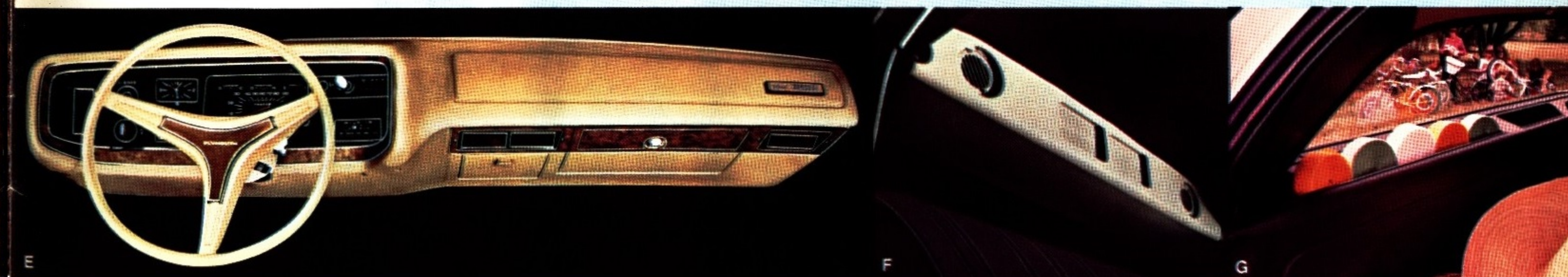
FURY SUBURBAN & CUSTOM SUBURBAN

26 Left: FURY SUBURBAN
Right: FURY CUSTOM SUBURBAN

These two wagons in the Fury line provide all the utility and comfort you could ask for in a big roomy wagon. The Custom model is available in a 2 and 3-seat version. Both models have all the standard Fury wagon features; Electronic Ignition System, power steering, TorqueFlite automatic transmission, unitized construction, Torsion-Quiet Ride, torsion bar suspension, roof air deflector, inside hood release, power tailgate window, power front disc brakes and the capacity to carry a 4' x 8' sheet of plywood flat on the floor. You ride on seats that are the result of computer technology which carefully correlates spring deflection, stress level and fatigue characteristics for your maximum seating ease. Two-seat models have a handy under-the-floor storage compartment to keep valuables out of sight. Standard power is the 318 CID V-8. The Security Alarm System is optional.



Fury wagons are big, roomy cars that are finished with living room comfort and decor . . . pleasing to the eye and the body, with convenience built-in. You ride on seats that are a product of computer technology which carefully correlates spring deflection, stress level, and fatigue characteristics for your maximum seating ease.



FURY WAGON INTERIORS

- A. Sport Suburban standard all-vinyl split-back bench seat with centre armrest in your choice of blue, green, parchment, tan, black or gold.
- B. Custom Suburban standard all-vinyl bench seat available in blue, green, parchment, tan, black or gold.
- C. Suburban optional all-vinyl bench seat comes in blue, green, black or gold.
- D. Suburban standard all-vinyl bench seat in black or gold.
- E. Sport Suburban instrument panel features inlaid burl-grained simulated walnut accents.
- F. Optional dual air conditioning . . . comfort cools the whole wagon, front to rear.
- G. Storage trays are located along the sides of all models.



SATELLITE REGENT

Value with class is the hallmark of the Satellite Regent. The side outer dimension is sheathed in rich simulated wood paneling that's reflectorized in the rear. Like all Satellite wagons it gives you 91 cubic feet of cargo space. A 318 CID V-8 provides the power. The power front disc brakes provide fade-free stops. The extra-protection bumper system protects front and rear against minor bumps. The Satellite Regent is available in 2 and 3-seat models. The cargo compartment is carpeted. Of course, the Torsion-Quiet Sound Isolation System is standard on all Satellite wagons, as is the 3-way tailgate. The Regent interior is all-vinyl and the front seat has a fold down centre armrest. Options include a 400 CID V-8 in 2 and 4-barrel versions, roof air deflector and luggage rack, power tailgate window, air conditioning and many other comfort and convenience features.



SATELLITE & SATELLITE CUSTOM WAGONS

All the right reasons for owning a wagon are met by these Satellite wagons. Room . . . comfort . . . handling performance . . . convenience. The Custom is available in a 3-seat model with rear facing third seat. All Satellite wagons will carry a 4' x 8' sheet of plywood flat on the floor and feature the 3-way tailgate . . . folds down for cargo . . . out for people . . . and can be opened as a door with the glass up. Satellite and Satellite Custom two-seat models provide a useful under-the-floor storage compartment. Handy storage trays are located along the sides of the cargo area. Standard equipment includes the revolutionary Electronic Ignition System, Torsion-Quiet Ride, Extra-protection bumper system, power front disc brakes, AutoLock tailgate (3-seat models), Bias belted tires with safety rim wheels.

Left: SATELLITE CUSTOM
Right: SATELLITE



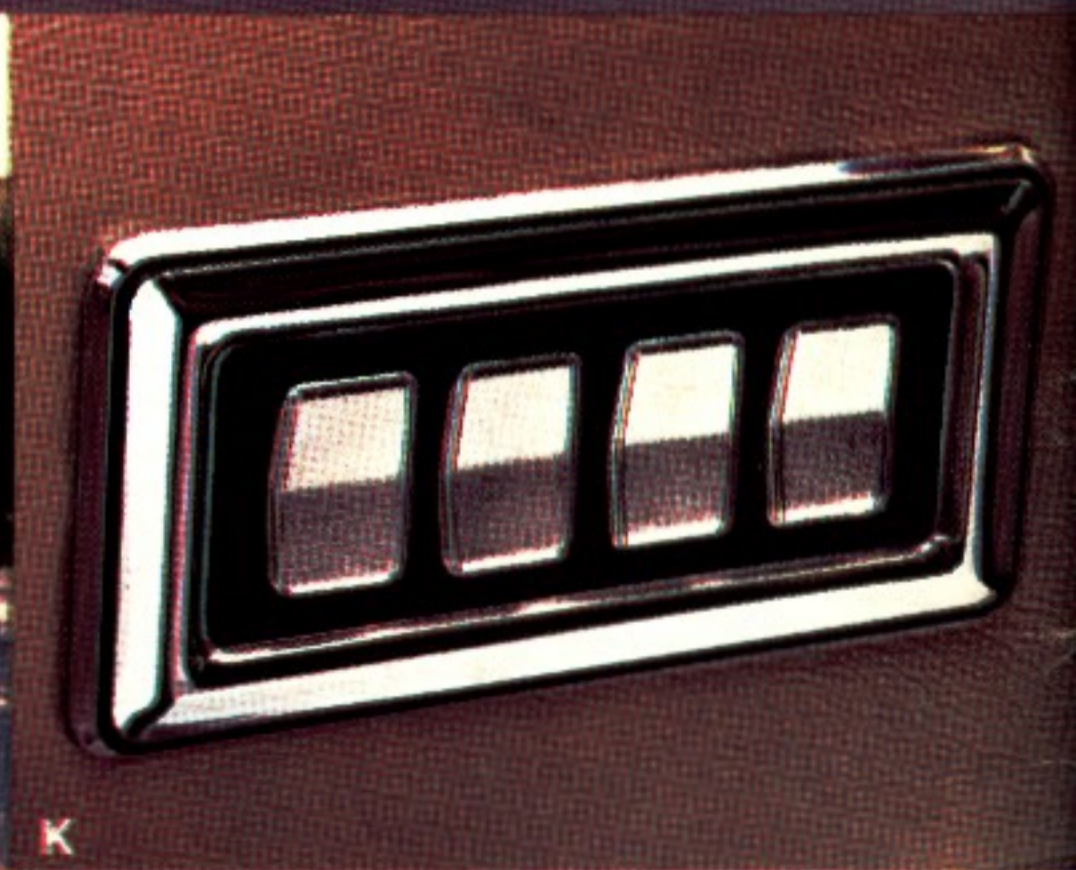
SATELLITE WAGON INTERIORS

- A.** The standard Satellite Regent all-vinyl split-back bench seat with centre armrest and integral head restraints is available in blue, green, black, gold or tan.
- B.** The standard Satellite Custom all-vinyl bench seat comes in blue, green, black, gold or tan.
- C.** The Satellite standard all-vinyl plaid design bench seat in a colour choice of blue, green or black.



OPTIONS

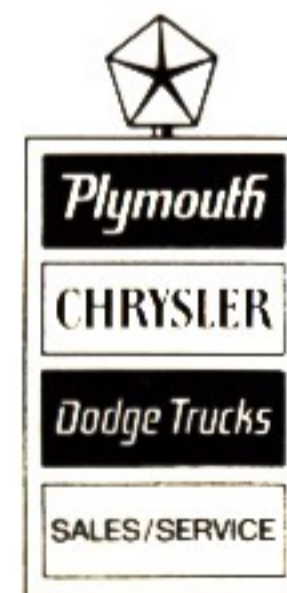
- A.** Wide range of radios AM and AM/FM
- B.** Remote control left outside rearview mirror
- C.** Tilt steering wheel—Fury
- D.** Electrically heated rear window defroster—Duster
- E.** Rallye Road Wheels—Satellite—Valiant—Barracuda
- F.** Electric door locks—Fury
- G.** Automatic speed control—Fury
- H.** Premier wheel covers—Satellite
- I.** Vinyl Roof—Canopy type—Duster
- J.** Vinyl Roof—Full type—all models except wagons
- K.** Vinyl body side protection mouldings—selected models
- L.** Sliding sun roof—Fury—Satellite—Valiant—selected models
- M.** Fender skirts—Fury (except Suburbans)



OPTIONS

- A. Hurst Shifter—Duster 340 and Satellite with 4 speed transmission
- B. Cassette tape player—available AM/FM radios
- C. Hood tape treatment—Road Runner
- D. Security Alarm System—Fury models
- E. Chrome styled Road Wheels—Barracuda and Satellite,

- F. Hood Scoops—Duster Twister package
- G. Power seats—Fury models
- H. Air conditioning—Available all models
- I. Spacemaker Pak—Duster models
- J. Trailer Towing package—all models except Barracuda
- K. Power windows—Fury and Satellite



All product illustrations and specifications are based on authorized information. Although descriptions are believed correct at publication approval, accuracy cannot be guaranteed. Some of the equipment shown on product illustrations is optional, at extra cost. Chrysler Canada Ltd. reserves the right to make changes from time to time, without notice or obligation, in prices, specifications, colours and materials, and to change or discontinue models.

