

All change.



GLXi Hatch

PRICE LIST (Northern Ireland) 1st March 1996

WHAT CAR?
CAR
OF THE
YEAR
AWARDS 1996
SKODA FELICIA LXI
BEST BUDGET CAR



Volkswagen Group

Specification Data

Model	LX	LXi	LXi Plus	GLXi
External equipment	54bhp	68bhp	68bhp	68bhp
Halogen headlights	●	●	●	●
Internally adjustable headlight beam level	●	●	●	●
Halogen front fog lights				●
Twin rear fog lights	●	●	●	●
Twin reversing lights	●	●	●	●
Twin internally adjustable door mirrors	●	●	●	●
Two speed windscreen wipers	●	●	●	●
Intermittent windscreen wipe facility	●	●	●	●
Variable intermittent windscreen wipe facility				●
Rear window wash/wipe	●	●	●	●
Heated rear window	●	●	●	●
Integrated front spoiler	●	●	●	●
Rear tailgate spoiler	●	●	●	●
Rear mudflaps	●	●	●	●
Five speed transmission	●	●	●	●
Child safety locks on rear doors	●	●	●	●
Full width wheel trim covers - LXi Plus design			●	
Full width wheel trim covers - GLXi design				●
Bodyside protective moulding				●
Glass tilt sunroof				●
Locking petrol cap and cover flap	●	●	●	●
Rear mounted roof aerial		●	●	●
Tinted glass				●
White front indicator lenses	●	●	●	●
Wheel trim centre cap	●	●		
Roof rails (Estate only)				●
Interior equipment				
Engine immobiliser		●	●	●
Digital clock				●
Cigarette lighter				●
Lights on warning signal	●	●	●	●
Dipping interior mirror	●	●	●	●
Height adjustable front and rear head restraints (four)	●	●	●	●
Height adjustable inertia reel front seat belts	●	●	●	●
Rear inertia reel seat belts (two) and centre lap belt	●	●	●	●
Blaupunkt stereo radio/cassette with 'quick out' facility		●	●	
Blaupunkt stereo radio/cassette, security coded				●
Handbrake warning light	●	●	●	●
Rear passenger area heating ducts	●	●	●	●
Analogue clock	●	●	●	
Rev counter				●
Passenger overhead grab handles	●	●	●	●
Rear ashtrays in doors	●	●	●	●
Interior boot light				●
Fully reclining front seats	●	●	●	●
Removable folding rear seat	●	●	●	●
Removable folding rear seat with 60/40 assymetric split			●	●
Cloth upholstery	●	●	●	
Velour upholstery				●
Ribbed floor carpet	●	●	●	
Cut-pile velour floor carpet				●
Front and rear carpet mats				●
Front door pockets	●	●	●	●
Internal side impact protection	●	●	●	●
Fully trimmed interior door mouldings, in fabric finish	●	●	●	
Fully trimmed interior door mouldings, in knitted fabric finish				●
Remote tailgate release			●	●
Glovebox with lid	●	●	●	●
Centre console with cassette holder			●	●
Central locking, operating from both front doors			●	●
Air blending heating/ventilation system with four speed fan and shut off facility	●	●	●	●
Parcel shelf	●	●	●	●

Škoda Felicia Technical Specification

	LX	LXi/LXi Plus	GLXi
	54bhp	68bhp	68bhp
Engine	4 cylinders in line, spark ignition, fluid cooled, overhead valve inclined 20° forward, transversely mounted – Front wheel drive - three-way catalytic converter		
No. of cylinders	4	4	4
Displacement	cc	1289	1289
Cylinder bore/stroke	mm	75.5x72	75.5x72
Max. output	Bhp (kw)/rpm	54 (40)/5000	68 (50)/5500
Max. torque	lb ft. (N.m)/rpm	69 (94)/3250	74 (100)/3750
Compression ratio		8.8 : 1	9.7 : 1
Fuel system	Electronic, Bosch-Monomotronic single point		
Ignition	Electronic, microprocessor controlled		
Lubrication	Circulatory pressure lubrication with full flow oil filter		
Battery	12V/55 AH		
Alternator	14V/55A		
Fuel-Unleaded petrol	Min. Octane No.	91	95
Transmission			
Clutch	Mechanically operated, single-plate, dry clutch, asbestos-free lining, 190 mm diameter		
Gearbox	5-speed, synchronised		
Gear ratios	I-3,308 II-1,913 III-1,267 IV-0,927 V-0,717 R-2,923		
Final drive ratio	4.16		
Running gear			
Front axle	McPherson suspension, triangular bottom struts		
Rear axle	Trailing arm with torsion crossbeam; anti-roll bar (hatch only)		
Springs	Coil, shock absorbers inside		
Brakes	Hydraulic, dual diagonal circuit, split vacuum servo assistance, apportioning valve on rear drums, dual brake master cylinder, 22 mm diameter		
Front brakes	Disc, 236 mm diameter, single piston floating caliper		
Rear brakes	Drum, 200 mm diameter, two-shoe		
Hand brake	Mechanical, acting on rear wheels		
Steering	Rack and pinion steering. 3.7 turns lock to lock		
Wheels	4.5Jx13" (5.5Jx13" light alloy, optional)		
Tyres	165/70 R 13		
Capacities			
Fuel tank	gallons (1)	9.2 (42)	
Coolant	pints (1)	10.6 (6)	
Engine Oil	pints (1)	7.0 (4)	
Gearbox and final drive	pints (1)	4.2 (2.4)	
Washer reservoir	pints(1)	5.3 (3)	

SERVICE INTERVALS

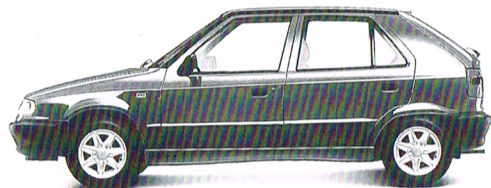
A basic Inspection is carried out once after 1500 km (1000 miles) without an engine oil change.

An engine oil change is performed every 15,000 km (10,000 miles).

An Annual Inspection should be carried out every 12 months. The Annual Inspection always includes an Oil Change Service.

■ An Oil Change Service is required if the vehicle is driven 15,000 km (10,000 miles) in less than a year.

■ If the vehicle is driven more than 30,000 km (20,000 miles) in a year, the Annual Inspection should be carried out every 30,000 km (20,000 miles) and not once a year.



Škoda Felicia		Hatch		
		LX	LXi/LXi Plus	GLXi
		54bhp	68bhp	68bhp
Body				
Type	5-door, 5-seat, steel monocoque			
Air drag coefficient	Cd	0.34		
Area	cw. A m ²	0.66		
Exterior dimensions				
Length	(ft) (mm)	12' 8" (3855)		
Width	(ft) (mm)	5' 4" (1635)		
Height	(ft) (mm)	4' 7" (1415)		
Wheelbase	(ft) (mm)	8' (2450)		
Ground clearance	(ft) (mm)	4" (110)		
Front track	(ft) (mm)	4' 8" (1420)		
Rear track	(ft) (mm)	4' 6" (1380)		
Interior dimensions				
Front seat width	(ft) (mm)	4' 8" (1420)		
Back seat width	(ft) (mm)	4' 7" (1398)		
Height at front seats	(ft) (mm)	3' 2" (967)		
Height at back seats	(ft) (mm)	3' 1" (932)		
Boot volume	Cu. ft (l)	9.6 (272)		
Boot, back seats folded	Cu. ft (l)	34.1 (967)		
Weights				
Kerb weight	lbs (kg)	2062 (935) – 2172 (985)		
Payload	lbs (kg)	1069 (485) – 959 (435)		
Total weight	lbs (kg)	3131 (1420)		
Roof rack	max. lbs (kg)	110 (50)		
Trailer, without brakes	max. lbs (kg)	882 (400)		
Trailer, with brakes	max. lbs (kg)	1985 (900)		
Performance				
Max. speed	mph (km/h)	90 (145)	93 (150)	93 (150)
Acceleration, 0-62mph/0-100km/h - sec.		17	14	14
Fuel consumption (Official UK Govt.):		mpg (l/100 km)		
at 56mph (90 km/h)		48.7 (5.8)	51.4 (5.5)	51.4 (5.5)
at 75mph (120 km/h)		36.7 (7.7)	37.7 (7.5)	37.7 (7.5)
in urban traffic		34.0 (8.3)	38.2 (7.4)	38.2 (7.4)
External turning circle, between kerbs	ft (m)	34' 3" (10.45)		

Škoda Felicia		Estate	
		LXi / LXi Plus / GLXi	
		68bhp	
Body			
Type	Estate, 5-door, 5-seat, steel monocoque		
Air drag coefficient	Cd	0.355	
Area	cw. A m ²	0.685	
Exterior dimensions			
Length	(ft) (mm)	13' 9" (4205)	
Width	(ft) (mm)	5' 4" (1635)	
Height	(ft) (mm)	4' 7" (1415)	
Wheelbase	(ft) (mm)	8' (2450)	
Ground clearance	(ft) (mm)	4" (110)	
Front track	(ft) (mm)	4' 8" (1420)	
Rear track	(ft) (mm)	4' 6" (1380)	
Interior dimensions			
Front seat width	(ft) (mm)	4' 8" (1420)	
Back seat width	(ft) (mm)	4' 7" (1398)	
Height at front seats	(ft) (mm)	3' 2" (967)	
Height at back seats	(ft) (mm)	3' 1" (932)	
Boot volume	Cu. ft (l)	16 (447)	
Boot, back seats folded	Cu. ft (l)	48 (1366)	
Weights			
Kerb weight	lbs (kg)	2149 (975) – 2259 (1025)	
Payload	lbs (kg)	1069 (485) – 959 (435)	
Total weight	lbs (kg)	3218 (1460)	
Roof rack	max. lbs (kg)	110 (50)	
Trailer, without brakes	max. lbs (kg)	882 (400)	
Trailer, with brakes	max. lbs (kg)	1985 (900)	
Performance			
Max. speed	mph (km/h)	90 (145)	
Acceleration, 0-62mph/0-100 km/h	sec	17	
Fuel consumption: (Official UK Govt.):		mpg (l/100 km)	
at 56mph (90 km/h)		53.3 (5.3)	
at 75mph (120 km/h)		39.2 (7.2)	
in urban traffic		39.8 (7.1)	
External turning circle	ft (m)	34' 3" (10.45)	

Even more reason to change your mind.

ŠKODA DEALER NETWORK

One thing we won't be changing is an excellent dealer network. There are more than 230 Škoda dealers throughout the UK, so there's bound to be one near you. Which means faster service when you need it, help and advice whenever it's called for, including ready stocks of spare parts, and a guarantee to provide absolutely any part normally within just 24 hours.

ŠKODA WARRANTY

The new Škoda Felicia is covered by a full two year warranty, regardless of mileage, against defects in material or manufacture. The paintwork is also covered by this warranty, and the bodywork has a full 6 year anti-perforation warranty with no annual inspection charges.

ŠKODA ASSISTANCE

In addition to your Škoda Felicia warranty there is a special two year Assistance programme which you can access through a dedicated Freephone number. This includes Roadside Assistance, Home Start Relay Recovery and Relay Plus.

ŠKODA MOTABILITY

People in receipt of the Higher Mobility Component of the Disability Living Allowance receive special help from Škoda. Preferential prices or low cost contract hire are available through your local approved Motability Dealer. For full details contact your local Dealer. Should you wish to receive a brochure, telephone 0345 745 745.

ŠKODA INSURANCE

Škoda Felicia owners can obtain motor insurance at attractive rates from the Volkswagen Insurance Company (GB) Ltd., a company which has been specialising in UK motor insurance for over 30 years.

The service includes a 24-Hour Accident Helpline, financial help with legal representation and a free recovery service for uninsured losses.

Check our Quotations Hotline on 0345 616161, or ask your Škoda dealer for details.

ŠKODA FINANCE

Volkswagen Financial Services has an enormous amount of experience in helping people buy cars in the UK. We can now put this at your disposal when buying a Škoda, and help you find just the right financial package to suit your monthly budget. Simply ask your Škoda dealer which package is right for you.

ŠKODA SOLUTIONS

Driving a new Škoda has never been easier. From the outset, the amount you pay per month, the level of initial deposit, and even the Final Payment (Guaranteed Minimum Value) - which can help protect you against future car resale risks - can be decided by you at the start of the contract.

Flexibility and peace of mind is at the heart of Škoda Solutions. You decide the model which meets your needs, and choose your ideal 'tailored package'.

Ask your local Škoda dealer for details.

Škoda Solutions - The new way to drive a Škoda.

Recommended Retail Price List - 1st March 1996

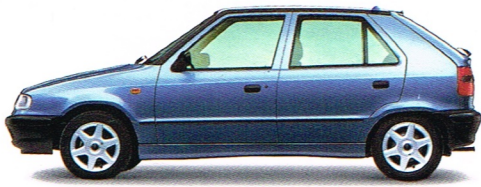
All prices quoted are inclusive of V.A.T., all delivery charges, number plates, petrol and are applicable to Northern Ireland only. Prices are exclusive of road fund licence.



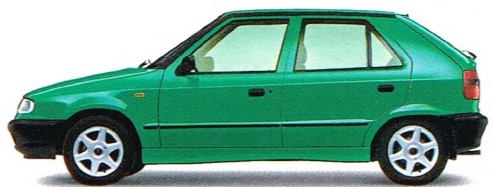
The New Felicia Range	Hatch	Estate
LX	£6,275.00	—
LXi	£6,685.00	£7,685.00 <small>AVAILABLE FROM APRIL 1996</small>
LXi Plus	£7,150.00	£8,150.00
GLXi	£8,023.00	£9,023.00
Options: Metallic Paint	£195.00	£195.00



The information in this brochure referring to specification, design, equipment, material and external appearance relates to the time at which this brochure was printed. Whilst every effort is made to ensure its accuracy, the information in this brochure is not binding and is subject to alteration. Please confirm exact specifications and prices with your Škoda dealer who will be notified of any specification changes as they occur. Edition: Northern Ireland March 1996.



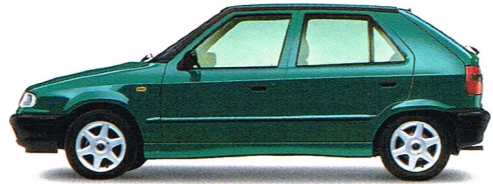
ice blue metallic - 94 51



atlantic green - 52 60



arctic blue - 46 20



dark green metallic - 95 90



royal blue - 47 10



pearl white - 10 88



romantic red - 82 90



silver metallic - 91 03



purple metallic - 98 80



brilliant black - 19 99



Volkswagen Group

We've changed the car. Can you change your mind?

Telephone 0345 745 745

Škoda UK, Garamonde Drive, Great Monks St, Wymbush, Milton Keynes MK8 8NZ