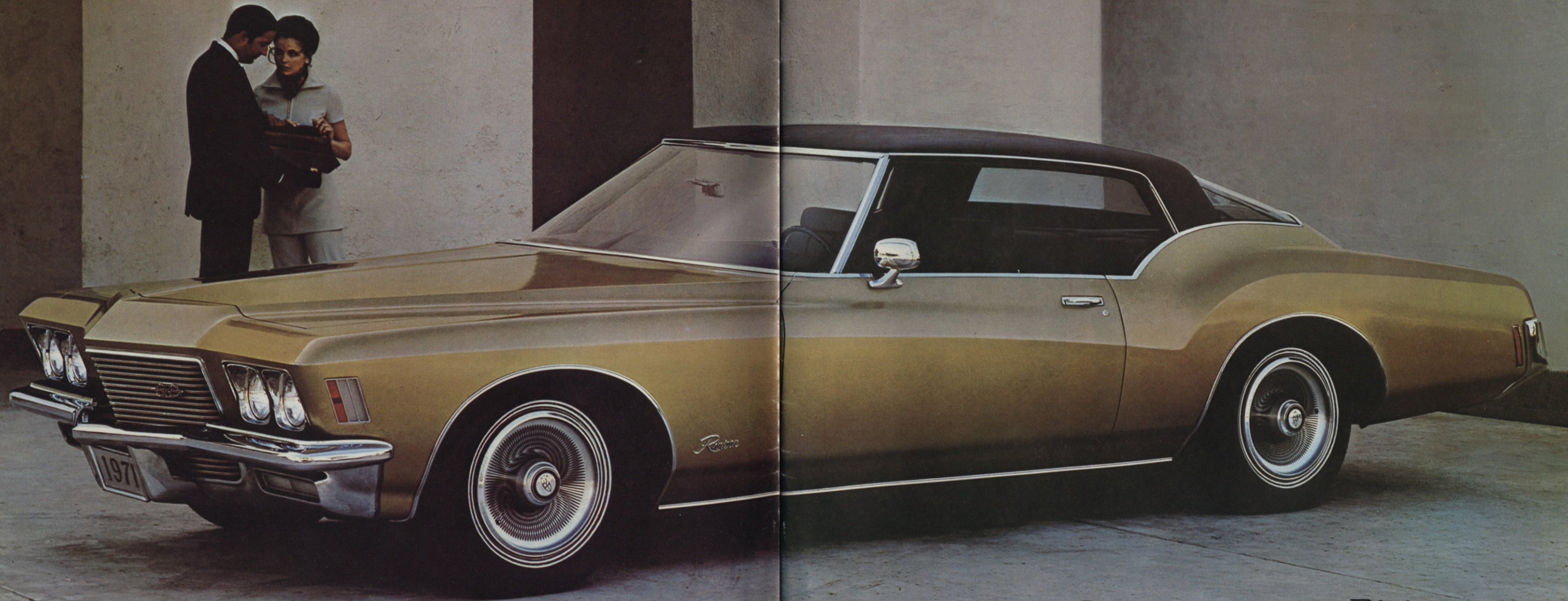


Riviera  
Electra 225  
Estate Wagon  
Centurion  
LeSabre  
GS  
SportWagon  
Skylark

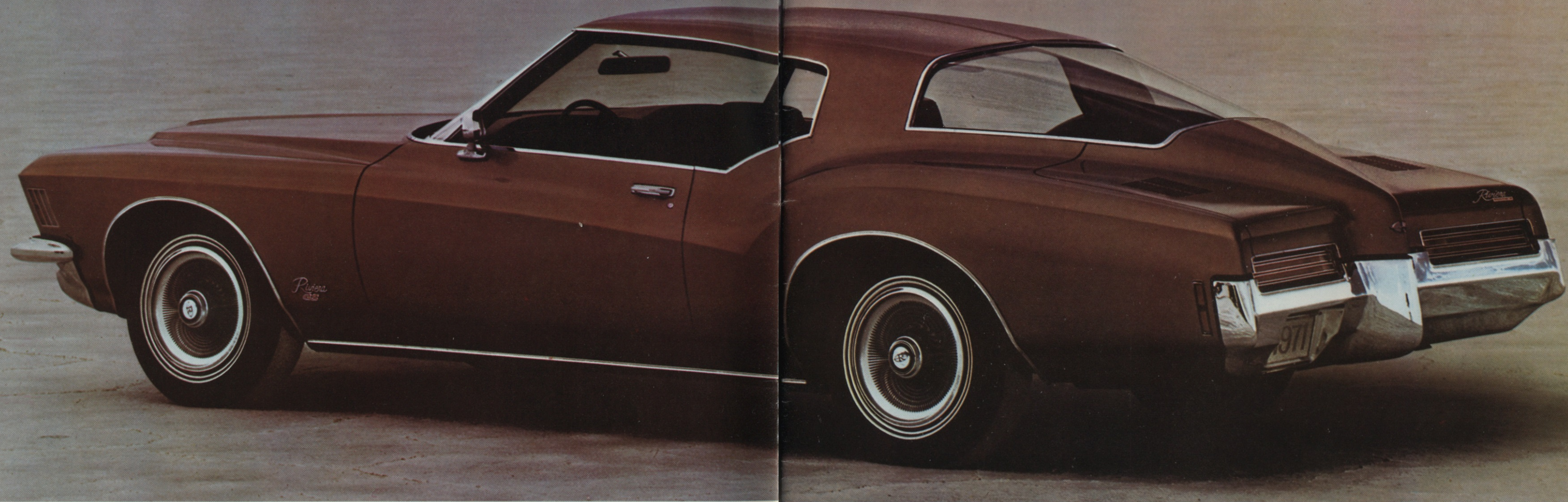
# Buick 1971

Introducing a new set of values.





Riviera



Riviera GS

## Riviera

**Inside the Riviera:** Discover new. Get inside: sit down; sink in. Relaxation is yours. The 1971 Riviera. A unique experience in unmatched comfort. Totally new dimensions in driving pleasure. Front head room: 37.7 inches; Rear head room: 37.0 inches; Front leg room: 42.7 inches; Rear leg room: 35.6 inches; Front shoulder room: 64.3 inches; Rear shoulder room: 59.3 inches.

(Note: Riviera interior and exterior specifications are approximations in inches.)

### Outside the Riviera:

Aerodynamic styling. Longer. Wider. Daring new design. The 1971 Riviera is motion-

sculptured giving an image of movement even when standing still. In a word: excitement. Length: 217.4 inches; Width: 79.9 inches; Height: 54.0 inches; Wheelbase: 122.0 inches.

### Riviera Performance.

Something to believe in. Unexcelled craftsmanship. Engineering excellence. Standard engine: 455-4 V8; Compression Ratio: 8.4:1; Displacement: 455 C.I.D.; Carburetion: 4-barrel; Fuel: Regular.

Transmission: 3-speed Turbo Hydra-matic 400 Automatic Transmission.

Rear Axle Ratio: Riviera: 2.93; Riviera GS: 3.42 with Positive Traction. Please consult your Buick dealer on available ratios.



**Riviera Comfort.** Luxurious. Convenient. Features you'd expect to find only in Riviera. Yours to enjoy. New Full-Flow ventilation system, heater and defroster; recessed windshield wiper blades; new full-foam front contoured seats; deep pile carpeting, front and rear; front door operated interior light; electric clock; inside trunk light; smoking set; front and rear ash trays; new, more convenient seat belt assembly; cushioned head restraints; luxurious new interior appointments; newly designed instrument cluster for easier reading and serviceability; increased visibility, front and rear; inside hood lock release;

increased trunk capacity; outside rear view mirror; arm rests; front folding seat back latches; anti-theft key warning buzzer; anti-theft steering column lock plus many more comfort and convenience features your Buick dealer will be pleased to discuss with you.

### Riviera Special Features.

Features to make your motoring more pleasurable; New AccuDrive II with Forward Mounted Steering Gear and Linkage; 3-speed Turbo Hydra-matic 400 Automatic Transmission; self-adjusting power front disc brakes with composite cast iron rear drum brakes; dual exhausts with

stainless steel wrapped mufflers; Full-Flow oil filter; semi-closed cooling system; 6,000 mile lubricated front suspension; Delcotron generator with integral voltage regulator; rear view mirror mounted on inside windshield; time modulated carburetor choke control; side guard beam construction in the doors for added protection; new evaporative emission control system; four jet windshield washers.

**The available Riviera Gran Sport.** A high performance 455-4 V8 engine that runs on low lead gas. Includes a specially calibrated 3-speed Turbo Hydra-matic 400 Auto-



Some of the equipment shown or described is available at extra cost.

matic Transmission. Heavy-duty suspension. Positive Traction differential (3.42 axle ratio standard). "Riviera GS" monogram on front fender. Bias belted white wall tires are standard. For information on MaxTrac, Buick's exclusive traction control system, please refer to opposite page.

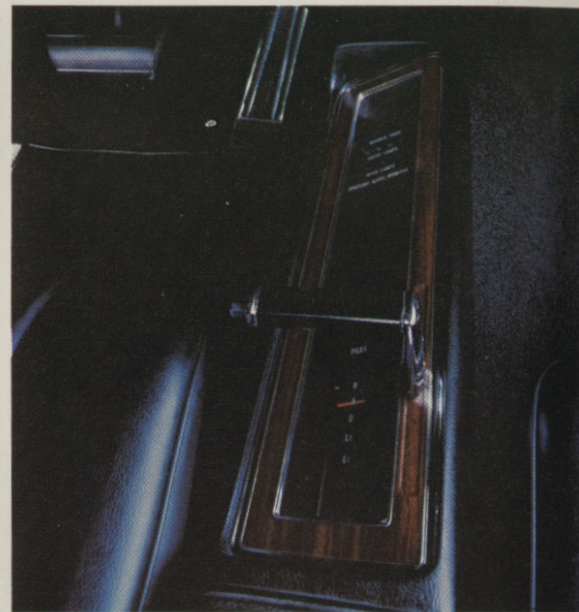
**Riviera Interior Seating Appointments.** The look... The feel... The touch of luxury. 1. The Madrid-Grain Expanded-Vinyl Bucket Seats shown below are available for you to order in Pearl White, Rosewood or Black. They're one of three Custom Trim options available in Riviera for 1971. 2. Riviera's unique console option, that you can order, is slanted toward the driver for ease of operation and maximum

instrument visibility. 3. The Riviera instrument panel design is based upon the control centre concept. The curving line of the panel surrounds the driver making all instruments visible at a glance. 4. The second trim option you can order is the Expanded Madrid-Grain-Vinyl Strato Notch-Back Seats, available in Green, Sandalwood, Saddle or Black. This is one of several Custom Trim options you

can order. Your Buick dealer or salesman will be pleased to acquaint you with the full selection of available interior options. 5. Expanded Roulet-Grain Vinyl or Madrid-Grain-Vinyl Bucket Seats are also available in Black or Sandalwood. 6. Expanded Roulet-Grain-Vinyl and Madrid-Grain-Vinyl Bench Seats are available on the Riviera in Sandalwood or Black.



1.



2.



3.



4.



5.

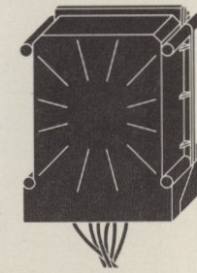


6.

Some of the equipment shown or described is available at extra cost.

## MaxTrac

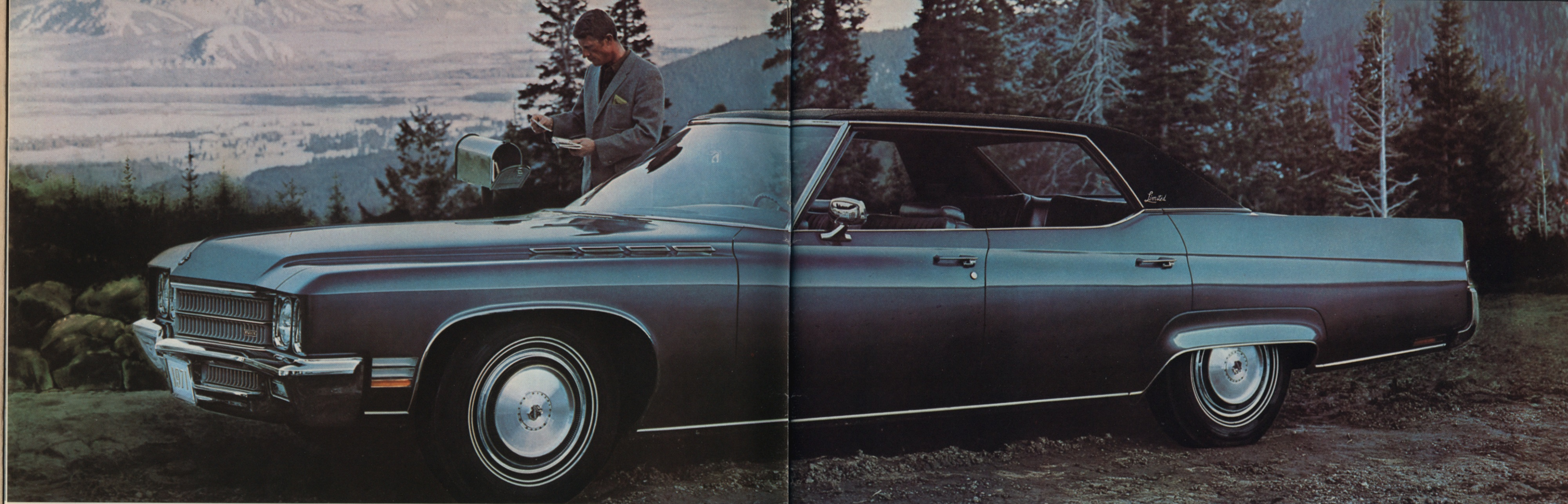
**Buick's all-weather traction control system.** Buick pioneered AccuDrive. A Buick Exclusive in 1970. Now Buick introduces Max-



Trac. Another Buick exclusive for 1971 available on the all-new Buick Riviera. MaxTrac is a revolutionary new power control system designed to greatly assist directional control on slick surfaces. The tendency for rear end swerve is reduced and the car moves at a steady pace. MaxTrac is composed of two speed sensors—one located at the front wheel hub to gauge the front wheel speed; one located in the transmission to monitor rear wheel speed. A miniature transistorized computer actually compares the

speeds of the front and rear wheels. When the beginning of rear wheel spin is detected, the computer modulates the engine ignition to provide controlled power to the rear wheels to take full advantage of all of the available traction on the road surface. The day of computerized driving is here. And only Buick has it. MaxTrac is available on the 1971 Riviera. It will be available at a somewhat later date on all Buick upper series models. MaxTrac. Another part of the 1971 Buick new set of values. Something to believe in.





Electra 225 Custom Limited Four-Door Hardtop

## Electra Limited

**Inside the Electra.** Discover luxury. Spacious elegance. Yours to enjoy. The 1971 Electra 225 Custom Limited and Electra 225 (pictured on the next spread) share the same spacious interior dimensions.

**Coupes:**

Front head room: 38.8 inches;  
Rear head room: 38.1 inches;  
Front leg room: 42.6 inches;  
Rear leg room: 40.5 inches;  
Front shoulder room: 64.3 inches;  
Rear shoulder room: 61.5 inches.

**4-door Hardtops:**

Front head room: 39.3 inches;  
Rear head room: 38.2 inches;  
Front leg room: 42.6 inches;  
Rear leg room: 40.5 inches;  
Front shoulder room:

64.3 inches;  
Rear shoulder room: 63.4 inches.  
(Note: Interior and exterior dimensions are approximations in inches.)

\*The 1971 Electra 225 Sport Coupe is not shown in this catalog. Your Buick dealer will be pleased to review its availability with you.)

**Outside the Electra.** Classic styling. Distinctive. Electra in every exciting inch. The 1971 Electra 225s are an expression of truly sophisticated luxury automobiles.  
Length: 226.2 inches;  
Width: 79.7 inches;  
Height: 54.4 inches, (54.9 in 4-door hardtop);  
Wheelbase: 127.0 inches.



**Electra Performance.**

Magnificence in motion. Performance to believe in. Yours to command.  
Standard engine: 455-4 V8.  
Compression Ratio: 8.4:1;  
Displacement: 455 C.I.D.;  
Carburetion: 4-barrel;  
Fuel: Regular.

Transmission: 3-speed Turbo Hydra-matic 400 Automatic Transmission.  
Rear Axle Ratio: 2.73. Consult your Buick dealer for information on available ratios.

**Electra Comfort.** Convenience. Unlimited luxury. Comfort is yours in Electra. New Full-Flo ventilation system; custom full-foam front seat cushions; heater and defroster; deluxe steering wheel; electric clock;

interior trunk light; smoking set; rear compartment ash trays; front and rear arm rests; Magic-Mirror exterior finish; side coat hooks; door-operated interior light; plus all the interior appointments you've come to expect from Electra.

**Electra Special Features.**

Consider the features you would like to enjoy in a luxury automobile. Electra has them all. 3-speed Turbo Hydra-matic 400 Automatic Transmission; variable ratio power steering; self-adjusting power front disc brakes with composite cast iron rear drum brakes; 6,000 mile lubed front suspension; Buick's AccuDrive II with forward mounted steering gear and linkage;



Some of the equipment shown or described is available at extra cost.



Electra 225 Sport Coupe

Electra 225 Four-Door Hardtop

direct-acting hydraulic shock absorbers; bias-belted tires; Delcotron generator; Full-Flow oil filter; remote control outside rear view mirror; four-way hazard warning flasher; radio antenna concealed in the windshield; side beam construction in all doors for added protection; safety door latches and hinges; padded, energy absorbing instrument panel; newly designed instrument cluster for easier serviceability; semi-closed cooling system that should never overheat, even with air-conditioning; foam-padded front head restraints; anti-theft key warning buzzer; anti-theft steering column



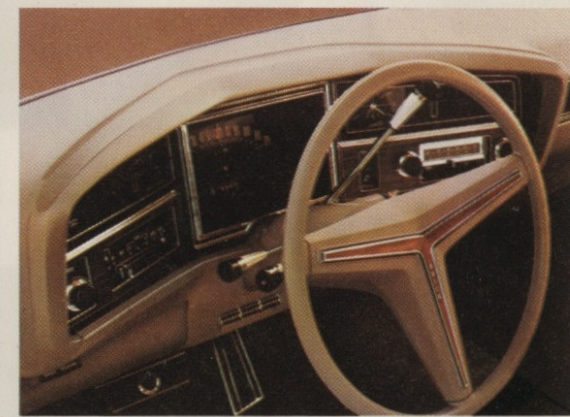
lock; time modulated carburetor choke control for faster starts in any weather; new evaporative emission control system; four jet windshield washers.

**Electra Interior Seating Appointments.** Elegant... deep... rich and comfortable. 1. Keswick Cloth and Madrid-Grain-Vinyl Bench Seats are available on the Electra 225 Custom Limited Hardtop Sedan in Green, Blue, Sandal-

wood or Black. 2. The new 1971 Electra 225 control centre enables the driver to almost instantly operate controls and see instruments and gauges at a glance. 3. Kimmel Cloth-and-Madrid-Grain-Vinyl Bench Seats are available in Green, Blue or Sandalwood on the Electra 225 Sport Coupe and Hardtop Sedan. 4. Beautiful Elk-and-Madrid-Grain-Vinyl Bench Seat is available on the Electra 225 Sport Coupe and Hardtop Sedan in Sandalwood or Black. 5. Keswick Cloth and Madrid-Grain-Vinyl 60/40 Notch Back Seats are available in the Electra 225 Custom Limited Sport Coupe and Hardtop Sedan in Green, Blue or Sandalwood. Elk-Grain Expanded-Vinyl and Madrid-Grain-Vinyl Bench Seat is available in Black on the Electra 225 Custom Limited Hardtop Sedan.



1.



2.



3.



4.



5.

Some of the equipment shown or described is available at extra cost.



## Estate Wagon

### Inside the Estate Wagon.

Wider, more spacious. Increased load area. Stretch-out comfort surrounds you. The luxurious 1971 Buick 4-Door, Two and Three Seat Estate Wagons are truly something to believe in.

### Two-Seat Model:

Front head room: 39.6 inches;  
Rear head room: 39.3 inches;  
Front leg room: 42.6 inches;  
Rear leg room: 39.9 inches;  
Front shoulder room: 64.3 inches;  
Rear shoulder room: 63.3 inches.

### Three-Seat Model:

Front head room: 39.6 inches;  
Rear head room: 39.4 inches;  
Front leg room: 42.6 inches;  
Rear leg room: 37.9 inches;

Front shoulder room: 64.3 inches;  
Rear shoulder room: 63.3 inches.

### Outside the Estate Wagon.

A longer, lower silhouette. Distinctive new grille. Sculpted beauty in every graceful line. The 1971 Buick 4-Door, Two and Three Seat Estate Wagons share the same exterior dimensions: Length: 226.8 inches; Width: 79.7 inches; Height: 57.3 inches; Wheelbase: 127.0 inches. (Note: Estate Wagon interior and exterior dimensions are approximations in inches.)

**Estate Wagon Performance.** Responsive. Eager. Perfor-

Estate Wagon with optional simulated woodgrain panelling



mance to believe in. Standard engine: 455-4 V8; Compression ratio: 8.4:1; Displacement: 455 C.I.D.; Carburetion: 4-barrel; Fuel: Regular. Transmission: Standard: 3-speed manual (column shift mounted). Available: 3-speed Turbo Hydra-matic 400 Automatic Transmission. Rear Axle Ratio: 3-speed manual: 3.42; automatic: 2.93. Consult your Buick dealer for information on available ratios.

### Estate Wagon Comfort.

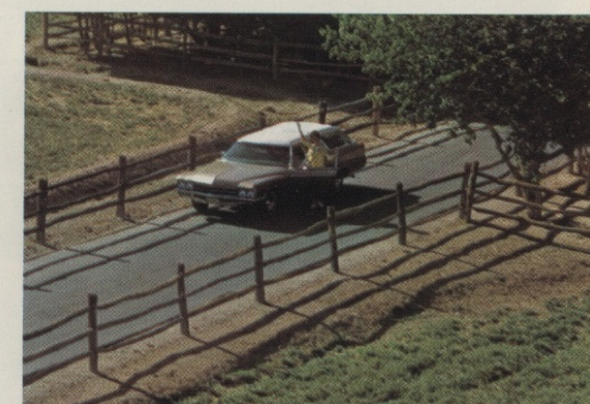
Gracious convenience where it counts. New innovations where they matter. Estate Wagon is a state of comfort. Yours: new Full-Flo ventilation

system; heater and defroster; front door-operated interior light; glove compartment light; smoking set; rear seat ash trays; Magic-Mirror exterior finish; arm rests; front and rear deep pile carpeting; custom interior trims; full-foam front seat cushions in addition to many other comfort features your Buick dealer will be pleased to discuss with you.

### Estate Wagon Special Features.

Special in every respect. Special with Estate Wagon for your very special enjoyment: variable-ratio power steering; 6,000 mile lubed front suspension; bias belted tires; direct-acting hydraulic shock absorbers, front and rear; self-adjusting

power front disc brakes with composite cast iron rear drum brakes; Buick's Accu-Drive II with forward mounted steering gear and linkage; Delcotron generator; Full-Flow oil filter; right and left outside rear view mirrors, four-way hazard warning flasher; radio antenna concealed in the windshield, side guard beam construction in the doors for added protection; safety door latches and hinges; padded energy absorbing instrument panel; newly designed instrument cluster for easier serviceability; semi-closed cooling system that should never overheat, even with air-conditioning; foam padded front head restraints; anti-theft key warning buzzer;



anti-theft steering column lock; time modulated carburetor choke control for faster starts in any weather; four jet windshield washers; new evaporative emission control system.

Some of the equipment shown or described is available at extra cost.

**Estate Wagon Interior Seating Appointments.**

Beautiful...luxurious...and totally comfortable.

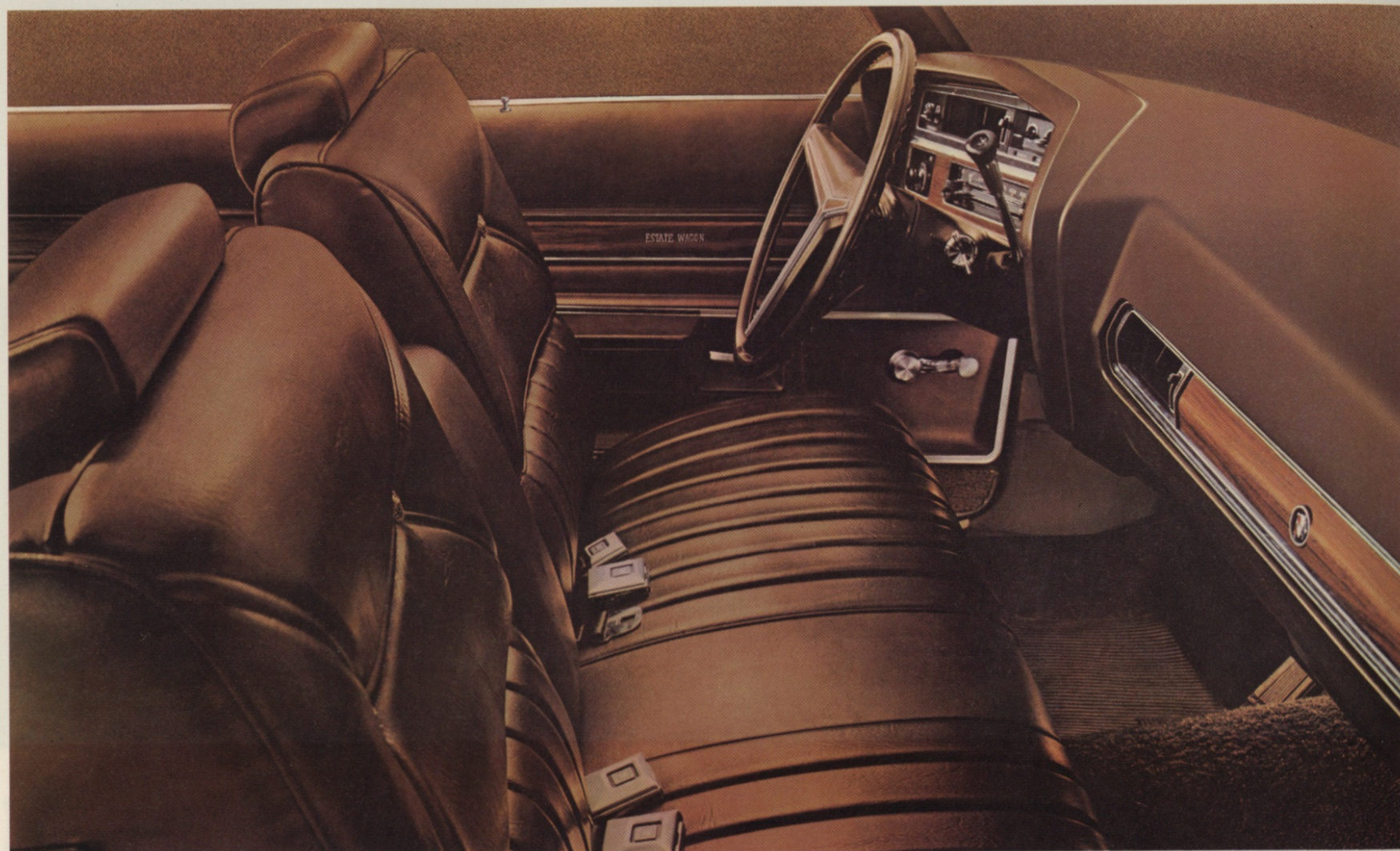
1. Elk-Grain-Expanded-Vinyl and Madrid-Grain-Vinyl Notch Back Seats are available on the Two and Three Seat Estate Wagon in Green or

Saddle. Sandalwood is available on the Three-Seat Estate Wagon model only.

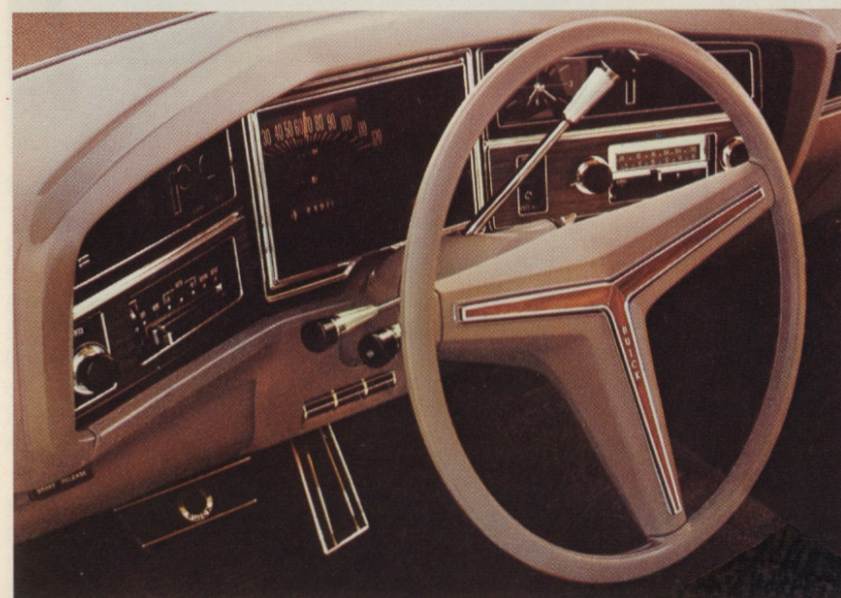
2. The new 1971 Estate Wagon control center enables the driver to almost instantly operate controls and see instru-

ments and gauges at a glance. 3. Elegant Elk-Grain and Madrid-Grain-Vinyl Bench Seats are available on the Two and Three Seat Estate Wagon in Blue, Green, Sandalwood or Saddle.

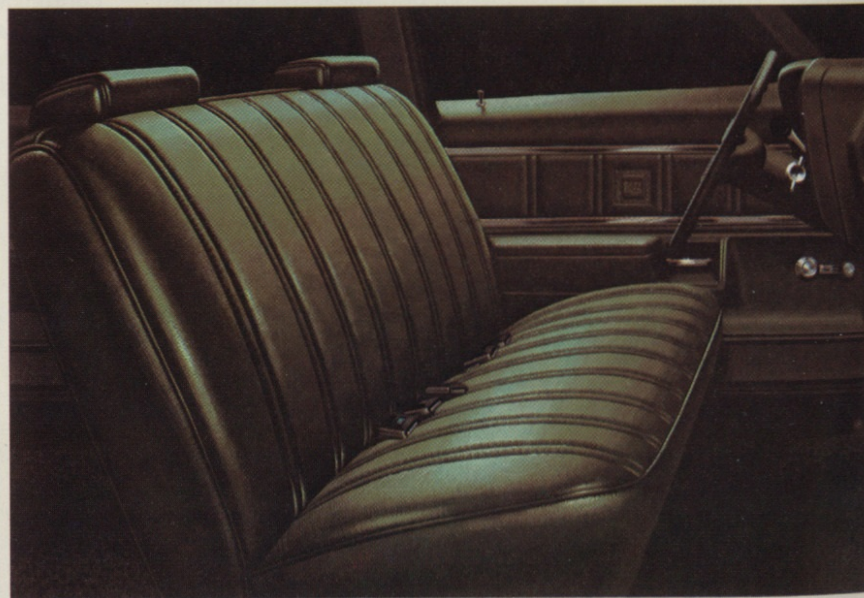
A comfortable fold-away forward-facing rear bench seat is also available on some 1971 Estate Wagon models. Simply specify your interior trim selection when ordering from your Buick dealer.



1.



2.



3.

**Estate Wagon Glide-Away Tailgate.**

Now you see it. Now you don't. The 1971 Estate Wagon features the most advanced tailgate design ever incorporated into station wagon engineering. Imagine this: a tailgate that actually disappears into the roof and under-

body of the car. It's - real. And it's here. In the 1971 Estate Wagon. As standard equipment. The tailgate glass is power-operated on all models and retracts completely into the roof. The tailgate disappears into the underbody. Presto. A unique tailgate as-

sembly that leaves the loading area of the Estate Wagon completely free of obstruction. Operation is quick, efficient and easy. The manually operated Glide-Away Tailgate is standard on the Estate Wagon. The Glide-Away Tailgate is

also available as a power-actuated option if you so desire. Your Buick dealer will be pleased to acquaint you with the Glide-Away Tailgate should you have any questions. Another part of Buick's new set of values.



Some of the equipment shown or described is available at extra cost.





Centurion Sport Coupe

# Centurion

**Inside Centurion.** Look. Feel. Touch. Everything is new. The 1971 Centurion is unique in every exciting innovation and appointment. Comfortable interior dimensions await your pleasure.

**Sport Coupe:**

Front head room: 38.1 inches;  
Rear head room: 37.1 inches;  
Front leg room: 42.6 inches;  
Rear leg room: 35.5 inches;  
Front shoulder room: 64.3 inches;  
Rear shoulder room: 62.2 inches;

**4-Door Hardtop Sedan:**

Front head room: 38.4 inches;  
Rear head room: 37.4 inches;  
Front leg room: 42.6 inches;  
Rear leg room: 38.5 inches;  
Front shoulder room:

64.3 inches;  
Rear shoulder room: 63.3 inches.

**Convertible:**

Front head room: 38.9 inches;  
Rear head room: 38.1 inches;  
Front leg room: 42.6 inches;  
Rear leg room: 35.5 inches;  
Front shoulder room: 64.3 inches;  
Rear shoulder room: 61.7 inches.

**Outside Centurion.** Sleek new profile. Exciting styling. Beautiful from any angle, the Centurion boasts the following exterior dimensions: Length: 220.7 inches; Width: 79.7 inches; Height: 53.5 inches; (Sport Coupe); 53.7 inches; (4-door Sedan); 53.9 inches;

Centurion Four-Door Hardtop



Centurion Sport Coupe



(Convertible); Wheelbase 124.0 inches. (Note: Centurion interior and exterior dimensions are approximations in inches.)

**Centurion Performance.** Sure-footed dependability, reliability. Something to

believe in. Yours to command. Standard engine: 455-4 V8; Compression ratio: 8.4:1; Displacement: 455 C.I.D.; Carburetion: 4-barrel; Fuel: Regular. Available engine: 455-4 (High Performance); dual exhausts. Transmission: Standard: 3-speed manual (column shift mounted). Available: 3-speed Turbo Hydra-matic 400 Automatic Transmission. Rear Axle Ratio: 3-speed manual: 3.42; 3-speed automatic transmission: 2.93. Consult your Buick dealer for information on available ratios.



**Centurion Comfort.** Experience convenience. Comfort. Centurion has an abundance of both: heater and defroster;

Some of the equipment shown or described is available at extra cost.

Full-Flow ventilating system; front door-operated interior light; glove compartment light; smoking set, rear seat ash trays; Magic-Mirror exterior finish; front and rear carpeting; arm rests; deluxe steering wheel; custom interior trims; new more convenient seat belt assembly; new Full-Foam front seats, padded head restraints, newly designed instrument panel for easier reading and serviceability; anti-theft key warning buzzer; anti-theft steering column lock and many more comfort and convenience features your Buick dealer will be pleased to discuss with you.

**Centurion Special Features.**

The features you would expect to find in the Buick Centurion. Enjoy: Buick's AccuDrive II with forward mounted steering gear and linkage; 6,000 mile lubricated front suspension; self-adjusting power front disc brakes with composite cast iron rear drum brakes; bias belted tires; direct-acting hydraulic shock absorbers; Delcotron generator; Full-Flow oil filter; semi-closed cooling system; inside rear view mirror mounted on windshield; time-modulated choke control; new evaporative emission control system; four-way hazard warning flasher; radio antenna concealed in the windshield; newly designed instrument panel for easier reading and serviceability. For additional information on other features available, please consult your Buick dealer.



Centurion Convertible



**Centurion Interior Seating Appointments.** Fabulous fabrics...durable vinyl...rich and comfortable.

1. Elk-Grain Expanded-Vinyl and Madrid-Grain-Vinyl Notch Back Seats on the Centurion Hardtop Sedan and Sport Coupe are available in Green, Sandalwood, Saddle or Black. Elk-Grain Expanded Vinyl and Madrid-Grain-Vinyl Notch Back Seats are available on the Centurion Convertible in Blue, Pearl White, Saddle or Black.
2. Kipling Cloth and Madrid-Grain-Vinyl Notch Back Seat is available on the Centurion Hardtop Sedan in Sandalwood or Black.
3. The new 1971 Centurion control centre enables the driver to almost instantly operate controls and see instruments and gauges at a glance.

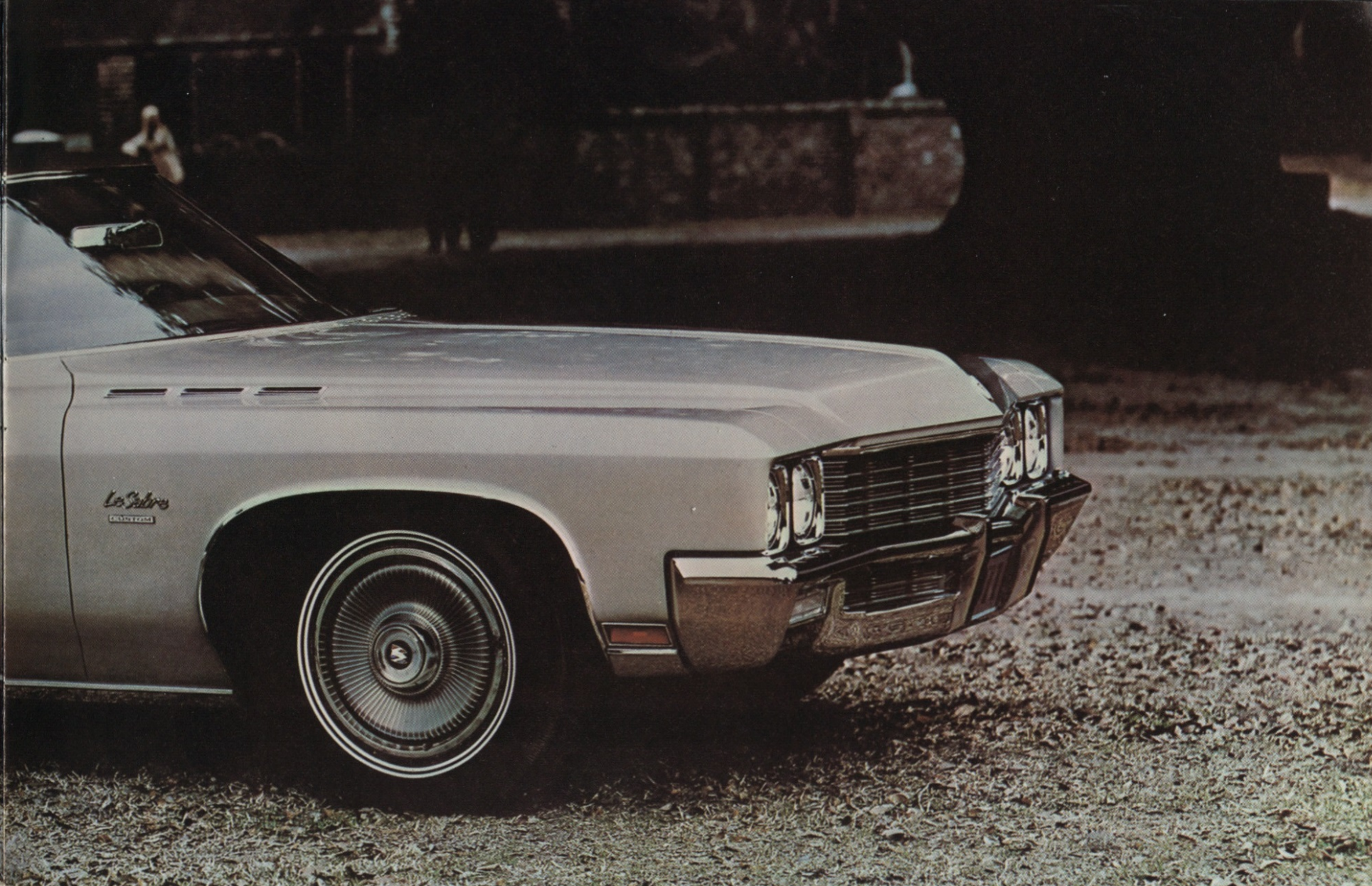
# AccuDrive II

An improved version of Buick's exclusive all-road condition directional stability system. Buick introduced AccuDrive in 1970. It afforded Buick drivers an unheard of degree of handling ease and responsiveness. Now, Buick engineers have developed a major new refinement in suspension that gives an almost unbelievable degree of new handling ease and responsiveness for 1971. We've called it AccuDrive II. You'll call it revolutionary. An all new chassis has been designed

to accommodate the completely new styling concepts of Riviera, LeSabre, Centurion, Electra 225 and the Estate Wagon. The major improvement in 1971 on these models is that the steering gear and linkage have been moved ahead of the front wheels. This arrangement greatly improves directional stability and provides unsurpassed handling ease and response. Buick's AccuDrive II. Another part of Buick's New Set of Values. Something to believe in.



Some of the equipment shown or described is available at extra cost.



LeSabre Custom Sport Coupe

# LeSabre

**Inside the LeSabre.** Step in. Stretch out. Uncommon comfort is yours. The 1971 LeSabres boast the following spacious and comfortable interior dimensions:

**Sport Coupe:**  
 Front head room: 38.1 inches;  
 Rear head room: 37.1 inches;  
 Front leg room: 42.6 inches;  
 Rear leg room: 35.5 inches;  
 Front shoulder room: 64.4 inches;  
 Rear shoulder room: 62.2 inches.

**4-Door Sedan:**  
 Front head room: 38.9 inches;  
 Rear head room: 38.0 inches;  
 Front leg room: 42.6 inches;  
 Rear leg room: 38.5 inches;  
 Front shoulder room: 64.4 inches;

Rear shoulder room: 63.5 inches.

**Convertible:**  
**(LeSabre Custom only)**  
 Front head room: 38.9 inches;  
 Rear head room: 38.0 inches;  
 Front leg room: 42.6 inches;  
 Rear leg room: 35.5 inches;  
 Front shoulder room: 64.3 inches;  
 Rear shoulder room: 61.7 inches.

**4-Door Hardtop Sedan:**  
 Front head room: 38.9 inches;  
 Rear head room: 38.0 inches;  
 Front leg room: 42.6 inches;  
 Rear leg room: 38.5 inches;  
 Front shoulder room: 64.3 inches;  
 Rear shoulder room: 63.5 inches.  
 (Note: The LeSabre exterior

LeSabre Custom Sport Coupe



LeSabre Custom Convertible



and interior dimensions are approximations in inches).

**Outside the LeSabre.** Striking new styling. Longer. Lower. The totally new 1971 LeSabres are a masterpiece of distinctive styling and design. Dimensions are shared by both models. Length: 220.7 inches; Width: 79.7 inches; Height:

53.6 inches (Sport Coupe)  
 54.4 inches (4-Door Sedan)  
 53.9 inches (Convertible) 53.8 inches (4-Door Hardtop Sedan); Wheelbase: 124.0 inches.

**LeSabre Performance.** Performance to believe in. Dependability. Reliability. Standard engine: 350-2 V8;



Some of the equipment shown or described is available at extra cost.

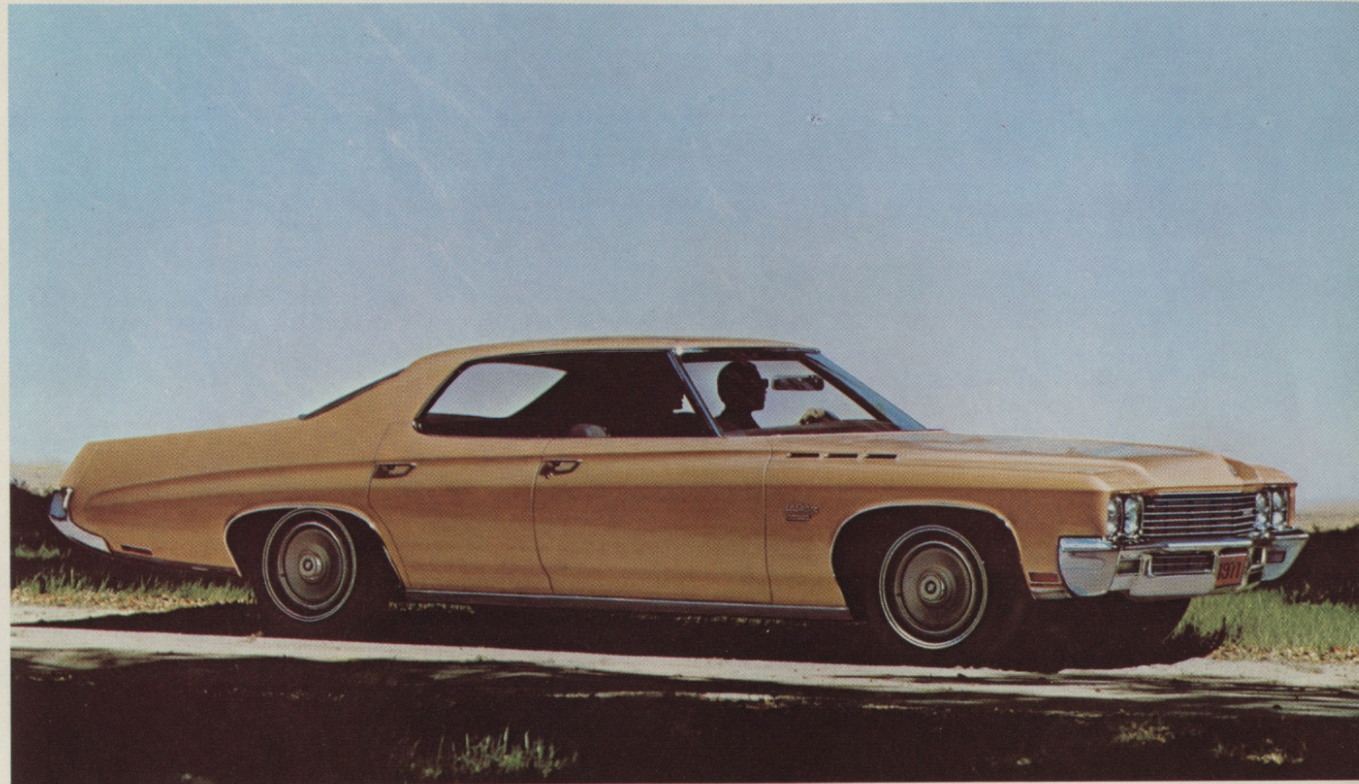
Compression ratio: 8.4:1; Displacement: 350 C.I.D.; Carburetion: 2-barrel; Fuel: regular.

Available engines: (1) 350-4 V8; Compression ratio: 8.4:1; Displacement: 350 C.I.D.; Carburetion: 4-barrel; Fuel: regular; (2) 455-4 V8; Compression ratio: 8.4:1; Displacement: 455 C.I.D.; Carburetion: 4-barrel; Fuel: regular. Transmissions: Standard: 3-speed manual (column shift mounted). Available: 3-speed Turbo-Hydramatic 350 Automatic; 3-speed Turbo-Hydramatic 400 Automatic (with 455 engine option only). Rear Axle Ratio: 3-speed manual; 3.42; Turbo-Hydramatic 350 Automatic: 3.08; Turbo-Hydramatic 400 Automatic: 2.93. Consult your Buick dealer for information on available ratios.

**LeSabre Comfort.** Relaxation. Enjoyment. Yours to command. LeSabre comfort features: Full-Flo ventilating system; heater and defroster; front operated door-interior light; glove compartment light; rear seat ash trays; arm rests; front and rear carpeting; Magic-Mirror exterior for less owner maintenance; new ease of exit and entry; seat belts; luxurious new interior appointments; newly designed instrument panel cluster for easier servicing and, like all Buick 1971 models, probably just about the most comfortable and convenient car you've had the opportunity to experience. Add this: increased visibility both front and rear, inside hood lock release, larger trunk capacity and foam-filled front seats... and you've got an automobile you can not only live with, but in. As it should be.

**LeSabre Special Features.** The features you want: power front disc brakes with composite cast iron rear drum brakes; variable ratio power steering; Buick's AccuDrive II with Forward Steering gear and linkage; direct-acting hydraulic shock absorbers; bias belted tires; Delcotron generator; Full-Flow oil filter; semi-closed cooling system; 6,000 mile lubricated front suspension system and variable

ratio parking brake; side beam construction in the doors for added protection; inside rear view mirror mounted on the windshield; time-modulated carburetor choke control for faster starts in any weather; new evaporative control system; four jet windshield washer.



LeSabre Custom Four-Door Hardtop



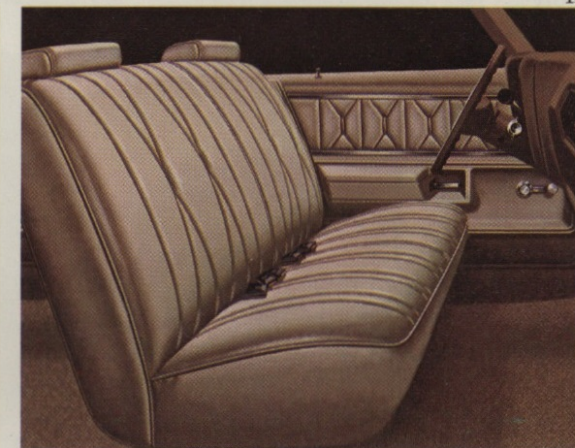
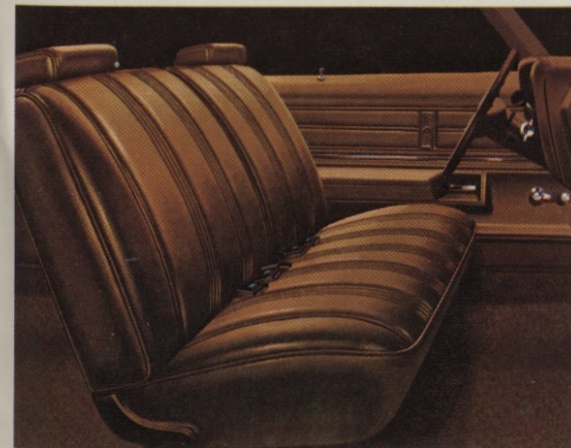
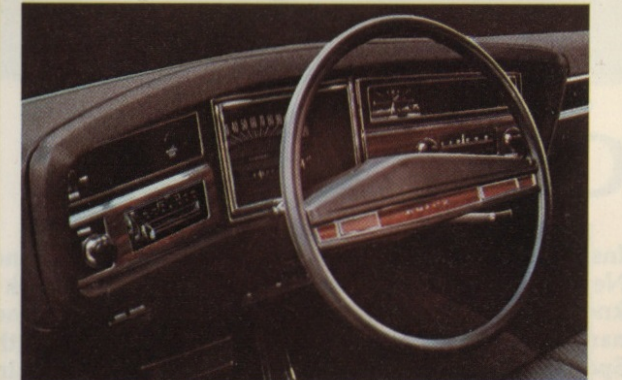
LeSabre Custom Four-Door Sedan

**LeSabre Interior Seating Appointments.** Beauty...style... living room comfort. 1. Krefeld Cloth and Madrid-Grain-Vinyl Bench Seats are available on the LeSabre Custom Hardtop Sedan, Sport Coupe and Four-Door Sedan in Green, Blue or Sandalwood.

2. Madrid-Grain All-Vinyl Bench Seats are available on the LeSabre Hardtop Sedan, Sport Coupe and Four-Door Sedan in Saddle or Black. 3. Elk-Grain and Madrid-Grain-Vinyl Bench Seats are available on the LeSabre Custom Hardtop Sedan, Sport Coupe and Four-Door Sedan in Green, Blue or Sandalwood.

Coupe and Four-Door Sedan in Green, Sandalwood, Saddle or Black. Elk-Grain and Madrid-Grain-Vinyl Bench Seat is available on the LeSabre Custom Convertible in Sandalwood, Saddle or Black. 4. Kahara Cloth and Madrid-Grain-Vinyl Bench Seats are

available on the LeSabre Hardtop Sedan, Sport Coupe and Four-Door Sedan in Green, Blue, Sandalwood or Black.





GS Sport Coupe

## GS

**Inside GS.** New isn't just new. New is GS. Get inside. You'll know what we mean by the name GS. It stands for Gran Sport. Interior dimensions are as follows: **Sport Coupe:** Front head room: 37.9 inches; Rear head room: 36.3 inches; Front leg room: 41.6 inches; Rear leg room: 32.3 inches; Front shoulder room: 58.5 inches; Rear shoulder room: 57.1 inches. **Convertible:** Front head room: 38.7 inches; Rear head room: 37.0 inches; Front leg room: 41.6 inches; Rear leg room: 32.3 inches; Front shoulder room: 58.5 inches; Rear shoulder room: 47.8 inches. **Outside GS.** Sleek. Slim. Sensational. Design to settle the argument about perfor-

mance car styling once and for all. Look. You'll look again. The GS exterior dimensions are as follows: Length: 203.2 inches; Width: 77.3 inches; Height: 53.5 inches (Sport Coupe) 53.9 inches (convertible); Wheelbase: 112.0 inches. (Note: The GS interior and exterior specifications are approximations in inches.) **GS Performance.** Accelerate. Power to please or pass. Performance to believe in. Standard Engine: 350-4 V8; Compression ratio: 8.4:1; Displacement: 350 C.I.D.; Carburetion: 4-barrel; Fuel: regular. **GS Available Engines:** (1) 455-4 V8; Compression ratio: 8.4:1; Displacement: 455



GS Convertible

C.I.D.; Carburetion: 4-barrel; Fuel: regular; (2) 455-4 V8 Stage 1. Compression ratio: 8.4:1; Displacement: 455 C.I.D.; Carburetion: 4-barrel; Fuel: regular. **The GS Transmissions:** Standard: 3-speed manual (column shift mounted); Available: 3-speed Turbo-Hydramatic Automatic Transmission (column or console shift mounted, Bucket seats required with console); 4-speed Manual (floor mounted shift). **GS Rear Axle Ratios:** 3-speed, 4-speed Manual: on Automatic Transmissions: 3.08; 455-4 V8 Engine: Automatic: 3.08; Performance (Automatic): 3.42. Manual: 3.42; 455-4 V8 Stage

1 Engine: Automatic: 3.42\*; Manual: 3.42. (\*Positive Traction Standard). **GS Comfort.** What would you expect? A full complement of convenience and comfort features. Enjoy: A selection of interior seating appointments including bucket, (eyes right) bench and notch back seat styles, depending on models; comfort-flo ventilating system; heater and defroster; front operated door interior light; rear seat ash trays; arm rests; Magic-Mirror exterior finish; front and rear carpeting; new, more convenient seat belt assembly; padded head restraints; instrument panel designed for easier reading and serviceability; anti-theft

key warning buzzer; anti-theft steering column lock plus many more. **GS Special Features.** Features to get excited about. All standard in GS. Get excited: dual exhausts; functional hood air scoops; Full-Flow oil filter; semi-closed cooling system; Delcotron generator; 14 inch wheels; heavy duty springs; shock absorbers and stabilizer bar; 6,000 mile front lubricated suspension; composite cast iron drum brakes.



Some of the equipment shown or described is available at extra cost.



## The Buick SportWagon

**Inside The SportWagon.** Wide open spaces. Roomy comfort. It's there. And it's waiting. The 1971 Buick SportWagon interior dimensions will bear this out after one pleasant excursion inside.

Front head room: 38.4 inches;  
Rear head room: 38.3 inches;  
Front leg room: 42.6 inches;  
Rear leg room: 34.6 inches;  
Front shoulder room: 58.3 inches;  
Rear shoulder room: 57.4 inches.

**Outside The SportWagon.** A feast for the eye. Slim. Trim. Beautiful. Distinctively Buick. Obviously SportWagon. The 1971 Buick SportWagon exterior specifications tell you at a glance that here is a wagon

waiting for your enjoyment: Length: 212.7 inches; Width: 77.3 inches; Height: 54.8 inches; Wheelbase: 116.0 inches. (Note: SportWagon interior and exterior dimensions are approximations in inches).

**SportWagon Performance.** Swift. Sure. Powerful. Uncommon reliability. Dependability. Something to believe in.

Standard Engine: 350-2 V8;  
Compression ratio: 8.4:1;  
Displacement: 350 C.I.D.;  
Carburetion: 2-barrel;  
Fuel: Regular.  
The Available Engine: 350.4 V8;  
Compression ratio: 8.4:1;  
Displacement: 350 C.I.D.;  
Carburetion: 4-barrel;



Fuel: Regular.  
Transmissions: Standard: 3-speed manual (column shift); Available 3-speed Turbo-Hydramatic 350; Rear Axle Ratios: 3-speed manual: 3.08; automatic: 3.08. Please consult your Buick dealer for information on available ratios.

**SportWagon Comfort.** Fingertip convenience. Comfort. Deep...durable vinyl...beautiful...rich and colorful and comfortable. Textured Madrid-Grain Vinyl Bench Seats (left) are available in the SportWagon in Green, Blue or Sandalwood. Enjoy: heater and defroster; cigarette lighter; front door-operated interior light; front

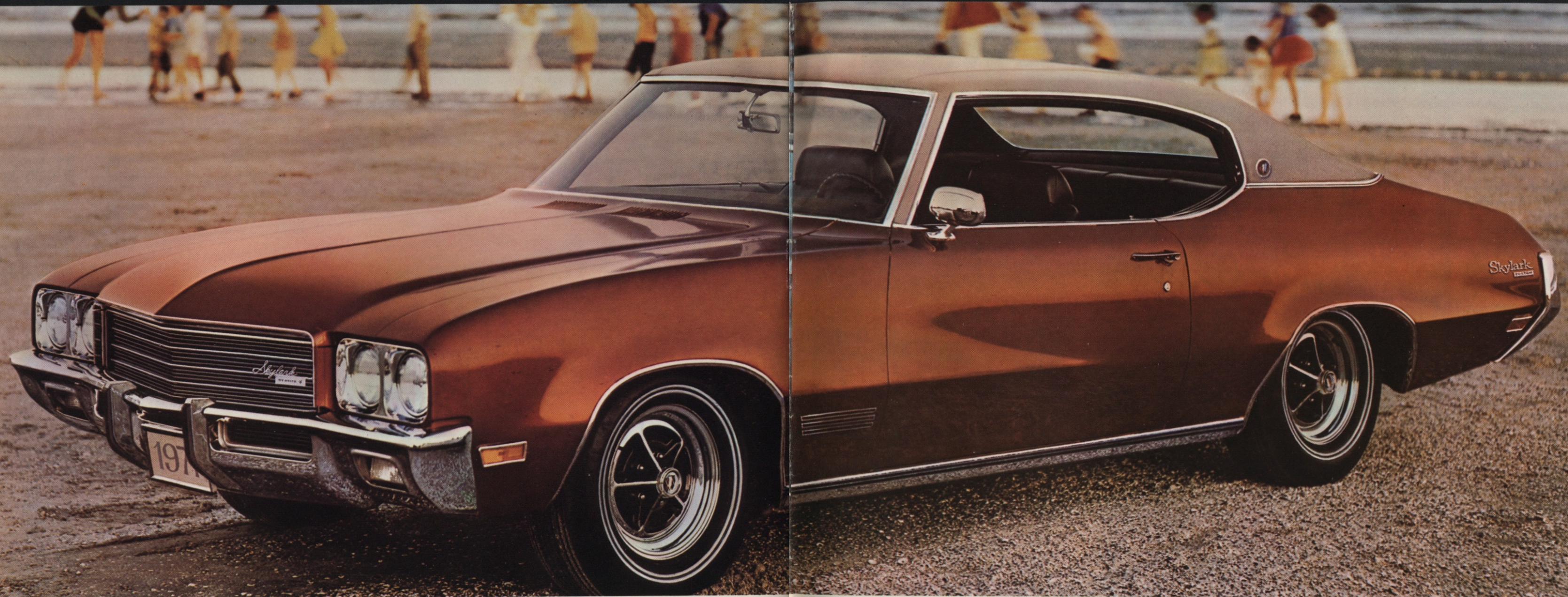
and rear ash trays; Magic-Mirror exterior finish; front arm rests; padded head restraints and dual-action tailgate.

**SportWagon Special Features.** Features that make the Buick SportWagon something to believe in: 3-speed manual transmission fully-synchronized in all forward gears; power disc brakes; Full-Flow oil filter; Delcotron generator; semi-closed cooling system; outside rear view mirror; four-way hazard warning flasher; concealed windshield antenna; safety door latches and hinges; anti-theft key warning buzzer; anti-theft steering column locks; side guard beam construction in

the doors for added protection plus many more features your Buick dealer will be pleased to point out to you.

**SportWagon Dual Action Tailgate.** It's a door. It's a gate. Better yet, it's both. It's Buick's Two-Way Door-Gate and it's standard equipment on the new 1971 Buick SportWagon. You'll see how easy loading anything can be. Just open... and swing out. Window rolls up or down at your convenience. Ask your Buick dealer for a demonstration of this unique feature.





Skylark Custom Sport Coupe

# Skylark

**Inside Skylark Custom and Skylark.** Deep seated. Spacious. Comfortable. All seven models in the Skylark and Skylark Custom series are designed for people who like their comfort in style. Each model has slightly different interior dimensions, but those of the Skylark Sport Coupe are typical:  
 Front head room: 37.9 inches;  
 Rear head room: 36.3 inches;  
 Front leg room: 41.3 inches;  
 Rear leg room: 32.4 inches;  
 (it's up to 34.8 in the 4-Door models);  
 Front shoulder room: 58.5 inches;  
 Rear shoulder room: 57.1 inches.

**Outside Skylark Custom and Skylark.** Beauty isn't just a

word. It's Skylark. Styled for second looks, the Skylark and Skylark Custom sport the following exterior dimensions: Wheelbase of all 2-Door models is 112 inches; on 4-Door models it's 116 inches. Length: 203.2 inches (2-Doors); 207.2 inches (4-Doors); Width: 77.3 inches (all models); Height: Skylark Sport Coupe, 53.3 inches; Skylark Sedan—54.0 inches. Skylark Custom Sport Coupe—53.5 inches. Both 4-Door Sedans—54.2 inches; Skylark Custom 4-Door Hardtop—54.3 inches. Skylark Custom Convertible—53.9 inches.

(Note: Skylark interior and exterior dimensions are approximations in inches.)

Skylark Custom Convertible



Skylark Custom Four-Door Hardtop



**Skylark Custom and Skylark Performance.** Dependable. Reliable. Performance to believe in.  
 Standard Engine: (Skylark) 250 Six Cylinder.  
 Compression ratio: 8.4:1;  
 Displacement: 250 C.I.D.;  
 Carburetion: 1-barrel;  
 Fuel: Regular.  
 Standard Engine: (Skylark Custom) 350-2 V8.  
 Compression ratio: 8.4:1;  
 Displacement: 350 C.I.D.;  
 Carburetion: 2-barrel;  
 Fuel: regular.  
 Available Engines: (Skylark) (1) 350-2 V8; Compression ratio: 8.4:1; Displacement: 350 C.I.D.; Carburetion: 2-barrel; Fuel: regular; (2) 350-4 V8; Compression ratio: 8.4:1;

Displacement: 350 C.I.D.;  
 Carburetion: 4-barrel; Fuel regular.  
 (Skylark Custom) 350-4 V8;  
 Compression ratio: 8.4:1;  
 Displacement: 350 C.I.D.;  
 Carburetion: 4-barrel;  
 Fuel: regular.  
 Transmissions: Standard: (Skylark) 3-speed manual

(Column Shift): Available: 3-speed Turbo-Hydramatic 350 Automatic (column shift and console mounted shift available with bucket seat option). Standard: (Skylark Custom) 3-speed manual (column shift); Available: Turbo-Hydramatic 350 Automatic Transmission (column shift and console mounted shift available with bucket seat option.) Rear Axle Ratios: (Skylark) 3-speed Manual: 3.08 (250-1, 6 cyl.); 3.08 (350-2, 8 cyl.); Automatic: 3.08 (250-1, 6 cyl.); 2.56 (350-2, 8 cyl.); 2.73 (350-4, 8 cyl.). (Skylark Custom) 3-Speed Manual: 3.08; Automatic: 2.56 (350-2) 2.73 (350-4). Please consult your Buick dealer for information on available ratios.

**Comfort.** Carefree convenience. Comfort features you've come to expect in Skylark.

**Skylark Custom:** Comfort-Flo ventilating system; heater and defroster; Magic-Mirror exterior finish; deluxe steering wheel; cigarette lighter; ash trays, front and rear; glove compartment light; arm rests, front and rear; carpeting; front door operated interior light; seat belts; cushioned head restraints and a host of other features your Buick dealer will be pleased to discuss with you.

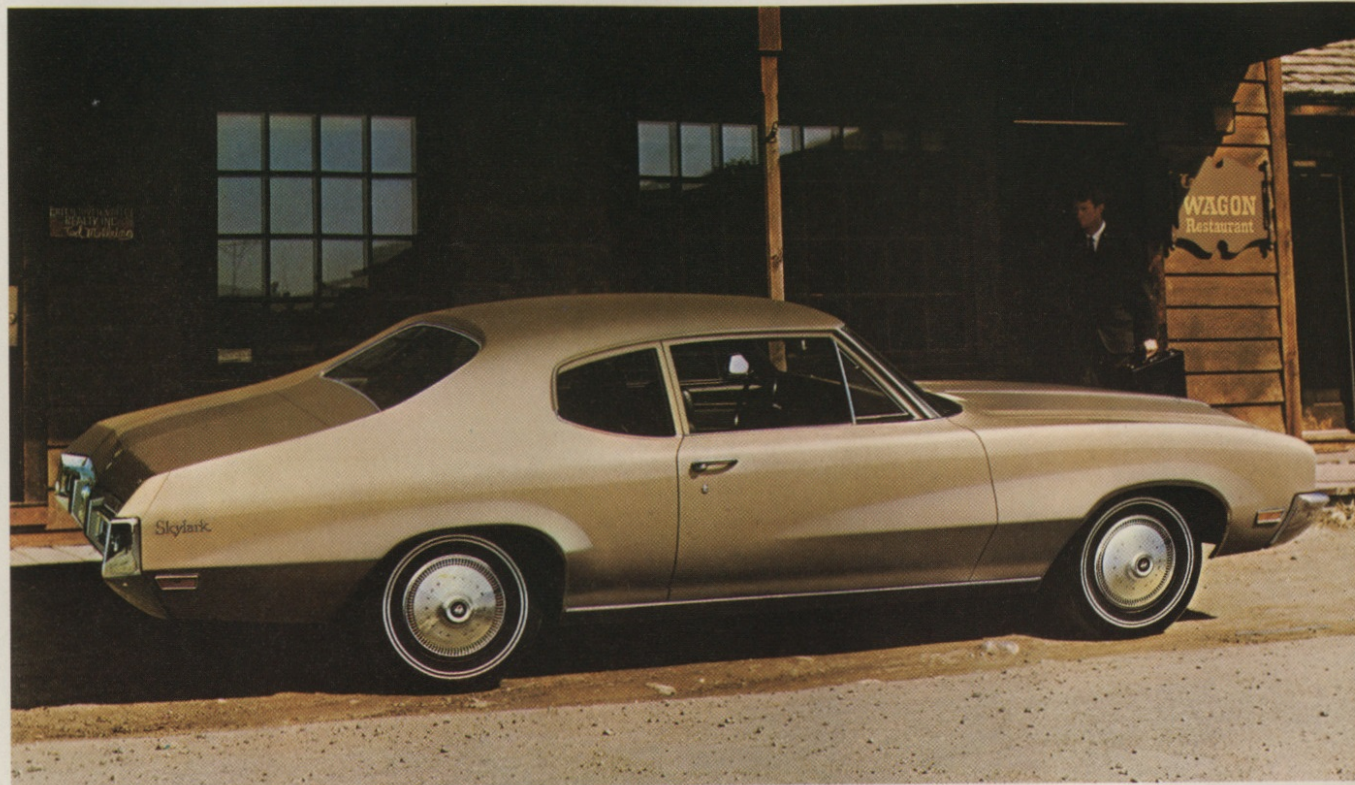
**Skylark:** Front ash tray; heater and defroster; step-on parking brake; Magic-Mirror exterior finish; padded head restraints. Please consult your Buick dealer for additional information on Skylark comfort and convenience features.



**Skylark Special Features.** Features to make your motoring more pleasurable. All standard. Enjoy: Skylark and Skylark Custom: Self-adjusting brakes; gross

lining area 158.1 sq. in.; 6,000 mile front lubed suspension system; bias belted tires; independent ball-joint front suspension; direct-acting hydraulic shock absorbers;

Delcotron generator; Full-Flow oil filter; semi-closed cooling system. For further Skylark and Skylark Custom special feature information, consult your Buick dealer.



Skylark Coupe



Skylark Four-Door Sedan

**Skylark & Skylark Custom Interior Seating Appointments.** Beautiful fabrics...rich vinyls...elegance to enjoy. 1. Kelan Cloth and Madrid-Grain-Vinyl Bench Seats are available in the Skylark Custom Sport Coupe, Hardtop Sedan and Four-Door Sedan

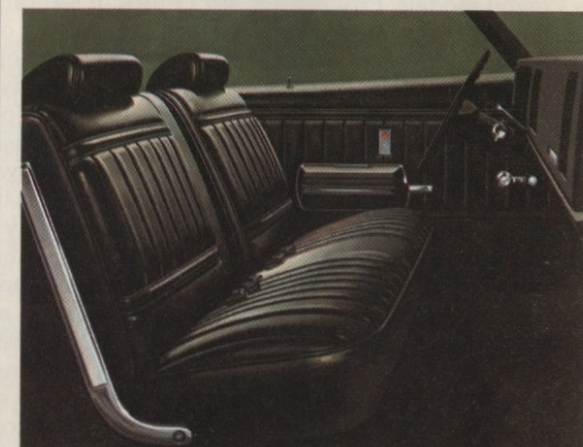
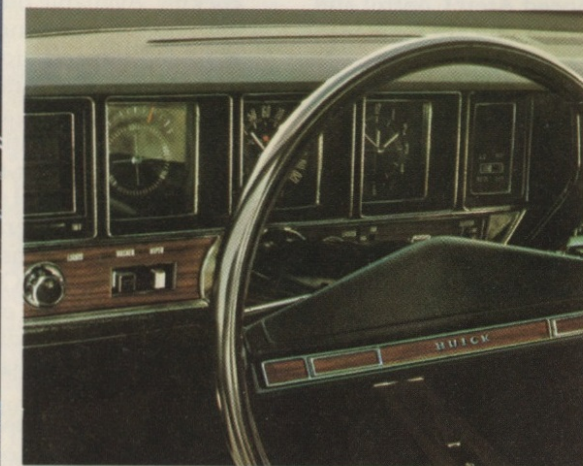
in Green, Blue or Sandalwood. 2. All-Vinyl Bucket Seats are available on the Skylark Custom Sport Coupe in Black, Pearl White or Saddle. 3. All-Vinyl Notch Back Seats are available in Green, Sandalwood, Black or Saddle on the Skylark and Skylark Custom

Sport Coupe and Skylark Custom Hardtop Sedan. All-Vinyl Notch Back Seats are available in the Skylark Custom convertible in Green, Pearl White or Saddle. 4. Kahara Cloth and Madrid-Grain-Vinyl Bench Seats are available on the Skylark Two-

Door Coupe, Sport Coupe and Four-Door Sedan in Green, Blue or Sandalwood. 5. Roulet-Grain Expanded Vinyl and Madrid-Grain-Vinyl Bench Seats are available in the Skylark Custom Convertible and the Skylark 4-Door Sedan in Sandalwood or Black.



1.



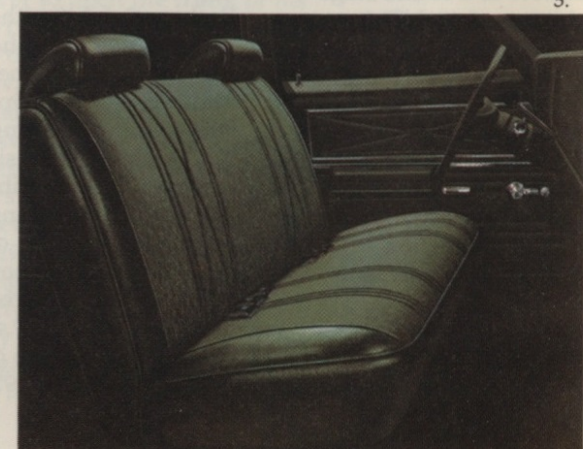
5.



2.



3.



4.

Some of the equipment shown or described is available at extra cost.



# Options and Accessories

1. Speed Alert Control. Simply adjust the lever to your desired speed and cruise along. Should you exceed the speed desired, a buzzer automatically sounds an alert and you simply reduce acceleration. And, if you're taking a trip and want to know the exact mileage, you'll want the Trip Odometer. Just set it and you'll know how many miles you've traveled. The Speed Alert Control and Trip Odometer are available in the 1971 Riviera, Electra, Centurion, Estate Wagon, LeSabre and LeSabre Custom.

2. Buick's seven-position tilt steering wheel will add that much more comfort to your 1971 Buick. It affords easier driver entry as well as increased driver comfort. It's standard on the Buick Riviera and available on most other 1971 Buicks.

3. Bumper guards are available on all 1971 Buicks except Riviera, SportWagon and Estate Wagon models. Protective side moldings, made of chrome with vinyl inserts are available on all models except Riviera and help protect the beautiful Magic-Mirror finish on your 1971 Buick.

4. To make night driving and turning more convenient and effortless, you can order front cornering lights for all Riviera, Electra, Centurion, Estate Wagon and LeSabre models.

5 & 6. The sound of music. Full and rich. Any 1971 Buick can double as a sound stage the addition of AM/FM stereo radio and/or Buick's combination four-speaker and tape player system. Available with both front and rear seat speaker systems, these superb accoustical instruments are available on the 1971 Riviera, Electra 225, Centurion, LeSabre and Estate Wagon models.

7. Just a touch of your finger and you've got perfect seat positioning. Six-Way Power Seats are available on all

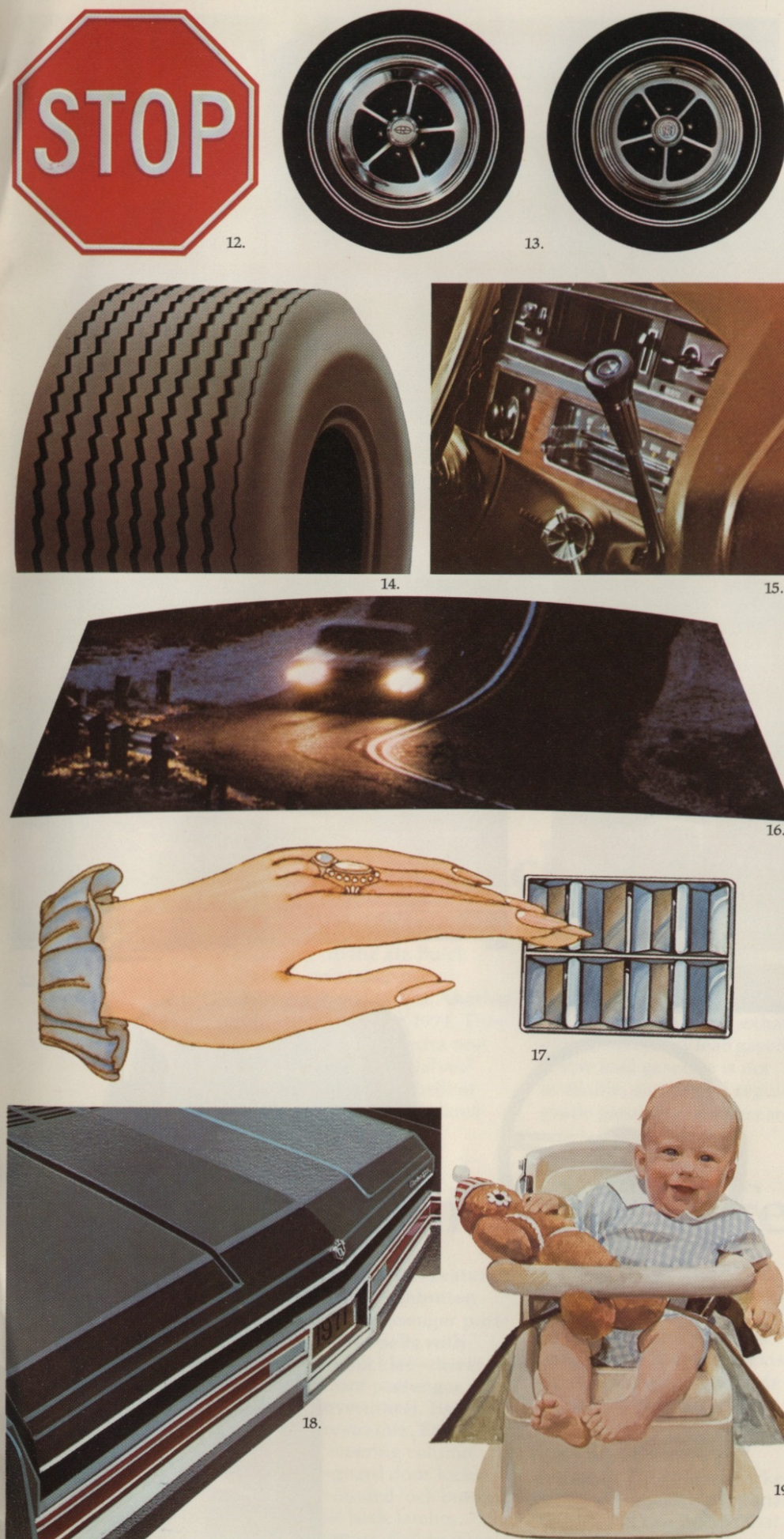
LeSabre, Centurion, Estate Wagons, Electra 225 and Riviera models equipped with bench seats other than 60/40 designs. Four-Way Power Seats are also available on most 1971 Buicks.

8. Beautiful and functional, the center console for Skylark Sport Coupes, GS and the 1971 Riviera gives your new Buick the flair of an airplane cockpit. Available only with bucket seats and a floor-mounted transmission.

9. You can order Automatic Climate Control on any full-size Buick. Automatic Climate Control's, think-for-itself temperature control system, will keep the temperature of your 1971 Buick constant on a year-around basis. Or, should you prefer, you can order the comfort of Air Conditioning. It's available on most 1971 Buicks.

10. Add the distinctive look and feel of a Vinyl Roof to your 1971 Buick. It's another one of the many luxury options available that will set your new Buick apart from any other car.

11. If you'd like to "personalize" your 1971 Buick GS, you'll want one of two special GSX packages to make your new GS individually yours: Package 1: GSX without Spoilers. Includes body side stripes, hood paint, emblems, painted headlamp bezels, black stripe rocker moldings and you can select from six exterior colors with compatible interior combinations. Package 2: GSX with Spoilers. Includes emblems, hood paint, painted headlamp bezels, body space side stripes, black stripe rocker moldings and you can select from six exterior colors with compatible color interior combinations. Should you desire, you can order instrument gauges, sport mirrors, hood tachometer, front spoiler and body color rear spoiler with either package or individually for you new 1971 Buick GS.



12. Meet our stoppers for 1971. You can order power brakes, disc or drum on GS, Skylark, and Skylark Custom models. Power disc brakes are standard equipment on all 1971 upper series Buicks and SportWagon. Very easy on the right leg. Both drum or disc systems provide superb stopping power.

13. Five-spoked chrome-plated wheels are a must for anyone who wants to give his 1971 Buick the look and flair of a thoroughbred sportster. They're available on most 1971 Buick models.

14. If you enjoy extra handling ease, tight cornering and road hugging traction, you'll want to order Buick's Super-Wide Oval Tires (G60 x 15). They are available on the 1971 GS.

15. You can wash your windshield in one easy motion. Just push the button located in the end of the shift lever on all upper series 1971 Buick models. It provides an automatic "on-off" wash/wiper cycle and a "wipe-on-demand" convenience.

16. This is how your rear window should and can be with Buick's Rear-Window Defogger. It clears the rear window of mist or fog and is available on all 1971 Buicks except convertible models.

17. Flick. At the touch of your finger, windows are down and out of sight. Power windows are another desirable luxury item you can order on 1971 Buicks. There's also a power tailgate window available for the SportWagon.

18. So convenient on a rainy day or any day. The Electric trunk release enables the driver to open the trunk of his 1971 Buick without ever leaving the car. This handy option is available on many 1971 Buick models.

19. Make each and every mile more secure for your youngsters by ordering the Child Safety Seat that's available on all 1971 Buick models. It's designed for children up to thirty pounds and folds for easy convenient storage in the luggage compartment when not in use.

20. How do you haul just about any load and keep your 1971 Buick on an even plane? It's easy. Just equip it with Buick's Automatic Level Control. It's available on many Buick models. For full information of Buick Trailer Towing Packages and the ride and handling packages, please consult your Buick dealer.

21. Electric operated door locks are available on all models for 1971. You'll want to order them for their convenience as well as the added security they'll provide.

22. A chromed luggage rack adds to the load carrying capacity of the 1971 Buick Estate Wagon or SportWagon, making it handy wherever you go.



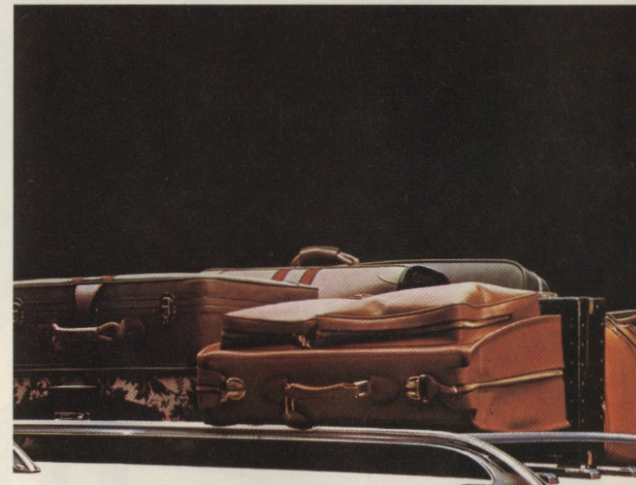
20.

23. Dress up the interior of your new Buick with Buick's special sport steering wheel. It's attractive, casual and sporty. Another item to individualize your driving pleasure.

24. You can squeeze a honk with Buick's new rim-mounted horn control. It's available on all 1971 Buicks and enables you to sound the horn by simply squeezing the steering wheel rim. And if you're especially sports minded, you'll want to order Buick's special Rallye Steering Wheel (not shown) for your Buick GS. And to dress up the interior of any 1971 Buick, an attractive Deluxe Steering Wheel is available.

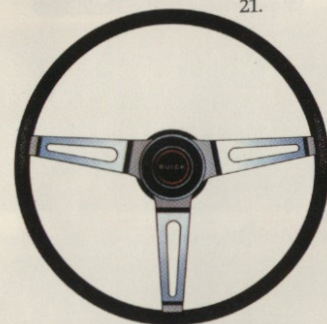


21.



22.

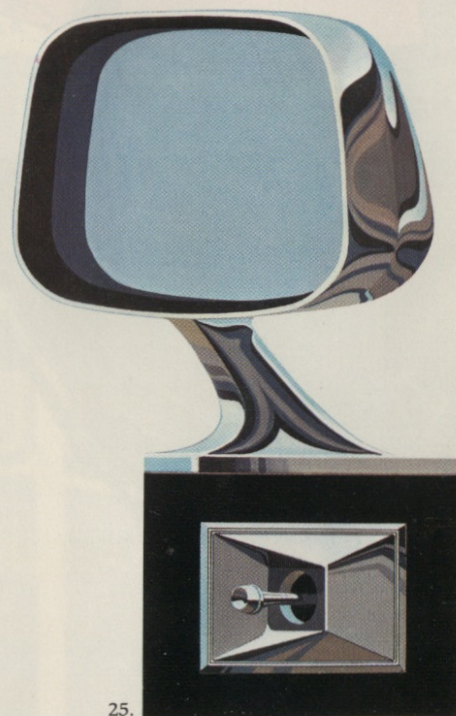
25. Buick's Remote Control Outside Mirror adjusts easily from the interior of the car enabling the driver to adjust his view to the rear with a simple flick of the finger. It's available on all 1971 Buick models.



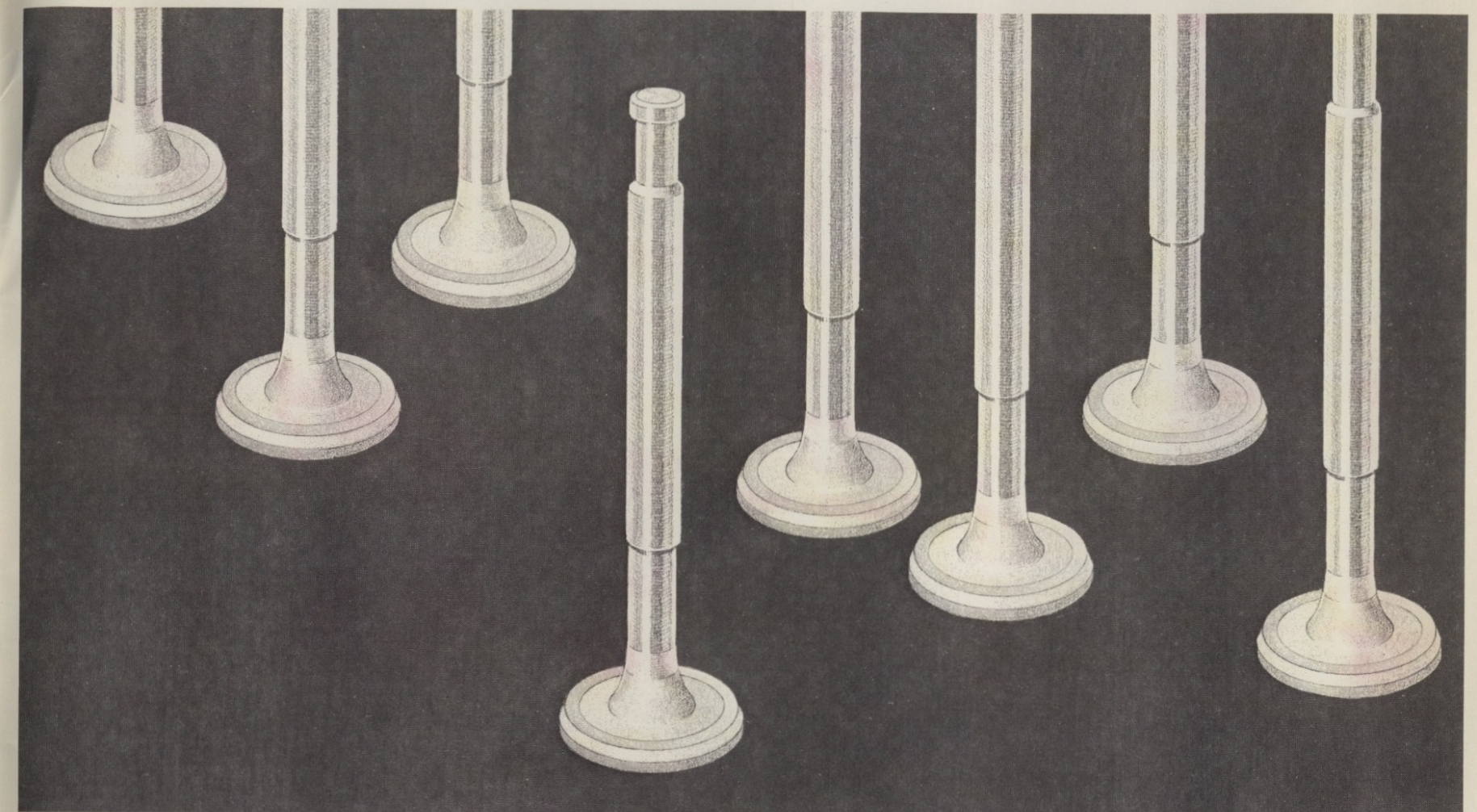
23.



24.



25.



## Buick's Exclusive nickel-plated Valves

**Eliminates corrosion while cleaning up the air.** Buick introduces nickel-plated engine exhaust valves. Another Buick exclusive for 1971. They are included at no extra cost. Why nickel-plated valves? There are several excellent reasons. First, nickel-plated

valves help eliminate corrosion when using low lead fuel. For 1971, all Buick engines have been designed to operate efficiently with lower exhaust emissions on low lead gasolines. If low lead gasoline is not available, any leaded regular grade gasoline with Research

Octane Number of 91 or higher may be used. Secondly, nickel-plating makes for smoother engine operation and longer valve life. And thirdly, since the introduction of low lead gasoline, Buick V8 engines have been specifically designed to accommodate this

new kind of fuel, thus helping to cut down on engine wear while helping to clean up the air without sacrificing performance. Another part of Buick's new set values. Something to believe in.

## 1971 Buick Safety Features

**Occupant Protection Features:** Seat belts with pushbutton buckles for all passenger positions. Shoulder belts with pushbutton buckles—driver and right front passenger (except convertibles). Two front seat head restraints. Energy-absorbing steering column. Passenger-guard door locks forward-mounted lock buttons. Folding seat back latches. Safety arm rests. Safety door

latches. Energy-absorbing padded instrument panel and front and intermediate seat back tops. Thick laminated windshield. Padded sun visors. Safety steering wheel. Side-guard beam construction.

**Accident Prevention Features:** Side marker lamps and reflectors (front side marker lamps flash with directional signal). Parking lamps that illuminate with headlamps.

Four-way hazard warning flasher. Backup lights. Lane change feature in direction signal control. Windshield defrosters, washers and dual speed wipers. Wide view inside day/night mirror (vinyl edged, shatter resistant glass and deflecting support). Outside rear view mirror. Dual master cylinder brake system with warning light. Dual action safety hood latches. Low-glare

instrument panel top, inside windshield moldings, wiper arms and blades, and steering wheel metallic surfaces. Safety wheel rim. Self-adjusting brakes and corrosion resistant brake lines.

**Anti-Theft Equipment:** Anti-theft ignition key warning buzzer. Anti-theft steering column lock. Visible vehicle identification. Tamper resistant odometer with telltale feature.

# Specifications

	SKYLARK	SKYLARK CUSTOM	GS	SPORTWAGON	LE SABRE	LE SABRE CUSTOM	CENTURION	ESTATE WAGON	ELECTRA 225 & CUSTOM	RIVIERA
Body Style	Coupe Sport Coupe 4-dr. Sedan —	Sport Coupe Convertible Hardtop Sedan 4-dr. Sedan	Sport Coupe Convertible — —	2-Seat — — —	Sport Coupe Hardtop Sedan 4-dr. Sedan —	Sport Coupe Convertible Hardtop Sedan 4-dr. Sedan	Sport Coupe Convertible Hardtop Sedan —	2-Seat 3-Seat — —	Sport Coupe Hardtop Sedan — —	Sport Coupe — — —
Engines	Standard Six Standard V8 Optional	250-1 — 350-2 350-4	— — 350-4 455-4 455-4 Stage I	— — 350-2 350-4 —	— — 350-2 350-4 455-4	— — 350-2 350-4 455-4	— — 455-4 455-4 —	— — 455-4 — —	— — 455-4 — —	— — 455-4 — —
Transmissions	Standard Optional	3-spd. manual Hydra-matic —	3-spd. manual Hydra-matic —	3-spd. manual 4-spd. manual Hydra-matic —	3-spd. manual Hydra-matic —	3-spd. manual Hydra-matic —	3-spd. manual Hydra-matic —	3-spd. manual Hydra-matic —	Hydra-matic — —	Hydra-matic — —
Brakes (dia.)	Front Rear Power Gross Area	9.5 Drum 9.5 Drum Optional 158.1 sq. in.	9.5 Drum 9.5 Drum Optional 158.1 sq. in.	9.5 Drum 9.5 Drum Optional 158.1 sq. in.	11.0 in. Disc 9.5 Drum Standard 158.1 sq. in.	11.8 in. Disc 12.0 in. Drum Standard 117.0 sq. in.	11.8 in. Disc 11.0 in. Drum Standard 117.0 sq. in.	11.8 in. Disc 12.0 in. Drum Standard 125.1 sq. in.	11.8 in. Disc 11.0 in. Drum Standard 117.0 sq. in.	11.8 in. Disc 11.0 in. Drum Standard 117.0 sq. in.
Steering Ratio	Std. overall Power-variable	33.0:1 18.7:1-16.1:1	33.0:1 18.7:1-16.1:1	33.0:1 18.7:1-16.1:1	33.0:1 17.6:1-14.3:1	— 17.6:1-14.3:1	— 16.5:1-14.5:1	— 16.1:1-13.1:1	— 16.5:1-14.5:1	— 16.5:1-14.5:1
Turning Diameter (ft.)	curb-to-curb	40.9	41.2	40.9	41.2	NA	NA	NA	45.0	NA
Energizer	Standard 6 cyl. 8 cyl. Optional	45 amp. hr. 61 amp. hr. 70 amp. hr.	— 61 amp. hr. 70 amp. hr.	— 61 amp. hr. 70 amp. hr.	— 61 amp. hr. 70 amp. hr.	— 61 amp. hr. 70 amp. hr.	— 61 amp. hr. 70 amp. hr.	— 70 amp. hr. —	— 70 amp. hr. —	— 70 amp. hr. —
Suspension		Full Coil	Full Coil	Full Coil	Full Coil	Full Coil	Full Coil	Full Coil	F.—Coil R.—Leaf	Full Coil
Frame		Perimeter	Perimeter	Perimeter	Perimeter	Perimeter	Perimeter	Perimeter	Perimeter	Perimeter
Wheelbase	2-dr. 4-dr.	112.0 in. 116.0 in.	112.0 in. 116.0 in.	112.0 in. —	— 116.0 in.	124.0 in. 124.0 in.	124.0 in. 124.0 in.	124.0 in. 127.0 in.	— 127.0 in.	122.0 in. —
Length (overall)	2-dr. 4-dr.	203.2 in. 207.2 in.	203.2 in. 207.2 in.	203.2 in. —	— 212.73 in.	220.7 in. 220.7 in.	220.7 in. 220.7 in.	220.7 in. 220.7 in.	— 226.82 in.	226.2 in. 226.2 in.
Height	4-dr.	54.0 in.	54.2 in.	53.5 in.	54.8 in.	54.3 in.	54.3 in.	53.7 in.	57.1 in.	54.9 in.
Width		77.3 in.	77.3 in.	77.3 in.	77.3 in.	79.7 in.	79.7 in.	79.7 in.	79.7 in.	79.9 in.
Weight—lbs.		3349	3628	3570	4063	4207	4219	4453	4972	4597
Tread front rear		59.0 in. 59.0 in.	59.0 in. 59.0 in.	59.3 in. 59.0 in.	59.0 in. 59.0 in.	63.8 in. 63.7 in.	63.8 in. 63.7 in.	63.8 in. 63.7 in.	64.0 in. 64.0 in.	63.8 in. 63.7 in.
Tires	Standard	F78-14 (6 cyl.) G78-14 (8 cyl.)	G78-14	G78-14	H78-14	H78-15	H78-15	H78-15	L78-15	J78-15
Wheel Size		14 x 6	14 x 6	14 x 6	14 x 6	15 x 6	15 x 6	15 x 6	15 x 6	15 x 6
Road Clearance		5.6 in.	5.4 in.	5.8 in.	5.9 in.	5.4 in.	5.4 in.	5.4 in.	5.5 in.	5.6 in.
Headroom	front rear (4-dr.)	38.6 in. 37.3 in.	38.3 in. 37.3 in.	37.9 in. 36.3 in.	38.4 in. 38.3 in.	38.9 in. 38.0 in.	38.9 in. 38.0 in.	38.4 in. 37.4 in.	39.6 in. 39.3 in.	39.3 in. 37.0 in.
Legroom	front rear	41.3 in. 34.8 in.	41.7 in. 34.8 in.	41.6 in. 32.3 in.	42.6 in. 34.6 in.	42.6 in. 38.5 in.	42.6 in. 38.5 in.	42.6 in. 38.5 in.	42.6 in. 39.9 in.	42.6 in. 40.3 in.
Shoulder Room	front rear	58.4 in. 57.3 in.	58.4 in. 57.3 in.	58.5 in. 57.1 in.	58.3 in. 57.4 in.	64.4 in. 63.5 in.	64.3 in. 63.3 in.	64.3 in. 63.3 in.	64.3 in. 63.3 in.	64.3 in. 59.3 in.
Hiproom	front rear	59.8 in. 59.5 in.	59.5 in. 59.2 in.	59.5 in. 52.5 in.	59.7 in. 59.4 in.	62.2 in. 62.1 in.	62.2 in. 62.1 in.	62.2 in. 62.1 in.	62.2 in. 62.1 in.	62.8 in. 62.8 in.
Fuel Tank Capacity (app.)		16.6 imp. gal.	16.6 imp. gal.	16.6 imp. gal.	19.0 imp. gal.	21 imp. gal.	21 imp. gal.	21 imp. gal.	19 imp. gal.	21 imp. gal.
Usable luggage space (cu. ft.)		—	—	—	83.6	—	—	—	106.0	—
Cargo Volume (cu. ft.)		—	—	—	83.6	—	—	—	106.0	—

## Engines

	250-1 SIX	350-2 V8	350-4 V8	455-4 V8	455-4 V8 STAGE 1	455-4 V8
Displacement (cu. in.)	250	350	350	455	455	455
HP @ rpm gross	145 @ 4000	230 @ 4400	260 @ 4400	315 @ 4400	345 @ 5000	330 @ 4600
HP @ rpm net	110 @ 3600	155 @ 3800	180 @ 3800	230 @ 4000(2)	275 @ 4400	265 @ 4400
Torque @ rpm gross	235 @ 2400	350 @ 2400	360 @ 3000	450 @ 2800	460 @ 3000	455 @ 2800
Compression Ratio	8.4:1	8.4:1	8.4:1	8.4:1	8.4:1	8.4:1
Carburetion	1 bbl.	2 bbl.	4 bbl.	4 bbl.	4 bbl.	4 bbl.
Bore x Stroke	3.875 x 3.53	3.80 x 3.85	3.80 x 3.85	4.31 x 3.90	4.31 x 3.90	4.31 x 3.90
Fuel	Regular	Regular	Regular	Regular	Regular	Regular
Oil System (less filter) (qts.)	3.3	3.3	3.3	3.3	3.3	3.3
Cooling System (qts.)	13.4	13.7	13.7	15.6	15.6	15.6
Exhaust System	Single	Single	Single	Single(1)	Dual	Dual
Clutch	9.12 in.	10.4 in.	10.4 in.	11.0 in.	11.0 in.	—
Axle Ratio	without air conditioning					
3-spd. manual	Skylark GS SportWagon LeSabre Centurion Estate	3.08:1 — — — — —	3.08:1 — 3.08:1 3.42:1 — —	3.08:1 — 3.08:1 3.42:1 — —	— — — 3.42:1 3.42:1 —	— — — — — —
4-spd. manual	GS	—	—	3.08:1	3.42:1	—
Hydra-matic	Skylark GS SportWagon LeSabre Centurion Estate Electra Riviera	3.08:1 — — — — — —	2.56:1 — 3.08:1 3.08:1 — — —	2.73:1 — 3.08:1 3.08:1 — — —	— — 3.08:1 — 2.93:1 2.93:1 2.73:1 2.93:1	— — 3.42:1 — — — — —

For 1971, all Buick engines have been designed to operate efficiently on the new no-lead or low-lead gasolines. In addition to the lower exhaust emissions attainable with this engine/fuel combination, there are benefits in longer life for your spark plugs, exhaust system and other engine components. If these no-lead, low-lead gasolines are not available, any leaded regular grade gasoline with a research octane number of 91 or higher may be used.

## GENERAL MOTORS OF CANADA LIMITED, OSHAWA, ONTARIO

The illustrations in this catalogue do not necessarily show standard colors, materials and equipment. General Motors of Canada Limited reserves the right to make changes at any time without notice, in prices, colors, materials, equipment, specifications and models, and also to discontinue models. This right may be exercised without incurring any responsibility with regard to cars previously sold.

