

New-sized Cortina.
The happy medium.



Metro Ford

150 Leichhardt Street,
Spring Hill, 4000.
Phone 21 4011

Completely new from road to roof.

The TC Cortina is totally new. Deliberately designed to meet more of the needs of today's motoring, it is a big car in performance, room and luxury . . . yet it competes with the small cars in price and economy.

All-new styling is sporty, lower and wider. In length

it is a foot shorter than a regular-sized 6-cylinder car, which means it's easy to slip through traffic and into parking spaces.

All-new interiors are the roomiest in Cortina's class, giving full-size, stretch-out comfort for five big adults. And a long, long list of appointments introduces a new standard of luxury and value.

An all-new 2000cc overhead-cam engine gives you the performance of a '6' with the economy of a '4'.

New full-coil suspensions all-round and a new longer wheelbase give exceptional riding smoothness under all road conditions. A new wider track—the widest in its class—provides unmatched stability and handling.

From bumper to bumper, special engineering has

been built into the car to deaden sound . . . you relax with one of the quietest rides on the road. And, you're protected by the Ford "12/12" warranty, which covers both parts and labour for 12,000 miles or 12 months.

Whichever model you choose, Cortina 'L' or Cortina 'XL', you have a lot of car for your money . . . in fact, the biggest car you can buy—without buying a big car.



New-sized Cortina.
The happy medium.

The new Cortina 'XL' Sedan in Bronze Wine with optional GS Rally Pack and Bumper Under-riders.

Cortina 'XL'

Luxury-performance motoring in every way.

If you want sports performance and true luxury motoring, Cortina 'XL' combines the best of both worlds.

Take its interior . . . the roomiest in its class, and the most completely equipped. It makes luxury a personal thing, with such standard features as deep-cushioned and contoured high-back bucket seats; centre console with armrest; deep-contoured rear seat with foldaway centre armrest; special luxury-grade vinyl upholstery; colour-keyed carpeting; instrument panel and door trim highlighted with wood-graining; face-level flow-through ventilation system with individual controls; 2-speed heater/demister; lockable and illuminated glove-box; electric clock; coat hooks; interior courtesy lights on all doors.

Performance is just as impressive. Your power is supplied by the all-new 2000cc overhead-cam, 112-horsepower engine, which gives you the performance of a '6' with the economy of a '4'. . . and is teamed with all-synchro, 4-on-the-floor transmission and power-assisted front disc brakes.

Standard equipment includes all items mentioned above, plus:
 Bright-metal windscreen, side-window and rear window surrounds
 Bright-metal wheel-arch mouldings Protective bumper inserts
 Chrome wheel trim rings and hubcaps Chrome exhaust Flush exterior door handles Lockable steering Cigar lighter Dual-tone horns Padded door-pull armrests front and rear Recessed interior door handles, and all Ford Lifeguard Safety Items listed on page 12.

Options include: T-bar automatic High-back full-width front seat with foldaway centre armrest Reclining front bucket seats Cloth seat inserts. (Turn to page 12 for the full listing.)



The new Cortina 'XL' interior, shown in Saddle trim with T-Bar automatic transmission.

Cortina 'L'... Every young-hearted inch says unmatched value...

For the money, Cortina 'L' puts more performance, comfort, standard appointments and style in your hands than any other car near its class. And its value goes far beyond the price that you pay: Quality, reliability, economical running and durability are all yours in Cortina 'L'.

Lively power and real money-saving fuel economy is delivered by an improved-performance version of Cortina's 1600 cc 'Cross-Flow' engine, or you can choose the optional 2000 cc overhead-cam engine.

Your transmission is a remote-control, 3-speed all-

synchronesh, floor-mounted shift, or you can go T-bar automatic if you choose the 2000 cc engine.

Room to spare is yours in the Cortina 'L'. The seating in front is contoured and cushioned high-back buckets, or an optional full-width seat. The rear seat is also contoured for extra comfort.

Appointments include carpeting throughout; a 2-speed heater/demister; face-level flow-through ventilation; lockable glove box; padded door-pull armrests on all doors; lockable steering and interior courtesy lights operated by the front doors.

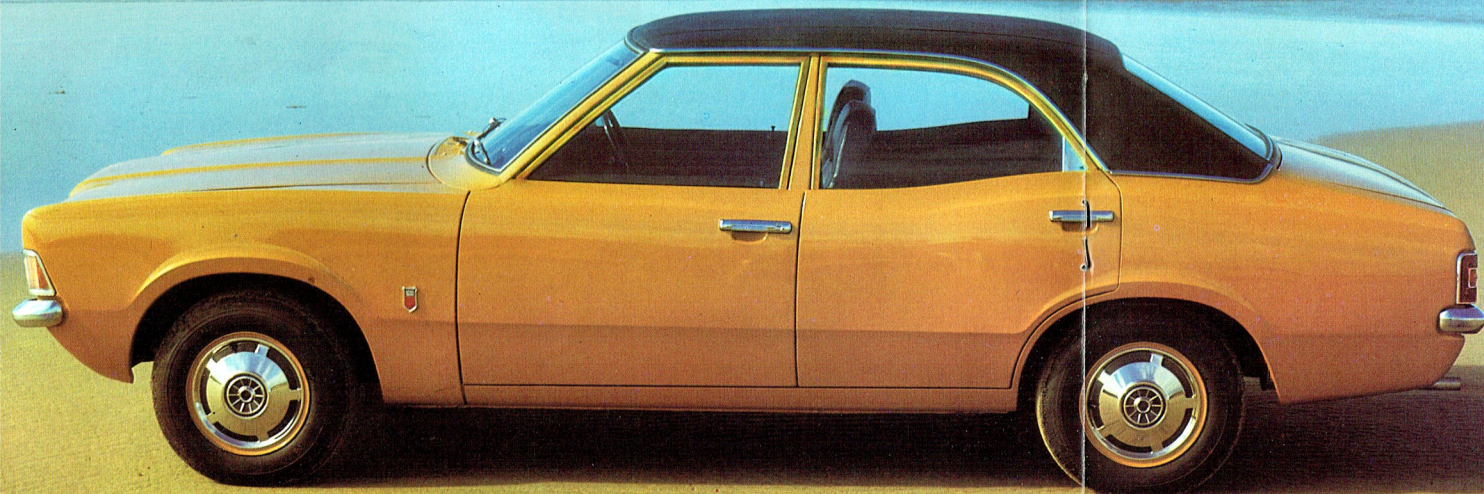
Instrumentation is complete: there's a temperature gauge, fuel gauge, oil-pressure warning light, high-beam warning light, turn-indicator warning lights and brake-system warning light.

All Ford Lifeguard Safety features (listed on page 12) are built-in, including a new dual-line braking system and special 'child-proof' locks on the rear

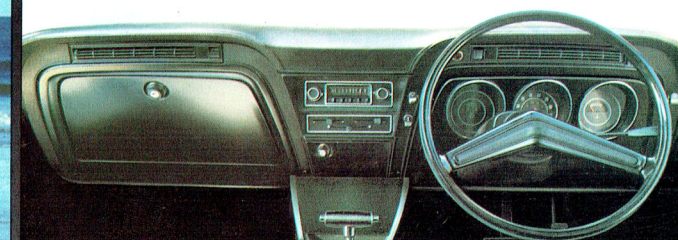
doors—flick a switch and they cannot be opened from the inside.

Standard equipment includes all items mentioned above, plus: New 1600 cc 'Cross-Flow' engine. 4-speed all-synchronesh floor-shift. Front disc brakes. 5.60 x 13 inch tyres. Front package tray mounted in front of the floor-shift (with bucket seats only). Coat hook. Cigar lighter. 2-speed windshield wipers and washers with additional foot pedal control. Bright-metal around windshield and rear window. Chrome hubcaps. Flush exterior door handles. Exterior rear-view mirror.

Options include: 2000 cc overhead-cam engine, T-bar automatic transmission, Vinyl roof—in black or beige, Sporty GS Rally Pack. (See Page 12 for the complete list.)



Above: Cortina 'L' interior in black all-vinyl trim.



Above: Cortina 'L' fascia.

Below: Optional high-back front bench seat.



Cortina Wagon

Biggest where it matters most.

Cortina's wide body and long wheelbase put 'more wagon between the wheels' to give you a family-room interior.

64 cubic feet of loadspace (with rear seat down); or room for a big family with 34 cubic feet of loadspace behind the rear seat.

The all new 2000 cc overhead-cam engine is standard in both wagons. There's a choice of transmissions: 4-speed, all-synchromesh, floor-shift manual or T-bar, 3-speed automatic.

Full-coil suspension, 56" wide track, 101.5" wheelbase, for 'big wagon' ride and room. Dual-line brakes, with power-assisted 9.7" front discs and 9" rear drums.

Cortina 'XL' Wagon:

Standard equipment includes: Centre console. Woodgrain instrument panel and door trim. Glove box light. Electric clock. Carpeted loadspace. Wheel trim rings. Protective bumper inserts. And all items mentioned below, under Cortina 'L'.

Cortina 'L' Wagon:

Standard equipment includes: Contoured high-back bucket front seats. Special sound-insulation. Carpeting. Two-speed heater/demister. Flow-through ventilation. Two-speed wipers and washers with additional foot-operated control. Steering/ignition lock. Padded door-pull armrests. Courtesy lights. One-piece, counterbalanced, swing-up tailgate. Reversing lights. Exterior rear-view mirror.

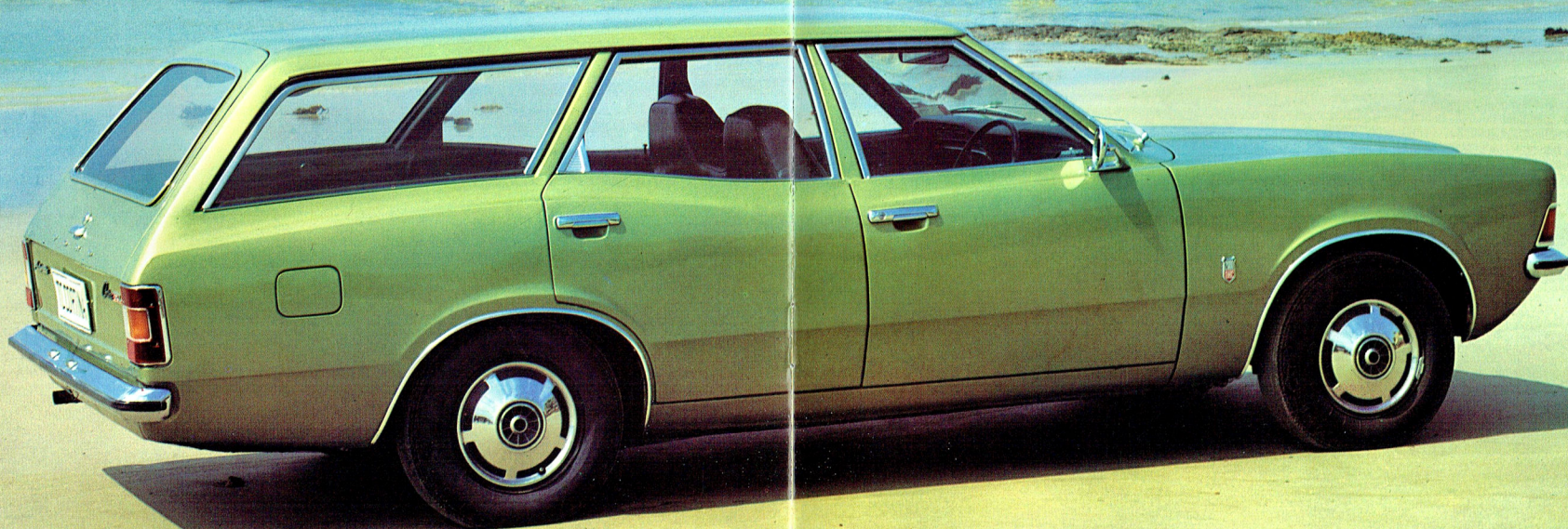
Options: T-bar, 3-speed automatic. Nylon-weave seat trim. High-back, full-width front seat. Sporty GS Rally Pack. Radial-ply tyres.



Loadspace with rear seat down: 50.5" wide, 30.5" high, 75.2" long.



Conversion to flat floor is simplicity itself.



The new Cortina 'XL' Wagon in 'Limelight' with optional wheel covers.

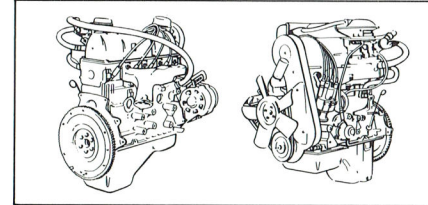


Performance

With new engines, suspensions, wider track, lower centre-of-gravity, longer wheelbase, new steering and braking—new Cortina is one of the most exciting, yet finely disciplined cars on the road. Which shouldn't really surprise you. Cortina's performance, reliability and winning ways are without equal throughout the motoring world. This new Cortina simply gives you more of what makes a great reputation.

New engines:

The heart of Cortina's performance is available in two spirited versions.



The famous 1600 cc 'Cross-Flow' engine has been refined to lift its performance to even higher levels, and at the same time maintaining its traditional fuel economy. Then there's the all-new Ford 2000 cc OHC (Standard on Wagon): smooth and quiet, it delivers the performance of a '6' with the economy of a '4'. The result of over five years of development, it offers design advantages over other OHC engines. These include: fewer moving parts for greater reliability and durability, and more positive opening of valves for improved engine efficiency and reduced valve bounce, especially at high rpm.

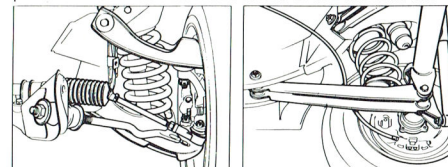
The most important advantage, however, stems from a unique, reinforced rubber drive belt. It enables far more accurate timing to be achieved, and has none of the shortcomings of a conventional chain or gear-driven OHC engine. It has no links to stretch, no gear teeth to wear.

The benefits *to you* in the Ford overhead camshaft engine are:

- Quicker response and higher power output with good fuel economy.
- Exceptional smoothness and quietness.
- Outstanding durability and reliability.

New suspensions:

New Cortina features full-coil suspension all-round, plus new features that make it one of the finest in the



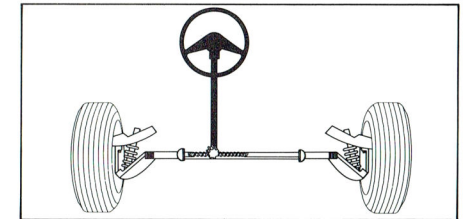
world today. At front, coils are teamed with a "double wishbone" system for exceptional stability and superb handling. At rear, coils are partnered with a four-bar-link system which virtually eliminates "axle-hop" and vibration, even under the toughest of road conditions. All in all, a smoother, more comfortable ride with a positive "feel" of the road at all times.

New wider track:

The new wider track of 56 inches front and rear further contributes to Cortina's outstanding handling and stability. Combine it with an overall car height that's been reduced by nearly 3 inches, and you have a combination of wide track and low centre-of-gravity that produces road-hugging and cornering unequalled in its class.

New longer wheelbase:

Cortina's wheelbase has been extended to a big 101.5 inches without adding an inch to body length. It simply means you get 'more car between the wheels'—which is where it counts for extra passenger comfort and riding smoothness.



New steering:

Rack-and-pinion—the finest steering of any car, any class. Incredibly precise, it is light and positive with instant directional response under all road conditions.

New brakes:

New Cortina features a safety dual-line braking system with big 9.6-inch diameter disc brakes at front and self-adjusting 9-inch drums at rear. With the 2000cc OHC engine, the front disc brakes are power-assisted.

A whole new feeling:

That's what new Cortina is all about! A brilliant combination of style, performance, ride, handling and safety characteristics that make it the finest 'big car' you can buy—without buying a big car. Just test drive new Cortina—and it's all beautifully clear!

Engine Specifications	1600	2000 OHC
Displacement	1598	1998
Bore/Stroke	3.18/3.05"	3.56/3.02"
Compression Ratio	9.0:1	9.2:1
Max. BHP @ rpm	78 @ 5700	112 @ 6000
Max. Torque @ rpm	94 @ 2600	122 @ 3500
Carburettion	single barrel	2-barrel

Opposite: Durability testing, constant speed circuit at Ford's You Yangs Proving Ground.

Options: There's an exciting range of options that allow you to tailor your new Cortina *exactly* to your needs. Choose the equipment you want, for either model, from the list below.

- Vinyl roof—in black or beige. (Sedan only).
- Tutone paint (white roof).
- Whitewall or radial-ply tyres.
- Tinted/laminated windscreens.
- Long-range, transistorised, push-button or manual radio.
- High-back, full-width front seat (has centre armrest with XL model).
- Reclining front bucket seats.
- Cloth seat-trim inserts.
- Sports steering wheel.
- Styled full wheelcovers.
- Sports road wheels.
- Racing-type exterior mirror.
- GS Rally Pack—comprising side stripes, special wheelcovers, leather, gearshift knob, tachometer, 7" halogen driving lights, styled exterior mirror and sports steering wheel.
- Heavy-duty battery.
- Country-ride suspension.

Ford Lifeguard Safety Features:

Both Cortina models include all the Ford Lifeguard Design Safety features:

- "Safety-Cage" passenger compartment (both the front and rear ends of the car are designed to absorb impact progressively, by soaking up shock impact, before it reaches the passenger compartment) □ Collapsible steering

The specifications referred to above were in effect at the time this publication was approved for printing; however, Ford Motor Company of Australia Limited and/or Ford Sales Company of Australia Limited, reserve the right, subject to the laws of any state or territory and the regulations of any competent authority which may be applicable at the time, at its discretion and without notice, to change specifications and prices of the products referred to herein at any time and without incurring liability whatsoever to any purchaser thereof. Some of the items illustrated or referred to in this publication are optional at extra cost.

FORD SALES COMPANY OF AUSTRALIA LIMITED. Reg. Office: 1735 Sydney Road, Campbellfield, Vic.

column □ Padded instrument panel
 □ Dual-line braking system with warning light □ Front disc brakes □ 2-speed windscreens wipers and washers with separate foot pedal control □ 2-speed heater/demister □ Safety glass all-round—with "zone-toughened" area in front of driver □ 2 lap-sash seat belts—front (extra centre lap belt fitted with full-width front seat) 2 lap-sash and 1 lap belt (rear) □ "Child-proof" locks on rear doors □ Safety-rim wheels □ Safety-padded sun-visors □ Shatterproof interior rear-view mirror □ Anti-burst door locks □ Wrap-around front turn lights □ Wrap-around rear turn/park lights □ Recessed interior door handles □ Exterior rear-view mirror □ Reversing lights □ Safety fuel system... the fuel tank is mounted under the boot floor and positioned to prevent damage in the event of a collision (it also prevents fumes from reaching the passenger compartment)... the fuel tank filler-pipe is isolated and protected from the car body and luggage compartment contents by an outer steel sleeve.

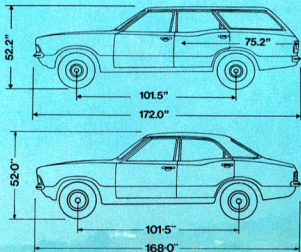
Ford 12/12 Warranty: Both Cortina models give you warranty protection for 12,000 miles or 12 months whichever comes first, excluding tyres and tubes which are warranted by their manufacturer. Every Cortina is warranted against defects in materials and workmanship for this period. Owners are

responsible only for normal maintenance and routine replacement of maintenance items.

Wheels and tyres:

Sedans: 4½" x 13" pressed steel wheels with 5.60 x 13" 4-ply tubeless tyres (Cortina 'L'). 5½" x 13" pressed steel wheels with A78 x 13" 4-ply tubeless tyres (standard on Cortina 'XL' and on the Cortina 'L' with the optional 2000 cc OHC engine).

Wagons: 5½" x 13" pressed steel disc wheels with JJ wide-base safety rims. B78L 13 4-ply tubeless tyres.



Dimensions and capacities (not shown above): Track, front and rear, 56"; Turning circle 31.8 ft; Fuel tank capacity 12 gallons.

Going Ford is the going thing!

CORTINA



Cortina 'XL' Sedan in Bronze Wine with optional GS Rally Pack, and Bumper Under-riders.