

FALCON WAGON





Illustrated above: Fairmont in Apollo Blue with optional 302 CID engine and radial tyres.
 below: Optional rear-facing 3rd seat.

Big Wagon for a big country.

New Falcon is the wagon family's wagon. Styled big, on the longest wheelbase in its class (a long 116") Falcon wagon is built to take a big country like Australia in its stride.

With more style... load space... comfort. And the best ride of any wagon going. You can count on new Falcon to get you, your passengers, and all your gear, to wherever your fancy takes you. In big style.

To make a great wagon even greater, front wheel disc brakes are fitted as standard.

Outside new Falcon wagon sports a longer leaner bonnet and bold new grille.

Inside, inertia-reel car-and-body-sensitive seat belts give you freedom to move plus the comforting assurance that you will be safely and firmly held in your seat if any sudden pressure is applied. Out of use they retract neatly from sight.

There isn't a wagon around that moves you along like new Falcon. Your choice of engines includes the torque-packed pulling power of Falcon's big sixes and the extra performance and stamina of the 302 CID V8... horsepower you can count on, mile after out-back mile.

When there's a load to load... Falcon's exclusive 'Dual-Action' tailgate (standard on Fairmont) makes the job easier than you ever thought possible... open it like a door or drop it down like a conventional tailgate.

And when even Falcon's big, big wagon isn't big enough... there's an all-new optional fold away, rear-facing third seat. It's designed to seat two people comfortably and safely. This great new option comes complete with seat belts and luxuriously carpeted load area.

It's all wagon... all Falcon... designed so you can tackle a big country in your stride.





New frontiers of style.

Fairmont Wagon . . . everything you'd expect from a superbly appointed limousine with one very important extra. LOADSPACE . . . 82.6 cubic feet of it to be exact.

Fairmont wagon is simply the most luxurious load carrier on four wheels.

Falcon 500 Wagon . . . Like Fairmont, built big, long and strong on Ford's exclusive torque-box chassis (massive steel box-frames that run the entire length of the body), Falcon 500 is Australia's best wagon buy, by a mile.

With front wheel disc brakes as standard, Falcon 500 wagon is more satisfying to drive than most cars . . . a whole lot more practical too!

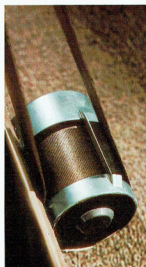
Falcon 500 Standard Equipment Highlights:

- 200 CID 130 horsepower "six" • All synchromesh manual column transmission • Front wheel disc brakes • Full-width, high back seating • Inertia Reel front seat belts • Blendaire 2-speed heater demister • Steering and transmission lock • 2-speed electric windscreen wipers with push button washers • Wrap-round cockpit dash with speedo calibrated in Kilometres and Miles per hour • Steering column stalk control for turn indicators, lane change warning, hi-lo beam, headlight flasher and horn button
- Courtesy lights, reversing lights and all Ford Designed Lifeguard Safety Features listed on page 6.

Fairmont Standard Equipment Highlights:

- 250 CID, 155 horsepower "six" • 3 speed SelectShift Cruisomatic • 11.25" turbo-cooled power disc brakes • High-back contoured cushioned and reclining front seats with fold-away centre armrest • Dual action tailgate • Carpeted load area • Plus all other items above under Falcon 500 Standard Equipment.

Illustrated above: Falcon 500 in Copper Bronze with optional full wheel covers and radial tyres.



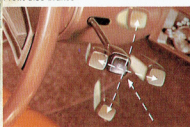
Inertia reel seat belt



Fairmont interior



Front disc brakes



Steering column stalk control



Falcon 500 interior

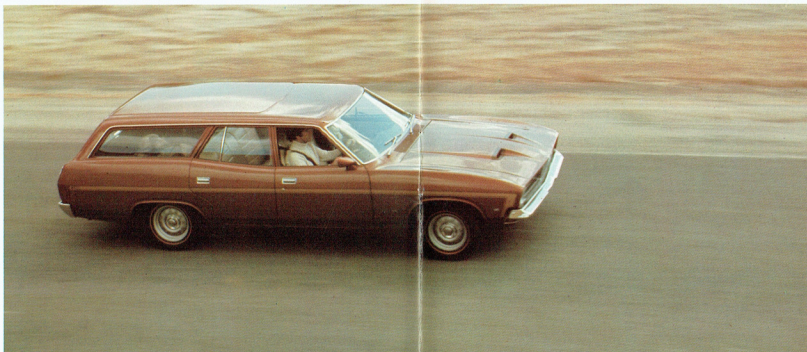
New frontiers of excitement.

Grand Sport Wagon.

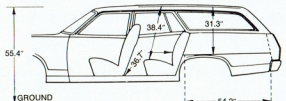
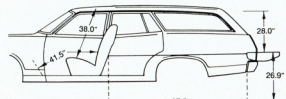
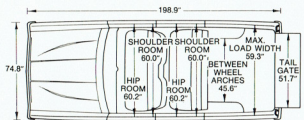
Falcon's GS Rally pack option is the most exciting thing that's happened to wagons for years. One look and you'll understand why. NASA-scooped GT bonnet. Good looking track-styled wheels. Sweeping side stripes with GS insignia —full GT instrumentation which includes Tachometer, oil and voltmeter gauges. There's even a sporty three spoked steering wheel.

Other options include hip-hugging high backed bucket seats, SelectAir fully integrated air conditioning, combined radio/stereo cassette tape player. If you've got performance in mind, there's the proven reliability of the top-of-the-line, 250 CID 155 horsepower six or the superb easy-to-master power of the all Australian 302 CID 240 horsepower V8 engine.

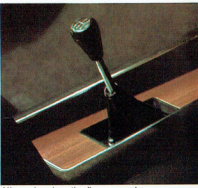
We invite you to test drive New Falcon Wagon—The big Falcon for the big country.



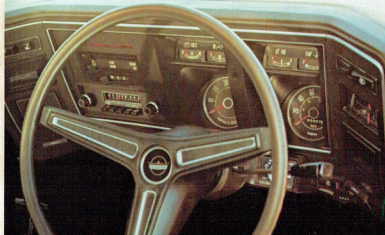
Falcon 500 with optional GS Rally Pack and radial tyres.



6-inch sports road wheels.



All-synchro 4-on-the-floor manual.



GS Rally Pack and Radio



Long-range driving lights.



Airconditioning and Radio/Stereo tape player.



Power window control panel.



Reclining front bucket seats.

THE FULL LIST OF OPTIONS (Engines and transmissions on opposite page)	Model	
	Falcon 500	Fairmont
Dual-action tailgate	OPT	STD
Rear facing 3rd seat	OPT	OPT
Power-operated tailgate window	OPT	OPT
Quarter-vent front windows	OPT	OPT
Power windows—front and rear	(a)	NA
Tinted side and rear windows	OPT	OPT
Variable ratio power-steering	OPT	OPT
Combined Radio/Stereo Cassette tape player	OPT	OPT
SelectAir integrated air-conditioning	(b)	OPT
Nylon-weave seat trim inserts	(c)	OPT
Deep-pile carpeting	(d)	OPT
Reclining front bucket seats		
—with foldaway centre armrest	OPT	STD
—with sports console/armrest	(e)	OPT
11-transistor push-button radio	OPT	OPT
7-transistor manual radio	OPT	OPT
Electric clock	OPT	OPT
Wagon dust deflector	OPT	OPT
Power disc brakes (front)	OPT	STD
6-inch Mag. type sports road wheels	OPT	OPT
Outback Package: Comprising heavy-duty shock absorbers, engine stone guard, fuel tank guard, heavy-duty air cleaner	OPT	OPT
Limited-slip differential	OPT	OPT
Long-range driving lights set into grille	OPT	OPT
Heavy-duty battery	OPT	OPT
Grand Sport Rally Pack	OPT	OPT
Special protection group, comprising: front and rear bumper over-riders with black rubber inserts, full-length body-side mouldings with black vinyl inserts	OPT	OPT
Styled full wheel covers	OPT	STD
Exterior rear-view styled mirror (pass. side)	OPT	OPT
Remote control styled mirror (driver's side)	OPT	OPT
Tutone paint (white roof)	OPT	OPT
Laminated and graduated-tint windshield	OPT	OPT

BRAKES, TYRES AND WHEELS

Front: 11.25" diam. disc brakes (non-power)	STD	NA
11.25" diam. power-assisted disc —turbo-cooled	OPT	STD
Rear: 10" diam. self-adjusting drum with bonded linings	STD	STD

EQUIPMENT:	6 Seat Wagon	8 Seat Wagon
(Note: All wheels are pressed steel with safety rims)	200	302
	250	V8
250 V8 1.4 Black sidewall 4-ply 6JJ wheels	STD	NA
7.35 S14 Black sidewall 4-ply 6JJ wheels	NA	STD
7.35 S14 White sidewall 4-ply 6JJ wheels	OPT	OPT
7.75 L14 Black sidewall 4-ply 6JJ wheels	NA	NA
7.75 S14 Black sidewall 4-ply 6JJ wheels	NA	STD
7.75 S14 White sidewall 4-ply 6JJ wheels	NA	NA
185 SR14 Black sidewall Radials—6JJ wheels	OPT	OPT
ER70 H14 Red sidewall Radials—6JJ wheels	OPT	OPT

Code for charts: 'STD' means standard equipment. 'OPT' means optional at extra cost. 'OPT/R' means optional at reduced cost. 'NA' means not available.
Notes: (a) Power windows available only with ventless glass. (b) Airconditioning available only with 250 CID '6' and V8 engine. (c) Cloth trim only available with bucket seats. (d) Carpeting must be fitted with optional bucket seats. (e) Sports console must be fitted with optional floor-mounted transmissions and is not available with full-width seat.



SAFETY FEATURES:

Ford, the industry's safety pioneer, makes cars as strong and safe as possible—to protect you. The results of this policy are reflected in the following list of Ford Lifeguard Safety Features. They are standard on every model Falcon. They are built-in to (a) reduce the likelihood of an accident occurring and (b) reduce the likelihood of personal injury in case of an accident.

- car and body-sensitive Inertia Reel front seat belts standard
- front disc brakes standard
- high-backed front seats
- deeply-recessed, padded

SPECIFICATIONS:

Clutch (Manual Transmission):

Diaphragm spring type, single cushion disc dry plate, hydraulically operated. 200 CID and 250 CID 6-cylinder engine—diam. 9.5", friction area 78 sq. ins. 302 CID 8-cylinder engine—diam. 10.0", friction area 85.5 sq. ins.

Manual Transmission: Column shift: 3 forward speeds all-synchro—1 reverse. Ratios: 6-cylinder: 1st—2.95; 2nd—1.69; 3rd—1.00; reverse—3.67; 8-cylinder: 1st—2.71; 2nd—1.69; 3rd—1.00; reverse—3.37.

Four-On-The-Floor Manual: 200 and 250 CID 'sixes', 302 CID V8—Ratios: 1st—2.82; 2nd—1.84; 3rd—1.32; 4th—1.00; reverse—2.66.

Automatic Transmission: 200 CID and 250 CID 6-cylinder engines with Cruisomatic. Ratios: 1st—2.39; 2nd—1.45; 3rd—1.00; reverse—2.09. 302 CID V8 Cruisomatic: 1st—2.46; 2nd—1.46; 3rd—1.00; reverse—2.20.

- instrument panel
- rocker-switch type controls
- windshield-mounted, break-away, anti-glare interior rear-view mirror
- 'Blendaire' heater/demister (2-speed)
- collapsible steering column
- impact-absorbing steering wheel with full-width padded hub
- controlled collapsible front end
- padded sun-visors
- padded door-pull armrests
- double-grip safety door locks
- recessed interior door handles
- 2-speed electric windshield wipers
- non-lift, non-reflective wiper blades
- push-button electric windshield washers
- thick safety-plate

Rear Axle: Ratios (to 1): 200 CID 6-cylinder engine (manual/automatic) 3.23; 250 CID 6-cylinder engine (manual) 3.23; (automatic) 2.92. 302 CID V8 (manual/automatic) 2.92.

Front Suspension: Angle-poised ball-joint type. Heavy duty coil springs with hydraulic shock absorbers. Torsion bar ride stabilizer.

Rear Suspension: Semi-elliptical asymmetrical, longitudinally-mounted leaf springs. Diagonally mounted hydraulic shock absorbers. Rubber bushed shackles.

Steering: Recirculating ball type. Steering gear ratio—20:1. Optional power steering—variable ratio 17.5:1-11.5:1 at lock. Steering wheel—16" diam.

Brakes: Dual Line system with inbuilt warning light on instrument panel. Self-adjusting hydraulic 10" x 1.75" rear drums. Bonded linings. Floating caliper-type power disc front brakes, turbo-

- glass windscreen with 'zone-toughened' area in front of driver, and safety-glass all other windows
- seat belt warning light
- dual hydraulic brake system with warning light
- exterior rear-vision styled mirror
- safety-rim wheels
- high-intensity headlights
- reversing lights
- wrap-around front and rear turn lights
- flush-mounted exterior door handles
- seat belts: 2 lap-sash, 1 lap (front) on full width seat models; 2 lap-sash (front) on bucket seat models; 2 lap-sash, 1 lap (rear) on all models.

cooled and ventilated, 11.25" diam. (Non-power Falcon 500).

Weights: Approximate kerb weight with 200 CID engine, manual transmission—from 3257 lbs. Add 29 lbs. for SelectShift Cruisomatic.

Warranty: Ford® warrants with respect to each new passenger or light commercial vehicle sold by Ford that for a period of 12 months or 12,000 miles (whichever first occurs) from the date of original retail sale Ford will repair or replace free of charge any part of such vehicle (except tyres) found to be defective in factory materials or workmanship under normal use and operation within Australia.

PROVIDED THAT:

- the vehicle has been properly used, operated, maintained and cared for, and,
- the repair or replacement is carried out by an authorised Ford Dealer.

* "Ford" means Ford Sales Company of Australia Limited.

Illustrations and information presented were correct when approved for printing. Ford Motor Company of Australia Limited and/or Ford Sales Company of Australia Limited reserves the right to discontinue or change at any time, specifications or design without incurring obligations. Some features shown or described are optional at extra cost. Some options are required in combination with other options. Always consult your Ford Dealer for the latest, most complete information on models, features, prices and availability.

FORD SALES COMPANY OF AUSTRALIA LIMITED, 1735 Sydney Rd, Campbellfield.

FORD FALCON



Going Ford is the going thing!