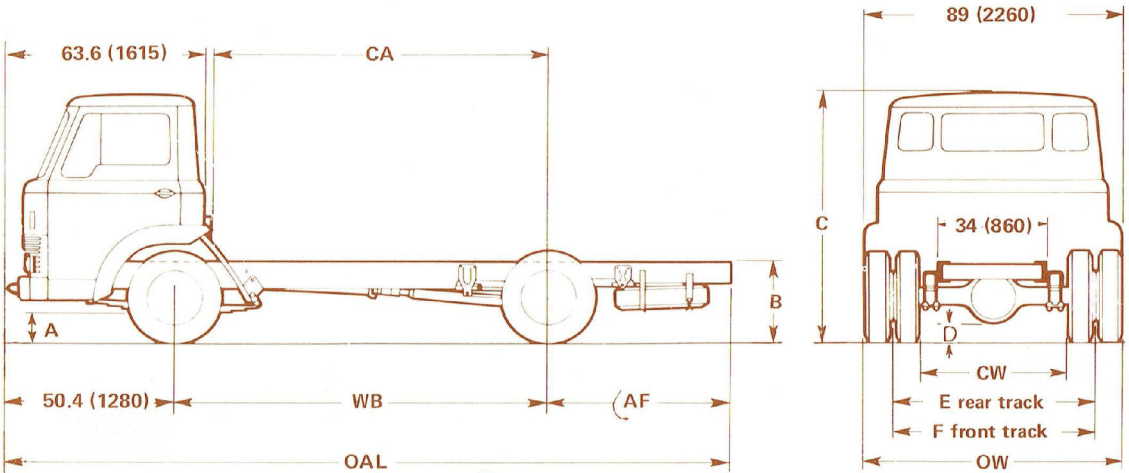
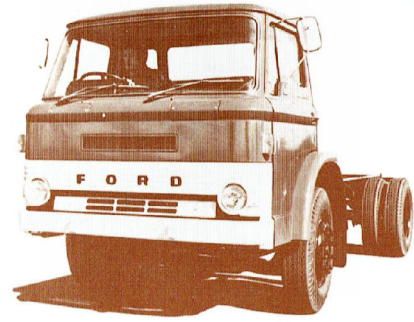


# FORD

## D SERIES CUSTOM FORWARD CONTROL TRUCKS

### D0710 Petrol

Maximum GVW's Std. 13250 lb. (6015 Kg)  
 Opt. 11200 lb. (5085 Kg)  
 Maximum GCW 19000 lb. (8600 Kg)



Dimensions in inches (mm). All measurements are for vehicle with Minimum Equipment. Frame heights taken at end of frame.

A	6.6" ( 165mm)	C-unladen	88.6" (2250mm)	F	71.3" (1810mm)
B-unladen	32.0" ( 810mm)	D	6.4" ( 160mm)	CW	49.0" (1240mm)
B-laden	27.0" ( 690mm)	E	66.5" (1690mm)	OW	84.0" (2130mm)

Dimensions Variant	Dimensions				Turning Circle wall to wall—ft(m)	Kerb Weights (Estimated)		
	WB	CA	AF	OAL		Front	Rear	Total
Chassis Cab	in. (mm)	in. (mm)	in. (mm)	in. (mm)	42 (12.8)	lb. (Kg)	lb. (Kg)	lb. (Kg)
Chassis Cab	120(3050)	108(2740)	58(1470)	228(5800)	46 (14.0)	3410 (1545)	1610 ( 725)	5020 (2270)
Chassis Cab	134(3400)	122(3100)	68(1730)	252(6410)		3380 (1530)	1670 ( 745)	5050 (2275)

NOTE: ALL FORD KERB WEIGHTS INCLUDE FULL OIL, FUEL, WATER, ETC.

#### WEIGHT DISTRIBUTION (lbs.-Kg)

	Front	Rear	Trailer	Total
Chassis/ Cab Weight				
Body & Equipment Weight				
	Total			
	GVW/GCW			
	Payload Capacity			

#### PRICING:

Dollars

Chassis/Cab	
Optional Eqpt.	
Body	
Total	
Trade	
Balance	

# SPECIFICATIONS

## Ford D Series Custom Forward Control Trucks D0710 Petrol

### ENGINE:

Ford 240 CID (3.9 litre) 6 cyl. OHV petrol

	High comp.	Low comp.
RAC Rating:	38	38
Bore/Stroke inches (mm):	4.00 x 3.18 (101.6 x 80.8)	4.00 x 3.18 (101.6 x 80.8)
Compression Ratio:	8.1:1	7.5:1
Gross BHP — DIN	125 @ 4000	114 @ 4000
Net BHP — DIN	110 @ 3800	100 @ 3800
Gross Torque (lb/ft)	192 @ 2600	182 @ 2200
Net Torque (lb/ft)	181 @ 2400	171 @ 2000

Features: Full flow replaceable oil filter, replaceable paper element air cleaner, thermo-syphon pump assisted cooling system, optional 10 in. (254 mm) Cyclopak with stackpipe.

### AXLE FRONT:

Ford. Type 55. 5500 lb. (2500 Kg) capacity. Solid I beam.

### AXLE REAR:

Ford. Type 13A. Spiral bevel. 13000 lb. (5900 Kg) capacity. 5.286:1 ratio. 12.625 in. (320 mm) dia. ring gear. Hypoid fully floating.

### BRAKES:

SERVICE — Single line air hydraulic with Clayton Dewandre "Air Pak" booster. Fitted with air pressure gauge and low pressure warning buzzer.

Brake Size: 13 x 4 in. (330 x 101 mm) front; 12.125 x 4 in. (308 x 101 mm) rear. Total lining area 398.8 sq. in. (2572 sq. cm.). Park Brake: Mechanical by rod and cable from pistol grip twist release single pull dash mounted lever to rear wheels.

### CHASSIS:

Parallel channel sections of 8 x 2.5 x .187 in. (203 x 63 x 4.7 mm) 5.3 cu. in. (87.0 cu. cm.) section modulus. 51500 p.s.i. (3620 Kg per sq. cm.) yield strength steel.

### CLUTCH:

Single. Dry plate. Moulded asbestos lining with hydraulic operation. Diameter 12 in. (305 mm). Facing area 160 sq. in. (1031 sq. cm.).

### DRIVELINE:

Two piece 3 in. (76.2 mm) dia. shafts with Hardy Spicer 1410 series universal joints and centre bearing.

### CAB:

Ford phase 1 custom cab.

Features: Three seat all steel forward control tilt.

### INTERIOR

Fully adjustable driver's seat.  
Dual passenger seat.  
Washable PVC headlining.  
Trimmed rear cab panel.  
PVC trimmed engine cover insulation.  
Interior light.  
Door lock (driver's side).  
Chrome interior door pull handles.  
Chrome assist handles.  
Opening quarter vents.  
Full drop door glass.  
Toughened glass with zoned area in front of driver.  
Facia crash pad.  
Padded full width interior sun visors.  
Rubber floor mat retained with aluminium scuff plates.

Finish: Exterior — Electrocoat undercoating process with baked enamel finish.  
Interior — High grade expanded vinyl trim.

Lockable glove compartment.  
Heater/demister.  
Door Stowage Compartment.  
(driver's side).  
Two coat hooks.  
Safety belt anchorages, driver's belt.  
Ashtray.

### EXTERIOR

Dual rear view mirrors.  
Dual electric horns.  
Dual speed self parking electric windshield wipers.  
Windshield washers.  
Front towing eyes.  
Windshield surround (bright metal).  
6" deep front bumper  
Front mud flaps.

### ELECTRICAL:

12 volt negative earth system.  
Battery — 12 volt. 57 AH. 9 plate.  
Alternator — 40 amp. prestolite.  
7" (177.8 mm) headlamps.  
Park lamps.  
Front directional indicators.  
Rear combination stop-tail/turn and number plate lamps.  
Instruments and equipment — see cab.

### FUEL CAPACITY:

20 gallons (91 litres) in rectangular tank on outside right hand side member.

### SHOCK ABSORBERS:

Double acting telescopic front only.

### SPRINGS FRONT:

Semi elliptic. 4500 lb. (2040 Kg) pad capacity per axle. 10 leaves plus shock absorber attachment. 48 x 2.5 in. (1220 x 63.5 mm) main leaf.

### SPRINGS REAR:

Semi elliptic. 8600 lb. (3900 Kg) pad capacity per axle. 10 leaves. 52 x 3 in. (1320 x 76.2 mm) main leaf.

### STEERING:

Bishop 300Q worm and peg 24:1 ratio. 19.8 in. (500 mm) dia. steering wheel.

### TRANSMISSION:

Ford 4 speed 4-310 with latter three synchronized. Ratios — 6.32, 3.09, 1.68, 1.00:1. Reverse — 7.4:1. 6 bolt S.A.E. P.T.O. on right hand side delivers 30 h.p. @ 1500 r.p.m. and 260 lb./ft. torque. Lube capacity is 6 pints.

### WHEELS:

Seven in number with spare located in cradle at rear underframe. Size — 16 x 6 — 6 stud with 4.8 offset and 8.08 bolt circle

### TYRES:

7.50 - 16 x 8 front and rear (13250 lb. (6015 Kg) GVW).  
7.50 - 16 x 6 front and rear (11200 lb. (5085 Kg) GVW).  
Spare tyre optional.

### INSTRUMENTS

Printed circuit instrument cluster.  
Fused lighting circuit.  
Large instrument cluster with —  
Speedometer/odometer  
Fuel gauge  
Battery condition meter  
Water temperature gauge  
Oil pressure gauge  
Air pressure gauge  
Audible low pressure warning buzzer.  
Also warning lights for —  
Main beam  
Charge indicator  
Direction indicator  
Parking brake.  
Optional — Laminated windshield  
— Chassis cowl.

*The specifications referred to herein were in effect at the time this publication was approved for printing; however, Ford Motor Company of Australia Limited and/or Ford Sales Company of Australia Limited reserve the right, subject to the laws of any state or territory and the regulations of any competent authority which may be applicable at the time, at its discretion and without notice, to change specifications and prices of the products referred to herein at any time and without incurring any liability whatsoever to any purchaser thereof. Some of the items illustrated or referred to in this publication are optional at extra cost.*

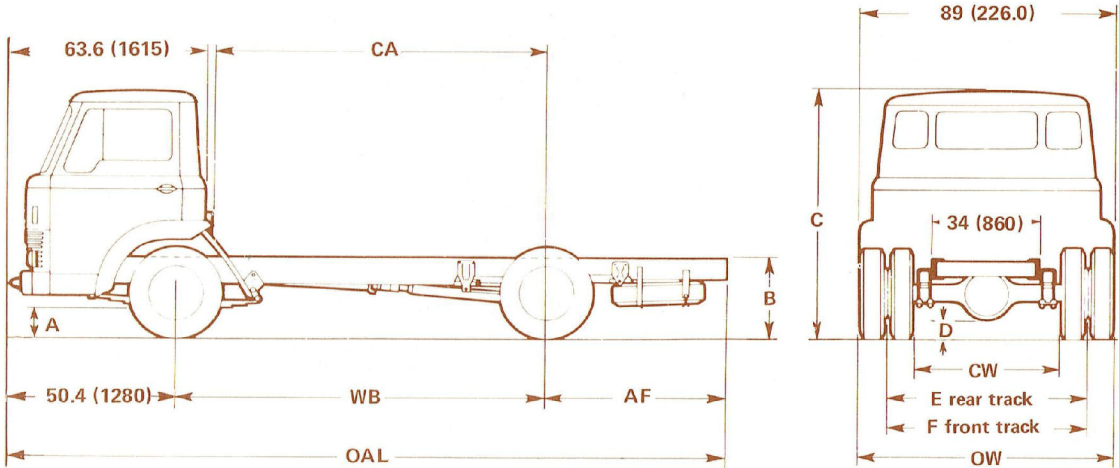
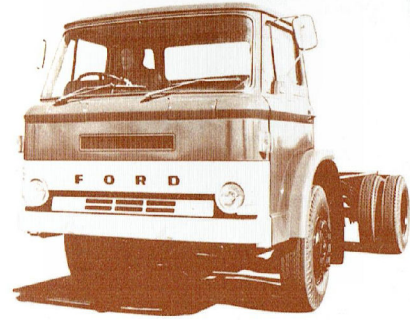


# FORD

## D SERIES CUSTOM FORWARD CONTROL TRUCKS

### D0910 Petrol

Maximum GVW's    Std.    16000 lb. ( 7270 Kg)    N.S.W. 15000 (6810 Kg)  
                           Opt.    18000 lb. ( 8170 Kg)  
                           Opt.    20700 lb. ( 9400 Kg)  
 Maximum GCW    21000 lb. ( 9540 Kg)



Dimensions in inches (mm). All measurements are for vehicle with Minimum Equipment. Frame heights taken at end of frame.

A	7.5" ( 190mm)	C-unladen	88.9" (2260mm)	F	73.6" (1870mm)
B-unladen	35.7" ( 910mm)	D	7.5" ( 190mm)	CW	46.8" (1190mm)
B-laden	32.2" ( 820mm)	E	66.5" (1690mm)	OW	86.0" (2190mm)

Dimensions Variant	Dimensions				Turning Circle wall to wall—ft(m)	Kerb Weights * (Estimated)		
	WB	CA	AF	OAL		Front	Rear	Total
Chassis cab	in. (mm) 156(3960)	in. (mm) 144(3660)	in. (mm) 76(1930)	in. (mm) 282(7170)	53.0 (16.0)	lb. (Kg) 3970 (1800)	lb. (Kg) 2340 (1065)	lb. (Kg) 6310 (2865)

\* D0910 16000 lb. (7260 Kg) GVW petrol with 4-410-S trans.  
 Add 115 lb. (52.2 Kg) to total for 6-600-S trans.

NOTE: ALL FORD KERB WEIGHTS INCLUDE FULL WATER, FUEL, OIL, ETC.

#### WEIGHT DISTRIBUTION (lbs.-Kg)

	Front	Rear	Trailer	Total
Chassis/ Cab Weight				
Body & Equipment Weight				
	Total			
	GVW/GCW			
	Payload Capacity			

#### PRICING:

Dollars

Chassis/Cab	
Optional Eqpt.	
Body	
<b>Total</b>	
Trade	
<b>Balance</b>	

# SPECIFICATIONS

## Ford D Series Custom Forward Control Trucks D0910 Petrol

### ENGINE:

Std. Ford 240 CID (3.9 litre) 6 cyl. OHV petrol.

RAC Rating:	High comp.	Low comp.
Bore/Stroke inches (mm)	38 4.00 x 3.18	38 4.00 x 3.18
Compression Ratio:	101.6 x 30.8	101.6 x 80.8
Gross BHP — DIN	8.1:1	7.5:1
Net BHP — DIN	125 @ 4000	114 @ 4000
Gross Torque (lb/ft)	110 @ 3800	100 @ 3800
Net Torque (lb/ft)	192 @ 2600	182 @ 2200
	181 @ 2400	171 @ 2000

**Features:** Full flow replaceable oil filter, replaceable paper element air cleaner, thermo-syphon pump assisted cooling system. Optional 10 in. (254 mm) Cyclopak with stackpipe.

### AXLE FRONT:

Ford. Type 75 7500 lb. (3400 Kg) capacity. Solid I beam.

### AXLE REAR:

Ford. Type 14A 15000 lb. (6800 Kg) capacity. 6.8:1 ratio. 13.875 in. (350 mm) ring gear dia.

### BRAKES:

**SERVICE** — Single line air hydraulic with Clayton Dewandre "Air Pak" booster. Fitted with air pressure gauge and low pressure warning buzzer.

**Brake Size** — 13 x 4 in. (330 x 101 mm) front; 13 x 5 in. (330 x 127 mm) rear. Total lining area 427 sq. in. (2752 sq. cm.).

**Park Brake:** Mechanical by rod and cable from pistol grip twist release multi pull dash mounted lever to rear wheels.

### CHASSIS:

Parallel channel sections of 9.5 x 2.97 x 0.21 in. (241 x 75 x 5 mm) 8.43 cu. in. (138.1 cu. cm.) sect. modulus. 34500 P.S.I. (2425 Kg per sq. cm.) yield strength steel.

### CLUTCH:

Single. Dry plate. Moulded asbestos lining with hydraulic operation. Diameter 12 in. (305 mm). Facing area 160 sq. in. (1031 sq. cm.).

### DRIVELINE:

Two piece 3 in. (76.2 mm) diameter shafts with Hardy Spicer 1410 series universal joints and centre bearing.

### ELECTRICAL

12 volt negative earth.

Battery — 12 volt. 57 A.H. 9 plate.

### CAB:

Ford phase 1 custom cab.

**Features:** Three seat all steel forward control tilt.

### INTERIOR

Fully adjustable driver's seat.

Dual passenger seat.

Washable PVC headlining.

Trimmed rear cab panel.

PVC trimmed engine cover insulation.

Interior light.

Door lock (driver's side).

Chrome interior door pull handles.

Chrome assist handles.

Opening quarter vents.

Full drop door glass.

Toughened glass with zoned area in front of driver.

Facia crash pad.

Padded full width interior sun visors.

Rubber floor mat retained with aluminium scuff plates.

**Finish:** Exterior — Electrocoat undercoating process with baked enamel finish.  
Interior — High grade expanded vinyl trim.

Lockable glove compartment.

Heater/demister.

Door stowage compartment

(driver's side).

Two coat hooks.

Safety belt anchorages, driver's belt.

Ashtray.

### EXTERIOR

Dual rear view mirrors.

Dual electric horns.

Dual speed self parking

electric windshield wipers.

Windshield washers.

Front towing eyes.

Windshield surround (bright metal).

6" deep front bumper.

Front mud flaps.

Alternator — 40 amp. Prestolite.

7" (177.8 mm) headlamps.

Park lamps.

Front directional indicators.

Rear combination stop-tail/turn and number plate lamps.

Instruments and equipment — see cab.

### FUEL CAPACITY:

20 gallons (91 litres) in rectangular tank on right hand frame.

### SHOCK ABSORBERS:

Double acting telescopic front only.

### SPRINGS FRONT:

6700 lb. (3040 Kg) total axle capacity. 57 x 3 in. (1448 x 76.2 mm) main leaf. 9 leaves plus shock absorber attaching leaf.

### SPRINGS REAR:

Main — 9400 lb. (4270 Kg) total axle capacity. 10 leaves plus 2 radius leaves. 46.5/56 x 3 in. (1181/1422 x 76.2 mm) main leaf.

Auxiliary — 4500 lb. (2040 Kg) capacity per axle. 4 leaves. 35.5 x 3 in. (902 x 76.2 mm) main leaf.

### STEERING:

Bishop 300Q worm and peg 24:1 ratio. 19.8 in. (500 mm) dia. steering wheel.

### TRANSMISSION:

Std. Ford 4 speed all synchro. 4-410-S.

Opt. Ford 6 speed all synchro. 6-600-S.

Ratios — 4 speed 6.49, 3.21, 1.67, 1.00:1 (Rev. 7.4:1)

Ratios — 6 speed 7.51, 4.58, 2.85, 1.87, 1.31, 1.00:1 (Rev. 7.18).

### WHEELS:

Seven in number with spare rim located in winch type carrier on N.S. frame. Size — 20 x B6.0 — 8 stud. 10.8 in. bolt circle. 5.10 offset. 3 piece disc.

### TYRES:

Six only with spare available as option. All tube type.

5 Ton — 7.50 - 20 x 10 front and rear (19000 lb. (8630 Kg) GVW)

Opt. — 7.50 - 20 x 12 front and rear (20700 lb. (9400 Kg) GVW)

4 Ton — 7.50 - 20 x 8 front and rear (16000 lb. (7270 Kg) NSW 15000 lb. (6810 Kg).)

Opt. — 7.50 - 20 x 8 front; 7.50 - 20 x 10 rear (18000 lb. (8170 Kg) GVW).

### INSTRUMENTS

Printed circuit instrument cluster.

Fused lighting circuit.

Large instrument cluster with —

Speedometer/odometer

Fuel gauge

Battery condition meter

Water temperature gauge

Oil pressure gauge

Air pressure gauge

Audible low pressure warning buzzer.

Also warning lights for —

Main beam

Charge indicator

Direction indicator

Parking brake

**Optional** — Laminated windshield —

Chassis cowl.

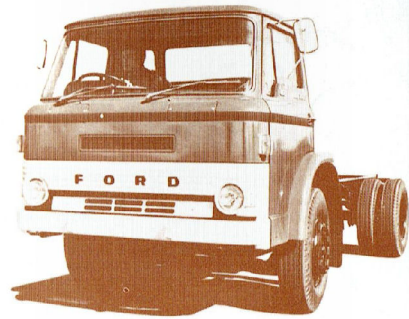
*The specifications referred to herein were in effect at the time this publication was approved for printing; however, Ford Motor Company of Australia Limited and/or Ford Sales Company of Australia Limited reserve the right, subject to the laws of any state or territory and the regulations of any competent authority which may be applicable at the time, at its discretion and without notice, to change specifications and prices of the products referred to herein at any time and without incurring any liability whatsoever to any purchaser thereof. Some of the items illustrated or referred to in this publication are optional at extra cost.*



# FORD

## D SERIES CUSTOM FORWARD CONTROL TRUCKS

### D1011 Petrol



Maximum GVW's

With 6-600-S Trans

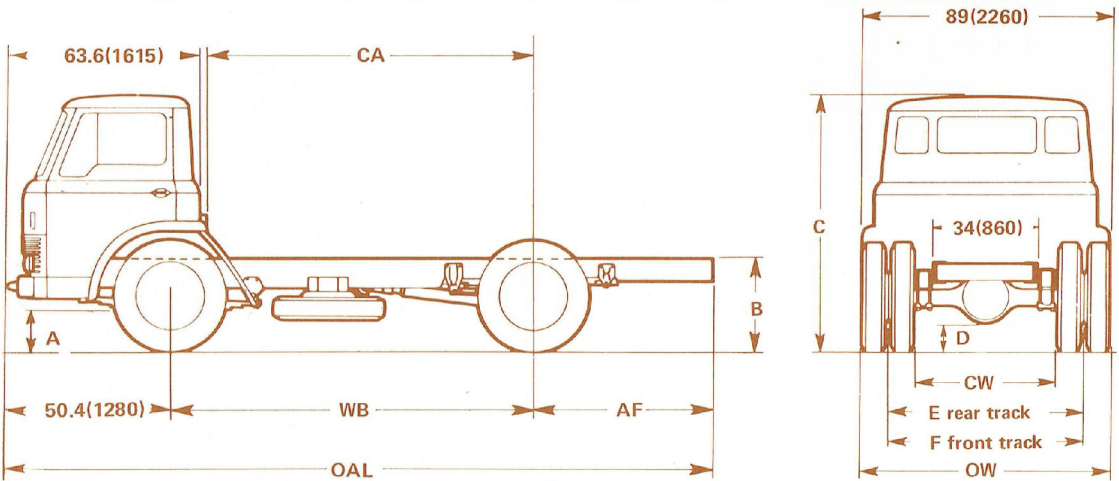
Std. 21400 lb. (9715 Kg)  
Opt. 23000 lb. (10440 Kg)  
Opt. 23600 lb. (10720 Kg)

With 4-410-S Trans

Std. 16000 lb. (7270 Kg)  
Opt. 18000 lb. (8170 Kg)  
Opt. 19000 lb. (8630 Kg)  
Opt. 21400 lb. (9715 Kg)

NSW 15000 lb.

Maximum GCW 32000 lb. (14530 Kg)



Dimensions in inches (mm). All measurements are for vehicle with Minimum Equipment. Frame heights taken at end of frame.

A	9.2" ( 235 mm)	C-unladen	90.9" (2310 mm)	F	75.2" (1910 mm)
B-unladen	38.7" ( 985 mm)	D	8.8" ( 225 mm)	CW	46.5" (1180 mm)
B-laden	34.6" ( 880 mm)	E	67.1" (1705 mm)	OW	85.5" (2170 mm)

Dimensions	Dimensions				Turning circle wall to wall—ft(m)	Kerb Weights * (Estimated)			
	Variant	WB	CA	AF		OAL	Front	Rear	Total
Chassis cab		in. (mm)	in. (mm)	in. (mm)	in. (mm)	47.5 (14.5)	lb. (Kg)	lb. (Kg)	lb. (Kg)
Chassis cab		134(3400)	122(3100)	68(1730)	252(6410)	53.5 (16.3)	4360 (1980)	2350 (1070)	6710 (3050)
		156(3960)	144(3660)	76(1930)	282(7170)		4460 (2025)	2555 (1165)	7015 (3190)

\*D1011 21400 lb. (9715 Kg) GVW with 6-600-S Trans.  
Subtract in 134 in. w.b. for 4-410-S Trans.  
140 (63.6) 75 (34.0) 215 (97.6)  
Add for diesel option 156 in. only  
410 (186) — — 410 (186)

NOTE: ALL FORD KERB WEIGHTS INCLUDE FULL OIL, FUEL WATER, ETC.

#### WEIGHT DISTRIBUTION (lbs.-Kg)

	Front	Rear	Trailer	Total
Chassis/ Cab Weight				
Body & Equipment Weight				
	Total			
	GVW/GCW			
	Payload Capacity			

#### PRICING:

	Dollars
Chassis/Cab	
Optional Eqpt.	
Body	
Total	
Trade	
Balance	

# SPECIFICATIONS

## Ford D Series Custom Forward Control Trucks D1011 Petrol

### ENGINE:

Ford 300 CID (4.9 litre) 6 cyl. OHV petrol.

RAC Rating:	38	38
Bore/Stroke inches (mm)	4.00 x 3.98 (101.6 x 101.1)	4.00 x 3.98 (101.6 x 101.1)

Compression Ratio:	7.9:1	7.4:1
Gross BHP — DIN:	130 @ 3400	129 @ 3200
Net BHP — DIN:	117 @ 3400	115 @ 3200
Gross Torque (lb/ft)	244 @ 1600	232 @ 1600
Net Torque (lb/ft)	236 @ 1600	224 @ 1600

Features: Full flow replaceable oil filter, replaceable paper element air cleaner, thermo-syphon pump assisted cooling system, vacuum governor.

Opt. 10 in. (254 mm) Cyclopak with stackpipe.

### AXLE FRONT:

Ford. Type 75. 7500 lb. (3400 Kg) capacity. Solid I beam.

### AXLE REAR:

With 4-410-S trans — Ford. Type 150. Single speed. 14B hypoid. 15000 lb. (6800 Kg) capacity. Ring gear dia. 13.875 in. (350 mm). Ratio 6.17:1.

With 6-600-S trans — Ford. Type 168. Single speed. 15C. Spiral bevel. 16800 lb. (7630 Kg) capacity. Ring gear dia. 14.875 in. (380 mm). Ratio 6.14:1.

### BRAKES:

SERVICE — Single line air hydraulic with Clayton Dewandre "Air Pak" booster. Fitted with air pressure gauge and low pressure warning buzzer.

Brake Size: With 150 RA — 15.25 x 3.5 in. (387 x 89 mm) front; 15.25 x 4.25 in. (387 x 108 mm) rear. Total lining area 435 sq. in. (2840 sq. cm.).

With 168 RA — 15.25 x 3.5 in. (387 x 89 mm) front; 15.5 x 5 in. (393 x 127 mm) rear. Total lining area 479 sq. in. (3088 sq. cm.).

Park Brakes: Mechanical by rod and cable from pistol grip twist release multi pull dash mounted lever to rear wheels.

### CHASSIS:

Parallel channel sections of 134 in. (3400 mm) w.b. 9.5 x 2.97 x 0.21 in. (241 x 75 x 5 mm) 8.43 cu. in. (138.1 cu. cm.) sect. modulus. 34500 p.s.i. (2425 Kg per sq. cm.) yield strength steel. 156 in. (3960 mm) w.b. 9.58 x 2.97 x 0.25 in. (243 x 76 x 6 mm) 10 cu. in. (164 cu. cm.) sect. modulus. 51000 p.s.i. (3620 Kg per sq. cm.) yield strength steel.

### CLUTCH:

Single dry plate, moulded asbestos lining with hydraulic operation. Diameter — 13 in. (330 mm). Facing area 183.4 sq. in. (1183 sq. cm.).

### DRIVELINE:

2 pce. — 3½ in. (88.9 mm) dia. and 3 in. (76.2 mm) dia. shafts with Hardy Spicer 1510 series universal joints and centre bearings.

### CAB:

Ford phase 1 custom cab.

Features: Three seat all steel forward control tilt.

### INTERIOR

Fully adjustable driver's seat.  
Dual passenger seat.  
Washable PVC headlining.  
Trimmed rear cab panel.  
PVC trimmed engine cover insulation.

Interior light.  
Door lock (driver's side).  
Chrome interior door pull handles.  
Chrome assist handles.  
Opening quarter vents.  
Full drop door glass.  
Toughened glass with zoned area in front of driver.

Facia crash pad.  
Padded full width interior sun visors.  
Rubber floor mat retained with aluminium scuff plates.

Finish: Exterior — Electrocoat undercoating process with baked enamel finish.  
Interior — High grade expanded vinyl trim.

Lockable glove compartment.  
Heater/demister.  
Door storage compartment (driver's side).  
Two coat hooks.  
Safety belt anchorages, driver's belt.  
Ashtray.

### EXTERIOR

Dual rear view mirrors.  
Dual electric horns.  
Dual speed self parking electric windshield wipers.  
Windshield washers.  
Front towing eyes.  
Windshield surround (bright metal).  
6" deep front bumper.  
Front mud flaps.

### ELECTRICAL:

12 volt negative earth system.  
Battery — 12 volt. 57 A.H. 9 plate.  
Alternator — 40 amp. Prestolite.  
7" (177.8 mm) headlamps.  
Park lamps.  
Front direction indicators.  
Rear combination stop-tail/turn and number plate lamps.  
Instruments and equipment — see cab.

### FUEL CAPACITY:

Rectangular tank mounted on right hand frame. 20 gal. (91 litres) capacity.

### SHOCK ABSORBERS:

Double acting telescopic front only.

### SPRINGS FRONT:

6700 lb. (3040 Kg) total axle capacity. 7 leaves. Spacers and shock absorber attachment. 57 x 3 in. (1448 x 76.2 mm) main leaf.

### SPRINGS REAR:

Main — with 4 speed, 9400 lb. (4270 Kg) total axle capacity. 11400 lb. (5180 Kg) total axle capacity. 10 leaves plus 2 radius leaves. 46.5/56 x 3 in. (1181/1422 x 76.2 mm) main leaf. Auxiliary — 4500 lb. (2040 Kg) capacity per axle. 4 leaves 35.5 x 3 in. (902 x 76.2 mm) main leaf.

### STEERING:

Bishop 3000 worm and peg. 24:1 ratio. 19.8 in. (500 mm) dia. steering wheel.

### TRANSMISSION:

Std. — Ford 6-600-S (6 speed all synchro).  
Ratios — 7.51, 4.58, 2.85, 1.87, 1.31, 1.00:1 (Rev. 7.18:1).  
Opt. — Ford 4-410-S (4 speed all synchro).  
Ratios — 6.49, 3.21, 1.67, 1.00:1 (Rev. 7.4:1).

### WHEELS:

Seven in number including spare rim in winch type carrier on near side frame. Size 20 x B6.0 - 8 stud. 10.8 bolt circle. 5.60 offset. 3 piece disc.

### TYRES:

8.25 - 20 x 12 front and rear; (23000 lb. (10440 Kg)).  
8.25 - 20 x 12 front; 8.25 - 20 x 14 rear (23600 lb.) (10720 Kg).  
8.25 - 20 x 10 front and rear; (21400 lb.) (9715 Kg).  
4 speed only — 7.50 - 20 x 8 front; 7.50 - 20 x 10 rear (19000 lb) (8630 Kg).  
7.50 - 20 x 8 front and rear (15000 lb. (6810 Kg)) 16000 lb. (7270 Kg).  
7.50 - 20 x 8 front; 7.50 - 20 x 10 rear (18000 lb. (8170 Kg)).  
Spare tyre optional.

### INSTRUMENTS

Printed circuit instrument cluster.  
Fused lighting circuit.  
Large instrument cluster with —  
Speedometer/odometer  
Fuel gauge  
Battery condition meter  
Water temperature gauge  
Oil pressure gauge  
Air pressure gauge  
Audible low pressure warning buzzer  
Also warning lights for —  
Main beam  
Charge indicator  
Direction indicator  
Parking brake  
Optional — Laminated Windshield —  
— Chassis coil.

The specifications referred to herein were in effect at the time this publication was approved for printing; however, Ford Motor Company of Australia Limited and/or Ford Sales Company of Australia Limited reserve the right, subject to the laws of any state or territory and the regulations of any competent authority which may be applicable at the time, at its discretion and without notice, to change specifications and prices of the products referred to herein at any time and without incurring any liability whatsoever to any purchaser thereof. Some of the items illustrated or referred to in this publication are optional at extra cost.

