

# FORD

## F250 4x4 Styleside

Optional — chassis cab model

|                                |         |            |
|--------------------------------|---------|------------|
| Maximum gross vehicle mass     | 3493 kg | (7700 lb)  |
| Maximum gross combination mass | 4695 kg | (10350 lb) |
| Wheelbase length               | 3379 mm | (133 inch) |



### AXLE FRONT

Dana 6 CF HD drive axle; full floating; hypoid;  
216 mm (8.5 inch) diameter ring gear, Ratio 4.09:1  
Fitted with Lockomatic free wheel hubs  
Capacity 1610 kg (3550 lb)

### AXLE REAR

Dana 60; full floating; hypoid, Ratio 4.1:1  
248 mm (9.75 inch) diameter ring gear  
Capacity 2400 kg (5300 lb)

### BRAKES

Service: Dual line power assisted hydraulic self adjusting drum brakes

Size: Front: 308 x 51 mm (12.125 x 2 inch)

Rear: 305 x 63.5 mm (12 x 2.5 inch)

Total Lining Area: 1468 sq.cm, (227.5 sq.in.)

Direct acting single diaphragm vacuum assistance unit

Park Brake: Cable operated to rear wheels by dash-mounted Orndelthm lever

### CHASSIS

Pressed steel; ladder construction  
Section 178 x 75 x 5.4 mm (7 x 2.98 x .212 inch)

### CLUTCH

279 mm (11 inch) diameter single plate; Semi-centrifugal pressure plate; hydraulic actuation  
Facing area 798 sq.cm, (124 sq.in.)

### DRIVELINE

1310 Series

### ELECTRICAL

12 Volt negative earth system

Battery 12 V 61 amp hour capacity

Alternator 40 amp capacity

7 inch (177.8 mm) headlamps with integral park lamps

Front direction indicators with side repeater lamps

Stop, tail, rear turn and reversing lamps with side repeater lamps

for turn and reversing functions

Hazard warning lights

Single horn

Door operated courtesy light

Dual two speed self-parking windshield wipers

Electric windshield washers

Instruments — Speedometer — odometer

Fuel gauge

Water temperature gauge

Oil pressure gauge

Ammeter

Warning lights for — brake pressure differential

high beam

direction indicator

### ENGINE

Ford 4.9 litre (300 CID) 6 cylinder OHV petrol engine

Taxable horsepower 38

Compression ratio 7.9:1

Bore/Stroke 101.6/101 mm (4/3.98 inch)

\*Gross power at specified RPM 95.5 kW @ 3600

128 BHP @ 3600

Nett power at specified RPM 85 kW @ 3400

114 BHP @ 3400

Gross torque at specified RPM 317 Nm @ 1600

234 lb/ft @ 1600

Nett torque at specified RPM 301 Nm @ 1600  
222 lb/ft @ 1600

\*Engine performance figures based on SAE J-245 dynamometer test procedure — standard conditions of 150 m (500 ft) altitude and 29.4°C (85°F) air intake temperature.  
Features — full flow replaceable oil filter; engine mounted paper element air cleaner; pressurised cooling system; 470 mm (18.5 inch) diameter fan; automatic choke control; uses standard fuel

### FUEL SYSTEM

72 litre (16 gallon) fuel tank mounted in cab

Mechanical fuel pump

### FRONT SPRINGS

Semi-elliptic type; 6 leaf

1320 kg (2910 lb) pad capacity per axle

### REAR SPRINGS

Semi-elliptic type; 9 leaf; progressive rate

2177 kg (4800 lb) pad capacity per axle

### SHOCK ABSORBERS

Telescopic type — front and rear axles

### STEERING

Worm and roller, Ratio 24.2:1

419 mm (16.5 inch) diameter steering wheel

### TRANSMISSION

Main — New Process 435 model four speed with floor change

Synchromesh on 2, 3, 4 gears.

Ratios 6.69; 3.34; 1.66; 1.00:1; Reverse 8.26:1

6 Bolt SAE pattern P.T.O. mounting on R.H. side

Transfer — New Process 205 model two speed with floor change

Ratios 1.96; 1.00:1

6 Bolt SAE pattern P.T.O. mounting on R.H. side

### WHEELS

5.5F x 16 disc with 14 mm (.56 inch) offset

8 Stud — 5 supplied

### TYRES

7.50 x 16 x 8 PR, Light truck tube type

All-purpose lug tread pattern, 4 supplied

Spare wheel carrier: under frame at rear

### CAB

Features —

All steel construction

Full width adjustable bench seat

Inertia reel seat belts RH and LH

Centre lap seat belt

Zone toughened windshield

Full width padded sun-visor

Heater/demister

Glove compartment

Two external mirrors

Ash tray

Coat hook

Styleside Features —

Inner and outer skin construction to resist damage

Galvanised side panels for rust protection

Curved wall to floor transition to resist dirt and

rust catching areas

Single hand tail gate operation

Provision for stake body extensions

### OPTIONAL EQUIPMENT

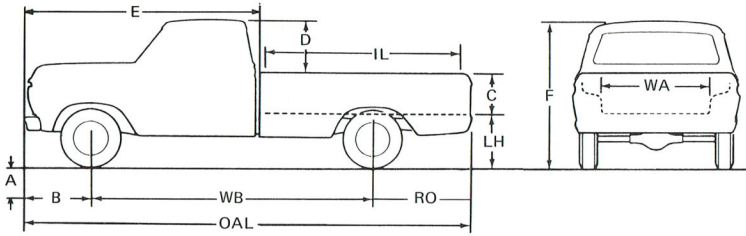
Cyclopac air cleaner

7.50 x 16 x 8 PR LT, Highway tread pattern tyres

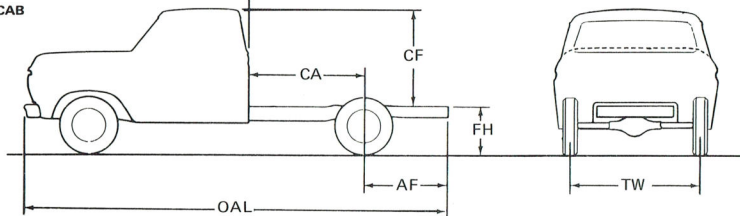
Spare tyre

# F250 4x4 Styleside

## STYLESIDE



## CHASSIS CAB



Dimensions in mm (inches).

| STYLESIDE   |      |          |              |      |        |                 |      |        |
|-------------|------|----------|--------------|------|--------|-----------------|------|--------|
| A           | 241  | ( 9.5)   | F unladen    | 1967 | (77.5) | LW (load width) | 1778 | (70)   |
| B           | 806  | ( 31.75) | WB           | 3379 | (133)  | WA (wheel arch) | 1290 | (50.8) |
| C           | 490  | ( 19.3)  | OAL          | 5359 | (211)  | LH unladen      | 965  | (38)   |
| D           | 615  | ( 24.2)  | RO           | 1176 | (46.3) | LH laden        | 813  | (32)   |
| E           | 2756 | (108.5)  | Front bumper |      |        | IL              | 2494 | (98.2) |
| Front track | 1666 | ( 65.6)  | width        | 2022 | (79.6) |                 |      |        |
| Rear track  | 1651 | ( 65)    |              |      |        |                 |      |        |

| CHASSIS CAB |      |      |     |      |         |            |     |        |
|-------------|------|------|-----|------|---------|------------|-----|--------|
| CF          | 1194 | (47) | AF  | 1016 | (40)    | W          | 864 | (34)   |
| CA          | 1422 | (56) | OAL | 5215 | (205.3) | FH unladen | 876 | (34.5) |

|  |                  |
|--|------------------|
| Max body length (subject to State regulations) | 3048 mm (120 in) |
| Turning circle (kerb to kerb)                  | 15.8 m (51.9 ft) |
| Swept circle (wall to wall)                    | 16.1 m (53 ft)   |

### Calculated Kerb Weights – kg (lb)

|        | F           | R          | Total       |
|--------|-------------|------------|-------------|
| S/side | 1267 (2794) | 813 (1792) | 2080 (4586) |
| C/cab  | 1265 (2789) | 625 (1378) | 1890 (4067) |

### WEIGHT DISTRIBUTION

|                               | Front | Rear | Trailer          | Total |
|-------------------------------|-------|------|------------------|-------|
| Chassis/<br>Cab Weight        |       |      |                  |       |
| Body &<br>Equipment<br>Weight |       |      |                  |       |
|                               |       |      | Total            |       |
|                               |       |      | GVM/GCM          |       |
|                               |       |      | Payload Capacity |       |

### PRICING

|                | Dollars |
|----------------|---------|
| Chassis/Cab    |         |
| Optional Eqpt. |         |
| Body           |         |
|                |         |
| Total          |         |
| Trade          |         |
| Balance        |         |

Metric and Imperial dimensions equivalent within implied limits.

The specifications referred to herein were in effect at the time this publication was approved for printing; however, Ford Motor Company of Australia Limited and/or Ford Sales Company of Australia Limited reserve the right, subject to the laws of any state or territory and the regulations of any competent authority which may be applicable at the time, at its discretion and without notice, to change specifications and prices of the products referred to herein at any time and without incurring any liability whatsoever to any purchaser thereof. Some of the items illustrated or referred to in this publication are optional at extra cost.

