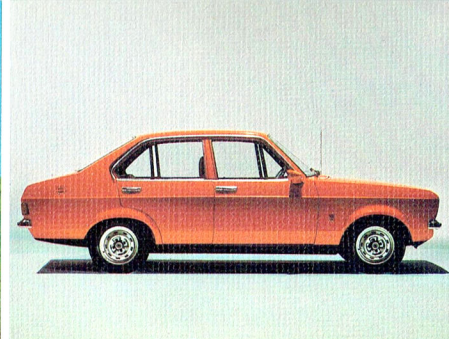


ESCORT

THE EUROPEAN
FORMULA





Herr Uwe Bahnsen of Ford of Germany's Cologne Design Centre.



The European Formula.

When you create a car for the European market where they've been buying small cars for three generations, you don't compromise.

Ford of Germany's Cologne Design Centre didn't—they brought together some of the finest automotive talent in Europe.

In Germany, Chief Designer, Uwe Bahnsen, created a low-waisted car with sweeping glass area all around and fresh, clean, functional styling.

His fellow countryman, Dr. Hans Engels, was given the responsibility of developing the car's body engineering.

Britain's Tony Palmer took over all aspects of ride and handling, the subject of comfort was referred to Ron Bradshaw.

The result is the new European Formula Ford Escort. Distinctively styled. Roomy and comfortable inside without being a big car outside. With excellent ride and control.

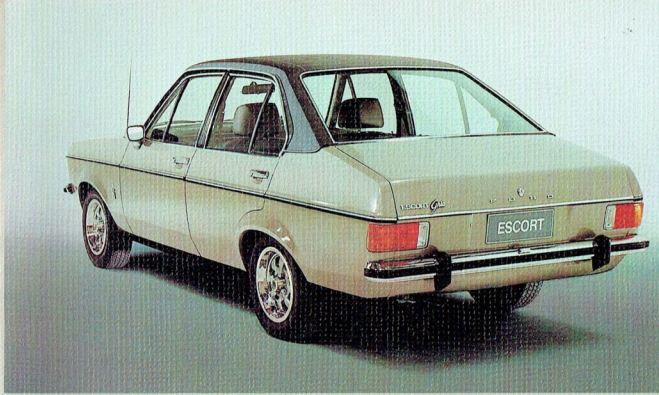
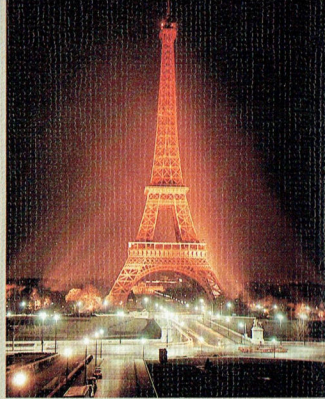
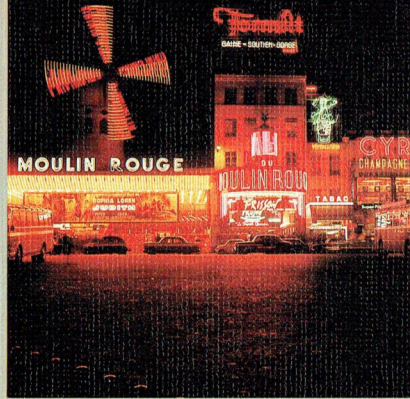
Within three months of its release, European Formula Escort became the best selling car in Europe.

Now, new Ford Escort is in Australia—built to the European Formula.

There are four models: Escort L 2-door, Escort XL 2-door and XL 4-door and 4-door Escort Ghia.

All have radial tyres, front power disc brakes, carpets and reclining bucket seats as standard equipment.

Escort L & XL are exceptionally well appointed. Escort Ghia is an all-new model giving you the opportunity of buying true luxury in the small car class.



Escort Ghia ... the luxury European.

New Ford Escort Ghia has European flair in its stylish, functional body ... a responsive 1.6 litre engine ... and a magnificently appointed luxury interior.

Exterior equipment includes: Tinted side and rear windows ... a vinyl roof ... a heated rear window and square halogen headlights ... steel belted radial tyres ... front power disc brakes ... rubber-filled body side moulding and rubber bumper bar inserts together with rubber over riders to prevent light contact damage ... highly styled road wheels and trim rings ... the distinctive Ghia emblem.

Luxury, comfort, and a complete level of equipment . . .

You'll find it in Ghia.

Luxury is more than apparent in Escort Ghia.

You'll find its interior surprisingly spacious, with fully imported, deeply contoured and cushioned bucket seats upholstered in luxurious savannah cloth, which recline to any position you care to relax in and have separate adjustable headrests. There are deeply padded doorpull armrests on all four doors. The two-spoke steering wheel has a soft-feel moulded surround. At your feet is rich, colour-keyed, cut-pile carpet—and all four doors have carpeted kickpads.

Up front, there's a European award-winning instrument cluster (which includes a tachometer) and a handsome dash veneered with genuine wood. Two-speed power ventilation is right at your fingertips. So are column-mounted control stalks for indicators, headlights, headlight flashers, windscreen washers, wipers, and horn.

A push-button radio and an electric clock are set into the front console as standard equipment.

Sound deadening material has been used extensively (even under the instrument panel) to give you a quieter ride—everything has been planned for your comfort and convenience.

In fact, you can compare Ghia's list of appointments and features with that of cars twice its price.

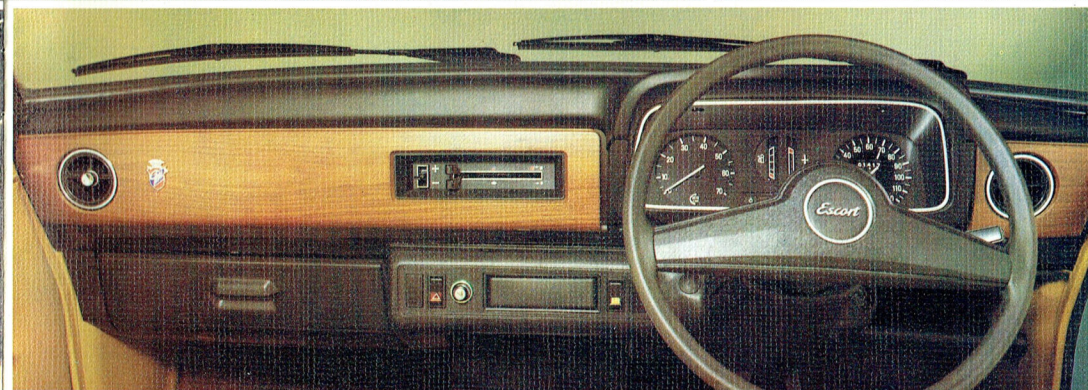
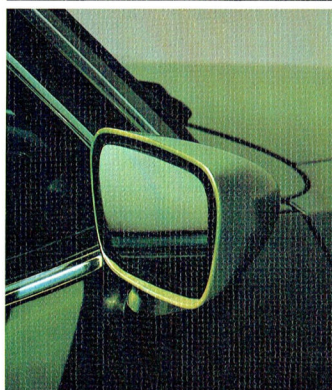
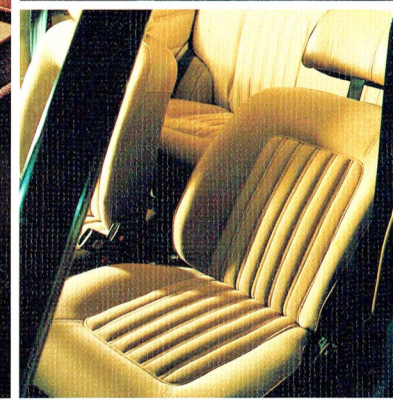
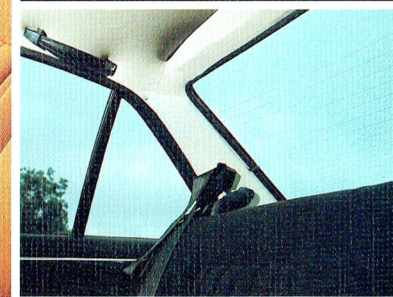
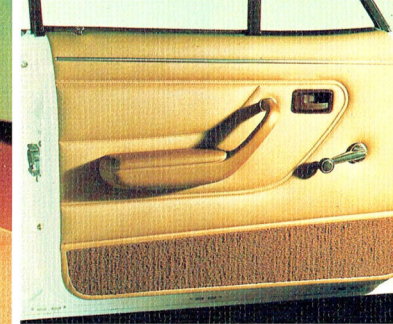
Additional items not previously mentioned are:

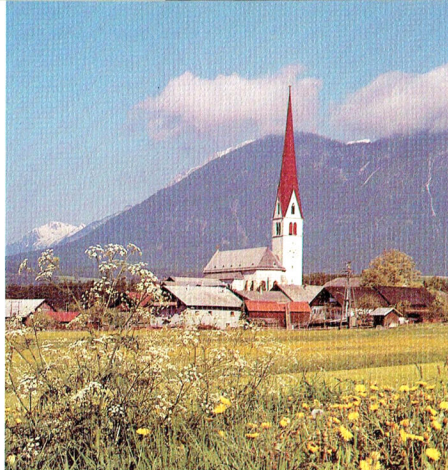
- Passenger side glove box
- Inertia reel seat belts
- Fully illuminated heater controls
- Prismatic "Day/Night" rear view mirror
- Front and rear grab handles
- Passenger side exterior mirror
- Driver's side remote control exterior mirror
- Hi/Lo intensity panel lamp lighting
- 46 Amp/hour battery
- Dual horns
- Laminated and tinted windscreen
- Hazard flashers.

Optional equipment available is listed on Page 15.

Illustrated: Interior highlights of Escort Ghia sedan.

Printed August 1976





Europeans expect a lot from cars.

Escort XL lives up to great expectations.

Whether you choose a 2 or 4-door, Escort XL comes to you with European luxury and flair in all the things that matter. The proven and economical 1.6 litre engine is geared to a sporty floor shift — or optional T-bar automatic.

Take the wheel and you're in full control with responsive rack and pinion steering, radial tyres and front power disc brakes. Look around and you'll find there's a large glass area for better vision.

Stretch out, and whether you're passenger or driver, you'll find the interior surprisingly roomy.

Flick on the headlights and make an illuminating discovery — halogen bulbs for improved light output.

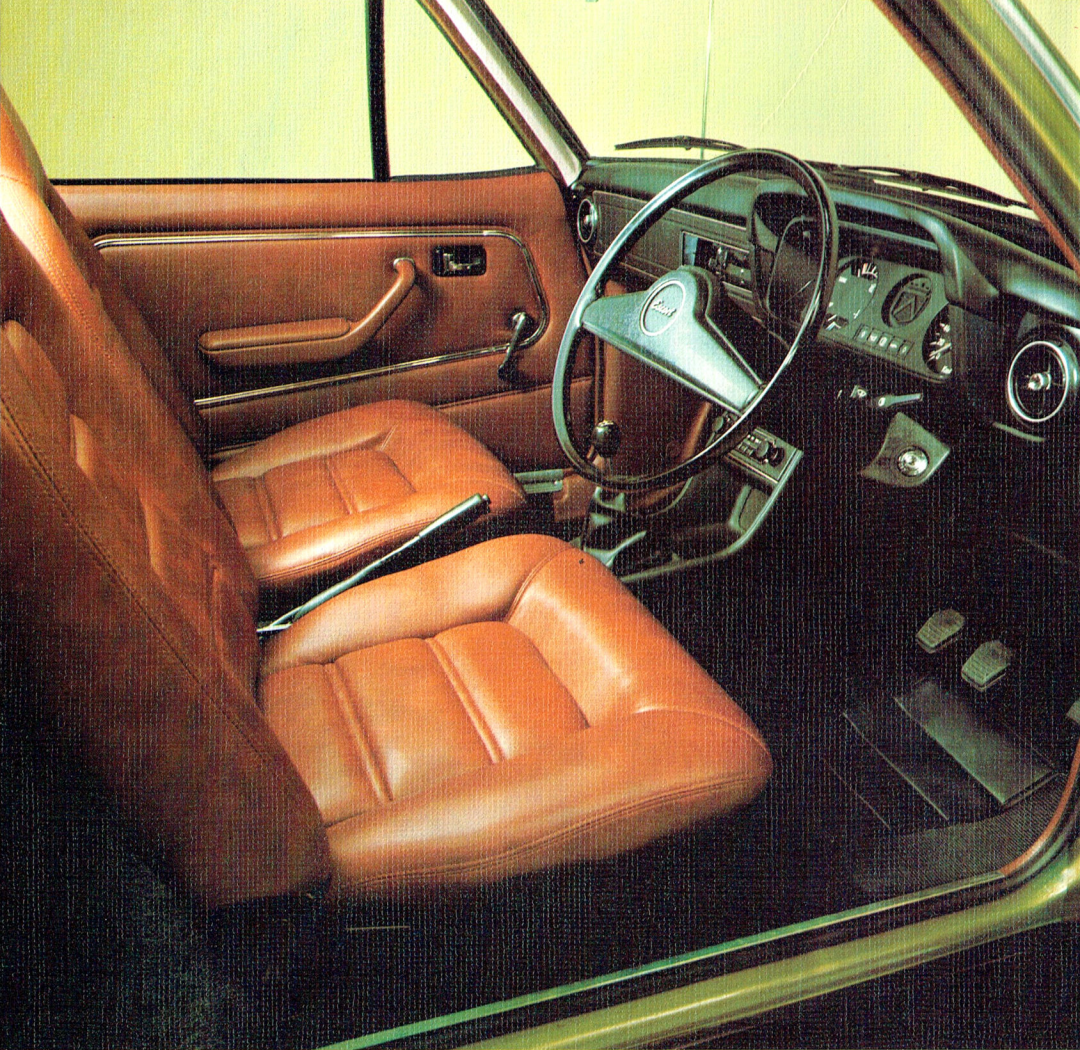
There's more for you to discover — rubber inserts on the bumper bars . . . a spacious boot . . . a 46 Amp/hour battery . . . new 13" wheels . . . a heated rear window demister . . . hazard flashers . . . in fact, the more you look around, the more you'll find to get excited about!

And as a hidden extra, we've used sound deadening materials throughout the car — to give you quiet satisfaction as you drive.

Above: Family-size boot capacity of .29m³ (10.3 cu. ft.) — enough for the 11 pieces of luggage illustrated.

Printed August 1976





In Europe, good design is a way of life.

We believe that the Escort interior has received the most comprehensive design attention ever paid to a car in its class. It shows in the large instruments, simplified graphics and improved illumination of the R module instrument cluster . . . in the placement of column-mounted stalk controls right at your fingertips for indicators, headlights, headlight flashers, windscreen wipers, washers and horn.

It shows in Escort XL's luxury items such as the push-button AM radio set into the front centre console . . . loop-pile carpet . . . reclining bucket seats . . . the prismatic Day/Night rear vision mirror . . . the facelevel ventilation with its added demisting capability and in the heating system with its separate 2-speed fan and fully illuminated slide controls.

It shows in XL's thoughtful features, like a tinted rear window for extra passenger comfort . . . in the inbuilt heating elements which provide rear window demisting . . . and in the luggage compartment light.

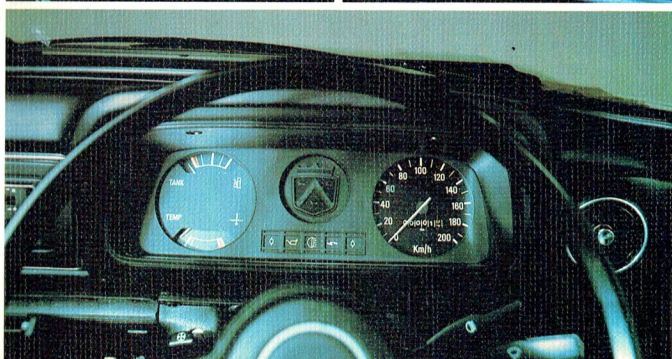
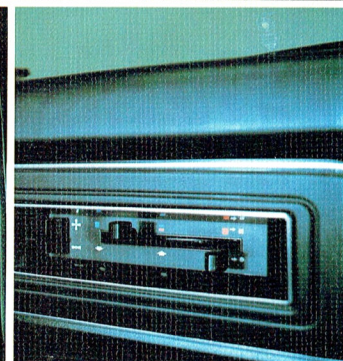
Other standard equipment in the XL includes:

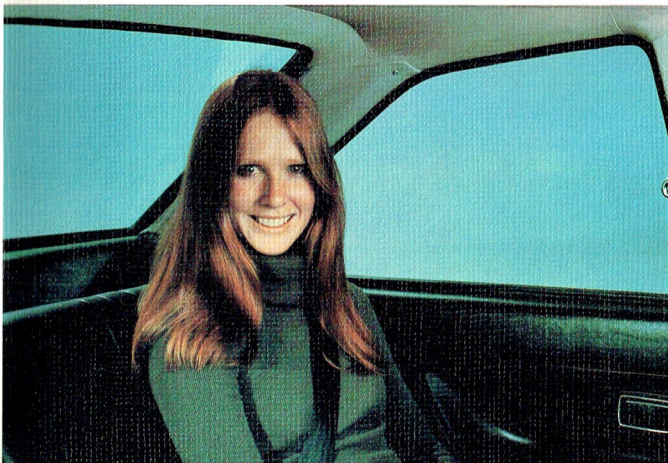
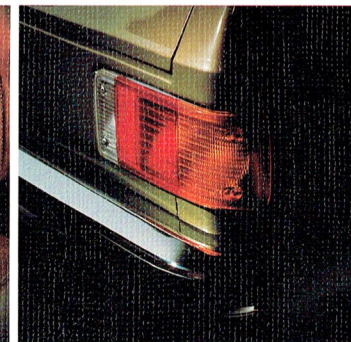
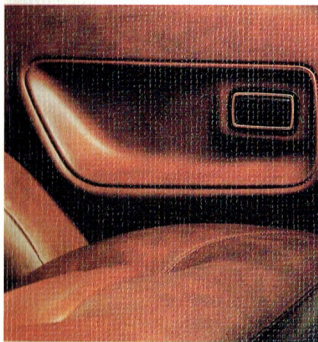
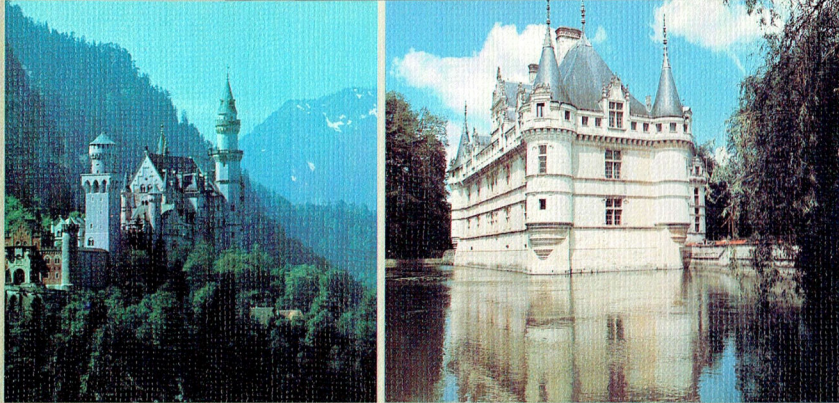
- Front and rear grab handles
- Soft-feel instrument panel applique
- Front inertia reel seat belts
- Doorpull armrests on all doors
- Large parcel tray
- "Eyeball" type air vents
- Separate demist nozzles
- Hi/Lo intensity panel lamp lighting
- Hazard flashers.

Optional equipment available is listed on Page 15.

Illustrated: Standard Equipment highlights of Escort XL 2 and 4-door sedan.

Printed August 1976





Even European economy cars are expected to be of a high standard.

Escort L is.

The comfort of carpet and reclining bucket seats is obvious the moment you take the wheel of Escort L.

But, there's a lot about Escort L that really isn't all that obvious.

Take the new black front valence panel—it's styled the way it is to act as an air dam spoiler to both improve engine cooling and smooth out underbody airflow.

The windscreen wipers—they're black to reduce potential glare.

The revised suspension—it's suited to rough country road conditions and gives you firm, sure grip on the road at all times.

The front brakes—big 247 mm (9.7") power discs.

The facelevel ventilation system—it has a demist capability and is so efficient it changes the air in the car every 20 seconds.

And the attention given to sound insulation—sound deadening materials have been used extensively throughout the car—even on the clutch pin to stop noise transmission along the clutch cable!

These are the hidden improvements—others are more obvious, like the rear seat headroom . . . two-spoke steering wheel . . . full wrap over door trims with luxury door pull armrests . . . a tinted rear window . . . warning jewels for indicators, alternator, oil pressure and high beam lights.

And you'll find big 330 mm (13") wheels with radial tyres.

Other features include:

- Proven 1.6 litre cross-flow engine geared to a sporty 4-speed floor shift
- Large boot capacity and rear seat leg room
- Hi/Lo intensity panel lamp lighting
- Column-mounted control stalks for lane change/turn indicators, hi/lo beam headlights, flashers, electric windscreen washers, 2-speed wipers, horn
- Prismatic interior rear view mirror
- 46 Amp hour battery
- Inertia reel seat belts
- Fully illuminated slide heater controls.

Optional equipment available is listed on Page 15.

Opposite left: Escort L sedan.
Left: Escort L standard equipment features.

Printed August 1976

Escort standard features.

All Escorts are not the same — in fact you have four models to choose from.

But, all Escorts do have a lot in common. First and foremost, they're all built to the European Formula.

Secondly, all Escorts are now built with the power and convenience of a 1.6 litre engine to give you the responsiveness you need and still maintain four cylinder economy. Thirdly, they all have an impressive array of standard equipment — the highlights we've pictured here are:

1. Parts of the XL interior — a new two-spoke steering wheel, practically designed for easy instrument reading (a moulded soft-feel surround on Ghia) ... the convenience of column-mounted stalks — to put controls at your fingertips for indicators, headlights, headlight flashers, 2-speed wipers and electrically operated 'demand-type' windscreen washers and horn ... in the front centre console an AM pushbutton radio (XL and Ghia).

2. Radial ply tyres on 330 mm (13") wheels are standard on all models. Steel-belted YR78 radials are standard on Ghia. 155SR x 13 radials standard on L and XL models. (Illustrated, YR78 steel belted radial tyre.)

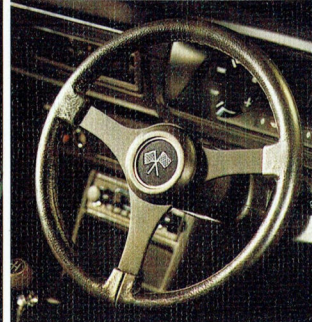
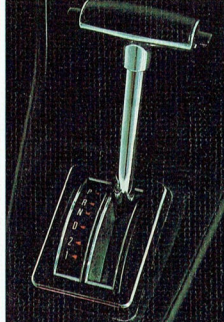
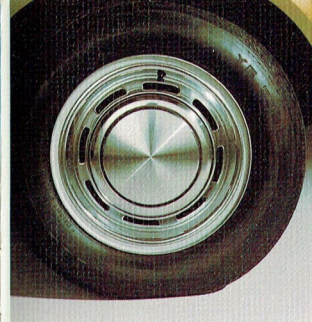
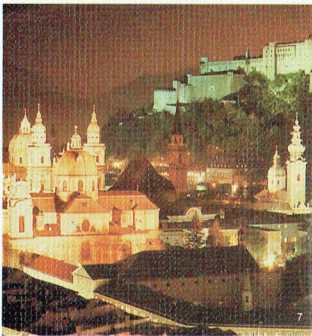
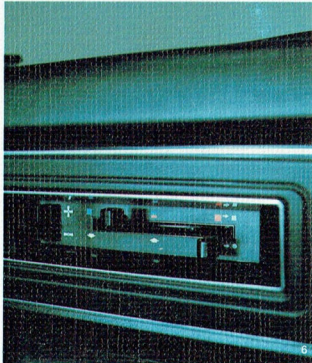
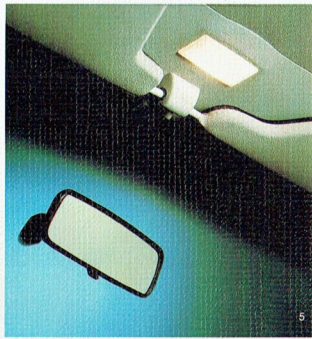
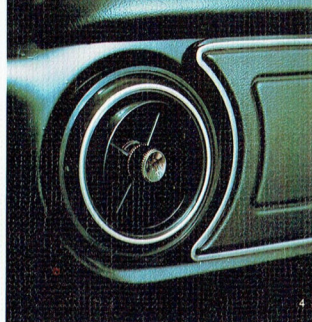
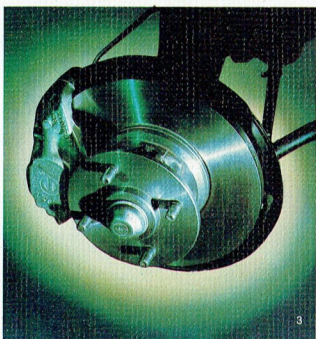
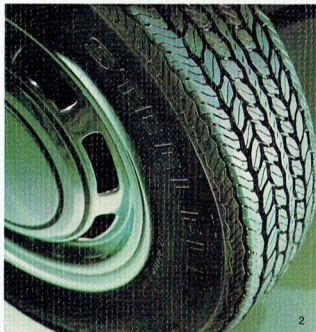
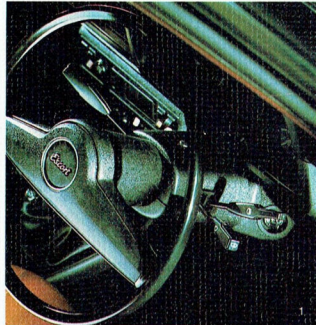
3. Big 247 mm (9.7") front power disc brakes — standard on all models.

4. New 'eyeball type' air vents — standard on all models and part of the ventilation system which is powered by a 2-speed fan, provides air at face level, has a demisting capability and is so efficient that it changes the air in the car every 20 seconds.

5. A prismatic 'Day/Night' interior rear vision mirror which safely breaks away under accident conditions ... an interior courtesy light ... padded, reversible colour, safety sun visors — standard equipment on all models.

6. Illuminated heater controls for safe and convenient night driving.

7. Just a reminder that this is European Formula Escort we're talking about!



Full wheelcovers

C3 T-bar Automatic transmission

GS Pack steering wheel

Rubber bumper over riders

Options.

A range of options is available, so you can personalise your new European Formula Escort. Appearance, convenience, safety and performance items are available — including the special lightweight C3 Automatic transmission.



GS Rally Pack.

This exciting option includes, tachometer, soft feel 3-spoke steering wheel, driving lights, sports road wheels, bold bodyside stripe and black nylon coated bumpers with rubber over riders.

OPTION	L	XL	Ghia
C3 Automatic transmission	O	O	O
RHS Remote control exterior rear view mirror	O	O	STD
LHS exterior rear view mirror	O	O	STD
Heated rear window	O	STD	STD
Sports road wheels	O	O	STD
Vinyl roof	O	O	STD
AM Radio	O	STD	STD
AM/FM Mono Radio	O	O	O
AM/FM Multiplex radio (1)	O	O	O

OPTION	L	XL	Ghia
Metallic paint	O	O	O
Laminated windscreen (tinted/band)	O	O	STD
GS Rally pack	O	O	NA
Driving lights (2)	O	O	O
Protection group	O	O	STD
Full wheelcovers	O	O	NA
Radial ply tyres 155 SR 13	STD	STD	NA
— YR78 steel belt	O	O	STD
— ZR70 steel belt	O	O	O

(1) Incorporates 2 speakers — in rear package tray

(2) When driving lights option fitted, front rubber over riders are also fitted for increased protection.

STD Standard equipment on this series. O — Optional at extra cost. NA — Not available this model.

Europeans like to play it safe.

Escort does.

Here are some of the safety features you'll find as standard equipment in European Formula Escort:

- For better visibility, there's large glass area and slim door and window pillars
- Radial tyres
- Power disc brakes
- Prismatic Day/Night interior rearview mirror that yields on contact under accident conditions
- Padded safety sun visors
- Inertia reel front seat belts
- Column-mounted stalks to put controls at your fingertips
- Collapsible steering column
- Safety-styled, heavily padded steering wheel centre
- Safety glass in all windows
- Zone toughened windshield
- Electric windscreen washers
- 2-speed windscreen wipers
- 2-speed, fresh air Heater/Demister
- Headlamp flasher
- Anti-tip device on front seats
- Padded instrument panel
- Reversing lights
- Front bucket seats incorporating head restraints.

Specifications

Engine:

Engine displacement (cc) 1598
Compression ratio 9.0:1
Bore (mm) 80.98 mm
(3.19")

Stroke (mm) 77.62 mm
(3.05")

Bearings 5

Carburettor Single-barrel

Engine Design:

1600 engine; 4-cylinder OHV cross-flow Bowl-in-piston design featuring 5 main bearing crankshaft; valves pushrod operated; mechanical diaphragm type fuel pump; single-barrel carburettor.

Gear Ratios to 1:

1st — 3.65, 2nd — 1.97, 3rd — 1.37,
4th — 1.1, Reverse — 3.66.

Brakes:

Front — big 247 mm (9.7") servo assisted discs.
Rear — drum with bonded lining.

Suspension:

Independent coil springs with telescopic shock absorbers. Rear — semi-elliptic springs with hydraulic double action upright shock absorbers.

Wheels and Tyres:

124 mm (4.5") wide x 330 mm (13") wheels. All models.
L & XL — 155SR x 13 radial ply tyres.
GHIA — YR78 x 13 steel belted radial ply tyres.

PLEASE NOTE:

The illustrations and information set out in this brochure were correct when approved for printing. However, Ford Motor Company of Australia Limited and/or Ford Sales Company of Australia Limited reserves the right to discontinue or change at any time, the specifications and/or the design of any or all of the vehicles illustrated or described in this brochure without incurring any obligations. Some features shown or described are optional at extra cost. Some options are required in combination with other options. Always consult your authorised Ford Dealer for the latest, most complete information on models, features, options, specifications, prices and availability.

FORD SALES COMPANY OF AUSTRALIA LIMITED
1735 Sydney Rd., Campbellfield.

Printed August 1976



FORD ESCORT

