

FAIRLANE
Marquis



FAIRLANE
Marquis



A Classic is born.
New Fairlane Marquis . . . a masterpiece of personal luxury.
An inspiration of design . . .
A car which you will never tire of owning or driving.
A car which gives new dimension to the word luxury.







If you enjoy the pampering comforts of true limousine luxury new Fairlane Marquis has much to offer.

Marquis has been built with your complete comfort and luxury in mind.

Seating is of the highest calibre. With individually contoured twin comfort lounge seats upholstered in luxury cashmere cloth trim.

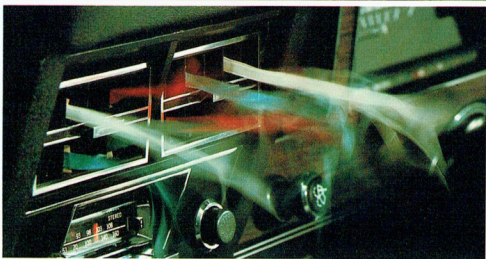
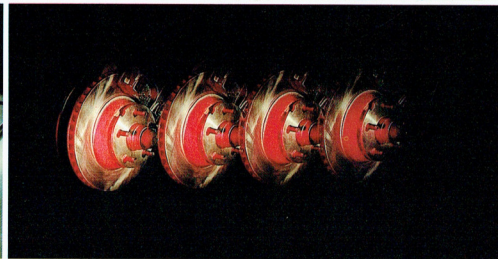
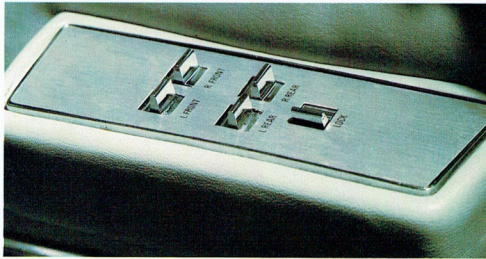
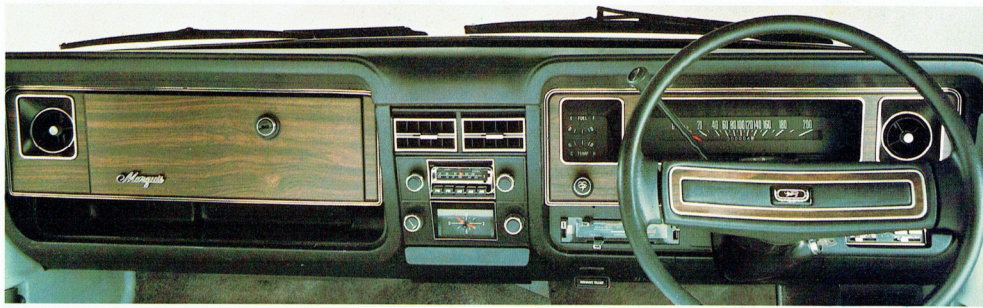
There are separate folding armrests in the front – and deeply padded and beautifully comfortable seating in the rear.

Carpets are cut pile and of superb quality.

For your year round climate control there's a fully integrated 'Select Air' air conditioning system. To minimise glare, all side and rear glass has been subtly tinted. And the front windscreen laminated for extra safety.

The radio has a power operated antenna.

Marquis boasts a clock with a special quartz crystal movement. Not to mention a luxuriously padded steering wheel – for both your safety and enjoyment.



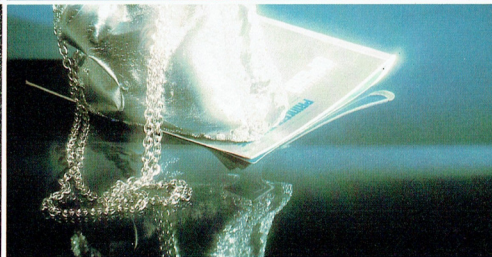
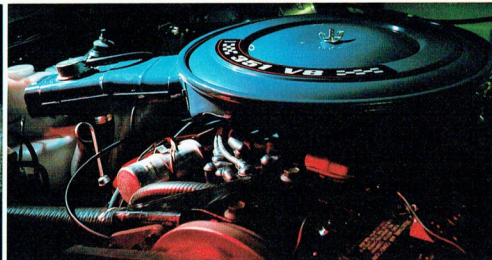
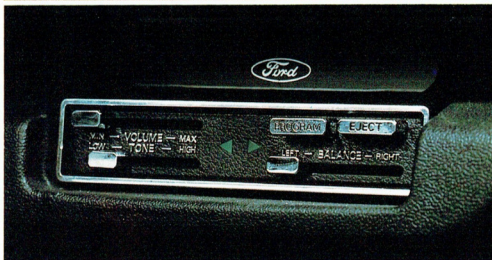
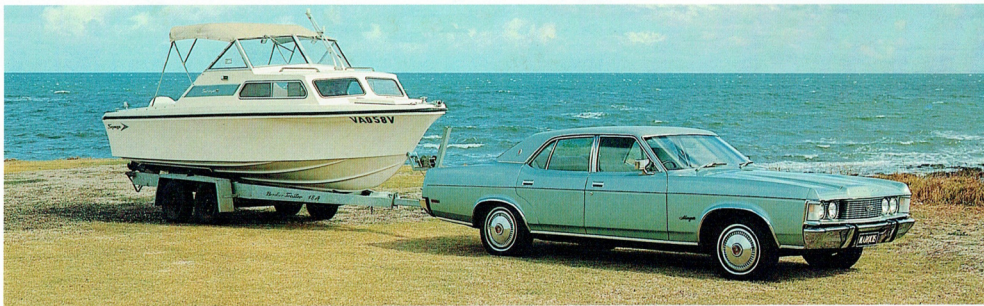
Fairlane Marquis is a luxury car in the grand tradition. A browse through just some of its many standard features will convince you of that.

Power operated windows. Individual controls with a driver override and master lock.

Four wheel power disc brakes. Front and rear inertia reel seat belts cleverly designed to retract out of sight when not in use. Windscreen wipers with special

intermittent control which activates them at either 3, 6 or 10 second intervals (especially useful in light rain and drizzle). Variable ratio power steering reduces fatigue yet gives you excellent road feel. For an extra measure of safety and convenience, long range halogen headlights, heated rear window demister, steel belted radial tyres, limited slip differential and extra bright reversing lamps are also included in Fairlane Marquis' impressive list of standard equipment.

Of course Marquis has been carefully engineered to offer superb all-round vision – an important safety feature in the design of any true luxury car.



Marquis' standard equipment list is so comprehensive, there is little need for options at extra cost.

However, some very useful and desirable features are available.

If you enjoy caravanning, own a boat or trailer, there are two special towing packs. One for towing weights up to 907 kg (2000 lbs.) The other for towing weights up to 1587 kg (3500 lbs).

For an extra measure of performance you can opt for the 5.8 litre (351 CID) engine at small additional cost.

Music buffs will appreciate the optional AM/FM radio which has a 4 speaker stereo reception for FM stations.

A separate cassette player is also available.

If you like to bring the outdoors inside without an uncomfortable draft, the sliding steel sunroof is ideal.

Finally, to make your new Fairlane Marquis an even more stunning car there is a new range of colours which have a rich metallic lustre.

ENGINE AND TRANSMISSIONS:

4.9 litre (302 CID) emissionised V8 engine matched to a column mounted Select-Shift Cruisomatic 3-speed transmission and a limited slip differential is standard equipment.

BRAKES AND TYRES:

4-wheel power disc brakes of 292 mm (11.5 inch) diameter and FR78S x 14 Black sidewall steel belted radial tyres.

TYRES:

4.9 Litre (302 CID)

- FR 78S x 14 Black sidewall steel belted radials fitted as standard equipment.

Optional Tyres on 4.9 litre

- FR78S x 14 White sidewall steel belted radials
 - FR70H x 14 Black sidewall steel belted radials.
- 5.8 Litre (351 CID)
- FR70H x 14 Black sidewall steel belted radials fitted as standard equipment and are the minimum size and specification for this engine.

FUNCTIONAL FEATURES:

Variable ratio power steering. Fully integrated air-conditioning. Push button radio with power aerial. Twin comfort front lounge seats with separate folding armrests - contoured rear seats with centre fold-a-way armrest. Intermittent windscreen wiper action. Quartz halogen headlights. Front and rear inertia reel seat belts with concealed mechanism. High protection bumpers with overrides front and rear. Bodyside protection mouldings. Tinted and laminated windscreen.

APPEARANCE FEATURES:

Vinyl roof (available in six colours). Distinctive full wheel covers. Tinted side and rear glass. Cut pile carpeted interior. Carpet in the luggage compartment.

CONVENIENCE FEATURES:

Power operated windows with driver master control. Passenger side map reading lamp. Twin spot dome

lamp. Electric clock. Foot operated parking brake. Remote control driver's and passenger's exterior mirrors. Rear window demister. Soft feel steering wheel. Sunvisor vanity mirror. Separate reversing lamps. Front parcel tray and driver's 'trinket' tray. Steering column control stalk for turn signals. Hi-lo beam and horn control. Prismatic day-night rear vision mirror. Boot and glove box lights. Rear ashtrays mounted on front seat backs.

DRIVER AND PASSENGER PROTECTION FEATURES:

4-wheel power disc brakes . . . Dual hydraulic brake system and warning light . . . Front and rear Inertia reel seat belts . . . Highbacked front seats . . . Recessed and padded instrument panel . . . Collapsible steering column . . . Impact absorbing steering wheel . . . Controlled collapse front end . . . Padded sun visors . . . Padded door pull armrests . . . Door-mounted grab handles . . . Thick laminated front windscreen and safety glass in all other windows . . . Wind shield mounted, breakaway anti glare interior rear view mirror . . . Exterior rear vision mirrors . . . Heated rear window demister . . . Quartz halogen headlights . . . Rear reversing lights . . . Rear side marker lamps . . . Wrap around front turn indicators . . . 2-speed electric windscreen wipers with push button washer control and intermittent wipe action . . . No lift - non reflective wiper blades . . . 3-speed heater demister . . . Dual tone horn . . . Steering column stalk control for hi-lo beam, headlight flasher, turn and lane change indicators and horn.

DIMENSIONS:

Overall length - 5181 mm (204")

Overall width - 1955 mm (77")

Overall height - 1366 mm (53.8")

Wheelbase - 2946 mm (116")

Front track - 1537 mm (60.5")

Standard fuel tank capacity - 79.6 litres (17.5 gallons)

Optional fuel tank capacity - 125.1 litres (27.5 galls.)

Boot capacity - 0.49 cubic metres (17.48 cu. ft.)

PLEASE NOTE:

The illustrations, information and specifications presented and referred to herein were correct at the time when this publication was approved for printing; however, Ford Motor Company of Australia Limited and/or Ford Sales Company of Australia Limited reserve(s) the right, subject to the laws of Australia and/or any applicable State or Territory thereof and/or the regulations of any competent authority which may apply from time to time, at their or its discretion, and without notice, to discontinue or change the specifications, design and prices of the products referred to herein and any options therefor at any time without incurring any liability whatsoever to any purchaser thereof. Some of the items illustrated or referred to herein are optional at extra cost. Some options may be required in combination with other options. Always consult your Ford Dealer for the latest information on models, specifications, features, prices, options and availability.

FORD MOTOR COMPANY OF AUSTRALIA
LIMITED

1735 Sydney Road, Campbellfield, Victoria



