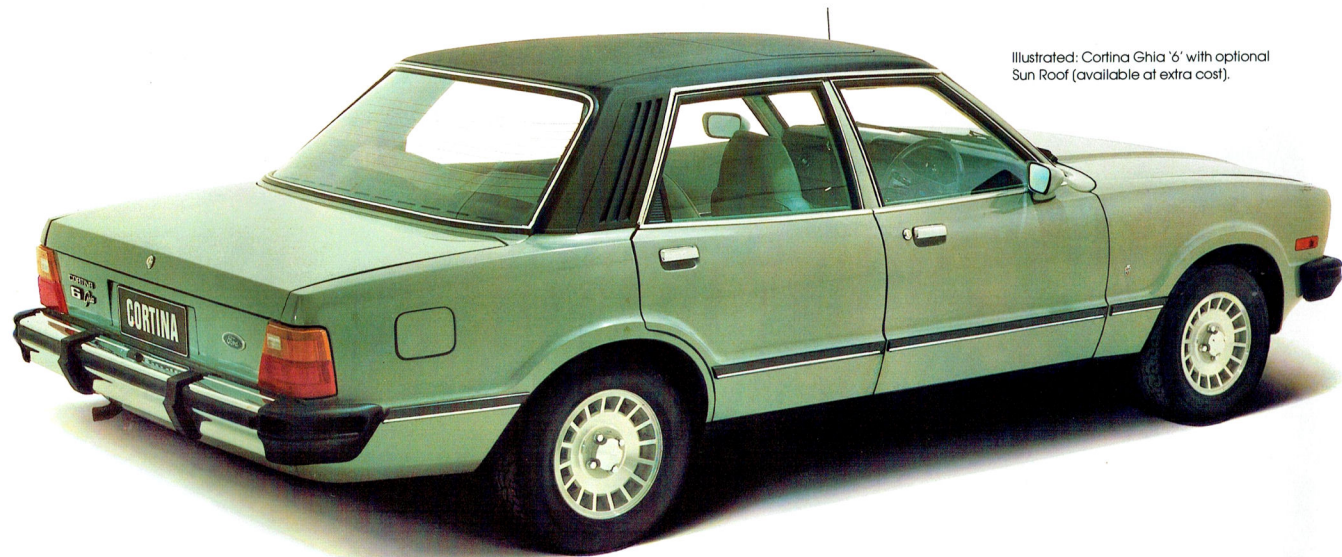


New Breed Cortina



Cortina Ghia



Illustrated: Cortina Ghia '6' with optional Sun Roof (available at extra cost).

New Breed Cortina. Drive it . . . it makes beautiful sense.

The relationship between a person and a car is a very special thing. For a car means many different things to many people . . . freedom . . . convenience . . . adventure . . . transportation . . . recreation, and the means to escape on holidays.

Probably few people understand the functions of a car better, and interpret that understanding so well in terms of efficiency, as do the European car manufacturers. And it was in Europe that the new Cortina began . . . its styling and package attributes were born on the drawing boards of the Cologne Design Centre of Ford of Germany.

Then \$16 million was invested in adapting the new Cortina concept for Australian

manufacture. Thousands of man-hours were spent on the new car's engineering. At Ford's test-track and proving grounds in Victoria, the car was put through endurance tests, crash-barrier tests and performance tests to ensure the car's suitability for Australian conditions.

The result?

The new-breed Cortina. Here are clean, clear lines, uncluttered by short-lived frills, designed to last without becoming outdated. Above all, here is a car designed with the driver in mind.

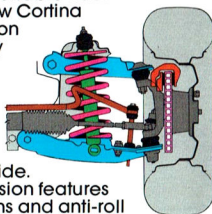
Ride and Handling

A great deal of attention has been given to

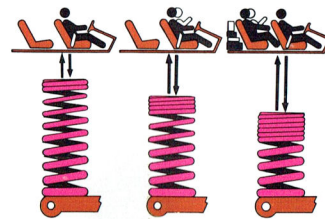
the handling characteristics of the new Cortina . . . the prime objective being to achieve good handling qualities whilst maintaining a comfortable ride. Just how well the new Cortina responds and feels on the road is not really appreciated until you're behind the wheel.

There are coil springs at all four wheels to provide a smooth, balanced ride.

The front suspension features long suspension arms and anti-roll



bar for good control while cornering. Anti-dive geometry is included in the design so that under hard braking conditions the normal tendency for the front of the car to 'dive' is reduced.



The rear suspension system features a four-bar-link system to locate the axle with an anti-roll bar to control body roll. To reduce variations in ride and handling under various load conditions, variable-rate coil springs are fitted.

The feel of the road is maintained by the provision of variable-ratio rack-and-pinion steering.

Manoeuvrability is enhanced by a tight turning circle of 10.4 metres (34 feet). It requires only 3.9 turns of the steering wheel lock-to-lock.

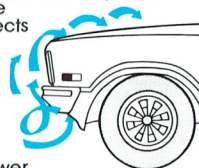
Good road-adhesion is achieved by the fitting of radial-ply tyres as standard, and by the exceptionally wide track for a car of Cortina's size.

Visibility will also be appreciated . . . slim roof pillars and very large window areas provide almost 310 degrees of all-round vision, and good news for parking . . . the extremities of bonnet and boot can be seen by the driver.

Another important feature to aid driver control is the design of the front spoiler.

Positioned below the front bumper, it deflects the air-flow at the front of the vehicle, thus increasing stability at higher speeds by pushing air around, rather than under, the car.

For stopping power, there's a dual circuit, power-assisted



braking system. It features ventilated discs up front, and wide drums at the rear, to help reduce the possibility of brake fade.

Comfort

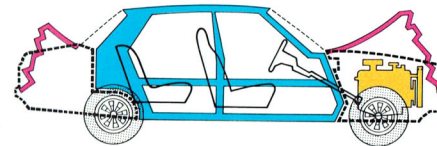
The new Cortina proves one thing: the days when luxury was reserved for the rich are gone. Every model of new Cortina has room that's strictly 'settle-back' comfort. Reclining bucket seats up front. Carpeting. A sound absorbing package that lets you ride in quiet pleasure. A fan-boosted, fresh-air ventilation system providing for continuous extraction of stale air through vents in the rear pillars. And more, as you'll discover in the following pages.

Driver and Passenger Protection

The Cortina design includes engineering features which contribute towards driver and passenger protection.

Cortina's predictable handling characteristics — provided by features such as rack-and-pinion steering, radial ply tyres and ventilated disc brakes — help avoid accidents. In addition, the following are examples of features which help reduce the severity of an accident, if it occurs, and they are standard on every new Cortina.

- Survival Zone — the passenger compartment of the car is surrounded by a steel 'Protective-Cage'.



- Front and rear body structure is computer-designed into crumple zones so they collapse progressively.
- Door beams are provided so that intrusion into the passenger compartment under side impact is reduced.
- The steering column is designed to collapse at a pre-determined load under impact conditions.
- 'Anti-burst' door locks are fitted to all doors.
- Child-proof safety locks are provided on

rear doors. They cannot be opened by prying fingers from the inside when set to the 'lock' position.

Power

Basically, there are two ways to go Cortina — 'Four' or 'Six'. When you choose Cortina 4, you choose a 2-litre overhead cam engine that's designed to give you the best of both worlds . . . good performance with good fuel economy.

When you choose a Cortina 6, you get the smooth, easy power of the 3.3-litre engine as standard, or, if you want real performance, you can order the optional 4.1-litre engine at extra cost.

Engine/transmission combinations are shown on page 15.

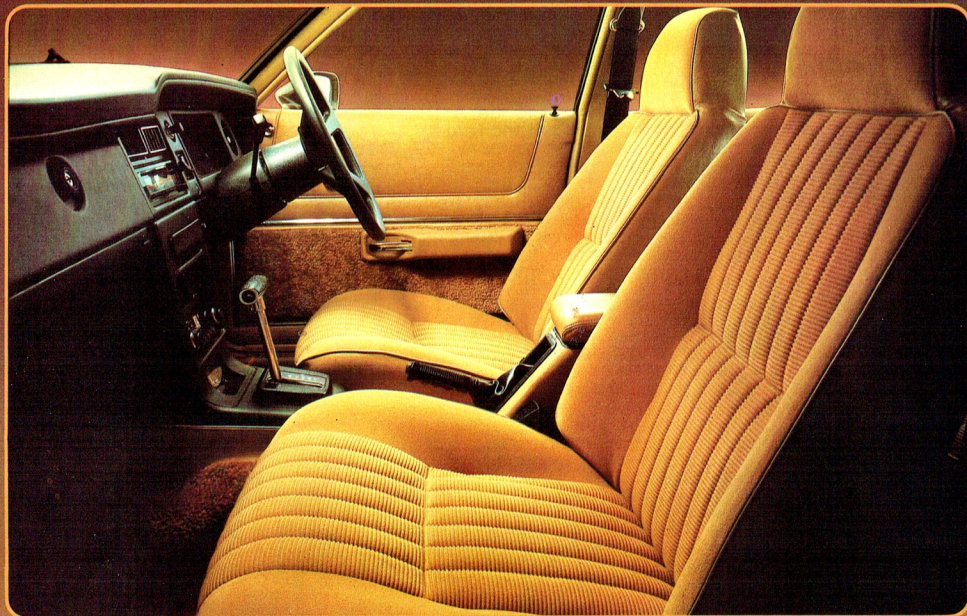
Model Range

The new-breed Cortina offers you a great model choice, 10 models in all. Three sedans for Cortina 4 — L, GL and Ghia, the same for Cortina 6 . . . and they're all with 4-door convenience; and L and GL wagons in both 4-cylinder and 6-cylinder versions. Which means there should be one that's just right for you.

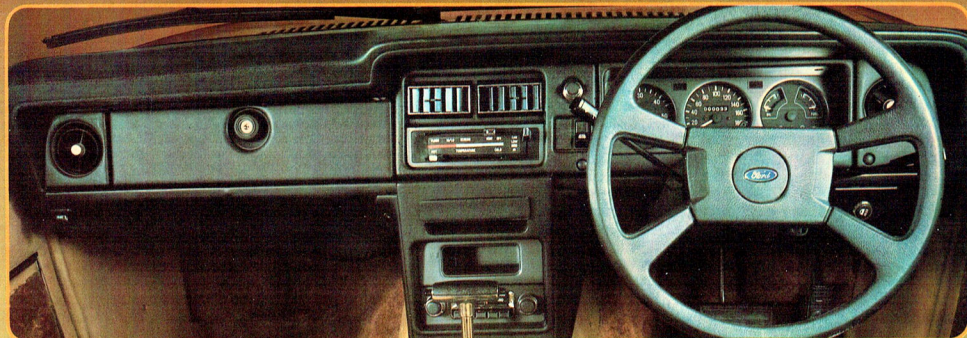
To further personalise your Cortina, there's a comprehensive choice of options, available at extra cost, shown on page 14.

PLEASE NOTE: The illustrations, information and specifications presented and referred to herein were correct at the time this publication was approved for printing. However, Ford Motor Company of Australia Limited and/or Ford Sales Company of Australia Limited reserve(s) the right, subject to the laws of Australia and/or any applicable State or Territory thereof and/or the regulations of any competent authority which may apply from time to time, at their or its discretion, and without notice, to discontinue or change the specification, or design of the products referred to herein and any options therefor at any time without incurring any liability whatsoever to any purchaser thereof. Some of the items illustrated or referred to herein are optional at extra cost. Some options may be required in combination with other options. Always consult your Ford Dealer for the latest information on models, specifications, features, prices, options and availability.

FORD SALES COMPANY OF AUSTRALIA LIMITED
1735 Sydney Road, Campbellfield, Victoria



Interior shown with optional T-Bar automatic (available at extra cost).



Cortina Ghia.

The Cortina Ghia is the top-of-the-line Cortina. Marked by distinctive exterior styling touches, such as vinyl roof and European full-alloy, wide-rim wheels, it also features a luxurious interior. Tastefully upholstered with rich corduroy and cashmere fabrics, the Ghia gives you deeply-cushioned, body-contoured seating; thick, cut-pile carpeting and extensive sound-insulation. The ride is smooth — and with the added grip of

steel-belt radial-ply tyres. Order it as a 'four' or a 'six' with your choice of console-mounted manual shift as standard, or optional at extra cost T-bar automatic.

Standard equipment highlights include:

- Corduroy and cashmere upholstery
- 4-spoke 'soft-feel' steering wheel
- Thick, cut-pile carpeting
- Vinyl roof
- Tinted-band, laminated windshield
- Tinted side and rear windows
- Heated

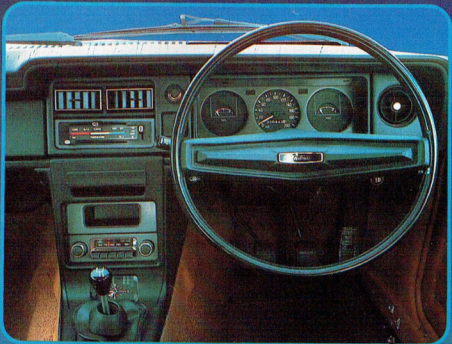
- rear window demister
- Push-button radio
- Electric clock
- Intermittent windshield wipers
- Tachometer, oil gauge and trip meter
- Outboard passenger grab handles
- Face-level, power-boosted ventilation
- Twin exterior rear-view mirrors
- Map pockets in rear of front seats
- Quartz halogen headlights
- Steel-belt radials
- Bumper rub strips and overrides
- Deep-section body-side protection mouldings.



Always discuss your intended purchase carefully with your Ford Dealer before placing your order.



Always discuss your intended purchase carefully with your Ford Dealer before placing your order.



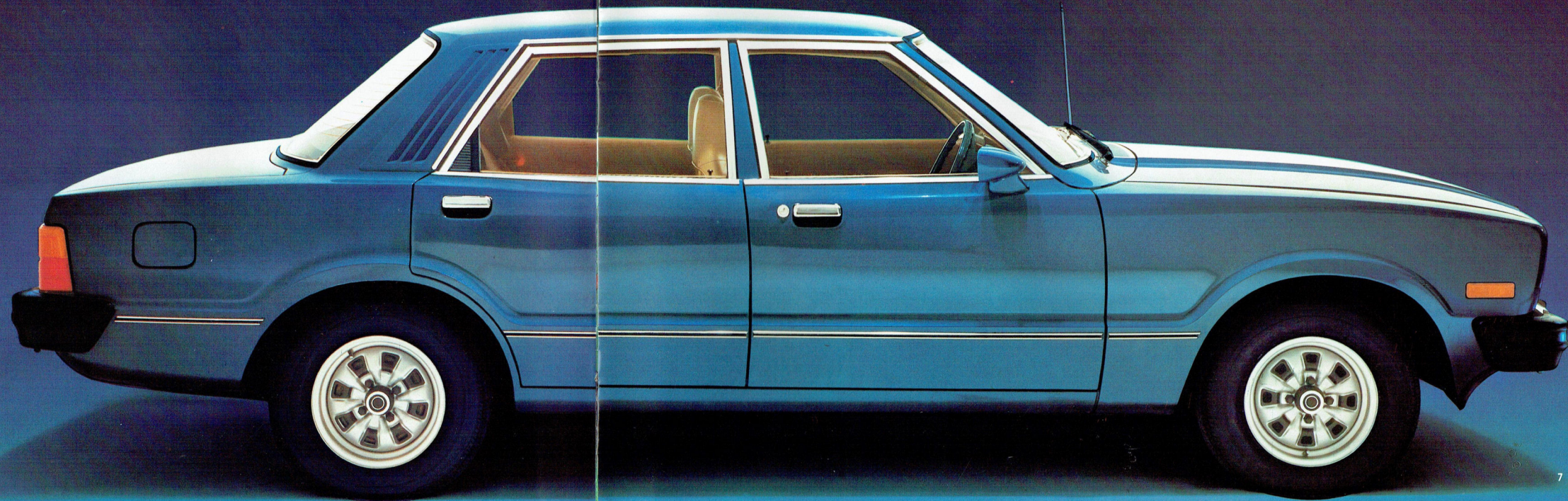
Cortina GL.

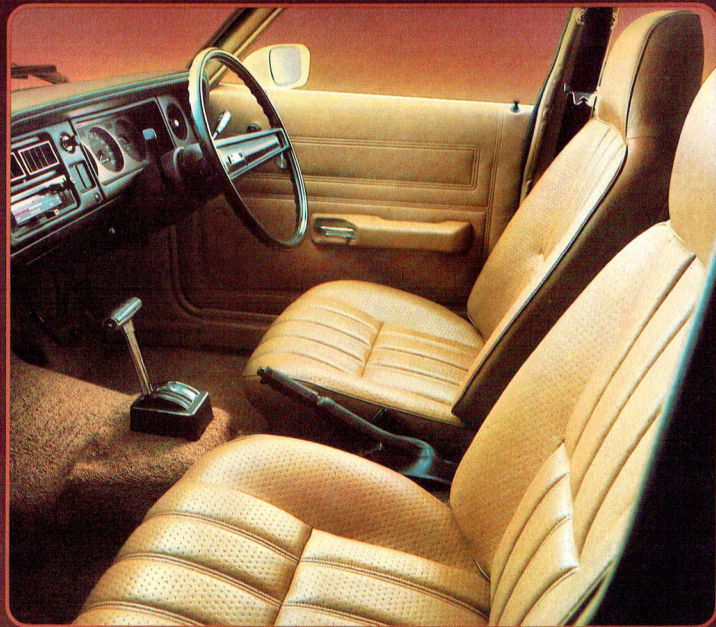
A car that's beautiful to look at and to drive is all very well, but there's more to motoring than looking good and feeling good behind the wheel. A very big consideration with the Cortina GL is its comprehensive feature level. It packs as much room, comfort, riding-quality and performance into its clean, uncluttered lines as some cars costing considerably more. Handles and tracks beautifully. And has a long list of standard equipment. Therefore, it lets you set your

standards high — without you having to pay a high price.

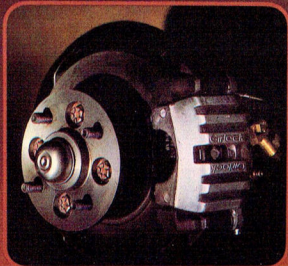
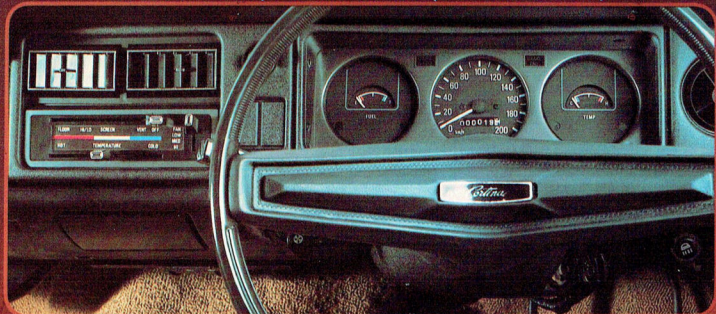
Standard equipment highlights include:
• Steel, sports-type wheels • Radial-ply tyres • Reclining front bucket seats • Perforated vinyl upholstery • Front centre console • Loop-pile carpeting • Heated rear window demister • Push-button radio • Electric clock • Outboard passenger grab handles front and rear • Face-level, power-boosted

ventilation • Rear seat folding centre armrest • Styled, right-hand-side exterior rear-view mirror • Quartz halogen headlights • Deep-section bumper bars with protective rubber end caps • Body side protection mouldings • Interior courtesy lights operated by front and rear doors • 3-speed heater/demister • Steering column control stalks for (i) — turn signal/lane change, high/low beam, headlight flasher and horn, (ii) — windshield wash/wipe.





Interior shown with optional T-Bar automatic (available at extra cost).



Cortina L.

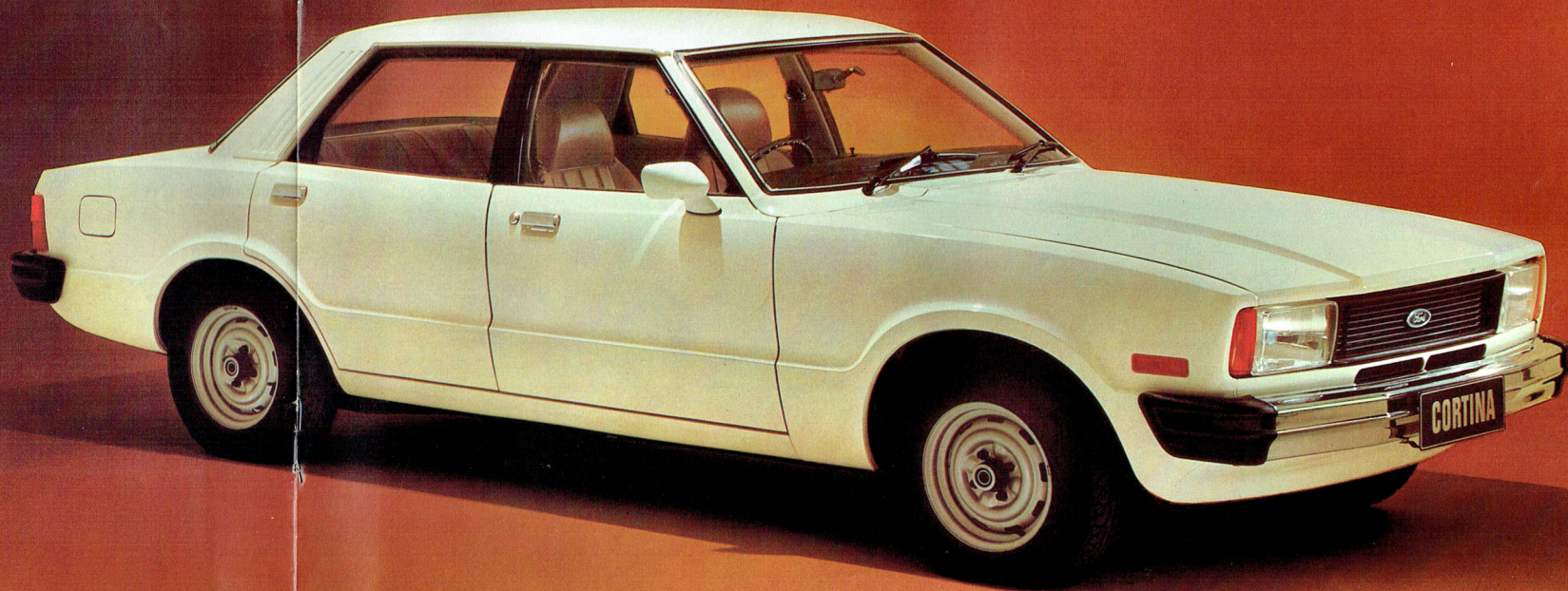
Everyone these days has a keen sense for value. And one sure way to bring it right out into the open is to get behind the wheel of a new Cortina L. Here is neatly tailored simplicity in a size for today's out-and-about living. Beautifully compact on the outside for tight responsive manoeuvring. Yet spacious and comfortably appointed inside, with a list of equipment that may be considered luxurious by some, but it simply makes beautiful sense. Particularly when you consider Cortina L's price-tag.

Standard equipment highlights include:

- Steel, slotted road wheels
- Radial-ply tyres
- Reclining front bucket seats
- Perforated vinyl upholstery
- Loop-pile carpeting
- Face-level, power-booster ventilation
- Styled, right-hand-side exterior rear-view mirror
- Quartz halogen headlights
- Deep-section bumper bars with protective rubber end caps
- Interior courtesy lights operated by front doors
- 3-speed heater/demister
- Lockable

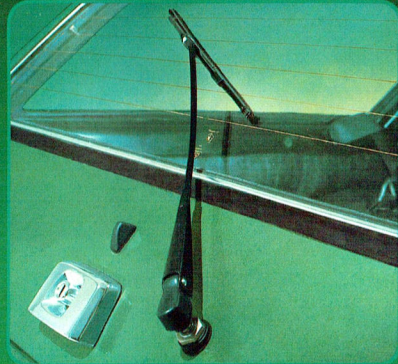
- glove box
- Cigar lighter (illuminated)
- Prismatic day/night rear-view mirror
- Black, non-glare windshield wipers
- Front fender side-marker lights
- Steering column control stalks for (i) — turn signal/lane change, high/low beam, headlight flasher and horn, (ii) — windshield wash/wipe.

Always discuss your intended purchase carefully with your Ford Dealer before placing your order.





Cortina GL interior with optional Multiplex Radio and Cassette Player (available at extra cost).



Cortina GL Wagon features a rear-window washer, wiper and demister.

Cortina Station Wagons.

Versatile, strong and spacious . . . that sums up the two new Cortina Wagons: L and GL. Use them as freedom machines . . . work-horses . . . shopping baskets . . . delivering the kids . . . whatever. Each offers you a lot of loadspace. A rear opening that's wide and deep. And a

tailgate that swings up in one easy action. Each offers you the same manoeuvrability of the sedans, too. The same tight turning circle. The same variable-ratio rack-and-pinion steering, power-assisted brakes and wide track for relaxation behind the wheel. And the great ride benefits of variable-rate rear springs. Combine those attributes with their list of standard appointments and you begin to get the idea they're in a class of their own. And you're right.

Standard equipment highlights include:
 Cortina L : Quartz halogen headlights
 • Deep-section bumper bars with protective rubber end caps • Front fender side-marker lights • Styled, right-hand-side exterior rear-view mirror
 • Reclining front bucket seats • Perforated vinyl upholstery • Face-level, power-assisted ventilation • Loop-pile carpeting — front and rear passenger compartments • 3-speed heater/demister • Prismatic day/night

rear view mirror • Steering column control stalks for (i) — turn signal/lane change, high/low beam, headlight flasher and horn, (ii) — windshield wash/wipe.

Cortina GL : As for Cortina L but with these additional features — body-side protection mouldings • Rear window wash/wipe • Rear window demister
 • Front centre console • Push-button radio
 • Electric clock • Carpet in load area
 • Styled, sports-type road wheels.

Cortina GL Wagon with optional Luxury Pack and steel-belt Radials (available at extra cost).



Always discuss your intended purchase carefully with your Ford Dealer before placing your order.

Cortina GS Rally Pack Option. (Available at extra cost on L and GL models.)

The GS Rally Pack is designed to allow you to drive your own Grand Sport touring car... to make your new Cortina into a sporty-looking, sports-handling machine.

All you do is pick your model... Cortina L or GL... 'six' or 'four'... sedan or wagon. Then add the GS Pack and exciting things happen.

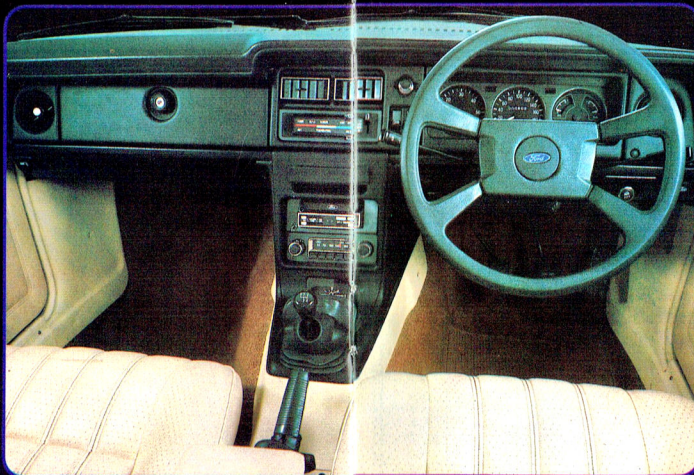
Along the side, bold body-side tape stripes. Black paint treatment at the front and rear, and around the windshield and rear window. Black-finish bumper bars with protective rubber overriders. Full

alloy Globe 'Volante' sports road wheels.

Up front there are twin, long-range halogen driving lights, also black-finish to merge in with the grille.

Inside, there's the European 4-spoke 'soft feel' steering wheel (shown right) and comprehensive instrumentation, including tachometer, trip meter and oil gauge.

At your finger tips, there's the control stalk for intermittent windshield wipers and washer. And, in sedans, a heavy-duty sports-handling suspension with



increased diameter anti-roll bars and performance-tuned shock absorber valving.

Even the range of colours available with the GS Pack is designed to make you feel a little special. They're limited to the bolder, more vibrant colours so that your 'Cortina GS' will be a reflection of the way you are.

Cortina Options.

It doesn't matter whether you want your Cortina to be a luxurious car... a sporty car... a family fun car... or a

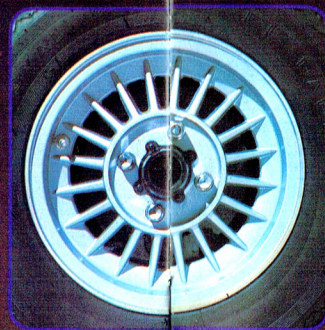
blend of all three, you can tailor it with your choice from the comprehensive range of Cortina options.

The more important and desirable options are...

POWER STEERING reduces steering effort, for ease-of-parking. **Variable-ratio steering geometry** gives good response and requires only 3.2 turns lock-to-lock. (Available with 6-cylinder models only.)

CLASS 1 TOWING PACK with a capacity of up to 2000 lbs. Pack consists of tow bar, gooseneck, wiring, flasher unit and, on sedans only, heavy-duty suspension.

The features illustrated on this spread, unless otherwise stated, are only available on L and GL models with the optional GS Rally Pack (available at extra cost). Always discuss your intended purchase carefully with your Ford Dealer before placing your order.



Illustrated left: Cortina GL '4' interior with optional GS Rally Pack and Cassette Player. Vehicles illustrated below have optional steel-bell Radials. These options are available at extra cost.



Illustrated left: Cortina Ghia with optional Sun Roof and Long Range Driving Lights (available at extra cost).

Cortina Options (continued).

AM/FM RADIO provides two-channel FM stereophonic sound with two front speakers.

CASSETTE PLAYER features slide controls for balance, tone and volume, and stereophonic reproduction (available on Ghia and GL models only).

Two special Option Packs are available. They are:

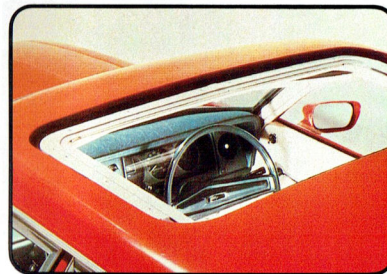
COMFORT/CONVENIENCE PACK available with the GL Sedan. Consists of driver's side remote-control exterior rear-view mirror, passenger's side exterior rear-view mirror, rear-seat inertia-reel seat belts and 'Houndstooth' cloth trim seat-facings.

LUXURY PACK available with GL Sedan and Wagon. For the sedan it consists of all 'Comfort/Convenience Pack' items above, plus: Cassette player, long-range driving lights, front and rear bumper overrides and sun roof. For the GL wagon, it consists of driver's side remote-control rear-view mirror, passenger side rear-view mirror, cassette player, driving lights, front and rear bumper overrides and chrome roof rack.

Always discuss your intended purchase carefully with your Ford Dealer before placing your order.

CORTINA OPTION RANGE					
ITEM	CORTINA L		CORTINA GL		GHIA
	Sedan	Wagon	Sedan	Wagon	
GS Rally Pack	O	O	O	O	NA
Comfort/Convenience Pack	NA	NA	O	NA	NA
Luxury Pack	NA	NA	O	O	NA
Towing Pack	O	O	O	O	O
Power Steering (a)	O	O	O	O	O
Tinted Band, Laminated Windshield	O	O	O	O	STD
LHS Exterior Rear-View Mirror	O	O	O	O	STD
Bumper Rub-strips and Overrides	O	O	O	O	STD
Push-Button Radio — AM	O	O	STD	STD	STD
AM/FM Multiplex Radio	O	O	O	O	O
Cassette Player	NA	NA	O	O	O
Body-Side Protection Mouldings	O	O	STD	STD	NA
Vinyl Roof	O	NA	O	NA	STD
Sliding Steel Sunroof	O	NA	O	NA	O
Two-Tone (White) Roof	O	NA	O	NA	NA
Long-Range Driving Lights (b)	O	O	O	O	O
Child Seat	O	O	O	O	O
Child Harness	O	O	O	O	O

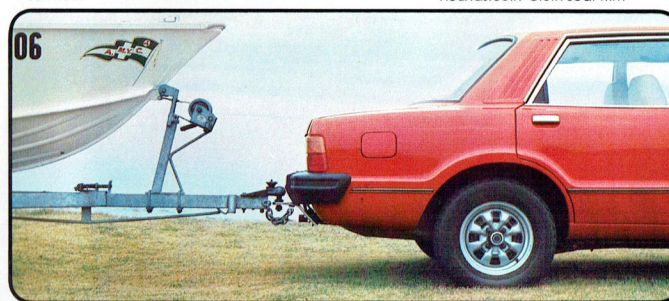
Code: STD = Standard Equipment. O = Optional at extra cost. NA = Not Available.
 Note: (a) Power steering is available only with 6-cylinder models. (b) Front and rear Bumper Overrides are mandatory when you order Long-Range Driving Lights.



Sun Roof



'Houndstooth' Cloth Seat Trim



Class 1 Towing Pack



T-Bar Automatic



Cassette Player



AM/FM Multiplex Radio

All options shown left are available at extra cost. Please note that the 'Houndstooth' Cloth Seat Trim is obtainable only on GL Sedans when you order the Comfort/Convenience Pack or the Luxury Pack.

ENGINE/TRANSMISSION COMBINATIONS						
FOUR-CYLINDER MODELS		CORTINA L		CORTINA GL		GHIA
		Sedan	Wagon	Sedan	Wagon	
2-litre	4-speed manual, floorshift	STD	STD	STD	STD	STD
	'4' with: 3-speed T-Bar, automatic	O	O	O	O	O
SIX-CYLINDER MODELS		CORTINA L		CORTINA GL		GHIA
		Sedan	Wagon	Sedan	Wagon	
3.3 litre	3-speed manual, floorshift	STD	STD	STD	STD	NA
	'6' with: 3-speed T-Bar, automatic	O	O	O	O	NA
4.1 litre	4-speed manual, floorshift	O	O	O	O	STD
	'6' with: 3-speed T-Bar, automatic	O	O	O	O	O

WHEELS AND TYRES AVAILABILITY		CORTINA L		CORTINA GL		GHIA
		Sedan	Wagon	Sedan	Wagon	
Argent Steel Slotted Road Wheels		STD	STD	NA	NA	NA
Steel Sports-Type Road Wheels		NA	NA	STD	STD	NA
European Full-Alloy Road Wheels		NA	NA	NA	NA	STD
Volante Sport Alloy Road Wheels (available only as part of GS Rally Pack)		O	O	O	O	NA
175 SR	13 Radial Ply Tyres (a)	STD	STD	STD	STD	NA
BR 78 S	13 Steel Radial Ply Tyres	O	O	O	O	STD
BR 78 H	13 Steel Radial Ply Tyres	O	O	O	O	O

(a) 175 SR 13 Radials will be fitted as standard to early production models only. When sufficient supplies of BR 78 S steel-belt Radials are available, these will be fitted as standard. Check your Ford Dealer for specification/price details.

Dimensions:	Sedans	Wagons	
Overall length			
– without overriders	4382 mm (172.5')	4493 mm (176.9')	
– with overriders	4433 mm (174.5')	4544 mm (178.9')	
Overall width	1699 mm (66.9')	1699 mm (66.9')	
Overall height	1337 mm (52.6')	1342 mm (52.8')	
Wheelbase	2578 mm (101.5')	2578 mm (101.5')	
Track – front	1422 mm (56.0')	1422 mm (56.0')	
– rear	1422 mm (56.0')	1422 mm (56.0')	
Fuel tank capacity	55 litres (12.1 gals)	55 litres (12.1 gals)	
Turning circle (wheel centreline)	10.4 m (34 ft.)	10.4 m (34 ft.)	
Luggage capacity (maximum)	0.33 m ³ (11.8 cu. ft.)	–	
Wagon load capacity			
– to rear seat	–	0.96 m ³ (34 cu. ft.)	
– to front seat			
(with rear seat folded down)	–	1.81 m ³ (64 cu. ft.)	
Engine Specifications:	2.0 litre 4-cylinder	3.3 litre 6-cylinder	4.1 litre 6-cylinder
Engine displacement	1998	3280	4100
Bore (mm)	90.8	93.5	93.5
Stroke (mm)	76.9	79.1	99.3
Compression ratio (to 1)	8.2	7.9	9.0

PLEASE NOTE:

The illustrations, information and specifications presented and referred to herein were correct at the time this publication was approved for printing. However, Ford Motor Company of Australia Limited and/or Ford Sales Company of Australia Limited reserve(s) the right, subject to the laws of Australia and/or any applicable State or Territory thereof and/or the regulations of any competent authority which may apply from time to time, at their or its discretion, and without notice, to discontinue or change the specification or design of the products referred to herein and any options therefor at any time without incurring any liability whatsoever to any purchaser thereof.

Some of the items illustrated or referred to herein are optional at extra cost. Some options may be required in combination with other options.

Always consult your Ford Dealer for the latest information on models, specifications, features, prices, options and availability.

FORD SALES COMPANY OF AUSTRALIA LIMITED
 FORD MOTOR COMPANY OF AUSTRALIA LIMITED
 1735 Sydney Road, Campbellfield, Victoria

FORD CORTINA

