

Ford Sales Company of Australia Limited



Ford Cars

All Model Catalogue May 1978



Ford Falcon. It never felt better!

This comprehensive catalogue is designed to introduce you to the wide range of Ford cars available in Australia. It contains

- illustrations
- brief descriptions
- lists of selected standard equipment
- various technical specifications
- a selection of the extra cost options which are available for each of the models referred to.

One thing will become obvious to you as you study these pages—there is a Ford model to satisfy almost every type of car buyer.

If you require a small car, there is the range of European Formula Ford Escorts; in the medium-car field, the Cortina range of sedans and wagons; for larger car buyers, the popular range of Ford Falcons and Fairmonts. If your taste runs to larger, more prestigious motoring, you can select from the Fairlane 500, Fairlane Marquis or Ford LTD models.

Ford has a way of motoring for just about everyone—so if you make "Going Ford the Going Thing"...you should find a Ford car to suit your needs.

As changes may be made from time to time to the range of products, and their specifications, standard equipment levels and options available, always consult your Ford Dealer for the latest information before placing your order.

Make your move with Ford Escort

Ford's European Formula Small Car.



Illustrated above: Ford Escort 2 litre 2 door sedan with optional GS Rally Pack (available at extra cost).

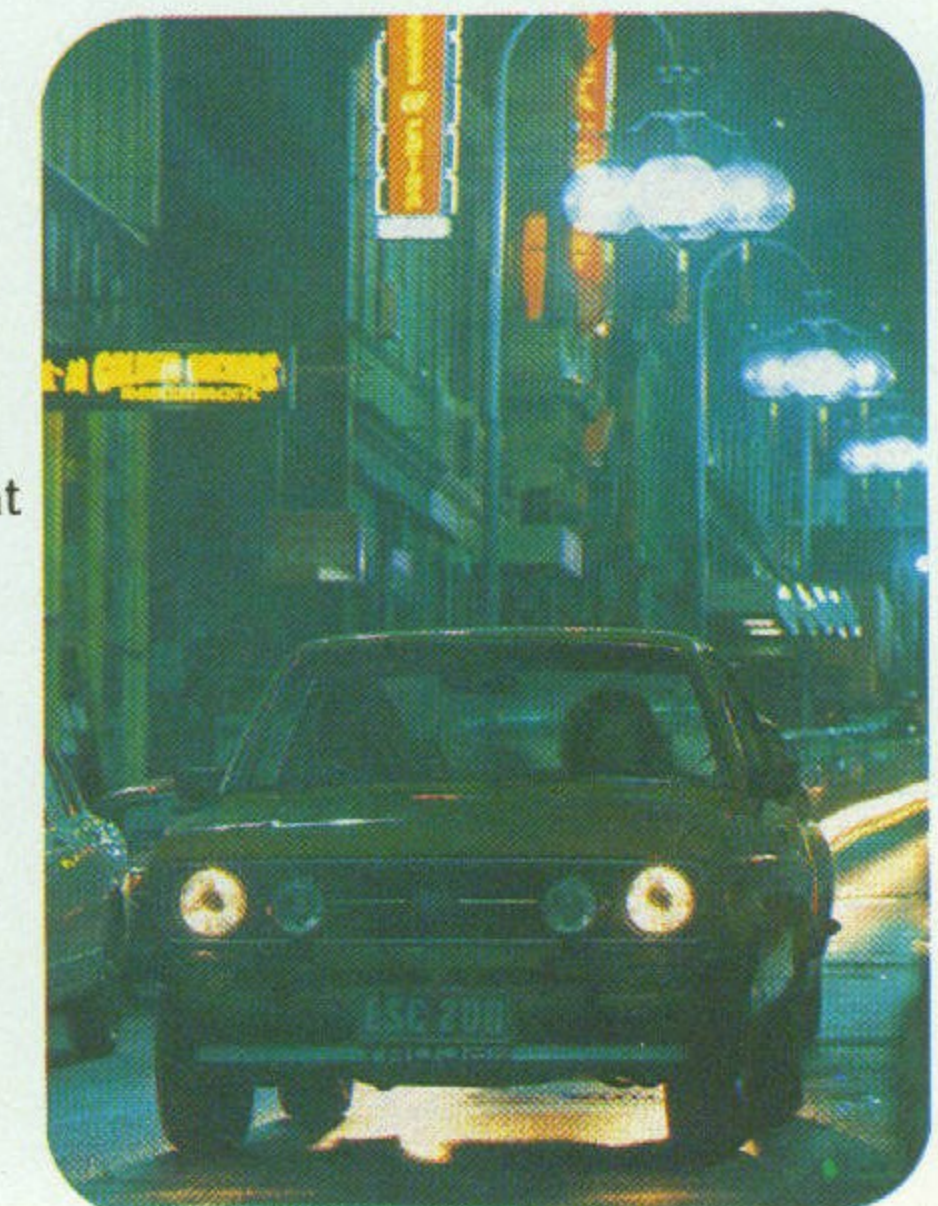
FORD ESCORT 2 LITRE with GS Rally Pack ...it moves!

Escort 2 litre GS for the sporty, bold and young-spirited. It's a package with the kind of performance and an equipment level that takes 'small car' motoring up into the big league.

To make it all happen simply pick your model... 2 litre GL sedan in either 2 or 4 door form, then order the extra cost GS Rally Pack*. You get the added go of a 94 hp (70 kW) overhead cam engine that puts out 109 lbs. ft. (148 Nm) of torque. And you get lots of sports-type equipment like front and rear spoilers, styled steel road wheels and steel belt radials. Also bold, bodyside tape stripes, sports steering wheel, comprehensive instrumentation including tachometer, long-range driving lights, and more.

Standard transmission is an all-synchromanual floor shift, or you can order the optional at extra cost 3-speed T-bar automatic. Both are housed in a sporty console.

*For details of the GS Rally Pack refer to Page 10.



Illustrated above and far right: Ford Escort 2-litre Sedan with optional GS Rally Pack and "Volante" sports alloy road wheels (available at extra cost).
Illustrated front cover: Ford Fairmont GXL with optional 4.9 litre V8 engine (available at extra cost).

Illustrated below: Ford Escort 1.6 litre GL Van and Ford Escort 1.6 litre L Sedan.



ESCORT L & GL VANS

FORD ESCORT L VAN STANDARD EQUIPMENT HIGHLIGHTS

- ★ 1.6 litre crossflow 4-cylinder engine
- ★ 4-speed manual floor shift transmission
- ★ Power assisted front disc brakes
- ★ Y78L 13 crossply tyres
- ★ Front bucket seats with perforated grained vinyl upholstery
- ★ Outboard inertia reel front seat belts
- ★ Prismatic day/night interior rear-view mirror
- ★ Ventilation system with individual directional ball vents and under-dash vents
- ★ 2-speed heater/demister with illuminated slide controls
- ★ 2-speed windscreen wipers and 2-jet washers
- ★ Steering column control stalks for
 - Turn/lane change signals, high/low beam, headlight flasher, horn button and
 - 'Flick-wipe' windscreen wiper/washer
- ★ Styled right and left hand exterior rear-view mirrors
- ★ Interior courtesy light operated by front doors
- ★ Front passenger side parcel shelf
- ★ Driver's side trinket tray
- ★ Hazard flashers

FORD ESCORT GL VAN STANDARD EQUIPMENT HIGHLIGHTS

As for Escort L Van but with these additional features which are not standard on Escort L Van:

- ★ Quartz halogen headlights
- ★ AM push-button radio
- ★ Centre console
- ★ Cigarette lighter (illuminated)
- ★ Bumper rub strips
- ★ 155SR 13 radial ply tyres
- ★ Loop-pile carpeting in passenger compartment
- ★ Rear load area rubber mat
- ★ Van side glass

ESCORT 1.6 L SEDAN

If your taste is for a 2 door, here is European style, flair and features to make driving a real pleasure.

Escort L is powered by an economical 1.6 litre crossflow engine that's equally at home around town or on the open highway. This power is matched to a 4-speed floor shift transmission that's great to handle.

Your comfort is taken care of with reclining front bucket seats, carpet and directional ventilation.

FORD ESCORT L STANDARD EQUIPMENT HIGHLIGHTS

- ★ 1.6 litre crossflow 4-cylinder engine
- ★ 4-speed manual floor shift transmission
- ★ Power assisted front disc brakes
- ★ 155SR 13 radial ply tyres
- ★ Reclining front bucket seats with perforated grained vinyl upholstery
- ★ Outboard inertia reel front seat belts
- ★ Prismatic day/night interior rear-view mirror
- ★ Ventilation system with individual directional ball vents and under-dash vents
- ★ 2-speed heater/demister with illuminated slide controls
- ★ 2-speed windscreen wipers and 2-jet washers
- ★ Steering column control stalks for
 - Turn/lane change signals, high/low beam, headlight flasher, horn button and
 - 'Flick-wipe' windscreen wiper/washer
- ★ Loop pile carpet
- ★ Bodyside protection mouldings
- ★ Styled right hand exterior rear-view mirror
- ★ Interior courtesy light operated by front doors
- ★ Front passenger side parcel shelf
- ★ Driver's side trinket tray
- ★ Tinted rear window
- ★ Hazard flashers



Illustrated above: Ford Escort GL Van interior.



FORD ESCORT 1.6 LITRE GL 2 LITRE GL

Well appointed with European flair

Available in 2 door or 4 door form, there's even more to get excited about in Ford Escort GL. You've a choice of 1.6 litre and 2 litre models. In addition to reclining front bucket seats and carpet, there's a handy centre console with an AM push-button radio. Flick on the headlights and you'll make another discovery too—GL has quartz halogen headlights for brighter night driving. Among other items are bumper rub strips for added protection.

Whichever model you choose, it comes with a sporty 4-speed manual floor shift, or you can opt for the 3-speed T-bar automatic (available at extra cost). And you feel in control with GL's responsive rack-and-pinion steering, radial ply tyres and power assisted front disc brakes.

If you appreciate plenty of features with European style and flair then Ford Escort GL is your car.

FORD ESCORT GL STANDARD EQUIPMENT HIGHLIGHTS

As for Escort L but with the upgraded feature of:

- ★ Quartz halogen headlights and with these additional features which are not standard on Escort L:
- ★ AM push-button radio
- ★ Electric rear window demister
- ★ Centre console
- ★ Bumper rub strips
- ★ Outboard passenger grab handles
- ★ Styled wheelcovers
- ★ Cigarette lighter



Illustrated right: Ford Escort GL interior with optional T-bar automatic transmission (available at extra cost).



Illustrated above and below: Ford Escort Ghia interior with optional air conditioning and 3-speed T-bar automatic transmission (available at extra cost).

FORD ESCORT 2 LITRE GHIA

Just about everything you can think of in a small car has been thought of.

In terms of luxury and standard appointments, Escort Ghia ranks highly against many other small cars costing considerably more.

It's a standard of luxury born and bred in Europe... the home of highly appointed and high performing small cars.

With seating, upholstered in imported cloth; timber veneer dash; tinted side and rear windows; interior quietness and exhilarating performance from its 2 litre overhead cam engine, Escort Ghia is a car that has to be sat in and driven to be fully appreciated.

For now, this extensive standard equipment list will at least give you some appreciation of how a small car can be so luxurious.

FORD ESCORT GHIA STANDARD EQUIPMENT HIGHLIGHTS

As for Escort 2 litre GL but with these upgraded features:

- ★ ZR78S 13 steel belt radial ply tyres
- ★ Carpeted kick pads on doors
- ★ Imported Verona and Cashmere cloth seat upholstery
- ★ Styled remote control right hand rear-view mirror
- ★ Front passenger side glove box
- ★ Two spoke 'soft-feel' steering wheel
- ★ Dual tone horn
- ★ Tinted-band, laminated windscreen
- ★ Rectangular quartz halogen headlights
- ★ Styled steel road wheels with chrome trim rings and with these additional features which are not standard equipment on Escort GL:
- ★ Tinted side windows
- ★ Electric clock
- ★ Timber veneer fascia panel on dash
- ★ Tachometer and trip meter

- ★ Vanity mirror in passenger sun visor
- ★ Vinyl roof
- ★ Front and rear bumper overriders
- ★ Styled left hand exterior rear-view mirror
- ★ Carpeted floor in luggage compartment
- ★ Intermittent windscreen wipers



Ford Escort L and GL Sedans and Vans, and Ghia Sedan Options and Specifications (Options are at extra cost)

CONVENIENCE EQUIPMENT	Escort L Sedan	Escort L Van	Escort GL Sedan	Escort GL Van	Escort Sundowner Van	Escort Ghia
Integrated air conditioning(a)	NA	NA	OPT	OPT	OPT	OPT
AM push-button radio	OPT	OPT	STD	STD	STD	STD
AM/FM Multiplex push-button radio	OPT	NA	OPT	NA	NA	OPT
Styled left hand exterior rear-view mirror	OPT	STD	OPT	STD	STD	STD
Styled right hand remote control exterior rear-view mirror	OPT	OPT	OPT	OPT	OPT	STD
Bumper overrides(b)	OPT	NA	OPT	NA	NA	STD
Towing Pack(c)	OPT	OPT	OPT	OPT	OPT	OPT

SPORTS EQUIPMENT	Escort L Sedan	Escort L Van	Escort GL Sedan	Escort GL Van	Escort Sundowner Van	Escort Ghia
GS Rally Pack(d)	OPT	NA	OPT	NA	NA	NA
Tinted-band, laminated windscreen	OPT	OPT	OPT	OPT	OPT	STD
Long-range driving lights(e)	OPT	OPT	OPT	OPT	STD	OPT
Sports handling suspension(f)	NA	NA	OPT	NA	NA	OPT
"Volante" sports alloy road wheels(g)	OPT	OPT	OPT	OPT	OPT	OPT
Black front spoiler	OPT	NA	OPT	NA	NA	NA

APPEARANCE EQUIPMENT	Escort L Sedan	Escort L Van	Escort GL Sedan	Escort GL Van	Escort Sundowner Van	Escort Ghia
Vinyl roof	OPT	NA	OPT	NA	NA	STD
Metallic paint(h)	OPT	OPT	OPT	OPT	OPT	NCO
Vansideglass	NA	OPT	NA	STD	NA	NA
Delete van sideglass	NA	NA	NA	O/R	NA	NA

ENGINE AND TRANSMISSION COMBINATIONS	Escort L Sedan	Escort L Van	Escort GL Sedan	Escort GL Van	Escort Sundowner Van	Escort Ghia
1.6 litre crossflow 4-cylinder with:						
4-speed manual floorshift	STD	STD	STD	STD	STD	NA
3-speed T-bar automatic	OPT	OPT	OPT	OPT	OPT	NA
2 litre crossflow 4-cylinder with:						
4-speed manual floorshift	NA	NA	OPT	OPT	OPT	STD
3-speed T-bar automatic	NA	NA	OPT	OPT	OPT	OPT

TYRE AVAILABILITY	Escort L Sedan	Escort L Van	Escort GL Sedan	Escort GL Van	Escort Sundowner Van	Escort Ghia
Y78L 13 crossply tyres	NA	STD	NA	NA	NA	NA
155SR 13 radial ply tyres	STD	OPT	STD	STD	NA	NA
ZR 78S 13 steel belt radial ply tyres(i)	OPT	OPT	OPT	OPT	NA	STD
ZR 70S 13 steel belt radial ply tyres	OPT	OPT	OPT	OPT	STD	OPT

DIMENSIONS	Sedans		Vans	
	Escort L Sedan	Escort GL Sedan	Escort L Van	Escort GL Van
Overall length—with overrides	4059 mm (159.8")	4059 mm (159.8")	3978 mm (156.6")	3978 mm (156.6")
—without overrides	3978 mm (156.6")	3978 mm (156.6")	3978 mm (156.6")	3978 mm (156.6")
Overall width	1596 mm (62.8")	1565 mm (61.6")	1565 mm (61.6")	1565 mm (61.6")
Overall height	1373 mm (54.1")	1373 mm (54.1")	1545 mm (60.8")	1545 mm (60.8")
Wheelbase	2405 mm (94.7")	2405 mm (94.7")	2405 mm (94.7")	2405 mm (94.7")
Track—front	1270 mm (50.0")	1270 mm (50.0")	1270 mm (50.0")	1270 mm (50.0")
—rear	1296 mm (51.0")	1296 mm (51.0")	1296 mm (51.0")	1296 mm (51.0")
Fuel tank capacity	54.6 ltrs (12 gals)	54.6 ltrs (12 gals)	54.6 ltrs (12 gals)	54.6 ltrs (12 gals)
Luggage capacity—maximum	0.34 m ³ (11.9 ft ³)	0.34 m ³ (11.9 ft ³)	NA	NA
Turning circle—curb	8.9 m (29.2 ft)	8.9 m (29.2 ft)	8.9 m (29.2 ft)	8.9 m (29.2 ft)

ENGINE SPECIFICATIONS	1.6 litre Manual/Auto	2 litre Manual	2 litre Auto
Engine displacement(cc)	1598	1998	1998
Bore(mm)	81.0	90.8	90.8
Stroke(mm)	77.6	76.9	76.9
Compression ratio(to 1)	8.0:1	9.2:1	8.2:1
Max power(DIN)	46 kw (61 hp) at 5000 rpm	70 kw (94 hp) at 5200 rpm	64 kw (85 hp) at 5300 rpm
Max torque(DIN)	110 Nm (81 lb ft) at 2500 rpm	148 Nm (109 lb ft) at 3800 rpm	140 Nm (103 lb ft) at 3500 rpm



Footnotes to charts on left:

- (a) Air conditioning is available only with the 2 litre engine and includes tinted side and rear glass as standard. (Tinted side and rear glass not available on vans.)
- (b) Bumper overrides are standard with GS Rally Pack. Front bumper overrides are standard with the long-range driving lights option.
- (c) Towing Pack includes tow bar, gooseneck, wiring and uprated flasher unit. Towing capacity of up to 545 kg (1200 lbs).
- (d) GS Rally Pack comprises: Black-finish driving lights, front and rear bumper overrides, black quarter front bumpers, black rear bumper, black bodyside tape stripes, sports steering wheel, tachometer, black paint treatment, black-finish right hand and left hand exterior mirrors, black front spoiler, black rear decklid spoiler, intermittent windscreen wipers, styled steel wheels and restricted exterior paint range. Bodyside protection mouldings are not available when GS Rally Pack is specified.
- (e) Long-range driving lights are standard with GS Rally Pack. Front bumper overrides are also standard with this option.
- (f) Sports handling suspension is available only with 2 litre sedans and comprises: Stiffer spring and shock absorber settings, increased diameter front anti-roll bar and a rear anti-roll bar.
- (g) Steel belt radials must be specified with "Volante" sports alloy road wheels.
- (h) Consult the Ford Colour Selector or your Ford Dealer to determine which colours are metallic.
- (i) ZR 78S 13 steel belt radials are fitted as standard to 2 litre models and are optional at extra cost on 1.6 litre models.

Codes to charts on left:

STD means standard equipment.
OPT means optional at extra cost.
NA means not available on this model.
NCO means no cost option.
O/R means optional at reduced cost.

Always discuss your intended purchase carefully with your Ford Dealer before placing your order.

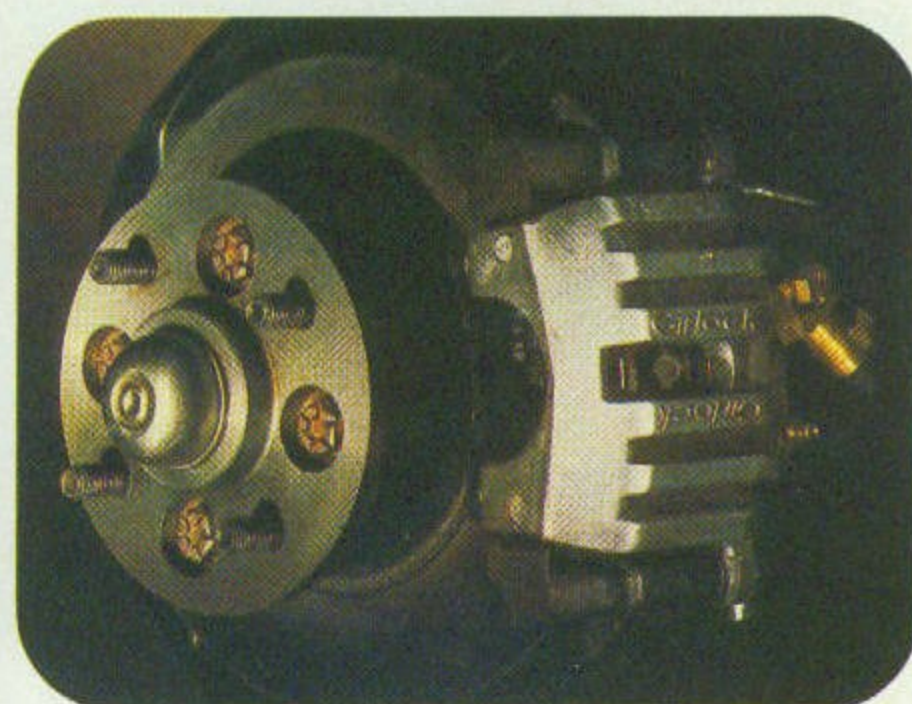
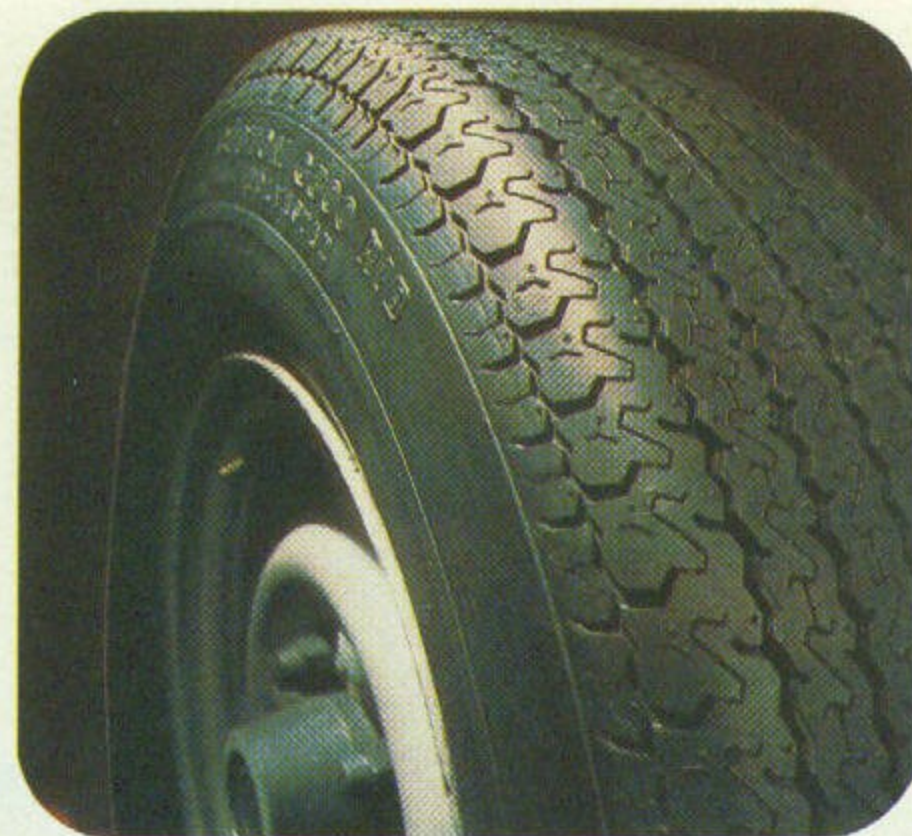
Ford Cortina. Drive it...it makes beautiful sense.



Illustrated above: Ford Cortina Ghia Sedan.



Interior shown with optional 3-speed T-bar automatic transmission (available at extra cost)



FORD CORTINA L

Everyone these days has a keen sense for value. And one sure way to bring it right out into the open is to get behind the wheel of a Cortina L. Here is neatly tailored simplicity in a size for today's out-and-about living. Beautifully compact on the outside for tight responsive manoeuvring. Yet spacious and comfortably appointed inside, with a list of equipment that may be considered luxurious by some, but it simply makes beautiful sense. Particularly when you consider Cortina L's price-tag.

FORD CORTINA L STANDARD EQUIPMENT HIGHLIGHTS

- ★ Steel, slotted road wheels
- ★ BR78S 13 steel belt radial ply tyres
- ★ Reclining front bucket seats with perforated vinyl upholstery
- ★ Inertia reel front seat belts
- ★ Loop pile carpet
- ★ Directional, power-booster ventilation
- ★ Styled right hand exterior rear-view mirror
- ★ Quartz halogen headlights
- ★ Deep-section bumper bars with protective rubber end caps
- ★ Interior courtesy lights operated by front doors
- ★ 3-speed heater/demister
- ★ Lockable glove box
- ★ Cigarette lighter (illuminated)
- ★ Prismatic day/night interior rear-view mirror
- ★ Black, non-glare windscreen wipers
- ★ Front fender side-marker lights
- ★ Steering column control stalks for
 - (i) Turn/lane change signals, high/low beam, headlight flasher and horn button
 - (ii) Windscreen wash/wipe



FORD CORTINA GL

A car that's beautiful to look at and to drive is all very well, but there's more to motoring than looking good and feeling good behind the wheel.

A very big consideration with the Cortina GL is its comprehensive feature level.

It packs as much room, comfort, riding-quality and performance into its clean, uncluttered lines as some cars costing considerably more. Handles and tracks beautifully. And has a long list of standard equipment.

Therefore, it lets you set your standards high—without you having to pay a high price.



FORD CORTINA GL STANDARD EQUIPMENT HIGHLIGHTS

As for Cortina L but with these upgraded features:

- ★ Steel sports-type wheels
 - ★ Interior courtesy light operated by front and rear doors
- and with these additional features which are not standard equipment on Cortina L:
- ★ Front centre console
 - ★ Electric rear window demister
 - ★ AM push-button radio
 - ★ Electric clock
 - ★ Outboard passenger grab handles
 - ★ Rear seat folding centre armrest
 - ★ Bodyside protection mouldings



FORD CORTINA L and GL WAGONS

Versatile, strong and spacious... that sums up the Cortina Wagons. Whichever model you choose, L or GL, use it as a freedom machine, a work-horse, a shopping basket, for delivering the kids or whatever. It offers you a lot of loadspace. A rear opening that's wide and deep, and a tailgate that swings up in one easy action.

It offers you the same manoeuvrability of the Cortina sedans, too. The same tight turning circle. The same variable-ratio rack-and-pinion steering, power assisted front disc brakes, wide track and the great ride benefits of variable-rate rear springs. Combine those attributes with its list of standard appointments and you begin to get the idea it's in a class of its own. And you're right.

FORD CORTINA L WAGON STANDARD EQUIPMENT HIGHLIGHTS

- ★ Steel, slotted road wheels
- ★ Power assisted front disc brakes
- ★ BR78S 13 steel belt radial ply tyres
- ★ Reclining front bucket seats with perforated vinyl upholstery
- ★ Loop pile carpet - front and rear passenger compartments
- ★ Directional, power-booster ventilation
- ★ Styled right hand exterior rear-view mirror

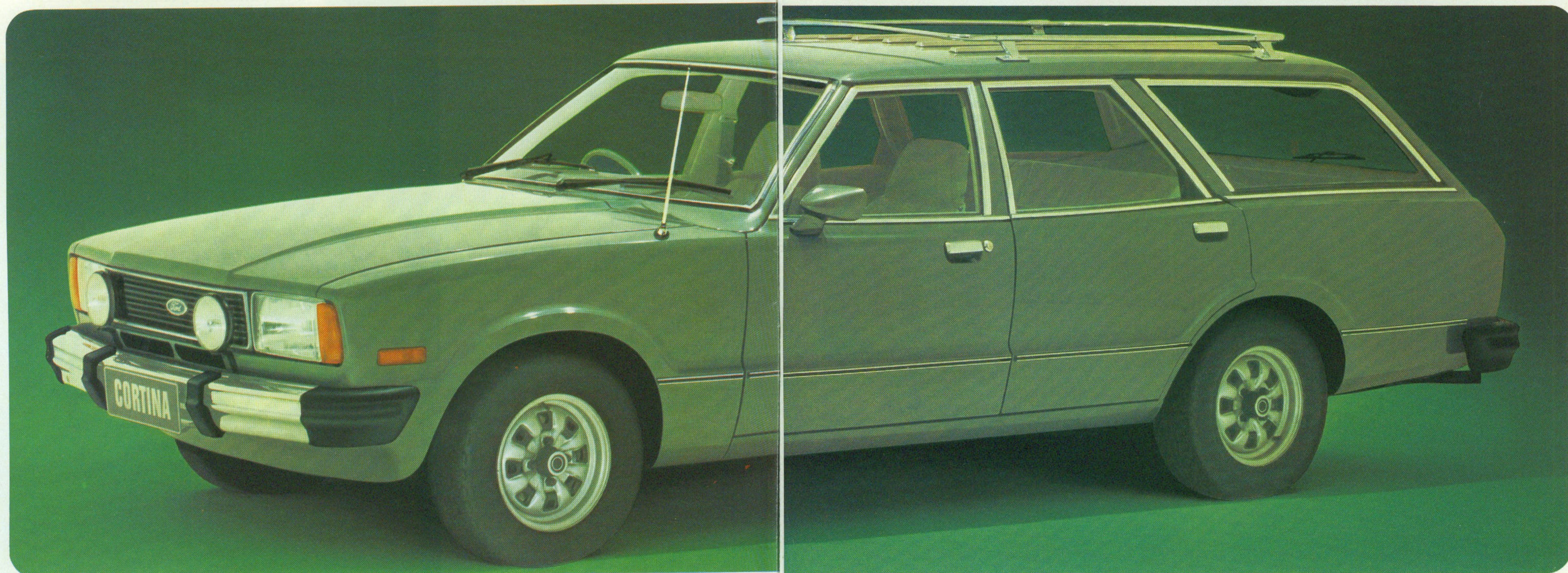
- ★ Quartz halogen headlights
- ★ Deep-section bumper bars with protective rubber end caps
- ★ Interior courtesy light operated by front doors
- ★ 3-speed heater/demister
- ★ Lockable glove box
- ★ Cigarette lighter (illuminated)
- ★ Prismatic day/night interior rear-view mirror
- ★ Black, non-glare windscreen wipers
- ★ Front fender side-marker lights
- ★ Steering column control stalks for
 - (i) Turn/lane change signals, high/low beam, headlight flasher and horn button
 - (ii) Windscreen wash/wipe

FORD CORTINA GL WAGON STANDARD EQUIPMENT HIGHLIGHTS

As for Cortina L Wagon but with these upgraded features:

- ★ Styled sports-type road wheels
 - ★ Carpet in load area
- And with these additional features which are not standard equipment on Cortina L Wagon:
- ★ Bodyside protection mouldings
 - ★ Rear window wash/wipe
 - ★ Front centre console
 - ★ AM push-button radio with lock-down aerial
 - ★ Electric clock
 - ★ Outboard passenger grab handles front and rear
 - ★ Interior courtesy light operated by front and rear doors
 - ★ Electric rear window demister

Illustrated below: Ford Cortina GL interior with optional AM/FM Multiple push-button radio and stereo cassette tape player (available at extra cost).



Illustrated above: Ford Cortina GL Wagon with optional GL Luxury Pack (available at extra cost).

FORD CORTINA GHIA As good as it looks

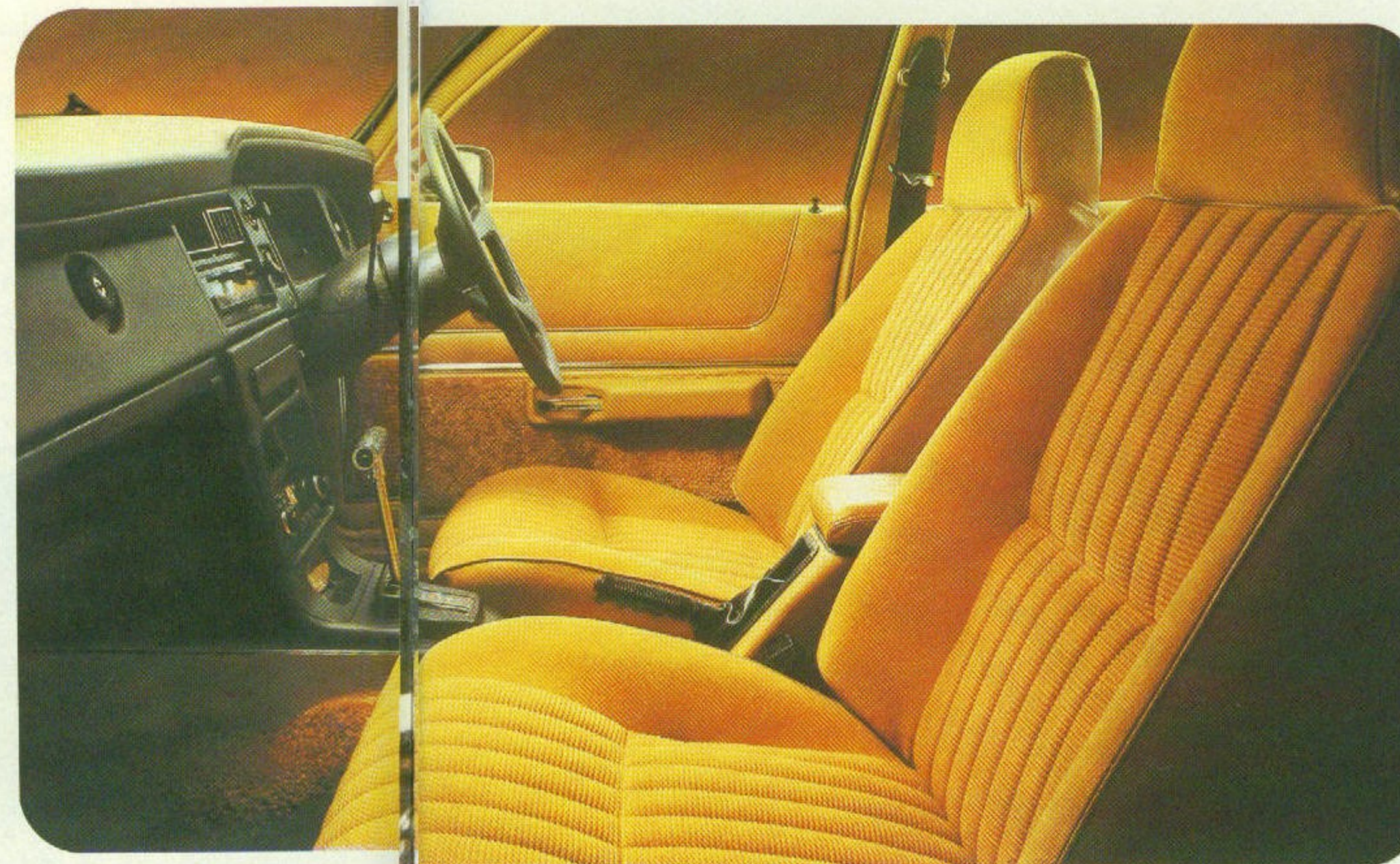
The Cortina Ghia is the top of the line Cortina. Marked by distinctive exterior styling touches, such as vinyl roof and European full alloy, wide-rim wheels, it also features a luxurious interior. Tastefully upholstered with rich cord and cashmere-knit fabrics, the Ghia gives you deeply-cushioned, body-contoured seating, thick, cut pile carpet and extensive sound-insulation. The ride is smooth—and with the added grip of steel belt radial ply tyres. Order it as a 'four' or a 'six' with your choice of console-mounted 4-speed manual floor shift as standard, or optional 3-speed T-bar automatic (available at extra cost).

FORD CORTINA GHIA STANDARD EQUIPMENT HIGHLIGHTS

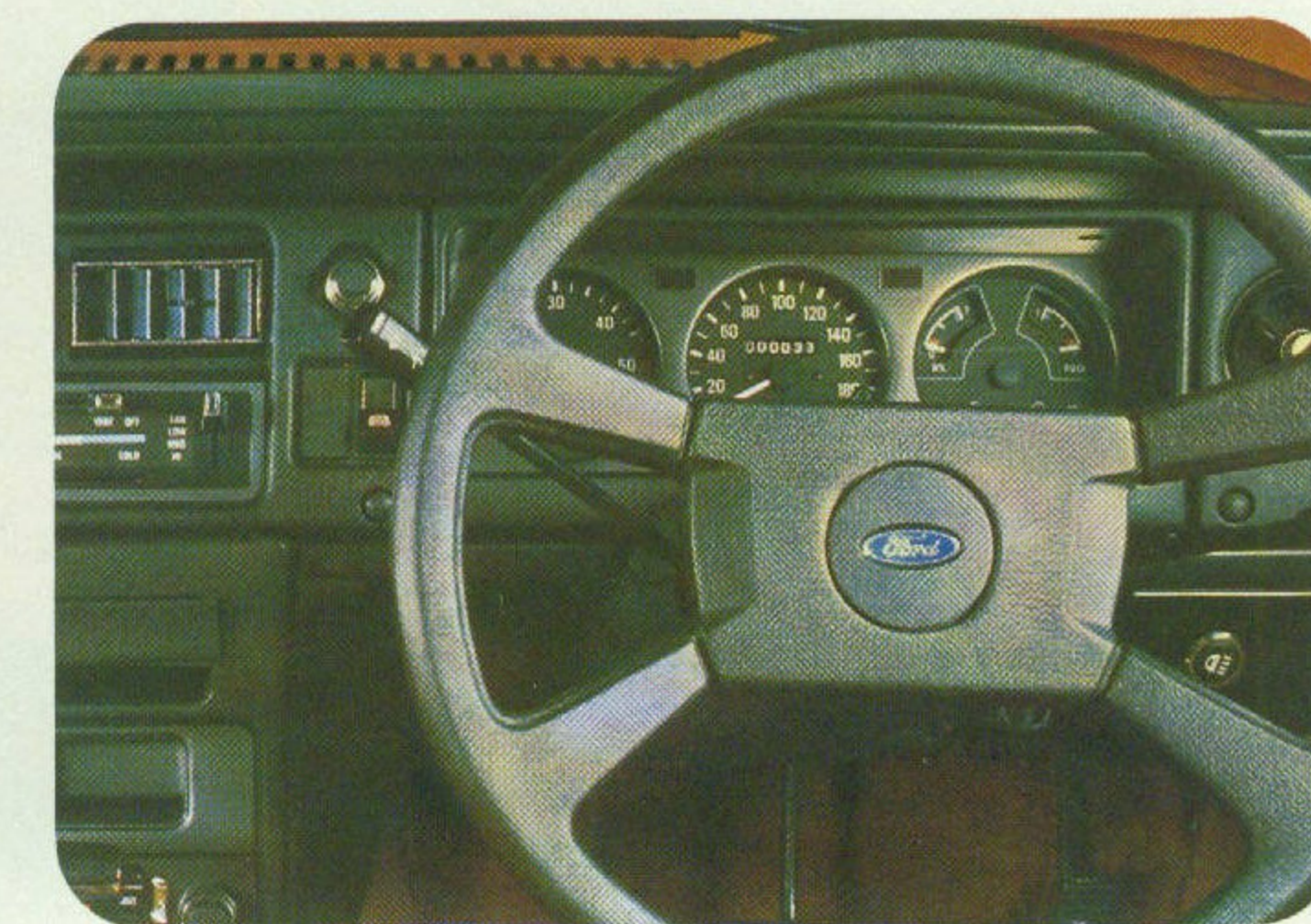
As for Cortina GL but with these upgraded features:

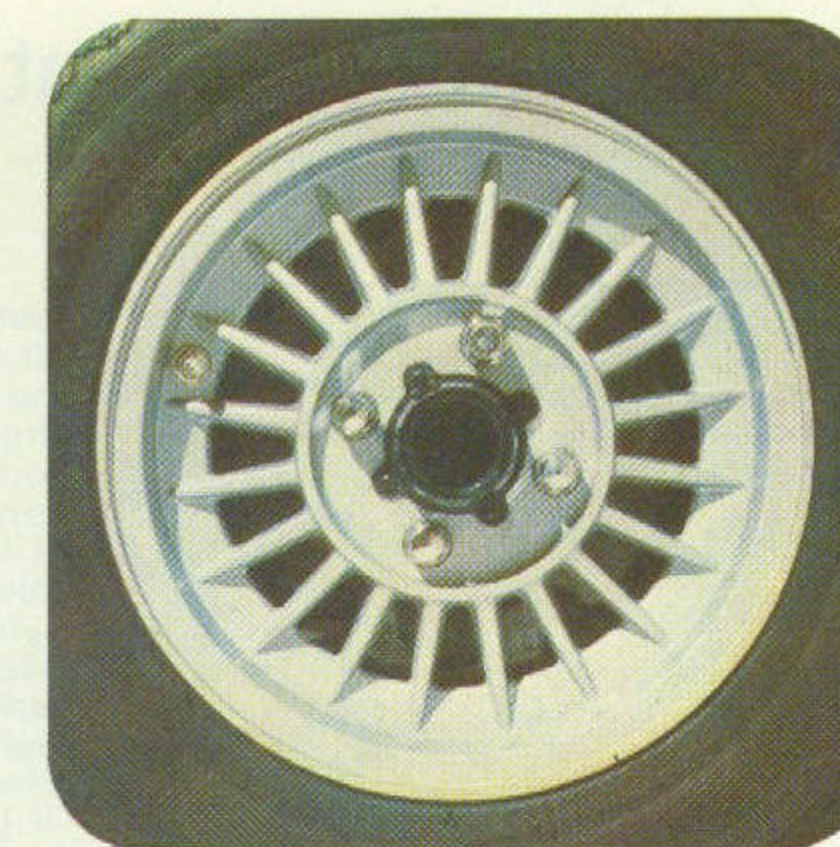
- ★ 4-spoke 'soft-feel' steering wheel

- ★ Cut pile carpet
- ★ Carpeted kick pads on doors
- ★ Cord and cashmere knit cloth seat upholstery
- ★ Intermittent windscreen wipers
- ★ Styled right hand remote control exterior rear-view mirror
- ★ Rear outboard inertia reel seat belts
- ★ European full-alloy road wheels
- ★ And with these additional features which are not standard on Cortina GL:
- ★ Vinyl roof
- ★ Tinted-band, laminated windscreen
- ★ Tinted side and rear glass
- ★ Tachometer, oil gauge and trip meter
- ★ Styled left hand exterior rear-view mirror
- ★ Map pockets in rear of front seats
- ★ Deep-section bodyside protection mouldings
- ★ Bumper rub-strips and overriders
- ★ Carpeted floor in luggage compartment
- ★ Vanity mirror in passenger side sun visor



Interior shown with optional 3-speed T-bar automatic transmission (available at extra cost).





FORD CORTINA GS RALLY PACK OPTION Available at extra cost on L and GL models

The GS Rally Pack is designed to allow you to drive your own Grand Sport touring car... to make your Cortina into a sporty-looking, sports handling machine.

All you do is pick your model... Cortina L or GL... 'six' or 'four'... sedan or wagon. Then add the GS Rally Pack and exciting things happen.

Along the side, bold bodyside tape stripes. Black paint treatment at the front and rear, and around the windscreen and rear window. Black finish bumper bars with protective rubber overriders. "Volante" sports alloy road wheels.

Up front there are twin, long-range halogen driving lights, also black finish to merge in with the grille.

Inside, there's the European 4-spoke 'soft-feel' steering wheel (shown below) and comprehensive instrumentation, including tachometer, trip meter and oil gauge.

At your finger tips, there's the control stalk for intermittent windscreen wipers and washer. And, in sedans, a heavy duty sports handling suspension with increased diameter anti-roll bars and performance-tuned shock absorber valving.

Even the range of colours available with the GS Rally Pack is designed to make you feel a little special. They're

limited to the bolder, more vibrant colours so that your 'Cortina GS' will be a reflection of the way you are.

OTHER CORTINA OPTIONS INCLUDE: **Integrated air conditioning** lets you travel in climate-controlled comfort throughout the year. Dehumidifies the air, too. Available on all Cortina models.

GL Comfort/Convenience Pack available with the GL Sedan. Consists of styled right hand remote control exterior rear-view mirror, left hand exterior rear-view mirror, rear outboard inertia reel seat belts and "Houndstooth" cloth seat upholstery.

GL Luxury Pack available with GL sedan and Wagon. For the sedan it consists of all GL 'Comfort/Convenience Pack' items above, plus: Stereo cassette tape player, long-range driving lights, front and rear bumper overriders and sun roof. For the GL wagon, it consists of styled right hand remote control exterior rear-view mirror, left hand exterior rear-view mirror, stereo cassette tape player, long-range driving lights, front and rear bumper overriders and chrome roof rack.

Power steering reduces steering effort, for ease-of-parking. Variable ratio steering geometry gives good response and requires only 3.2 turns lock-to-lock. (Available with 6-cylinder models only.)

Illustrated below: Ford Cortina GL '4' interior with optional GS Rally Pack and stereo cassette tape player (available at extra cost).



Ford Cortina L, GL and Ghia Options and Specifications (Options are at extra cost)

CONVENIENCE EQUIPMENT	Cortina L Sedan	Cortina L Wagon	Cortina GL Sedan	Cortina GL Wagon	Cortina Ghia
Integrated air conditioning(a)	OPT	OPT	OPT	OPT	OPT
AM push-button radio with lock-down aerial	OPT	OPT	STD	STD	STD
AM/FM Multiplex push-button radio with lock-down aerial	OPT	OPT	OPT	OPT	OPT
Stereo cassette tape player	NA	NA	OPT	OPT	OPT
Sun roof	OPT	NA	OPT	NA	OPT
GL Comfort/Convenience Pack(b)	NA	NA	OPT	NA	NA
GL Luxury Pack(c)	NA	NA	OPT	OPT	NA
Ghia Prestige Pack(d)	NA	NA	NA	NA	OPT
Styled left hand exterior rear-view mirror	OPT	OPT	OPT	OPT	STD
Bodyside protection mouldings(e)	OPT	OPT	STD	STD	NA
Bumper rubstrips and overriders(f)	OPT	OPT	OPT	OPT	STD
Class I Towing Pack(g)	OPT	OPT	OPT	OPT	OPT

SPORTS EQUIPMENT	Cortina L Sedan	Cortina L Wagon	Cortina GL Sedan	Cortina GL Wagon	Cortina Ghia
GS Rally Pack(h)	OPT	OPT	OPT	OPT	NA
GS instrumentation and steering wheel(i)	OPT	OPT	OPT	OPT	STD
Tinted-band, laminated windscreen	OPT	OPT	OPT	OPT	STD
Long-range driving lights(j)	OPT	OPT	OPT	OPT	OPT
"Volante" sports alloy road wheels (available only as part of GS Rally Pack)	OPT	OPT	OPT	OPT	NA

POWER EQUIPMENT	Cortina L Sedan	Cortina L Wagon	Cortina GL Sedan	Cortina GL Wagon	Cortina Ghia
Powersteering(k)	OPT	OPT	OPT	OPT	OPT

APPEARANCE EQUIPMENT	Cortina L Sedan	Cortina L Wagon	Cortina GL Sedan	Cortina GL Wagon	Cortina Ghia
Vinyl roof	OPT	NA	OPT	NA	STD
Metallic paint(l)	OPT	OPT	OPT	OPT	NCO

ENGINE AND TRANSMISSION COMBINATIONS	Cortina L Sedan	Cortina L Wagon	Cortina GL Sedan	Cortina GL Wagon	Cortina Ghia
FOUR-CYLINDER MODELS					
2 litre crossflow 4-cylinder with:					
4-speed manual floor shift	STD	STD	STD	STD	STD
3-speed T-bar automatic	OPT	OPT	OPT	OPT	OPT
SIX-CYLINDER MODELS					
3.3 litre crossflow 6-cylinder with:					
3-speed manual floor shift	STD	STD	STD	STD	NA
3-speed T-bar automatic	OPT	OPT	OPT	OPT	NA
4.1 litre crossflow 6-cylinder with:					
4-speed manual floor shift	OPT	OPT	OPT	OPT	STD
3-speed T-bar automatic	OPT	OPT	OPT	OPT	OPT

TYRE AVAILABILITY	Cortina L Sedan	Cortina L Wagon	Cortina GL Sedan	Cortina GL Wagon	Cortina Ghia
BR78S 13 steel belt radial ply tyres	STD	STD	STD	STD	STD
BR70H 13 steel belt radial ply tyres	OPT	OPT	OPT	OPT	OPT

DIMENSIONS	Sedans		Wagons	
	2 litre 4-cyl. Manual	1998 Auto	3.3 litre 6-cyl.	4.1 litre 6-cyl.
Overall length—without overriders	4376 mm (172.3")	4493 mm (176.9")	4493 mm (176.9")	4544 mm (178.9")
—with overriders	4433 mm (174.5")	4544 mm (178.9")	4544 mm (178.9")	4544 mm (178.9")
Overall width	1699 mm (66.9")	1699 mm (66.9")	1699 mm (66.9")	1699 mm (66.9")
Overall height	1333 mm (52.5")	1342 mm (52.8")	1342 mm (52.8")	1342 mm (52.8")
Wheelbase	2578 mm (101.5")	2578 mm (101.5")	2578 mm (101.5")	2578 mm (101.5")
Track—front and rear	1426 mm (56.1")	1426 mm (56.1")	1426 mm (56.1")	1426 mm (56.1")
Fuel tank capacity	55 litres (12.1 gals)	55 litres (12.1 gals)	55 litres (12.1 gals)	55 litres (12.1 gals)
Turning circle—curb	10.4 m (34 ft.)	10.4 m (34 ft.)	10.4 m (34 ft.)	10.4 m (34 ft.)
Luggage capacity—maximum	0.33 m ³ (11.8 cu. ft.)	—	—	—
Wagon load capacity—to rear seat	—	0.96 m ³ (34 cu. ft.)	—	—
—to front seat (with rear seat folded down)	—	1.81 m ³ (64 cu. ft.)	—	—

ENGINE SPECIFICATIONS	2 litre 4-cyl. Manual	1998 Auto	3.3 litre 6-cyl.	4.1 litre 6-cyl.
Engine displacement(cc)	1998	1998	3280	4100
Bore(mm)	90.8	90.8	93.5	93.5
Stroke(mm)	76.9	76.9	79.1	99.3
Compression ratio(to 1)	9.2	8.2	7.9	9.0

Always discuss your intended purchase carefully with your Ford Dealer before placing your order.

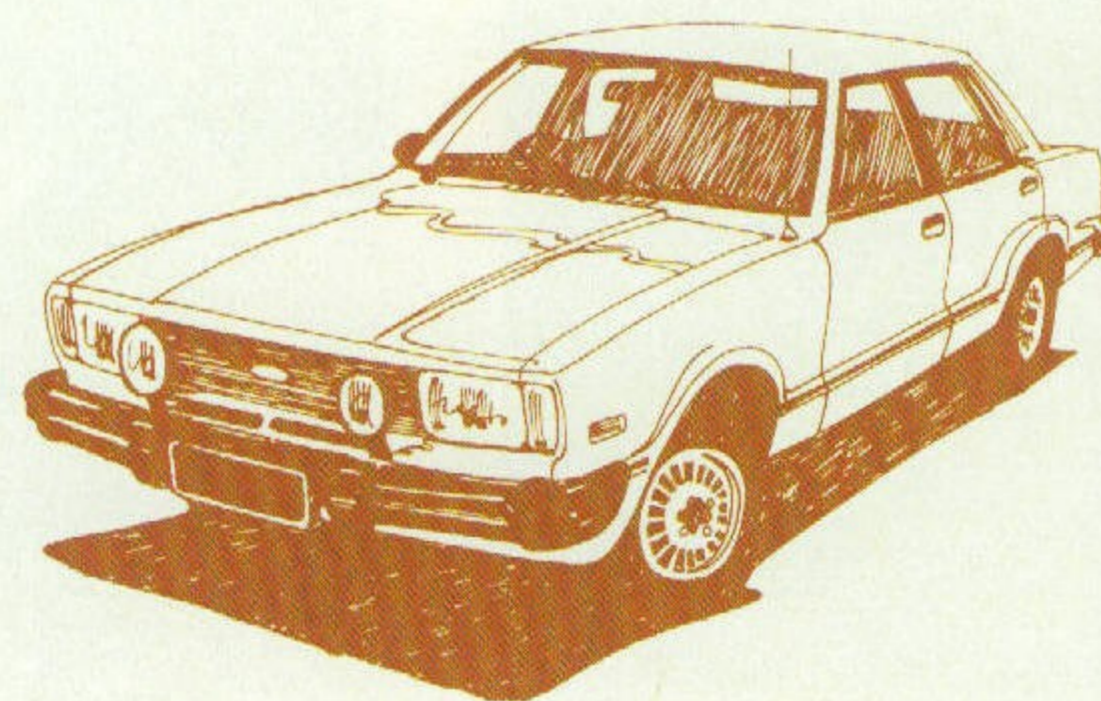
Please note: All measurements, dimensions and capacities referred to above are approximate only.

Footnotes to chart on left:

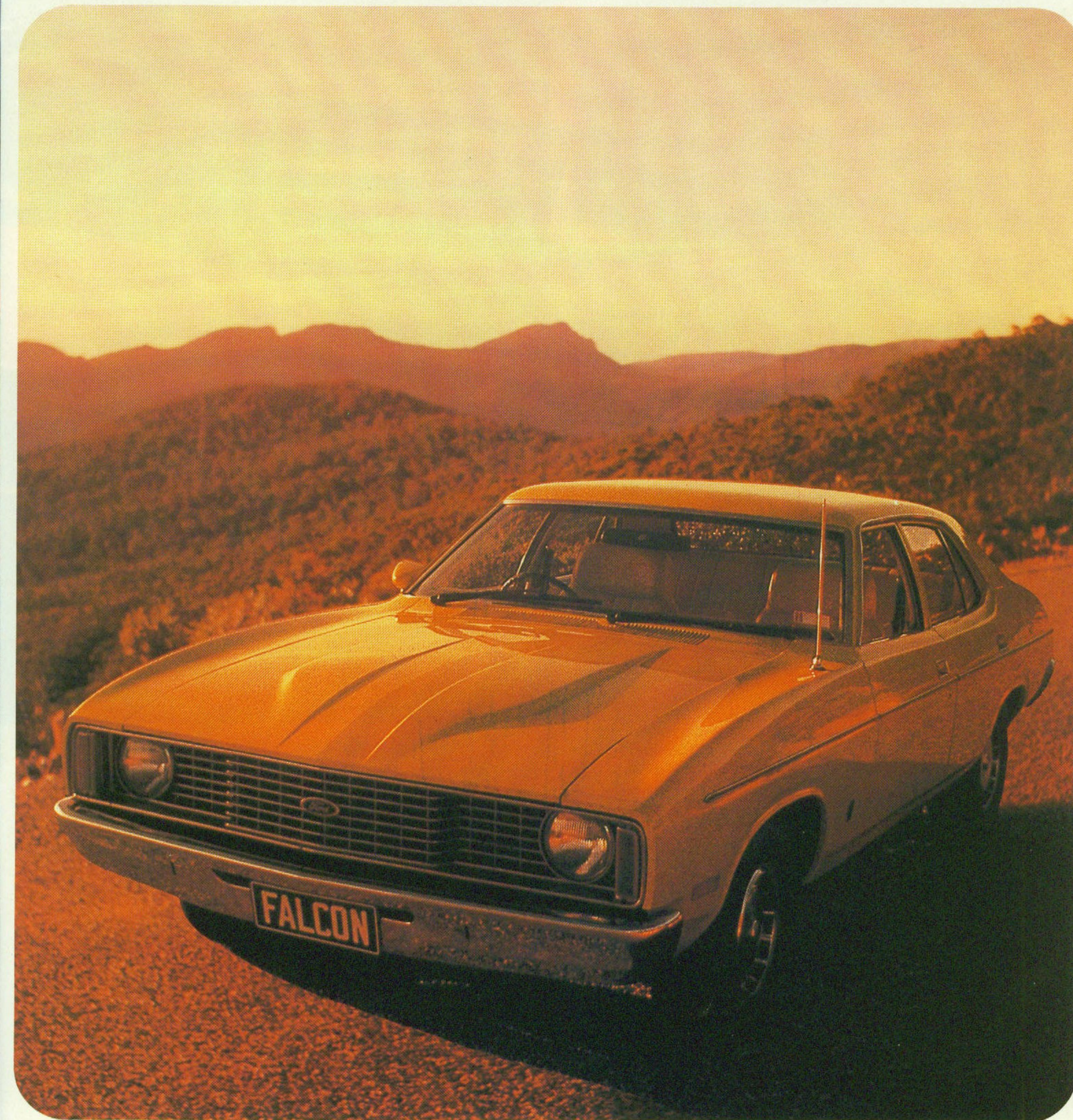
- (a) Air conditioning includes tinted side and rear glass as standard. Tinted rear liftgate window is not available on Cortina L Wagon. Air conditioning is standard with Ghia Prestige Pack.
- (b) GL Comfort/Convenience Pack is available on GL Sedan only. Consists of styled right hand remote control exterior rear-view mirror, styled left hand exterior rear-view mirror, rear seat inertia reel seat belts and "Houndstooth" cloth trim seat-facings.
- (c) GL Luxury Pack is available on GL Sedan and Wagon only. For the Sedan it consists of all GL Comfort/Convenience Pack items above, plus: stereo cassette tape player, long-range driving lights, front and rear bumper overriders and sun roof. For the GL wagon it consists of styled right hand remote control exterior rear-view mirror, styled left hand exterior rear-view mirror, stereo cassette tape player, long-range driving lights, front and rear bumper overriders and chrome roof rack.
- (d) The Ghia Prestige Pack consists of sun roof, stereo cassette tape player, integrated air conditioning and power steering. Available only with 6-cylinder engines.
- (e) Bodyside protection mouldings are not available with GS Rally Pack. (Deep section mouldings are standard on Cortina Ghia.)
- (f) Bumper rub strips and overriders are not available with GS Rally Pack, GL Luxury Pack or long-range driving lights options.
- (g) Class I Towing Pack comprises tow bar, gooseneck, wiring, uprated flasher unit and, on sedans only, heavy duty sports handling suspension. Towing capacity of up to 907 kg (2000 lbs).
- (h) GS Rally Pack comprises comprehensive instrumentation, 4-spoke 'soft feel' steering wheel, intermittent windscreen wipers, bodyside tape stripes, black finish driving lights, bumper overriders, black paint treatment, "Volante" sports alloy road wheels and sports handling suspension (sedans only).
- (i) This option comprises comprehensive instrumentation including tachometer, trip meter and oil pressure gauge plus the 4-spoke 'soft-feel' steering wheel.
- (j) Long-range driving lights are standard with GL Luxury Pack. Front and rear bumper overriders are standard with this option.
- (k) Power steering available only with 6-cylinder engines.
- (l) Consult the Ford Colour Selector or your Ford Dealer to determine which colours are metallic.

Codes to chart on left:

STD means standard equipment.
OPT means optional at extra cost.
NA means not available on that model.
NCO means no cost option.



Ford Falcon A great Australian road car



Illustrated above: Ford Falcon 500 Sedan with optional 4.1 litre 6-cylinder engine (available at extra cost).



FORD FALCON SEDAN AND WAGON

Deliver the goods with comfort, performance and style

Because it's for business it doesn't mean that a sedan or wagon can't be a pleasure to own and drive. Falcon Sedans and Wagons go a long way to satisfy the needs of man, as well as the essential economic needs of business.

Power: Crossflow 6-cylinder engines that deliver great performance.

Economy: The 3.3 litre "six" does the job on money-saving standard fuel.

Automatic transmission option: For extra cost you can have the convenience

of 3-speed automatic transmission.

Braking Power: Power assisted front disc brakes give Falcon Sedan and Wagon real stopping power. And radial ply tyres are standard on Falcon Sedan.

Comfort: There's power assisted ventilation. A deeply padded bench seat with centre armrest. The convenience of inertia reel seat belts for driver and front seat passenger, and a great windscreen wiper/wash system, with an anti-lift vane fitted to the driver's side blade.



FORD FALCON SEDAN AND WAGON STANDARD EQUIPMENT HIGHLIGHTS

- ★ 3.3 litre crossflow 6-cylinder engine
- ★ 3-speed manual column shift transmission
- ★ 185SR 14 radial ply tyres (sedan)
- ★ 7.75L 14 crossply tyres (wagon)
- ★ Touring suspension (Sedan only)
- ★ Front bench seat with centre armrest
- ★ Outboard inertia reel front seat belts
- ★ Prismatic day/night interior rear view mirror
- ★ Power assisted ventilation
- ★ 3-speed heater/demister with illuminated controls
- ★ 2-speed windscreen wipers with anti-lift vane fitted to driver's side blade
- ★ 4-jet windscreen washers
- ★ Steering column control stalk for turn/lane change signals, high/low beam, headlight flasher and horn button
- ★ Rubber floor mat in passenger compartment
- ★ Vinyl seat upholstery
- ★ Styled right hand exterior rear-view mirror
- ★ Lockable passenger side glove compartment
- ★ Front passenger side parcel shelf and driver's side trinket tray
- ★ Rubber mat on luggage compartment floor (sedan only)

FORD FALCON 500 SEDAN

It never felt better

In road handling, performance and driver comfort, Ford Falcon 500 has earned a reputation over the years as a great Australian road car.

Turn the key and feel Falcon 500 in action and you'll find that it can give you real driving pleasure... in city traffic... on the freeway and over country roads.

You'll feel the comfort of 'Road Car' ride... a controlled, smooth, steady ride that comes from Falcon's combination of touring suspension matched with steel belt radials, wide track and long wheelbase.

You'll feel the comfort of contoured reclining front bucket seats... and a driver's position, in relation to the steering wheel and foot controls, that helps make you feel comfortable and relaxed during long periods behind the wheel.

You'll find many other features that will help make you feel good in Falcon, too... such as perforated vinyl seat upholstery, loop pile carpet and an AM push-button radio with lock-down aerial.

Drive it yourself soon... and see!

FORD FALCON 500 SEDAN STANDARD EQUIPMENT HIGHLIGHTS

- ★ 3.3 litre crossflow 6-cylinder engine
- ★ 3-speed manual column shift transmission
- ★ Touring suspension
- ★ Power assisted front disc brakes
- ★ ER78 S14 steel belt radial ply tyres
- ★ Styled wheelcovers
- ★ Quartz halogen headlights
- ★ Bodyside protection mouldings
- ★ Reclining front bucket seats with perforated vinyl upholstery
- ★ Folding front centre armrest
- ★ Loop pile carpet
- ★ AM push-button radio with lock-down aerial
- ★ Power assisted ventilation
- ★ 3-speed heater/demister with illuminated controls
- ★ Electric rear window demister
- ★ Steering column stalk for turn/lane change signals, high/low beam, headlight flasher and horn button
- ★ 2-speed windscreen wipers with anti-lift vane fitted to driver's side blade
- ★ 4-jet windscreen washers
- ★ Prismatic day/night interior rear-view mirror
- ★ Styled right hand exterior rear-view mirror
- ★ Interior courtesy light operated by front doors
- ★ Front passenger side parcel shelf and driver's side trinket tray
- ★ Lockable front passenger side glove box
- ★ Cigarette lighter built into front centre ashtray
- ★ Outboard inertia reel front seat belts



Illustrated above and below: Ford Falcon 500 Sedan with optional 4.1 litre 6-cylinder engine (available at extra cost).





Illustrated above: Ford Fairmont Wagon.

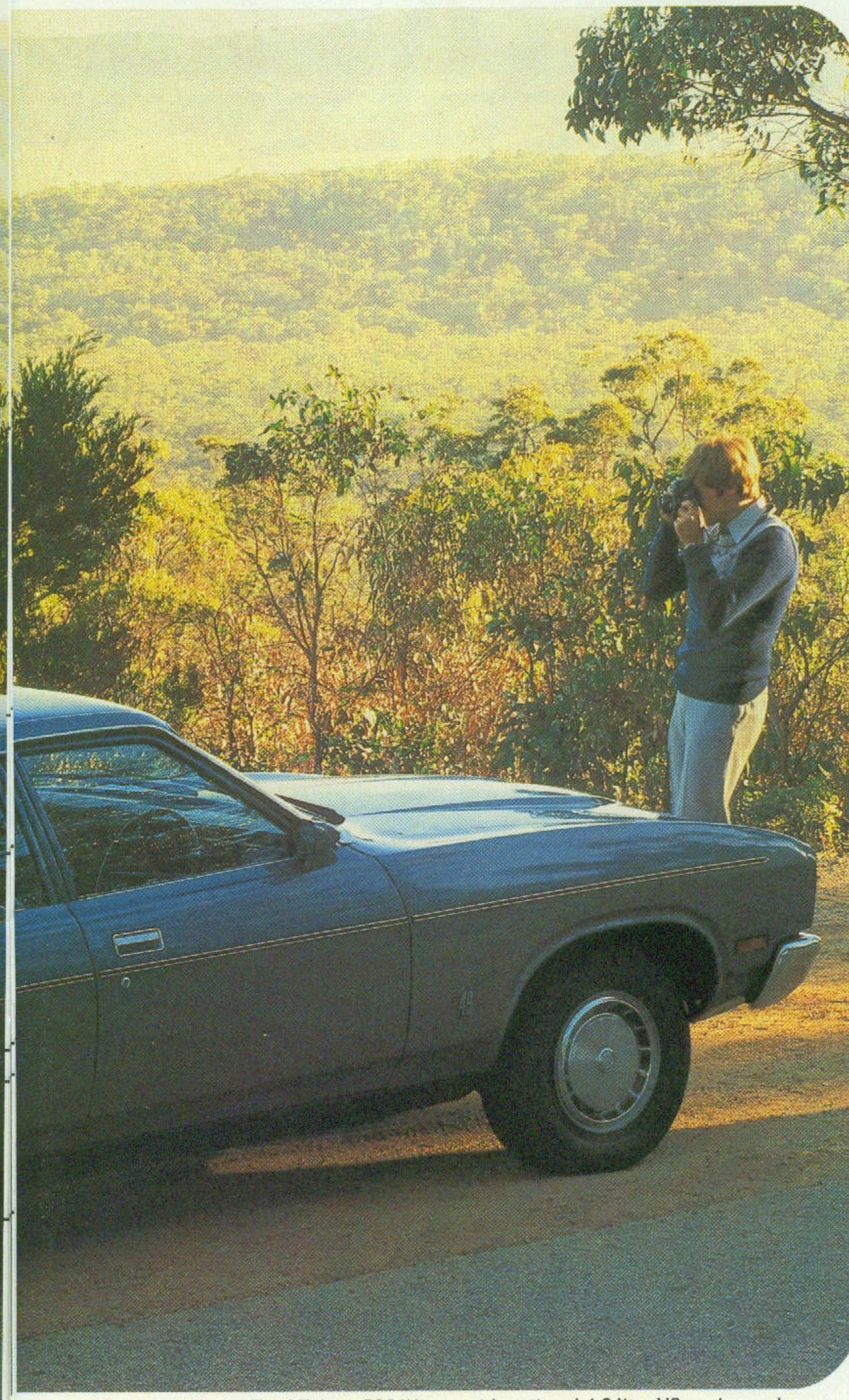
FORD FALCON 500 & FAIRMONT WAGONS

Big wagons...loaded with comfort and features

Falcon 500 and Fairmont wagons are year-round propositions—for shopping, family trips or holidays. Both treat you to the similar comfort features of their respective sedans...with the added advantage of a large loadspace.

Fairmont wagon has two other big loading advantages. A 'Dual Action' tailgate which opens like a door or lowers like a conventional tailgate, and a chrome finish roof rack. The 'Dual Action' tailgate is also available at extra cost on Falcon 500 wagon. A folding rear-facing third seat in the load area is available at extra cost on all Falcon wagons.

Falcon 500 wagon and Fairmont wagon both have engines that deliver great performance. The standard engine in Falcon 500 wagon is the 3.3 litre 'six' while Fairmont wagon has the 4.1 litre 'six'.



Illustrated Above: Ford Falcon 500 Wagon with optional 4.9 litre V8 engine and rear-facing third seat (available at extra cost).

FORD FALCON 500 WAGON STANDARD EQUIPMENT HIGHLIGHTS

- ★ 3.3 litre crossflow 6-cylinder engine
- ★ 3-speed manual column shift transmission
- ★ Power assisted front disc brakes
- ★ FR78 S14 steel belt radial ply tyres
- ★ Styled wheelcovers
- ★ Quartz halogen headlights
- ★ Bodyside protection mouldings
- ★ Reclining front bucket seats with perforated vinyl upholstery
- ★ Folding front centre armrest
- ★ Loop pile carpet
- ★ AM push-button radio with lock-down aerial
- ★ Power assisted ventilation
- ★ 3-speed heater/demister with illuminated controls
- ★ Steering column control stalk for turn/lane change signals, high/low beam, headlight flasher and horn button
- ★ 2-speed windscreen wipers with anti-lift vane fitted to driver's side blade
- ★ 4-jet windscreen washers
- ★ Prismatic day/night interior rear-view mirror
- ★ Styled right hand exterior rear-view mirror
- ★ Interior courtesy light operated by front doors
- ★ Front passenger side parcel shelf and driver's side trinket tray
- ★ Lockable front passenger side glove box
- ★ Cigarette lighter built into front centre ashtray
- ★ Outboard inertia reel front seat belts

FORD FAIRMONT WAGON STANDARD EQUIPMENT HIGHLIGHTS

As for Falcon 500 wagon but with these upgraded features:

- ★ 4.1 litre crossflow 6-cylinder engine
- ★ 3-speed T-bar automatic transmission
- ★ 'Dual Action' tailgate
- ★ Rectangular quartz halogen headlights
- ★ Intermittent windscreen wipers with anti-lift vane fitted to driver's side blade
- ★ Front centre console with armrest and storage bin
- ★ Cut pile carpet
- ★ Styled right hand remote control exterior rear-view mirror
- ★ Interior courtesy light operated by all four doors and with these additional features which are not standard equipment on Falcon 500 wagon:
- ★ Electric clock
- ★ Carpeted floor in load area
- ★ Vanity mirror in passenger side sun visor
- ★ Styled left hand exterior rear-view mirror
- ★ Chrome finish roof rack



FORD FALCON GS HARDTOP

Style on the bold side

If your style is on the bold side, Falcon GS spells it out in a striking, spirited way of travelling. And listed below is what makes Falcon GS Hardtop the bold one of the breed.



Illustrated Above: Foreground—Ford Falcon GS Hardtop Background—The car featured is a specially prepared racing car not available from Ford Motor Company of Australia Limited.

FORD FALCON GS HARDTOP STANDARD EQUIPMENT HIGHLIGHTS

- ★ 4.1 litre crossflow 6-cylinder engine
- ★ 4-speed manual floor shift transmission
- ★ Touring suspension
- ★ Power assisted front disc brakes
- ★ ER78S 14 steel belt radial ply tyres
- ★ Slotted steel wheels with chrome trim rings
- ★ Quartz halogen headlights
- ★ Long-range driving lights
- ★ Bonnet scoops
- ★ Bodyside protection mouldings
- ★ Reclining front bucket seats with 'Houndstooth' cloth upholstery

- ★ Front centre console with armrest and storage bin
- ★ Cut pile carpet
- ★ AM push-button radio with lock-down aerial
- ★ Comprehensive instrumentation including tachometer
- ★ Power-assisted ventilation
- ★ 3-speed heater/demister with illuminated controls
- ★ Electric rear window demister
- ★ Steering column control stalk for turn/lane change signals, high/low beam, headlight flasher and horn button
- ★ 2-speed windscreen wipers with anti-lift vane fitted to driver's side blade
- ★ 4-jet windscreen washers

- ★ Prismatic day/night interior rear-view mirror
- ★ Styled right and left hand exterior rear-view mirrors
- ★ Front and rear bumper overriders
- ★ Interior courtesy light operated by both doors
- ★ Front passenger side parcel shelf and driver's side trinket tray
- ★ Lockable front passenger side glove box
- ★ Cigarette lighter built into front centre ashtray
- ★ Outboard inertia reel front seat belts
- ★ Rear quarter panel scoops
- ★ Distinctive paint treatment



Illustrated Above: Ford Fairmont Hardtop interior with optional 4-speed manual floor shift transmission (available at reduced cost).

FORD FAIRMONT HARDTOP First-class travel...sporting style!

The Fairmont heritage of superbly appointed motoring...dramatically expressed in hardtop design. Smooth, powerful...a distinctive way to express good taste, with flair, in your driving style.

FORD FAIRMONT HARDTOP STANDARD EQUIPMENT HIGHLIGHTS:

As for Falcon GS Hardtop but with these upgraded features:

- ★ 3-speed T-bar automatic transmission
- ★ Variable ratio power steering
- ★ Sports alloy road wheels
- ★ Rectangular quartz halogen headlights (driving lights are not available)
- ★ Tinted-band, laminated windscreen
- ★ Styled right hand remote control exterior rear-view mirror
- ★ Intermittent windscreen wipers with anti-lift vane fitted to driver's side blade
- ★ Outboard inertia reel front and rear seat belts and with these additional features which are not standard equipment on Falcon GS Hardtop
- ★ Electric clock
- ★ Carpeted luggage compartment floor

Please Note: Rear quarter panel scoops are not available on Fairmont Hardtop





FORD FAIRMONT SEDAN

Quietly rewarding, luxuriously satisfying

Ford Fairmont has a distinguished all-round appearance that makes it recognisable in any business or social gathering. A highly appointed car with power, strength and 'Road Car' ride to give you controlled handling both off and on the highway.

Among the many standard features in Fairmont, you'll find beautifully contoured, reclining front bucket seats upholstered in soft grain vinyls...colour-keyed cut pile carpet...sports console with 3-speed T-bar automatic transmission...front and rear out-board inertia reel seat belts...intermittent windscreen wipers...electric rear window demister.

FORD FAIRMONT SEDAN STANDARD EQUIPMENT HIGHLIGHTS

as for Falcon 500 sedan but with these upgraded features:

- ★ 4.1 litre crossflow 6-cylinder engine
- ★ 3-speed T-bar automatic transmission
- ★ Rectangular quartz halogen headlights
- ★ Intermittent windscreen wipers with anti-lift vane fitted to driver's side blade
- ★ Front centre console with armrest and storage bin
- ★ Cut pile carpet
- ★ Styled right hand remote control exterior rear-view mirror
- ★ Interior courtesy lights operated by all four doors

and with these additional features which are not standard on Falcon 500 sedan

- ★ Electric clock
- ★ Styled left hand exterior rear-view mirror
- ★ Vanity mirror in passenger side sun visor
- ★ Folding centre armrest in rear compartment
- ★ Carpeted luggage compartment floor

Illustrated above: Ford Fairmont Sedan with optional 4.9 litre V8 engine and vinyl roof (available at extra cost).



FORD FAIRMONT GXL

The Australian sports sedan—in the European tradition

Fairmont GXL has the performance, handling and many of the comfort features you'd expect from a European style sports sedan... with a major difference... Fairmont GXL is designed and built in Australia for Australian conditions.

From start to finish, Fairmont GXL is a driver's car—equipped with a powerful 4.1 litre crossflow 6-cylinder engine, T-bar automatic transmission, power steering, 4-wheel power disc brakes, touring suspension, limited slip differential, steel belt radial tyres, alloy sports road wheels and quartz halogen headlights.

FORD FAIRMONT GXL STANDARD EQUIPMENT HIGHLIGHTS

As for Fairmont Sedan but with these upgraded features:

- ★ 4-wheel power disc brakes
- ★ Sports alloy road wheels
- ★ Limited slip differential
- ★ Tinted-band, laminated windscreen
- ★ Tinted side and rear glass
- ★ 'Cord' cloth seat upholstery
- ★ 'Soft-feel' steering wheel

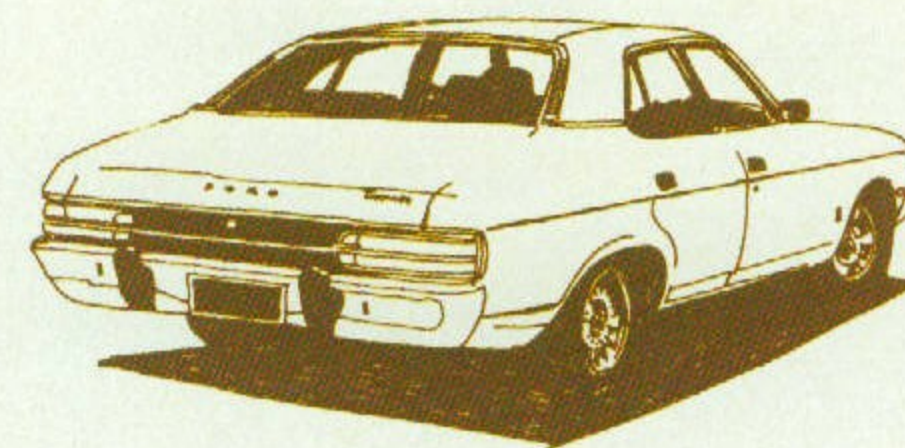
and with these additional features which are not standard equipment on Fairmont Sedan:

- ★ Bonnet scoops
- ★ Front and rear bumper overriders
- ★ Power steering
- ★ Comprehensive instrumentation including tachometer
- ★ Map pockets on rear of front seats

Illustrated above: Ford Fairmont GXL with optional 4.9 litre V8 engine (available at extra cost).

Ford Falcon, Falcon 500 and Fairmont Options

(available at extra cost)



	
"Houndstooth" cloth seat upholstery	Sports alloy road wheels
	
Power operated windows	GS Rally Pack option instrumentation
	
Tinted-band, laminated windscreen	3-speed T-bar automatic transmission
	
Integrated air conditioning	Styled right hand remote control exterior rear-view mirror

	Falcon Sedan	Falcon Wagon	Falcon 500 Sedan	Falcon 500 Wagon	Falcon GS Hardtop	Fairmont Sedan	Fairmont Wagon	Fairmont Hardtop	Fairmont GXL	
CONVENIENCE EQUIPMENT										
Integrated air conditioning (a)	OPT	OPT	OPT	OPT	OPT	OPT	OPT	OPT	OPT	
Tinted side and rear glass (b)	OPT	OPT	OPT	OPT	OPT	OPT	OPT	OPT	STD	
AM push-button radio with lock-down aerial	OPT	OPT	STD	STD	STD	STD	STD	STD	STD	
AM/FM Multiplex push-button radio with lock-down aerial	OPT	OPT	OPT	OPT	OPT	OPT	OPT	OPT	OPT	
Stereo cassette tape player	OPT	OPT	OPT	OPT	OPT	OPT	OPT	OPT	OPT	
Sun roof (c)	OPT	NA	OPT	NA	OPT	OPT	NA	OPT	OPT	
Cloth seat upholstery—"Houndstooth" pattern	NA	NA	OPT	OPT	STD	OPT	OPT	STD	NA	
—"Cord"	NA	NA	NA	NA	NA	NA	NA	NA	STD	
Front bench seat (non-perforated upholstery)	STD	STD	O/R	O/R	NA	NA	NA	NA	NA	
Loop pile carpet	OPT	OPT	STD	STD	NA	NA	NA	NA	NA	
Cut pile carpet	NA	NA	NA	NA	STD	STD	STD	STD	STD	
Intermittent windscreen wipers	OPT	OPT	OPT	OPT	OPT	STD	STD	STD	STD	
Rear outboard inertia reel seat belts	OPT	NA	OPT	NA	OPT	STD	NA	STD	STD	
Styled left hand exterior rear-view mirror (d)	OPT	OPT	OPT	OPT	STD	STD	STD	STD	STD	
Styled right hand remote control exterior rear-view mirror	OPT	OPT	OPT	OPT	OPT	STD	STD	STD	STD	
Bumper overriders	OPT	OPT	OPT	OPT	STD	OPT	OPT	STD	STD	
Wagon third seat	NA	OPT	NA	OPT	NA	NA	OPT	NA	NA	
Wagon "dual action" tailgate	NA	OPT	NA	OPT	NA	NA	STD	NA	NA	
Wagon dust deflector	NA	OPT	NA	OPT	NA	NA	OPT	NA	NA	
SPORTS EQUIPMENT										
GS Rally Pack (e)	NA	NA	OPT	OPT	STD	OPT	OPT	NA	NA	
Tinted-band, laminated windscreen	OPT	OPT	OPT	OPT	OPT	OPT	OPT	STD	STD	
Long-range driving lights (f)	OPT	OPT	OPT	OPT	STD	NA	NA	NA	NA	
4-wheel power disc brakes (g)	OPT	OPT	OPT	OPT	OPT	OPT	OPT	OPT	STD	
Sports alloy road wheels	OPT	OPT	OPT	OPT	OPT	OPT	OPT	STD	STD	
Dual exhaust system (h)	OPT	NA	OPT	NA	OPT	OPT	NA	OPT	OPT	
Limited slip differential (i)	OPT	OPT	OPT	OPT	OPT	OPT	OPT	OPT	STD	
Long-range fuel tank—120.5 litres (26.5 gallons)	OPT	NA	OPT	NA	OPT	OPT	NA	OPT	OPT	
POWER EQUIPMENT										
Power steering (j)	OPT	OPT	OPT	OPT	OPT	OPT	OPT	STD	STD	
Power operated windows	NA	NA	NA	NA	NA	OPT	OPT	OPT	OPT	
Power operated tailgate window	NA	OPT	NA	OPT	NA	NA	OPT	NA	NA	
HEAVY DUTY EQUIPMENT										
Outback Pack (k)	OPT	OPT	OPT	OPT	OPT	OPT	OPT	OPT	OPT	
Heavy duty suspension (l)	NCO	OPT	NCO	OPT	NCO	NCO	OPT	NCO	NCO	
Class I Towing Pack	OPT	OPT	OPT	OPT	OPT	OPT	OPT	OPT	OPT	
Heavy Duty Pack For Towing (m)	OPT	OPT	OPT	OPT	NA	OPT	OPT	NA	OPT	
Class II Towing Pack (m)	OPT	OPT	OPT	OPT	NA	OPT	OPT	NA	OPT	
APPEARANCE EQUIPMENT										
Vinyl roof	OPT	NA	OPT	NA	OPT	OPT	NA	OPT	OPT	
White roof	OPT	OPT	OPT	OPT	OPT	OPT	OPT	OPT	OPT	
Metallic paint (n)	OPT	OPT	OPT	OPT	OPT	NCO	NCO	NCO	NCO	

Footnotes to chart on left:

(a) Tinted side and rear glass is mandatory with air conditioning. Power steering is mandatory at extra cost when air conditioning is fitted with V8 engine.

(b) Tinted side and rear glass is mandatory with air conditioning.

(c) Vinyl roof is mandatory at extra cost when this option is specified.

(d) This option is standard when GS Rally Pack is specified.

(e) GS Rally Pack includes: Distinctive paint treatment; slotted steel road wheels, bonnet scoops, comprehensive instrumentation including tachometer, oil pressure, temperature and fuel gauges, bumper overriders, electric clock (where not standard equipment), 'soft-feel' sports steering wheel, map reading light, styled left hand exterior rear-view mirror, long-range driving lights (not available on Fairmont).

(f) Long-range driving lights are standard when GS Rally Pack is specified on Falcon 500.

(g) 4-wheel power disc brakes are optional at extra cost with 4.9 litre V8 engine and mandatory at extra cost with 5.8 litre V8 engine.

(h) The dual exhaust system is available at extra cost only with 4.9 litre and 5.8 litre V8 engines.

(i) The limited slip differential is not available with the 3.3 litre engine. It is mandatory at extra cost when the 4.9 litre engine with manual transmission is specified, or when the 4-wheel power disc brakes or the 5.8 litre engine is specified.

(j) Power steering is not available with 3-speed manual column shift transmission.

(k) Outback Pack consists of heavy duty shock absorbers and springs, increased diameter stabiliser bar, engine stone guard and heavy duty air cleaner.

(l) Heavy duty suspension is included in the Outback Pack, Heavy Duty Pack For Towing and Class II Towing Pack options.

(m) This option is only available with V8 engines and automatic transmission. Heavy duty suspension is standard when this option is specified.

(n) Consult the Ford Colour Selector or your Ford Dealer to determine which colours are metallic.

Codes to chart on left:
 STD means standard equipment.
 OPT means optional at extra cost.
 NA means not available on that model.
 NCO means no cost option.
 O/R means option at reduced cost.

CLASS I TOWING PACK

1. Capable of towing up to 907 kgs (2000 lbs).
2. Consists of:
 - Tow bar.
 - Chrome gooseneck.
 - 7-pin electrical connector.
 - Upgraded flasher unit and electricals.

HEAVY DUTY PACK FOR TOWING (CODE 21)

1. This base option is for the convenience of buyers who already own a compatible tow bar and wish to transfer it to their new vehicle. This Pack upgrades the vehicle specification to enable towing of loads up to 1587 kgs (3500 lbs).
2. It consists of:
 - Automatic transmission oil cooler.
 - Larger cooling capacity heavy duty radiator on 4.9 litre models.
 - Heavy duty suspension including heavy duty

shock absorbers and springs, increased diameter stabiliser bar and an increased ride height. (Heavy duty suspension is standard on Falcon and Falcon 500 (Utilities and Vans.))

- 7-pin electrical connector.
- Upgraded flasher unit.

3. 4.9 litre or 5.8 litre engine, automatic transmission and FR78S steel belt radial ply tyres must be specified when the Heavy Duty Pack For Towing is ordered.

CLASS II TOWING PACK (CODE 22)
 This Pack upgrades the vehicle specification to tow loads up to 1587 kgs (3500 lbs). It consists of all items in the Heavy Duty Pack For Towing (Code 21) but with these additional features:

- Load distributing tow bar with body siderail reinforcements
- Adjustable height towing hitch
- Hitch box cover

A Spring Bar Kit is not supplied as part of the Class II Towing Pack but is required for a comprehensive towing kit. A Spring Bar Kit is available as an extra cost accessory from your Ford Dealer. A 4000 lb. rated towball is not supplied.

Ford Falcon, Falcon 500 and Fairmont Specifications

(Options are at extra cost)

Ford Recreational Vehicles.

You're at home on the road.

ENGINE AND TRANSMISSION COMBINATIONS	Falcon Sedan	Falcon Wagon	Falcon 500 Sedan	Falcon 500 Wagon	Falcon GS Hardtop	Fairmont Sedan	Fairmont Wagon	Fairmont Hardtop	Fairmont GXL
3.3 litre crossflow 6-cylinder with:									
3-speed manual column shift(1)	STD	STD	STD	STD	NA	NA	NA	NA	NA
3-speed automatic column shift	OPT	OPT	OPT	NA	NA	NA	NA	NA	NA
4.1 litre crossflow 6-cylinder with:									
3-speed manual column shift(1)	OPT	OPT	OPT	OPT	NA	NA	NA	NA	NA
4-speed manual floor shift(2)	NA	NA	OPT	OPT	STD	OPT	OPT	O/R	NA
3-speed automatic column shift	OPT	OPT	OPT	OPT	NA	OPT	OPT	NA	NA
3-speed T-bar automatic(2)	NA	NA	OPT	OPT	OPT	STD	STD	STD	STD
4.9 litre 4-barrel V8 with:									
4-speed manual floor shift(2) (4)	NA	NA	OPT	OPT	OPT	OPT	OPT	OPT	OPT
3-speed automatic column shift	OPT	OPT	OPT	OPT	NA	OPT	OPT	NA	NA
3-speed T-bar automatic(2)	NA	NA	OPT	OPT	OPT	OPT	OPT	OPT	OPT
GT POWER PACK OPTION									
5.8 litre 4-barrel V8 with:									
4-speed manual floor shift(5) (6)	NA	NA	OPT	NA	OPT	OPT	NA	OPT	OPT
3-speed automatic column shift	NA	NA	OPT	OPT	NA	OPT	OPT	NA	NA
3-speed T-bar automatic(2)	NA	NA	OPT	OPT	OPT	OPT	OPT	OPT	OPT

Footnotes to above chart:

(1) Power steering is not available with 3-speed manual column shift transmission.

(2) Sports console must be fitted with floor-mounted transmissions and is not available with bench seat.

(3) Power steering is mandatory at extra cost when air conditioning is fitted with V8 engines.

(4) Limited slip differential mandatory at extra cost with 4.9 litre V8 engine and manual transmission.

(5) Mandatory equipment, at extra cost, with the 5.8 litre engine: 4-wheel disc brakes, limited slip differential, sports handling suspension or heavy duty suspension, FR70 H14 steel belt radial ply tyres.

(6) When the Falcon GS Hardtop is ordered with this engine and transmission combination it is subject to change without notice as is necessary to comply with touring car homologation requirements.

TYRE AVAILABILITY	Falcon Sedan	Falcon Wagon	Falcon 500 Sedan	Falcon 500 Wagon	Falcon GS Hardtop	Fairmont Sedan	Fairmont Wagon	Fairmont Hardtop	Fairmont GXL
7.75L14 crossply tyres	NA	STD	NA	NA	NA	NA	NA	NA	NA
185SR14 radial ply tyres	STD	NA	NA	NA	NA	NA	NA	NA	NA
ER78S14 steel belt radial ply tyres	OPT	NA	STD	NA	STD	STD	NA	STD	NA
FR78S14 steel belt radial ply tyres	OPT	OPT	OPT	STD	OPT	OPT	STD	OPT	STD
FR70H14 steel belt radial ply tyres	OPT	OPT	OPT	OPT	OPT	OPT	OPT	OPT	OPT

DIMENSIONS	Sedans	Wagons	Hardtops
Overall Length	4865 mm (191.5")	5078 mm (199.9")	4865 mm (191.5")
Overall Width	1900 mm (74.8")	1900 mm (74.8")	1968 mm (77.5")
Overall Height	1384 mm (54.5")	1414 mm (55.7")	1414 mm (55.7")
Wheelbase	2818 mm (111.0")	2946 mm (116.0")	2818 mm (111.0")
Track-front	1539 mm (60.6")	1539 mm (60.6")	1539 mm (60.6")
-rear	1527 mm (60.1")	1527 mm (60.1")	1527 mm (60.1")
Fuel tank capacity	79.5 litres (17.5 gallons)	72.7 litres (16.0 gallons)	79.5 litres (17.5 gallons)
Optional long-range fuel tank capacity	120.5 litres (26.5 gallons)	NA	120.5 litres (26.5 gallons)
Turning circle-normal	12 m (39.4')	12.6 m (41.2')	12 m (39.4')
-with power steering	12.8 m (42.0')	12.9 m (42.4')	12.8 m (42.0')

Codes for charts above:

STD means standard equipment.

OPT means optional at extra cost.

NA means not available on that model.

NCO means no cost option.

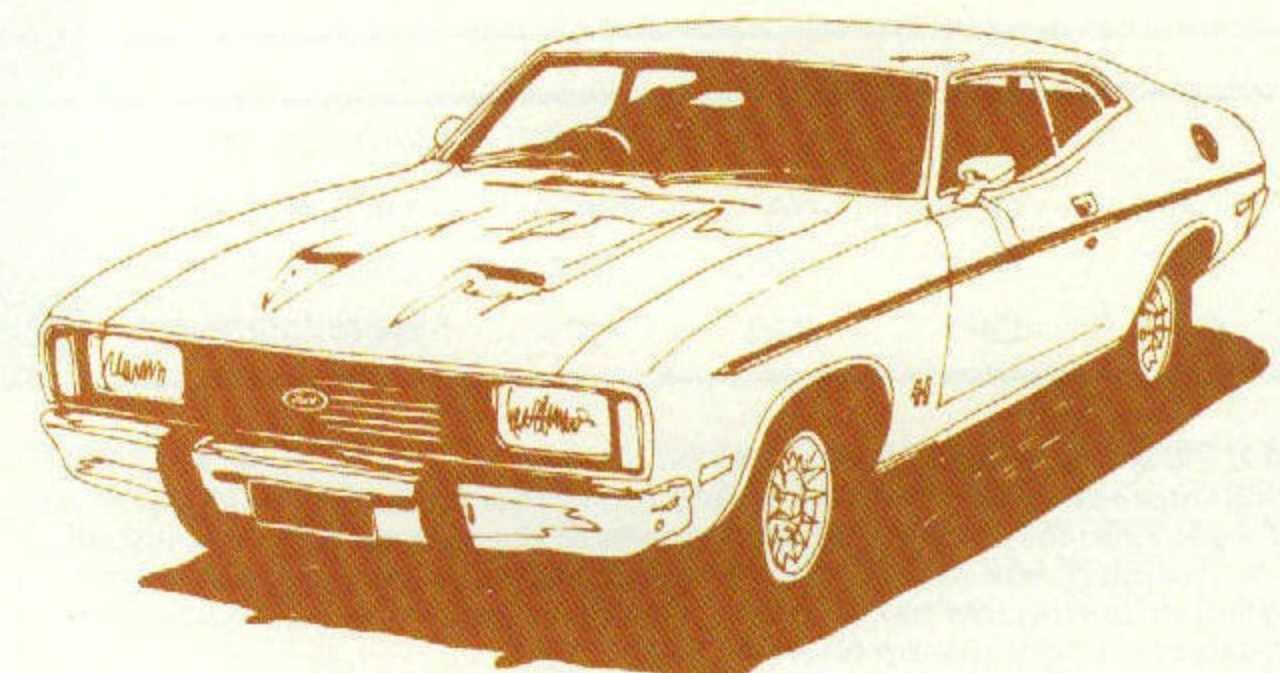
O/R means option at reduced cost.

Servicing and Maintenance:

After the initial 1500 km servicing, your new Ford will only require routine servicing every 10,000 km under normal driving and operating conditions. Ask your authorised Ford Dealer to advise you on service requirements for abnormal driving and operating conditions.

ENGINE SPECIFICATIONS	3.3 litre 6-cylinder	4.1 litre 6-cylinder	4.9 litre 8-cylinder	5.8 litre 8-cylinder
Engine displacement(cc)	3280	4100	4900	5800
Bore(mm)	93.5	93.5	101.6	101.6
Stroke(mm)	79.5	99.3	76.2	88.9
Compression ratio(to 1)	7.9	9.0	9.2	8.9

Please note: All measurements, dimensions and capacities referred to above are approximate only. Always discuss your intended purchase carefully with your Ford Dealer before placing your order.



Illustrated above: Ford Escort Sundowner Van with ski rack accessory (available at extra cost).



Illustrated below: Ford Falcon Sundowner interior with optional AM/FM Multiplex push-button radio and stereo cassette tape player (available at extra cost).

Open up a Falcon Sundowner. The cruisin' Van from Ford.

Ford Falcon Sundowner—a van that's right-on when it comes to a combination of performance, strength, room, handling and versatility.

Best of all though is up back—with the easy 'swing-up/drop-down' lift tail-gate. Inside there's a flat steel-ribbed floor that's over 5 feet (1544 mm) wide and is 7 feet (2133 mm) long to the back of the front seats—covered with a rubber floor mat.

Falcon Sundowner gives you bold, good looks, too. Colourful stripes and Sundowner decals. Bonnet scoops. Blacked-out grille with a set of long-range quartz halogen driving lights. For your comfort up front, there are reclining bucket seats and cut pile carpet. A sporty console with armrest and storage bin. Comprehensive instrumentation includes tachometer, oil and temperature gauges. Then there's the 'soft-feel' sports steering wheel and column stalk-control for turn/lane change signals, high/low beam, headlight flasher and horn button.



FORD FALCON SUNDOWNER STANDARD EQUIPMENT HIGHLIGHTS

As for Falcon 500 Van but with these upgraded features:

- ★ 4.1 litre crossflow 6-cylinder engine
- ★ 4-speed manual floor shift transmission
- ★ ER70H 14 steel belt radial ply tyres
- ★ Comprehensive instrumentation including tachometer, oil and temperature gauges

- ★ Front centre console with armrest and storage bin
 - ★ 'Soft-feel' sports steering wheel
 - ★ Passenger compartment cut pile carpet
 - ★ Slotted steel sports wheels with chrome trim rings
- and with these additional features which are not standard equipment on Falcon 500 Van:

- ★ Long-range quartz halogen driving lights
- ★ Distinctive exterior stripes and 'Sundowner' decals
- ★ Bonnet scoops

and with these Falcon 500 Van features deleted: Bodyside protection mouldings and van side glass



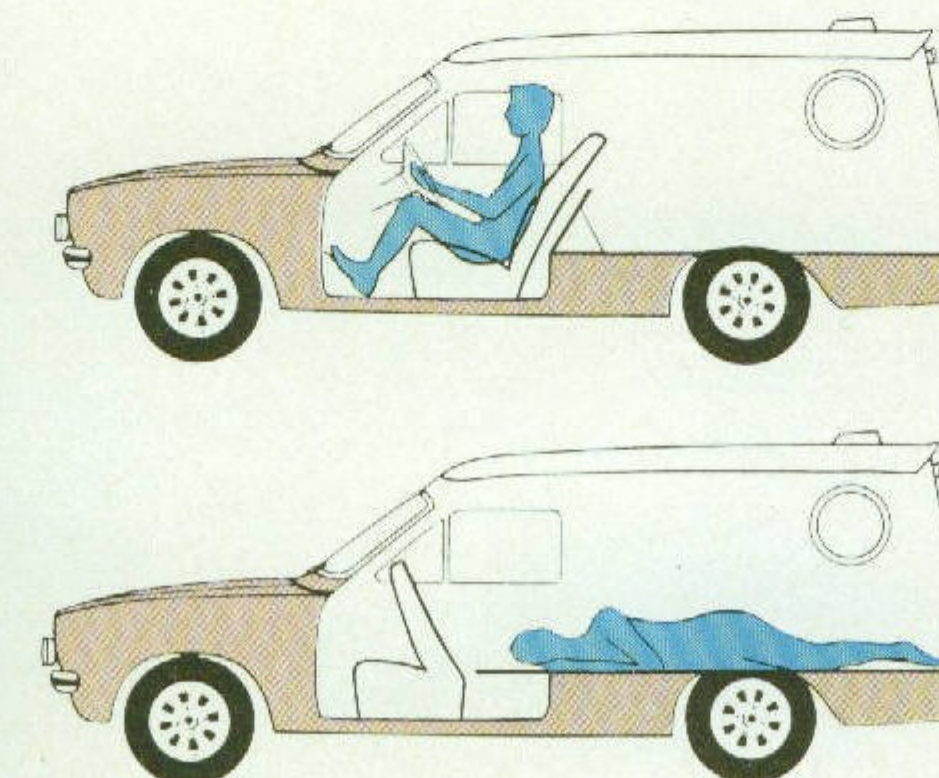
FORD ESCORT SUNDOWNER VAN

The free-wheelin'
Van from Ford.

Run free if you love the great outdoors in Ford Escort Sundowner Van. Escort Sundowner puts it together in a neat size and when you're running free it won't cost a bundle to run. Comes as a 1.6 litre or 2 litre model...but best of all, the front seats tilt forward to give you stretch out room when you're sleeping out. Side panel bubble windows, distinctive striping and 'houndstooth' cloth seat upholstery really make it stand-out.



Illustrated above: Ford Escort Sundowner Van interior.



FORD ESCORT SUNDOWNER VAN STANDARD EQUIPMENT HIGHLIGHTS

Including these features which are standard on Escort GL Van:

- ★ 1.6 litre crossflow 4-cylinder engine
 - ★ 4-speed manual floorshift transmission
 - ★ Power assisted front disc brakes
 - ★ Centre console
 - ★ AM push-button radio
 - ★ Cigarette lighter (illuminated)
 - ★ Outboard inertia reel seat belts
 - ★ Loop pile carpet in passenger compartment
 - ★ Prismatic day/night interior rear-view mirror
 - ★ Styled right and left hand exterior rear-view mirrors
 - ★ Ventilation system with individual directional ball vents and under-dash vents
 - ★ 2-speed heater/demister with illuminated slide controls
 - ★ 2-speed windscreen wipers with 2-jet washers
 - ★ Steering column control stalks for
 - Turn/lane change signals, high/low beam, headlight flasher, horn button and
 - 'Flick-wipe' windscreen wiper/washer.
 - ★ Driver's side trinket tray
 - ★ Front passenger side parcel shelf
 - ★ Hazard flashers
 - ★ Headlining in load area
 - ★ Quartz halogen headlights
- and with these additional features which are not standard on Escort GL Van.

- ★ ZR70S steel belt radial ply tyres
- ★ Styled steel sports-type wheels with chrome trim rings
- ★ Long-range driving lights
- ★ Comprehensive instrumentation including tachometer, fuel and temperature gauges, odometer, speedometer and trip-meter
- ★ Load area fluorescent roof light
- ★ Load area front extension located behind bucket seats
- ★ Front bucket seats with forward folding mechanism
- ★ 'Houndstooth' cloth inserts on front bucket seats and door trims
- ★ 254 mm (10") diameter tinted bubble windows in rear compartment
- ★ Black vinyl cover for spare wheel located in rear load compartment
- ★ Distinctive exterior striping and decal
- ★ Black finish bumperettes with front bumper overrides
- ★ 'Soft-feel' steering wheel
- ★ Black-out paint treatment
- ★ Interior rear door release handle
- ★ Loop pile carpet in load area

FORD FALCON AND FALCON 500 UTILITIES & VANS

Big...strong... comfortable...with performance to match

Falcon and Falcon 500 Utes and Vans are tried and tested workmates with strength, power and reliability ready to take on tough Australian road conditions...and for "getting away from it all".

A 3.3 litre crossflow 6-cylinder engine delivers the necessary power with the economy of standard grade fuel. Power assisted front disc brakes help you stop smooth and sure. There's the strength that comes from torque-box chassis construction, all steel floor, and load-matched suspension for jobs up to 750 kg (15 cwt).

For your comfort, there are deeply cushioned reclining bucket seats in Falcon 500 and full-width bench seats in Falcon—both with folding centre armrests. Fan boosted ventilation. 3-speed heater-demister. And you've got a choice of rear lift tail-gate or side-hinged doors. Lift tail-gate standard on Falcon 500 Van. Side-hinged doors standard on Falcon Van.

FORD FALCON UTILITY AND VAN STANDARD EQUIPMENT HIGHLIGHTS

- ★ 3.3 litre crossflow 6-cylinder engine
- ★ 3-speed manual column shift transmission
- ★ Power assisted front disc brakes
- ★ Prismatic day/night interior rear-view mirror
- ★ Styled left and right hand exterior rear-view mirrors
- ★ High-backed bench seat with folding centre armrest
- ★ Padded door-pull armrests incorporating door handles
- ★ Lockable glove box

- ★ Steering and ignition lock
 - ★ 3-speed heater demister
 - ★ Steering column control stalk for turn/lane change signals, high/low beam, headlight flasher and horn button
 - ★ Roof insulation
 - ★ Side hinged rear doors (van)
- FORD FALCON 500 UTILITY AND VAN STANDARD EQUIPMENT HIGHLIGHTS
- As for Falcon models but with these upgraded features:
- ★ Reclining bucket seats with perforated vinyl upholstery and folding centre armrest

- ★ Quartz halogen headlights
 - ★ Loop pile carpet in passenger compartment
 - ★ Lift tail-gate (van)
- and with these additional features which are not standard on Falcon:
- ★ Interior courtesy light operated by both doors
 - ★ Cigarette lighter
 - ★ Bodyside protection mouldings
 - ★ Floor mat in load area (van)
 - ★ Side glass in load compartment (van)
 - ★ Headlining in load area (van)
 - ★ Tonneau cover (utility)



Illustrated above: Ford Falcon 500 Utility with optional 4.1 litre engine (available at extra cost).

Illustrated above: Ford Falcon 500 Van with optional 4.1 litre engine (available at extra cost).



FORD F100 4-WHEEL DRIVE

From highway to hillside, driveway to dockside - Ford F100 4-Wheel Drive takes Australia in its stride. For the farmer, fisherman, hunter and miner - it's the "big country" machine.

F100 4-Wheel Drive. Try it for size. Brute strength from a V8 engine. 4-Wheel Drive toughness.

It's the rakish, rugged and reliable machine with comfort up front and good load space behind. Discover F100 4-Wheel Drive - the way to explore the big country.

THE XLT OPTION PACK (AVAILABLE AT EXTRA COST) INCLUDES:

- AM push-button radio
- Loop-pile carpet
- 'Houndstooth' cloth seat upholstery
- White vinyl tonneau cover
- White roof
- Front bumper overrides
- Steel spoked wheels
- Rear step bumper
- Lowline "Swinglok" exterior rear-view mirrors
- XLT badges
- Bodyside protection mouldings
- Bright windscreen and rear window surrounds
- Bright drip rails, bodyside mouldings with black vinyl insert, lower bodyside mouldings and tailgate mouldings.

F100 4-WHEEL DRIVE SPECIFICATIONS

Engine: 4.9 litre V8 with 4 Venturi carburettor.

Transmission: 4-speed floorshift with synchromesh on 2nd, 3rd and 4th. SAE Pattern 6 bolt opening on right hand side.

Transmission Ratios (to 1): 6.69; 3.34; 1.66; 1.00; Reverse 8.26.

Clutch: Twin dry plate 241 mm (9.5 in) diameter, diaphragm pressure plate, hydraulic actuation.

Brakes: Dual line, power-assisted hydraulic. 293 mm (11.54 in) front disc brakes and 280 mm x 57 mm (11 in x 2.25 in) rear self-adjusting drum brakes.

Front Suspension: Coil springs with shock absorbers.

Rear Suspension: Leaf springs with shock absorbers and stabilizer bar.

Front Axle: Dana 44-7F full floating ratio-4.09:1 Manual locking-hubs.

Rear Axle: Ford semi-floating ratio-4.1:1.

Wheels: 15 x 6JK, 5 stud standard. 15 x 8 steel spoke 5 stud wheels standard with XLT option pack.

Tyres: 7.00 x 15 x 8 PR, all purpose lug tread pattern standard. 10 x 15 LT all purpose lug tread standard with steel spoke wheels on XLT pack.

Fuel Tank Capacity: 72 litres (16 gallons).

Wheelbase: 2972 mm (117 in) or 3380 mm (133 in).



Illustrated: Ford F100 4-Wheel Drive with XLT option pack (available at extra cost).

Ford Falcon Sundowner, Falcon and Falcon 500 Utilities and Vans

Options and Specifications (Options are at extra cost.)

CONVENIENCE EQUIPMENT	Falcon Van	Falcon 500 Van	Falcon Utility	Falcon 500 Utility	Falcon Sundowner
Integrated air conditioning(a)	OPT	OPT	OPT	OPT	OPT
Power steering(b)	OPT	OPT	OPT	OPT	OPT
AM push-button radio with lock-down aerial	OPT	OPT	OPT	OPT	OPT
AM/FM Multiplex push-button radio with lock-down aerial	OPT	OPT	OPT	OPT	OPT
Stereo cassette tape player	OPT	OPT	OPT	OPT	OPT
"Houndstooth" cloth seat upholstery	NA	OPT	NA	OPT	OPT
Loop pile carpet	OPT	STD	OPT	STD	NA
Cut pile carpet	NA	NA	NA	NA	STD
Bucket seats with pull-down centre armrest	NA	STD	NA	STD	NA
Bucket seats with sports console/armrest	NA	OPT	NA	OPT	STD
Bench seat with folding centre armrest	STD	NCO	STD	NCO	NA
Styled right hand remote control exterior rear-view mirror	OPT	OPT	OPT	OPT	OPT
Bodyside protection mouldings	OPT	STD	OPT	STD	NA
Front bumper overrides	OPT	OPT	OPT	OPT	NA
Rubber floor mat	STD	O/R	STD	O/R	NA
Side hinged rear doors	STD	OPT	NA	NA	NA
Lift tailgate	OPT	STD	NA	NA	STD
Vanside glass	OPT	STD	NA	NA	OPT
Delete van side glass	NA	O/R	NA	NA	STD
Tonneau cover	NA	NA	OPT	STD	NA
Metallic paint(f)	OPT	OPT	OPT	OPT	OPT

SPORTS EQUIPMENT	Falcon Van	Falcon 500 Van	Falcon Utility	Falcon 500 Utility	Falcon Sundowner
GS Rally Pack(g)	OPT	OPT	OPT	OPT	NA
Tinted-band, laminated windscreen	OPT	OPT	OPT	OPT	OPT
Long-range driving lights(h)	OPT	OPT	OPT	OPT	STD
4-wheel power disc brakes(i)	OPT	OPT	OPT	OPT	OPT
Sports alloy road wheels	OPT	OPT	OPT	OPT	OPT
Limited slip differential(j)	OPT	OPT	OPT	OPT	OPT

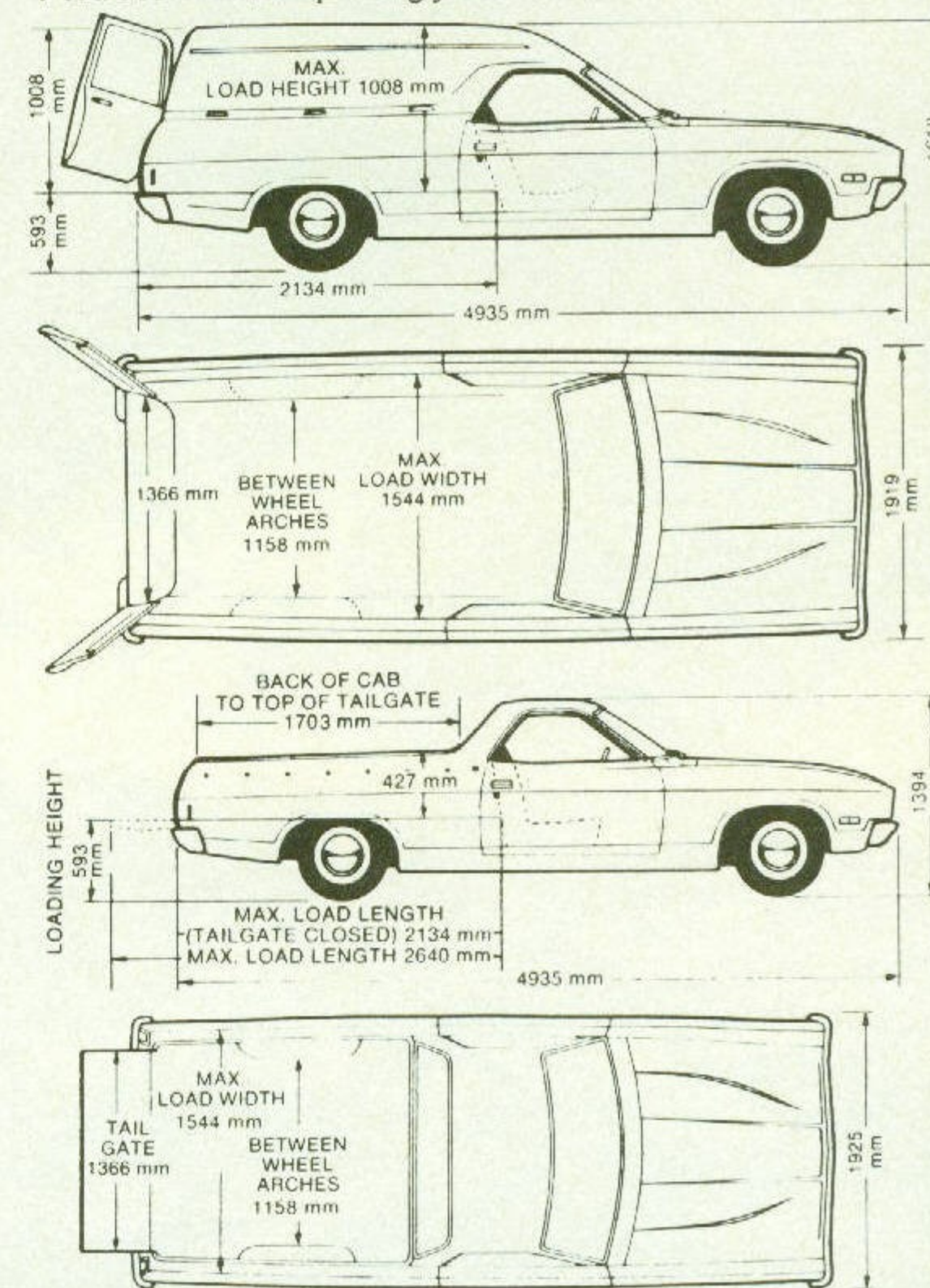
HEAVY DUTY EQUIPMENT	Falcon Van	Falcon 500 Van	Falcon Utility	Falcon 500 Utility	Falcon Sundowner
Outback Pack(k)	OPT	OPT	OPT	OPT	OPT
Class I Towing Pack (refer page 36)	OPT	OPT	OPT	OPT	OPT
Heavy Duty Pack For Towing (refer page 36) (l)(m)	OPT	OPT	OPT	OPT	OPT
Class II Towing Pack (refer page 37)(l)(m)	OPT	OPT	OPT	OPT	OPT
500 kg (10 cwt) "sedan ride" suspension	OPT	OPT	OPT	OPT	STD
750 kg (15 cwt) suspension(l)	STD	STD	STD	STD	OPT

ENGINE AND TRANSMISSION COMBINATIONS	Falcon Van	Falcon 500 Van	Falcon Utility	Falcon 500 Utility	Falcon Sundowner
3.3 litre crossflow 6-cylinder with:					
3-speed manual column shift(b)	STD	STD	STD	STD	NA
3-speed automatic column shift(q)	OPT	OPT	OPT	OPT	NA
4.1 litre crossflow 6-cylinder with:					
3-speed manual column shift(b)	OPT	OPT	OPT	OPT	NA
4-speed manual floor shift(d)	NA	OPT	NA	OPT	STD
3-speed automatic column shift	OPT	OPT	OPT	OPT	NA
3-speed T-bar automatic(d)	NA	OPT	NA	OPT	OPT
4.9 litre 4-barrel V8 with: (a)(n)					
4-speed manual floor shift(d)	NA	OPT	NA	OPT	OPT
3-speed automatic column shift	OPT	OPT	OPT	OPT	NA
3-speed T-bar automatic(d)	NA	OPT	NA	OPT	OPT
GT POWER PACK OPTION					
5.8 litre 4-barrel V8 with: (a)(o)					
4-speed manual floor shift(d)	NA	OPT	NA	OPT	OPT
3-speed automatic column shift	NA	OPT	NA	OPT	NA
3-speed T-bar automatic(d)	NA	OPT	NA	OPT	OPT

TYRE AVAILABILITY	Falcon Van	Falcon 500 Van	Falcon Utility	Falcon 500 Utility	Falcon Sundowner
7.75 L14 crossply tyres	STD	STD	STD	STD	NA
185 SR14 radial ply tyres(p)(q)	OPT	OPT	OPT	OPT	NA
FR78S14 steel belt radial ply tyres(n)	OPT	OPT	OPT	OPT	NA
ER70H14 steel belt radial ply tyres	NA	NA	NA	NA	STD
FR70H14 steel belt radial ply tyres(m)	OPT	OPT	OPT	OPT	OPT

Footnotes to charts on left:

- (a) Power steering is mandatory at extra cost when air conditioning is fitted with V8 engines.
 - (b) Power steering is not available with 3-speed manual column shift transmission.
 - (c) Bucket seats are upholstered in perforated vinyl.
 - (d) Sports console must be fitted with floor-mounted transmissions and is not available with bench seat.
 - (e) Bench seat is upholstered in non-perforated vinyl.
 - (f) Consult the Ford Colour Selector or your Ford Dealer to determine which colours are metallic.
 - (g) GS Rally Pack consists of special black paint treatment, slotted steel road wheels, bonnet scoops, comprehensive instrumentation, front bumper overrides, 'soft-feel' sports steering wheel and long-range driving lights.
 - (h) Long-range driving lights are standard when GS Rally Pack is specified on Falcon 500.
 - (i) 4-wheel power disc brakes are optional at extra cost with 4.9 litre V8 engine and mandatory at extra cost with 5.8 litre V8 engine and limited slip differential.
 - (j) Limited slip differential is not available with 3.3 litre 6-cylinder engine or with 750 kg (15 cwt) suspension and 4.9 litre V8 engine with rear drum brakes. It is mandatory at extra cost with 5.8 litre V8 engine or 4-wheel disc brakes.
 - (k) Outback Pack comprises increased diameter stabiliser bar, engine stone guard and heavy duty air cleaner.
 - (l) 750 kg (15 cwt) suspension is mandatory with Heavy Duty Pack For Towing and Class II Towing Pack Options.
 - (m) FR70 H14 radial ply tyres are mandatory with Heavy Duty Pack For Towing and Class II Towing Pack Options or 5.8 litre V8 engine.
 - (n) FR78S radials are mandatory with 4.9 litre engine.
 - (o) Mandatory equipment, at extra cost, with the 5.8 litre engine: 4-wheel power disc brakes, limited slip differential, FR70 H14 steel belt radial ply tyres.
 - (p) Only available with 6-cylinder engine and 500 kg (10 cwt) suspension option.
 - (q) 185 SR 14 radial ply tyres are not available with the 3.3 litre engine when specified with automatic transmission.
- Engine Specifications:** Refer to page 38 for specifications. Always discuss your intended purchase carefully with your Ford dealer before placing your order.



DIMENSIONS	Utilities and Vans
Wheelbase	2946 mm (116.0")
Track - front	1539 mm (60.6")
- rear	1526 mm (60.1")
Ground clearance	162 mm (6.4")
Max. load length (tailgate down)	2640 mm (103.9")
Max. load length (tailgate closed)	2134 mm (84.0")
Max. loading height (unladen)	593 mm (23.3")
Fuel Tank capacity	67 litres (14.8 gall)
Turning circle	12.5 m (41.2 ft)
Cubic capacity (Vans)	2.7 m ³ (96 ft ³)

Ford Fairlane

Australia's Number One Prestige Car*



*Top selling prestige car according to ADAPS 1977 registration figures. The Ford Fairlane Marquis is illustrated above.

Code for charts above: STD means standard equipment. OPT means optional at extra cost. NA means not available on that model. NCO means no cost option. O/R means option at reduced cost. Please note: All measurements, dimensions and capacities referred to above right are approximate only.



Illustrated above: Ford Fairlane 500 with optional sun roof (available at extra cost).

FORD FAIRLANE 500

Engineered for pleasure and performance.

When a prestige motor car becomes as successful as Ford Fairlane there have to be many reasons why. Today's Fairlane is the sequel to a best seller. Fairlane 500 has the impressive appearance and distinctive styling that helps set it apart from other cars. But looks are only the beginning. The spacious interior has the luxury of integrated air conditioning, 3-speed T-bar automatic transmission and 'soft-feel' steering wheel. Deeply contoured, reclining front bucket seats and soft, cut pile carpet combine to help make long hours on the road pleasant and quiet for you and your passengers.



FORD FAIRLANE 500 STANDARD EQUIPMENT HIGHLIGHTS

- ★ 4.9 litre 4-barrel V8 engine
- ★ 3-speed T-bar automatic transmission
- ★ Touring suspension
- ★ 4-wheel power disc brakes
- ★ ER78 S14 steel belt radial ply tyres
- ★ Limited slip differential
- ★ Quartz halogen headlights
- ★ Integrated air conditioning
- ★ Tinted side and rear glass
- ★ Tinted-band, laminated windscreen
- ★ Reclining front bucket seats with perforated vinyl upholstery
- ★ Front centre console with armrest and storage bin
- ★ Folding centre armrest in rear compartment
- ★ Cut pile carpet
- ★ AM push-button radio with power aerial
- ★ Power steering
- ★ 'Soft-feel' steering wheel
- ★ 3-speed heater/demister with illuminated controls
- ★ Electric rear window demister
- ★ Electric quartz crystal clock
- ★ Steering column control stalk for turn/lane change signals, high/low beam, headlight flasher and dual tone horn button
- ★ Intermittent windscreen wipers with anti-lift vane fitted to driver's side blade
- ★ 4-jet windscreen washers
- ★ Prismatic day/night interior rear-view mirror
- ★ Styled left hand exterior rear-view mirror
- ★ Vanity mirror in passenger side sun visor
- ★ Foot operated parking brake
- ★ Driver's side trinket tray
- ★ Passenger side parcel shelf
- ★ Map reading light
- ★ "Lights on" warning light
- ★ Interior courtesy lights operated by all four doors
- ★ Courtesy lights for glove box and luggage compartment
- ★ Lockable passenger side glove box
- ★ Cigarette lighter built into front centre ashtray
- ★ Outboard inertia reel front and rear seat belts
- ★ Carpeted luggage compartment floor
- ★ Bodyside protection mouldings
- ★ Front and rear bumper overriders
- ★ Vinyl roof
- ★ Styled wheelcovers

FORD FAIRLANE MARQUIS

Power and leather together

Fairlane Marquis' interior beautifully proves a point: it is designed, powered and upholstered for luxury and comfort to take it out of the ordinary.

It begins with individual front seats, each featuring a 6-way power operated adjustment, and each providing contoured support for the body, and thick foam padding in seat squabs and backs to help take the fatigue out of long driving.

Power operated windows are also provided—with a driver's 'lock' control which overrides the individual controls of the passenger windows.

And, to complement the tasteful, yet rich interior decor all seats feature natural leather facings.

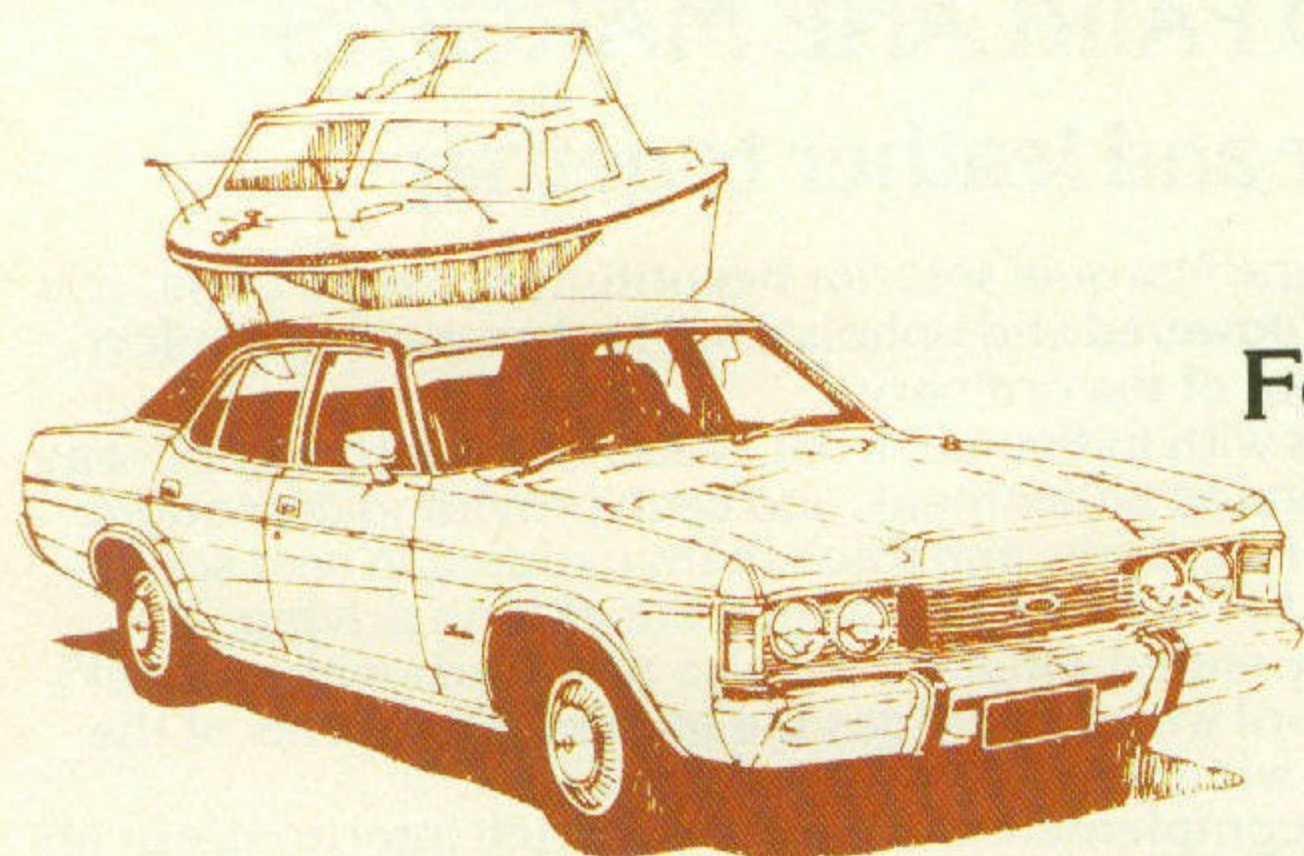
Needless to say, in its power, overall performance, smooth, quiet ride and characteristics, Marquis continues the tradition which has made Fairlane the most preferred prestige car in Australia.

FORD FAIRLANE MARQUIS STANDARD EQUIPMENT HIGHLIGHTS

As for Fairlane 500 but with these upgraded features:

- ★ Front bucket seats with 6-way power adjustment
- ★ Leather seat facings
- ★ Power operated windows
- ★ Chrome finish remote control right and left hand exterior rear-view mirrors
- ★ Twin spot dome lamp





Ford Fairlane 500 and Fairlane Marquis Options and Specifications

(Options are at extra cost)

CONVENIENCE EQUIPMENT	Fairlane 500	Fairlane Marquis
AM/FM Multiplex push-button radio	OPT	OPT
Stereo cassette tape player	OPT	OPT
Sun roof	OPT	OPT
Perforated vinyl seat upholstery	STD	NA
Leather seat facings	NA	STD
Cloth seat upholstery - "Cord"	OPT	NA
- "Crushed velour"	NA	NCO
Long-range fuel tank - 120.5 litres (26.5 gallons)	OPT	OPT

POWER EQUIPMENT	Fairlane 500	Fairlane Marquis
Power operated windows	OPT	STD

HEAVY DUTY EQUIPMENT	Fairlane 500	Fairlane Marquis
Outback Pack (a)	OPT	OPT
Heavy duty suspension (b)	OPT	OPT
Class I Towing Pack (Refer to page 36 for details)	OPT	OPT
Heavy Duty Pack For Towing (Refer page 36)	OPT	OPT
Class II Towing Pack (Refer page 37)	OPT	OPT

APPEARANCE EQUIPMENT	Fairlane 500	Fairlane Marquis
"Regency" paint (Bronze)	NA	OPT

ENGINE AND TRANSMISSION COMBINATIONS	Fairlane 500	Fairlane Marquis
4.9 litre 4-barrel V8 with:		
3-speed automatic column shift	NCO	NA
3-speed T-bar automatic	STD	STD
5.8 litre 4-barrel V8 with:	(c)	
3-speed automatic column shift	OPT	NA
3-speed T-bar automatic	OPT	OPT

TYRE AVAILABILITY	Fairlane 500	Fairlane Marquis
ER78S 14 steel belt radial ply tyres	STD	NA
FR78S 14 steel belt radial tyres - 4 ply	OPT	STD
FR78S 14 steel belt radial tyres - 6 ply (c)	OPT	OPT

Footnotes to above charts:

- (a) Outback Pack consists of heavy duty shock absorbers and springs, increased diameter stabiliser bar, engine stone guard and heavy duty air cleaner.
- (b) Heavy duty suspension is included in Outback Pack, Heavy Duty Pack For Towing and Class II Towing Pack options.
- (c) FR78S 14 6 ply radial tyres are mandatory at extra cost when the 5.8 litre V8 engine is specified and when Heavy Duty Pack For Towing or Class II Towing Pack is specified.

Codes for above charts:

STD means standard equipment.
OPT means optional at extra cost.
NA means not available for this model.
NCO means no cost option.

Always discuss your intended purchase carefully with your Ford Dealer before placing your order.

DIMENSIONS	
Overall length	5179mm (203.9")
Overall width	1960mm (77.2")
Overall height	1387mm (54.6")
Wheelbase	2946mm (116.0")
Track - front	1539mm (60.6")
- rear	1527mm (60.1")
Fuel tank capacity	79.5 litres (17.5 gallons)
Optional long-range fuel tank capacity	120.5 litres (26.5 gallons)
Turning circle	12.9m (42.4')

ENGINE SPECIFICATIONS	4.9 litre 4 barrel V8	5.8 litre 4 barrel V8
Engine displacement (cc)	4900	5800
Bore (mm)	101.6	101.6
Stroke (mm)	76.2	88.9
Compression ratio (to 1)	9.2	8.9

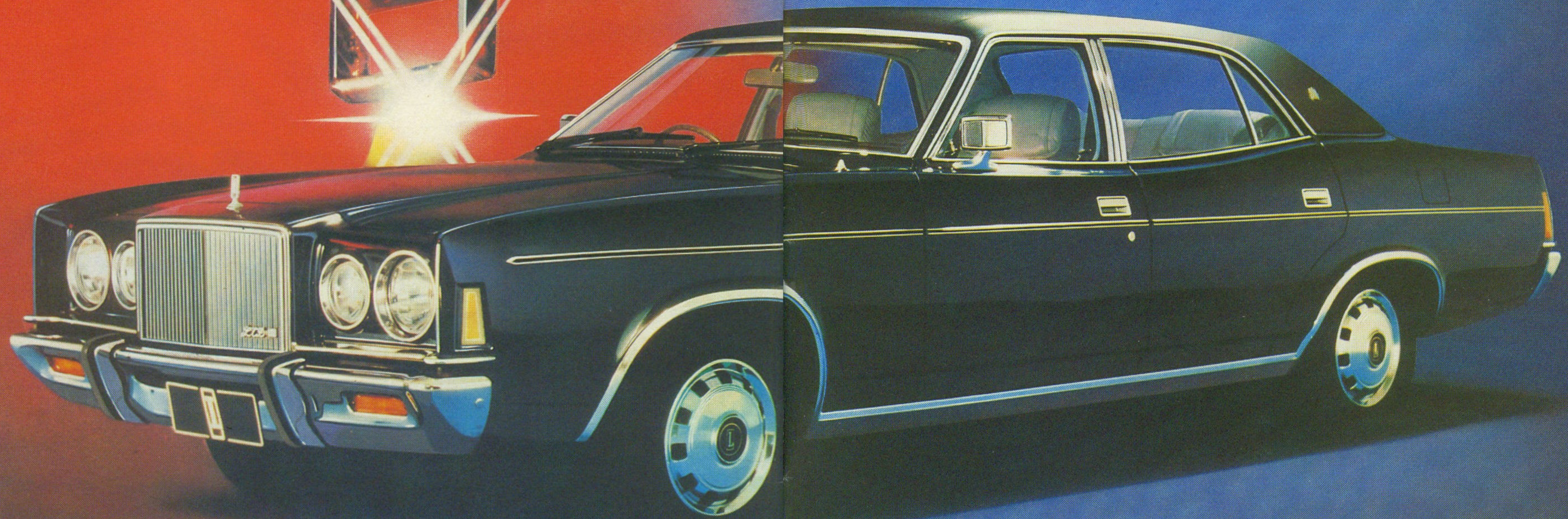
Please note: All measurements, dimensions and capacities referred to above are approximate only.

Driver and passenger protection:

The following items are built-in to both Fairlane models to lessen the likelihood of an accident occurring and to help prevent personal injury in the event of an accident:
 ★ 4-wheel power disc brakes ★ Dual hydraulic brake system and warning light ★ Front and rear outboard inertia reel seat belts ★ Highbacked front seats
 ★ Recessed, padded instrument panel ★ Steering column designed to collapse at a predetermined load under impact conditions ★ Impact absorbing steering wheel
 ★ Controlled collapsible front end ★ Padded sun visors ★ Padded door pull armrests ★ Door mounted grab handles ★ Tinted-band, laminated windscreen and safety glass in all other windows ★ Windscreen mounted, breakaway, anti-glare interior rear-view mirror ★ Exterior rear-view mirrors ★ Electric rear window demister
 ★ Quartz halogen headlights ★ Reversing lights ★ Front and rear side marker lamps ★ Wrap around front turn indicators ★ 2-speed electric windscreen wipers with intermittent wipe action and push-button washer control
 ★ Non-reflective wiper blades with anti-lift vane fitted to driver's side blade ★ Dual tone horn ★ Steering column stalk control for hi-lo beam, headlight flasher, turn and lane change indicators ★ Side impact/intrusion bars.

Ford LTD...Australia's luxury limousine.





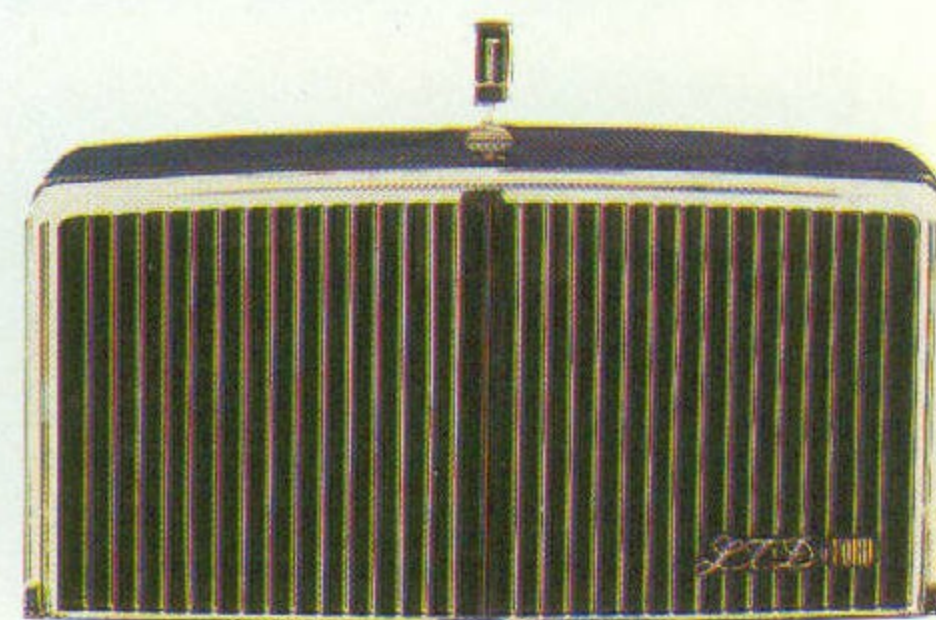
FORD LTD
Australia's Luxury Limousine

Ford LTD...the largest and most spacious prestige motor car presently built in Australia. Its distinctive styling is bold, clean and impressive. Its smooth, hushed ride, authoritative performance and ease of handling for a car of its size, provide you with a high degree of motoring pleasure.

The sort of features you'd naturally expect in a car like this include: contoured front bucket seats with

individual 6-way power adjustment and leather seat facings; integrated air conditioning; power operated windows; stereo cassette tape player and 4-wheel power disc brakes.

Take the wheel and experience for yourself the responsiveness of a 5.8 litre V8 engine with 3-speed T-bar automatic transmission. Turn the key of LTD and leave the world of ordinary motoring behind.







FORD LTD

Silver Monarch Edition

The LTD limousine includes an extensive range of luxury features as standard equipment.

Nevertheless, the Silver Monarch Edition offers a group of features that add considerable distinction to this already fine limousine.

For example, the "Silver Monarch" Grey exterior final paint coat is applied not once, but twice, to provide a superb finish. And, the "Silver Monarch" Grey vinyl roof adds a subtle look of refinement.

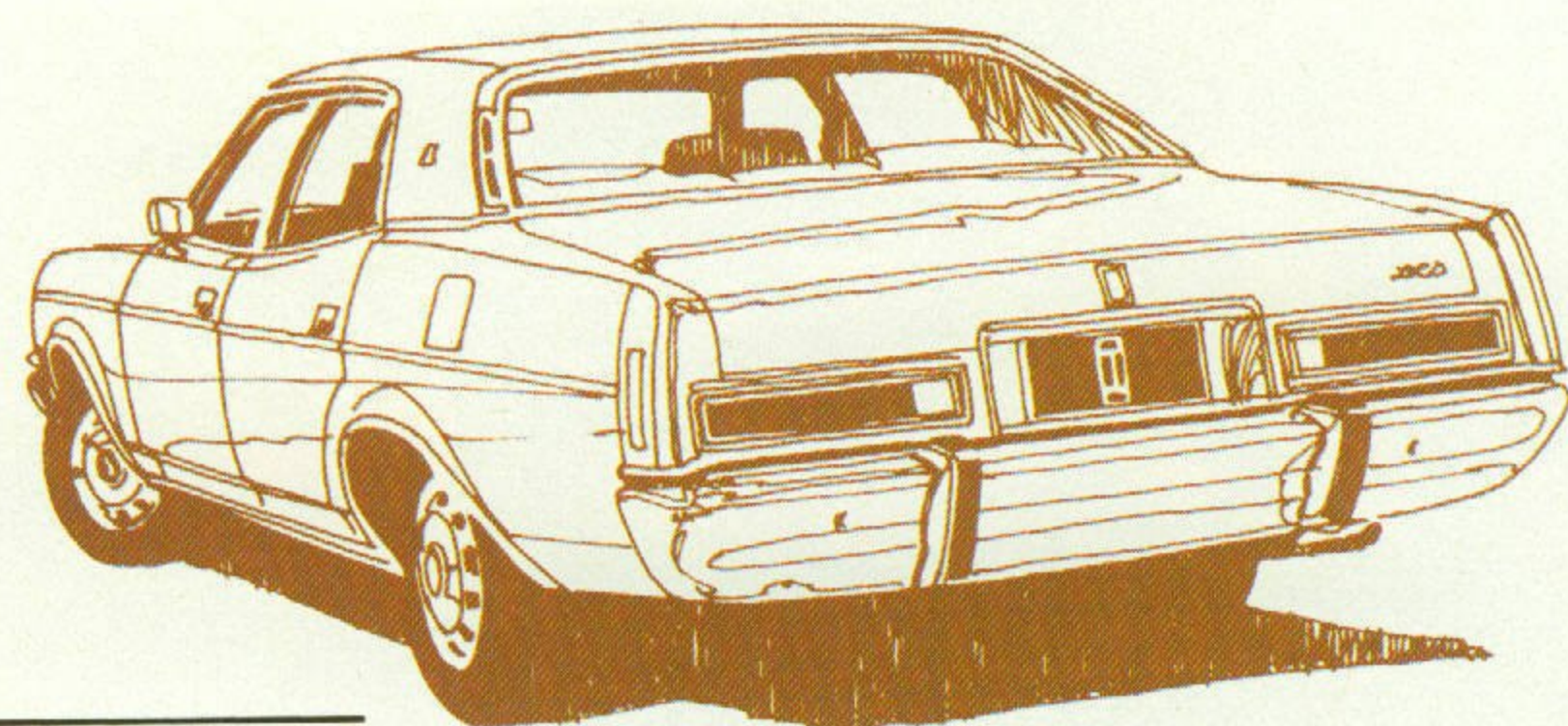
The seats are upholstered in "Cranberry Red" crushed velour cloth and the carpet and door trim is colour-keyed.

Before you order your LTD, ask your Ford Dealer to show you cloth and paint samples for the Silver Monarch Edition. The Ford LTD Silver Monarch is available at a nominal extra charge.



Ford LTD Options and Specifications

(Options are at extra cost)



CONVENIENCE EQUIPMENT	Ford LTD
AM/FM Multiplex push-button radio	OPT
"Velour" cloth seat upholstery	NCO
Long-range fuel tank - 118 litres (26 gallons)	OPT

HEAVY DUTY EQUIPMENT	Ford LTD
Touring suspension	OPT
Class I Towing Pack (Refer page 36 for details)	OPT
Heavy Duty Pack For Towing (Refer page 36 for details)	OPT
Class II Towing Pack (Refer page 37 for details)	OPT

ENGINE AND TRANSMISSION	Ford LTD
5.8 litre 4-barrel carburettor V8 engine coupled with 3-speed T-bar automatic	STD

TYRE AVAILABILITY	Ford LTD
FR78S 14 steel belt radial ply tyres - 6 ply rating	STD

DIMENSIONS	
Overall length	5366mm (211.3")
Overall width	1960mm (77.2")
Overall height	1393mm (54.9")
Wheelbase	3073mm (121.0")
Track - front	1539mm (60.6")
Track - rear	1527mm (60.1")
Fuel tank capacity	79.5 litres (17.5 gallons)
Optional long-range fuel tank capacity	118 litres (26 gallons)
Turning circle	13.04m (42.8')

ENGINE SPECIFICATIONS	
5.8 litre 4 barrel V8	
Engine displacement (cc)	5800
Bore (mm)	101.6
Stroke (mm)	88.9
Compression ratio (to 1)	8.9

Please note: All measurements, dimensions and capacities referred to above are approximate only.

Driver and passenger protection:

The following items are built-in to Ford LTD to lessen the likelihood of an accident occurring and to help prevent personal injury in the event of an accident:

- ★ 4-wheel power disc brakes
- ★ Dual hydraulic brake system and warning light
- ★ Front and rear outboard inertia reel seat belts
- ★ Highbacked front seats
- ★ Recessed, padded instrument panel
- ★ Steering column designed to collapse at a predetermined load under impact conditions
- ★ Impact absorbing steering wheel
- ★ Controlled collapsible front end
- ★ Padded sun visors
- ★ Padded door pull armrests
- ★ Door mounted grab handles
- ★ Laminated windscreen and safety glass in all other windows
- ★ Windscreen mounted, breakaway, anti-glare interior rear-view mirror
- ★ Exterior rear-view mirrors
- ★ Electric rear window demister
- ★ Quartz halogen headlights
- ★ Reversing lights
- ★ Front and rear side marker lamps
- ★ 2-speed electric windscreen wipers with intermittent wipe action and push-button washer control
- ★ Non-reflective wiper blades with anti-lift vane fitted to driver's side blade
- ★ Dual tone horn
- ★ Steering column stalk control for hi-lo beam, headlight flasher, turn and lane change indicators
- ★ Side impact/intrusion bars.

Servicing and Maintenance:

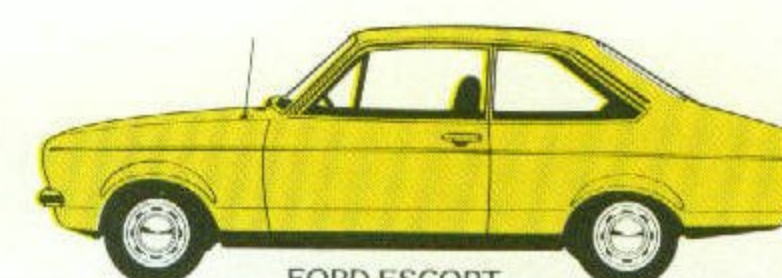
After the initial 1500 km servicing, your new Ford LTD will only require routine servicing every 10,000 km under normal driving and operating conditions. Ask your authorised Ford Dealer to advise you on service requirements for abnormal driving and operating conditions.



Always discuss your intended purchase carefully with your Ford Dealer before placing your order.



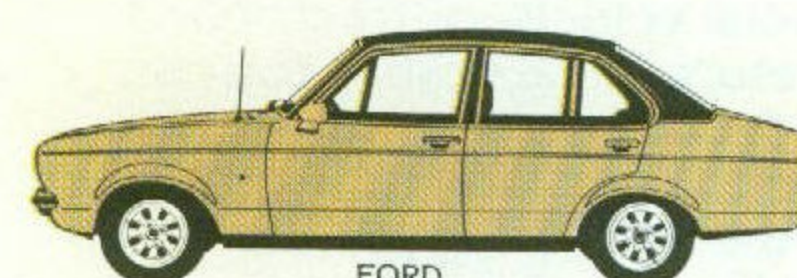
FORD ESCORT 2 DOOR L SEDAN



FORD ESCORT 2 DOOR GL SEDAN



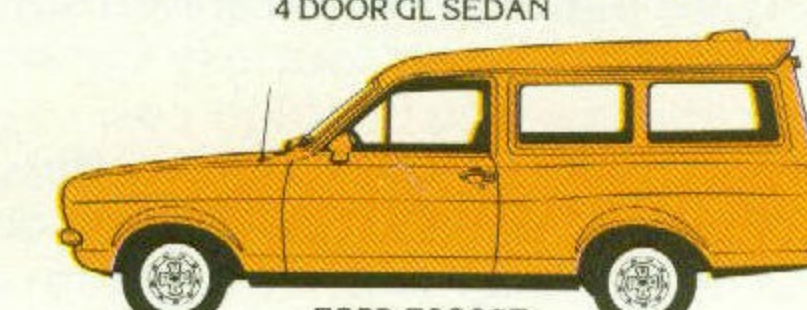
FORD ESCORT 4 DOOR GL SEDAN



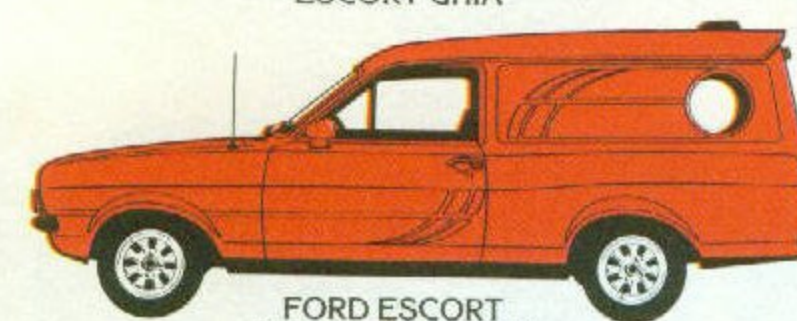
FORD ESCORT GHIA



FORD ESCORT L VAN

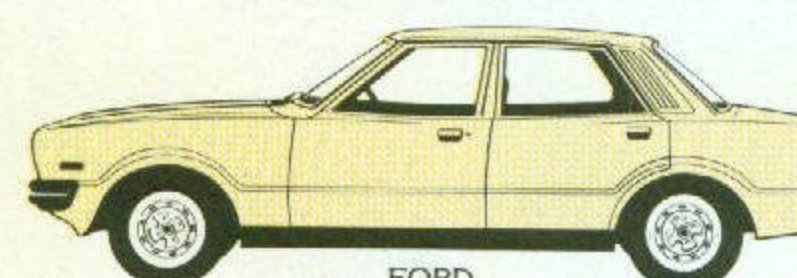


FORD ESCORT GL VAN

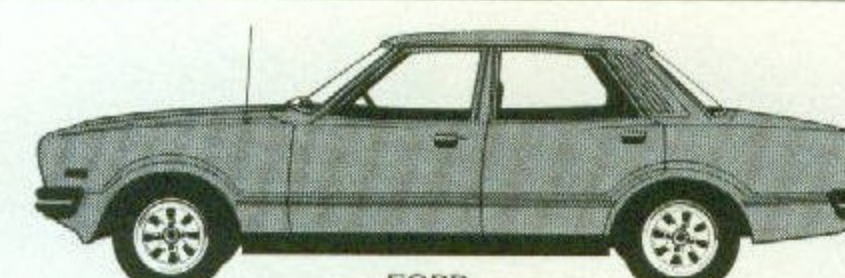


FORD ESCORT SUNDOWNER VAN

FORD ESCORT



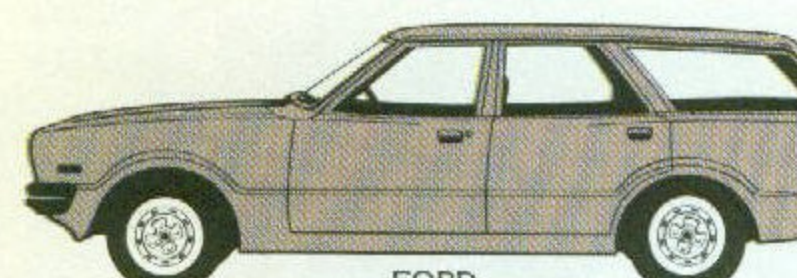
FORD CORTINA L SEDAN



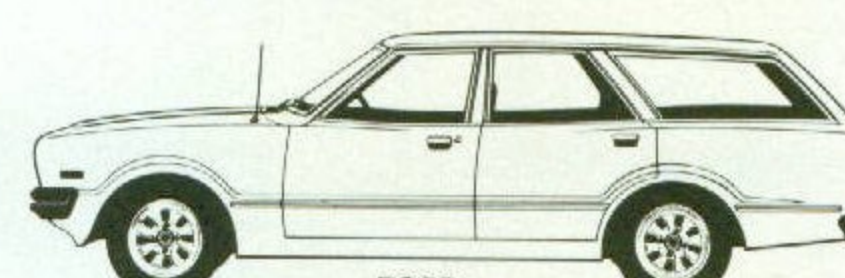
FORD CORTINA GL SEDAN



FORD CORTINA GHIA SEDAN

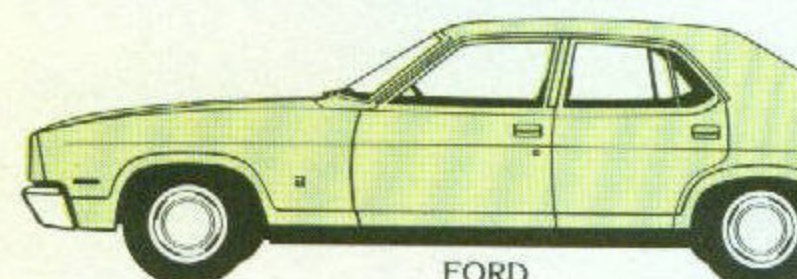


FORD CORTINA L WAGON

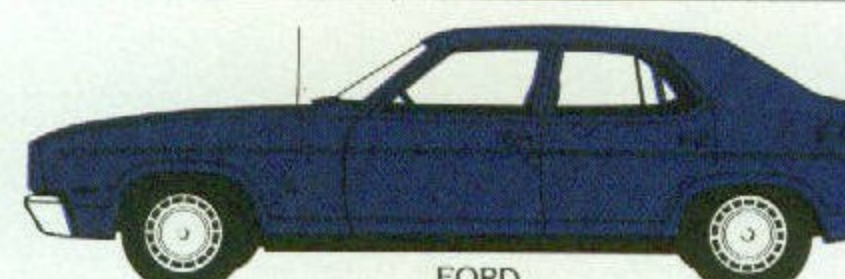


FORD CORTINA GL WAGON

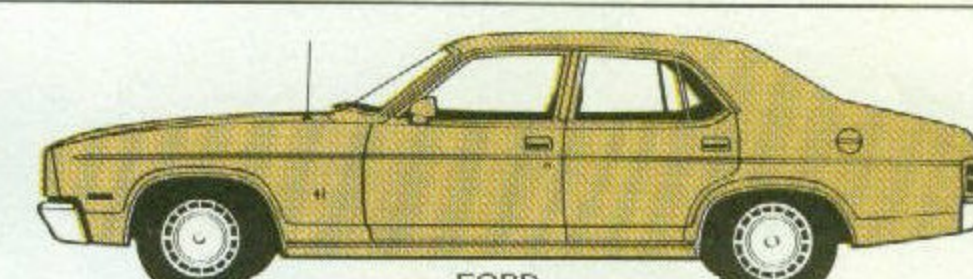
FORD CORTINA



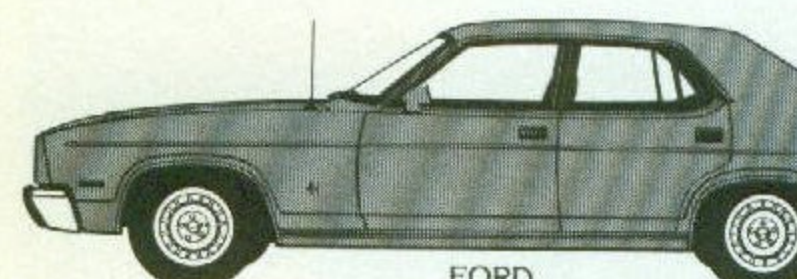
FORD FALCON SEDAN



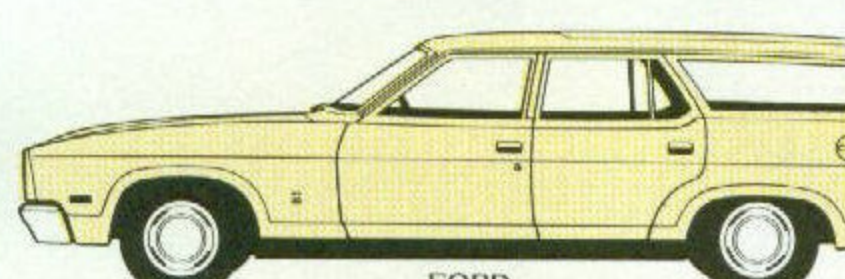
FORD FALCON 500 SEDAN



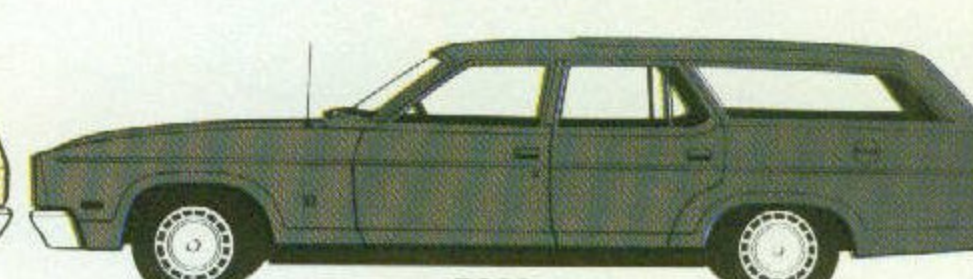
FORD FAIRMONT SEDAN



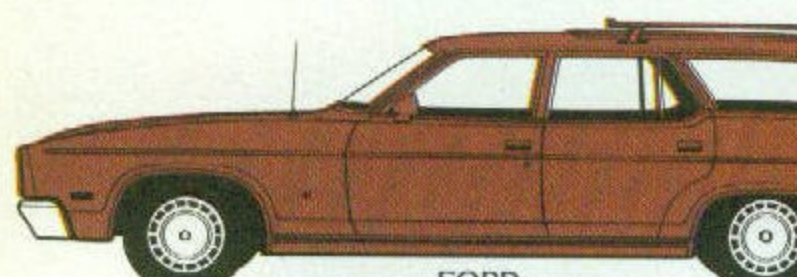
FORD FAIRMONT GXL SEDAN



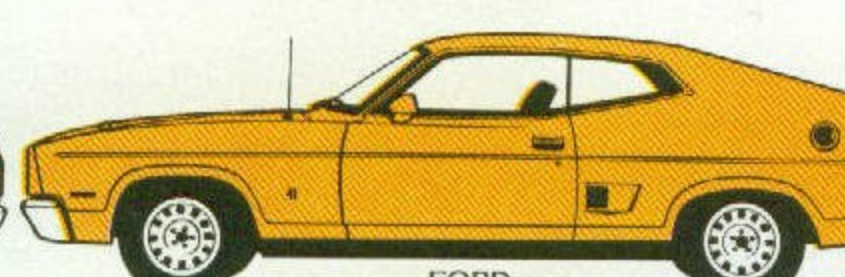
FORD FALCON WAGON



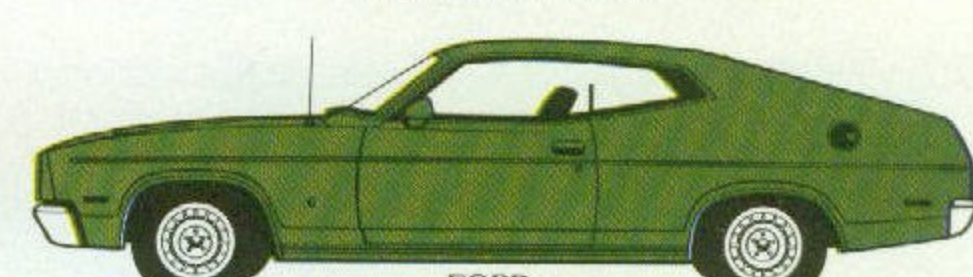
FORD FALCON 500 WAGON



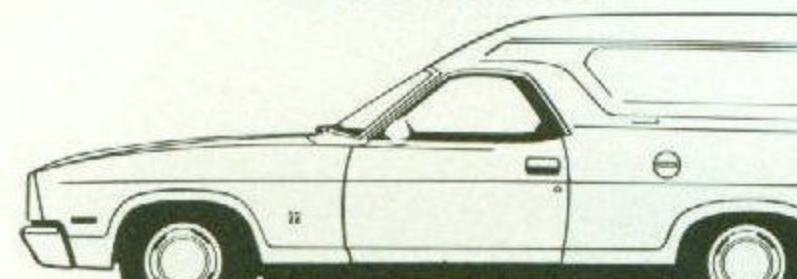
FORD FAIRMONT WAGON



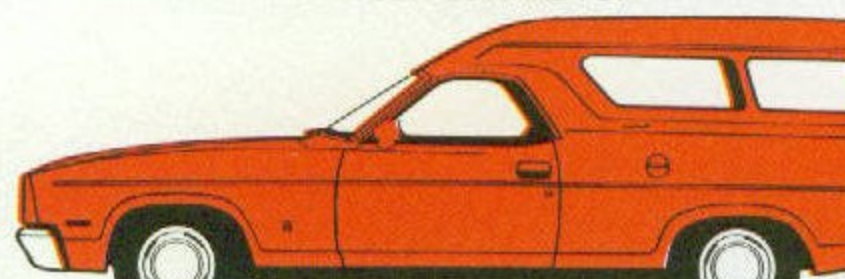
FORD FALCON GS HARDTOP



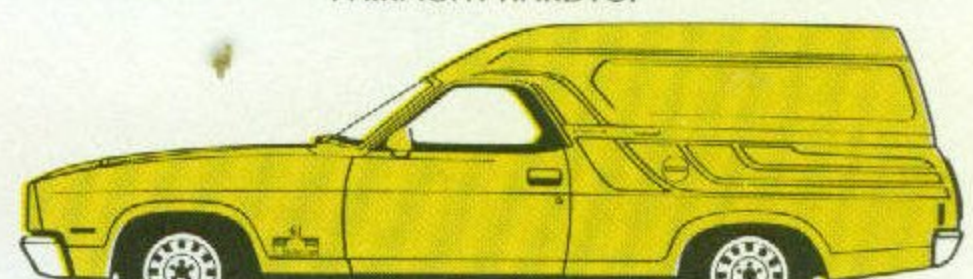
FORD FAIRMONT HARDTOP



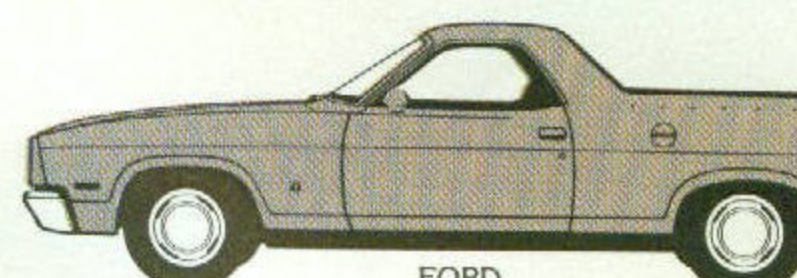
FORD FALCON VAN



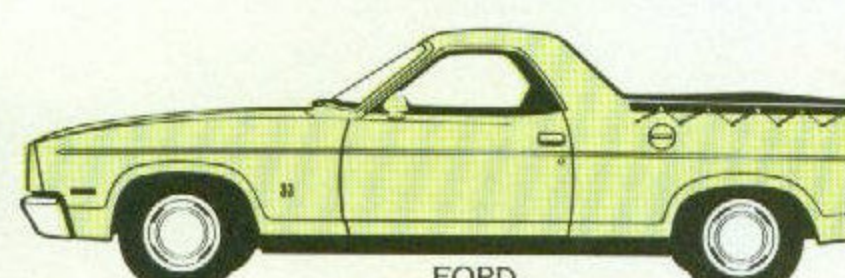
FORD FALCON 500 VAN



FORD FALCON SUNDOWNER VAN

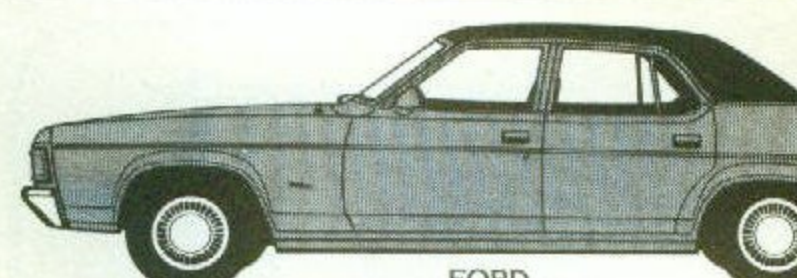


FORD FALCON UTILITY



FORD FALCON 500 UTILITY

FORD FALCON

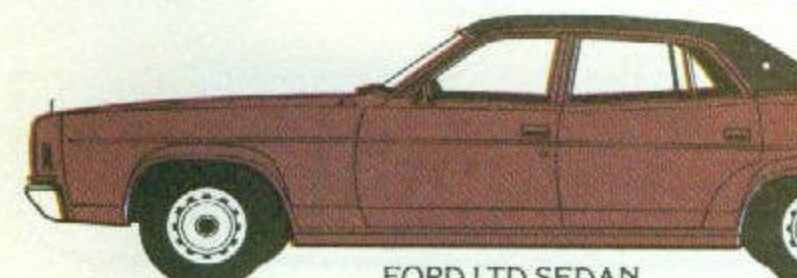


FORD FAIRLANE 500 SEDAN

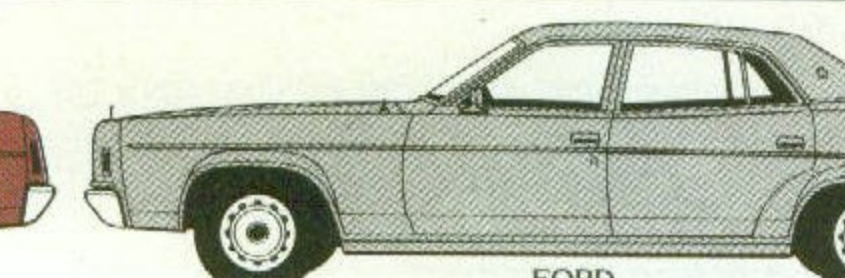


FORD FAIRLANE MARQUIS SEDAN

FORD FAIRLANE



FORD LTD SEDAN



FORD LTD SEDAN "SILVER MONARCH"

FORD LTD

TRAVELLING TO BRITAIN OR THE CONTINENT?

If you are planning an extended stay in Europe, then consider the Ford Courtesy Car scheme. It's an economical answer to the high cost of getting around Europe and the U.K. The scheme offers you the choice of a new Ford Escort, Cortina or Capri for anything up to a year with a minimum charge period of three months. To take advantage of this special service to Ford customers, you must place a firm

order with your Ford dealer in Australia for a new Ford passenger or commercial vehicle, or tractor and take delivery of it on your return to Australia. You can also take advantage of this service if you've taken delivery of a new Ford vehicle within the last six months. For full details on the Ford Courtesy Car Scheme, contact your local Ford dealer, or in case of difficulty 'phone us on Melbourne 359 8061.



The illustrations, information and specifications presented and referred to herein were correct at the time this publication was approved for printing. However, Ford Motor Company of Australia Limited and/or Ford Sales Company of Australia Limited reserve(s) the right, subject to the laws of Australia and/or any applicable State or Territory thereof and/or the regulations of any competent authority which may apply from time to time, at their or its discretion, and without notice, to discontinue or change the specification or design of the products referred to herein and any options therefor at any time without incurring any liability whatsoever to any purchaser thereof. Some of the items illustrated or referred to herein are optional at extra cost. Some options may be required in combination with other options. Always consult your Ford Dealer for the latest information on models, specifications, features, prices, options and availability.

FORD MOTOR COMPANY OF AUSTRALIA LIMITED
FORD SALES COMPANY OF AUSTRALIA LIMITED
1735 Sydney Road, Campbellfield, Victoria

