

# What a surprise!



**Ford Meteor.**





# The Ford Meteor

It's not too big and it's not too small.



There is a far more practical approach to choosing a new car today than there was a few years ago.

Everyone now expects, in fact demands, more from a car. That goes particularly for what's inside - the space and comfort it provides for the occupants.

So car manufacturers the world over have been in search of designs which provide small car economy and manoeuvrability combined with the spaciousness and performance associated with bigger cars.

The Ford Meteor achieves this objective to a degree that may come as a surprise to many people.

#### Surprising Space Efficiency

Almost everything about the Meteor has been designed with this principle in mind. The engine, suspension, seating configuration, boot, and the styling all contribute to this.

The car's shape, for example, is designed with a high priority on aerodynamics. Not only does the modern shape with low

bonnet and sleek lines assist the engine by cutting through the air more easily, but the engine itself is highly efficient, providing excellent fuel economy.

#### Surprising Economy

The following fuel economy data is based upon AS2077 - 1979 tests.

1.5 litre 5-speed manual



1.5 litre 4-speed manual	CITY CYCLE	8.0l/100km	35.3mpg
	HIGHWAY CYCLE	6.0l/100km	47.1mpg
1.5 litre 3-speed automatic	CITY CYCLE	9.0l/100km	31.4mpg
	HIGHWAY CYCLE	7.0l/100km	40.3mpg
1.5 litre Twin Carb 5-speed manual	CITY CYCLE	8.0l/100km	35.3mpg
	HIGHWAY CYCLE	5.5l/100km	51.4mpg

These figures are provided to assist you in comparing the fuel consumption of Meteor with other vehicles. The actual fuel consumption you achieve will depend, however, on many factors, including your driving habits, the prevailing conditions and your vehicle's equipment, condition and use.

#### Surprising Performance

Using an engine that incorporates an alloy head, multispherical combustion chambers, an overhead camshaft

and a 1.5 litre capacity within its compact exterior the Meteor is exciting to drive.

It's a highly efficient engine with a big heart. The modern engine technology built into it has seen to that. The result is an excellent power-to-weight ratio which enables the car to achieve sparkling performance.

The other aspects that add to the Meteor being so enjoyable to drive in city traffic and on the highway are its fully independent suspension, precise rack and pinion steering, disc/drum braking system, front wheel drive and excellent visibility.

In city traffic particularly, the Meteor is rewarding, because it is responsive and compact. Just right for manoeuvring and parking.

The outer dimensions contribute substantially to this driving ease but they don't begin to prepare you for what awaits you inside.

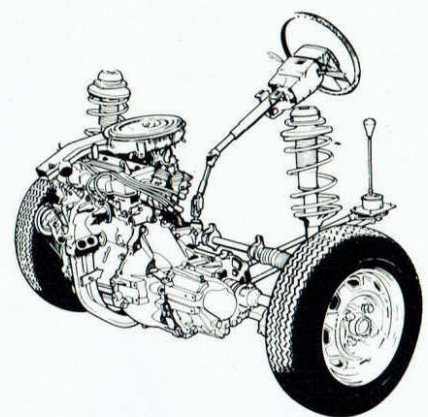
Illustrated on the front and rear cover and above is the Meteor Ghia with rear mudflaps which are available as an accessory at extra cost from your Authorised Ford Dealer.



# So much space



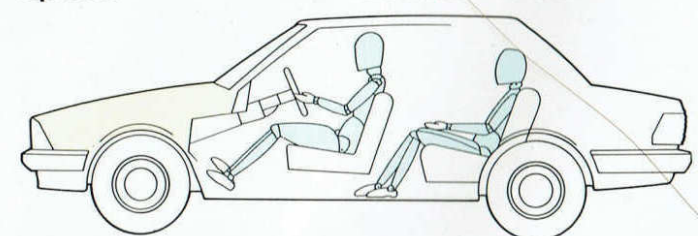
Words and pictures can't do justice to all the space you will find when you actually sit inside a Ford Meteor. The designers have made excellent use of a number of modern techniques which not only make for more passenger space and comfort, but make that space more usable. That's what modern cars are all about - space efficiency.



To begin with, being a front wheel drive, the major mechanicals are mounted sideways or transversely, and incorporate engine, clutch, transmission and final drive. This compact unit fits neatly across the engine compartment, leaving space for easy access without taking up a great deal of the car. That leaves more car for you. The occupants. The interior is certainly the big surprise. Your eyes won't have misled you, and a tape measure will confirm your initial impression of size.

## INTERIOR DIMENSIONS

FRONT		
Headroom	963mm	37.91"
Legroom	1054mm	41.50"
Shoulder-room	1320mm	51.97"
Hiproom	1321mm	51.97"
REAR		
Headroom	940mm	37.00"
Legroom	876mm	34.49"
Shoulder-room	1320mm	51.97"
Hiproom	1200mm	47.17"



Left. In a rear wheel drive car, passenger space is taken up by the driveshaft tunnel. Right. Front wheel drive provides more space and comfort for rear seat passengers. These figures are comparable with many of today's medium sized cars. Cars which, when you view them from the outside look bigger, but when you are seated inside will only offer similar space.

**1 Transverse mounted engine.** The compact engine, clutch and transmission assembly is mounted sideways to take up less space, while still allowing easy access for servicing.

**2 Front wheel drive.** This feature contributes to Meteor's space efficiency by eliminating the need for a bulky drive shaft and rear differential. This configuration also gives positive traction combined with excellent handling and its light weight contributes to Meteor's excellent fuel economy.

**3 Negative scrub geometry.** With this feature the front suspension produces a self-correcting force which helps restrain the car from steering off course when one front wheel encounters soft sand, or in the event of a sudden drop in tyre pressure.

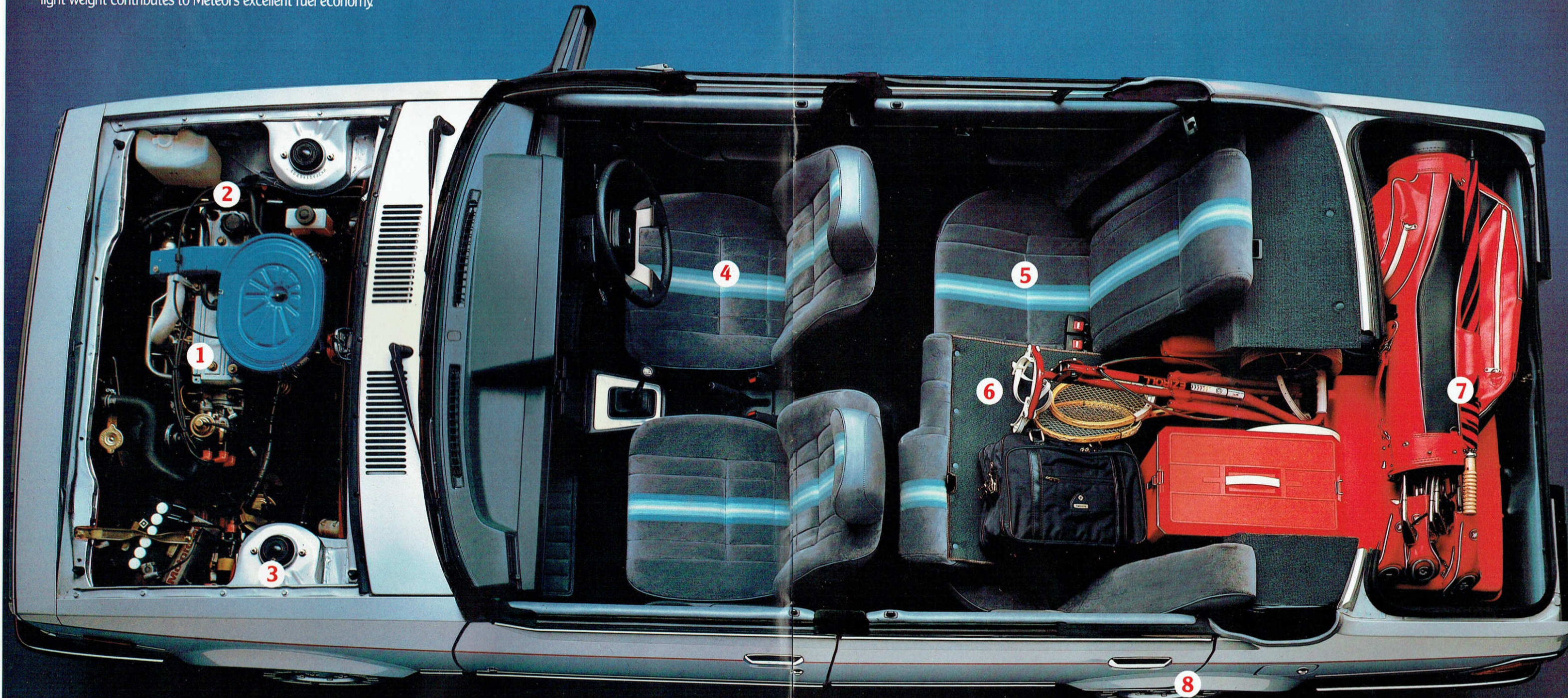
**4 Front seats.** For comfort and driving enjoyment the front seat backrests can be reclined and the driver's seat cushion angle can be adjusted.

**5 Rear seating.** Meteor provides adult size rear legroom and headroom along with excellent seating quality.

**6 Backrests.** The rear seat backrest is split in a 60:40 ratio, allowing each side to be folded down individually. This extends the bootspace, allowing long thin items or wider packages to fit inside while still keeping a seat available in the back.

**7 Bootspace.** This is another surprise. With 12.9 cubic feet of luggage space and several small stowage areas Meteor has a very spacious boot. The spare wheel can also be stowed upright or flat on the bottom of the boot.

**8 Fully independent suspension.** This provides a self confidence in the car that comes from its excellent roadholding and smooth ride. The long suspension travel helps on rough roads.



# What a surprise!

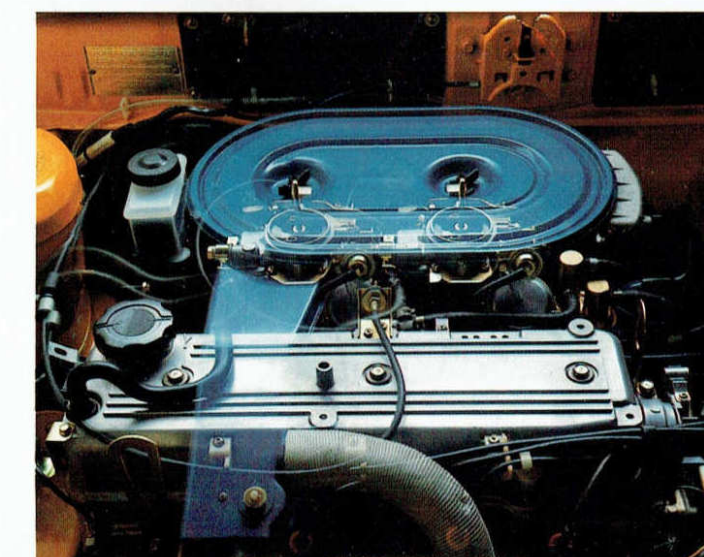
# for a car this size.



The Ford Meteor is not only spacious in the front and rear seats, but it's versatile. Lift a knob and the rear seat backrests fold down. In this way the boot, which is big in the first place, can be extended.

The backrest is split in such a way that the one side is wider than the other. So space can be created for long, thin objects or wider items. And while using one side only, seating space is available for a third occupant.

## TWIN CARBURETTOR, HIGH PERFORMANCE ENGINE OPTION.



The driver who wants a higher level of performance from a Meteor can specify the Twin Carb engine option. The 1.5 litre engine has been engineered to produce a very healthy 58.8kW (78.9hp) of power. The major differences over the standard engine are:

- Two Hitachi twin venturi downdraft carburetors
- High capacity air cleaner assembly
- High lift camshaft
- High compression pistons
- Heavy duty connecting rods
- Heavy duty main bearings
- Double valve springs

When this Twin Carb engine is ordered with the GL model a 5-speed manual transmission, comprehensive instrumentation and 70 Series radial ply tyres are also fitted. The 70 Series tyres are fitted to the Ghia model when ordered with the Twin Carb engine. You will enjoy the exciting performance of Meteor with the Twin Carb engine.



# Meteor Ghia

The badge is a clue to what awaits you.



The Ghia name says so much about the car before you've even started looking at all of its features.

It's a name that's become associated with excellent appointments and elegant looks.

Viewed from a distance the Meteor Ghia has a bright and distinguished appearance. This is because of its modern styling, subtle pinstriping and a broad bodyside moulding that runs down each side of the car.

The Ghia badge, however, is more an identification of what awaits you inside.

That's the surprise. Elegant velour cloth and soft pile carpeting complement the spaciousness by adding an air of opulence. There's a feeling of rightness and tastefulness about it.

And when it comes to driving the Meteor Ghia, so many details are even provided to make it a rewarding experience.

Front and rear seat backrests, the driver's seat cushion angle and the steering wheel height are adjustable.

Left and right hand exterior rear view mirrors are adjustable by interior remote controls.

The boot can be opened by raising a lever conveniently located alongside the driver's seat.

An AM/FM radio and stereo cassette player produces excellent sound for your listening pleasure.

And the 1.5 litre engine coupled with a 5-speed manual transmission provides the Ghia with a lively character.

This Meteor can tick off the kilometres with quiet assurance. And that, in itself, is a great luxury.

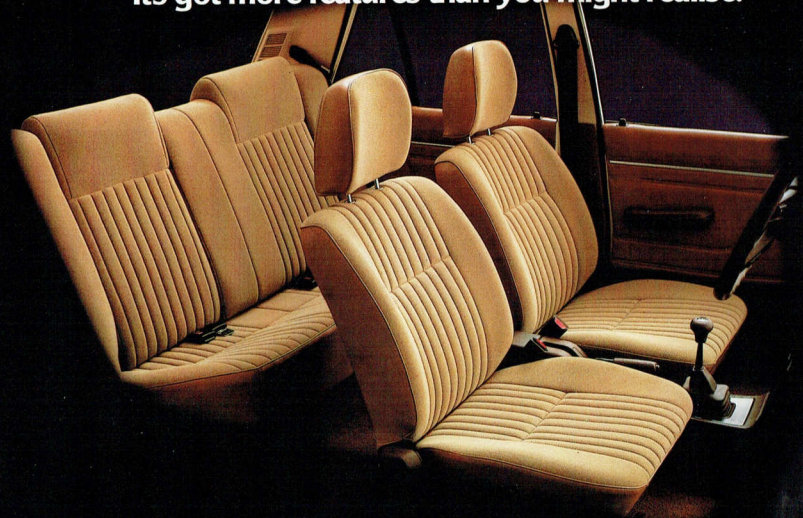


Rear mudflaps illustrated are dealer fitted accessories available at extra cost.



# Meteor GL

Surprise, surprise.  
It's got more features than you might realise.



Whether you take GL to stand for generous legroom, general luxuriousness, or great looks, the Meteor has a lot of appeal. It's a car with a lot more features than you might expect of a GL model.

It's a joy to sit inside. Stretch out and enjoy the soft, well shaped seats. Cloth seat facings, soft head restraints, fold down split rear seat backrests and an efficient flow-through ventilation system with heater add to

the comfort.

To make driving a pleasure the Meteor GL is equipped with a 1.5 litre engine, 4-speed manual transmission and steel belt radial ply tyres. The car's rack-and-pinion steering, fully independent suspension and disc/drum braking system account for its responsive nature.

Whichever way you look at it, the Meteor GL comes as a very pleasant surprise.



# 'S' Pack

If you're after a car with sporty looks, the 'S' Pack is tailor made for you.



Add some extra flair and finesse to your Meteor GL by ordering it with the 'S' Pack option.

Its distinctive body striping, blackout treatment, fog lamps, alloy wheels with gold finish and ZR70 Series steel belt radials transform the sleekly shaped Meteor into a sporty saloon.

The interior is equally individualistic. Into the ample

space go colour co-ordinated cloth seat facings and door panel sections, to produce a stylish look.

These special features of the 'S' Pack complement the Meteor's high level of comfort, driveability and handling.

Fitted with an 'S' Pack, the Meteor becomes even more stylish, for the person who likes to be a little out of the ordinary.





About this brochure. This brochure is designed to provide you with a general introduction to the Ford Products (including available optional equipment) referred to, and should be read in conjunction with the latest specification sheets. Because of changes in conditions and circumstances Ford\* reserves the right, subject to all applicable laws, at any time, at their discretion, and without notice to discontinue or change the features, designs, materials, colours and other specifications and the prices of their products, and to either permanently or temporarily withdraw any such products from the market without incurring any liability to any

prospective purchaser or purchaser. The latest specification sheet should be referred to for information on the availability, ordering and use of optional equipment. Always consult an Authorised Ford Dealer for the latest information with respect to features, specifications, prices, optional equipment and availability before deciding to place an order

\* FORD MOTOR COMPANY OF AUSTRALIA LIMITED  
FORD SALES COMPANY OF AUSTRALIA LIMITED  
1735 SYDNEY ROAD, CAMPBELLFIELD, VICTORIA 3061.  
PRINTED APRIL 1982



# What a surprise!

 Ford Australia - We're moving with you.

FORD METEOR

