

FORD FALCON UTILITIES AND VANS



Ford Australia - We're moving with you.





Ford Falcon and Falcon GL Utes. You can't go past them.

You can't go past a Falcon Ute for its combination of car comfort, three-quarter tonne load capacity, and the economy of Ford's Alloy Head six cylinder engine.

With heavy ribbed-steel load floor, a Falcon Ute really delivers the goods. And it does it with style.

You can show off a Falcon Ute anywhere you'd take a car. It won't put you down.

Falcon Utes feature rigid full-frame doors, plus side extractor windows for excellent flow-through ventilation when you need it most.

Ford Falcon Utility
Standard equipment highlights:
ENGINE:

- 3.3 litre Alloy Head crossflow 6-cylinder engine

TRANSMISSION:

- 3-speed manual column shift transmission

WHEELS AND BRAKES:

- Styled steel road wheels
- ER78S14 steel belt radial ply tyres
- Power assisted front disc brakes

EXTERIOR:

- Rectangular quartz halogen headlights
- Gas strut engine hood support
- Styled left and right hand exterior rear view mirrors each with interior remote control

INTERIOR:

- Side air extraction windows
- 'Soft-feel' 4-spoke steering wheel
- Bench seat with folding centre armrest
- Rubber floor mat in passenger compartment
- Power assisted ventilation
- 3-speed heater/demister
- Steering column control stalk for turn/lane change signals, high/low beam, headlight flasher and horn
- Prismatic day/night interior rear view mirror
- Dash mounted handbrake with trigger release
- Lockable front passenger glovebox and dash integrated oddment tray
- 'Lights on' warning lamp
- Cigarette lighter

Ford Falcon GL Utility

Standard equipment highlights:

As for Ford Falcon Utility but with these different, upgraded or additional features:

EXTERIOR:

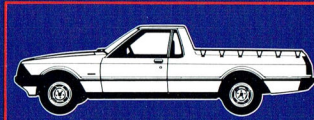
- Bodyside protection mouldings
- Tonneau cover - Bungie cord type

INTERIOR:

- Adjustable bucket seats with folding centre armrest
- Centre console with cigarette lighter and ashtray
- Carpeted floor in passenger compartment.



Illustrated above: Ford Falcon GL Ute.



Ford Falcon and Falcon GL Vans. Nothing else comes close.

Falcon is a favourite with panel van buyers, because of its crisp styling, passenger comforts and fuel efficient 3.3 litre Alloy Head cross flow 6 cylinder engine.

Combine these features with a strong steel-ribbed load floor, side extractor windows, full frame cab doors and you can see why a Falcon Van is ready for action at a moment's notice.

In addition, to the features of the Falcon Van, the Falcon GL van offers a carpeted passenger compartment, adjustable bucket seats, plus headlining and side glass in the load area.

Side-hinged rear doors are standard on the Falcon Van and optional at lower cost on the Falcon GL model. The lift tailgate is standard on Falcon GL van and optional at extra cost on the Falcon Van.

Ford Falcon Van
Standard equipment highlights:

ENGINE:

- 3.3 litre Alloy Head crossflow 6-cylinder engine

TRANSMISSION:

- 3-speed manual column shift transmission

WHEELS AND BRAKES:

- Styled steel road wheels
- ER78S14 steel belt radial ply tyres
- Power assisted front disc brakes

EXTERIOR:

- Rectangular quartz halogen headlights
- Gas strut engine hood support
- Styled left and right hand exterior rear view mirrors each with interior remote control
- Side hinged rear doors

INTERIOR:

- Side air extraction windows
- 'Soft-feel' 4-spoke steering wheel
- Bench seat with folding centre armrest
- Rubber floor mat in passenger compartment
- Power assisted ventilation
- 3-speed heater/demister
- Steering column control stalk for turn/lane change signals, high/low beam, headlight flasher and horn
- Prismatic day/night interior rear view mirror
- Dash mounted handbrake with trigger release
- Lockable front passenger glovebox and dash integrated oddment tray
- 'Lights on' warning lamp
- Cigarette lighter

Ford Falcon GL Van

Standard equipment highlights:
As for Ford Falcon Van but with these different, upgraded or additional features:

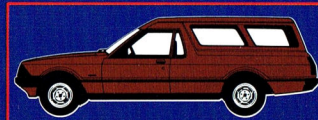
EXTERIOR:

- Bodyside protection mouldings
- Side glass in load compartment
- Lift tailgate

INTERIOR:

- Adjustable bucket seats with folding centre armrest
- Carpeted floor in passenger compartment.
- Rear load area headlining

Illustrated above: Ford Falcon GL Van.





Illustrated: Ford Falcon Ute. The business end. Three-quarter tonne capacity. Heavy gauge steel floor load area with ribbing for extra strength and easy loading/unloading. Double panelled sides in load area.



Illustrated: Falcon GL Ute with adjustable bucket seats and centre console—the four speed manual floor shift is optional at extra cost.



Illustrated: Falcon GL Ute showing opening side air extraction windows.



Illustrated: Falcon Ute/Van instrument panel and three speed manual column shift



Illustrated: Falcon GL Ute/GL Van passenger compartment. The three-speed automatic transmission with column shift is optional at extra cost.

PLEASE NOTE: The purpose of this brochure is to provide prospective purchasers with a general description of and an introduction to the products featured in it and should be read in the light of the following:

1. Subject to the laws of Australia and/or any applicable State or Territory thereof and/or the regulations of any competent authority which may apply from time to time, Ford Motor Company of Australia Limited and Ford Sales Company of Australia Limited each reserves the right at its discretion at any time and without prior notice to discontinue or change the models, features, specifications, designs and prices of the products referred to in this brochure and any standard, optional or available equipment therefor or any accessory for use on or in

connection therewith without incurring any liability whatsoever to any purchaser or prospective purchaser of any such product, item of equipment or accessory. Because of the possibility of the discontinuance of or changes in models, features, specifications, designs, standard, optional and available equipment, accessories and prices, a prospective purchaser should consult an authorised Ford Dealer for the latest information with respect to such matters and with respect to the availability of the products, optional and other equipment and accessories referred to in this brochure before deciding to place an order.

2. Some optional or other equipment items or accessories may be required to be ordered or used in combination with or without

other optional or other equipment items or accessories. Unless otherwise stated optional equipment and accessories are extra cost items. Details with respect to these requirements and costs can be obtained from an Authorised Ford Dealer.

3. Because of the variations which occur in manufactured products all capacities, measurements, dimensions and weights quoted in this brochure should be taken as approximate only.
4. The availability at any particular time of any of the products, items of standard, optional or available equipment or accessories referred to in this brochure will depend upon the local and/or overseas supply situation prevailing at that time.
5. Since the delivery of any product, item of optional or other equip-

ment or accessory can be delayed by causes beyond the reasonable control of Ford Motor Company of Australia Limited, Ford Sales Company of Australia Limited or their Dealers, a purchaser is advised, following the placing of an order, to keep in touch with the Dealer to determine the progress of the order.

6. Certain rights are conferred upon purchasers of goods by the laws of Australia and the States and Territories thereof which cannot be excluded from or be restricted, modified or limited by any contract for the sale and purchase of goods.
FORD MOTOR COMPANY OF AUSTRALIA LIMITED
FORD SALES COMPANY OF AUSTRALIA LIMITED
 1735 Sydney Road
 Campbellfield, Victoria, 3061.



FORD FALCON



Ford Falcon and Falcon GL Utilities and Vans

Options and Specifications Options are at extra cost unless otherwise stated

Please read in conjunction with Ford Falcon Utilities and Vans brochure

| OPTIONAL EQUIPMENT | Notes | Falcon Van | Falcon Utility | Falcon GL Van | Falcon GL Utility |
|---|--------|------------|----------------|---------------|-------------------|
| CONVENIENCE EQUIPMENT: | | | | | |
| Integrated air conditioning | | OPT | OPT | OPT | OPT |
| AM push-button radio with lock-down aerial | | OPT | OPT | OPT | OPT |
| AM push-button radio/stereo cassette tape player | (a) | OPT | OPT | OPT | OPT |
| AM/FM push-button radio/stereo cassette tape player | (b) | OPT | OPT | OPT | OPT |
| Windscreen wipers with intermittent setting | | OPT | OPT | OPT | OPT |
| Front bench seat (brown vinyl) | (c) | STD | STD | NCO | NCO |
| Tonneau cover (bungie-cord type) | | NA | OPT | NA | STD |
| Lift tailgate | | OPT | NA | STD | NA |
| Side opening rear doors | | STD | NA | O/R | NA |
| Vanside glass | | OPT | NA | STD | NA |
| Delete vanside glass | | STD | NA | O/R | NA |
| Striped wool blend seat facings | | NA | NA | OPT | OPT |
| HEAVY DUTY EQUIPMENT/ TOWING EQUIPMENT: | | | | | |
| 15 cwt load capacity | | STD | STD | STD | STD |
| 10 cwt load capacity | (d) | O/R | O/R | O/R | O/R |
| Outback Pack | (e) | OPT | OPT | OPT | OPT |
| Class I Towing Pack | (f)(i) | OPT | OPT | OPT | OPT |
| SPORTS TYPE EQUIPMENT: | | | | | |
| 'S Pack' | (g) | NA | NA | OPT | OPT |
| 'Volante' sports alloy road wheels | | OPT | OPT | OPT | OPT |
| Limited slip differential | (h) | OPT | OPT | OPT | OPT |
| Tinted-band, laminated windscreen | | OPT | OPT | OPT | OPT |
| POWER EQUIPMENT: | | | | | |
| 4-wheel power assisted disc brakes | (i) | OPT | OPT | OPT | OPT |
| Power steering | (j) | OPT | OPT | OPT | OPT |
| APPEARANCE EQUIPMENT: | | | | | |
| Metallic paint | (k) | OPT | OPT | OPT | OPT |
| ENGINE AND TRANSMISSION COMBINATIONS: | | | | | |
| 3.3 litre cross-flow 6-cylinder with: | | | | | |
| 3-speed manual column shift | (1) | STD | STD | STD | STD |
| 3-speed auto column shift | | OPT | OPT | OPT | OPT |
| 3-speed T-bar auto | (2) | NA | NA | OPT | NA |
| 4.1 litre cross-flow 6-cylinder with: | | | | | |
| 3-speed manual column shift | (1) | OPT | OPT | OPT | OPT |
| 3-speed auto column shift | | OPT | OPT | OPT | OPT |
| 4-speed manual floor shift | (2) | NA | NA | OPT | OPT |
| 3-speed T-bar auto | (2) | NA | NA | OPT | OPT |
| 4.9 litre V8 with: | | | | | |
| 3-speed auto column shift | | OPT | OPT | NA | NA |
| 4-speed manual floor shift | (2) | NA | NA | OPT | OPT |
| 3-speed T-bar auto | (2) | NA | NA | OPT | OPT |

STD means standard equipment **NA** means not available on this model **OPT** means option at extra cost **NCO** means no cost option **O/R** means option at reduced cost.

| TIRE AVAILABILITY: | |
|--|---|
| ER78S14 steel belt radial ply tyres (4 ply rating) | Standard on 6-cylinder with 10 cwt load capacity option |
| ER78S14 steel belt radial ply tyres (6 ply rating) | Standard on 6-cylinder with 15 cwt load capacity. |
| ER70H14 steel belt radial ply tyres (6 ply rating) | Mandatory at extra cost on 8-cylinder. Optional at extra cost on 6-cylinder. Standard when 'S Pack' is specified. |

NOTES TO CHARTS.

- AM radio/stereo cassette includes twin speakers on utilities, 4 speakers on vans and lock-down aerial.
- AM/FM radio/stereo cassette includes four speakers on vans, two speakers on Utilities and lock-down aerial.
- Dental check not available when front bench seat is specified. Front bench seat includes locking centre arm rest and is available only with column shift transmission.
- 10 cwt load capacity, which consists of different springs and a different rear axle ratio for 6-cylinder engines, is not available with the Outback Pack.
- Outback Pack consists of heavy duty rear axle, heavy duty air cleaner (6-cylinder only), engine camp guard and rear axle shock absorber protection plate.
- The Class I Towing Pack is designed to provide a towing capacity for loads with a gross weight of up to 5007 kg (22000 lbs) (see Class I below) when used in conjunction with a suitable caravan or trailer braking system. The Pack consists of: • Tow Bar • Goose-neck • Wiring harness with 7-pin electrical connector.
- Note:** The caravan or trailer braking system and any other items (such as the low ball and safety chains) required for the attachment of a trailer, caravan or other equipment to the vehicle are not supplied as part of the Pack and must be purchased at extra cost or be supplied by the purchaser of the vehicle. The Class I Towing Pack is designed to be incorporated in the vehicle during the assembly of the vehicle.
- 23 Pack includes the following different or upgraded features: • Distinctive paint treatment • Slotted steel road wheels with chrome trim rings • Comprehensive instrumentation including speedometer, tachometer, fuel, temperature and oil pressure gauges, volt meter, trip meter, low fuel warning lamp and digital clock • Windscreen wipers with intermittent setting • Striped wool blend cloth seat facings • Front speaker • Long range driving lights • ETR1014 steel bolt radial ply tyres • Delete body side mouldings.
- Limited slip differential is optional at extra cost with a 4.1 litre engine, and mandatory at extra cost with a 4.9 litre engine. A limited slip differential is not available when a 3.3 litre engine is specified.
- 4-wheel power assisted disc brakes are optional at extra cost with a 4.9 litre engine. 4-wheel power assisted disc brakes are not available when a 3.3 litre or 4.1 litre engine is specified.
- Power steering is not available with 3-speed manual column shift transmission but is mandatory at extra cost when the 4.9 litre V8 engine and integrated air conditioning are specified in combination.
- Consult the Ford Colour Selector or your authorized Ford Dealer to determine which colours are available on metallic paint.
- The actual towing capacity and performance of a vehicle will depend upon many factors including the condition of the vehicle, the vehicle load, the vehicle specifications, including engine capacity, transmission type, axle ratio, tyre type and size, weather conditions, road gradient and other terrain conditions.

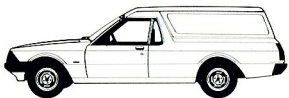
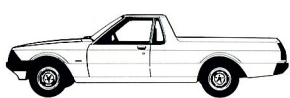
SPECIFICATIONS

| Dimensions: | |
|---------------------------------|--|
| Overall length - Utility | 4864mm (191.5") |
| Overall length - Van | 4967mm (195.6") |
| Overall width | 1860mm (73.2") |
| Overall height - Utility | 1382mm (54.4") |
| Overall height - Van | 1604mm (63.1") |
| Wheelbase | 2946mm (116.0") |
| Track - front | 1522mm (60.1") |
| -rear | 1527mm (60.1") |
| Ground clearance | 162mm (6.4") |
| Max. load length (bulkup/down) | 2696mm (106.1") |
| Max. load length (bulkup/class) | 2134mm (84.0") |
| Max. load length (functional) | 379mm (14.9") |
| Useful load tank capacity | 67.7 litres (14.9 gallons) |
| Turning circle | 12.4m (40.6ft) |
| Cubic capacity (Utility) | 1.1m ³ (39.4ft ³) |
| Cubic capacity (Van) | 2.8m ³ (98.6ft ³) |

Please note: All measurements, dimensions and capacities referred to are approximate only.

Some options are required to be ordered or used in combination with other options. Please consult the notes to the charts and your Authorized Ford Dealer for details before deciding to place your order.

Always discuss your intended purchase carefully with your Authorized Ford Dealer before deciding to place your order.



Ford Australia - We're moving with you.

Printed April 1981

FORD MOTOR COMPANY OF AUSTRALIA LIMITED
FORD SALES COMPANY OF AUSTRALIA LIMITED
1735 Sydney Road, Campbellfield, Victoria, 3061.

