



LTD

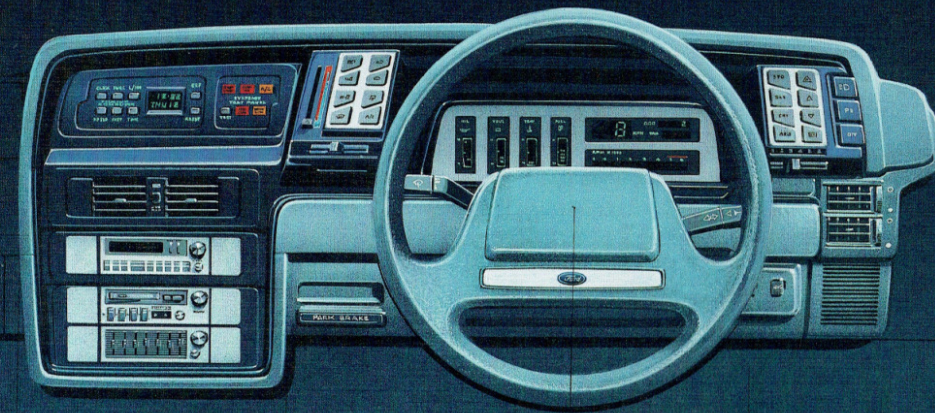
*Australia's most exclusive  
luxury car.*

# LTD

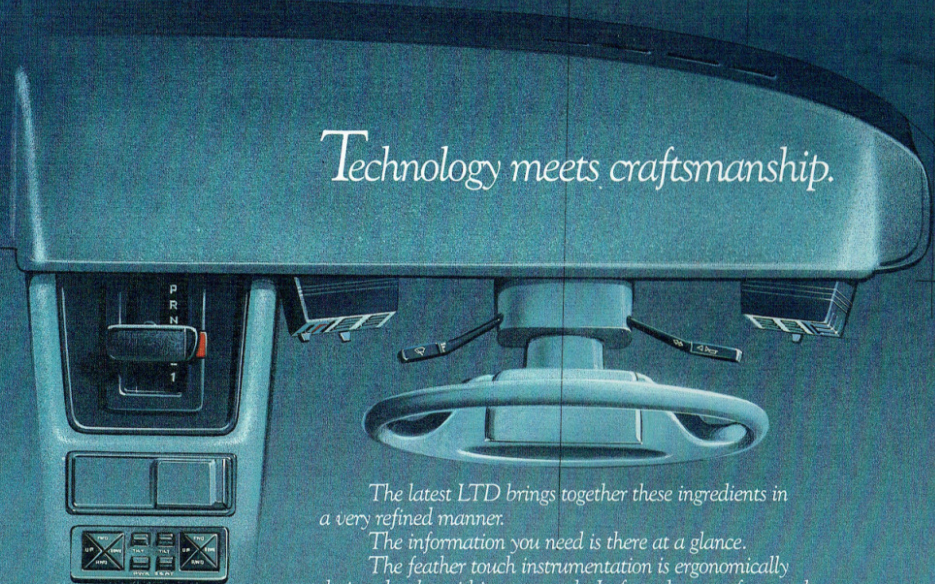
*There aren't too many to go around.*

*The new LTD, like its predecessors, is a most distinctive car. The number Ford make is very few, and the standards set in building them are very high. The quality, the care, the skilled craftsmanship involved is evident in the finished car. And this all takes a bit of extra time.*

*The Ford LTD is truly Australia's most exclusive luxury car.*



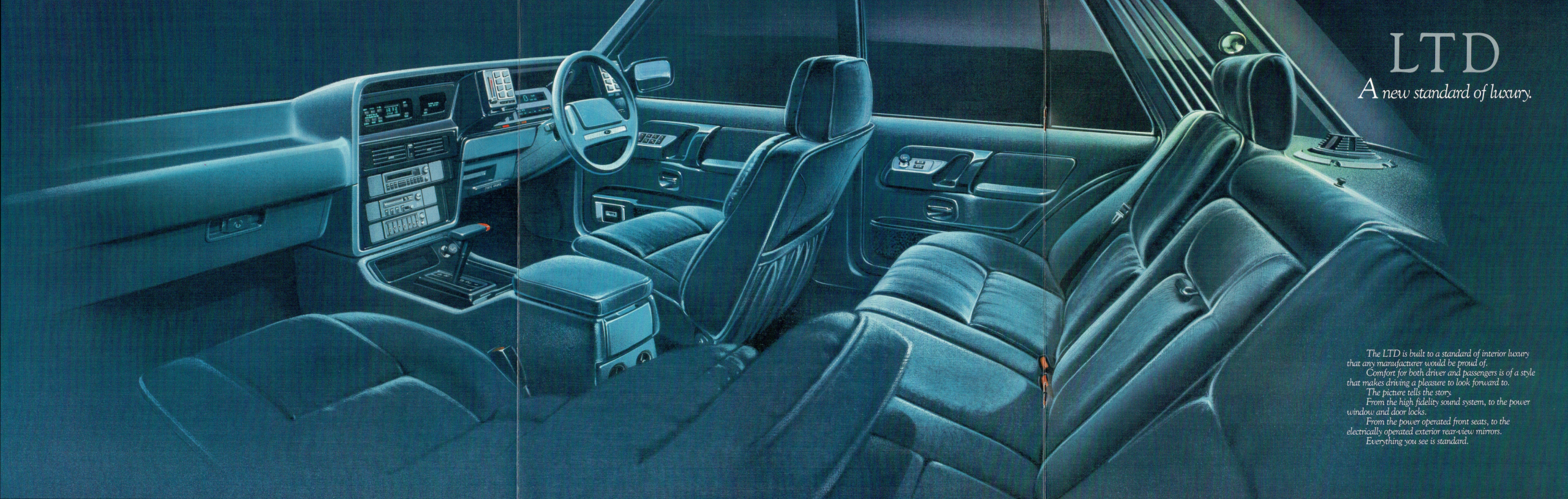
*Technology meets craftsmanship.*



*The latest LTD brings together these ingredients in a very refined manner.*

*The information you need is there at a glance.*

*The feather touch instrumentation is ergonomically designed to be within easy reach. In fact, the most frequently used switches can be operated without taking your hands away from the wheel.*



# LTD

*A new standard of luxury.*

*The LTD is built to a standard of interior luxury that any manufacturer would be proud of.*

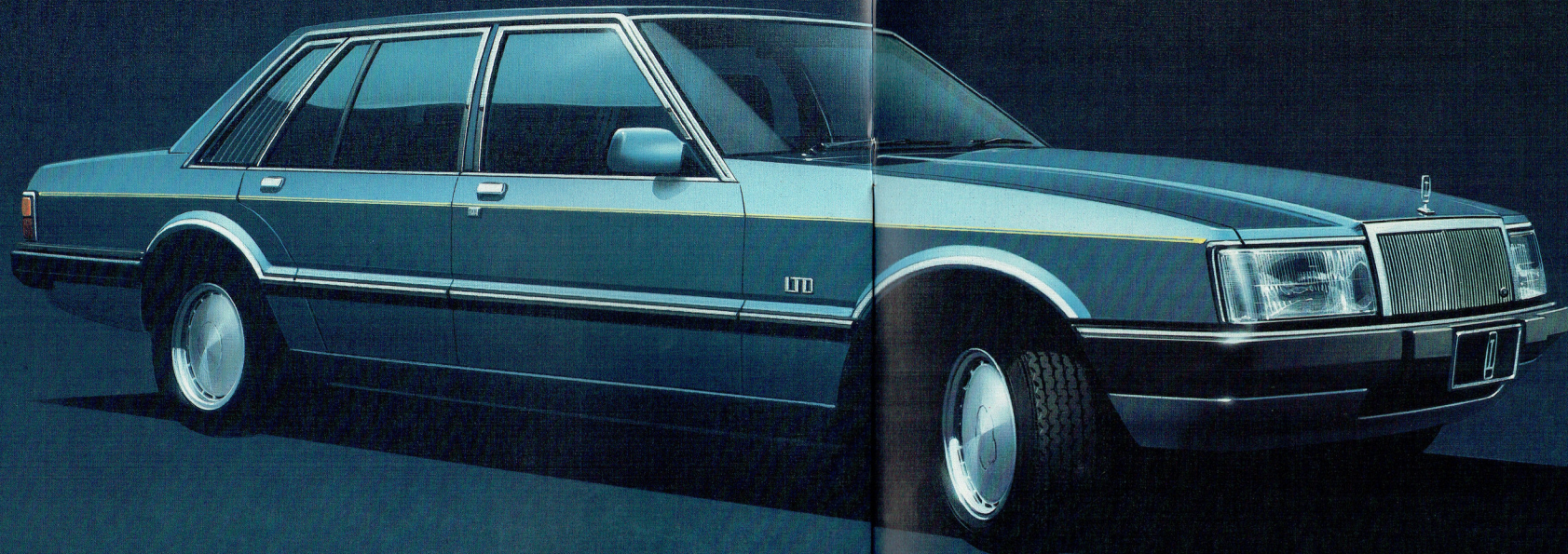
*Comfort for both driver and passengers is of a style that makes driving a pleasure to look forward to.*

*The picture tells the story.*

*From the high fidelity sound system, to the power window and door locks.*

*From the power operated front seats, to the electrically operated exterior rear-view mirrors.*

*Everything you see is standard.*



*The LTD is under  
new management.*

*Comfort and luxury are not the only criteria set for the LTD. Engineering excellence and superb performance are also important standards.*

*So, to the smooth and powerful 4.1 litre Electronic Fuel Injected engine we have added the EEC 4—Ford's fourth generation Electronic Engine Control on-board computer.*

*The computer monitors and controls many of the engine's vital functions in a way that has not only increased performance but has also improved LTD's fuel economy.*

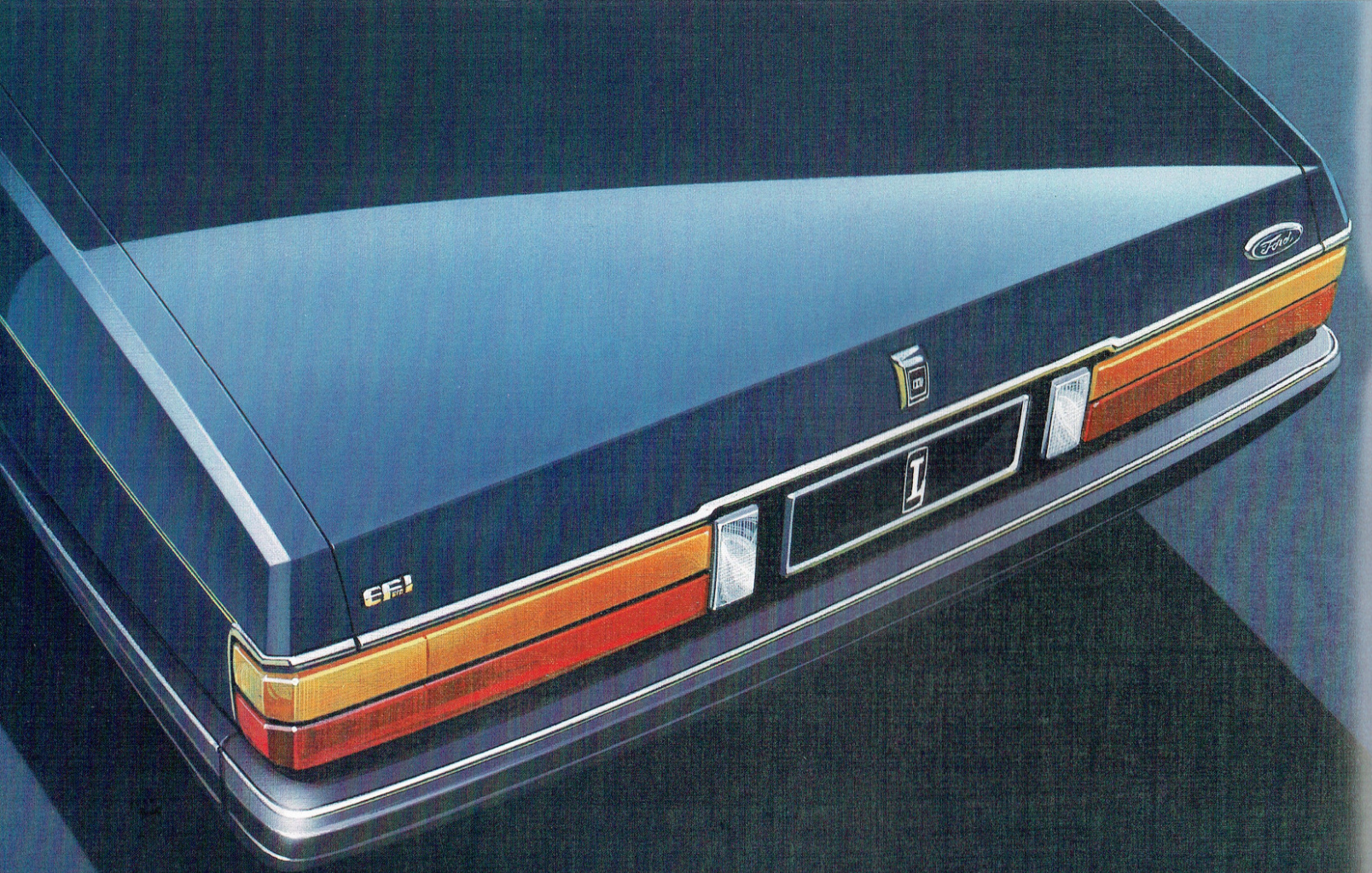
*It's a difference you can feel. The car responds smoothly and instantly.*

*How it does it is relatively simple.*

*The EEC 4 has sensors on various parts of the engine. These sensors tell the computer everything it needs to know to adjust the air/fuel mixture and the spark timing to achieve the designed level of performance.*

*Every spark on every stroke of the piston is adjusted to the driving conditions (accelerating, cruising, decelerating or idling). The fuel-air mixture is also adjusted at the same time.*

*The result is better fuel economy because you use only the required amount of fuel to match the driving conditions. And you get better performance because each piston stroke delivers improved power.*



# LTD

Australia's most exclusive  
luxury car.

FORD LTD 

*About this brochure. This brochure is designed to provide you with a general introduction to the Ford Products (including available optional equipment) referred to, and should be read in conjunction with the latest specification sheets. Because of changes in conditions and circumstances Ford\* reserves the right, subject to all applicable laws, at any time, at their discretion, and without notice to discontinue or change the features, designs, materials, colours and other specifications and the prices of their products, and to either permanently or temporarily withdraw any such products from the market without incurring any liability to any prospective purchaser or purchaser.*

*The latest specification sheet should be referred to for information on the availability, ordering and use of optional equipment. Always consult an Authorised Ford Dealer for the latest information with respect to features, specifications, prices, optional equipment and availability before deciding to place an order.*

\*FORD MOTOR COMPANY OF AUSTRALIA LIMITED  
(Incorporated in Victoria)  
Registered Offices: 1735 Sydney Road, Campbellfield, Victoria, 3061.  
FORD SALES COMPANY OF AUSTRALIA LIMITED  
(Incorporated in Victoria)  
Registered Offices: 1735 Sydney Road, Campbellfield, Victoria, 3061.  
Printed October 1984



# FORD LTD STANDARD EQUIPMENT HIGHLIGHTS

- 4.1 litre EFI engine with electronic engine control (EEC4)
- 3-speed T-bar automatic
- Cruise control
- Comprehensive electronic instrumentation with high visibility vacuum fluorescent type displays
- Trip computer with twelve functions
- Power adjustable front bucket seats
- Remote control power-operated exterior rear vision mirrors, colour-keyed, left and right sides
- Power operated door locks
- Power operated windows
- Adjustable steering column
- Power assisted steering
- 4-wheel disc brakes
- Airconditioning
- Rear passenger compartment airconditioning/ventilation outlets
- Premium sound system; AM/FM radio/cassette player with graphic equaliser and 4 speakers
- Plush velour seat facings
- Watts Link rear suspension system
- Alloy wheels, 15" x 6.5"
- Steel belt radial tyres, P205/65HR15
- Quartz halogen headlamps with integral driving lights
- Fold down rear seat centre section, with arm rest
- Adjustable front and rear head restraints
- Centre console with storage bin
- Prismatic day/night adjustable interior rear vision mirror
- Passenger vanity mirror
- Remote boot release with security switch
- Child proof rear door lock setting
- Remote fuel lid release
- Comprehensive interior courtesy lighting, including an illuminated entry system operating from both front door handles
- Cigar lighters, front and two rear
- Driver's footrest
- Tinted-band laminated windscreens
- Tinted side and rear glass
- Heated rear window
- Limited slip differential
- 4 speed fan boosted ventilation/heating
- Motorised oscillating ventilation outlet
- Power operated radio antenna
- Warning light array
- Systems check panel
- Hazard flashers
- Extra wide bodyside protection mouldings

## OPTIONAL EQUIPMENT AVAILABLE AT ADDITIONAL COST

- Diamond lustre paint
- Towing pack, rated at 1200 kgs.

