

The Aussie Van



Among tradesmen and around the building industry, the Aussie Van has become something of a tradition. And rightly so. Because nothing else matches the twin personalities of a Falcon Van.

When it's time to work, the Falcon Van gives you plenty of capacity and lock-up

security. But when it's time for leisure it holds its own against the sedans.

New Falcon Van is available in either a standard or GL model with an 'S' pack option available for the GL. Whichever model you choose, you'll find it's more comfortable and better appointed than ever before - sporting many of the

features found in Falcon sedans and wagons.

Features such as integrated head and driving lights, AM/FM stereo radio, deflectable exterior mirrors, intermittent wipers, glovebox light, ignition switch light and trip odometer. On the GL model you'll find an AM/FM radio stereo cassette player.

New Ford Falcon Vans - They stand alone.



New Ford Falcon Vans

Under the bonnet

The standard van has Ford's advanced Alloy Head II 3.3 litre 6 cylinder engine, incorporating the latest in lean burn technology. More performance and torque but with better fuel economy in town or out. Three speed manual transmission on the column is standard.

The GL model is powered by Ford's 4.1 litre 6 cylinder Alloy Head II engine combined with a 4 on the floor transmission.



Interior of the Standard Van featuring Centafold seat.

At the working end

But your Falcon van also has to work hard. There's plenty of carrying capacity and headroom. There's security and all weather protection.

The standard van is fitted with side opening doors while the GL model has a liftgate/tailgate design.



Interior of the GL Van featuring cloth covered seats and centre console.

S Pack

An optional sporty S pack is available on GL models to add even more style and excitement to your driving. Special sports cloth seat facings. Adjustable lumbar support and tilt for the driver. Rake adjustable steering wheel. The comprehensive instrumentation

includes a digital clock and tachometer. Outside there are S pack stripes and other special appearance items including sporty styled wheels and trim rings. And for clear vision in mist, there is a pair of powerful fog lamps.

Optional Extras:

If preferred, the standard model can be fitted with the 4.1 litre engine and either automatic or manual transmission with column shift.

Automatic transmission with column shift is available on the GL model.

Additional options

Both models

- Heavy duty suspension
- Power steering
- Airconditioning
- Tow pack
- Heavy duty cooling (4.1 L automatic only)

Additional GL models

- Centafold seat (with column shift only)
- Vinyl trim (fawn only)

In the cab

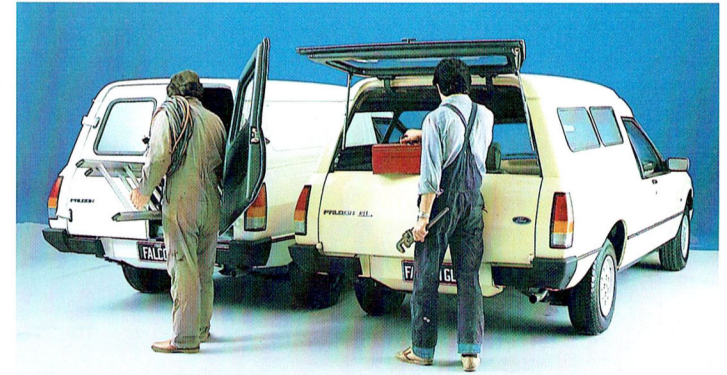
Once behind the wheel, you almost forget you're driving a hard working van - so closely does it resemble a sedan. Well appointed, spacious - in fact the standard model incorporates a vinyl faced Centafold seat that turns 2 seats into 3 seats at the flip of an arm rest. While the GL model has the same cloth faced bucket seats as the sedan.

The console of the GL attractively matches the interior colours and an AM/FM radio cassette player is provided to keep you company on long runs.

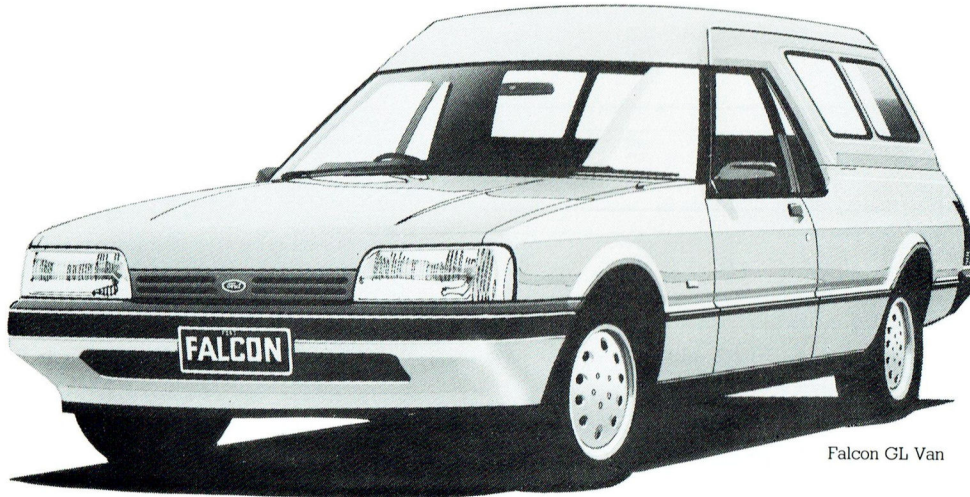


About this brochure. This brochure is designed to provide you with a general introduction to the Ford Products (including available optional equipment) referred to, and should be read in conjunction with the latest specification sheets. Because of changes in conditions and circumstances Ford reserves the right, subject to all applicable laws, at any time, at their discretion, and without notice to discontinue or change the features, designs, materials, colours and other specifications and the prices of their products, and to either permanently or temporarily withdraw any such products from the market without incurring any liability to any prospective purchaser or purchaser. The latest specification sheet should be referred to for information on the

availability, ordering and use of optional equipment. Always consult an Authorised Ford Dealer for the latest information with respect to features, specifications, prices, optional equipment and availability before deciding to place an order. * FORD MOTOR COMPANY OF AUSTRALIA LIMITED (Incorporated in Victoria) Registered offices: 1735 Sydney Road, Campbellfield, Victoria, 3061. FORD SALES COMPANY OF AUSTRALIA LIMITED (Incorporated in Victoria) Registered offices: 1735 Sydney Road, Campbellfield, Victoria, 3061. Printed October 1984



Ford Falcon Vans



Falcon GL Van

Ford Falcon Van Standard Equipment Highlights:

- 3.3 litre Alloy Head II crossflow 6-cylinder engine
- Electronic ignition
- 3-speed manual column shift transmission
- AM/FM stereo push button radio
- Tinted band laminated windscreen
- Digital Clock
- Steel belt radial ply tyres: P195/78SR14 or ER78S14
- Power assisted front disc brakes
- Quartz halogen headlamps
- Integral driving lights
- Foldaway right and left hand exterior rear view mirrors, each with interior remote control
- Padded outboard head restraints
- Hazard flashers
- 2-speed windscreen wipers with intermittent setting
- 'Soft-feel' 4-spoke steering wheel
- 'Lights on' warning lamp
- 4-speed heater/demister
- Binnacle mounted switches
- Cigarette lighter
- Tripmeter
- Prismatic day/night interior rear view mirror
- Centafold bench seat
- Vinyl seat trim
- Passenger compartment rubber floor mat
- Interior courtesy light operated by side doors
- Twin rear doors — side hinged
- Tinted side door window glass
- Moulded door trims
- Ignition lock illumination
- Glove box light

Ford Falcon GL Van Standard Equipment Highlights:

As for Falcon Van but with these different, upgraded or additional features.

- 4.1 litre Alloy Head II crossflow 6 cylinder engine
- 4-speed manual floor shift transmission
- AM/FM stereo radio cassette player
- Bodyside protection mouldings
- Bucket seats
- Cloth seat facings
- Carpeted passenger compartment floor
- Side windows
- Load area headlining
- Lift-up/drop down tailgate
- Centre console
- Full wheel covers

Specifications

FORD FALCON VANS

Engine	3.3 litre	4.1 litre
Power DIN Kw*	90 @ 4100	103 @ 3750
Torque DIN Nm*	240 @ 2500	316 @ 2400
Cylinder head material:	Aluminium alloy with sintered iron valve seat inserts	
Cylinders	6 in line	6 in line
Main Bearings	7	7
Fan	Temperature sensitive viscous clutch (TSVC)	
Bore	93.5mm	93.5mm
Stroke	79.4mm	99.3mm
Capacity	3273cc	4089cc
Valve Gear	Overhead valves with hydraulic tappets	
Camshaft Drive	Chain Drive	
Compression Ratio*	9.3:1	

* Not necessarily applicable for vehicles manufactured for sale in NSW.

Suspension

Front	•Independent short/long arm •Progressive rate coil springing •Twin tube telescopic shock absorbers mounted co-axially within the coil springs •22mm diameter stabiliser bar	Rear	•Rigid axle •Hotchkiss suspension •6-leaf springs •Twin tube telescopic shock absorbers
-------	--	------	--

Fuel System

Fuel System	3.3 and 4.1 litre
	Weber model 'ADM' dual venturi, sequential (progressive) throttle, fixed jet downdraft carburettor with electrically operated choke. Mechanical fuel pump.

Dimensions

Dimensions	Metric	Imperial
Overall Length	4923mm	193.8"
Overall Width	1860mm	73.2"
Overall Height	1604mm	63.1"
Wheelbase	2957mm	116.4"
Track — Front	1552mm	61.1"
— Rear	1525mm	60.0"
Ground clearance	162mm	6.4"
Max.load length (tailgate closed)	2134mm	84.0"
Load height (unladen)	579mm	22.8"
Usable fuel tank capacity	68 litres	14.9 gal.
Turning circle	11.8m	38.7 ft
Cubic capacity	2.8m ³	98.9 ft ³

Options

FORD FALCON VANS

Engine/Transmission Combinations

Engine	Transmission	Notes	Falcon Van	Falcon GL Van
3.3 litre Alloy Head II	3-speed manual column shift Column automatic	(a)(b) (c)	STD OPT	N/A N/A
4.1 litre Alloy Head II	3-speed manual column shift 4-speed manual floor shift Column automatic	(a)(b) (a)	OPT N/A OPT	N/A STD OPT

Convenience

Integrated air conditioning			OPT	OPT
Centafold seat		(a)	STD	OPT
Vinyl trim			STD	OPT

Sports Type

S-Pack		(a)(d)	N/A	OPT
--------	--	--------	-----	-----

Power

Power steering		(b)	OPT	OPT
----------------	--	-----	-----	-----

Tyre Availability

ER78S14 steel belt radial ply tyres				
or P196/78SR14 steel belt radial ply tyres			STD	STD
ER70H14 steel belt radial ply tyres			OPT	OPT
(Standard with S-Pack option)				

Other Packs

Heavy Duty Suspension		(e)	OPT	OPT
Towing Pack		(f)	OPT	OPT
Heavy Duty Towing Cooling Pack		(g)	OPT	OPT

Appearance

Metallic Paint		(h)	OPT	OPT
Prestige Paint		(h)	OPT	OPT

OPT — Optional at extra cost. STD — Standard Equipment. N/A — Not available.

About this specification sheet. This sheet is designed to provide you with selected specification data for the Ford Products which have been described in a general way in the relevant brochure. Because of changes in conditions and circumstances Ford* reserves the right, subject to all applicable laws, at any time, at their discretion, and without notice to discontinue or change the features, designs, materials, colours and other specifications and the prices of their products, and to either permanently or temporarily withdraw any such products from the market without incurring any liability to any prospective purchaser or purchaser.

Because of variations which occur in manufactured products, all capacities, measurements, dimensions and weights quoted in the relevant brochure and this specification sheet should be taken as approximate only.

Always consult an Authorised Ford Dealer for the latest information with respect to features, specifications, prices, optional equipment and availability before deciding to place an order.

*FORD MOTOR COMPANY OF AUSTRALIA LIMITED
(Incorporated in Victoria)
FORD SALES COMPANY OF AUSTRALIA LIMITED
(Incorporated in Victoria)

Registered offices:
1735 SYDNEY ROAD, CAMPBELLFIELD, VICTORIA, 3061.

Footnotes

- (a) Centafold front seat is standard on Falcon Van which is fitted with a column shift transmission. Falcon GL Van is fitted with bucket seats and a 4-speed manual floor shift as standard. Centafold is not available with floor shift transmission or when the S-Pack option is specified.
- (b) Power steering is not available with a three-speed manual column shift transmission.
- (c) Not available in NSW.
- (d) The S-Pack option is only available with floor shift transmission and includes:
- Fog lamps
 - Styled steel wheels with chrome trim rings
 - ER70H14 steel belted radial tyres
 - Sports instrumentation, consisting of analogue display tachometer and speedometer and a pair of dual function electronic vacuum fluorescent minor gauges. The bar graph type minor gauges provide water temperature and fuel level, or, at the touch of a button, the display will indicate battery voltage and oil pressure. If a critical situation develops, the display will automatically revert to that function
 - Checked tweed cloth seat facings
 - Steering column rake adjustment
 - Adjustable lumbar support and seat tilt for the driver
 - Driver's footrest
 - Distinctive paint/stripes treatment
- (e) The Heavy Duty Suspension option consists of heavy duty springs and heavy duty shock absorbers.
- (f) The Towing Pack is a factory-fitted option and provides a towing capacity of 1200 kgs for 4.1 litre vehicles, or 1000 kgs for 3.3 litre vehicles, when used in conjunction with a suitable caravan or trailer braking system and towing equipment. This pack consists of:
- Tow bar
 - Gooseneck
 - Wiring harness with 7 pin electrical connector
 - Transmission oil cooler (automatic transmissions only).
- Note: The caravan or trailer braking system and any other items (such as the tow ball and safety chains) required for the attachment of a trailer, caravan or the like to the vehicle are not supplied as part of the Pack, and must be purchased at extra cost or be supplied by the purchaser of the vehicle.
- The Towing Pack is designed to be incorporated in the vehicle during the assembly of the vehicle. The actual towing capability and performance of a vehicle will depend upon many factors including the suitability of the caravan, trailer etc., the condition of the vehicle, the vehicle load, the vehicle specifications (including engine capacity, transmission type, axle ratio, tyre type and size), weather conditions, road gradient, terrain and other prevailing conditions.
- A towing accessory is also available for fitment from your Authorised Ford Dealer. A Ford-approved transmission oil cooler must be fitted in conjunction with any towing accessory fitted to automatic vehicles and used to tow a gross weight of more than 500 kgs. Consult your Authorised Ford Dealer for the latest information with respect to the specifications and the availability of this accessory towing pack.
- (g) This pack comprises a radiator shroud (unless already fitted as part of the Air Conditioning option), and an increased capacity radiator. It is only available on 4.1 litre automatics.
- (h) Not all colours are available in metallic paint or prestige paint. Consult the Ford colour selector or your Authorised Ford Dealer to determine which colours are available in metallic paint or prestige paint.