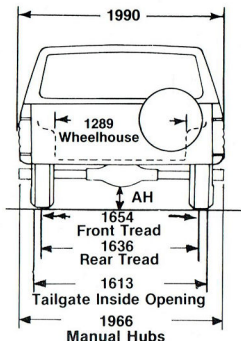
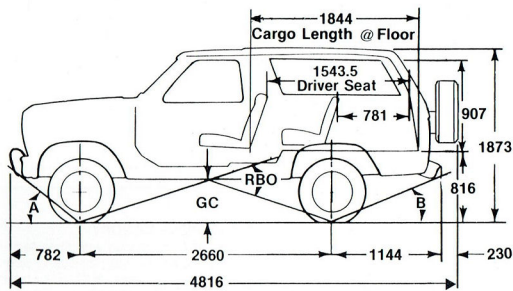


**Bronco  
XLT  
1985 M.Y.**

# BRONCO



### DIMENSIONAL DATA

#### Dimensions — Minimum Equipment — mm

	A	RBO	B	GC	AH	Turning Dia*
2660 WB	34.3°	20.4°	20.7°	234	F-160; R-162	11.2m

\*Kerb to kerb

### MASS DATA

#### Kerb Mass — Minimum Equipment — kg\*

	Front	Rear	Total
2660 WB — Manual Transmission	1038	1128	2166

\*Kerb Mass includes all fluids, full fuel, less driver and passenger. Kerb masses are calculated and subject to variation.

### BODY DATA

#### Body, Payload and Occupant Capacity — Minimum Equipment — kg

2660 WB	744
---------	-----

#### PLEASE NOTE:

■ 1. This specification sheet contains a general description only of the Ford Product referred to on the sheet, its specifications and features and the optional equipment which is currently available for use on or in connection with such product. Generally the optional equipment referred to is available at extra or variable cost. Certain optional equipment can only be used or ordered in combination with other optional equipment. ■ 2. The illustrations, information and specifications presented and referred to in this specification sheet were correct at the time when the specification sheet was approved for printing. However, Ford Motor Company of Australia Limited and/or Ford Sales Company of Australia Limited reserve(s) the right, subject to the laws of Australia and/or any applicable State or Territory thereof and/or the regulations of any competent Authority which may apply from time to time, at their or its discretion at any time and without prior notice to discontinue or change the models, features, specifications, designs and prices of the product referred to in this sheet and any optional equipment therefor without incurring any liability whatsoever to any purchaser or prospective purchaser of any of such products. ■ 3. All capacities, measurements, dimensions and weights quoted in this specification sheet are approximate only. ■ 4. Because of the possibility of changes in models and the information, specifications, features, standard equipment and optional equipment of or for the product referred to in this specification sheet a prospective purchaser is strongly advised to consult an Authorised Ford Dealer for the latest information on models, specifications, features, standard equipment, optional equipment, prices and availability before placing an order. ■ 5. From time to time deliveries are delayed by causes outside the reasonable control of Ford Motor Company of Australia Limited, Ford Sales Company of Australia Limited or their Authorised Ford Dealers. When an order has been placed, please keep in touch with your Authorised Ford Dealer.

\*FORD MOTOR COMPANY OF AUSTRALIA LIMITED  
(Incorporated in Victoria)  
FORD SALES COMPANY OF AUSTRALIA LIMITED  
(Incorporated in Victoria)

Registered Offices: 1735 Sydney Road,  
Campbellfield, Victoria, 3061.



**BRONCO : MASS—LOAD RATINGS**

Gross Vehicle Mass, Gross Combination Mass, and Ground Ratings (kg)

<b>GVM — PLATED</b>	<b>2910</b>
<b>GCM — PLATED</b>	<b>4600</b>
<b>Front Axle</b>	<b>1610</b>
<b>Front Tyres</b>	<b>1800 (P235/75R-15 [EL])</b>
<b>Front Suspension</b>	<b>1304</b>
<b>FRONT RATING</b>	<b>1304</b>
<b>Rear Axle</b>	<b>1701</b>
<b>Rear Tyres</b>	<b>1800 (P235/75R-15 [EL])</b>
<b>Rear Suspension</b>	<b>1707</b>
<b>REAR RATING</b>	<b>1701</b>

\* ABOVE TABLE SHOWS MINIMUM EQUIPMENT FOR PLATED GVM/GCM

**AXLE FRONT**

- Twin traction beam independent front suspension; Make: Dana 44-IFS; hypoid; 216 mm diameter ring gear; ● Ratio 3.50:1; ● Fitted with manual free wheel hubs; ● Limited slip differential; ● Capacity 1610 kg

**AXLE REAR**

- Ford semi-floating hypoid; Ratio 3.50:1; ● Traction-Lok LSD; 229 mm diameter ring gear; ● Capacity 1701 kg

**BRAKES**

- **Service:** Dual line power assisted hydraulic; ● **Front:** Single piston floating caliper, ventilated disc; Disc diameter 295 mm; ● **Swept area:** 1418 cm<sup>2</sup>;
- **Rear:** Duo-servo drum with automatic adjusters; ● **Size:** 280 x 57 mm; ● **Lining area:** 618 cm<sup>2</sup>; ● **Power assistance unit:** Direct action tandem diaphragm vacuum booster; 280 mm diameter; ● **Park brake:** Foot operation variable ratio, cable actuation of rear brakes, with hand operated release

**CHASSIS**

- Pressed steel; Ladder construction; Section 176.5 x 53.8 x 4.3 mm; ● Section modulus 58.3 cm<sup>3</sup> ● Front tow hooks

**CLUTCH**

- Single plate dry clutch of 280 mm diameter; Diaphragm spring pressure plate; Hydraulic actuation; ● Total facing area 798 cm<sup>2</sup>

**DRIVELINE**

- 1130 Series

**ELECTRICAL**

- 12 Volt negative earth system; Battery 12 V 53 amp hour capacity; Alternator 55 amp capacity; ● Headlamps rectangular halogen with integral parking lamps; Front turn signal lamps; Side turn signal repeater lamp; Rear combination stop-tail-turn signal — backup-lamps with integral rear reflectors; ● Dual horn;
- Interior courtesy lamp actuated by doors and lighting switch; cargo lamp;
- Instruments — Speedometer-odometer; Tachometer; Oil Pressure gauge; Ammeter; Digital clock; Fuel gauge; Water temperature gauge;
- Warning lights for — Alternator charge; Brake circuit fail; High beam; Direction indicator; Park brake; 4 x 4 lock; Heated backlight

**ENGINE**

- Ford 5.0 litre EFI V/8 (unleaded petrol);
- †Nett power at specified RPM 126 KW @ 4000;
- †Nett torque at specified RPM 358 Nm @ 2500

- **Specification:** ● Type 8-cyl, 90° Vee, Overhead Valve; ● Displacement (litres) 5.0; ● Bore and Stroke (inches) 4.00 x 3.00; ● Compression Ratio (to 1) 9.0; ● Main Bearings 5; ● Valve Lifters hydraulic; ● Fuel Injection System multi-port; ● Fuel unleaded; ● Ignition electronic; ● Exhaust single

- **Features:** ● Eight-port synchronous single-fire strategy fuel injection system; ● New intake air system with remote engine mounted air cleaner assembly; ● Modern, lightweight cylinder block; ● EEC-IV electronic engine controls; ● Speed-density air flow measurement system; ● Reduced back-pressure exhaust system; ● Self-adjusting hydraulic valve lifters; ● Five steel-backed copper-lead main bearings; ● Positive rotators on exhaust valves; ● Uses unleaded fuel

**FUEL SYSTEM**

- 121 litre fuel tank mounted aft of rear axle with skid plate

**FRONT SUSPENSION**

- Coil springs and telescopic quad shock absorbers with stabilizer bar

**REAR SUSPENSION**

- Semi-elliptic leaf spring; ● Telescopic shock absorbers with stabilizer bar

**STEERING**

- Bendix power assisted, variable ratio; ● Ratio 11-17.5:1

**TRANSMISSION**

- **Main:** New Process model 435; Four forward speed with synchromesh on 2nd, 3rd, 4th gears; ● Ratios 6.69; 3.34; 1.79; 1.00:1; Reverse 8.26:1; ● 6 bolt SAE pattern PTO mounting on RH side

- **Transfer:** New Process 208 model two speed with floor change; ● Ratios 2.61; 1.00:1

**WHEELS**

- 15 x 7 styled steel wheel, 5 stud; 5 supplied

**TYRES**

- P235/75R—15 (EL) radial ply tyres — 5 supplied; ● **Spare wheel:** Mounted on rear of cab on swing-away carrier

**CAB AND REAR CANOPY**

**Features:** ● All steel cab with fibreglass rear canopy; Canopy has half-sliding side glass; ● Air conditioning; ● AM/FM stereo radio cassette; ● Front bucket seats with adjustable headrest; ● Rear bench flip fold seat; Cloth trim all seats; ● Inertia reel front seat belts; static rear lap seat belts, LH, RH and centre; ● Plush carpet; ● Padded sunvisors; ● Coathooks; ● Cigarette lighter, ashtray; ● Lockable glove compartment; ● Fresh air ventilation and three speed heater demister; ● Two speed windshield wipers with intermittent setting; windshield washers; ● Two external and one prismatic internal rear view mirrors; ● Four-bar link tilting passenger seat; ● Laminated tinted-band windshield; ● Woodgrain style instrument panel; ● Passenger grab handles; ● Lockable centre console ● Air conditioning

**Exterior Features:** ● Chrome front bumper with overriders; ● Black painted headlamp surround and grille; ● XLT emblems; ● Bright aluminium bodyside mouldings with black vinyl insert; ● Bright mouldings on rear side windows; ● Rear wheel mudflaps; ● Chrome rear step bumper

**OPTIONAL EQUIPMENT**

- **Automatic Transmission:** ● Ford C6 3-speed automatic with torque converter; ● Ratios 2.46; 1.46; 1.00:1; Reverse 2.18:1; ● Steering column change with illuminated quadrant;

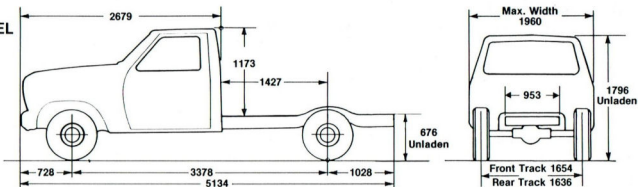
- **Appearance Equipment:** ● Victoria-tone paint treatment with Accent tape stripes; ● 10 x 15 Radial tyres

1 Actual engine flywheel power has been derived from test procedure DIN 70020. As there can be variations in the performance ratings of individual units, the above ratings must be taken as being approximate only. (See notes on reverse side hereof.)

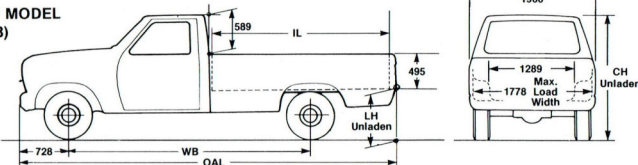
# F-100 Style & Chassis Cab 1985 M.Y.

# F-SERIES 4x2

## CHASSIS-CAB MODEL (3378 WB ONLY)



## STYLESIDE PICK-UP MODEL (2967 WB & 3378 WB)



### DIMENSIONAL DATA

Dimensions — Minimum Equipment — mm	OAL	LH	CA	IL	Turning Dia*
2967 WB Styleside Pick-Up	4879	1790	754	2084	12.2 m
3378 WB Styleside Pick-Up	5290	1790	747	2459	13.6 m
3378 WB Chassis-Cab					13.6 m

\*Kerb to kerb

### MASS DATA

Kerb Mass — Minimum Equipment — kg*	Front	Rear	Total
2967 WB Styleside Pick-Up Manual Transmission	952	698	1650
3378 WB Styleside Pick-Up Manual Transmission	981	689	1670
3378 WB Chassis Cab Manual Transmission	980	518	1498

\*Kerb Mass includes all fluids, full fuel, less driver and passenger. Kerb masses are calculated and subject to variation.

### BODY DATA

#### Body, Payload and Occupant Capacity\* — Minimum Equipment — kg

2967 WB Styleside Pick-Up	1116
3378 WB Styleside Pick-Up	1624
3378 WB Chassis-Cab	1268

#### Recommended Body Dimensions mm (Subject to State Regulations)

3378 WB Chassis-Cab — Length O/A 2950 × Width O/A 2100

\*Recommended Min. Payload 68 kg

### PLEASE NOTE:

■ 1. This specification sheet contains a general description only of the Ford Product referred to on the sheet, its specifications and features and the optional equipment which is currently available for use on or in connection with such product. Generally the optional equipment referred to is available at extra or variable cost. Certain optional equipment can only be used or ordered in combination with other optional equipment. ■ 2. The illustrations, information and specifications presented and referred to in this specification sheet were correct at the time when the specification sheet was approved for printing. However, Ford Motor Company of Australia Limited and/or Ford Sales Company of Australia Limited reserves the right, subject to the laws of Australia and/or any applicable State or Territory thereof and/or the regulations of any competent Authority which may apply from time to time, at their or its discretion at any time and without prior notice to discontinue or change the models, features, specifications, designs and prices of the product referred to in this sheet and any optional equipment therefor without incurring any liability whatsoever to any purchaser or prospective purchaser of any of such products. ■ 3. All capacities, measurements, dimensions and weights quoted in this specification sheet are approximate only. ■ 4. Because of the possibility of changes in models and the information, specifications, features, standard equipment and optional equipment of or for the product referred to in this specification sheet a prospective purchaser is strongly advised to consult an Authorised Ford Dealer for the latest information on models, specifications, features, standard equipment, optional equipment, prices and availability before placing an order. ■ 5. From time to time deliveries are delayed by causes outside the reasonable control of Ford Motor Company of Australia Limited, Ford Sales Company of Australia Limited or their Authorised Ford Dealers. When an order has been placed, please keep in touch with your Authorised Ford Dealer.

# F-100 Styleside & Chassis Cab 1985 M.Y.

# F-SERIES 4x2

## F-100 4x2 : MASS—LOAD RATINGS Gross Vehicle Mass, Gross Combination Mass, and Ground Ratings (kg)

<b>GVM — PLATED</b>	<b>2766</b>
<b>GCM — PLATED</b>	<b>4600</b>
<b>Front Axle</b>	<b>1542</b>
<b>Front Tyres</b>	<b>1800 (P235/75R-15 [EL])</b>
<b>Front Suspension @ Ground</b>	<b>1598</b>
<b>FRONT RATING</b>	<b>1542</b>
<b>Rear Axle</b>	<b>1701</b>
<b>Rear Tyres</b>	<b>1800 (P235/75R-15 [EL])</b>
<b>Rear Suspension @ Ground</b>	<b>1891</b>
<b>REAR RATING</b>	<b>1701</b>

### \* ABOVE TABLE SHOWS MINIMUM EQUIPMENT REQUIRED FOR PLATED GVM/GCM

#### AXLE FRONT

● Twin I Beam independent front suspension with adjustable camber feature

#### AXLE REAR

● Trac-tion-loc limited slip differential; ● Rating 1701 kg; 229 mm diameter ring gear;

● Ratio 3.50:1

#### BRAKES

● Service: Dual line power assisted hydraulic

● Front: Single piston floating caliper, ventilated disc; ● Rear: Duo-servo drum with automatic adjusters;

● Size: ● Front: 295 mm diameter;

● Sweep area: 1418 cm<sup>2</sup> ● Rear: 280 x 57 mm; Lining area: 618 cm<sup>2</sup>

● Power assistance unit: Direct acting tandem diaphragm vacuum booster; 280 mm diameter

● Park Brake: Foot operated, variable ratio, cable actuation of rear brakes, with hand operated release

#### CHASSIS

● Pressed steel; Ladder type Section 176 x 56.6 x 3.7 mm; ● Section modulus 52.4 cm<sup>3</sup>

#### CLUTCH

● Single Plate dry clutch of 280 mm diameter; Diaphragm spring pressure plate; Hydraulic actuation; ● Total facing area 798 cm<sup>2</sup>

#### DRIVELINE

● 1330 Series

#### ELECTRICAL

● 12 Volt negative earth system; Battery 12 V 53 amp hour capacity; Alternator 55 amp capacity; ● Headlamps rectangular halogen with integral parking lamps; Front turn signal lamps; Side turn signal repeater lamp; Rear combination stop-tail-turn signal — backup-lamps with integral rear reflectors; ● Single horn; ● Two speed windshield wipers with intermittent setting; Windscreen washers; ● Interior courtesy lamp actuated by doors and lighting switch

● Instruments — Speedometer-odometer, Tachometer, Fuel gauge, Water temperature gauge, Ammeter gauge, Oil pressure gauge

● Warning lights for — Alternator charge; High beam; Brake circuit fail; Direction indicator; Park brake

#### ENGINE

● Ford 5.0 litre EFI V/8 (unleaded petrol);

● Net power at specified RPM

126 kW @ 4000;

● Net torque at specified RPM

358 Nm @ 2500

Specification: ● Type 8-cyl, 90° Vee, Overhead Valve; ● Displacement (litres) 5.0; ● Bore and Stroke (inches) 4.00 x 3.00; ● Compression Ratio (to 1) 9.0; ● Main Bearings 5; ● Valve Lifters hydraulic; ● Fuel Injection System multi-port; ● Fuel unleaded; ● Ignition electronic; ● Exhaust single

Features: ● Eight-port synchronous single-fire strategy fuel injection system; ● New intake air system with remote engine mounted air cleaner assembly;

● Modern, lightweight cylinder block; ● EEC-IV electronic engine controls;

● Speed-density air flow measurement system; ● Reduced back-pressure exhaust system; ● Self-adjusting hydraulic valve lifters; ● Five steel-backed copper-lead main bearings;

● Positive rotators on exhaust valves; ● Uses unleaded fuel

#### FUEL SYSTEM (Dual Tank)

● 134 litre capacity on 2967 mm WB model, (62 litre mid-frame and 72 litre aft axle)

● 144 litre capacity on 3378 mm WB model (72 litre mid-frame and 72 litre aft axle)

FRONT SUSPENSION

● Coil springs with telescopic double-acting shock absorbers;

#### REAR SUSPENSION

● Semi elliptical leaf spring; ● Auxilliary rear leaf spring; ● Telescopic double acting shock absorbers; ● Rear axle stabilizer bar on 2976 mm WB model only

#### STEERING

● Power steering (Bendix variable ratio; Ratio 11:17.5:1)

#### TRANSMISSION

● New Process 435; 4 speed manual floor shift; Synchronesh on 2, 3, 4;

● Ratios 6.69; 3.34; 1.79; 1.00:1

Reverse 8.26:1; ● 6 bolt SAE pattern PTO opening RH side

#### WHEELS

● 15 x 6 pressed steel; 5 stud;

5 supplied

#### TYRES

● P235/75R—15 (EL) radial tubeless

— 5 supplied

● Spare wheel carrier: Under rear fuel tank

#### CAB

● Features: ● All steel construction; Full panel polypropylene inner splash panels; ● Full width folding adjustable bench seat; Inertia reel seat belts RH and LH Static centre lap seat belt;

● Tinted-Band, laminated windscreen;

● Full width rubber floor mat; Full width padded sun visors; ● Fresh air ventilation and three speed heater demister; ● AM/FM P.B. radio;

● Ashtray and integral cigar lighter;

● Lockable glove box; ● Coat hook;

● Prismatic interior rear view mirror;

● Interior door release; ● Headlining and moulded retainers including full length "B" pillar moulding; ● Bright door trim moulding; ● Lowline swinglock R/V exterior rear view mirrors

● Passenger grab handle

Styleside Features: ● Inner and outer skin construction to resist damage; Galvanised side panels for rust protection; Polypropylene splash shields; Curved wall to floor transition to resist dirt and rust catching areas; ● Quickly detachable tailgate with single hand opening operation; ● Provision for stake body extensions; ● Cab and Styleside body finish: Electrocoat undercoating process with baked enamel finish;

● Rear wheel mudflaps

#### XLT STYLESIDE MODEL

● AM/FM stereo cassette radio; ● Full length deep pile carpeting; Cloth seat trim; ● Digital clock; ● Dual horn;

● Woodgrained instrument panel; ● Carpeted door stowage bin; ● Black grille and headlamps surround; ● Front bumper overriders; ● Rear step bumper

● White tonneau cover; ● Rear wheel mudflaps; ● Full width brushed aluminium tailgate applique; ● Double door seal; ● XLT Badge on front fenders; ● Turbine style wheel cover;

● Lower bodyside moulding; ● Rope cleats

#### OPTIONAL EQUIPMENT

Automatic Transmission: Not available on LWB Chassis Cab ● Ford C6

3-speed automatic with torque converter; Ratios 2.46; 1.46; 1.00:1;

Reverse 2.18:1; Steering column change with illuminated quadrant

Appearance Equipment: ● Victoria tone paint treatment (XLT model only) including Accent Tape Stripes

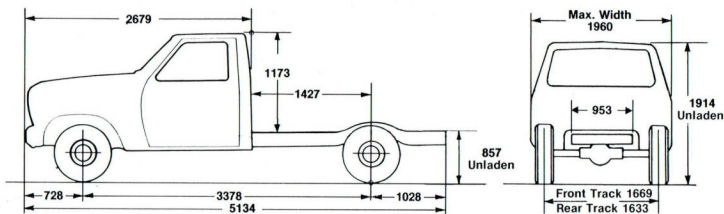
Convenience Equipment: ● Air conditioning

*†Actual engine flywheel power has been derived from test procedure DIN 70020. As there can be variations in the performance ratings of individual units, the above ratings must be taken as being approximate only. (See notes on reverse side hereof.)*

**F-350  
Chassis Cab  
1985 M.Y.**

# F-SERIES 4x4

## CHASSIS-CAB MODEL



## DIMENSIONAL DATA

### Dimensions — Minimum Equipment — mm

3378 WB Chassis Cab

Turning Dia\*

15.7 m

\*Kerb to kerb

## MASS DATA

### Kerb Mass — Minimum Equipment — kg\*

	Front	Rear	Total
3378 WB Chassis-Cab Manual Transmission	1247.5	815.5	2063

\*Kerb Mass includes all fluids, full fuel, less driver and passenger. Kerb masses are calculated and subject to variation.

## BODY DATA

### Body, Payload and Occupant Capacity\* — Minimum Equipment — kg

3378 WB Chassis-Cab	2061
---------------------	------

### Recommended Body Dimensions mm (Subject to State Regulations)

3378 WB Chassis-Cab — Length O/A 2950 × Width O/A 2100
--

\*Recommended Min. Payload 114 kg

## PLEASE NOTE:

■ 1. This specification sheet contains a general description only of the Ford Product referred to on the sheet, its specifications and features and the optional equipment which is currently available for use on or in connection with such product. Generally the optional equipment referred to is available at extra or variable cost. Certain optional equipment can only be used or ordered in combination with other optional equipment. ■ 2. The illustrations, information and specifications presented and referred to in this specification sheet were correct at the time when the specification sheet was approved for printing. However, Ford Motor Company of Australia Limited and/or Ford Sales Company of Australia Limited reserve(s) the right, subject to the laws of Australia and/or any applicable State or Territory thereof and/or the regulations of any competent Authority which may apply from time to time, at their or its discretion at any time and without prior notice to discontinue or change the models, features, specifications, designs and prices of the product referred to in this sheet and any optional equipment therefor without incurring any liability whatsoever to any purchaser or prospective purchaser of any of such products. ■ 3. All capacities, measurements, dimensions and weights quoted in this specification sheet are approximate only. ■ 4. Because of the possibility of changes in models and the information, specifications, features, standard equipment and optional equipment of or for the product referred to in this specification sheet a prospective purchaser is strongly advised to consult an Authorised Ford Dealer for the latest information on models, specifications, features, standard equipment, optional equipment, prices and availability before placing an order. ■ 5. From time to time deliveries are delayed by causes outside the reasonable control of Ford Motor Company of Australia Limited, Ford Sales Company of Australia Limited or their Authorised Ford Dealers. When an order has been placed, please keep in touch with your Authorised Ford Dealer.



# F-350 Chassis Cab 1985 M.Y.

# F-SERIES 4x4

## F-350 4x4: MASS—LOAD RATINGS

Gross Vehicle Mass, Gross Combination Mass, and Ground Ratings (kg)

<b>GVM — PLATED</b>	4127
<b>GCM — PLATED</b>	*6800
<b>Front Axle</b>	2086
<b>Front Tyres</b>	2876 (9.50R16.5E [TT])
<b>Front Suspension @ Ground</b>	1746
<b>FRONT RATING</b>	1746
<b>Rear Axle</b>	2835
<b>Rear Tyres</b>	2876 (9.50R16.5E [TT])
<b>Rear Suspension @ Ground</b>	3607
<b>REAR RATING</b>	2835

\*ABOVE TABLE SHOWS MINIMUM EQUIPMENT REQUIRED FOR PLATED GVM/GCM

### AXLE FRONT

- Dana 50IFS Twin Traction Beam Independent Front Suspension;
- Ratio 4.1:1; ● Capacity 2086 kg
- Fitted with manual free wheel hubs

### AXLE REAR

- Dana 61.HD, full floating, hypoid type 4.1 ratio; 248 mm pitch diameter ring gear; Limited slip differential ● Capacity 2835kg

### BRAKES

- **Service:** Dual line power assisted hydraulic; ● **Front:** Dual piston floating caliper, ventilated disc;
- **Rear:** Duo-servo drum with automatic adjusters; ● **Size:**
- **Front:** 316 mm diameter discs; **Swept area:** 1558 cm<sup>2</sup>; **Rear:** 305 x 76 mm; **Lining area:** 951 cm<sup>2</sup>;
- **Power assistance unit:** Direct acting tandem diaphragm vacuum booster; 280 mm diameter; ● **Park Brake:** Foot operated, variable ratio, cable actuation of rear brakes, with hand operated release

### CHASSIS

- Pressed steel; Ladder type Section 179.1 x 56.1 x 5.1 mm;
- Section modulus 70.9 cm<sup>3</sup>

### CLUTCH

- Single Plate dry clutch of 280 mm diameter; Diaphragm spring pressure plate; Hydraulic actuation;
- Total facing area 798 cm<sup>2</sup>

### DRIVELINE

- 1330 Series

### ELECTRICAL

- 12 Volt negative earth system; Battery 12 V 53 amp hour capacity; Alternator 55 amp capacity;
- Headlamps rectangular halogen with integral parking lamps; Front turn signal lamps; Side turn signal repeater lamps plus reflectors; Rear combination stop-tail-turn signal backup-lamps with integral rear reflectors; ● Single horn; ● Two speed windshield wipers with intermittent setting; Windscreen washers; ● Interior courtesy lamp actuated by doors and lighting switch

- Instruments — Speedometer-odometer, Tachometer, Ammeter gauge, Oil pressure gauge; Fuel gauge; Water temperature gauge;
- Warning lights for — Alternator charge; High beam; Brake circuit fail; Direction indicator; Park brake, 4 x 4 Lock

### ENGINE

- Ford 5.0 litre EFI V8 (unleaded petrol);
- †Nett power at specified RPM 126 KW @ 4000;
- †Nett torque at specified RPM 358 Nm @ 2500
- **Specification:** ● Type 8-cyl, 90° Vee, Overhead Valve;
- Displacement (litres) 5.0; ● Bore and Stroke (Inches) 4.00 x 3.00;
- Compression Ratio (to 1) 9.0;
- Main Bearings 5; ● Valve Lifters hydraulic; ● Fuel Injection System multi-port; ● Fuel unleaded;
- Ignition electronic; ● Exhaust single

- **Features:** ● Eight-port synchronous single-fire strategy fuel injection system; ● New intake air system with remote engine mounted air cleaner assembly; ● Modern, lightweight cylinder block; ● EEC-IV electronic engine controls; ● Speed-density air flow measurement system; ● Reduced back-pressure exhaust system; ● Self-adjusting hydraulic valve lifters; ● Five steel-backed copper-lead main bearings; ● Positive rotators on exhaust valves; ● Uses unleaded fuel

### FUEL SYSTEM

- 72 litre fuel tank mid-frame mounted and 72 litre aft of axle fuel tank; Total capacity 144 litres

### FRONT SUSPENSION

- Leaf springs with heavy duty freon filled telescopic double-acting shock absorbers and stabiliser bar

### REAR SUSPENSION

- Semi elliptic, with single leaf auxiliary springs and stabiliser bar;
- Heavy duty freon filled telescopic double-acting shock absorbers

### STEERING

- Bendix Power Assisted Variable Ratio, Ratio 11-17.5:1

### TRANSMISSION

- New Process 435; 4 speed manual with synchromesh on 2, 3, 4 gears; Floor shift; Ratios 6.69; 3.34; 1.79; 1.00:1; Reverse 8.26:1; ● 3.6 bolt SAE pattern power take-off opening at RH side

- **Transfer Case:** ● B.W. 1345; Two speed; ● Ratios 2.74 & 1.00:1

### WHEELS

- 16.5 x 6.75 8 hole disc; 5 supplied

### TYRES

- 9.5R16.5E (TT) (10PR Radials); 5 supplied

- **Spare wheel carrier:** Under frame at the rear

### CAB

- **Features:** ● All steel construction; Full panel polypropylene inner splash panels;
- Full width folding adjustable bench seat; Inertia reel seat belts RH and LH; ● Static centre lap seat belt;
- Laminated windscreen;
- Full width rubber floor mat; Two sun visors; ● Fresh air ventilation and three speed heater demister;
- Ash tray with integral cigar lighter; ● Lockable glove box;
- Two lowline swinglock rear vision mirrors; ● Coat hook; Electrocoat undercoating process; Baked enamel finish; ● Internal hood release; ● Headlining and moulded retainers incl full length "B" pillar moulding, bright door trim moulding; ● AM/FM P.B. Radio ● Passenger grab handle

### OPTIONAL EQUIPMENT

- Convenience Equipment: ● Air conditioning

†Actual engine flywheel power has been derived from test procedure DIN 70020. As there can be variations in the performance ratings of individual units, the above ratings must be taken as being approximate only. (See notes on reverse side hereof.)