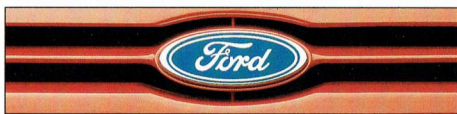


Ford Laser TX3.



Have you driven a Ford... lately? 



One look at the Laser TX3, and you can tell who it's built for.

It's for those who can't wait. Who want

to get out and live life.

And who want a car which excites them as much as the life they lead.

For them, the car is TX3. High tech. High levels of excitement.

Walk around the outside. The style tells

the world that you intend to move.

Look under the bonnet. The 1.8 litre DOHC 16 valve E.F.I. engine promises performance beyond the ordinary.

And if you want even more excitement, the TX3 Turbo 4WD is the machine for you.

Reach under the rear spoiler and open the hatch.

You'll find it's roomier than ever. Enough space to take a heap of gear.

But there's more. The real thrill starts when you take the wheel.

From the minute you sit in the driver's seat, you'll notice some very comforting features.

Underneath the stylish, cloth-faced seat there is a dual density foam which is firm, yet flexible, to conform to the shape of your back.

The driver's seat can be adjusted in four different ways to assist each driver to find the most comfortable seating position.

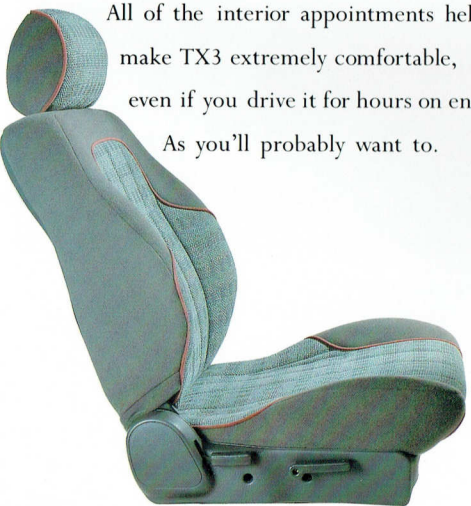
The steering column tilts for driver comfort and there's a footrest beside the clutch pedal for longer trips.

Closer inspection of TX3 reveals a number of handy little touches.

Like the remote hatch and fuel filler release. A "headlights - on" warning. Maplights. A rear window washer and wiper. A digital clock. And power operated exterior rear view mirrors.

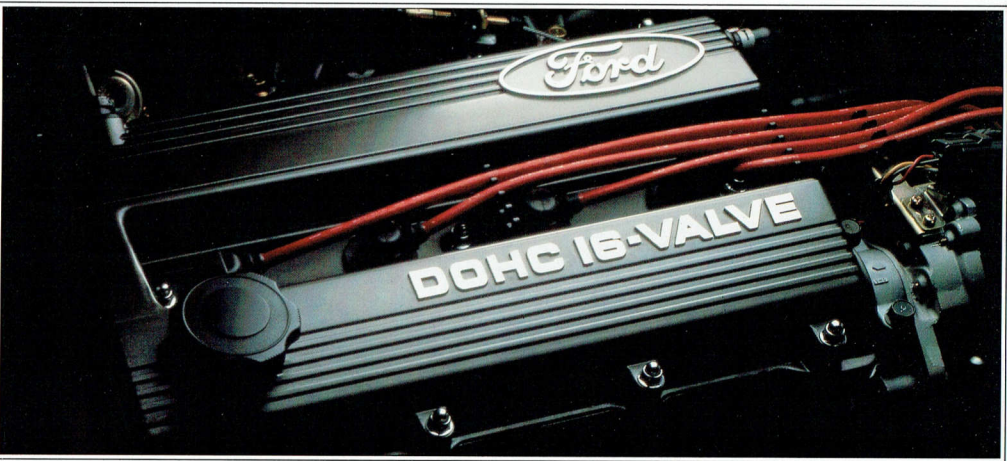
All of the interior appointments help make TX3 extremely comfortable, even if you drive it for hours on end.

As you'll probably want to.



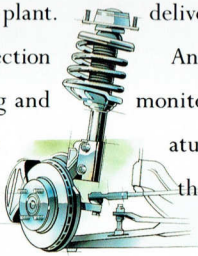
Four way adjustable driver's seat.





Undoubtedly, the most exciting part of TX3 is its new 1.8 litre 16 valve electronic fuel injected double overhead cam power plant.

Multi-point electronic fuel injection means easy starting and smooth running and it gives precise fuel metering over the entire rev range to help provide excellent fuel economy.



Each TX3 comes equipped with a double overhead camshaft, which helps to deliver impressive power and torque.

An 8-bit digital microprocessor monitors air temperature, coolant temperature and the rate of combustion. It then adjusts the fuel mixture to help ensure the right amount of fuel is

admitted through the injectors.

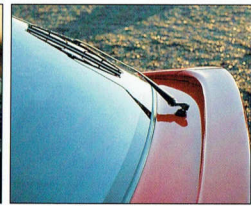
The cylinder head contains sixteen valves, four for each cylinder.

The smooth shifting 5 speed manual transmission is light and precise.

Power steering is standard and helps provide a precise feel. The sports tuned suspension features firm spring and damper settings for sure-footed handling. It gives



Adjustable steering.



Rear washer/wiper.



Rear hatch with spoiler and stoplight.

you accurate cornering on varying road surfaces. And four wheel disc brakes help bring you to a sure-footed stop.

Not that you'll want to stop for long. Like all Lasers, the TX3 is

immensely practical.

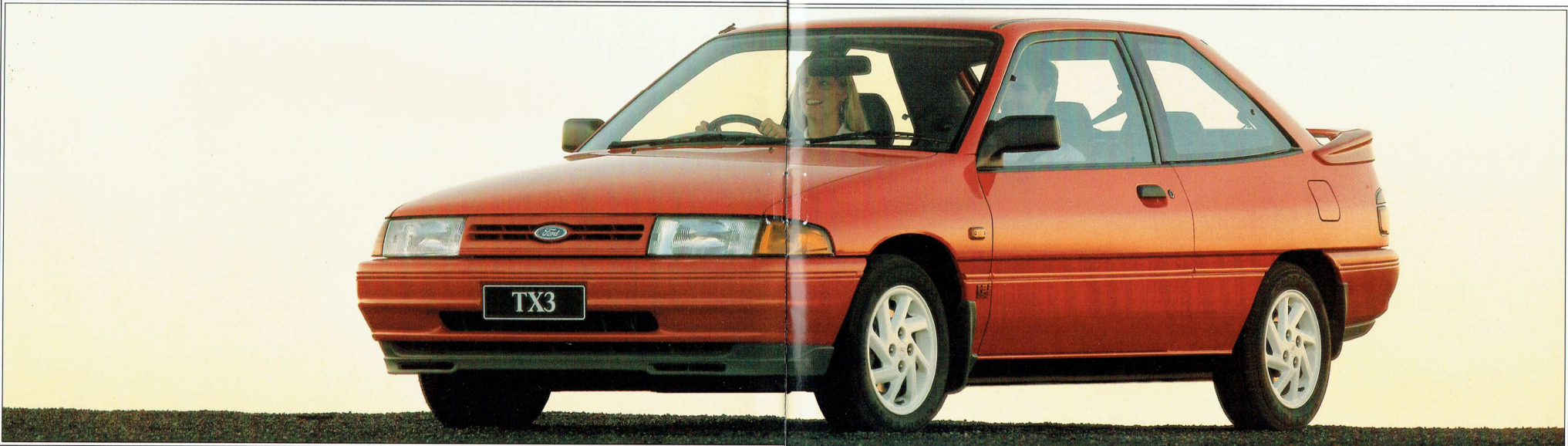
The 60/40 fold-down rear seat back rest means the car can carry generous amounts of luggage. With one side folded, TX3 can accommodate several pairs of skis, and still carry a rear-seat passenger in comfort.

Rear seat passengers will also appreciate heating outlets in the rear footwells.

To aid visibility, there are demister

outlets for side windows.

Instrumentation is comprehensive and easy to read. It includes an electronic analogue speedometer, tachometer, temperature and fuel gauges.





LASER & TX3 COLOUR RANGE

HATCH

SEDAN

TX3

TX3 TURBO 4WD

Gloss



Stark White



Monza Red



Mushroom



Capricorn Blue

Prestige

(Available at extra cost on L, GL & S models)



Ice Blue



Black Emerald



Rich Plum



Platinum



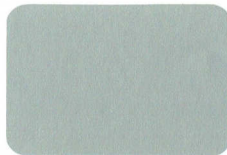
Indigo Blue

TX3 & TX3 Turbo 4WD

(Unique Colours)



Aspen White



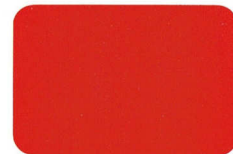
Silver Sheen



Slate Blue



Velvet Black



Le Mans Red

COLOUR AND TRIM COMBINATIONS

INTERIOR COLOUR \ EXTERIOR COLOUR	LASER L	LASER GL				LASER S	LASER GHIA			TX3	TX3 4WD
	Silver Birch	Blue Gum (b)	Silver Birch	Iron Bark	Iron Bark	Blue Gum (b)	Silver Birch	Iron Bark	Iron Bark	Iron Bark	
GLOSS RANGE											
STARK WHITE	✓	O	O	✓	✓	O	O	✓			
MONZA RED	✓		O	✓	✓		O	✓			
MUSHROOM	✓		✓								
CAPRICORN BLUE		✓		✓	✓						
PRESTIGE RANGE (a)											
ICE BLUE - MET		✓		O		✓		O			
BLACK EMERALD - MET			O	✓	✓		O	✓			
RICH PLUM			O	✓	✓		O	✓			
PLATINUM - MET					✓	O		✓			
INDIGO BLUE - MET		✓		O		✓		O			
ASPEN WHITE									✓	✓	
SILVER SHEEN									✓	✓	
VELVET BLACK									✓	✓	
SLATE BLUE									✓	✓	
LE MANS RED									✓	✓	

O = Available combination.

✓ = Recommended combination.

(a) = Available on Laser L, GL and S at extra cost and on Laser Ghia and TX3 at no extra cost.

(b) = Blue Gum trim is only available on Laser Hatchback.

Interior Trim: Laser L & GL - Basketweave Cloth
 Laser S - Basketweave Cloth and Warp Knit
 Laser Ghia - Panache Velour
 TX3 - Pizzaz Chenille and Velvet Warp Knit
 TX3 4WD - Pizzaz Chenille and Velvet Warp Knit

PLEASE NOTE: The paints, colours, trims, combinations and information described depicted and referred to in this selector are to be used only as a general guide in the selection of a vehicle. Vehicle paint colours will differ in varying degrees from those depicted herein.

Ford Motor Company of Australia Limited reserves the right at any time and without notice to discontinue or change the specifications descriptions colours and designs of the paints, colours, trims and combinations thereof as described and referred to herein, to add or delete any paint colour, trim or combination thereof to or from the range described or referred to herein and to temporarily suspend or restrict the use of any paint colour, trim or combination thereof listed or referred to herein without incurring any liability whatsoever for so doing.

Always consult your Authorised Ford Dealer for the latest information on and the availability of paints, colours, trims and combinations before deciding to place an order for a vehicle.

PRINTED DECEMBER 1990



Real enthusiasts can order the 1.8 litre, fuel injected, turbo charged 16 valve double overhead cam TX3 with full time four wheel drive. This TX3 has a potent power plant

designed to deliver 117 Kw of power at 6500 rpm and 206 Nm torque at 3000 rpm.

Full time four wheel drive gives the TX3 turbo exceptional stability and roadholding.

TX3 and TX3 Turbo 4WD. Machines for those who want to live life in the fast lane.



All Ford vehicles sold throughout Australia are backed by Fordcare after sales service. Fordcare is comprised of a number of individual service products designed exclusively for Ford vehicles and their drivers. These include technical support back-up, diagnostic equipment, approved Ford/Motorcraft replacement parts and parts and service warranties.



This brochure is designed to provide you with a general introduction to the Ford Products (including available optional equipment) referred to, and should be read in conjunction with the latest specification sheet. Because of changes in conditions and circumstances Ford* reserves the right, subject to all applicable laws, at any time, at its discretion, and without notice to discontinue or change the features, designs, materials, colours and other specifications and the prices of its products, and to either permanently or temporarily withdraw any such products from the market without incurring any liability to any prospective purchaser or purchaser.

The latest specifications sheet should be referred to for information on the availability, ordering and use of optional equipment. Always consult an Authorised Ford Dealer for the latest information with respect to features, specifications, prices, optional equipment and availability before deciding to place an order.

*FORD MOTOR COMPANY OF AUSTRALIA LIMITED. (Incorporated in Victoria.) Registered Office: 1735 Sydney Road, Campbellfield, Victoria 3061.

Your Ford Dealer is:

Printed in March 1990.

Have you driven a Ford... lately?

