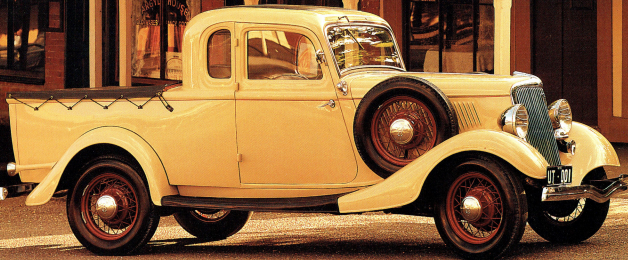


**60 YEARS AGO FORD AUSTRALIA BUILT THE WORLD'S NO.1 UTE.**



**FUNNY HOW HISTORY REPEATS ITSELF.**



## **THE SPECIAL EDITION 60TH ANNIVERSARY FALCON UTE.**



60 years ago Ford Australia invented the world's first Coupé Utility. And a limited number of Australian ute buyers now have special reason to celebrate – and the chance to secure a piece of Australian automotive history.

Because Ford has released a limited edition Falcon Longreach ute to commemorate the production of the very first ute back in 1934.

It's a Longreach ute like no other.

The body styling has plenty of street smart touches - like body colour side mirrors and bumpers; road-ready 14 inch alloy wheels; a bull bar for extra protection; a choice of Dynamic White, Le Mans Red, Polynesian Green and Argon Silver body colours.

Ford. Winner Australian Quality Award 1993.

A distinctive 60th Anniversary decal also says that this Longreach ute is very special.

You've always wanted a plush office, right? Inside the



*Cloth trim and carpeted floor standard.*

60th Anniversary ute you get it. Carpet on the floor and full instrumentation, including tachometer, to keep your finger on the pulse of this magnificent ute. These features are above



and beyond all the standard Longreach equipment. You get security-coded stereo radio/cassette, Smartlock security system, 4-wheel disc brakes, smart cloth trim, power steering, tilt adjustable steering wheel,\* driver's seat lumbar support\* and a tonneau cover.

With Falcon's much acclaimed 4.0 litre Multipoint EFI



*Body colour side mirrors standard.*



*Strong bull bar standard.*



*14 inch alloy wheels standard.*



*Body colour bumpers standard.*

6-cylinder engine under the bonnet, the 60th Anniversary Longreach delivers almost 200 horsepower (148 kW).

Team the engine with either 4-speed auto or 5-speed manual transmission and you have a combination that'll take the ute's impressive 820 kg load capacity in its stride. And if you need to tow, you can – up to 2300 kg\* in fact. The limited edition 60th



Anniversary Falcon Longreach is a rare opportunity to pick up an exceptional ute plus a piece of Australian automotive history.

Come and drive one soon.



**HAVE YOU DRIVEN A FORD...LATELY?**

This brochure is designed to provide you with a general introduction to the Ford Products (including available optional equipment) referred to, and should be read in conjunction with the latest specification sheet. Because of changes in conditions and circumstances Ford\* reserves the right, subject to all applicable laws, at any time, at its discretion, and without notice, to discontinue or change the features, designs, materials, colours and other specifications and the prices of their products, and to either permanently or temporarily withdraw any such products from the market without incurring any liability to any prospective purchaser or purchaser. The latest specification sheet should be referred to for information on the availability, ordering and use of optional equipment. Always consult an Authorised Ford Dealer for the latest information with respect to features, specifications, prices, optional equipment and availability before deciding to place an order. \*FORD MOTOR COMPANY OF AUSTRALIA LIMITED. (A.C.N. 004 116 223) Registered Office: 1735 Sydney Road, Campbellfield, Victoria 3061, Australia. Printed in February 1994.

\*Floor transmission only.

\*Subject to state and territory regulations.