



EXPLORER



Introducing the 4WD that thinks.

Until now, the 4WD concept has been locked in a kind of technological time warp. Ground-breaking Explorer revolutionises it, computerises it, civilises it.

On-road or off-road you don't miss a beat. Because as the terrain changes, V6 Explorer's advanced Control Trac 4WD system with TPS (Throttle Position Sensing) is designed to instantly and automatically adjust the amount of front and rear wheel power as needed.

Now if you think that's smart, you're right. The advanced Ford Control Trac 4WD system is a good reason to check the IQ of any 4WD you're thinking about buying. We can save you the trouble. The fact is there isn't another 4WD around that's as intelligent as the Ford Explorer. So, as you consider all the interesting and adventurous opportunities a 4WD will open up, come and take a good, close look at the 4WD that thinks.



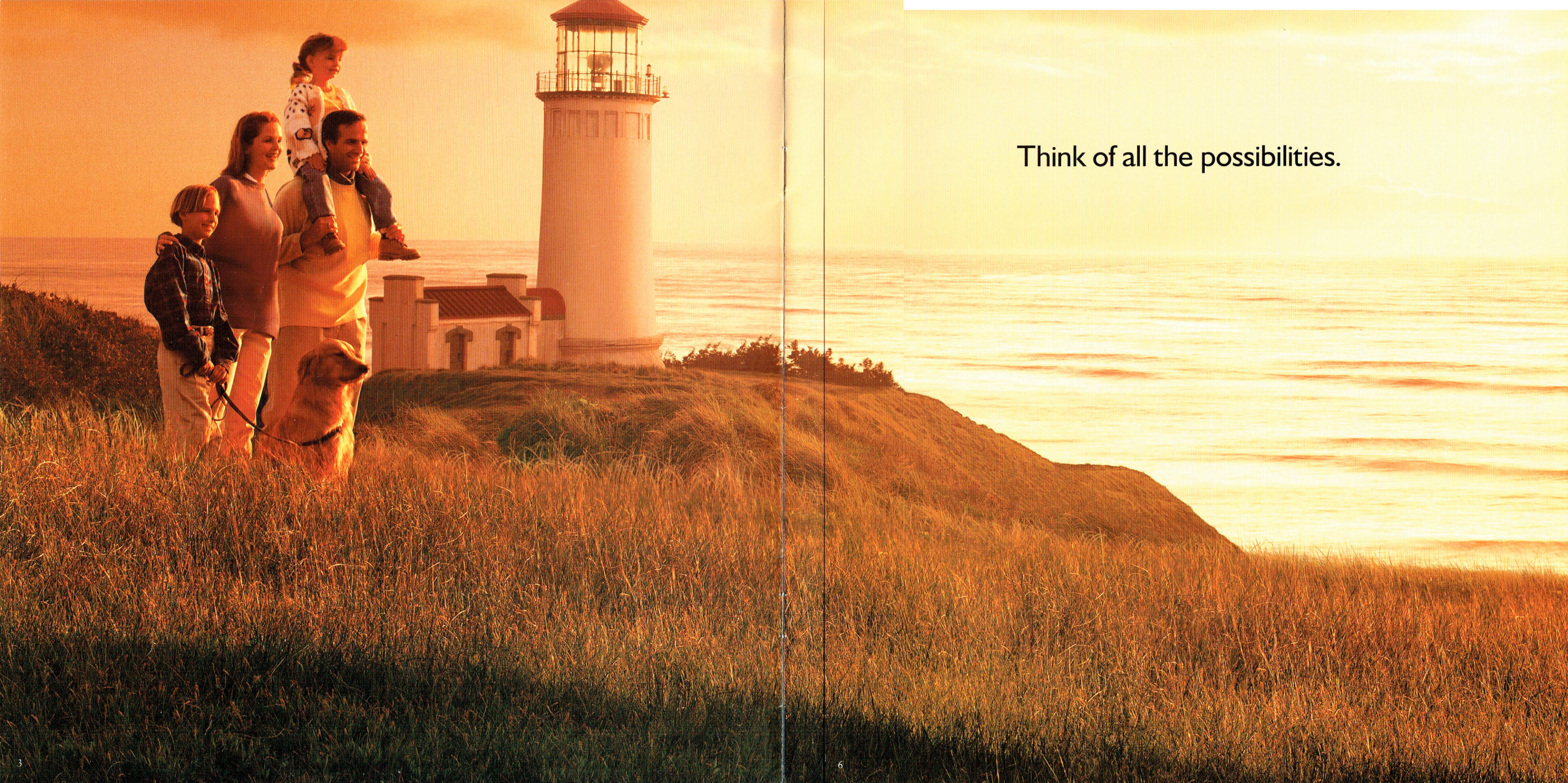
EXPLORER. THE INTELLIGENT 4WD.



Explorer Limited shown in Charcoal Green.



Explorer XLT shown in Toreador Red.



Think of all the possibilities.

It's so intelligently engineered.

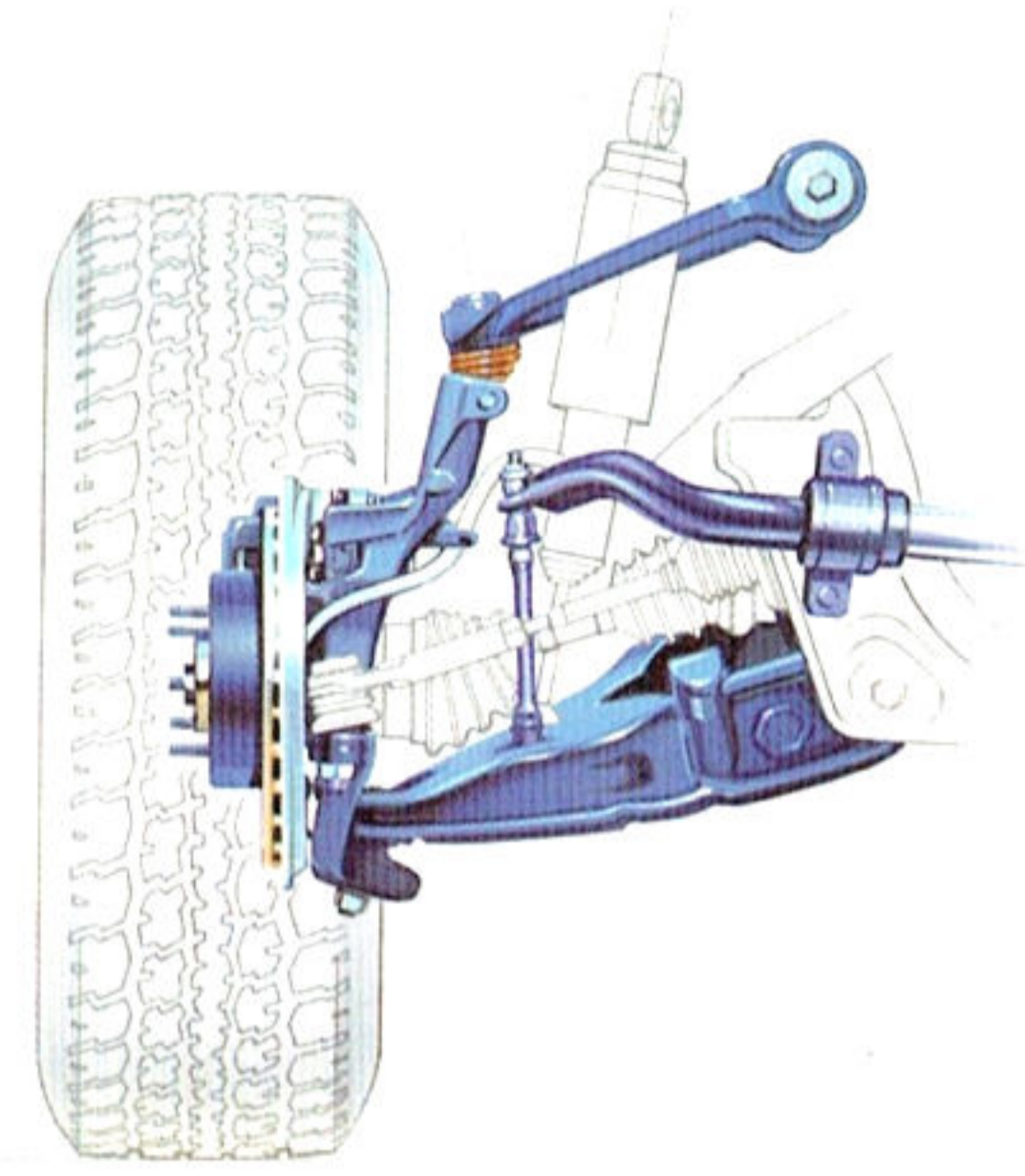
Part-time 4WD or full-time 4WD? Explorer's Control Trac 4WD system gives you the best of both worlds.

In normal conditions, most of the power is delivered to the rear wheels. The instant Control Trac's electronic sensors detect wheel slip, Explorer transfers more power to the wheels that are gripping. In addition, Throttle Position Sensing (TPS) reads the position of the accelerator pedal and controls the front-to-rear power split as the pedal is depressed.

Control Trac can make the difference between getting bogged or not. Often, in a part-time 4WD vehicle, by the time the driver reacts and engages 4WD it's too late.

If needed, you can switch to "4WD HIGH", with a minimum 34% of torque being distributed to the front, automatically increasing to 100% as required. For extremely challenging conditions, select "4WD LOW".

The Short and Long Arm (SLA) front suspension, with each front wheel suspended by an upper and lower control arm, shock absorber, stabiliser bar and torsion bar, delivers a smooth, car-like ride. Limited slip rear differential is standard on all models.



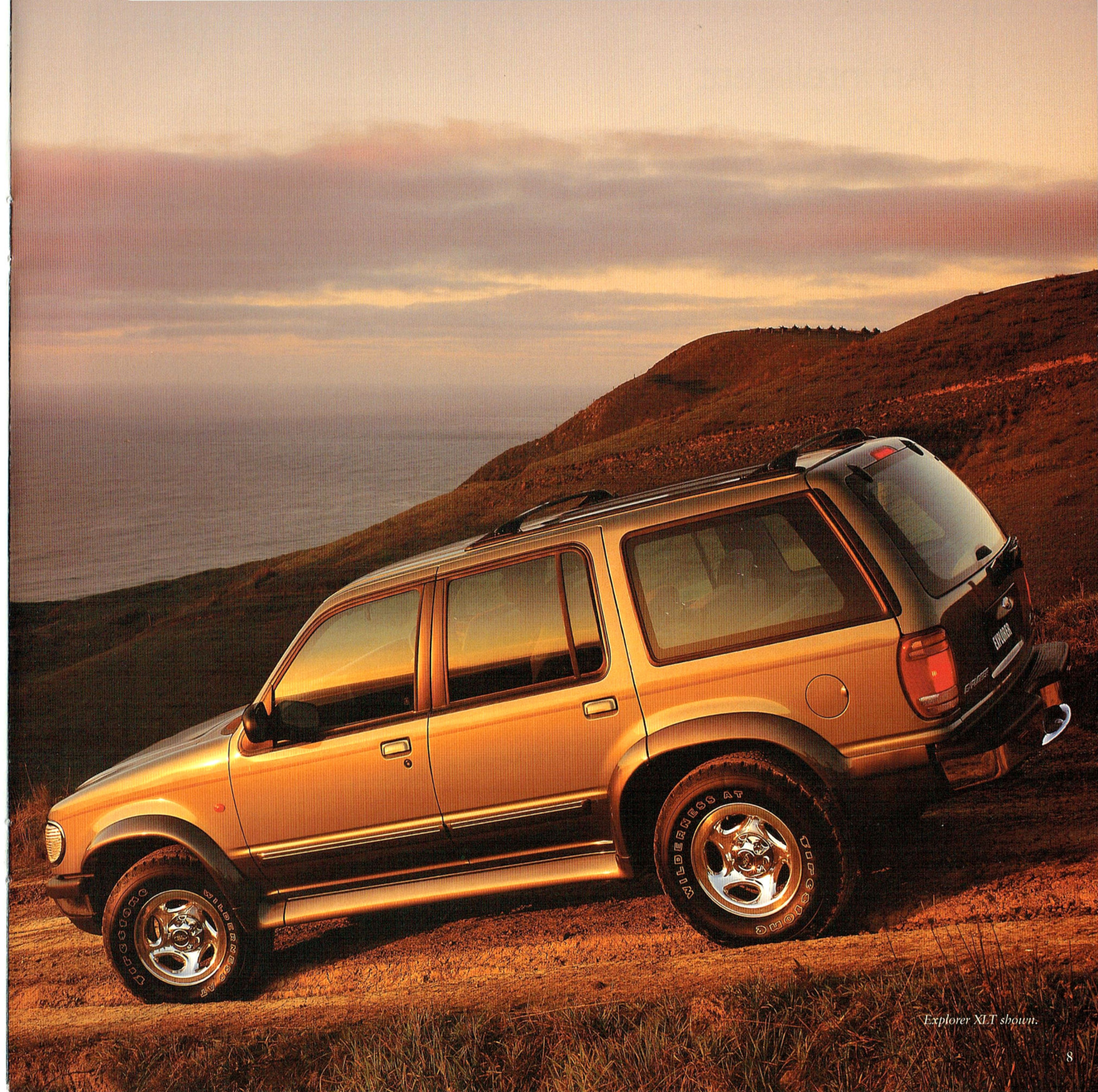
Versatile Control Trac gives you Auto, 4WD High and 4WD Low settings.



Explorer is the only 4WD with an electronic 5-speed automatic transmission (optional on XL, standard on XLT and Limited).



EXPLORER. THE INTELLIGENT 4WD.



Explorer XLT shown.

An intelligent range of models.

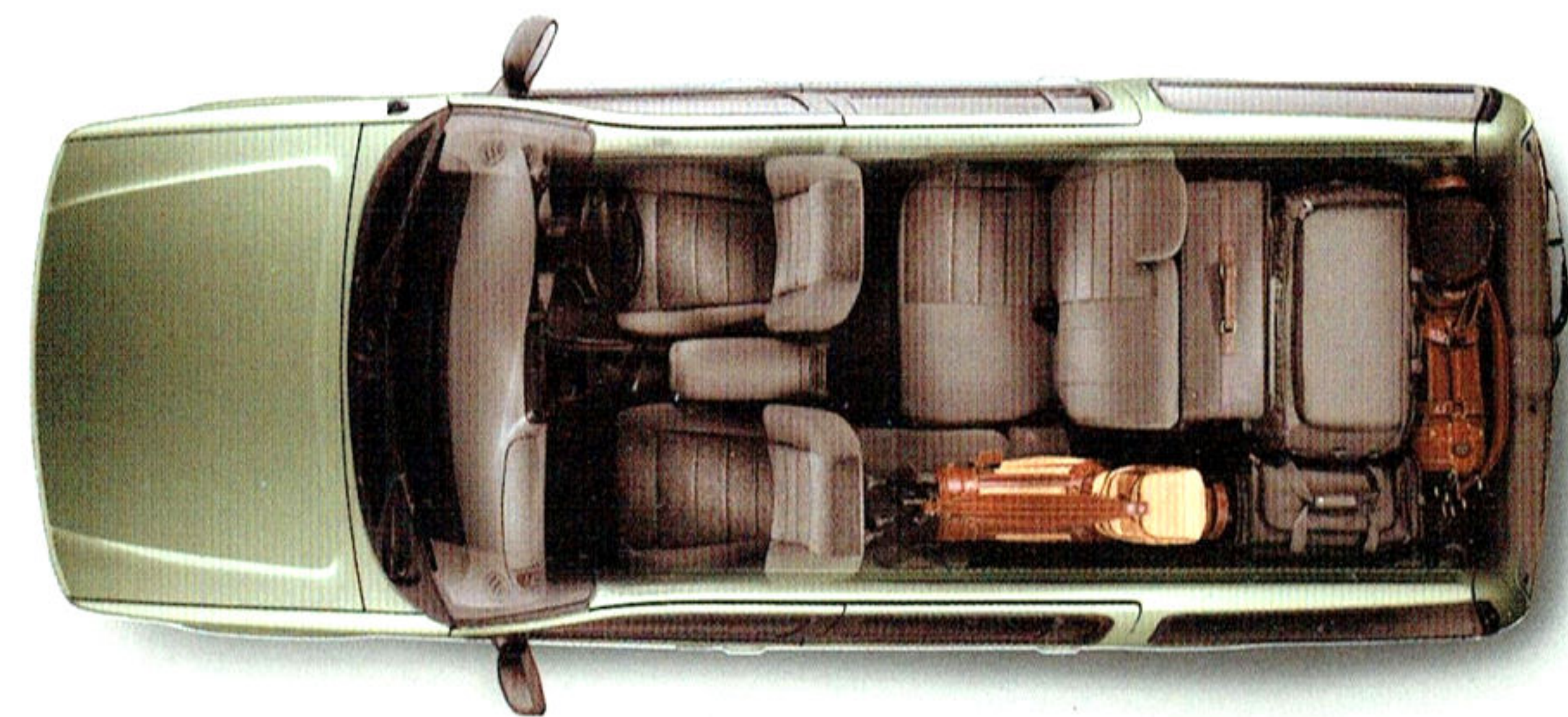
All three Explorer models have a lot in common. Like Ford's amazing Control Trac 4WD system, a powerful 4.0 litre V6 engine, anti-lock braking system (ABS), air conditioning and dual airbags – all standard.

Explorer XL, the most affordable model, delivers a surprisingly high level of features and equipment. Explorer XL gives you power rack and pinion steering, cruise control, tilt adjustable steering wheel with leather rim, premium cloth trim, a great sounding AM/FM stereo radio/cassette (including a rear radio control with auto transmission) and solar tint side and rear glass with a protection rating of UPF 15+.

Moving up to Explorer XLT will give you, in addition: power windows, power door locks, 6-way adjustable power front seats, alloy wheels, power door mirrors and more. However, for the ultimate Explorer...



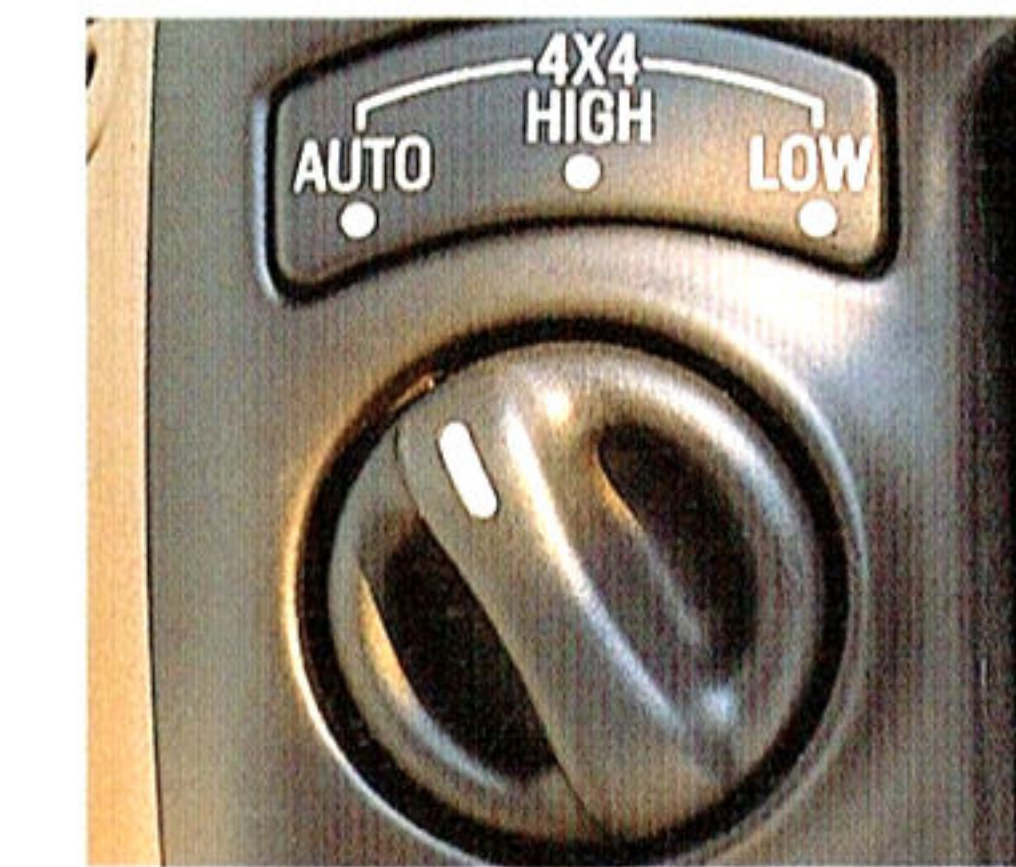
Explorer Limited shown in Charcoal Green.



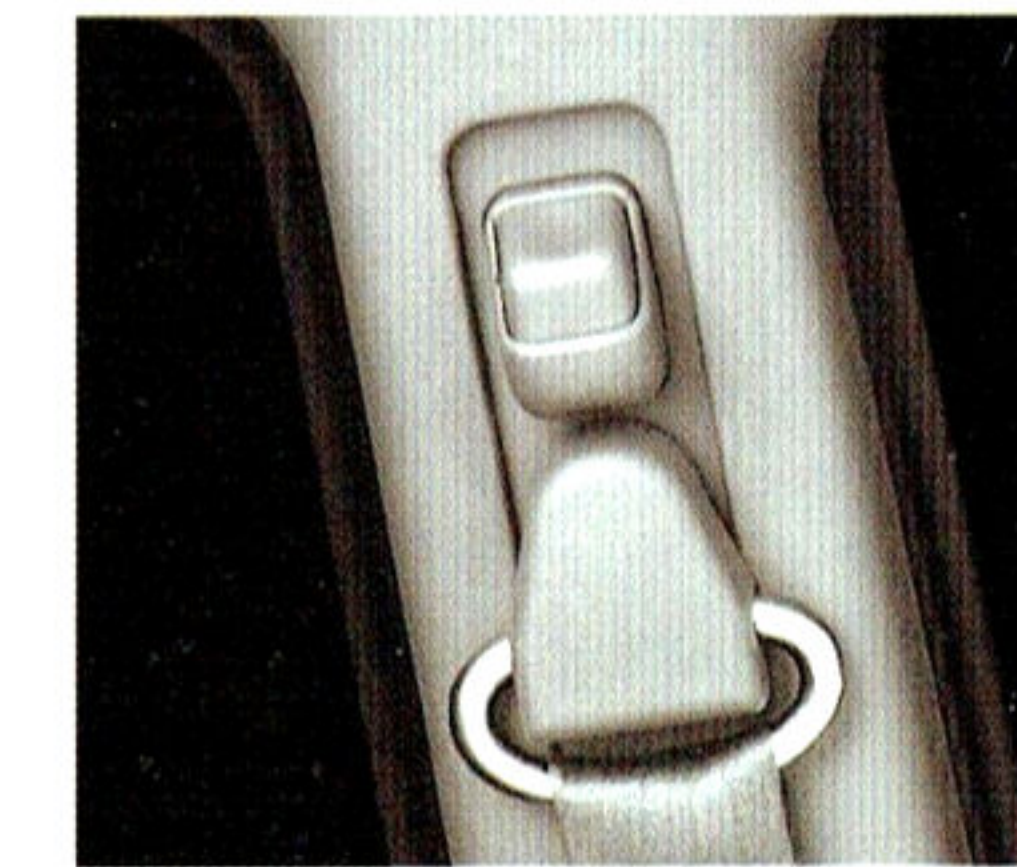
Explorer provides plenty of versatile room for passengers and cargo.



Explorer Limited's standard sunroof with one-touch control.



The switch for Explorer's advanced Control Trac 4WD system.



Height adjustable feature means more comfortable and safer seatbelts.

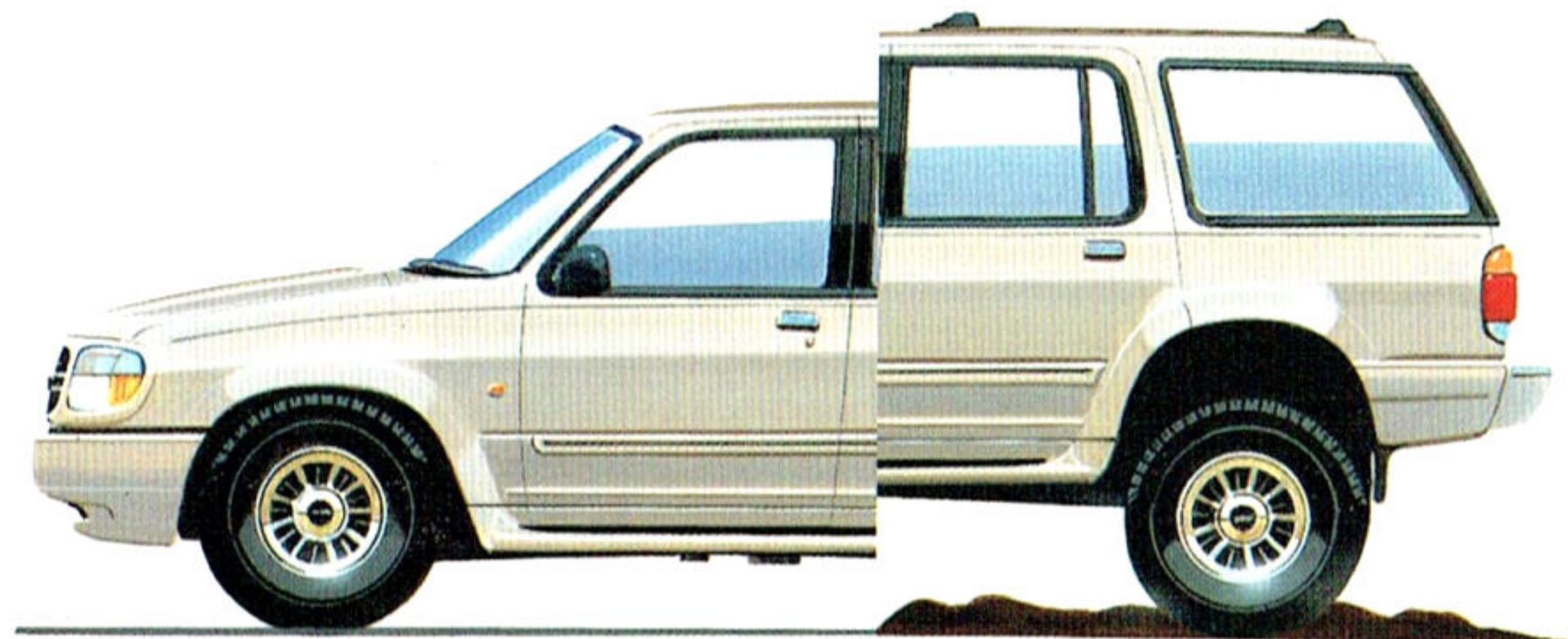


6-stack CD player and automatic climate control. (Limited).

Supreme intelligence.

Explorer Limited combines outstanding off-road capabilities with all the comfort and appointments of a luxury sedan, including leather upholstery, one-touch power sunroof, 6-stack CD player, automatic headlights on/off, 2-position seat memory and automatic climate control.

With Limited's Automatic Ride Control, the ride height is automatically adjusted to speed. At reduced speeds ride height is increased. When on-road or stationary, Explorer sits lower for enhanced ride and control.



The Limited's Automatic Ride Control sets ride height according to vehicle speed and driving conditions. In 4x4 Auto or High modes the ride height is initially at the Curb setting (195mm). At speeds above 88kph it lowers to the Aero position (170mm) to improve economy by reducing drag. For difficult terrain when 4x4 Low is selected, and the speed is below 48kph, the ride height is increased to 220mm.



EXPLORER. THE INTELLIGENT 4WD.



Explorer Limited interior shown.

An intelligent approach to safety and security.

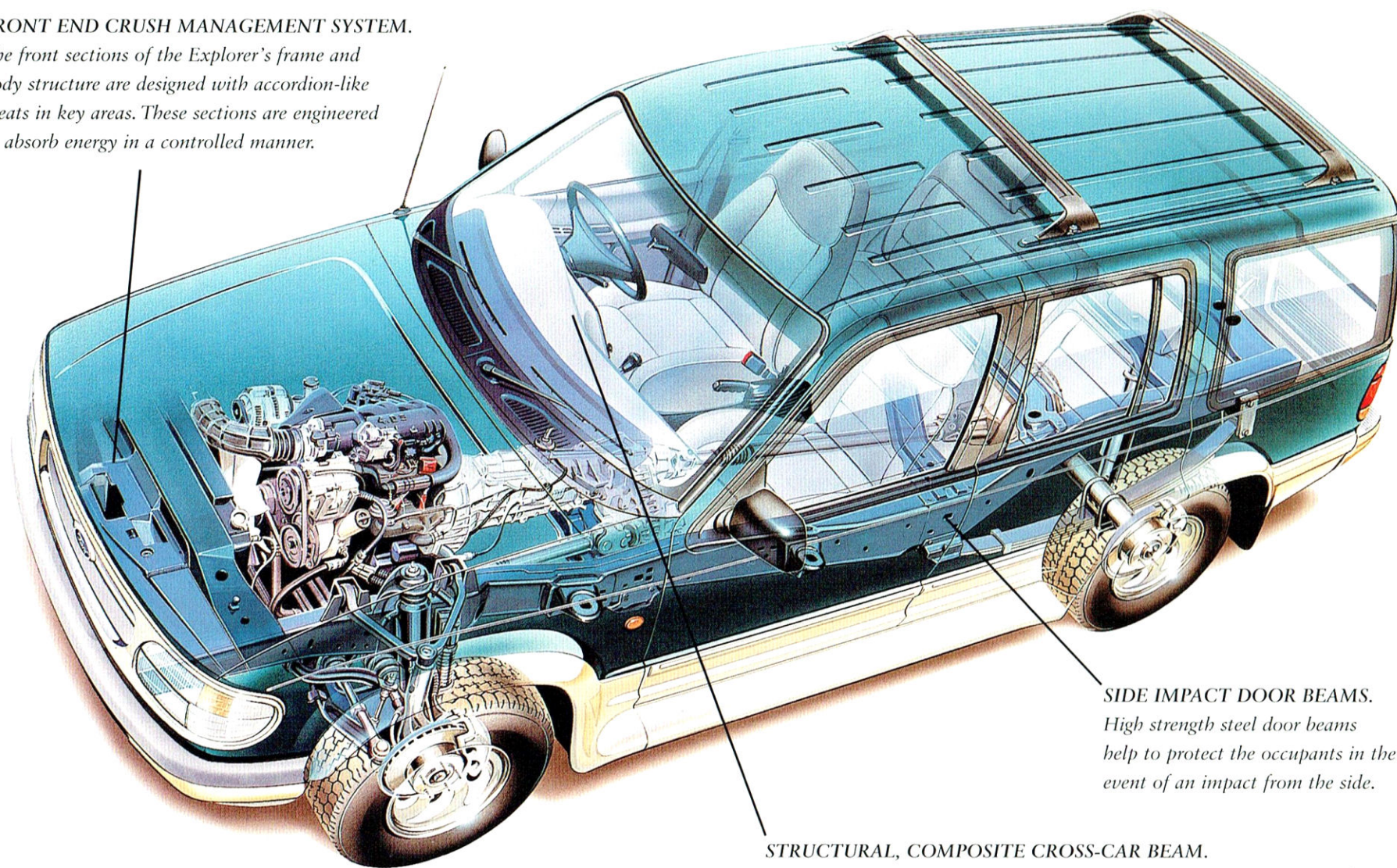
Ford Explorer has a range of advanced safety features that rival those you'd find on a passenger car. Chief among them are Explorer's front-end crush management system, side impact door beams, 4-wheel disc brakes with ABS and

the standard airbags for driver and front passenger.

Engineering initiatives like Control Trac, Automatic Ride Control (Limited only) and Explorer's powerful 4.0 litre engine are also significant contributors to primary safety.

FRONT END CRUSH MANAGEMENT SYSTEM.

The front sections of the Explorer's frame and body structure are designed with accordion-like pleats in key areas. These sections are engineered to absorb energy in a controlled manner.



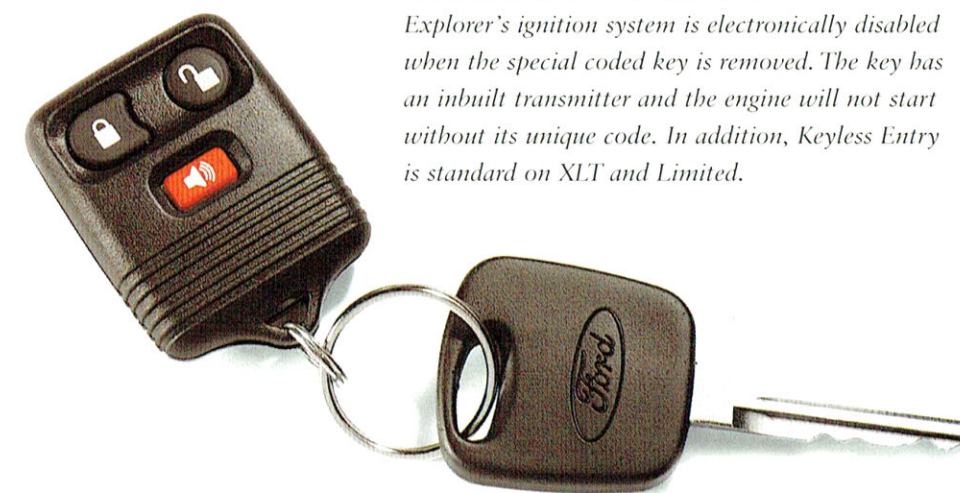
SIDE IMPACT DOOR BEAMS.
High strength steel door beams help to protect the occupants in the event of an impact from the side.

STRUCTURAL, COMPOSITE CROSS-CAR BEAM.
This beam is mounted beneath the instrument panel and extends across the width of the vehicle and is designed to play a key role in absorbing impact energy and contributing to occupant protection.

EXPLORER. THE INTELLIGENT 4WD.

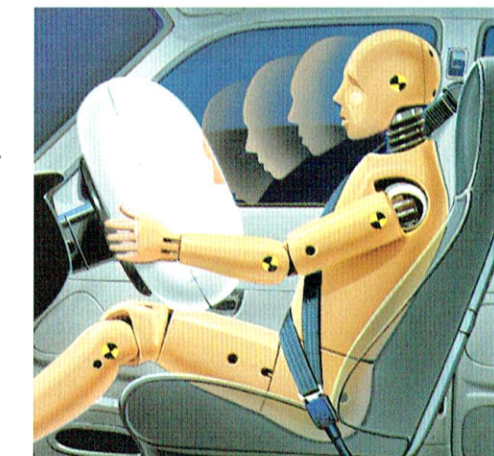
SecuriLock SECURITY SYSTEM.

Explorer's ignition system is electronically disabled when the special coded key is removed. The key has an inbuilt transmitter and the engine will not start without its unique code. In addition, Keyless Entry is standard on XLT and Limited.



THREE-POINT SAFETY BELTS.

All outboard seating positions are equipped with lap/sash seat belts. The rear centre seating position has a lap belt.



DUAL AIRBAGS.

All Explorers are equipped with airbags for both the driver and front passenger. Sensors in the vehicle detect the severity of an impact. If the collision meets the criteria for deployment, the driver and passenger airbags will be activated.



ANTI-LOCK BRAKING SYSTEM (ABS).

The standard Anti-lock Braking System helps you to maintain steering control in most braking circumstances. ABS is also designed to interact with the Control Trac system to improve braking efficiency and maximise traction.



COLOURS



Oxford White – Solid
(XL & XLT. Limited from early 1998)

Campari Red – Solid
(XL & XLT)

Charcoal Green – Metallic
(Limited only)

Evergreen Frost – Metallic
(XL & XLT)

Pacific Green – Metallic
(XL & XLT)

Raven Black – Solid
(XL & XLT)

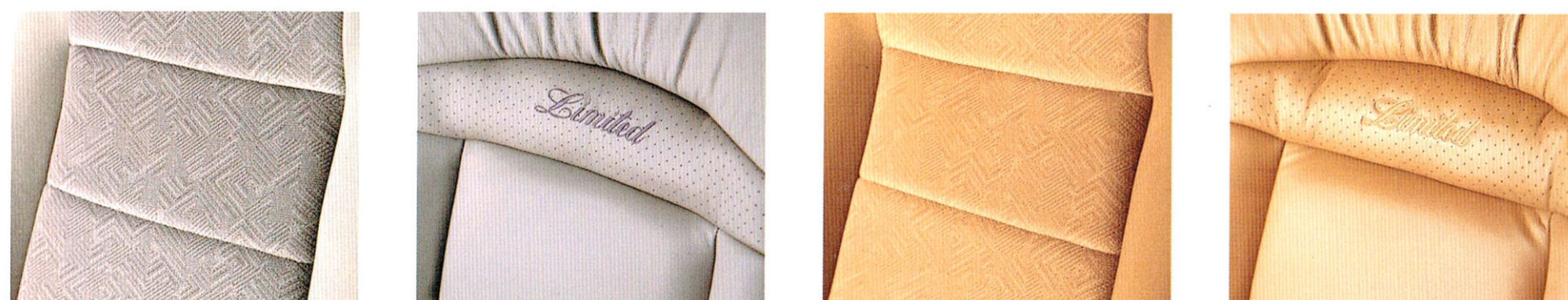
Toreador Red – Metallic
(XL & XLT)

Light Blue Denim – Metallic
(XL & XLT)

Wedgewood Blue – Metallic
(XL & XLT)

Deep Graphite – Metallic
(XL & XLT)

TRIMS



Grey Velour
(XL & XLT)

Grey Leather
(Limited only)

Tan Velour
(XL & XLT)

Tan Leather
(Limited only)

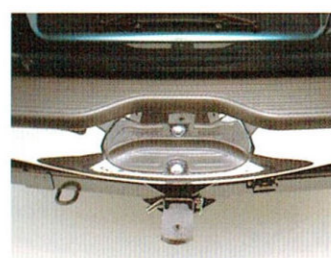
N.B. For detailed colour and trim availability by model, please refer to your Authorised Ford Dealer.

ACCESSORIES

Explorer XL, XLT and Limited are superbly equipped vehicles by any standard. With Ford Approved Accessories, you can add an extra touch of style, protection or convenience.



Heavy duty, plush pile Carpet Mats help protect your Explorer carpet from wear and soiling. Anti-slip backing.



Heavy duty towbar with a towing capacity of 2,380 kg manual and 2,500 kg automatic (subject to State and Territory regulations). Designed to comply with Australian Design Rule (ADR62) specification.



Explorer XL in Pacific Green shown equipped with airbag compatible alloy Bull Bar, Weathershield, Headlamp and Bonnet Protectors.

*Conditions and exclusions apply. See your Authorised Ford Dealer for details.

When Ford Approved Accessories are fitted to your new Explorer prior to vehicle delivery, they are covered by the Ford 3 year/100,000 km 'Bumper to Bumper' warranty*.



Third row seat accommodates two children up to 38kg or 160cm height. Styled and trimmed to match vehicle interior. Conforms to Australian Design Rules. (Not available for Limited.)



6-stack CD changer with fully integrated wiring, tamper-proof screws for security and childproof lock. (Standard on Limited.)

AN OWNERSHIP EXPERIENCE YOU'RE GOING TO LOVE.



Fordcare.

Fordcare is a whole range of programs, products and services designed to make Ford owners the most satisfied motor vehicle owners in Australia.

The well-being of your Ford is supported by these warranties and services:

New Vehicle Warranty.*

Covers your Ford against defects in factory materials or workmanship for the first 3 years or 100,000 km – whichever occurs first. When fitted at or prior to the time of vehicle delivery, Ford Approved Accessories are also covered by the Ford 3 Year/100,000 km 'Bumper to Bumper' Warranty.

Five Year Perforation Corrosion Warranty.*

Covers the original vehicle's body against perforation corrosion for the first five years of its life.

Lifelong Panel Warranty.*

Covers replacement of outer body panels against perforation corrosion for the life of the vehicle.

Ford Customer Assistance Centre.

We're always happy to hear from you and you will find us responsive to your needs. Customer Assistance Centre – Telephone 1800 333 306 (TOLL FREE), in Melbourne Telephone 9359 7023.

Ford Credit Financial Services.

Ford Leasing and Red Carpet Options are available to approved applicants of Ford Credit Australia Limited. Enquire at your Authorised Ford Dealer.

Fleet Communication Centre.

Our Fleet Communication Centre is available to assist fleet customers with information on Ford products and services. Telephone 1800 673 207.

Further information on these warranties and services may be obtained from your Authorised Ford Dealer. Visit us on the Internet at <http://www.ford.com.au>

This brochure is designed to provide you with a general introduction to the Ford Products (including available optional equipment) referred to, and should be read in conjunction with the latest specification sheet. Because of changes in conditions and circumstances Ford* reserves the right, subject to all applicable laws, at any time, at its discretion, and without notice, to discontinue or change the features, designs, materials, colours and other specifications and the prices of their products, and to either permanently or temporarily withdraw any such products from the market without incurring any liability to any prospective purchaser or purchaser. The latest specification sheet should be referred to for information on the availability, ordering and use of optional equipment. Always consult an Authorised Ford Dealer for the latest information with respect to features, specifications, prices, optional equipment and availability before deciding to place an order. *FORD MOTOR COMPANY OF AUSTRALIA LIMITED. (A.C.N. 004 116 223) Registered Office: 1735 Sydney Road, Campbellfield, Victoria 3061, Australia. #Conditions and exclusions apply. See your Authorised Ford Dealer for details. Printed November 1997. FCL 6832

COLOURS



Oxford White – Solid
(XL & XLT. Limited from early 1998)



Campari Red – Solid
(XL & XLT)



Charcoal Green – Metallic
(Limited only)



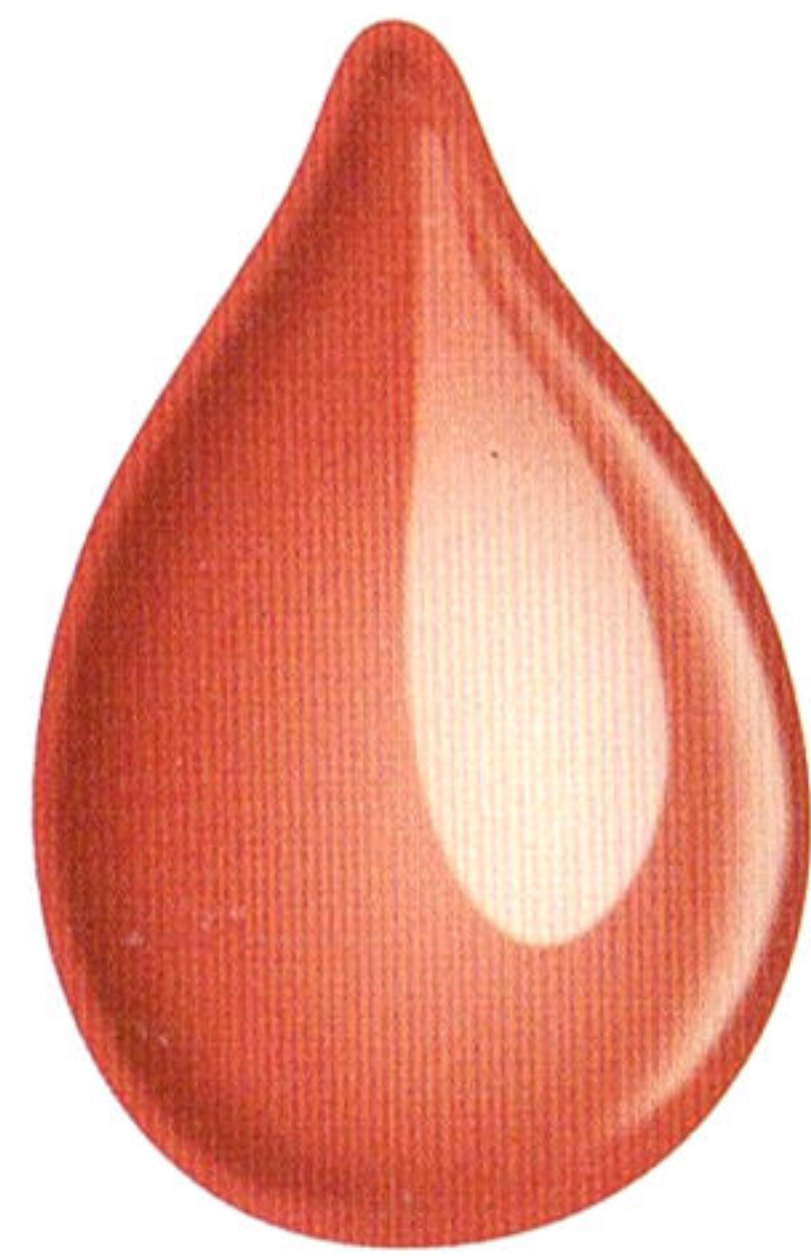
Evergreen Frost – Metallic
(XL & XLT)



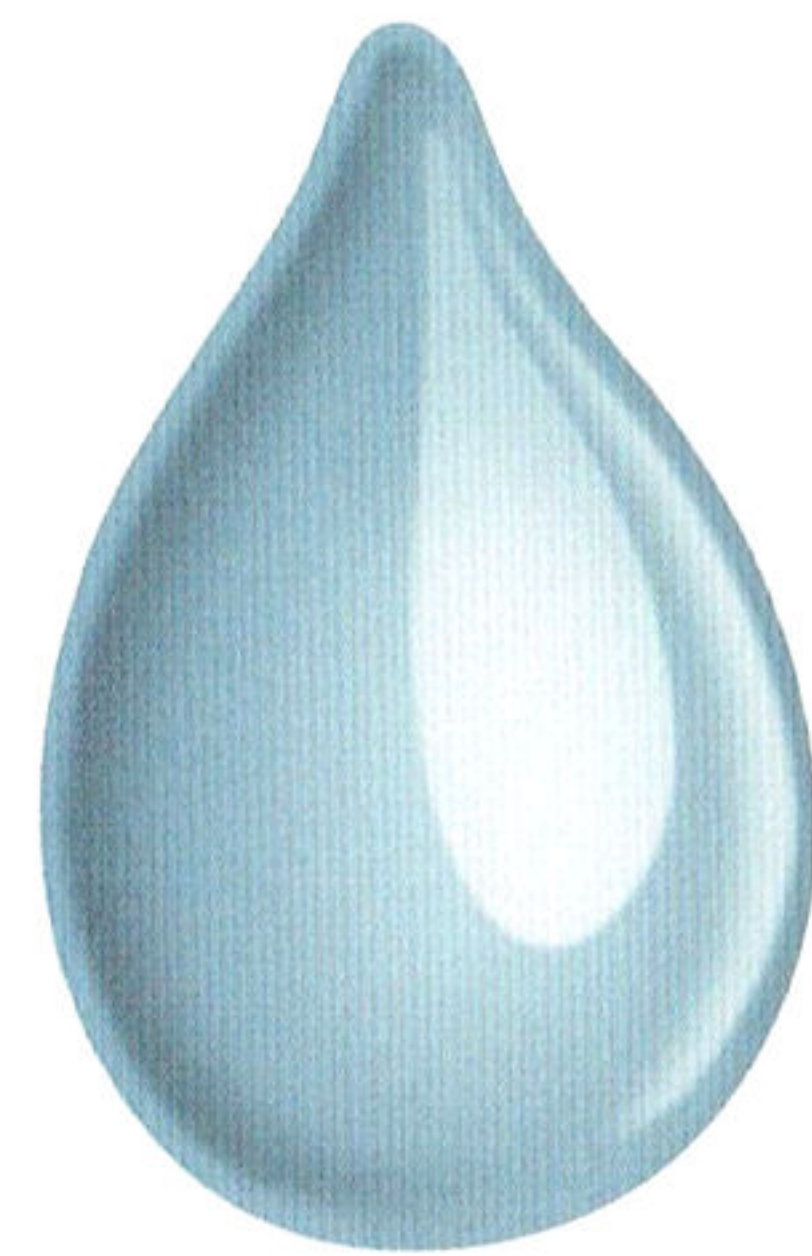
Pacific Green – Metallic
(XL & XLT)



Raven Black – Solid
(XL & XLT)



Toreador Red – Metallic
(XL & XLT)



Light Blue Denim – Metallic
(XL & XLT)



Wedgewood Blue – Metallic
(XL & XLT)



Deep Graphite – Metallic
(XL & XLT)

TRIMS



Grey Velour
(XL & XLT)



Grey Leather
(Limited only)



Tan Velour
(XL & XLT)



Tan Leather
(Limited only)

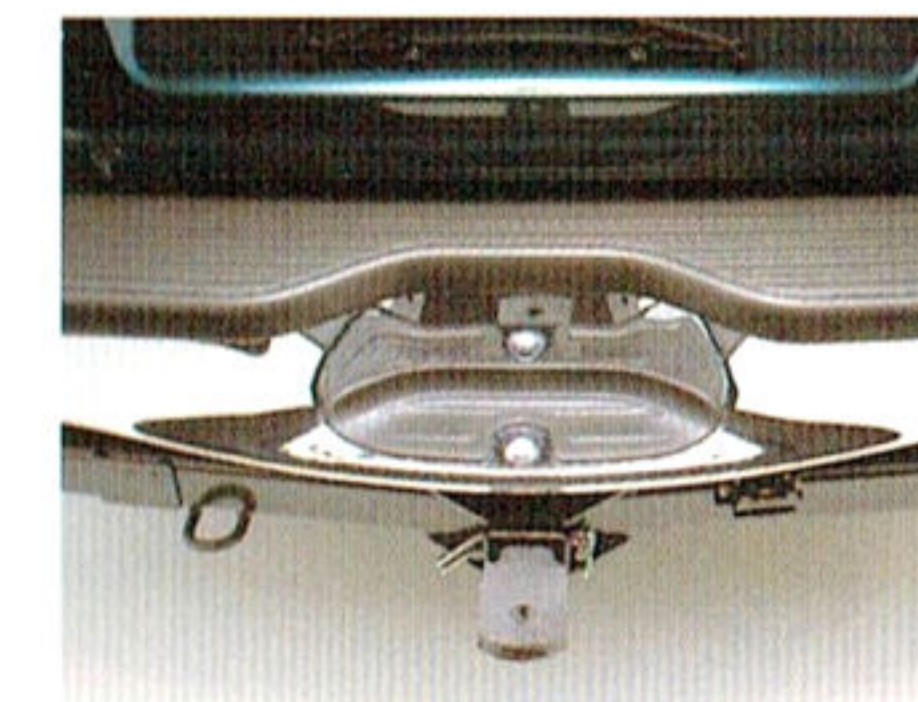
N.B. For detailed colour and trim availability by model, please refer to your Authorised Ford Dealer.

ACCESSORIES

Explorer XL, XLT and Limited are superbly equipped vehicles by any standard. With Ford Approved Accessories, you can add an extra touch of style, protection or convenience.



Heavy duty, plush pile Carpet Mats help protect your Explorer carpet from wear and soiling. Anti-slip backing.



Heavy duty towbar with a towing capacity of 2,380 kg manual and 2,500 kg automatic (subject to State and Territory regulations). Designed to comply with Australian Design Rule (ADR62) specification.

When Ford Approved Accessories are fitted to your new Explorer prior to vehicle delivery, they are covered by the Ford 3 year/100,000 km 'Bumper to Bumper' warranty*.



Third row seat accommodates two children up to 38kg or 160cm height. Styled and trimmed to match vehicle interior. Conforms to Australian Design Rules. (Not available for Limited.)



6-stack CD changer with fully integrated wiring, tamper-proof screws for security and childproof lock. (Standard on Limited.)



Explorer XL in Pacific Green shown equipped with airbag compatible alloy Bull Bar, Weathershield, Headlamp and Bonnet Protectors.

*Conditions and exclusions apply. See your Authorised Ford Dealer for details.

COLOURS



Oxford White – Solid
(XL & XLT. Limited from early 1998)



Campari Red – Solid
(XL & XLT)



Charcoal Green – Metallic
(Limited only)



Evergreen Frost – Metallic
(XL & XLT)



Pacific Green – Metallic
(XL & XLT)



Raven Black – Solid
(XL & XLT)



Toreador Red – Metallic
(XL & XLT)



Light Blue Denim – Metallic
(XL & XLT)



Wedgewood Blue – Metallic
(XL & XLT)



Deep Graphite – Metallic
(XL & XLT)

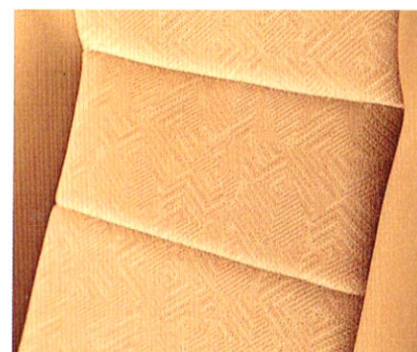
TRIMS



Grey Velour
(XL & XLT)



Grey Leather
(Limited only)



Tan Velour
(XL & XLT)



Tan Leather
(Limited only)

N.B. For detailed colour and trim availability by model, please refer to your Authorised Ford Dealer.

SPECIFICATIONS

FEATURES	XL	XLT	LTD	FEATURES	XL	XLT	LTD
119 kW 4.0 litre fuel injected V6 engine	S	-	-	2-position memory on driver's seat	-	-	S
153 kW 4.0 litre SOHC fuel injected V6 engine	O*	S	S	4-way adjustable front head restraints	-	-	S
5-speed manual transmission	S	-	-	60/40 split folding rear seat back	S	S	S
5-speed auto transmission	O*	S	S	Black leather steering wheel	S	S	-
Control Trac 4WD system with Throttle Position Sensing	S	S	S	Colour-keyed leather steering wheel	-	-	S
Limited slip rear differential	S	S	S	Solar tint side and rear glass	S	S	S
Automatic Ride Control	-	-	S	2-speed wipers with intermittent control	S	S	S
4-wheel power disc brakes	S	S	S	Warning lamps for: brake system fail, ABS, fuel level, park brake on, airbag readiness, seat belt reminder, door/liftgate ajar, battery voltage, engine check	S	S	S
ABS (Anti-lock Braking System)	S	S	S	AM/FM stereo radio/cassette	S	S	S
16 x 7 inch alloy wheels	-	S	S	6-stack CD player*	O	O	S
Power rack and pinion steering	S	S	S	Fully carpeted interior	S	S	S
Driver and front passenger airbags	S	S	S	4 cup holders	S	S	S
Air conditioning, manual control	S	S	-	Roof console with deluxe map/reading light	-	-	S
Automatic climate control air conditioning	-	-	S	Heated rear window/rear window wiper/washer	S	S	S
Centre console with rear heating ducts	-	S	S	Odometer, tachometer, digital clock	S	S	S
Power sunroof with one-touch control	-	-	S	Oil pressure, battery voltage gauges	S	S	S
Cruise control	S	S	S	Headlights on and key-in-ignition warning chimes	S	S	S
Leather upholstery	-	-	S	Driving lights	S	S	S
Premium cloth upholstery	S	S	-	Battery Saver shuts off interior lights after 45 mins of inactivity	S	S	S
SecuriLock ignition immobilisation	S	S	S	Roof rack	O#	S	S
Power door locks	-	S	S	Running boards	O#	O#	S
Remote keyless entry	-	S (n)	S				
Power lift gate lock/unlock button	-	S	S				
Power door mirrors	-	S	S				
Power windows front and rear	-	S	S				
6-way power adjustable front seats	-	S	S				
Power lumbar adjustment on front seats	-	S	S				

*153 kW engine and 5-speed auto transmission fitted as a combination.

#Fitted by your Authorised Ford Dealer.

KEY: S = standard; O = optional; - = not available; (n) = on XLT from early 1998



AN OWNERSHIP EXPERIENCE YOU'RE GOING TO LOVE.

Fordcare.

Fordcare is a whole range of programs, products and services designed to make Ford owners the most satisfied motor vehicle owners in Australia.

The well-being of your Ford is supported by these warranties and services:

New Vehicle Warranty.#

Covers your Ford against defects in factory materials or workmanship for the first 3 years or 100,000 km – whichever occurs first. When fitted at or prior to the time of vehicle delivery, Ford Approved Accessories are also covered by the Ford 3 Year/100,000 km 'Bumper to Bumper' Warranty.

Five Year Perforation Corrosion Warranty.#

Covers the original vehicle's body against perforation corrosion for the first five years of its life.

Lifelong Panel Warranty.#

Covers replacement of outer body panels against perforation corrosion for the life of the vehicle.

Further information on these warranties and services may be obtained from your Authorised Ford Dealer.

Visit us on the Internet at <http://www.ford.com.au>



Ford Customer Assistance Centre.

We're always happy to hear from you and you will find us responsive to your needs. Customer Assistance Centre – Telephone 1800 333 306 (TOLL FREE), in Melbourne Telephone 9359 7023.

Ford Credit Financial Services.

Ford Leasing and Red Carpet Options are available to approved applicants of Ford Credit Australia Limited. Enquire at your Authorised Ford Dealer.

Fleet Communication Centre.

Our Fleet Communication Centre is available to assist fleet customers with information on Ford products and services. Telephone 1800 673 207.

This brochure is designed to provide you with a general introduction to the Ford Products (including available optional equipment) referred to, and should be read in conjunction with the latest specification sheet. Because of changes in conditions and circumstances Ford® reserves the right, subject to all applicable laws, at any time, at its discretion, and without notice, to discontinue or change the features, designs, materials, colours and other specifications and the prices of their products, and to either permanently or temporarily withdraw any such products from the market without incurring any liability to any prospective purchaser or purchaser. The latest specification sheet should be referred to for information on the availability, ordering and use of optional equipment. Always consult an Authorised Ford Dealer for the latest information with respect to features, specifications, prices, optional equipment and availability before deciding to place an order. *FORD MOTOR COMPANY OF AUSTRALIA LIMITED. (A.C.N. 004 116 223) Registered Office: 1735 Sydney Road, Campbellfield, Victoria 3061, Australia. #Conditions and exclusions apply. See your Authorised Ford Dealer for details. Printed November 1997. FCL 6832



EXPLORER



