

EXPLORER





Explorer XLT shown

CONSIDER ALL THE POSSIBILITIES.

It's a nice feeling, knowing that you need never again be confined to roads and highways. Now, if you really want to get off the beaten track and explore Australia, you can do it. On-road or off-road you don't miss a beat. Because as the terrain changes, V6 Explorer's advanced Control Trac 4WD system with TPS (Throttle Position Sensing) is designed to instantly and automatically adjust the amount of front and rear wheel power as needed.

The system makes a lot of sense. It's a good reason to compare the Ford Control Trac 4WD system with the set-up on any other 4WD. We doubt you'll find another 4WD around that's in every way as advanced as Ford Explorer.

So, as you consider all the interesting and adventurous opportunities a 4WD will open up, come and take a good, close look at the 4WD that will pave the way – automatically!



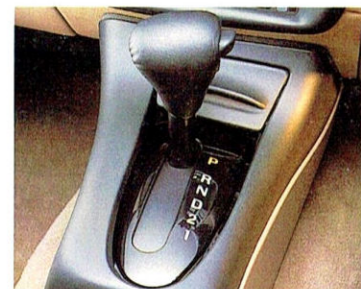
Explorer XLT shown

ENGINEERED FOR ANY ADVENTURE.

Wherever your adventures take you, Ford Explorer is equipped for a variety of demanding situations. With advanced engineering features like Control Trac and, on XLT and Limited, a self-levelling rear suspension, Explorer is capable of handling almost any terrain.

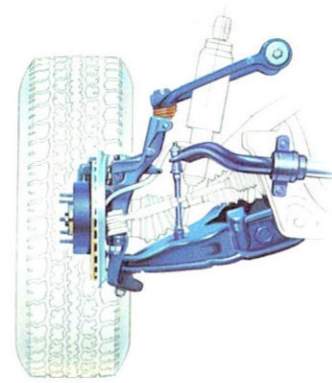
Part-time 4WD or full-time 4WD? Explorer's Control Trac 4WD system gives you the best of both worlds.

In normal conditions, most of the power is delivered to the rear wheels. The instant Control Trac's electronic sensors detect wheel slip, Explorer transfers more power to wheels that are gripping. In addition, Throttle Position Sensing (TPS) reads the position of the accelerator pedal to prevent slip when it senses extra power is about to be applied.



Explorer is the only 4WD in its class with an electronic 5-speed automatic transmission (XLT and Limited only).

The Short and Long Arm (SLA) front suspension, with each front wheel suspended by an upper and lower control arm, shock absorber, stabiliser bar and torsion bar, delivers a smooth, car-like ride. Limited slip rear differential is standard on all models.



Control Trac can make the difference between getting bogged or not. Often, in a part-time 4WD vehicle, by the time the driver reacts and engages 4WD it's too late.

If needed, you can switch to "4WD HIGH", with a minimum 34% of torque being distributed to the front, automatically increasing to 100% as required. For extremely difficult conditions, select "4WD LOW".

The self-levelling rear suspension on XLT and Limited models improves handling in challenging situations, especially when towing. The system eliminates rear end sag by sensing the height of the body over the rear suspension, automatically restoring it to the correct level when necessary. The technology employs air shocker units and a compressor to achieve the desired performance.



Explorer XLT shown.

EXPLORE THE RANGE.

All Explorer models have Ford's Control Trac 4WD system, powerful 4.0 litre V6 engines, anti-lock braking system (ABS), air conditioning and dual airbags – all standard.



Self-levelling rear suspension on Explorer XLT and Limited is great for towing.

Explorer XL gives you power rack and pinion steering, tilt adjustable steering wheel, air conditioning, premium cloth trim, a great AM/FM stereo radio/cassette and solar tint side and rear glass with a protection rating of UPF 15+.

Moving up to Explorer XLT will give you, in addition: 5-speed automatic transmission, ride height control with self-levelling rear air shock absorbers, power windows, remote central locking, 6-way adjustable power driver's seat, alloy wheels, power door mirrors and more.



Explorer Limited shown in Charcoal Green.



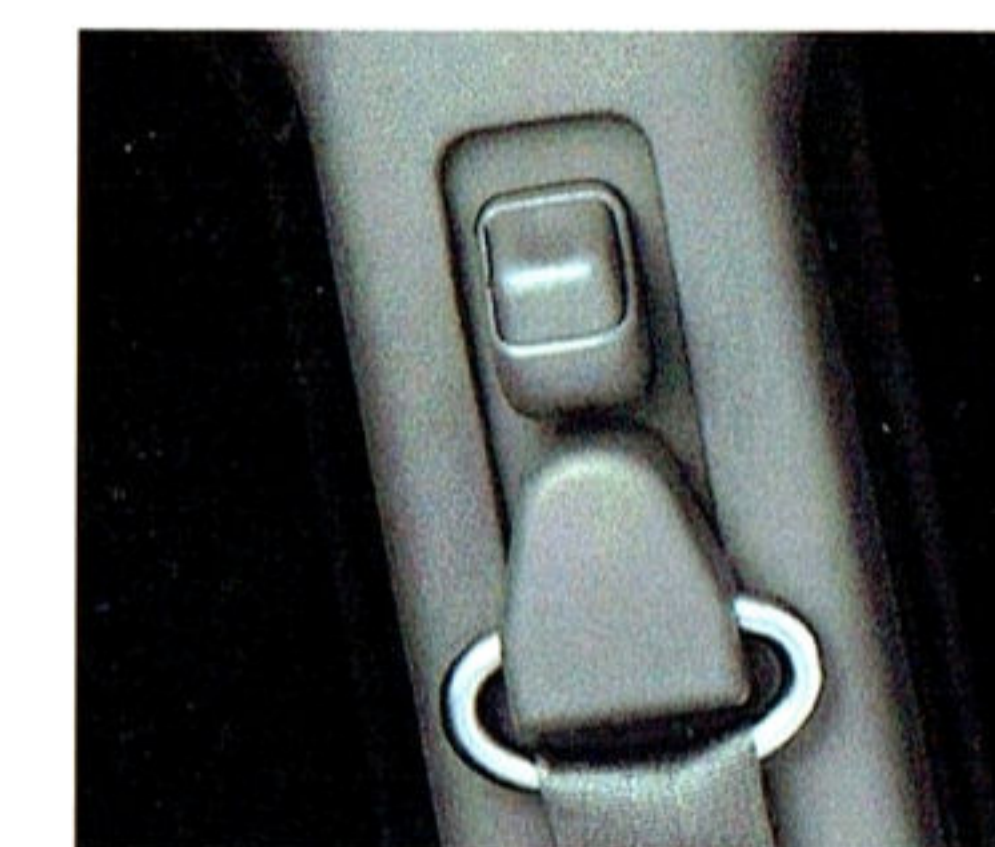
Explorer provides plenty of versatile room for passengers and cargo.



Explorer Limited's standard sunroof with one-touch control.



The switch for Explorer's advanced Control Trac 4WD system.



Height adjustable feature means more comfortable and safer seatbelts.



6-stack CD player and automatic climate control (Limited).

ADVENTURE WITH A 5-STAR RATING.

Explorer Limited combines outstanding off-road capabilities with all the comfort and appointments of a luxury sedan, including leather upholstery, one-touch power sunroof, 6-stack CD player, automatic headlights on/off, 2-position seat memory and automatic climate control.

The 6-way power adjustable driver's seat includes a 2-position memory feature, and both front head restraints incorporate 4-way adjustment for the ultimate in comfort. Overhead, deluxe map reading lights and a compass.

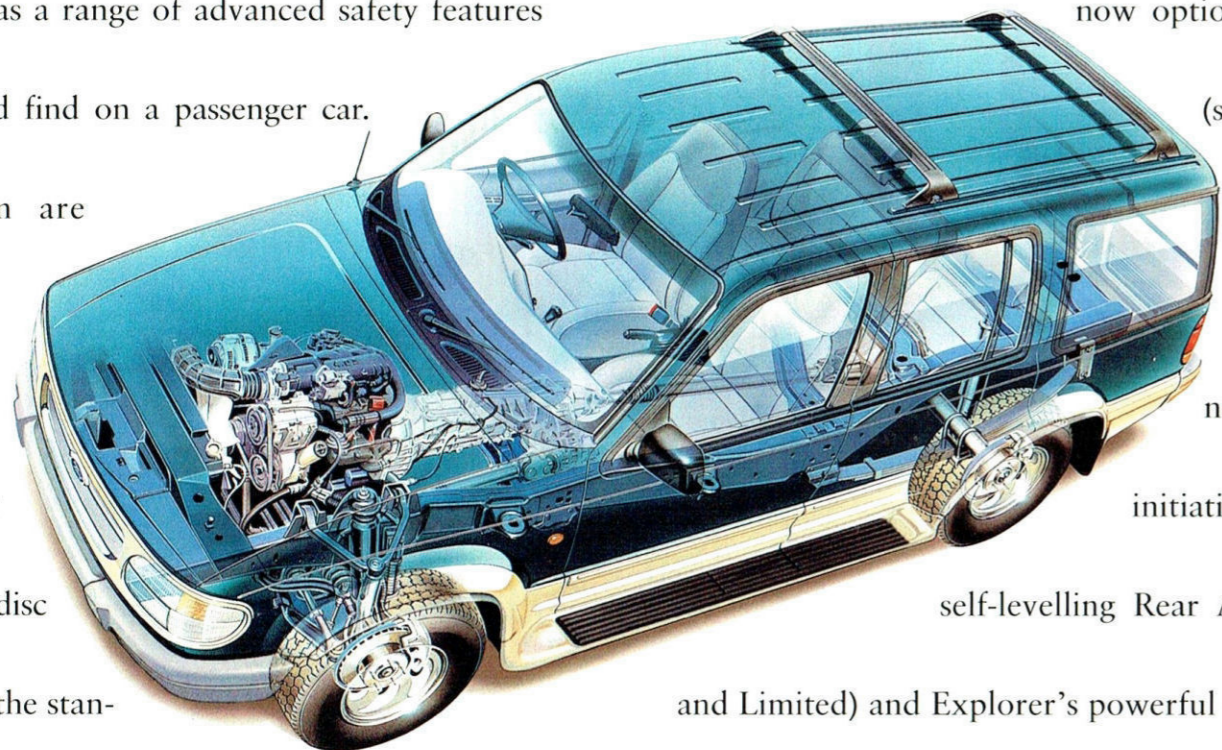
The interior includes a special colour-keyed leather-rimmed steering wheel. Exclusive exterior styling highlights include: full body colour coordination of the grille, wheel arch mouldings and running boards. When it comes to making a statement about power, luxurious refinement and rugged off-road ability, your choice is strictly Limited.



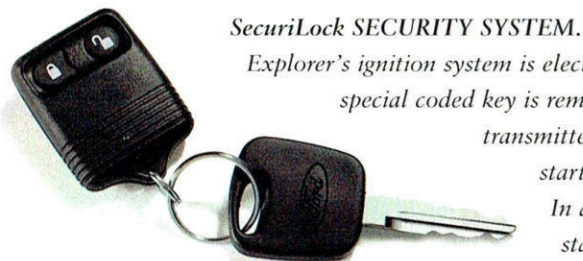
Explorer Limited interior shown.

ADVANCED SAFETY MEASURES.

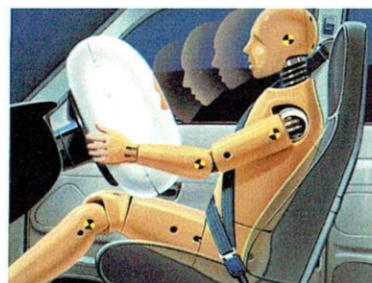
Ford Explorer has a range of advanced safety features that rival those you'd find on a passenger car. Chief among them are Explorer's front-end crush management system, side impact door beams, 4-wheel disc brakes with ABS and the standard airbags for driver and front passenger. Side airbags are



now optional on XL and XLT (standard on Limited). Ford Explorer is also equipped with a number of engineering initiatives, like Control Trac, self-levelling Rear Air Suspension (XLT and Limited) and Explorer's powerful 4.0 litre engines, that are also significant contributors to primary safety.

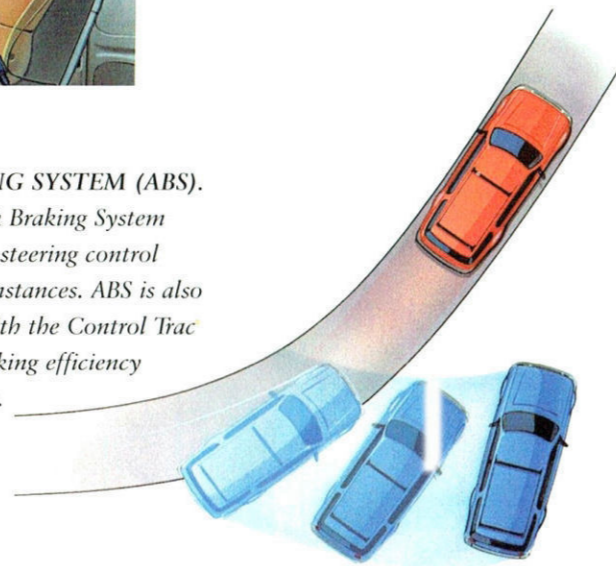


SecuriLock SECURITY SYSTEM.
Explorer's ignition system is electronically disabled when the special coded key is removed. The key has an inbuilt transmitter and the engine will not start without its unique code. In addition, Keyless Entry is standard on XLT and Limited.



THREE-POINT SAFETY BELTS.
All outboard seating positions are equipped with lap/sash seat belts. The rear centre seating position has a lap belt.

ANTI-LOCK BRAKING SYSTEM (ABS).
The standard Anti-lock Braking System helps you to maintain steering control in most braking circumstances. ABS is also designed to interact with the Control Trac system to improve braking efficiency and maximise traction.



DUAL AIRBAGS.
All Explorers are equipped with airbags for both the driver and front passenger. Side airbags are now optional on XL and XLT (standard on Limited). Sensors in the vehicle detect the severity of an impact. If the collision meets the criteria for deployment, the airbags will be activated.

ACCESSORIES WORTH EXPLORING.

Explorer XL, XLT and Limited are superbly equipped vehicles by any standard. With Ford Approved Accessories, you can add an extra touch of style, protection or convenience.



Heavy duty, plush pile Carpet Mats help protect your Explorer carpet from wear and soiling. Anti-slip backing.



Heavy duty towbar with a towing capacity of 2,380 kg manual and 2,500 kg automatic (subject to State and Territory regulations). Designed to comply with Australian Design Rule (ADR62) specification.

When Ford Approved Accessories are fitted to your new Explorer prior to vehicle delivery, they are covered by the Ford 3 year/100,000 km 'Bumper to Bumper' warranty*.



Third row seat accommodates two children up to 38 kg or 160cm height. Styled and trimmed to match vehicle interior. Conforms to Australian Design Rules*. (Not available for Limited.)



6-stack CD changer with fully integrated wiring, tamper-proof screws for security and childproof lock. (Standard on Limited.)



Explorer XL in Raven Black shown equipped with airbag compatible alloy Bull Bar, Weathershield, Headlamp and Bonnet Protectors.

*Conditions and exclusions apply. See your Authorised Ford Dealer for details.
°Warning! Do not fit the third row seat with any cargo barrier.



AN OWNERSHIP EXPERIENCE YOU'RE GOING TO LOVE.

Fordcare.

Fordcare is a whole range of programs, products and services designed to make Ford owners the most satisfied motor vehicle owners in Australia.

The well-being of your Ford is supported by these warranties and services:



Ford Customer Assistance Centre.

We're always happy to hear from you and you will find us responsive to your needs. Customer Assistance Centre - Telephone 1800 333 306 (TOLL FREE), in Melbourne Telephone 9359 7023.

Ford Credit Financial Services.

Ford Leasing and Red Carpet Options are available to approved applicants of Ford Credit Australia Limited. Enquire at your Authorised Ford Dealer.

Fleet Communication Centre.

Our Fleet Communication Centre is available to assist fleet customers with information on Ford products and services. Telephone 1800 673 207.

New Vehicle Warranty.#

Covers your Ford against defects in factory materials or workmanship for the first 3 years or 100,000 km - whichever occurs first. When fitted at or prior to the time of vehicle delivery, Ford Approved Accessories are also covered by the Ford 3 Year/100,000 km 'Bumper to Bumper' Warranty.

Five Year Perforation Corrosion Warranty.#

Covers the original vehicle's body against perforation corrosion for the first five years of its life.

Lifelong Panel Warranty.#

Covers replacement of outer body panels against perforation corrosion for the life of the vehicle.

Further information on these warranties and services may be obtained from your Authorised Ford Dealer.

Visit us on the Internet at <http://www.ford.com.au>

This brochure is designed to provide you with a general introduction to the Ford Products (including available optional equipment) referred to, and should be read in conjunction with the latest specification sheet. Because of changes in conditions and circumstances Ford* reserves the right, subject to all applicable laws, at any time, at its discretion, and without notice, to discontinue or change the features, designs, materials, colours and other specifications and the prices of their products, and to either permanently or temporarily withdraw any such products from the market without incurring any liability to any prospective purchaser or purchaser. The latest specification sheet should be referred to for information on the availability, ordering and use of optional equipment. Always consult an Authorised Ford Dealer for the latest information with respect to features, specifications, prices, optional equipment and availability before deciding to place an order. *FORD MOTOR COMPANY OF AUSTRALIA LIMITED. (A.C.N. 004 116 223) Registered Office: 1735 Sydney Road, Campbellfield, Victoria 3061, Australia. #Conditions and exclusions apply. See your Authorised Ford Dealer for details. Printed June 1999. FCL 7584

