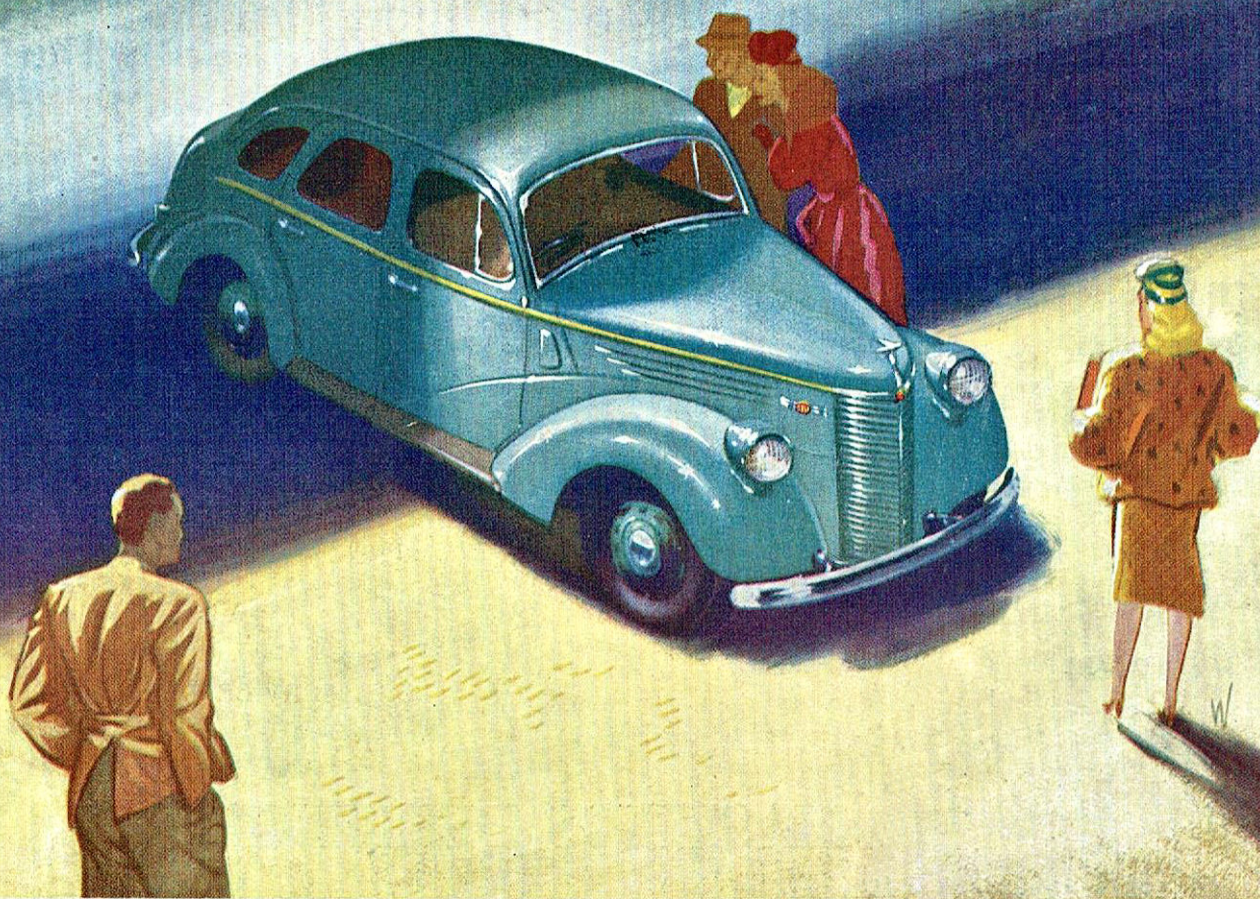
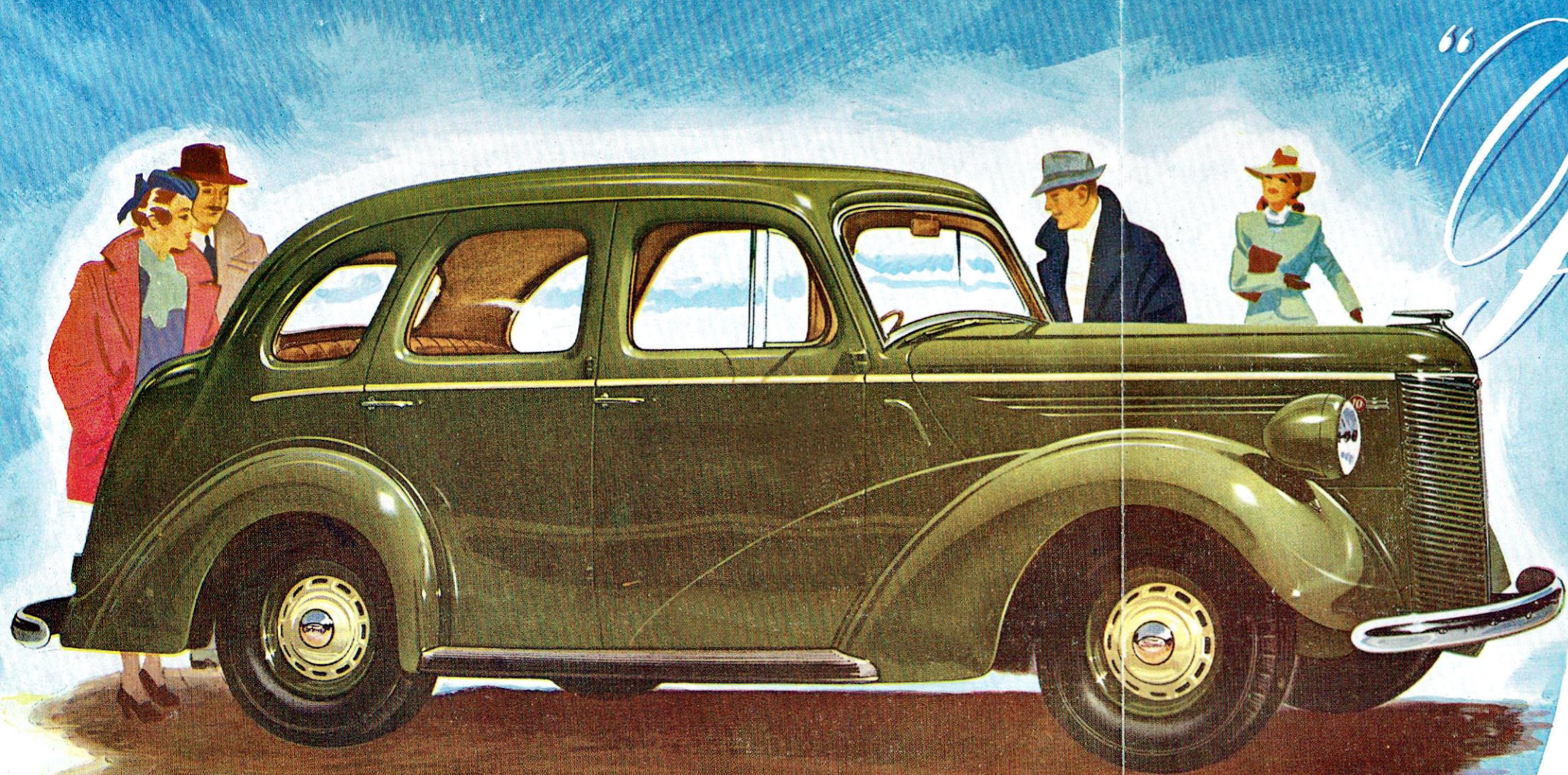


BRITAIN IS PROUD OF
THE NEW

Perfect

... AND SO WILL YOU BE !





“Prefect”

THE 'TEN' WITH
BIG CAR
 APPEAL

FROM Ford-Dagenham, Essex, comes PREFECT . . . acknowledged as top value among the English “Tens”. For buyers in Australia, the initial advantage in overseas value is bettered by complete local production of NEW ALL-STEEL BODIES in the modern plant of Ford-Australia. PREFECT is the “Ten” with big car appeal which brings to the four-passenger-capacity car all the elbow room, all the style . . . the choice of colours . . . the high-grade leathers and carpets . . . the appointments and finish you would expect only from much bigger cars. There is “big car” ventilation with controlled ventilating windows, cowl side ventilators and opening windscreen. It has a luggage boot that is big, too! PREFECT gives you all these . . . plus 10 h.p. operating economy.

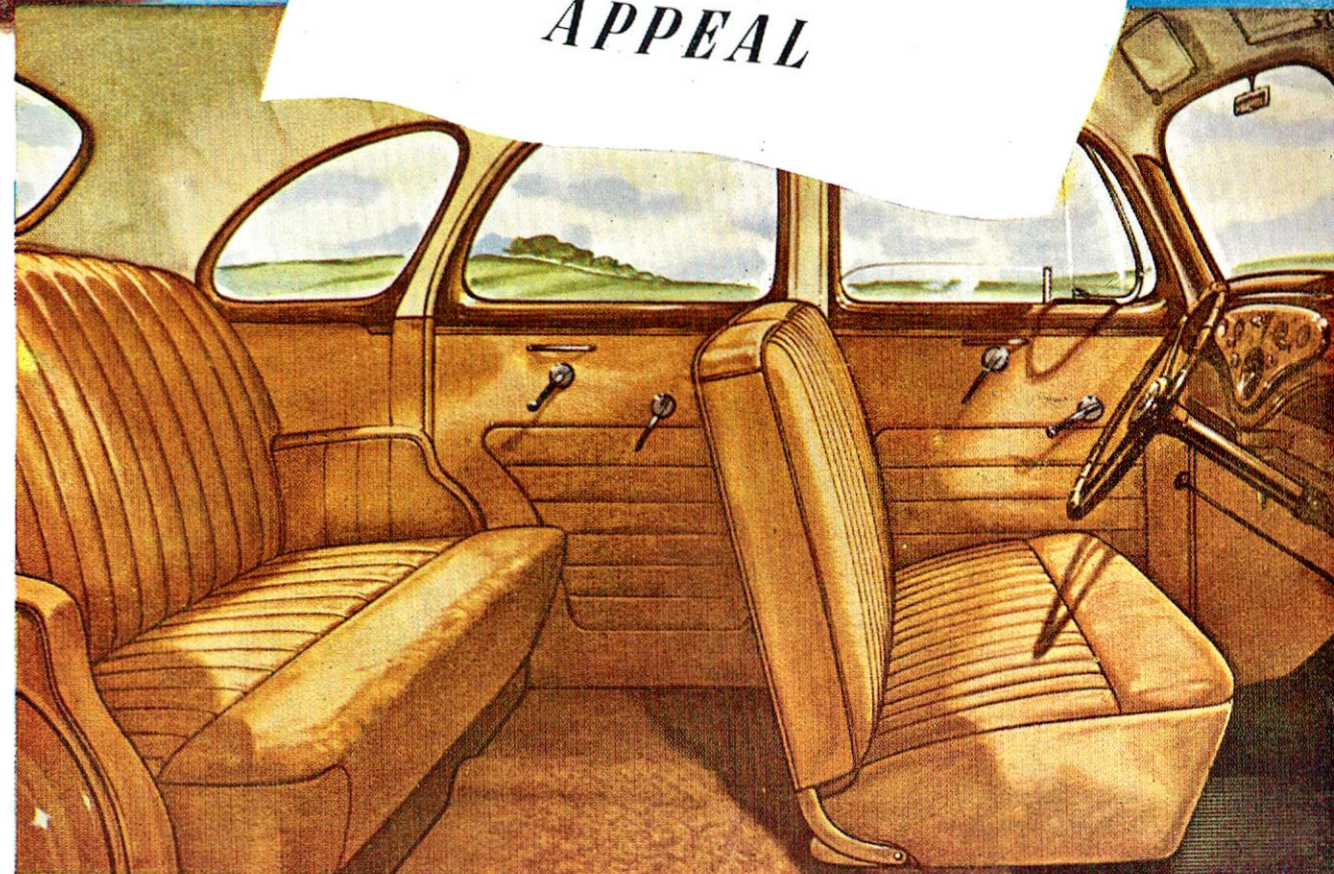
BETWEEN - THE - AXLES SEATING — WITH CENTRE POISE RIDING COMFORT. Passengers, front and rear, ride cradled between the axles. Full torque drive, radius rods and four double-acting hydraulic shock absorbers combine to give a smooth, restful ride.

SELF-ENERGISING BRAKES, FULLY COMPENSATED ensure quick, straight line stops. The trigger-type handbrake is mounted below the instrument panel.

EASY TO HANDLE AND A SMOOTH, CERTAIN GEAR CHANGE. Featherlight steering, spring-cushioned clutch, synchro-mesh gears on top and intermediate speeds make this car a delight to handle in traffic.

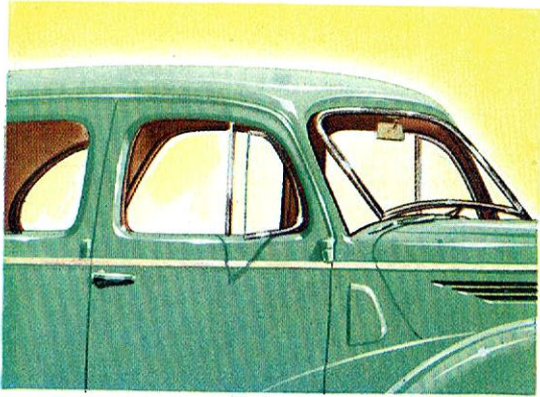
INTERIORS WITH “BIG CAR” APPEAL. Seats are trimmed in high-grade leather in a distinctive pleated motif with a choice of serviceable tan or warm blue colours and are designed to give passengers extra support just behind the knees. The front seat, which is raised from the floor on a tubular frame to provide ample leg room for rear seat passengers, has a divided back so that either side may be tilted forward. Other features include armrests in rear compartment, individual ash trays for each passenger, new easily operated seat adjustments and parcel shelves in the front compartment.

FORD SERVICE BACKS THIS CAR. Wherever you live, specialised FORD service facilities are nearby to ensure lasting efficiency from your PREFECT.



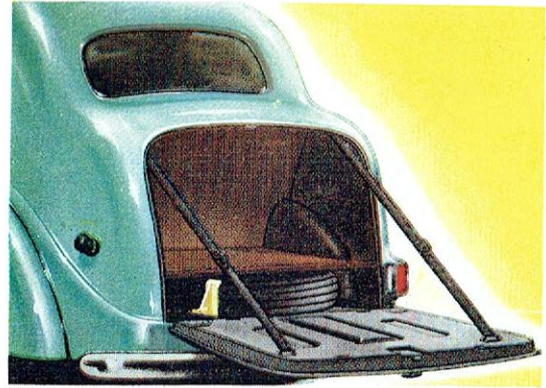
HASTINGS DEERING SERVICE LTD. Sole Metropolitan Distributors. Telephone: MO 412 (25 lines)

✓ Check for yourself these extra value features of **PREFECT**



CONTROLLED AND COMPLETE VENTILATION.

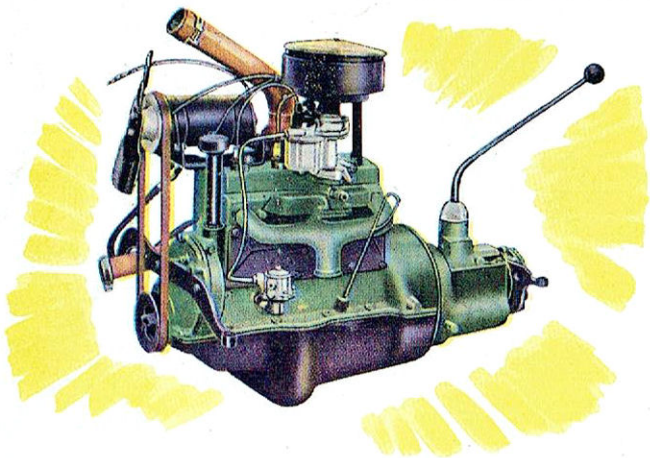
In all kinds of weather, you'll appreciate the ventilating system of this new **PREFECT**. On rainy days, just open the front ventilating window a fraction for complete ventilation. On hot days open the windscreen, adjust the front window ventilators to scoop in the air . . . cowl ventilators on each side also do their part to provide a system of ventilation that is really comfortable.



A BOOT THAT'S BIG AND BLENDS WITH THE BODY LINES.

Here's another important something that's been added to your "after-the-war" **PREFECT** . . . a **REAL** luggage boot that gives far more space than previous models. It's completely waterproof. At night, the beam of the tail-light serves to light up interior. Spare wheel is housed in the boot, away from the weather, and in a compartment of its own.

THE LONG-LIFE 10 H.P. ECONOMY ENGINE.



During the last six years, the **PREFECT** engine has been chosen for arduous wartime service where performance and reliability were essential . . . in fire pumps, road rollers, generating sets and marine work. **PREFECT** engine features include a three-bearing crankshaft, statically and dynamically balanced, mirror-finish cylinder walls, precision-set valves that need no adjustment; pressure-feed lubrication to crankshaft main bearings, camshaft and big-end bearings. **PREFECT** now has oil-resisting rubber engine mountings to isolate vibration.

Ford Motor Company of Australia Pty. Ltd., whose policy is one of continuous improvement, reserves the right to change specifications and prices at any time without notice or incurring liability to purchasers.

FORD MOTOR COMPANY OF AUSTRALIA PTY. LTD.
(Inc. in Vic.) Regd. Office, Geelong