



The New **V8**

PILOT

3 • 6 LITRES

S P E C I F I C A T I O N S :

Engine.

8 cyl., capacity 3,622 cc. Bore 3.06" (77.79 mm.), stroke 3.75" (92.25 mm.), comp. ratio 6.15 to 1. Rated h.p. 30.01, developing 85 b.h.p. at 3,500 r.p.m.

Electrical System.

6-volt lighting, coil ignition, automatic advance and retard, constant voltage control.

Fuel System.

Dual downdraught carburettor, mechanical petrol pump. Petrol tank capacity 12½ gallons (56.8 litres).

Cooling System.

Thermo-syphon, assisted by two centrifugal impellers. Built-in thermostats. Water capacity 4.5 imp. gallons (20.375 litres).

Transmission.

Dry single plate centrifugally assisted clutch.

Gear Ratios.

Bottom Gear	11.77
2nd Gear	6.70
Top Gear	3.78
Reverse	15.13

Synchromesh operates between top and 2nd gear.

Gear Lever.

Control mounted on steering column.

Suspension.

Transverse semi-elliptic springs with oil-less shackles.

Shock Absorbers.

Double-action hydraulic type.

Steering.

Worm and roller type. Ratio 15.8 : 1.

Wheels and Tyres.

Wheels (easy clean) pressed steel. Tyres 6.50 x 16.

Brakes.

Hydro-mechanical, brake drum dia. 12" (34.48 cm.).

Body.

Welded steel, 4 door. Safety glass all-round, opening windscreen. Luggage compartment accessible from outside, spare wheel enclosed in luggage compartment door.

Instruments.

Conveniently grouped, including fuel gauge, oil pressure gauge, water temperature gauge, speedometer and ammeter.

Controls.

All controls are located centrally and include instrument panel lighting rheostats, starter and lighting switches, windscreen wiper and choke controls, tell-tale lights for ignition and direction indicators. The self-cancelling indicator switch is on the centre of the steering wheel. Finger-tip horn ring and steering column gear-shift lever. Steering and ignition lock mounted on steering column. Foot-operated headlamp dipper switch.

Equipment.

Dual vacuum-operated windscreen wipers, self-cancelling direction indicators, dual "Wind-tone" horns,

three ash-trays, electric cigarette lighter, electric clock, two sun visors, full width parcel tray under the instrument panel, bench type adjustable front seat, arm-rests on all four doors. Locks on doors, luggage compartment, ignition and steering. Remote control rear blind, external replaceable oil filter, oil bath type air cleaner.

General Dimension.

Overall length	14' 6¾" (4.438 m.)
Overall width	5' 9½" (1.765 m.)
Overall height	5' 6" (1.676 m.)
Wheelbase	9' 0¼" (2.75 m.)
Track front	4' 7⅞" (1.419 m.)
Track rear	4' 10" (1.473 m.)
Turning circle	41.6' (R.) (12.649 m.) 42.6' (L.) (12.954 m.)

Ford Eclipse Car Radio.

Specially designed for Pilot and providing the range and tonal qualities of a fine living-room set. A genuine Ford Accessory easily installed and available at moderate extra cost. Your Ford Dealer will be glad to give you details.

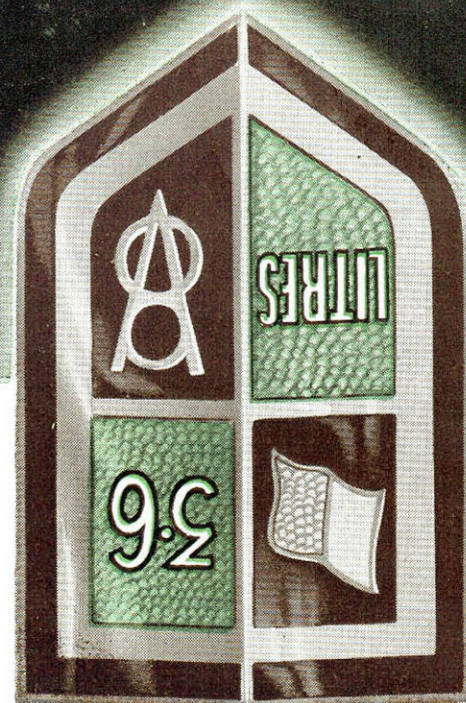
Ford Motor Company Ltd., whose policy is one of continuous improvement, reserves the right, subject to such regulations as may from time to time apply, to change specifications and prices at any time without notice or incurring liability to purchasers.

3 • 6 L I T R E S

P I L O T

8 V

The New



S P E C I F I C A T I O N S :

Engine.

8 cyl., capacity 3,622 cc. Bore 3.06" (77.79 mm.), stroke 3.75" (92.25 mm.), comp. ratio 6.15 to 1. Rated h.p. 30.01, developing 85 b.h.p. at 3,500 r.p.m.

Electrical System.

6-volt lighting, coil ignition, automatic advance and retard, constant voltage control.

Fuel System.

Dual downdraught carburettor, mechanical petrol pump. Petrol tank capacity 12½ gallons (56.8 litres).

Cooling System.

Thermo-syphon, assisted by two centrifugal impellers. Built-in thermostats. Water capacity 4.5 imp. gallons (20.375 litres).

Transmission.

Dry single plate centrifugally assisted clutch.

Gear Ratios.

Bottom Gear	11.77
2nd Gear	6.70
Top Gear	3.78
Reverse	15.13

Synchromesh operates between top and 2nd gear.

Gear Lever.

Control mounted on steering column.

Suspension.

Transverse semi-elliptic springs with oil-less shackles.

Shock Absorbers.

Double-action hydraulic type.

Steering.

Worm and roller type. Ratio 15.8 : 1.

Wheels and Tyres.

Wheels (easy clean) pressed steel. Tyres 6.50 x 16.

Brakes.

Hydro-mechanical, brake drum dia. 12" (30.48 cm.).

Body.

Welded steel, 4 door. Safety glass all-round, opening windscreen. Luggage compartment accessible from outside, spare wheel enclosed in luggage compartment door.

Instruments.

Conveniently grouped, including fuel gauge, oil pressure gauge, water temperature gauge, speedometer and ammeter.

Controls.

All controls are located centrally and include instrument panel lighting rheostats, starter and lighting switches, windscreen wiper and choke controls, tell-tale lights for ignition and direction indicators. The self-cancelling indicator switch is on the centre of the steering wheel. Finger-tip horn ring and steering column gear-shift lever. Steering and ignition lock mounted on steering column. Foot-operated head-lamp dipper switch.

Equipment.

Dual vacuum-operated windscreen wipers, self-cancelling direction indicators, dual "Wind-tone" horns,

three ash-trays, electric cigarette lighter, electric clock, two sun visors, full width parcel tray under the instrument panel, bench type adjustable front seat, arm-rests on all four doors. Locks on doors, luggage compartment, ignition and steering. Remote control rear blind, external replaceable oil filter, oil bath type air cleaner.

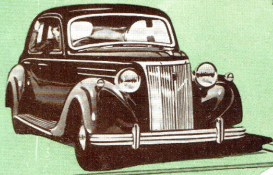
General Dimension.

Overall length	14' 6¼" (4.438 m.)
Overall width	5' 9½" (1.765 m.)
Overall height	5' 6" (1.676 m.)
Wheelbase	9' 0¼" (2.75 m.)
Track front	4' 7⅞" (1.419 m.)
Track rear	4' 10" (1.473 m.)
Turning circle	41.6' (R.) (12.649 m.) 42.6' (L.) (12.954 m.)

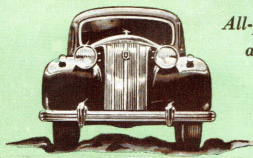
Ford Eclipse Car Radio.

Specially designed for Pilot and providing the range and tonal qualities of a fine living-room set. A genuine Ford Accessory easily installed and available at moderate extra cost. Your Ford Dealer will be glad to give you details.

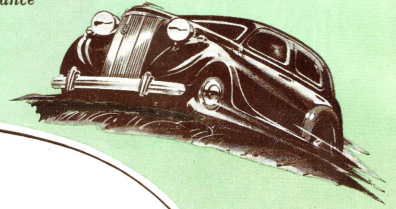
Ford Motor Company Ltd., whose policy is one of continuous improvement, reserves the right, subject to such regulations as may from time to time apply, to change specifications and prices at any time without notice or incurring liability to purchasers.



Extra-safety brakes



All-purpose wheelbase and ample road clearance

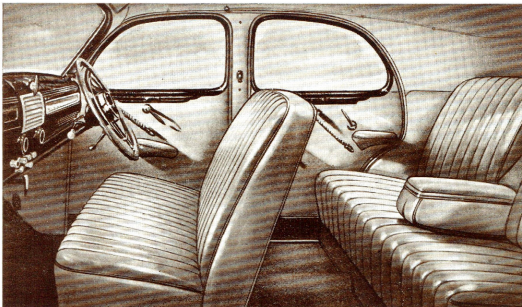
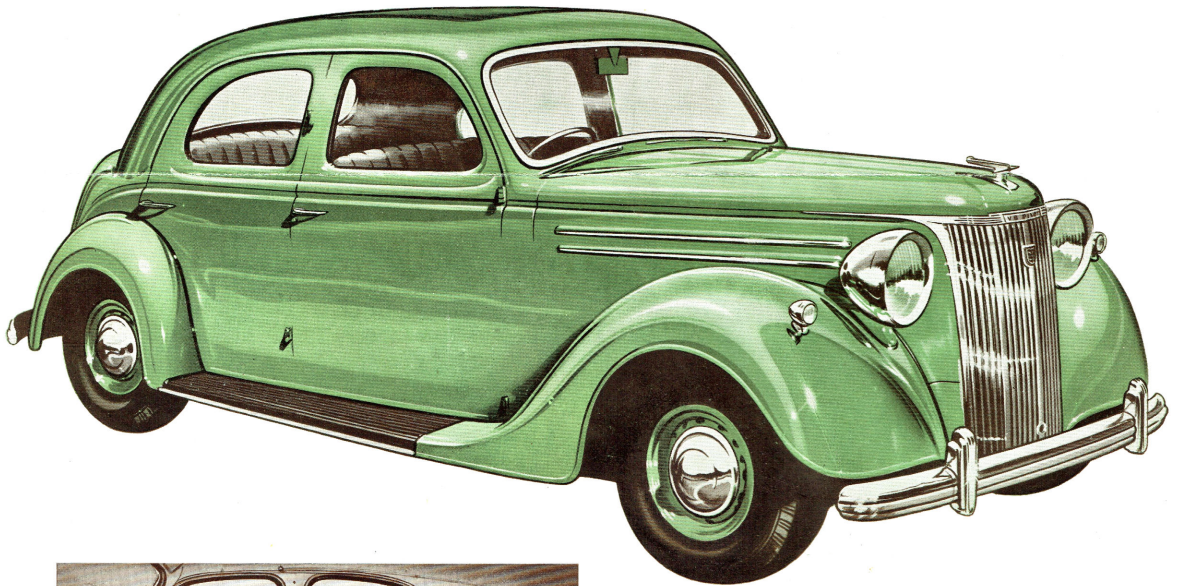


"American-standard" power output

English Styling

V8 POWER

RIGHT FOR AUSTRALIAN ROADS



The styling is in traditional English good taste. Inside is roomy comfort for five people, tailored leather upholstery and genuine English quality in design.

THE Ford V8 engine gives this English sedan the sustained high performance and power reserve usually found only in American type cars.

The Pilot is big and robust. It has 108 $\frac{1}{4}$ " wheelbase, a wide wheeltrack and ample road clearance for outback roads.

Big 6.50 x 16 heavy duty tyres give smooth riding in city or country. Combined mechanical and hydraulic brakes give extra safety at all times.