

Best year yet to go FORD!

FALCON





NEW FALCON

LOOKS GREAT! GOES GREAT! GREAT VALUE!

More style, more comfort, more durability even more performance, and twice a year service savings... the most complete value ever offered by FORD!

Your money's worth has never come in bigger measure than with the new Falcon. Styling combines grace and solidity in an impressive and individualised manner. From upholstery to instrument panel, interiors are more luxurious, and more comfortable than ever—yet longer-lasting and simple to maintain.

Engines, suspension and steering are refined to even further increase the enjoyment you get from behind the wheel. Falcon is more substantial than ever, with more steel in its frame, huskier body, more solid, road-hugging strength. Routine servicing is down to a minimum — required only twice-a-year or each 6000 miles. Every detail reflects the extra care and thorough workmanship with which the car is built.

Furthermore, this Falcon is designed, engineered and manufactured *completely* in Australia — tested, toughened, and tested again to the ultimate limits of effort. It now offers you substantially more "car" than anything else near its price.

In all, there are 8 models from which to choose — 2 Sedans, 2 Station Wagons, 2 Hardtops — and the glamorous Fairmont Sedan and Station Wagon models. Whichever Falcon you prefer, examine it closely and then draw your own conclusions. We think you will agree that it is indeed — *The Best Year Yet To Go FORD!*

Australia's durability champion

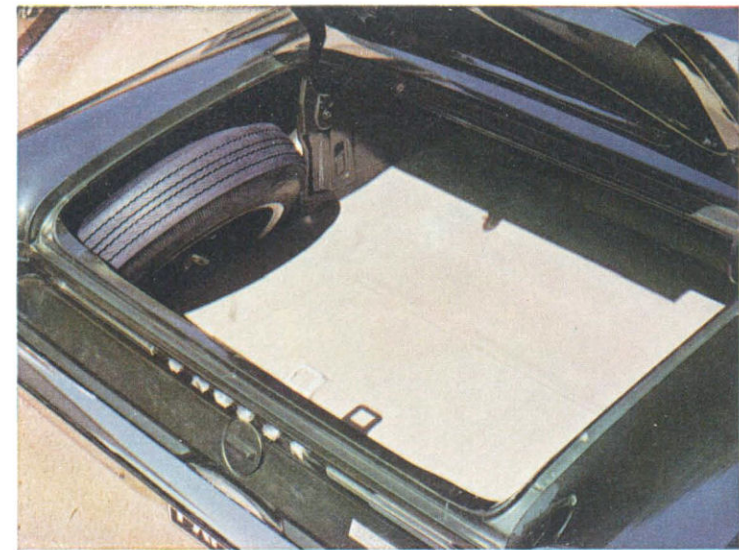
No other Australian car has matched the results of the Falcon-Mobil 70,000 Miles Durability Run. On the Ford Proving Ground, over the toughest circuit Australia's ace drivers had ever experienced, five Falcons, in their combined running, totalled 70,000 miles in 8 $\frac{3}{4}$ days, averaged 71.3 mph and established 49 endurance records*. In the final hours of the run, all five cars were still lapping the circuit at over 70 mph — and were even breaking time and distance records established on the first day!

* All records subject to official confirmation by CAMS (Confederation of Australian Motor Sports) as this catalogue went to press.

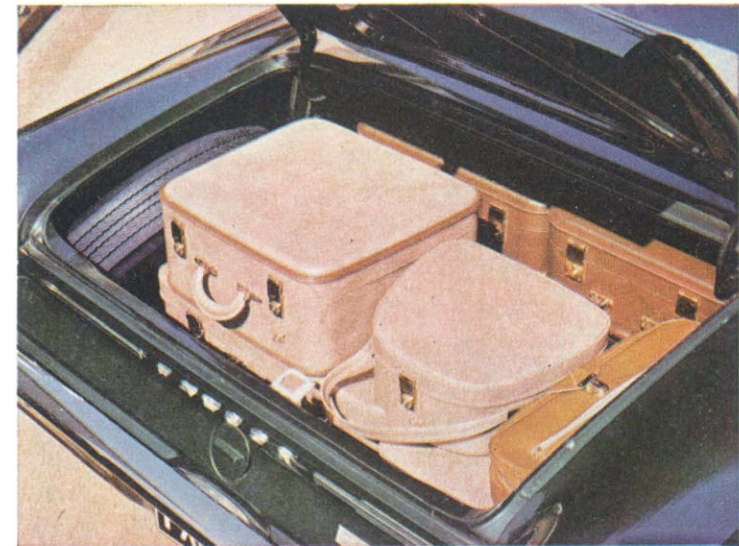
Best year yet to go FORD!



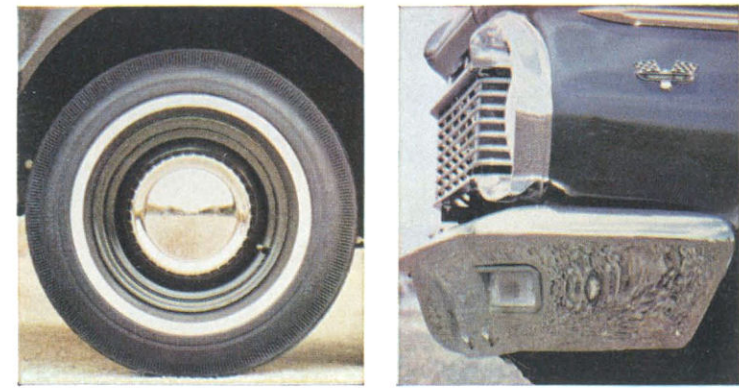
Above: Falcon Deluxe Sedan



Falcon's new spare wheel position provides . . .



greater luggage space in the boot!



All wheels feature safety rims . . . wrap-around bumpers give great protection.

FALCON DELUXE SEDAN LOOKS GREAT! GOES GREAT! GREAT VALUE!

This is the Falcon Deluxe Sedan—and there's a lot more to it than that which pleases your eye.

Beneath that bold new styling is concealed a rugged new body construction. "Torque-boxes"—massive chassis-type frames—are welded into the body structure and run the entire length underneath

the passenger compartment. These give the Falcon body exceptional strength and tightness.

Inside is the most luxurious and spacious interior ever produced in Falcon's class. New "Glove Grain" vinyls look smarter, last longer. The front seat is 2 inches wider for more comfort. New seat springing and deep, foam-cushioning provide the utmost for relaxation, yet provide firm support. The new Falcon instrument panel sweeps handsomely across the front, includes separate right and left turn-signal lights. All instruments are fully illuminated. The speedometer now reads to 120 m.p.h.

Refinements to suspension provide an even better ride. Revised valving to front and rear shock absorbers, and new spring rates mean

a marked improvement in handling and vehicle control, particularly on irregular surfaces.

Insulating and sound-proofing materials completely line the floor, engine wall, roof and the engine hood to let you travel in a remarkable degree of quietness.

The new position of the spare wheel in the boot allows a big family's quota of luggage to be carried—and still with the spare wheel accessible.

And, you'll like the spirit Falcon has to offer—a choice of three engines topped off by the rocketing "Super Pursuit 200" with 121 brakehorsepower. Each Falcon engine, incidentally, features a modified camshaft to make low-speed driving more responsive.

New "Fordomatic 3S" 3-speed automatic transmission, optional at moderate extra cost, gives you more responsive automatic driving, too, and increased petrol economy.

Standard Feature Highlights:

- Self-adjusting brakes that never need adjusting for the life of the brake-linings, and linings are bonded for up to 30% more life
- "Diamond Lustre" baked enamel for longer life and less care in keeping its gleaming showroom shine
- Undercoating of all vital underbody parts
- Big 6.50-inch tyres
- Safety-type wheel rims
- White safety-type steering wheel
- 6000-mile routine servicing and lubrications
- 2-speed electric windshield wipers
- Dome light in centre of roof
- Courtesy lights on front doors
- 96-horsepower engine
- Zone-toughened windshield
- Choice of 5 all-vinyl colour-keyed interiors
- Choice of 14 exterior colours, including 7 lustrous metallics.



Above: Falcon Deluxe Station Wagon in Silver Blue Metallic with Arctic White Roof



There are 77" of load length with the tailgate closed, 98" with it open.



Conversion of the second seat to flat floor is simplicity itself.



The roll-down rear window is extra convenient—the tailgate is counterbalanced.

FALCON DELUXE STATION WAGON

Meet the handsomest, most rugged and versatile station wagon in Australia. It brings you new beauty outside—and inside. Engineering refinements provide more body strength and handling-ease, an even smoother ride, more value all-round.

There are 77 inches of sleeping length, 69 cubic feet of cargo space. And that's with the driver's seat in a driveable position and the

tailgate closed. Which means you can pile all sorts of things in a Falcon that mightn't fit in another wagon.

The tailgate is counter-balanced and features Falcon's wind-down rear window. You simply wind it down, and then lower the tailgate. For loading smaller items you don't even need to lower the tailgate—just pop them through the window opening.

Conversion from passenger seating to flat cargo floor is simplicity itself. Release a single catch on the driver's side . . . seven seconds to swing over the seat . . . and you have a full-length floor, perfectly level.

Special "Torque-box" chassis frames, extra steel and muscle in the body and suspension, provide extra strength—you can work a Falcon Wagon much the same as a light truck. It's built to take it.

Interiors are more attractive and durable than ever. All seats are foam-cushioned, luxuriously upholstered in "Glove-Grain" vinyls. The front seat is 2 inches wider for more comfort—particularly for the driver when there are three in the front seat.

An improved ride is the result of new spring rates and valving to front and rear shock absorbers. Added to this really smooth, more controlled ride, is the strategic placement of all of Falcon's insulating and sound-proofing materials for one of the quietest rides you've yet experienced.

Select from three engines: the top-economy 96-horsepower engine (standard), the lively and economical "Pursuit 170" engine, and the rocketing "Super Pursuit 200" engine. You also have the choice of

two transmissions: manual, and the new ultra-smooth and responsive "Fordomatic 3S" 3-speed automatic transmission.

Power Tailgate Window: Available for moderate extra cost. Lets you raise or lower the tailgate window by pressing a switch from the driver's seat, or by turning a key in the tailgate.

Standard Feature Highlights:

- Self-adjusting brakes that never need adjusting for the life of the linings, and linings are bonded for up to 30% more life.
- Undercoating of all vital underbody parts
- 6000-mile routine servicing and lubrications
- Safety-type wheel rims
- White, safety-type steering wheel
- 2-speed electric windshield wipers
- Zone toughened windshield
- Dome light in centre of roof
- Courtesy lights on front doors
- Protective rubber mat in the rear of the cargo area
- Big 6.50 inch tyres
- Choice of 14 exterior colours, including 7 lustrous metallics, in gleaming "Diamond Lustre" baked enamel
- 96-horsepower engine.



Top and extreme right: Falcon Deluxe 2-door Hardtop in Arctic White Above: Falcon Futura 2-door Hardtop in Satin Red

FALCON HARDTOPS

Step into the sleek world of the Falcon Hardtops. Exclusive. Racy. Dashing. That's where they start. Where you finish is out front—because they're the most forward-looking and refreshing form of motoring in Australia today, with a host of features for your personal enjoyment.

Bold, exclusive styling—obviously. A ride that's the plushiest in the 6-cylinder field, it's so smooth and quiet. Solid quality you can

feel on the road, see in the fine craftsmanship and meticulous finish.

On the road the Falcon Hardtop handles with the grace and agility of a true road machine. Steering is light and quick in its response. Special "Torque-box" chassis frames provide exceptional body tightness and rigidity. Falcon's "Pursuit 170" engine, standard equipment at no extra cost, stars with fast acceleration, effortless cruising speeds and real economy.

Inside are the most eye-appealing interiors ever provided by any car in this price range. Every colour, every fabric is designed with a decorator's care. For the ultimate in restful ride, seats provide deep, foam-cushioned comfort, and strategic placement of special insulating and sound-proofing materials provide exceptional quietness.

There's much more in Falcon Hardtop's list of value features. Sample the model that pleases you best: Deluxe or Futura. Both promise you a way of life no other car can hope to equal — and they're priced to make it easy for you to "go Hardtop".

Standard Feature Highlights (Deluxe Hardtop):

- All-new interior trim styles in luxurious "Glove Grain" vinyls, with tilt-forward rear section of front seat to allow easy access for rear seat passengers
- "Pursuit 170" engine □ "Floating" rear view mirror □ Interior "courtesy" light □ Dome light in centre of roof □ Self-adjusting brakes with bonded linings
- Twice-a-year routine servicing and lubrications □ Undercoating of all vital underbody parts □ Zone-toughened windshield □ White, safety-type steering wheel □ Safety-type wheel rims □ 2-speed electric windshield wipers □ Complete body insulation and sound proofing □ Choice of 10 single-tone colours, including

6 lustrous metallics □ Choice of 3 interior trim combinations.

Standard Feature Highlights (Futura Hardtop):

- Individually adjustable twin front seats with padded centre console □ New, twisted loop, deep-pile carpeting □ All-new interior styling with new, leather-grained expanding vinyls □ Padded dashboard and sun visors □ White side-wall tyres □ High-fashion trim rings □ Distinctive side chrome styling □ "Futura" block letters at rear □ Choice of 10 single-tone colours, including 6 lustrous metallics □ 3 interior trim combinations in luxury expanding-type vinyl □ Plus all other items mentioned for Deluxe Hardtop above.

Optional Feature Highlights (Both Models):

- New, "Fordomatic 3S" 3-speed automatic transmission □ "Super Pursuit 200" engine □ Radio □ New, 2-speed Heater/Demister □ Windshield Washers □ Tinted Windshield (banded, laminated type).

Fairmont

SEDAN & STATION WAGON

The new Fairmont models are truly a new inspiration in luxury and value. They represent the supreme expression of Falcon prestige that will say "fine car" in any company. The new Fairmont is available as a 4-door Sedan and as a Station Wagon. With both models, styling is the most distinctive of the Falcon range. Special chrome side mouldings, elegant "Fairmont" script at the side and rear, bright metal window-surrounds, and unique high fashion wheel covers, enhance the clean lines.

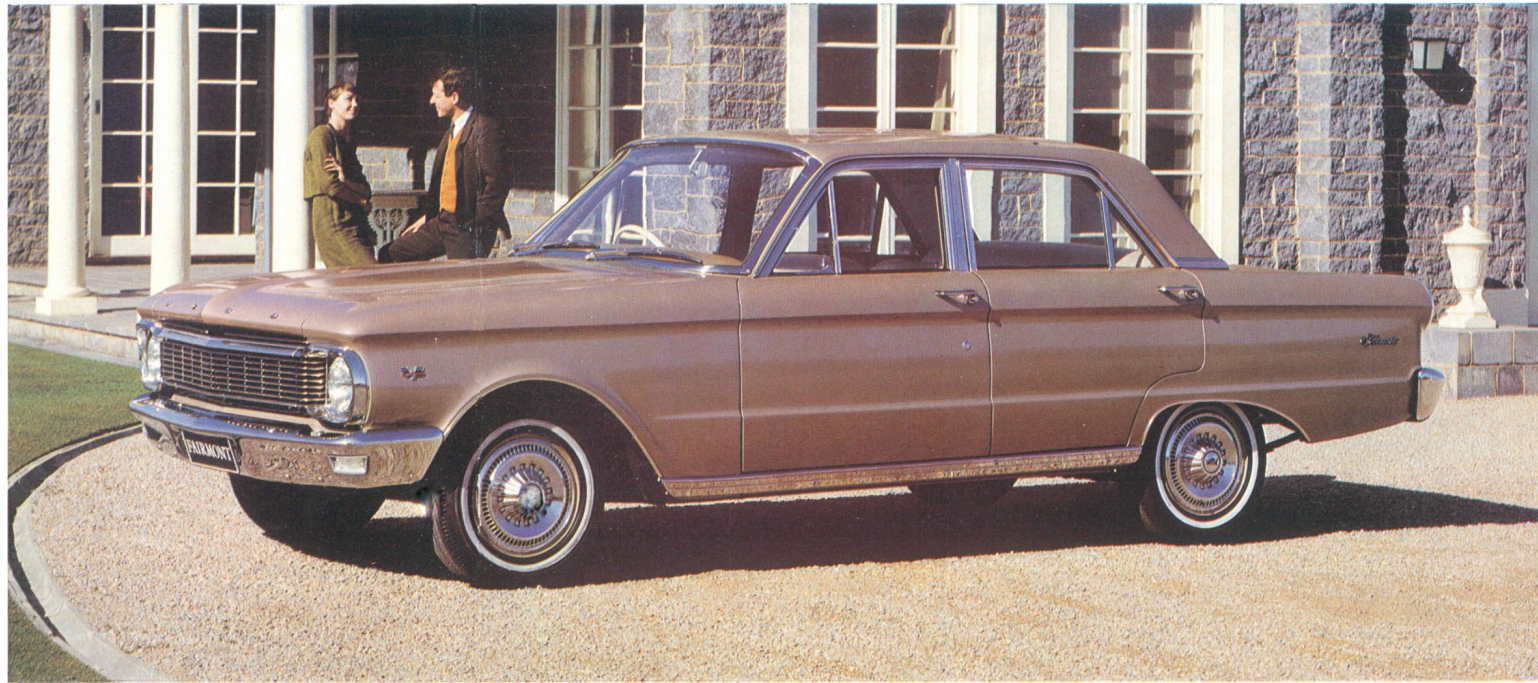
Its deep-down comfort has no limits. You relax in individual, contour-cushioned front seats that recline to any position you desire. Extravagant use of special sound-deadening materials provide you with a remarkably hushed ride. Thick, cut-pile, wall-to-wall carpeting (the most expensive we could find), and rich "Doe Skin" vinyl upholstery (the world's softest and most supple) contribute to the outstanding luxury of the car. Colours: Champagne. Ice Blue. Parchment. Charcoal. In addition, finely detailed door-trims and acoustically-perforated headlinings are colour-matched to upholstery. A walnut wood-grained finish sweeps across the instrument panel. There's also a folding centre armrest on the rear seat.

In both Fairmont models there is the finest expression of elegance in lighting. The whole car floor is flooded with light by opening any door. There's a dome light in the centre of the roof. Two rear passenger reading lights are also provided (Sedan only). To complete your driving pleasure there's a heater/demister, windshield washers, power disc brakes up front, balanced power-assisted rear brakes for maximum braking performance, "Super Pursuit 200" engine with Fordomatic "3S" 3-speed automatic transmission, and many other fine features (see below) as standard equipment.

With the Fairmont Station Wagon the deep cut-pile carpeting extends throughout the entire load area. As standard equipment the Fairmont Wagon also includes an electric tailgate window—you can raise or lower the window by pressing a switch from the driver's seat, or by turning a key in the tailgate.

Standard Feature Highlights:

- "Super Pursuit 200" engine.
- "Fordomatic 3S" 3-speed automatic transmission.
- Power disc front brakes.
- Balanced power-assisted rear brakes.
- Hand-brake warning light.
- Power operated tailgate window (Wagon).
- Fully padded dashboard and sun visors.
- Wood grain panelling on instrument panel.
- Wall to wall finest cut-pile carpets.
- Four courtesy floor lights.
- Two rear passenger reading lights (Sedan).
- "Doe Skin" expanded vinyl upholstery.
- Tied-down bolster design seating.
- Individual front seats with fully adjustable reclining mechanism.
- 6.45 x 14, 4-ply low profile black-wall tyres (Sedan 6.95 x 14, 4-ply, Wagon).
- Heater/demister.
- 2-speed electric windshield wipers.
- Windshield washers.
- Safety-type wheel rims.
- High fashion wheel covers.
- White, safety-type steering wheel.
- Choice of 8 exterior single-tone colours, including 6 lustrous metallics, in "Diamond Lustre" baked enamel.
- Choice of four "Doe Skin" vinyl colours with colour-keyed trims and headliners.
- Rear-seat centre armrest (Sedan).
- Ashtray in armrest on rear door.
- Extra sound-proofing and insulation completely surrounding the interior.
- "Back up" lights.



Above: Fairmont Sedan in Sunlit Beige Metallic.



Below: Fairmont Station Wagon in Ivy Green Metallic.

FALCON

SEDAN & STATION WAGON

The Falcon Standard Sedans and Station Wagons offer all of Falcon's new style, ride and engineering features . . . at the lowest price in their class.

You'll find lots of wonderful things to increase your motoring enjoyment, and please your sense of value.

As in every Falcon, strategic insulation and sound-proofing helps make the ride quiet and free from vibration. You'll like the more responsive performance from the standard 96-horsepower engine. The 6000-mile, or twice-a-year, routine servicing and lubrication periods. The deep, foam-cushioned seats. Long-lasting, easy-to-take-care-of "Ripple Weave" vinyl upholsteries. The increased luggage capacity with the new, upright positioning of the spare wheel (sedan), and the roll-down rear window (wagon).

Depending on whether you like to drive yourself, or let your Falcon do almost all of it for you, you can couple either manual or Fordomatic 2-speed automatic transmission to the engine of your choice.

Big 6.50-inch tyres . . . wrap-around deep-section front bumper . . . "Torque-box" chassis frame . . . your choice of 7 "Diamond Lustre" single-tone colours, plus 3 interior colour combinations . . . these, and many other items, add to your motoring investment. But, for the *complete* Falcon story, you should take a test-drive at your Ford Dealer's. It's the only real way for you to know *first-hand* how much more you stand to gain.

Standard Feature Highlights:

- Self-adjusting brakes that never need adjusting for the life of the brake-linings, and linings are bonded for up to 30% more life
- "Diamond Lustre" baked enamel for longer life, and less care in keeping its showroom shine
- Undercoating of all vital underbody parts, to protect against rust and corrosion
- Insulation and sound-proofing under the engine hood, and lining the interior, for exceptional quietness
- Dome light in centre of roof
- Safetytype wheel rims
- Safetytype steering wheel
- Safety glass
- Zone-toughened windshield
- 2-speed electric windshield wipers
- Improved performance 96-horsepower engine
- New, longer-lasting seat construction
- New designed muffler for more efficient engine performance and lower exhaust noise
- Roll-down rear window (Wagon)
- Protective rubber mat in cargo area (Wagon)
- Choice of 7 exterior colours
- Choice of single-tone and two-tone interior trims.



Above: Falcon Sedan in Powder Blue

Below: Falcon Station Wagon in Yellow Haze





FALCON

COMFORT & DRIVING EASE

Falcon's interiors are all-new. They're a beautiful combination of luxury and quality. Every appointment has been planned for your convenience and comfort.

The front seat is 2" wider for spacious comfort—even with 3 abreast—and now travels 1" further back to allow more leg room. Also, when the front seat is moved forward for a shorter person, it automatically moves higher to give a better view.

Thick layers of foam and wool cushioning provide deep-down luxury. New springing in the seat construction prevents seat "sag", and has a longer life.

All upholsteries and tailoring are equal to far more expensive cars—and more durable and easy to maintain. There's an almost endless range of colours and patterns to suit your taste and match your exterior colour choice. Interior paint is low-gloss to reduce inside reflections. A new, smarter instrument panel sweeps handsomely across the front. The steering wheel is of the deep-centre, safety-type design, and is 16" in diameter to allow plenty of leg room, and to let you slip easily into and out of the seat. Separate right and left turn-signal lights complement a full range of instruments, all fully-illuminated and individually marked for easy reading. The speedometer now reads to 120 mph.

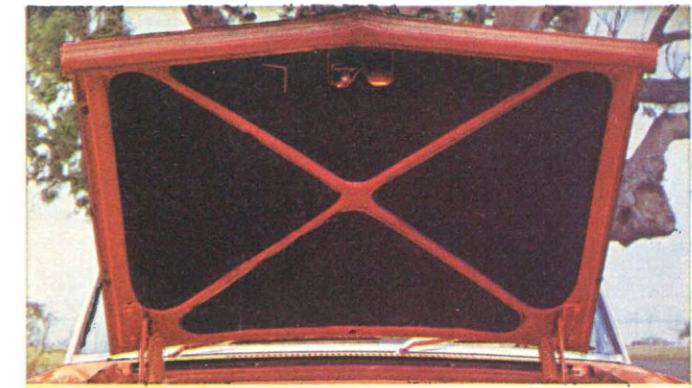
Travel is remarkably quiet. Insulating and sound-proofing materials completely surround the passenger compartment, even line the engine hood, to absorb noise before it enters the interior. Undercoating also deadens road noise, as well as protects against rust and corrosion.

In Deluxe Sedans and Station Wagons you have a choice of Falcon's "Fashion-Pak" consisting of "Majestic Cord" woven fabric seat inserts, carpeting and rear-door armrests; or carpeting; or the "Majestic Cord" fabric inserts. Falcon's "Majestic Cord" woven fabric inserts are treated with "SCOTCHGARD"—a patented water-and-oil-stain repellent—for long life and easy cleaning. The carpet is new, luxury twisted-loop pile, extremely durable and easy to care for.

Deluxe Interiors: Deluxe Sedan interior, shown top left in Palomino vinyl. Choice of 10 single-tone and two-tone interiors in vinyl or fabric and vinyl, (sedans and Wagons); 5 single-tone and two-tone all-vinyl interiors (Hardtop). Carpeting optional.

Futura Hardtop Interior: Shown bottom left in light and medium blue expanding vinyl. Also available in Red and Palomino. Carpeting, fully-padded instrument panel and sun visors, heater demister, wood-grain panelling on instrument panel and extra sound-proofing and insulation are standard equipment.

Fairmont Interior: Shown left in Champagne "Doe Skin" expanding vinyl. Seats recline individually, and are especially foam-cushioned and contoured for luxurious comfort. Carpeting, fully-padded instrument panel and sun visors, heater demister, wood-grain panelling on instrument panel and extra sound-proofing and insulation are standard equipment.



Sound-proofing completely lines the engine hood.



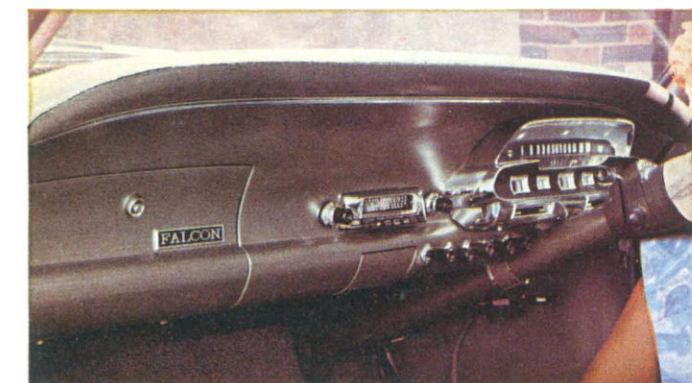
Interiors are completely insulated and sound-proofed.



All seats are deeply foam-padded.

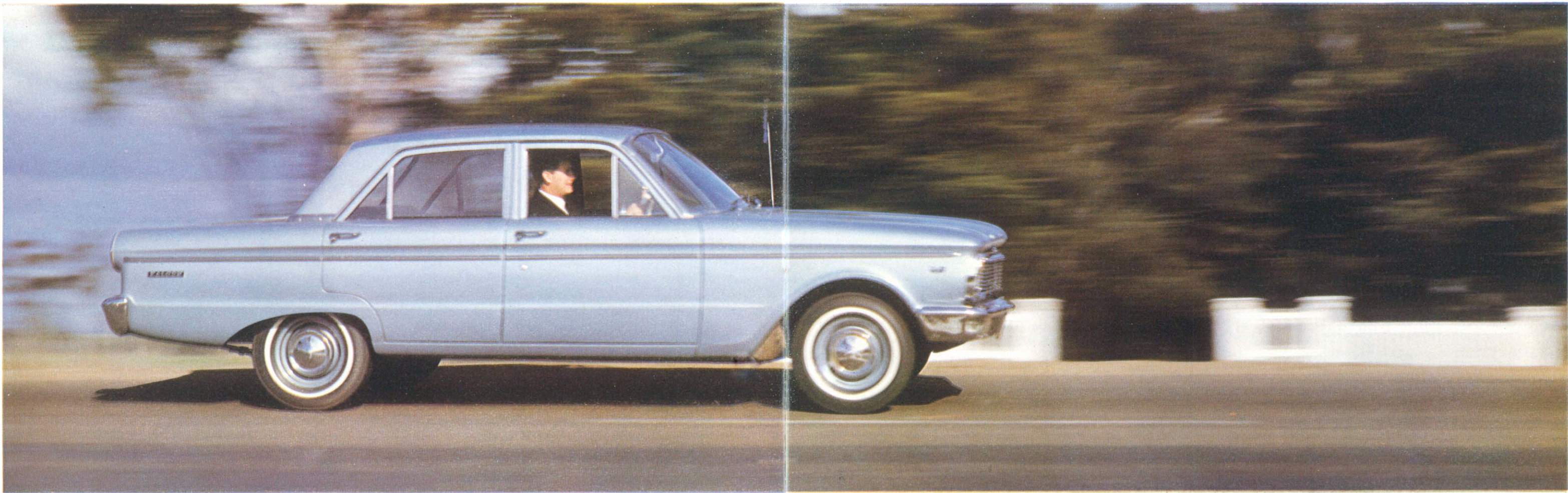


Undercoating protects all vital underbody parts.



A new instrument panel sweeps handsomely across the front.





FALCON TOTAL PERFORMANCE

The *total performance* of the new Falcon is something you can actually *feel* and appreciate. It is a benefit which shows up in the way the new Falcon clings to the road . . . brakes smoothly and quickly at your command . . . steers effortlessly with precision . . . delivers your power immediately . . . handles the roughest going with ease . . . and gives you unequalled economy.

Stronger . . . smoother . . . steadier! Several reasons contribute to Falcon's extra strength, solidity and riding smoothness. It has more steel in its body. Massive chassis-type frames welded into the body structure—known as "Torque-boxes"—run the entire length of the body under the passenger compartment. The suspension

system, including shock absorbers, has been refined, and made more rugged. Another important benefit you'll appreciate is Falcon's stance, or grip, on the road. In its field, Falcon gives you the best combination of long wheel-base, wide track and low centre of gravity.

Proven engines! Falcon's power comes from the most thoroughly proven 6-cylinder engines in Australia. You have a choice of three . . . the 96-horsepower with its great petrol economy . . . the lively "Pursuit 170" which also gives excellent economy . . . and the hottest of them all—the "Super Pursuit 200."

Each engine is electronically balanced to give smooth and quiet operation . . . and, in the factory, every engine is run for quality-testing before it is installed in a new Falcon.

Ease of control! Falcon's ease of control is the overall result of many Ford technical advances: the effortless steering which gives mile after mile of fatigue-free driving . . . the big fast-stopping brakes

which require only light pedal pressure . . . the all-round road vision . . . the balance of the whole car—and, of course, the flexibility and responsiveness of Falcon's engines.

Built for savings! The new Falcon requires routine maintenance and servicing by your Ford Dealer *only twice a year* or once every 6000 miles . . . brakes are self-adjusting . . . oil changes are only required each 6000 miles. Remember also—your new Falcon comes to you protected against rust and corrosion with a complete underbody dip, and undercoating of all vital underbody parts. If spare parts are needed, they're low-priced, and readily available . . . service is fast, and low in cost, through specially-trained mechanics at all Ford Dealerships.

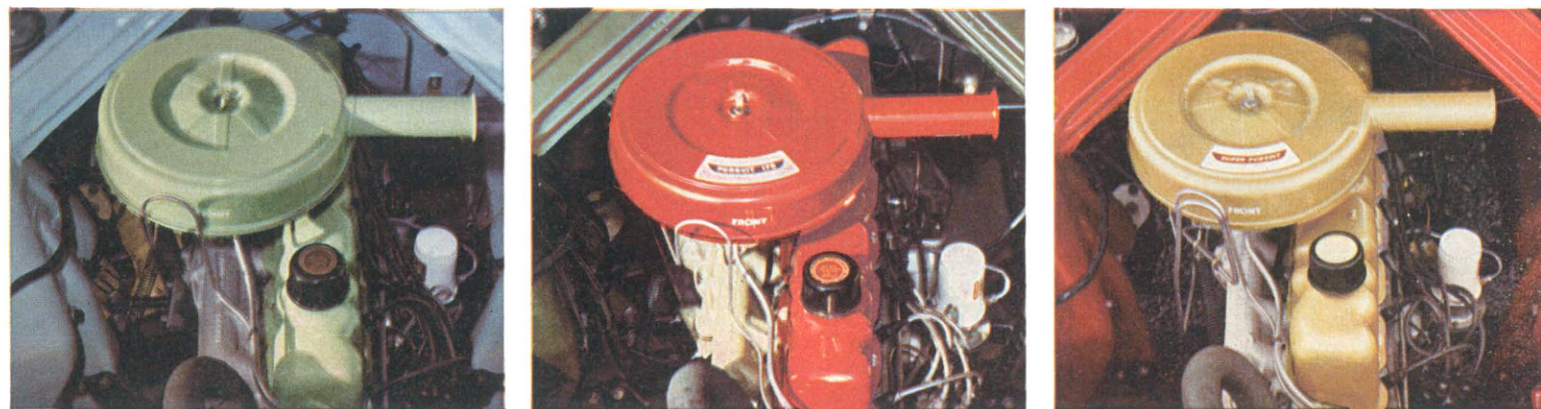
World's most famous Automatic Transmission! Fordomatic's reputation for smoothness, flexibility and complete

freedom from trouble is famous the world over . . . unequalled by any other automatic system.

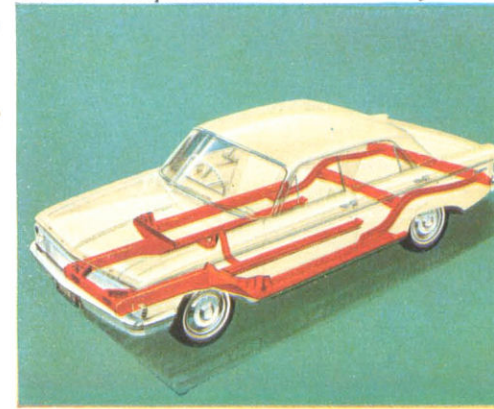
Today, Fordomatic's driving-ease, flexibility and economy has been taken even further. New "Fordomatic 3S" 3-speed automatic transmission adds an *even greater* responsiveness and power application to its smooth performance — and returns more miles to the gallon. It is available, and specially designed to team perfectly, with Falcon's "Pursuit 170" and "Super Pursuit 200" engines . . . gives you a triggered "kick-down" gear for split-second response and passing . . . and may be "locked" into second gear for heavy hauling, trailing, and extra-steep down-grades. The selector dial is illuminated for easy reading at night.

(Fordomatic 3S" 3-speed automatic transmission is optional on Deluxe Sedan, Deluxe Station Wagon, Deluxe Hardtop, Futura Hardtop, and is standard equipment on Fairmont models. Fordomatic 2-speed is optional on Standard Sedan and Station Wagon.)

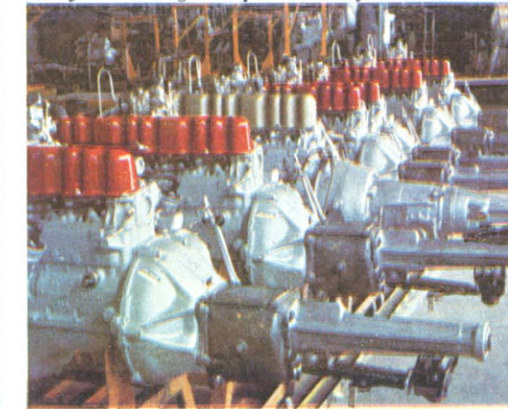
All Falcon engines are overhead-valve, "over-square" design for smoothness and economy.



Massive "Torque-boxes" are built into every Falcon.



Every Falcon engine is pre-tested before installation.



World-famous Fordomatic Drive is moderate extra cost.





Showroom shine that stays that way.

The new Falcons come with the toughest, most chip-resistant, most corrosion-resistant, paint finish ever developed by Ford. It's named "Diamond Lustre" because—like a diamond—it's beautiful to look at, outstandingly durable, and needs next-to-no-care. In fact, Falcon's "Diamond Lustre" paint needs only washing to retain its brilliance, plus a light polish twice a year.

For the technically-minded: Falcon's "Diamond Lustre" Baked Enamel is many skins deep. Under the coats of super enamel are no less than *four* stages of preparation, including a zinc-rich primer. These processes ensure perfect paint adhesion, and provide complete protection against rust for the body, interiors of doors, rocker panels and underpanels.



Fashion-Pak Interior — available at moderate extra cost on Falcon Deluxe Sedans and Station Wagons, consists of deep, twisted-loop pile wall to wall carpeting, luxurious "Majestic Cord" woven-fabric seat inserts, armrests on rear doors. Carpeting and woven-fabric seat inserts are also available individually.



POPULAR OPTIONS AND ACCESSORIES

Falcon's list of options and accessories allows you to *personalize* your new Falcon . . . and your Ford Dealer can deliver your new Falcon with whatever options and accessories you may like to order.

Padded Instrument Panel (Shown above). Luxuriously foam-padded and covered with vinyl, colour-keyed to blend with upholstery fabrics. **Padded Sun Visors** (not shown) combine with Padded Instrument Panel. Moderately priced. Standard equipment in Fairmont models.

Heater/Demister (3 control knobs shown right of ashtray in photograph above). All-new, 2-speed heater/demister — with fan. Fast warm-up. Quiet operation. Accurate temperature control.

Moderately priced. Standard equipment on Fairmont models.

Back-up Lights. Throw white beam for night-time reversing convenience. Low priced. Standard equipment on Fairmont models.

Fashion-Pak (shown bottom left on page 18). Makes your Falcon really luxurious. Consists of deep, twisted-loop pile wall-to-wall carpeting, "Majestic Cord" woven-fabric seat-inserts, armrests on rear doors. Moderately priced.

Carpeting. Available as a separate item. Standard equipment in Fairmont models.

"Majestic Cord" Upholstery. Available as a separate item.

Power operated Tailgate Window (Station Wagon). Electrically-operated. Makes raising or lowering the tailgate window so simple.

Operated by pressing a switch on the instrument panel, or turning a key in the tailgate. Standard equipment in Fairmont Station Wagon.

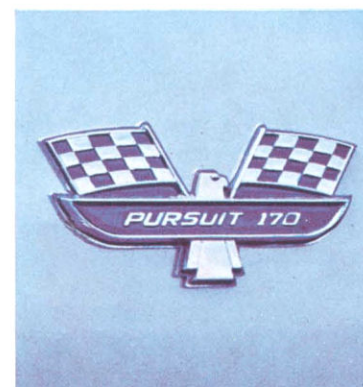
New "Fordomatic 3S" 3-speed automatic transmission. Available with "Pursuit 170" and "Super Pursuit 200" engines on Deluxe Sedan, Deluxe Station Wagon, Deluxe Hardtop, Fairmont Sedan, Futura Hardtop, and Fairmont Station Wagon models.

Fordomatic 2-speed automatic transmission. Available with "Pursuit 170" engine on Standard Sedan and Station Wagons only.

PLUS Exterior Sun Visor Weather shield (for right or left side) Exterior Rear Vision Mirrors in many styles Clear Plastic Seat Covers Venetian Shades (for both Sedans and Station Wagons) Roof Racks (Sedans and Station Wagons) Chrome Rocker Panel Fashion Kit Chrome locking fuel tank cap.

Option	Model Availability								
	Standard Sedan	Deluxe Sedan	Fairmont Sedan	Standard Wagon	Deluxe Wagon	Fairmont Wagon	Deluxe Hardtop	Futura Hardtop	
"Pursuit 170" engine Man.	R	R	NO	R	R	NO	X	X	
"Pursuit 170" engine Auto.	R	R	NO	R	R	NO	R	R	
"Super Pursuit 200" Auto.	NO	R	X	NO	R	X	R	R	
Two-tone Paint	NO	R	NO	NO	R	NO	NO	NO	
"Fashion-Pak"	NO	R	NO	NO	R	NO	NO	NO	
Carpeting	NO	R	X	NO	R	X	R	X	
"Majestic Cord" fabric	NO	R	NO	NO	R	NO	NO	NO	
Tinted Windshield	R	R	R	R	R	R	NO	NO	
Padded Instrument Panel and Sun Visors	R	R	X	R	R	X	R	X	
White-wall Tyres	R	R	R	R	R	R	R	X	
6-ply Black-wall Tyres	NO	NO	NO	R	R	NO	NO	NO	
6.45 x 14 4-ply B.S.W. Low Profile Tyres	NO	R	X	NO	R	NO	R	R	
6.95 x 14 4-ply B.S.W. Low Profile Tyres	NO	R	R	NO	R	X	R	R	
Back-up Lights	R	R	X	R	R	X	R	R	
Heavy-duty Battery	R	R	R	R	R	R	R	R	
Electric Tailgate	NO	NO	NO	R	R	X	NO	NO	

Code for chart above: "X" means fitted as standard equipment; "O" means optional for no additional cost; "R" means optional at extra cost; "NO" means option not offered on the particular model.



"Pursuit 170" Engine — extra-lively performance with excellent economy. Described fully in specifications.



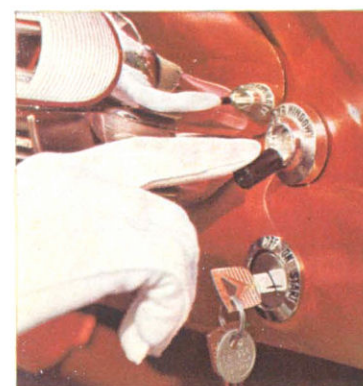
"Super Pursuit 200" — hottest performer of all — available only with "Fordomatic 3S" auto. transmission.



Push-button Radio — all-transistor, long range. Speaker mounted in top centre of instrument panel.



Deluxe Seat Belts — 3 styles: Lap, Lap and Diagonal Sash, or Sash. All to ASE35 Standard.



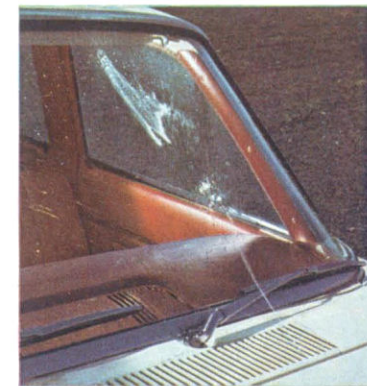
Electric Tailgate Window — optional on Deluxe Station Wagon, standard on Fairmont Wagon.



Trim Rings — either full-cover type as above, or other styles, and whitewall tyres.



Laminated Windshield — with graduated tint for reduced daytime glare without reduced night vision.



Windshield Washers — Deluxe, foot-operated type for your convenience. Cleans both sides of windshield.



FALCON SPECIFICATIONS

FALCON DESIGN: All new welded, integral body and frame for quietness and high strength-weight ratio. Roof cross brace at centre gives extra rigidity. Completely sealed and insulated. Rear-hinged counterbalanced hood with quick safety-type latch. Chromed one-piece front and rear bumpers. Corrosion-resistant heavily chromed steel grille. Bright-metal windshield and rear window mouldings. Cow-type ventilation system. Clear-view safety glass throughout. Wide Angle windshield with forward-sloping pillars. Large, wide-opening pillars, with assist-type door checks and bronze-bushed hinges. Double-grip safety door locks. Posture Control front seat, adjustable to 11 positions, total of 51 inches. Rear-mounted 117 gallon fuel tank with Centre-Fill fuelling (Sedan).

ENGINE: Standard 96 h.p. Overhead Valve Falcon Six—144 cu. in. displacement; 3,500 rev. to 2,500 stroke; 8.7:1 compression ratio; brake horsepower 96 at 4,200 r.p.m.; maximum torque 138 lb. ft. at 2,000 r.p.m. Optional "Pursuit 170" Six—170 cu. in. displacement; 3,500 rev. to 2,944 stroke; 8.7:1 compression ratio; brake horsepower 111 at 4,400 r.p.m.; maximum torque 156 lbs. ft. at 2,400 r.p.m. Low-silhouette unit-design carburettor, manual choke; full-vacuum spark control; integral cylinder head and 6-port intake manifold; precision-moulded crankshaft with four precision main bearings; rotor-type oil pump; oil capacity 3 quarts, with filter change, 4 quarts.

Optional "Super Pursuit" Engine (Standard equipment Fairmont models)—200 cu. in. displacement; 3,680 rev. to 3,126 stroke; 8.7:1 compression ratio; brake horsepower 121 at 4,400 r.p.m.; maximum torque 185 lbs. ft. at 2,400 r.p.m. Hydraulic valve lifters; automatic choke. **Special low-compression "944" engine—**variable speed orders only—compression ratio 7.5:1; brake horsepower 80 at 4,200 r.p.m.; max. torque 127 lbs. ft. at 2,000 r.p.m.

FEATURES: For economy and long life, the Falcon Six has Short Stroke, low-friction design; Wedge-type combustion chambers; Free-Turning overhead intake and exhaust valves; 3-ring aluminium-alloy pistons; Super-Filter air cleaner with re-usable dry-type element; fuel pump with integral 36,000 miles reverse. Shot-peened line-shaft helix gears for high strength and quietness with forged bronze synchronizers for smooth operation. Anti-friction bearings throughout. Standing "H" shift pattern with lever on steering column. Ratios (to 1): 1st 3.29, 2nd 1.83, direct 1.00, reverse 4.46.

CLUTCH AND MANUAL TRANSMISSION: Single cushion disc, dry-plate clutch for smooth engagement; aluminium housing; adjustable fingers; permanently lubricated ball-bearing type throw-out bearing; reinforced suspended clutch pedal for easy action. No draught hole in firewall. Face diameter 81 in. Total frictional area 68.1 sq. in. Conventional Drive has 3 forward speeds and 1 reverse. Shot-peened helix gears for high strength and quietness with forged bronze synchronizers for smooth operation. Anti-friction bearings throughout. Standing "H" shift pattern with lever on steering column. Ratios (to 1): 1st 3.29, 2nd 1.83, direct 1.00, reverse 4.46.

FORDOMATIC DRIVE (optional): Features simplified design, lightweight cast aluminium housing construction. Torque converter in combination with compound planetary gear set. **Fordomatic 2-speed—**Two forward gear ratios, one reverse (to 1); low 1.75, direct 1.00, reverse 1.50. "D" Drive range gives brisk, smooth shifting in low. Efficient braking in "L" (Low) position. Selector lever and quadrant on steering column, sequence L, D, N, R. **Fordomatic 3-speed (Standard equipment on Fairmont models)—**Three forward gear ratios, one reverse (to 1); low 2.39, intermediate 1.45, direct 1.00, reverse 2.09. "D" (Drive) gives fast, smooth starts in low. Effective engine braking in "L" (Low) position. Transmission may be "locked" in intermediate gear for extreme driving conditions and heavy towing. Selector lever and illuminated quadrant on steering column, sequence L, D, N, R, P.

REAR AXLE: Semi-floating type with offset hypoid gears. Overhung drive pinion. Induction-hardened forged shafts with permanently lubricated, double-

sealed ball-type bearing. Needle roller bearing universal joints. Axle ratio, 3.5:1 standard on "144" and "Pursuit 170" engines; 3.2:1 optional on "Pursuit 170" only, standard on "Super Pursuit 200".

FRONT SUSPENSION: Angle-Poised Ball-joint type with new rate coil springs pivot-mounted and rubber-insulated lower arms. Built-in anti-dive control. Internally mounted hydraulic double-acting shock absorbers with rebound cutoff. Front end has link-type, rubber-bushed ride stabilizer to control roll on turns. Tapered roller wheel bearings.

REAR SUSPENSION: Longitudinal, semi-elliptic leaf springs of asymmetrical design with rear axle located forward from centre of springs for anti-squat control on take-off. Provides soft-action, variable-rate with rubber bushed supports and compression-type shackles for soft, leveled ride. Axle nose bumper. Diagonally mounted hydraulic double-acting shock absorbers with improved valving.

STEERING: Magic-Circle low-friction recirculating-ball-type steering provides easy handling. Anti-friction bearings throughout. Symmetrical linkage. Overall steering ratio 27:1. Safety type 16", 2-spoke deep centre steering wheel, white with horn ring—Falcon Deluxe, Futura and Fairmont. Black with centre horn button—Falcon, Turning diameter 38 ft.

BRKES: Self-adjusting, double-sealed, self-energizing hydraulic brakes have suspended pedal and dash-mounted master cylinder. Composite drums, 9-in. diameter. Bonded linings, for up to 30% more lining life over riveted linings. Lining area is 131 sq. in. (Sedans), 157.2 sq. in. (Wagons). Offset "T" handle parking brake at right of steering column applies rear brakes. (Power disc front brakes and power-assisted rear brakes standard on Fairmont models).

TYRES: Black tubeless, on safety rims, 6.50 x 13, 4 ply, Sedans and Wagons. Pressed steel ventilated disc wheels. Spare wheel and tyre in well behind left-hand wheel arch in luggage compartment, Sedan; in well under floor of Station Wagon.

STANDARD EQUIPMENT: (Sedans and Wagons): Two sun visors. Arm rests on front seats. Rear compartment coat hooks. Two parallel-action, electrically operated windshield wipers of the 2-speed type. Inside rear-view mirror. Instrument panel with 120

m.p.h. speedometer, odometer, fuel gauge, temperature gauge, oil and generator warning lights, high-beam and separate "Right" and "Left" turn signal indicators in cluster, lighted control identifications, ash tray (second ash tray in back of front seat), glove box, dome light operated by headlight switch, also courtesy operated on Falcon Deluxe. Cigarette lighter (Falcon Deluxe). Sealed-beam, pre-focused headlights, wrap-around parking lights, tail-lights, with stoplights and amber turn indicator lights, number plate illumination light, color-keyed rubber floor covering. Rubber floor mat for load compartment.

STANDARD EQUIPMENT: (Futura Hardtop). As for Deluxe Sedan with these additions: Pursuit "170" engine. Fully carpeted floor. Padded instrument panel. Padded sun visors. Individually adjustable, deep-cushioned front twin seats. Exclusive interior leather-grained expanding vinyl trim design. Rear armrests incorporating ash trays. Wheel trim discs. White wall tyres. Dual horn.

STANDARD EQUIPMENT: (Fairmont Models). As for Deluxe Sedans and Wagons with these additions: Pursuit "200" engine. 3-speed automatic transmission. Power disc front brakes and power-assisted rear brakes. Fully carpeted floor (including load area in Wagon). Padded instrument panel with simulated wood graining. Padded sun visors. Fully trimmed interior with individually adjustable reclining twin front seats of deep plestered-cushion design. Rear seat centre armrest. Rear door armrests incorporating ash trays. Floor lights, reading lights, reversing lights and handbrake warning light. Wheel trim discs. Dual horn. Heater-demister. Windscreen washers. Power-operated rear window on Wagon. 6.45 x 14, 4 ply black wall tyres on Sedan and 6.95 x 14, 4 ply on Wagon.

WEIGHT: Kerb weight, approximate — 2,590 lbs. Sedans, 2,827 lbs. Wagons, 2,580 lbs. Hardtops. Add the following for extra equipment: Radio 7 lbs., heater 17 lbs., Fordomatic 3S 3-speed automatic transmission 35 lbs., approx.

DIMENSIONS: Overall length—Sedans 183.4", Wagons 183.1", Hardtops 183.1"; overall width—Sedans 70.3", Wagons 70.1", Hardtops 70.1"; overall height—Sedans 55.9", Wagons 55.9", Hardtops 54.1". Wheelbase (all models) a long 109.5"; track (front) 55", (rear) 54.5".

TWICE-A-YEAR MAINTENANCE: Falcons are designed to go 6,000 miles (or 6 months) between oil changes and minor chassis lubrications; 36,000 miles between major chassis lubrications. Other Falcon service-savings include: 36,000 mile fuel filter, self-adjusting brakes, rust and corrosion-resistant fully galvanised muffler; undercoating on all vital underbody parts, lubed-for-life steering linkage. Falcon needs so little service it's good sense to see that it gets the best — at your Ford Dealer's.

FORD 12/12 WARRANTY: For 12,000 miles or 12 months, whichever comes first, every Falcon is warranted against defects in materials or workmanship. This warranty covers both parts and labour. As a Falcon owner you remain responsible only for normal maintenance, and replacement of maintenance items.

FALCON'S 4-WAY BETTER SERVICE: Your satisfaction as a Falcon owner is increased by the after-sale service of Ford Falcon Dealers. It has four big advantages to you . . . Falcon Dealers send their mechanics to specialised Ford Falcon factory service schools . . . have time-saving equipment just right for Falcons . . . follow Ford Falcon factory-approved servicing methods . . . use genuine Falcon parts. Wherever you go, it keeps your car in top condition at minimum cost.

The specifications contained herein were in effect at the time this catalogue was approved for printing. Ford Sales Company of Australia Limited, whose policy is one of continuous improvement, reserves the right, subject to such regulations as may from time to time apply to change specifications and prices at any time without notice or incurring liability to purchasers. Some of the items illustrated or referred to are optional at extra cost.