

*KEHIDUPAN TANPA BATASAN*

# MAKE THE WORLD BIGGER



**ALL-NEW RAV4** | **FREEDOM SOPHISTICATED**  
*KEBEBASAN TERSENDIRI*



**TOYOTA**  
ALL ABOUT THE DRIVE

# POWER AS YOU PLEASE



Above all, the All-new RAV4 was designed to move exactly the way you want. Not only is driving made efficient; selected features put you in control of your vehicle's performance.

*Lebih daripada segalanya, RAV4 serba baharu direka untuk bergerak mengikut kehendak mu. Anda bukan saja menikmati pemanduan lebih cekap, ciri-ciri terpilih membolehkan anda mengawal prestasi kenderaan anda.*

**TNGA** Toyota  
New  
Global  
Architecture



## **TNGA Platform**

Provides a more stable yet exhilarating drive with optimal weight balance and a strong, well-designed vehicle body.

## **Platform TNGA**

Memberikan pemanduan stabil namun masih mengujakan dengan keseimbangan berat optimum serta rangka kereta yang lebih teguh dan direka mantap.

## **Trailing Wishbone Rear Suspension**

The trailing wishbone suspension has been developed to provide top-class shock reduction over uneven surfaces, resulting in superior riding comfort.

## **Ampaian Tulang Selangka Belakang**

Ampaian tulang selangka belakang ini dibina untuk memberikan pengurangan kejutan ketika di permukaan tidak rata, menghasilkan lebih keselesaan dalam perjalanan.

2.5<sup>Litre</sup> | 207<sup>PS</sup> | 243<sup>Nm</sup>  
 Max. Output | Max. Torque



**Dynamic Force Engine with VVT-iE**

Provides responsive acceleration with higher engine output along with combustion efficiency to deliver superior fuel economy.

*Enjin Daya Dinamik dengan VVT-iE*

Memberikan pemecutan responsif dengan output enjin lebih tinggi serta kecekapan pembakaran untuk penjimatan bahan api yang unggul.



**Direct Shift 8-speed Auto Transmission**

Offers impressive starting acceleration as well as fuel efficiency when cruising at high speeds.

*Transmisi Automatik Penganjak Langsung 8 Kelajuan*

Menawarkan pemecutan permulaan mengagumkan serta kecekapan bahan api apabila memandu pada kelajuan tinggi.



**Paddle Shifters**

Obtain maximum response and control with 8 gears you can manually shift to with your hands on the wheel.

*Padel Penganjak*

Dapatkan tindak balas dan kawalan maksimum dengan 8 gear yang boleh dianjak secara manual ketika tangan anda di stereng.



**Drive Mode (ECO & SPORT Mode)**

ECO mode maximises fuel efficiency while SPORT mode offers more engine response.

*Mod Pemanduan (Mod ECO & SPORT)*

Mod ECO memaksimumkan penjimatan bahan api manakala mod SPORT menawarkan lebih tindak balas enjin.



# STRIKINGLY FORMIDABLE

The All-new RAV4 was built to look aesthetically pleasing while still exuding impressive ruggedness.

*RAV4 serba baharu dibina untuk tampak menarik di mata dengan ketahanan yang menakjubkan.*



## LED Headlamps with Daytime Running Lights (DRL)

The design of the headlamps exudes a bold personality that matches the detailing throughout the vehicle.

*Lampu Utama LED dengan Lampu Terpasang Waktu Siang (DRL)  
Rekaan lampu utama menonjolkan personaliti berani yang sepadan dengan perincian di seluruh kereta.*



## Rear Combination Lamps

The uniquely distinctive shape and LED design inspire a sense of awe.

*Lampu Gabungan Belakang  
Bentuk dan rekaan LED unik dan tersendiri pasti menimbulkan rasa kagum.*



## 18" Alloy Rims

Ornate accents at the edge of the spokes hint at exclusivity while maintaining a tough, dynamic image.

*Rim Alooi 18"  
Hiasan menyerlah di hujung ruji menandakan keunikan sambil mengekalkan imej tahan lasak dan dinamik.*

# BIG ON LITTLE DETAILS

Be it for your comfort or aesthetic appreciation, no detail is too small when it comes to the All-new RAV4. Along with a design that evokes a sense of space, you can feel the atmosphere of a truly refined SUV.

*Tidak kira untuk keselesaan atau penghayatan estetik, tiada perincian yang terlalu kecil dalam RAV4 serba baharu ini. Dengan rekaan yang memberikan keselesaan ruang, rasailah suasana SUV yang diperhalus teliti.*



## Dual Zone Auto Air-conditioning

The driver and front passenger are able to set independent temperatures to suit their comfort levels.

*Penyaman Udara Automatik Dua Zon  
Pemandu dan penumpang hadapan boleh menetapkan suhu mengikut keselesaan masing-masing.*



## Rear Air-conditioning Vent

Not to forget the rear seat passengers, whose comfort is also conveniently provided for.

*Saluran Penghawa Dingin Di Belakang  
Tanpa melupakan penumpang belakang, keselesaan juga tersedia buat mereka.*



## 7" Colour Multi-information Display (MID) with Optitron Meter

The elaborately detailed meter offers excellent visibility and can switch between analogue and digital displays.

*Meter Optitron 7" dengan Paparan Pelbagai Maklumat  
Meter yang cukup terperinci ini menawarkan pandangan hebat yang boleh ditukar kepada paparan analog atau digital.*





### **Genuine Leather Seats**

The horizontal quilting adds refined texture to the high-quality material.

#### *Tempat Duduk dengan Kombinasi Kulit*

*Jahitan mendatar menambahkan kehalusan tekstur kepada bahan berkualiti tinggi.*

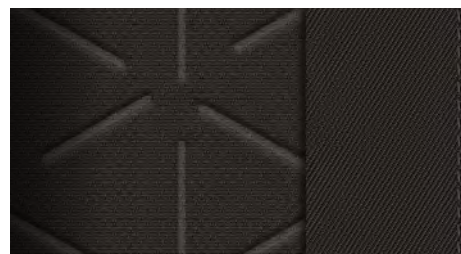


### **Memory Seat Button**

Saves up to two driver seat settings and activates those settings with a simple push of a button.

#### *Tempat Duduk Dengan Fungsi Memori*

*Menyimpan sehingga dua tetapan tempat duduk pemandu dan hanya satu butang diperlukan untuk mengaktifkan tetapan tersebut.*



### **Polygonal Motif**

This pattern is found throughout the vehicle, evoking both a sense of playfulness and toughness.

#### *Motif Poligon*

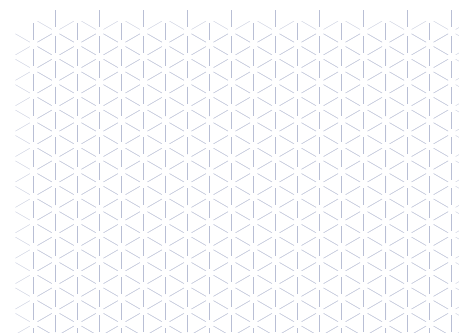
*Corak ini boleh didapati di serata kereta, menonjolkan ciri menyenangkan dan berketahanan pada masa yang sama.*

### **Smart Entry & Push Start System**

Push a button. That's all you need to do to enter your vehicle, and once more while depressing the brake pedal, to start it.

#### *Sistem Masukan dan Permulaan Pintar*

*Tekan saja butang untuk masuk ke dalam kereta. Tekan sekali lagi sambil menekan pedal brek untuk memulakan perjalanan.*



# CONFIDENCE TO STAY FOCUSED

With advanced safety technology, the All-new RAV4 takes care of your journey so you can focus on where you want to roam next.

*Dengan teknologi keselamatan yang canggih, RAV4 serba baharu akan menjaga anda di sepanjang perjalanan supaya fokus anda kekal pada destinasi seterusnya.*

## 360-T Advanced

It's all about Trust & Technology by Toyota

### SAFE-T

Trust for smoother journeys ahead



#### Blind Spot Monitor (BSM) with Rear Cross Traffic Alert (RCTA)

Detects vehicles that may not be visible to you when changing lanes or reversing, and alerts you.

#### Peninjau Titik Buta dengan Penggera Trafik Lintasan Belakang

Mengesan kenderaan yang mungkin tidak ternampak apabila anda menukar lorong dan mengundur, kemudian memberi amaran.



#### Front & Rear Digital Video Recorder (DVR)

Record your journeys for your protection should evidence be necessary.

#### Perakam Video Digital Hadapan & Belakang (DVR)

Merakam perjalanan anda untuk perlindungan sekiranya bukti diperlukan.



#### 3D Panoramic View Monitor (PVM)

Get a detailed 360° view of your vehicle for manoeuvring in tight spaces.

#### 3D Monitor Pandangan Panoramik (PVM)

Dapatkan pandangan 360° untuk mengawal haluan di ruang sempit.



#### Hill-start Assist Control (HAC)

Sustains brake pressure to prevent the vehicle from rolling backwards on an incline. Also active when the vehicle is in reverse gear.

#### Bantuan Kawalan Permulaan Bukit (HAC)

Mengekalkan tekanan brek untuk menghalang kereta daripada meluncur ke belakang ketika menaiki bukit. Ia juga diaktifkan apabila kereta dalam gear undur.

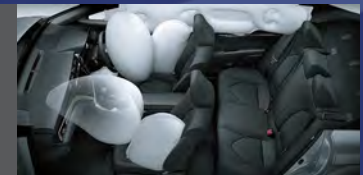


#### Vehicle Stability Control (VSC) with Traction Control (TRC)

VSC prevents side skids and helps stabilise the vehicle when turning on a curve. TRC applies the brakes or slows down the engine to regulate spinning and ensure proper contact of tyres.

#### Kawalan Kestabilan Kenderaan (VSC) dengan Sistem Kawalan Cengkaman (TRC)

VSC mencegah kegelinciran tepi dan membantu menstabilkan kenderaan ketika membelok. TRC akan membrek atau memperlambatkan kenderaan untuk mengawal pemusingan dan memastikan penyentuhan tayar yang sebetulnya.



#### 7 SRS Airbags

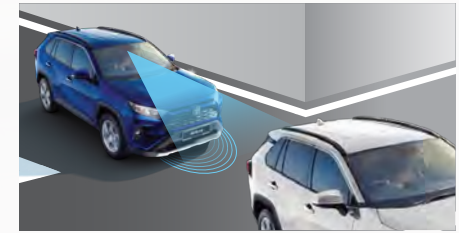
Driver, front passenger, side, curtain and driver's knee airbags provide complete protection for the driver and passengers in the event of a collision.

#### 7 Beg Udara SRS

Beg udara pemandu, bahagian penumpang hadapan, tirai dan lutut pemandu memberikan perlindungan menyeluruh buat pemandu dan penumpang sekiranya berlaku pelanggaran.

Toyota  
Safety  
Sense

TOYOTA  
SAFETY  
SENSE (TSS)



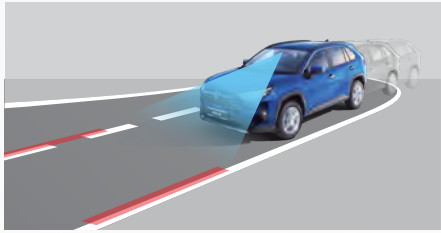
#### Pre-collision System (PCS)\*

Avoids or mitigates frontal collisions by alerting the driver and automatically applying the brakes when there is a risk of collision.

#### Sistem Pra Pelanggaran (PCS)\*

Dilengkapi dengan sistem amaran kepada pemandu dan juga sistem brek automatik apabila ia mengesan risiko pelanggaran.





### Lane Departure Alert (LDA)\*

Alerts and assists when you are out of the lane unintentionally. Less swaying, smoother driving.

### Isyarat Amaran Kegunaan Lorong (LDA)\*

Memberi isyarat dan membantu apabila kenderaan terkeluar lorong bagi memastikan kelancaran pemanduan.



### Lane Tracing Assist (LTA)\*

Keeps the vehicle centred either by detecting the lane or the preceding vehicle.

### Sistem Bantuan Dengan Pengawasan Kawalan Kegunaan Lorong (LTA)\*

Mengekalkan kenderaan di lorong tengah dengan mengesan laluan lorong ataupun kenderaan yang berada di hadapan.



### Dynamic Radar Cruise Control (DRCC) for All Speeds\*

Maintains a safe distance with the preceding vehicle and brakes automatically when the car ahead stops.

### Radar Dinamik Dengan Kawalan Suai Pandu (DRCC) untuk Semua Had Kelajuan\*

Mengekalkan jarak selamat dengan kenderaan hadapan dan brek secara automatik ketika kereta di hadapan berhenti.



### Automatic High Beam (AHB)\*

Automatically switches between high beam and low beam as needed to provide maximum road visibility.

### Cahaya Automatik Lampu Alur Tinggi\*

Penukaran automatik antara cahaya alur tinggi dan cahaya alur rendah ketika diperlukan untuk memberi penglihatan jalan raya yang maksima.

*\*Driver remains solely responsible at all times for safe driving.*

*\*Pemandu bertanggungjawab sepenuhnya untuk memastikan pemanduan selamat pada setiap masa.*

## CONNECTIVI-T

Technology at your command



### Tyre Pressure Warning System

Notifies you when tyre pressure is below an acceptable level, indirectly helping you maintain optimum fuel efficiency at all times.

### Sistem Pemantau Tekanan Tayar

Sistem berfungsi untuk memberi notifikasi apabila tekanan tayar di bawah tahap yang sepatutnya dan membantu untuk mengekalkan kecekapan bahan api pada kadar optimum.



### Apple CarPlay & Android Auto-ready Connectivity\*

7" touch screen display with real-time navigation and music options. Selectable via built-in controls or smartphone.

### Paparan Audio dengan Keterkaitan Apple CarPlay dan Android\*

Paparan skrin 7" dengan navigasi masa nyata dan pilihan muzik. Boleh dipilih dengan kawalan terbina dalam atau telefon pintar.



### Wireless Charger

Offers convenient charging for Qi\*\* standard-compliant devices, without the use of a cable.

### Pengecas Tanpa Wayar

Memberikan pengecasan mudah untuk peranti yang patuh standard Qi\*\*, tanpa menggunakan kabel.



### USB Charging Ports

Conveniently located ports allow the driver and passengers to easily charge their devices.

### Port Pengecasan USB

Port yang terletak mudah untuk membolehkan pemandu dan penumpang mengecas peranti mereka.



### Vehicle Telematics System (VTS)

An integrated system that monitors and shares your vehicle's real-time location through a mobile app.

### Sistem Telematik Kenderaan (VTS)

Sistem menyeluruh yang mengawasi dan berkongsi lokasi semasa kereta anda melalui aplikasi mudah alih.

## GUARAN-T

Total peace of mind



5 years warranty from the date of first registration with unlimited mileage. Terms and conditions apply.

Waranti 5 tahun daripada tarikh pendaftaran dengan jumlah batuan tanpa had. Tertakluk kepada terma dan syarat.

*\*Android Auto™ will be available when the service is officially launched in Malaysia. Functions may vary depending on smartphone model.*

*\*\*International standard for wireless charging developed by Wireless Power Consortium.*

*\*Android Auto™ akan ditawarkan semasa pelancaran rasmi di Malaysia. Fungsi mungkin berbeza mengikut model telefon pintar.*

*\*\*Standard antarabangsa untuk pengecasan tanpa wayar oleh Wireless Power Consortium.*

# THE SIMPLICITY OF CONVENIENCE

From front to back, the All-new RAV4 was designed to make your day just that little bit easier.

*Setiap inci RAV4 serba baharu direka untuk memudahkan hari anda.*



## Colour Options



Dark Blue Mica (8X8)



Red Mica (3T3)



White Pearl CS. (070)



Silver Metallic (1D6)



Gray Metallic (1G3)



Attitude Black (218)



#### **Cup Holders**

Located at the centre tray and rear armrests for your convenience.

#### **Pemegang Cawan**

Terletak di rak tengah dan tempat letak lengan belakang untuk kemudahan anda.



#### **Front Overhead Console**

Provides easy access to your sunglasses.

#### **Konsol Atas Hadapan**

Menyediakan akses mudah untuk kaca mata hitam anda.



#### **Kick-sensor Power Back Door**

Automatically open and close the back door by performing a kick motion under the rear bumper.

#### **Pintu Belakang Kuasa dengan Pengesan Sentuhan Kaki**

Buka dan tutup pintu belakang secara automatik dengan sentuhan ringan hujung kaki ke bahagian bawah bampar belakang.



#### **Best-in-class Space**

Provides adjustable space to accommodate various types of loads.

#### **Ruang Terbaik dalam Kelasnya**

Memberikan ruang boleh laras untuk menempatkan pelbagai jenis bebanan.



#### **2-level Floor with Reversible Board**

The floorboard can be lowered to another level to fit taller luggage and flipped over to a waterproof surface to store wet items.

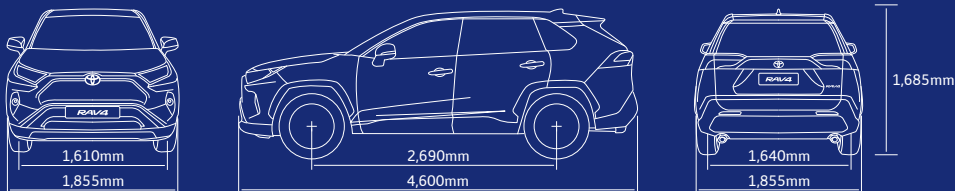
#### **Lantai 2 Aras dengan Papan Bolehbalik**

Papan lantainya boleh direndahkan untuk memuatkan bagasi lebih tinggi dan dibalikkan ke permukaan kalis air untuk menyimpan barangan basah.

# SPECIFICATIONS

VARIANT	2.5L	2.0L
Model Code	AXAA52R-ANZGB	MXAA52R-ANXGB
<b>ENGINE</b>		
Model	A25A-FKS	M20A-FKS
Type	4-cylinder, In-line, 16V, DOHC with VVT-iE (Intake) and VVT-i (Exhaust)	
Displacement	cc (mm)	2,487
Max. Output	kW (PS) / rpm	152 (207) / 6,600
Max. Torque	Nm / rpm	243 / 5,000
Drivetrain	Front Wheel Drive (FWD)	
<b>TRANSMISSION</b>		
Type	Direct Shift 8-speed AT with Sequential Shiftmatic	CVT with Sequential Shiftmatic
Paddle Shifters	With	
<b>CHASSIS</b>		
Suspension	Front / Rear	MacPherson Strut with Stabiliser / Trailing Wishbone with Stabiliser
Brakes	Front / Rear	Ventilated Disc / Solid Disc
Tyres & Rims	225/60R18, Alloy	
Spare Tyre	Temporary Tyre (165/80R17, Steel)	
Steering	Electric Power Steering	
<b>MEASUREMENTS</b>		
Overall Dimension (Length x Width x Height) (mm)	4,600 x 1,855 x 1,685	
Gross Vehicle Weight	(kg)	2,125
Kerb Weight	(kg)	1,620
Fuel Tank Capacity	(litre)	55
Min. Turning Radius	(m)	5.5
<b>EXTERIOR FEATURES</b>		
Headlamps	Type	Automatic LED with Follow-me-home Function & Turn Signal
	Levelling	Automatic
	Daytime Running Lights (DRL)	With (LED)
Rear Combination Lamps	LED Tail and Stop Lamp	
Wiper	Front / Rear	Automatic with Rain Sensor / Intermittent
Fog Lamps	Front and Rear	
Antenna	Shark-fin Type	
Roof Rails	With	
Wing Mirrors	Power-adjustable with LED Turn Signal Lamp	
Rear Spoiler	With	
Power Back Door	With (Kick-sensor)	

## DIMENSIONS



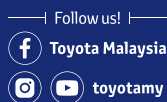
INTERIOR FEATURES		
Smart Entry and Start System		With
Drive Mode		With (NORMAL, ECO and SPORT)
Meter Panel		Optitron (With option to switch to Analogue or Digital type)
Multi-information Display (MID)		7" Colour TFT
Air-conditioning		Dual Zone Automatic Climate Control with Seat Ventilation (Driver & Front Passenger Only)
Steering Wheel	Type	3-spoke Leather with Tilt and Telescopic Adjustable
	Switches	Audio, MID, Telephone and Adaptive Cruise Control & Lane Tracing Assist
Shift Lever		Leather
Power Window		Front and Rear with Auto Up/Down & Jam Protection (All Windows)
Audio	Type	DVD Player 7" Touch Screen Display with Apple CarPlay & Android Auto-ready Connectivity
	Speakers	6
Seats	Material / Colour	Combination Leather / Black
	Driver Seat	8-way Power-adjustable with Seat Lumbar Support & Memory
	Front Passenger Seat	Manual Adjust
	Rear Seat	60:40 Split Foldable with Reclining Function
	Rear Armrest	With Cupholders
Inside Rear View Mirror		Electrochromic Mirror
Wireless Charger		With
USB Charging Ports		With
Illuminated Entry System		With (Push Start, Room, Foot, Cupholders and Tray)
3D Panoramic View Monitor (PVM)		With
Digital Video Recorder (DVR)		With (Front and Rear)
Tonneau Cover		With
Cargo Floor Board		With (Adjustable 2-level Floor & Reversible Board)
<b>SAFETY</b>		
Toyota Safety Sense	Pre-collision System (PCS)	With
	Lane Departure Alert (LDA)	With Steering Assist and Lane Tracing Assist (LTA)
	Dynamic Radar Cruise Control (DRCC)	With (All Speeds)
	Automatic High Beam (AHB)	With
Blind Spot Monitor (BSM)		With Rear Cross Traffic Alert (RCTA)
Vehicle Stability Control (VSC)		With Traction Control (TRC) and Trailer Sway Control
Anti-lock Brake System (ABS)		With Electronic Brake-force Distribution (EBD) and Brake Assist (BA)
Hill-start Assist Control (HAC)		With
Emergency Stop Signal (ESS)		With
Parking Sensors		With (Front and Rear)
Parking Brake		Electric Parking Brake (EPB) with Automatic Brake Hold
Tyre Pressure Warning System		With
SRS Airbags		7 (Front, Front Side, Curtain and Driver Knee)
Seat Belts	Warning	Driver and Front Passenger
	Front	3-point ELR x 2 with Pretensioner and Force Limiter
	Rear	3-point ELR x3
ISOFIX		With (Rear Only)
<b>SECURITY</b>		
Alarm System		Immobiliser, Cabin Sensor and Speed Auto Door Lock
Toyota Premium Security & Solar Film		With
Vehicle Telematics System (VTS)		With



5 years warranty from the date of first registration with unlimited mileage. Terms and conditions apply.



For Your Auto-Financing Needs



- UMW Toyota Motor reserves the right to alter any details of specifications and equipment without notice.
- Details of specifications and equipment are also subject to change to suit local conditions and requirements.
- Vehicle and specifications in this catalogue may vary from models available locally.
- Vehicle body and accessory colours might differ slightly from the printed photos in this catalogue.
- All images used are for illustrative purposes.

For more information, please contact:

M04/Y20