

The Sorento HEV

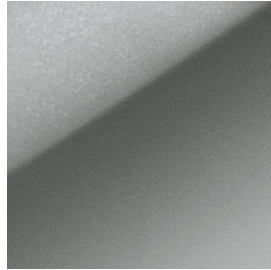


Movement that inspires

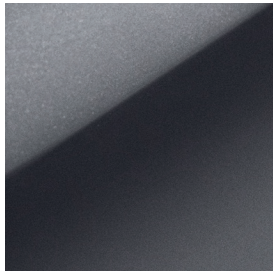
Exterior colours



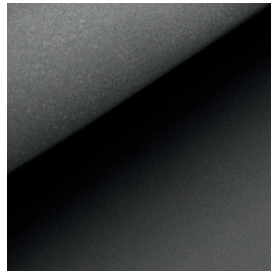
Snow White Pearl



Steel Grey*



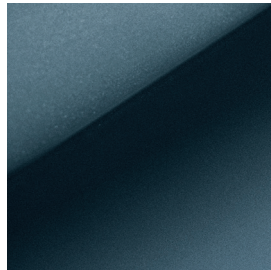
Platinum Graphite



Aurora Black



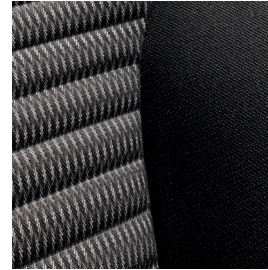
Runway Red*



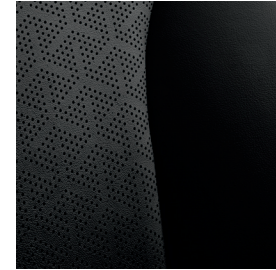
Mineral Blue*

*Colour not available on LX models. Some seating, paint and trim configurations may be limited. Visit kia.ca for full details.

Interior colours



Black cloth



Black leather (synthetic)

Wheels



17" machined-finish
Aero wheels



19" machined-finish
Aero wheels

Features

LX

EXTERIOR

- 17" machined-finish aero wheels
- Temporary spare tire
- Automatic headlights
- LED MFR headlights
- LED positioning lights
- LED daytime running lights
- Solar glass windshield and front doors
- Sound-reducing windshield
- Privacy tinted rear door glass
- Power and heated sideview mirrors with signal repeaters
- Body coloured sideview mirrors
- Body coloured door handles
- Rear spoiler
- Silver painted front and rear skid plates
- Trailer lighting pre-wiring
- Splash guards

SAFETY

- 7 airbags
- Electronic stability control (ESC)
- 4-wheel anti-lock braking system (ABS)
- Hill-assist control (HAC)
- Downhill brake control (DBC)
- Smart high beam assist (HBA)
- Forward collision-avoidance assist (FCA)¹
- Lane keeping assist system (LKA)¹
- Lane following assist (LFA)¹
- Trailer stability assist (TSA)¹
- Tire pressure monitoring system (TPMS)
- Immobilizer
- Rearview camera¹
- Rear parking sensors¹
- Low washer fluid warning indicator

TECHNOLOGY

- Multi-zone automatic climate control
- 8" Display audio
- 6-speaker audio
- AM/FM/MP3/HD radio
- Front and rear USB charging ports
- Bluetooth® hands-free cell phone connectivity^{2,6}
- Apple CarPlay® and Android Auto™ smartphone integration^{2,7,8}
- 4.2" Supervision LCD/TFT instrument cluster
- Trip computer
- Steering wheel-mounted audio controls
- Keyless entry
- Electronic parking brake with auto hold function
- Steering wheel mounted paddle shifters
- 12V cabin and cargo power outlets
- Cruise control
- Intelligent speed limit assist (ISLA)¹
- Wireless phone charger²
- Express up/down driver window
- Obstacle-detecting driver window
- Drive/Terrain Mode Select

COMFORT

- 6-passenger seating with 2nd row captain's chairs
- Cloth seats
- Easy walk-in 2nd row
- 50:50 split-folding 2nd and 3rd row seats
- 2nd row sliding and reclining seats
- Height adjustable driver's seat
- Front seat back pockets
- Remote folding 2nd row seats
- Heated front seats
- Tilt and telescopic steering wheel
- Heated steering wheel
- Leather-wrapped steering wheel
- Metal painted interior door handles
- Illuminated vanity mirrors
- Deluxe pedals
- Net hooks

EX - adds to or upgrades from LX

EXTERIOR

- 19" machined-finish aero wheels
- Full LED headlights
- Roof rails

SAFETY

- Blind spot collision avoidance assist¹
- Rear cross-traffic collision avoidance assist¹

TECHNOLOGY

- Smart key with push-button start
- SiriusXM® satellite radio⁵
- UVO Intelligence™ connected car services^{2,4}
- Auto-dimming rearview mirror
- HomeLink® system⁹
- Smart power liftgate

COMFORT

- Leather seats (synthetic)
- Power adjustable driver's seat
- 2-way driver's seat lumbar support
- Power adjustable passenger seat



Movement that inspires

Specifications

Mechanical

Engine type / Electric motor	1.6L Turbo HEV / permanent magnet synchronous motor
Configuration	Inline 4 cylinder, GDI
Horsepower (combined)	227 hp
Torque	258 lb-ft.
Transmission	6-speed automatic
Fuel system	Gasoline direct injection (GDI)
Drive type	All-wheel drive (AWD)
Recommended fuel	Regular unleaded

Battery performance

Battery	270 Volt / 64kW (discharge) / 49kW (charge)
Chemistry	Lithium ion polymer

Measurements

Towing capacity ¹⁰	2,000 lb
Fuel tank capacity	67 L
Cargo capacity (behind 1 st row)	2,139 L (75.5 cu. ft.)
Cargo capacity (behind 2 nd row)	1,090 - 1,274 L (38.5 - 45 cu. ft.)
Cargo capacity (behind 3 rd row)	357 L (12.6 cu. ft.)

Fuel consumption

City / Highway (L/100km)	6.4 / 7.0
--------------------------	-----------

Please visit kia.ca for full vehicle specifications.



Movement that inspires

We've got you covered¹¹

Kia engineers are passionate about producing vehicles that are exceptionally well-designed and reliable. Their dedication to quality and attention to detail give Kia the confidence to back every model with an outstanding warranty program.



**5-year/
100,000 km**

Worry-free comprehensive warranty



**5-year/
100,000 km**

Limited powertrain warranty



**8-year/
150,000 km**

Limited EV components warranty



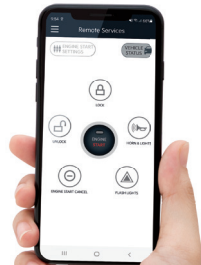
**5-year/
unlimited km**

24-hour roadside assistance

UVO | Intelligence™

It connects, checks, finds and reminds - from the convenience of your smartphone^{1,3,5}

Free for the first three years. Available feature. See features page or visit kia.ca for full details.



(((SiriusXM®)))

With your new vehicle, enjoy access to SiriusXM® satellite radio from anywhere you go - while you're on the road, using the smartphone app, online, or even through your smart TV.

Free for the first 3 months. Available feature. See features page or visit kia.ca for full details.



1. None of the features we describe are intended to replace the driver's responsibility to exercise due care while driving and are not a substitute for safe driving practices. Some features may have technological limitations. For additional information regarding the various features, including their limitations and restrictions, please refer to your vehicle's Owner's Manual. 2. Compatible smartphone required. Data rates may apply, please check with your wireless service provider. For wireless charging, certain smartphones may require a wireless charging-compatible case. 3. When equipped with the navigation system, French voice commands may be limited. 4. UVO Intelligence only available on select models and trims. Specific functionality may vary between models and trims. Destination Search is only available on vehicles with a navigation head unit. Certain functions are only accessible on the smartphone app and/or customer web portal and/or in-vehicle head unit. Service is free for the first three years from the day the vehicle was first registered. Monthly subscription may be applicable after the free period. Please consult your dealer for details. 5. SiriusXM satellite radio service includes 3 month trial and is available in the 10 provinces and three territories of Canada, and the 48 contiguous states of the U.S. Monthly subscription sold separately after three trial months. 6. The Bluetooth word mark and logos are registered trademarks owned by Bluetooth SIG, Inc. 7. Apple, the Apple logo, CarPlay, and iPhone are trademarks of Apple Inc., registered in the US and other countries. App Store is a service mark of Apple Inc. 8. Google, Google Play, Google Maps, and Android Auto are trademarks of Google Inc. 9. HomeLink is a registered trademark of Johnson Controls, Inc. 10. When properly equipped. Do not exceed any weight ratings and follow all towing instructions in your Owner's Manual. 11. The Kia 5-year/100,000-km warranty includes various warranties and roadside assistance. Some restrictions apply. For more information call us at 1-877-542-2886 or visit to kia.ca.

We make every effort to ensure that the product information in this brochure is accurate at the time of printing. Occasional changes in production, that affect the standard or optional equipment included on a specific model, may occur after printing which will not be reflected in this brochure. Kia Canada Inc. reserves the right to make these changes without notice or obligation. For this reason, please rely on kia.ca or your local Kia dealer for the very latest product information. Some vehicles shown may include optional equipment or may not be exactly as shown. Kia Canada Inc., by the publication and dissemination of this material, does not create any warranties, either expressed or implied, to any Kia products. Reproduction of the contents of this material without the expressed written approval of Kia Canada Inc. is prohibited. © Copyright 2021 Kia Canada Inc.