

DODGE



**DODGE**

*for* **1938**

*“ More people buy Dodge cars than any  
other make except the lowest priced cars ”*

# PERFECT STYLING ·· LAVISHLY EQUIPPED INTERIORS ·· UNSURPASSED RIDING COMFORT

More luxurious . . . More smartly styled than ever . . . Rich with new appointments, Dodge—the greatest medium-priced seller in the world—scores another outstanding success with its brilliant new 1938 Series.

For 24 years Dodge has held an unique position in the motor car industry. Introduced to the motor world when there was much to be desired in reliable, economical and lasting performance, it quickly won success for its absolute dependability.

Much progress has been made in the motor car industry since that early day, progress with which Dodge has been closely identified. Acclaimed as a leader in style, Dodge continues its well-earned reputation for performance, dependability and economy, proving once more that "beauty" and "value" need not be strangers.

Your eye tells you that this perfect Dodge styling makes it a safe

investment for future days. Its lavish appointments and mechanical perfection tell you that there is a car that will give you many pleasant years of comfortable and luxurious motoring.

## 2 Models for 1938—D 8 and D 9

The Dodge 1938 range comprises D8 Touring Sedan, 7-Passenger Sedan and Universal Coupé: D9 Touring Sedan and Universal Coupé. The new series are distinguished in their up-to-date streamlining and graceful contours. Dodge design is inherently sound while its many proven superior engineering features make it the safest car on the road.

## Brilliant new Bodywork—Lavish Appointments

Outstanding in this new series is the perfect styling and luxury of the bodywork. Comfort and genuine relaxation are the key-notes. The immensely strong "Unitop Safe-T-steel" body

DODGE · BUILDERS OF GOOD CARS SINCE 1914

with redesigned steel floor has still further improved insulation, eliminating road and tyre noise and offering ample protection against heat, cold and dust.

Door locks and dovetailing have been redesigned for smoother and easier operation.

An entirely new all-steel adjustable front seat is introduced with deep, restful cushions moulded to the right body contours. The back is tufted and rolled for added protection against sudden emergency stops. The rear seating is roomier and deeper while the rich leather upholstery with its correctly designed pleating offers genuine relaxation.

The striking new instrument panel with large dials and recessed knobs has been raised in the interest of greater safety, while the recessed controls are centrally located within easy reach.

### **Wide, full-vision windows and ventilation**

Windows are conveniently set at full vision height, the front doors having ventilating wings on both D8 and D9 models. Wide drip mouldings extend over all doors and well back from the rear windows in a graceful curve. In the D8 the rear side windows open outwards.

Controls, hardware and ash receivers are Tenite finished in perfect harmony with the rich two-tone interiors.

In the D8, modern interior lights are conveniently placed—a courtesy switch operates with the rear door and there is a centre arm rest wide enough to accommodate the arms of both passengers.

### **Performance with Economy**

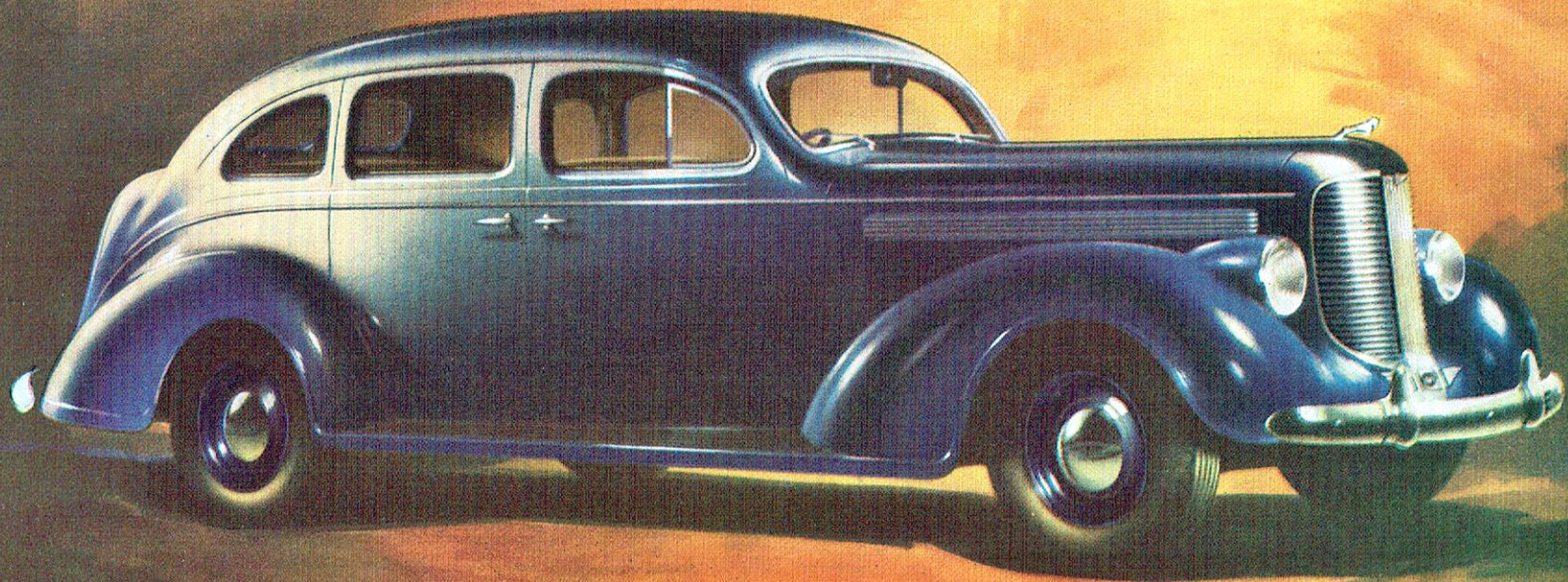
Always famous for Performance, the 1938 Dodge shows even greater flexibility for to-day's traffic conditions—yet, the famous L-head engine delivers an abundance of power with sparkling acceleration.

Even weight distribution permits correct “timing” and synchronised springing which, together with double action shock absorbers, cushion the roughest roads and result in exceptional tyre mileages.

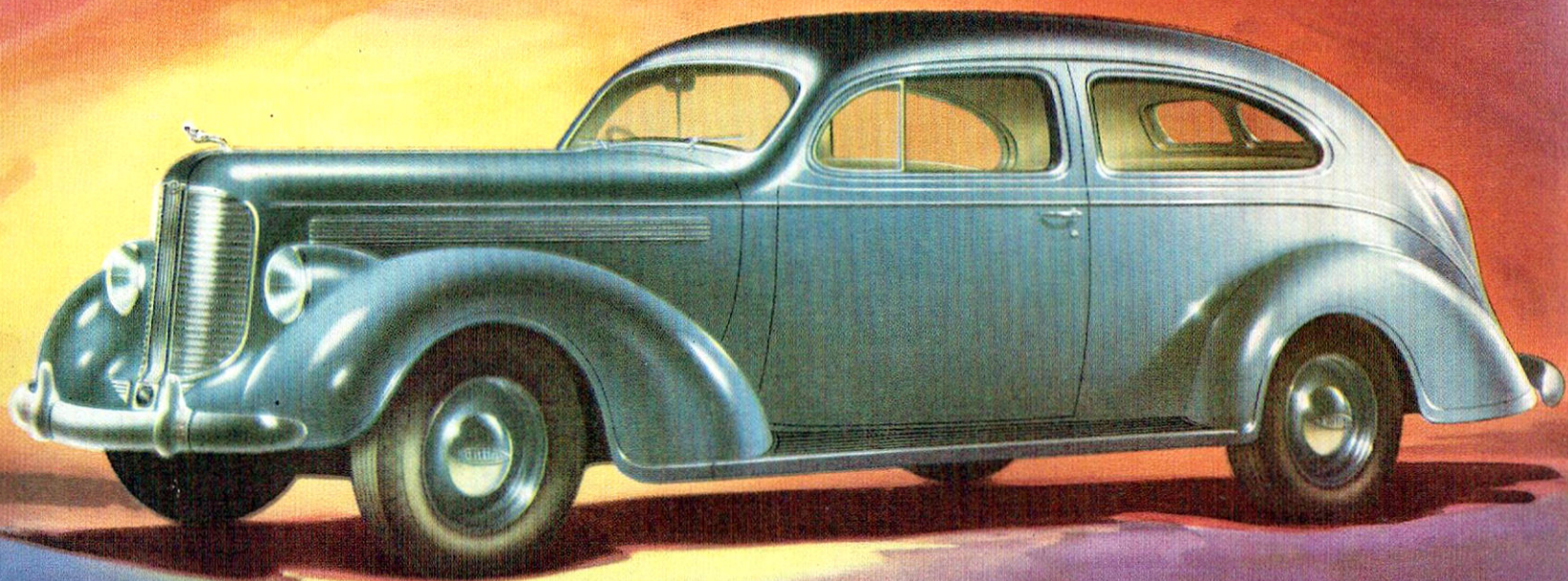
The high fuel mileage and low oil consumption of the famous Dodge engine are well known and the new cars retain such proven features as full pressure lubrication, full-length water jackets, directional cooling, hardened exhaust valve seats.

The rigid X-type Dodge frame has been still further improved and the all-steel body is mounted on live rubber. The power plant has patented “Floating Power” rubber mountings. The luggage trunk is roomier and has an automatic interior light operating with the balanced lid. The spare tyre and wheel are vertically mounted inside the trunk. There is a special compartment for tools.

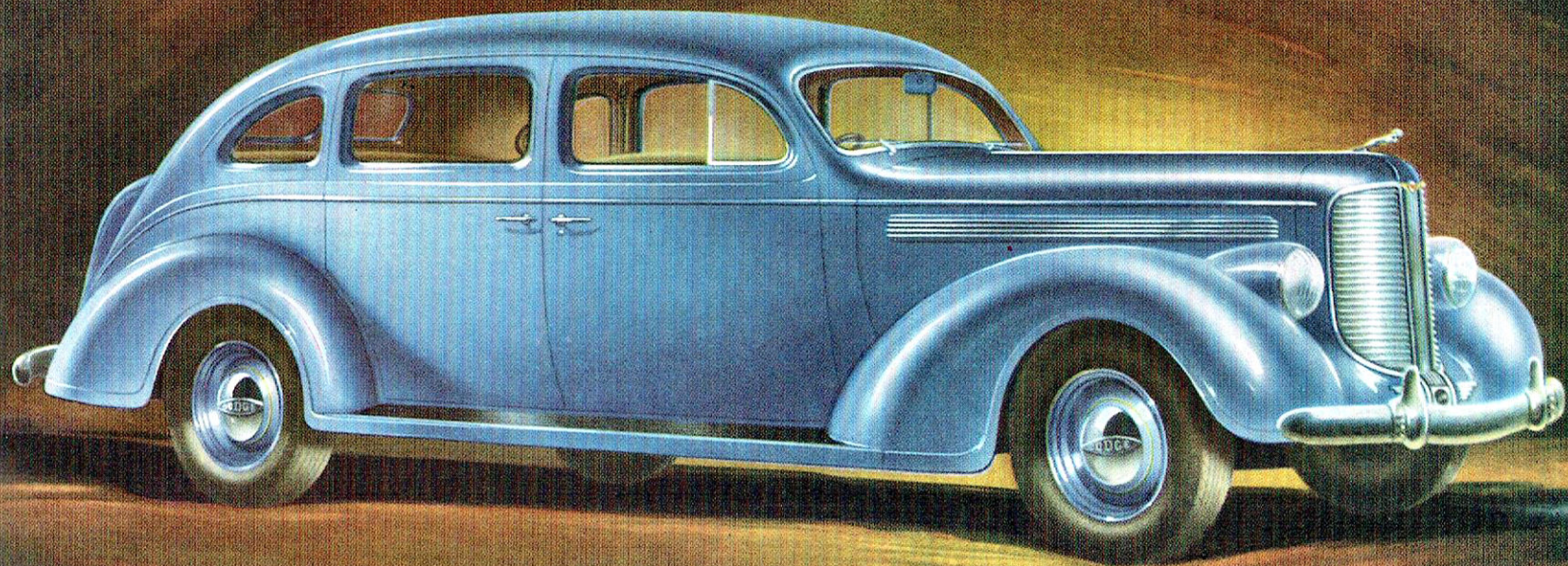
**THINK OF DEPENDABILITY YOU THINK OF DODGE**



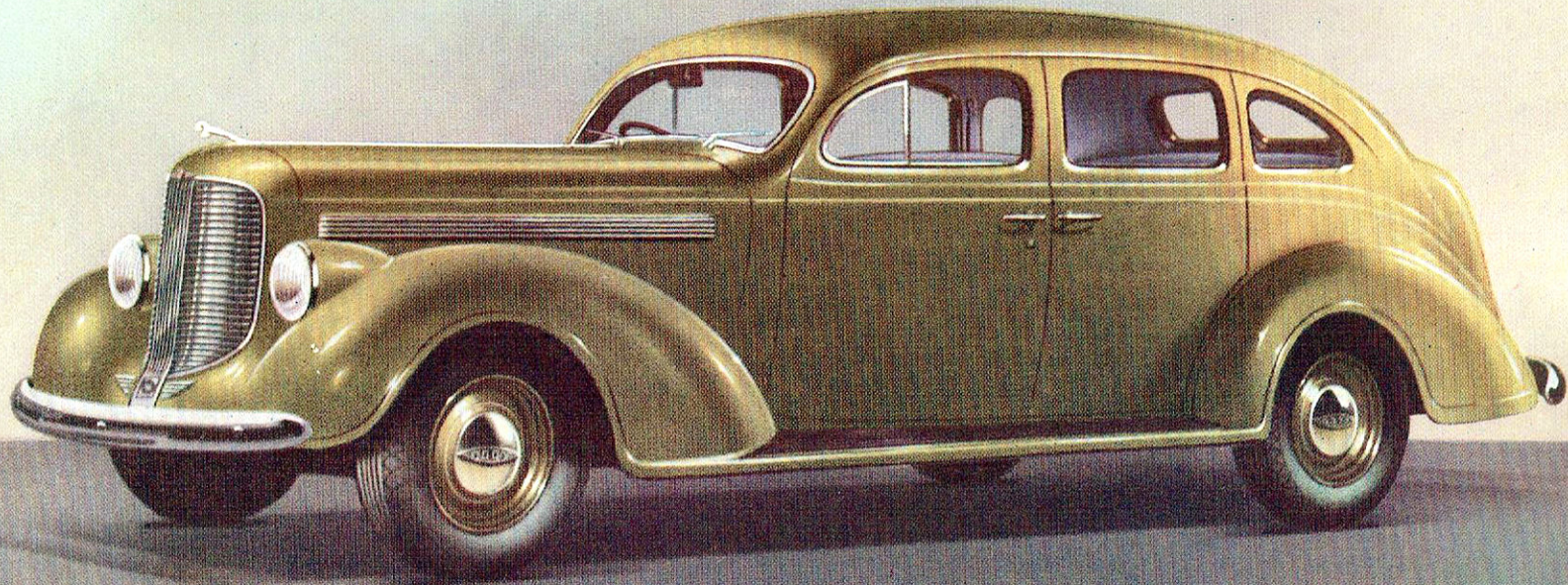
• • **D8 TOURING SEDAN** • •



• • **D8 UNIVERSAL COUPÉ** • •

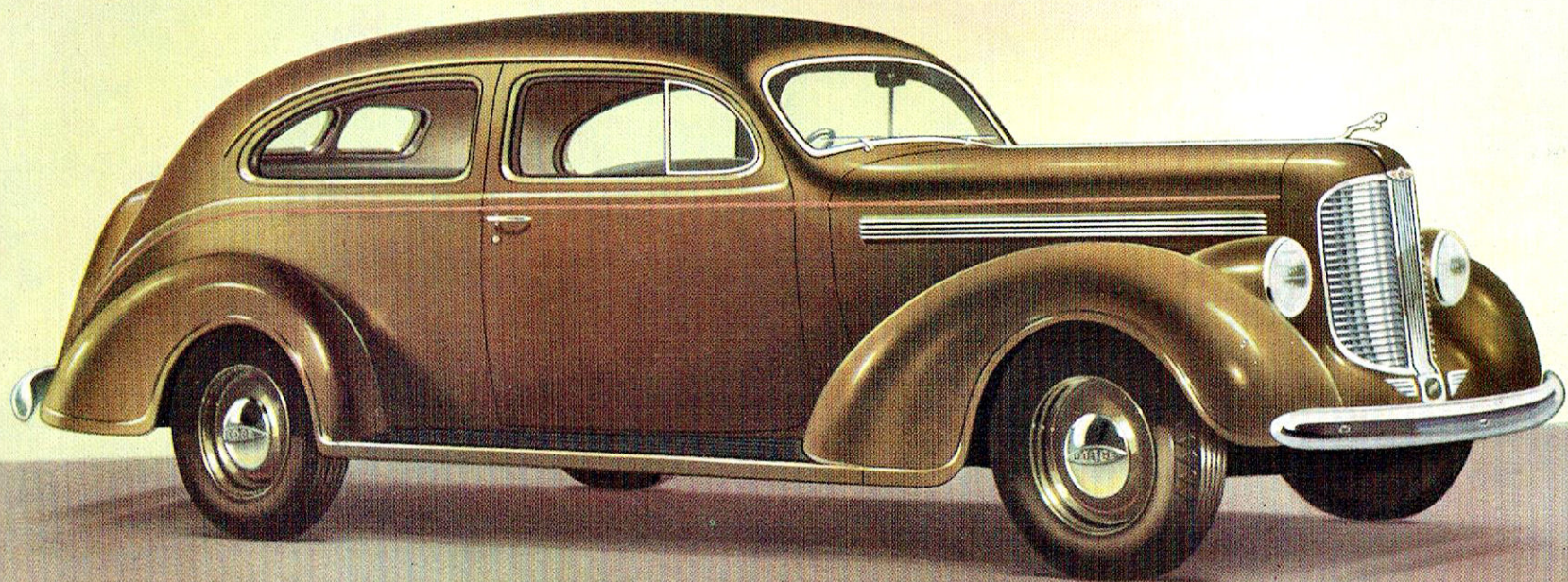


• • **D8-7-PASSENGER TOURING SEDAN** • •

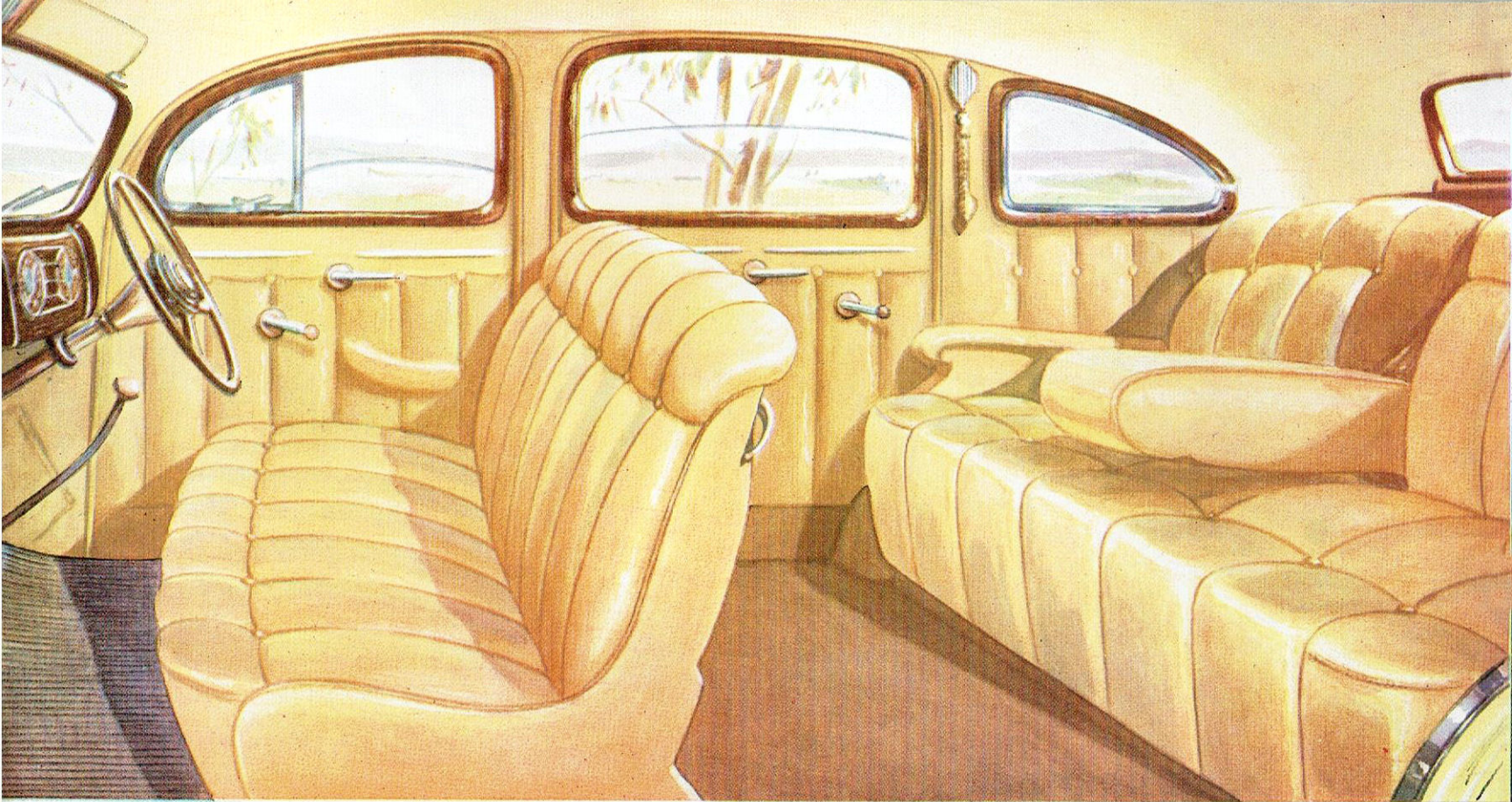


• • D9 - TOURING SEDAN • •





• • D9 UNIVERSAL COUPÉ • •



• • INTERIOR D8 TOURING SEDAN • •

# GENERAL FEATURES

**“The safest car on the road,” say the engineers who designed this New Dodge.**

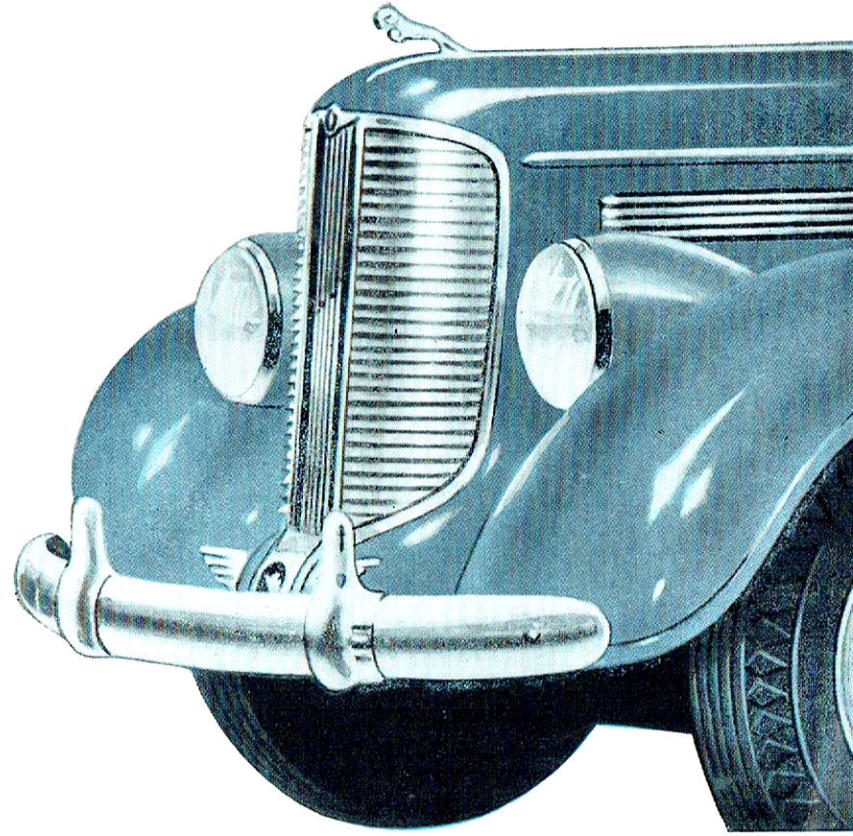
Dodge cars have long been known the world over for their safety. Dodge was the first car to adopt a safety steel body. Dodge was among the very first to adopt Hydraulic Brakes. Yet Dodge engineers have made this new Dodge the safest Dodge of them all !

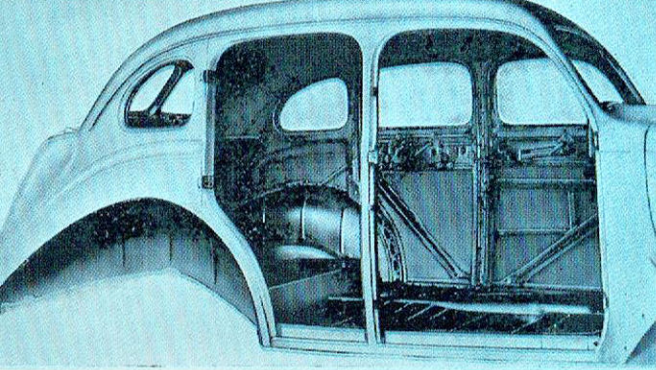
Every one of us driving a car shares a big responsibility. The safety of pedestrians, the safety of other drivers, and of those who drive with us, depends on our driving a “safe” car.

Dodge “Safety” features include :— Safety all-steel Unitop Body—Genuine Hydraulic Brakes—Safety Interior—Safety Glass—Safety lighting—Clear-vision windshield and windows—Ease of steering—low centre of gravity—Rigid frame—easy operation of foot pedals—Independent Hand Brake—Steel core steering wheel.

Dodge “safety” features not only enhance the appearance of the car, but are reflected in the almost miraculous riding comfort and relaxation.

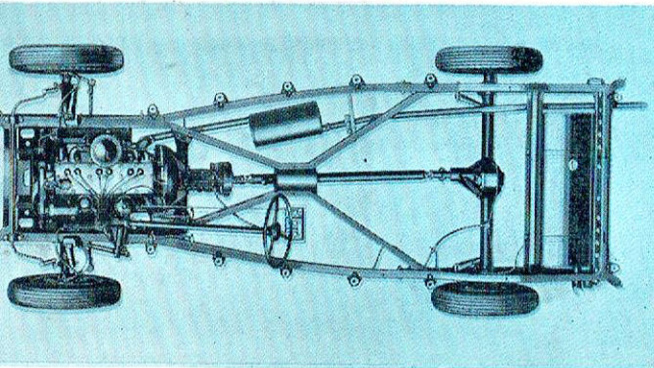
The graceful front of the new Dodge showing the striking radiator grille and ultra-smart motif design at the curved base.





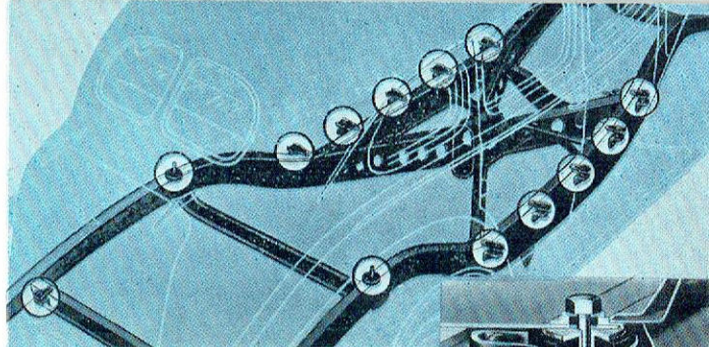
The Dodge "Safe-T-Steel" Body — a unit extremely strong and rigid—when combined with the all-steel welded Unitop, represents a margin of safety far in advance of normal requirements. It is insulated and tested throughout against heat, cold and noise.

Improvements and refinements on the Dodge X type frame make it the strongest and most rigid frame in all Dodge History. Rolled edges stiffen the frame centre section while two added braces hold the X member more solidly.

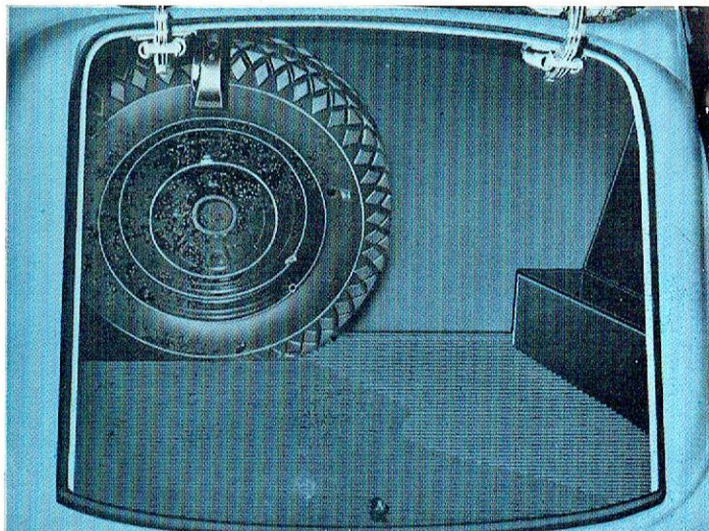
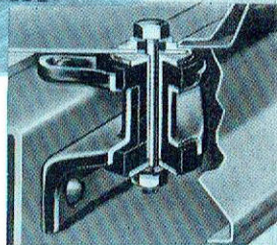


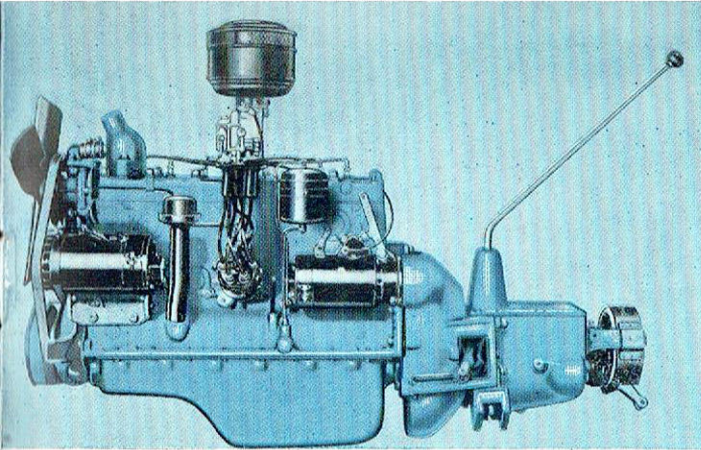
A thing of beauty in its perfect moulding and sweeping design, the Dodge one-piece solid steel "Unitop" provides the utmost in safety. Stamped from a single sheet of steel, it extends from the cowl to the trunk opening. It is welded to the already extra-strong and rigid "Safe-T-Steel" Body.

Contoured to harmonise with the sweeping beauty of the new Dodge — the luggage trunk has extra capacity for all requirements. The spare tyre and wheel are vertically mounted inside the trunk at the back.



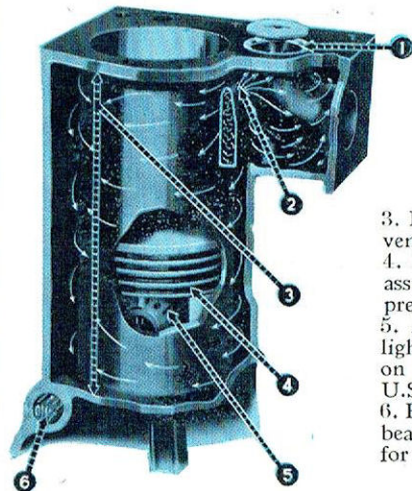
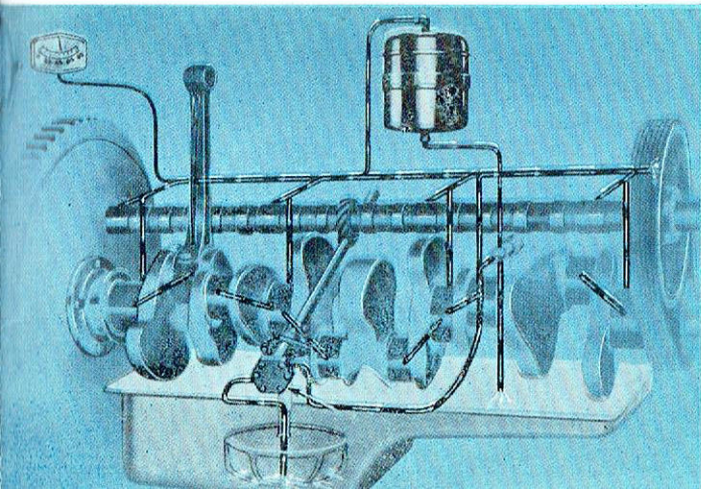
The Dodge "Safe-T-Steel Unitop" Body is also protected from road and tyre noise through the Dodge steel outrigger mountings — rugged steel brackets insulated with cushions of live rubber.



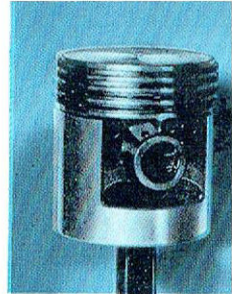


**The Engine.**

**Lubrication.**



1. Hardened exhaust valve seat inserts resist wear, saving fuel and postponing grinding.
2. Directional cooling tube carries cool water direct to all exhaust valve seats.
3. Full-length water jackets prevent cylinder wall distortion.
4. Four piston rings per piston assure full compression and prevent waste of oil and fuel.
5. Aluminium alloy pistons are light in weight, lessening strain on rods and bearings. They are U-slotted for expansion control.
6. Full pressure lubrication to all bearings through drilled holes for positive circulation.



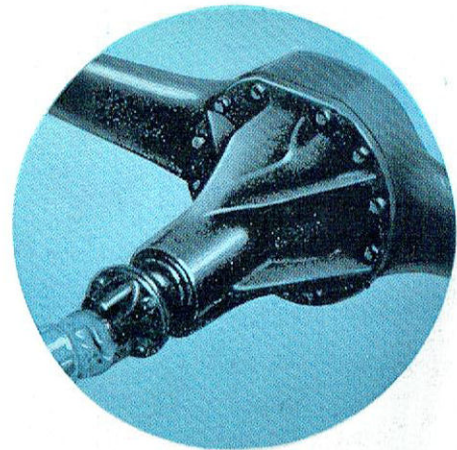
Dodge Aluminium Alloy Pistons are lighter in weight, permitting quicker pick-up and require less fuel to drive them.

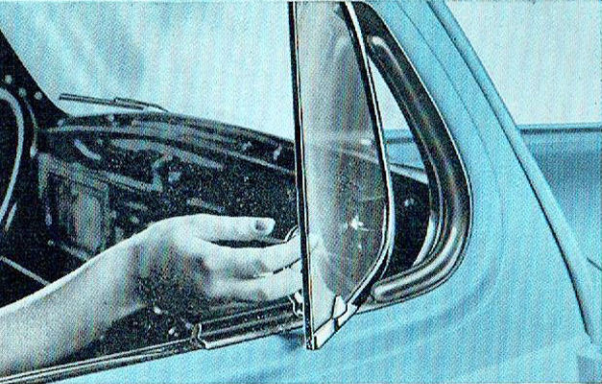
The world-famous L-type Dodge Engine has been refined for even greater economy performance and long life. Engineered into this famous power plant is a combination of outstanding and basic money-saving features that make possible the low cost of operation which satisfied Dodge owners all over the world are experiencing.

Full pressure lubrication assures the circulation of oil to all the vital internal working parts of the engine.

**Dodge Hypoid Rear Axle.**

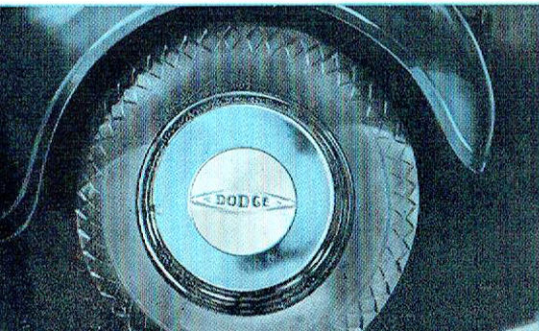
This type of axle is sturdier and quieter with larger bearings and longer gear teeth. The Pinion is located below centre.



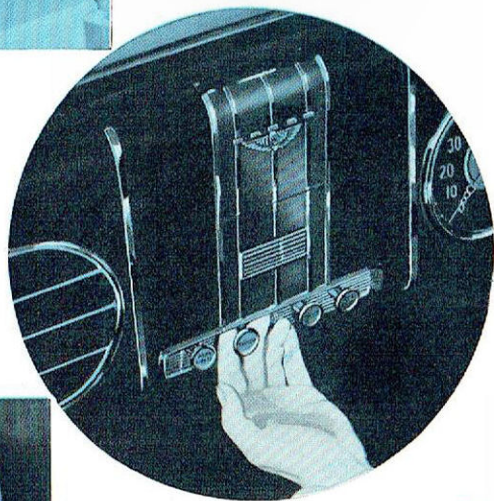
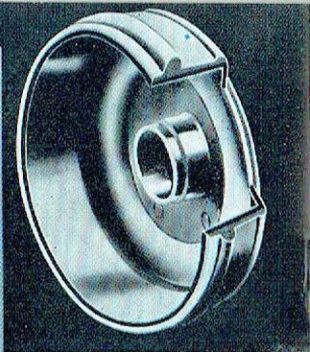
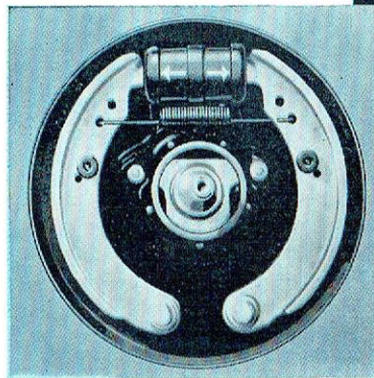


Front door ventilating wings mounted on friction pivots, swing outward in a wide arc, scooping air into the front compartment when needed.

Aero-disc steel wheels that cannot transmit rumbling noises to the body, considerably enhance the beautiful appearance of the car.



Genuine Dodge equal pressure 4-wheel Hydraulic Brakes assure positive, even braking over the entire braking surface. The cast iron braking surfaces of the steel drums dissipate heat and reduce wear.

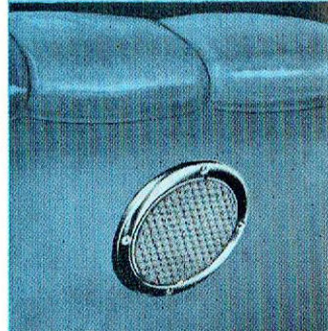
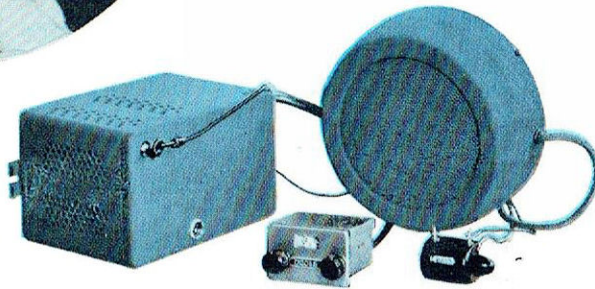


The striking new instrument panel has large dials and recessed controls. The controls are centrally located within easy reach of the driver.

**DODGE CAR RADIO (Available at extra cost)**

For satisfactory performance a radio must be designed for the car in which it is to be installed. Dodge Engineers dictated the specifications of this set. The Unit fits compactly under the Instrument Panel with which the controls harmonise perfectly. A custom feature set giving trouble-free service.

Bottom right, the Comfortone Courtesy Speaker installed in the back of the front seat. Perfect reception for rear seat passengers — eliminates undue volume. Car Bodies are specially prepared for this installation. Sold as an accessory to the radio, at extra cost.



# SPECIFICATIONS

## D 8 and D 9 MODELS

<b>Bodies :</b>	Dodge "Unitop" Safe-T-Steel. Fully insulated against sound, heat and dust. Safety Glass in Windscreen and Side Windows. Leather Upholstery Standard. Cloth upholstery available. Spacious Built-in Trunk.	<b>Crank-shaft :</b>	Drop-forged from special high carbon steel. Counter weighted. Four main bearings. Aluminium Alloy Pistons. Four rings per piston.
<b>Overall Length :</b>	D.8, 196 ins. <b>Seven Passenger</b> , 213 ins. D.9, 193 ins.	<b>Engine Cooling and Heat Control :</b>	Quick warm-up period is governed by thermostatic control. Water cooling by centrifugal pump and 17 ins. four-bladed fan. Water circulation full length of cylinder bores. Valve seats cooled by special water header in cylinder block. Cellular radiator.
<b>Chasses :</b>	X type, Double Drop, Bridge construction.	<b>Electrical System :</b>	6-volt system. Fully automatic spark advance with vacuum control. Air-cooled generator with voltage control.
<b>Axles :</b>	<b>Front</b> , Tubular; <b>Rear</b> , Hypoid. Semi-floating. Ratio, 4.1 to 1. <b>7-passenger</b> , 4.3 to 1.	<b>Fuel System :</b>	Positive Pump from 13 Imp. Gallon Tank, with special sump for collection of water or foreign matter. Down draft carburettor.
<b>Brakes :</b>	<b>Service</b> . Dodge equal action hydraulic, cast-iron steel-backed drums. <b>Parking</b> . Fully independent Hand Brake.	<b>Transmission :</b>	3 Forward Speeds. All gears silent. Synchromesh. Roller bearings in reverse idler gear. Dry, single-plate clutch.
<b>Wheels and Tyres :</b>	Five Steel Aero Disc Wheels. Dodge D 8 five 16 x 6.25 Air Wheel Tyres. <b>Seven-Passenger</b> , five 16 x 6.50 Air Wheel Tyres. Dodge D.9 five 16 x 6.00 Air Wheel Tyres. Spare Tyre housed within trunk.	<b>Springs :</b>	Semi-elliptical. Front have double main leaves (D.8 has metal spring gaiters).
<b>Steering :</b>	Worm and Roller.	<b>Equipment :</b>	Bumper Bars, Four hydraulic direct action shock absorbers, Radiator Mascot, Licence Brackets, Automatic Stop Light, Complete kit of tools. D.8 has Dual Air-note horns and Electric Cigar Lighter.
<b>Engine D.8 :</b>	6-cylinder L-head. Compression ratio, 6.5 to 1. Developed H.P., 87. Bore and Stroke, 82.55 mm. x 111.1 mm. Piston Displacement, 3.57 litres. Inserted vanadium alloy exhaust valve seats. Force Feed Lubrication. Oil Purifier.	<b>Ventilation :</b>	Clear vision system. Large forward opening cowl ventilator. D.8 hinged front and rear ventilating windows. D.9 Sedan hinged front ventilating windows.
<b>Engine D.9 :</b>	6-cylinder L-head. Compression ratio, 6.7 to 1. Developed H.P., 82. Bore and Stroke, 79.4 mm. x 111.1 mm. Displacement, 3.3 litres. Inserted vanadium alloy exhaust valve seats. Force Feed Lubrication.		

*Prices are subject to alteration without notice and orders are booked subject to revision if any alteration should be made in the Customs Tariff. We reserve the right to alter the specifications without notice.*

**CO-OPERATIVE MOTORS LIMITED**

**131 COLLINS STREET, HOBART**

**3061 (2 lines)**