



**WILLYS**

*Utility Vehicles*

# CONDENSED SPECIFICATIONS

- BRAKES**—Four-wheel, Bendix duo-servo, internal-expanding, two shoe type, self energizing. Total braking area 134 sq. inches.
- CHASSIS**—Frame, double-drop X-member type. Silent "U" spring shackles.
- CLUTCH and TRANSMISSION**—Single-plate dry-disc clutch. Silent synchro-mesh transmission.
- CONTROLS**—Horn control at centre of steering wheel. Starter button, throttle and choke controls together with ignition lock in instrument panel.
- ELECTRICAL**—Battery, 13-plate. Starting motor, Auto-Lite. Generator, Auto-Lite. Coil, Auto-Lite and Distributor, Vacuum-type Auto-Lite.
- COOLING SYSTEM**—Cellular-type radiator—11-quart capacity. Concealed filler pipe. Pump circulation, centrifugal type.
- ENGINE**—Four-cylinder, L-head type. Cylinder bore 3½ inches—Stroke 4½ inches. Piston displacement 134.2 cubic inches. R.A.C. horsepower rating 15.63; actual horsepower 48 at 3200 r.p.m. Compression ratio 5.7 to 1. Engine bolts through rubber with rubber mountings at both front and rear.
- ENGINE LUBRICATION**—Full pressure to crankshaft bearings, connecting rod and camshaft bearings, and timing chain. Oil reservoir capacity, 3.30 Imp. quarts. Float-O floating-type oil intake.
- EQUIPMENT**—Non-glare windshield. Remote door controls. Safety-type steering wheel. All-steel body with solid steel top—sound and heat insulated. Oversize, double-action hydraulic shock absorbers. Dash-control emergency brakes. Starter button on instrument panel. Large glove compartments on right and left side of instrument panel. Large tyres—size 16 x 5.50.
- FRONT AXLE**—Reverse Elliott type, heat-treated I-beam section. Timken roller thrust bearings and bronze bushings on steering knuckles.
- FUEL SYSTEM**—Petrol tank at rear—capacity 6.60 Imperial Gallons. Mechanical fuel pump and filter. Electric fuel gauge in instrument panel.
- REAR AXLE**—Semi-floating, unit-centre type. Differential and pinion shaft on Timken taper roller bearings. Spiral bevel ring gear and pinion, nickel alloy steel.
- STEERING GEAR**—Worm and sector gear type—17-foot turning radius.
- WHEELS**—Disc-type wheels. Spare wheel carried in rear luggage compartment. Tyre size 16 x 5.50.

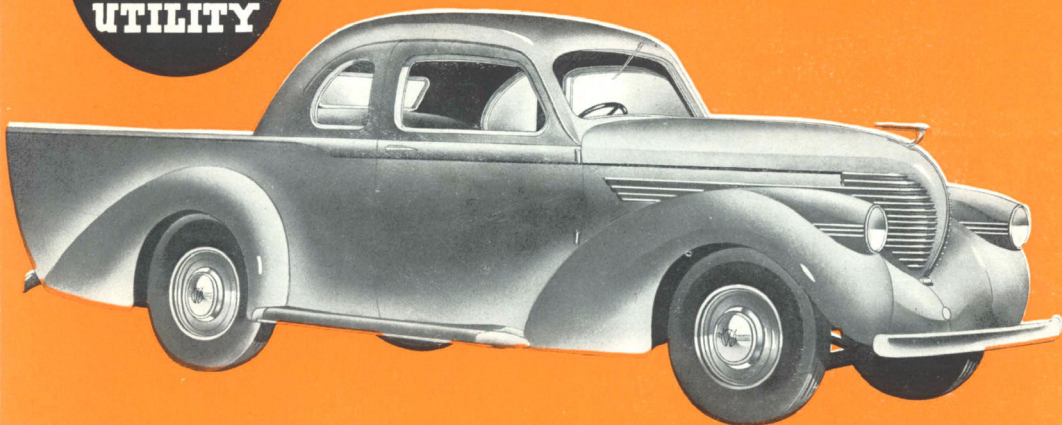
NOTE: We reserve the right to change prices, colors, and other specifications without notice.

## OVERLAND LIMITED

358-386 Wickham Street, Valley,  
BRISBANE

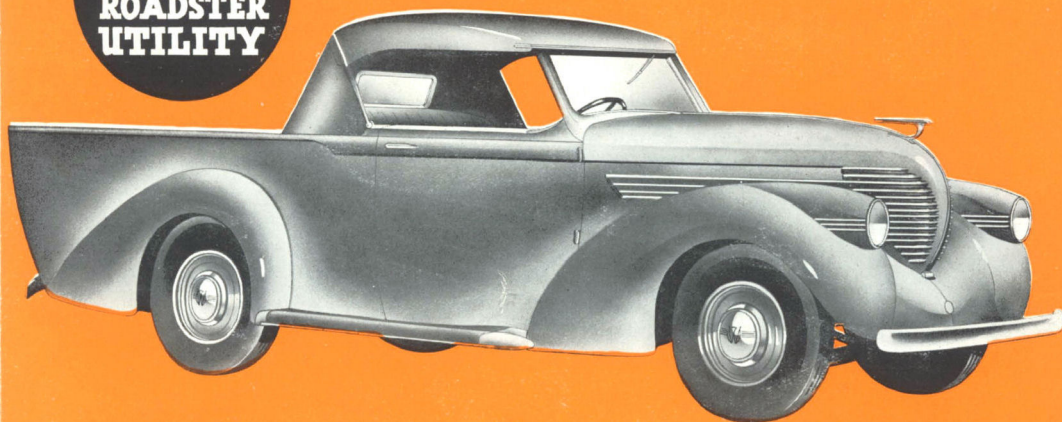
Phones: B2201, B2202, B2203, B7665 (4 lines)

**WILLYS  
COUPE  
UTILITY**



*A roomy all-steel coupe utility with the comfort, flowing lines and streamlined beauty of a passenger car — yet providing fast, economical and dependable transportation. Inside Dimensions: 68 ins. long; 57 ins. wide; 18 in. sides.*

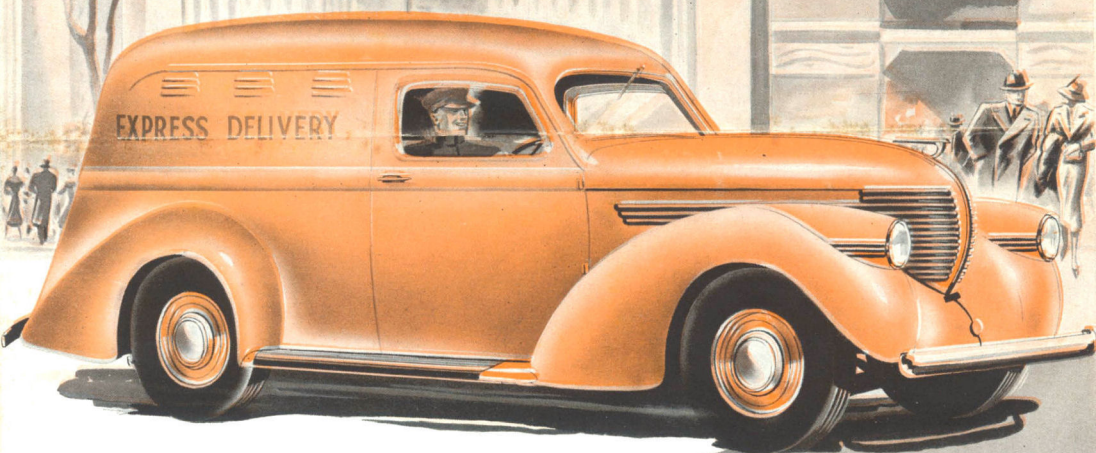
**WILLYS  
ROADSTER  
UTILITY**



*Particularly recommended for Butchers, Fruiters, Builders, Plumbers, etc. All-steel construction; upholstered in genuine leather. Inside body dimensions: 68 ins. long; 57 ins. wide; 18 in. sides. A smart and dependable Utility for the modern trader.*



*Announcing*  
**GREATER ECONOMY  
FASTER DELIVERIES**



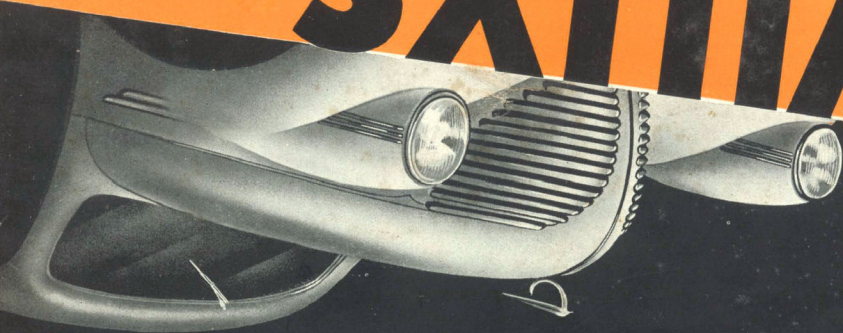
*with the NEW*

**WILLYS**

**UTILITY VEHICLES**

Utility Vehicles

WATSON



## CONDENSED SPECIFICATIONS

- BRAKES**—Four-wheel, Bendix duo-servo, internal-expanding, two shoe type, self energizing. Total braking area 134 sq. inches.
- CHASSIS**—Frame, double-drop X-member type. Silent "U" spring shackles.
- CLUTCH and TRANSMISSION**—Single-plate dry-disc clutch. Silent synchro-mesh transmission.
- CONTROLS**—Horn control at centre of steering wheel. Starter button, throttle and choke controls together with ignition lock in instrument panel.
- ELECTRICAL**—Battery, 13-plate. Starting motor, Auto-Lite. Generator, Auto-Lite. Coil, Auto-Lite and Distributor, Vacuum-type Auto-Lite.
- COOLING SYSTEM**—Cellular-type radiator—11-quart capacity. Concealed filler pipe. Pump circulation, centrifugal type.
- ENGINE**—Four-cylinder, L-head type. Cylinder bore  $3\frac{1}{4}$  inches—Stroke  $4\frac{1}{2}$  inches. Piston displacement 134.2 cubic inches. R.A.C. horsepower rating 15.63; actual horsepower 48 at 3200 r.p.m. Compression ratio 5.7 to 1. Engine bolts through rubber with rubber mountings at both front and rear.
- ENGINE LUBRICATION**—Full pressure to crankshaft bearings, connecting rod and camshaft bearings, and timing chain. Oil reservoir capacity, 3.30 Imp. quarts. Float-O floating-type oil intake.
- EQUIPMENT**—Non-glare windshield. Remote door controls. Safety-type steering wheel. All-steel body with solid steel top—sound and heat insulated. Oversize, double-action hydraulic shock absorbers. Dash-control emergency brakes. Starter button on instrument panel. Large glove compartments on right and left side of instrument panel. Large tyres—size 16 x 5.50.
- FRONT AXLE**—Reverse Elliott type, heat-treated I-beam section. Timken roller thrust bearings and bronze bushings on steering knuckles.
- FUEL SYSTEM**—Petrol tank at rear—capacity 6.60 Imperial Gallons. Mechanical fuel pump and filter. Electric fuel gauge in instrument panel.
- REAR AXLE**—Semi-floating, unit-centre type. Differential and pinion shaft on Timken taper roller bearings. Spiral bevel ring gear and pinion, nickel alloy steel.
- STEERING GEAR**—Worm and sector gear type—17-foot turning radius.
- WHEELS**—Disc-type wheels. Spare wheel carried in rear luggage compartment. Tyre size 16 x 5.50.

NOTE: We reserve the right to change prices, colors, and other specifications without notice.

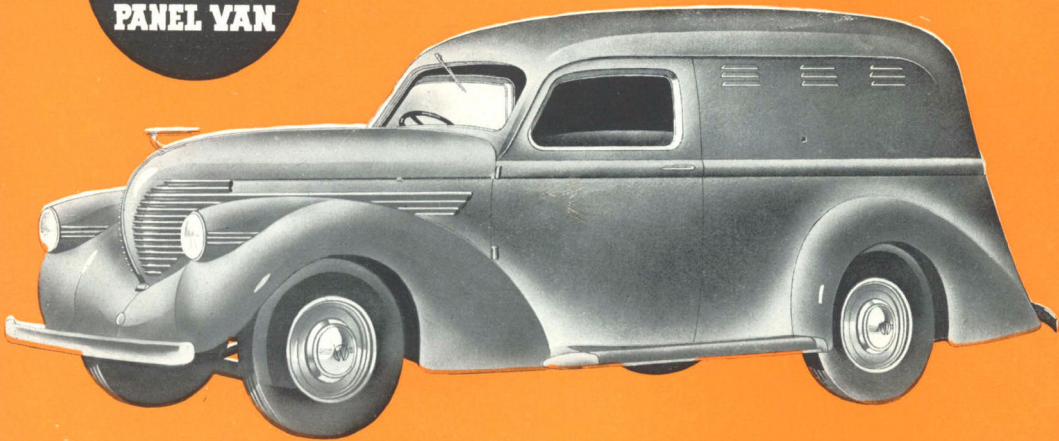
### OVERLAND LIMITED

358-386 Wickham Street, Valley,  
BRISBANE

Phones: B2201, B2202, B2203, B7665 (4 lines)



# WILLYS FULL DOOR PANEL VAN



*This Willys Van has the same streamlined construction as the New Willys Car. Recommended for the fast, dependable and economical transport of Drapery, Hardware, Confectionery, Bread, etc. All-steel construction. Inside body dimensions: 68 ins. long; 57 ins. wide; and 41 ins. high.*

## THE SURPRISE CARS OF THE YEAR!

★ *Authorities claim that the Willys is the smartest and most practically designed car which has ever appeared on the highways of Australia.*

### THE NEW FULL SIZE WILLYS SEDAN

The beautiful smooth lines of each model arouse the admiration of all who are in time with modern times. The powerful running of the new Full Size Willys, its dignity and comfort and faultless finish . . . all these are tokens that an ideal has been achieved . . . a car which, though low in price and cost of running, can hold pride of place amongst the autocrats of the road.

### THE NEW FULL SIZE WILLYS TOURER

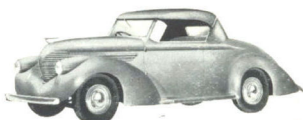
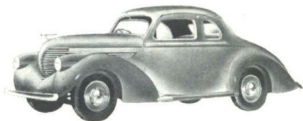
Each new Willys model is certified to do 10 to 15 more miles per gallon than any other current American car. Under 4 quarts of oil to buy when you change . . . thousands of miles more on a set of tyres . . . less depreciation . . . low registration cost and insurance . . . low deposit . . . and generous terms.

### THE NEW FULL SIZE WILLYS COUPE

Leather upholstery — adjustable seat — two glove boxes in dash — large parcel compartment behind seat — lockup luggage compartment. Safety steel body with all-steel top — locks on both doors — cowl ventilation — dome light — sun visor — "four windows", body with wide rear window gives unusual vision. The smart "personal" car for the commercial traveller or business man.

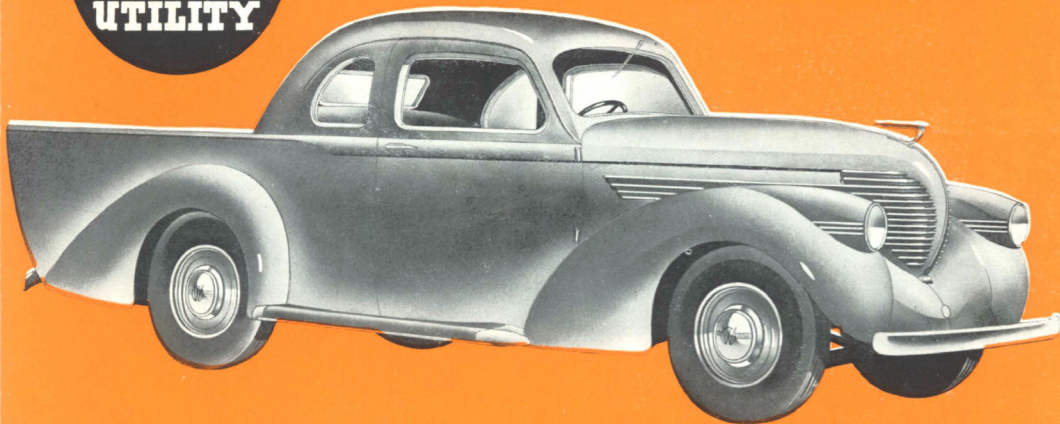
### THE NEW FULL SIZE WILLYS ROADSTER

This model possesses the same modernity, the same distinction and economy of operation as the new Willys Sedan. It is comfortable, fast, powerful and — above all — THRIFTY! Ease of control, strength and reliability, harmonise with attractive lines and exceptional comfort.



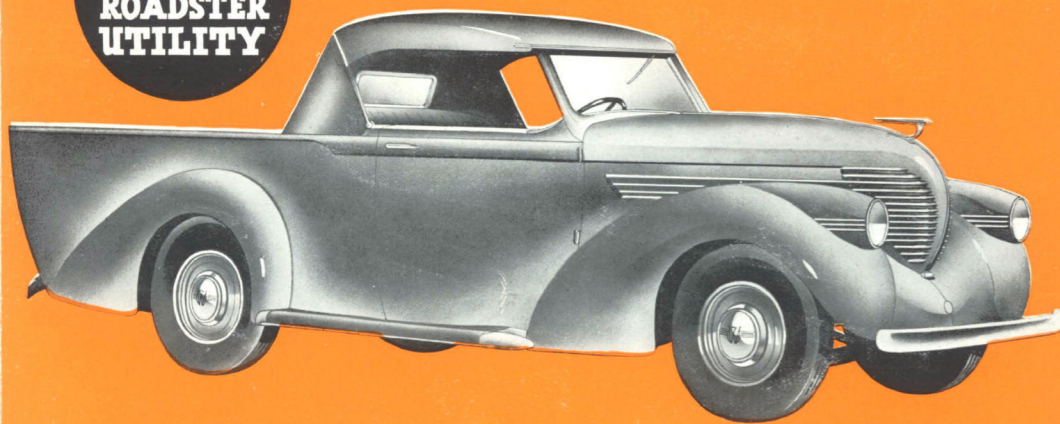


**WILLYS  
COUPE  
UTILITY**



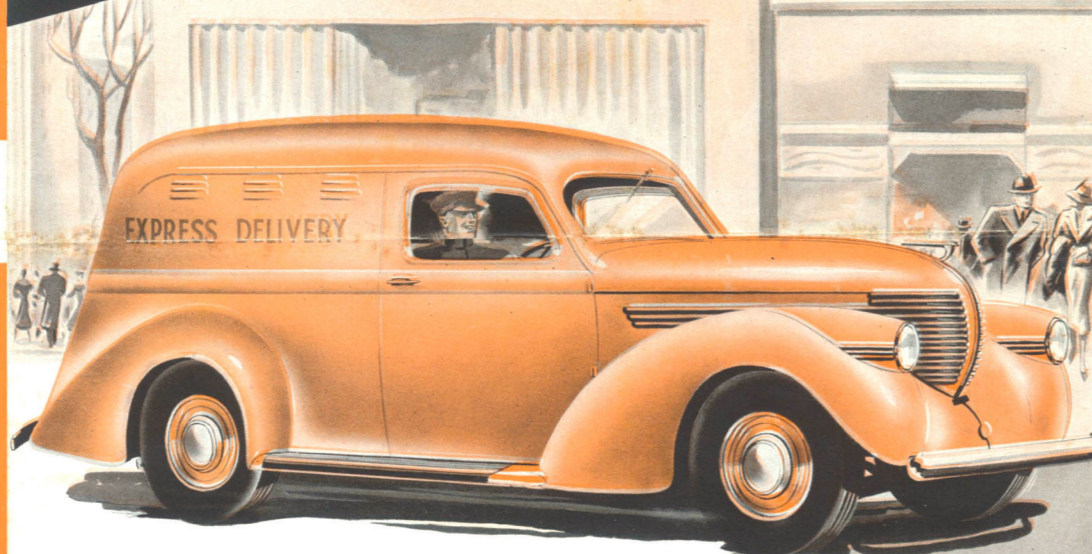
A roomy all-steel coupe utility with the comfort, flowing lines and streamlined beauty of a passenger car — yet providing fast, economical and dependable transportation. Inside Dimensions: 68 ins. long; 57 ins. wide; 18 in. sides.

**WILLYS  
ROADSTER  
UTILITY**



Particularly recommended for Butchers, Fruiters, Builders, Plumbers, etc. All-steel construction; upholstered in genuine leather. Inside body dimensions: 68 ins. long; 57 ins. wide; 18 in. sides. A smart and dependable Utility for the modern trader.

*Announcing*  
**GREATER ECONOMY  
FASTER DELIVERIES**



with the **NEW WILLYS**  
**UTILITY VEHICLES**

*Willys Vehicles*  
**SATURN**



**CONDENSED SPECIFICATIONS**

**BRAKES**—Four-wheel, Bendix duo-servo, internal-expanding, two shoe type, self energizing. Total braking area 134 sq. inches.

**CHASSIS**—Frame, double-drop X-member type. Silent "U" spring shackles.

**CLUTCH and TRANSMISSION**—Single-plate dry-disc clutch. Silent synchro-mesh transmission.

**CONTROLS**—Horn control at centre of steering wheel. Starter button, throttle and choke controls together with ignition lock in instrument panel.

**ELECTRICAL**—Battery, 13-plate. Starting motor, Auto-Lite. Generator, Auto-Lite. Coil, Auto-Lite and Distributor. Vacuum-type Auto-Lite.

**COOLING SYSTEM**—Cellular-type radiator — 11-quart capacity. Concealed filler pipe. Pump circulation, centrifugal type.

**ENGINE**—Four-cylinder, L-head type. Cylinder bore 3 1/2 inches—Stroke 4 1/2 inches. Piston displacement 134.2 cubic inches. R.A.C. horsepower rating 15.63; actual horsepower 48 at 3200 r.p.m. Compression ratio 5.7 to 1. Engine bolts through rubber with rubber mountings at both front and rear.

**ENGINE LUBRICATION**—Full pressure to crankshaft bearings, connecting rod and camshaft bearings, and timing chain. Oil reservoir capacity, 3.30 Imp. quarts. Float-O floating-type oil intake.

**EQUIPMENT**—Non-glare windshield. Remote door controls. Safety-type steering wheel. All-steel body with solid steel top—sound and heat insulated. Oversize, double-action hydraulic shock absorbers. Dash-control emergency brakes. Starter button on instrument panel. Large glove compartments on right and left side of instrument panel. Large tyres—size 16 x 5.50.

**FRONT AXLE**—Reverse Elliott type, heat-treated I-beam section. Timken roller thrust bearings and bronze bushings on steering knuckles.

**FUEL SYSTEM**—Petrol tank at rear—capacity 6.60 Imperial Gallons. Mechanical fuel pump and filter. Electric fuel gauge in instrument panel.

**REAR AXLE**—Semi-floating, unit-centre type. Differential and pinion shaft on Timken taper roller bearings. Spiral bevel ring gear and pinion, nickel alloy steel.

**STEERING GEAR**—Worm and sector gear type—17-foot turning radius.

**WHEELS**—Disc-type wheels. Spare wheel carried in rear luggage compartment. Tyre size 16 x 5.50.

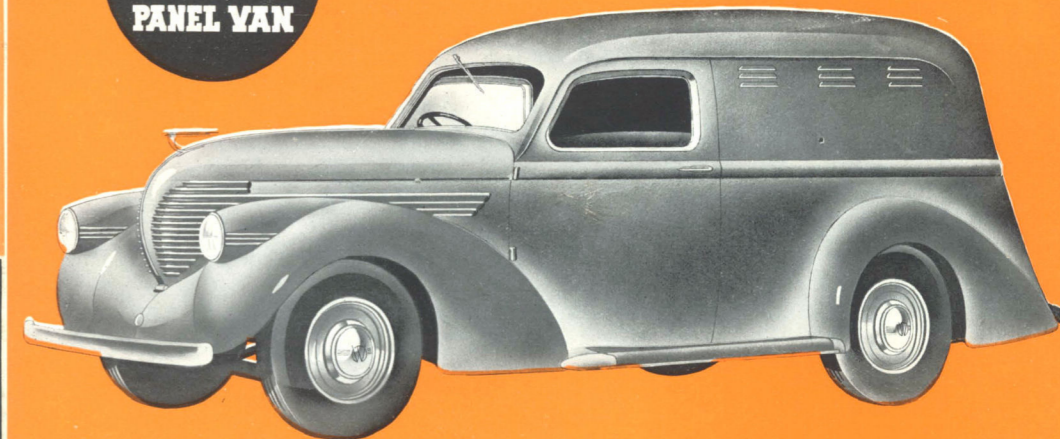
NOTE: We reserve the right to change prices, colors, and other specifications without notice.

**OVERLAND LIMITED**

358-386 Wickham Street, Valley,  
BRISBANE

Phones: B2201, B2202, B2203, B7665 (4 lines)

**WILLYS  
FULL DOOR  
PANEL VAN**



This Willys Van has the same streamlined construction as the New Willys Car. Recommended for the fast, dependable and economical transport of Drapers, Hardware, Confectionery, Bread, etc. All-steel construction. Inside body dimensions: 68 ins. long; 57 ins. wide; and 41 ins. high.

**THE SURPRISE CARS  
OF THE YEAR!**

★ Authorities claim that the Willys is the smartest and most practically designed car which has ever appeared on the highways of Australia.

**THE NEW FULL SIZE WILLYS SEDAN**

The beautiful smooth lines of each model arouse the admiration of all who are in time with modern times. The powerful running of the new Full Size Willys, its dignity and comfort and faultless finish . . . all these are tokens that an ideal has been achieved . . . a car which, though low in price and cost of running, can hold pride of place amongst the autocrats of the road.

**THE NEW FULL SIZE WILLYS TOURER**

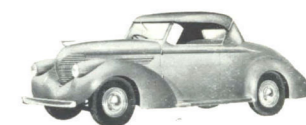
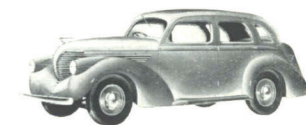
Each new Willys model is certified to do 10 to 15 more miles per gallon than any other current American car. Under 4 quarts of oil to buy when you change . . . thousands of miles more on a set of tyres . . . less depreciation . . . low registration cost and insurance . . . low deposit . . . and generous terms.

**THE NEW FULL SIZE WILLYS COUPE**

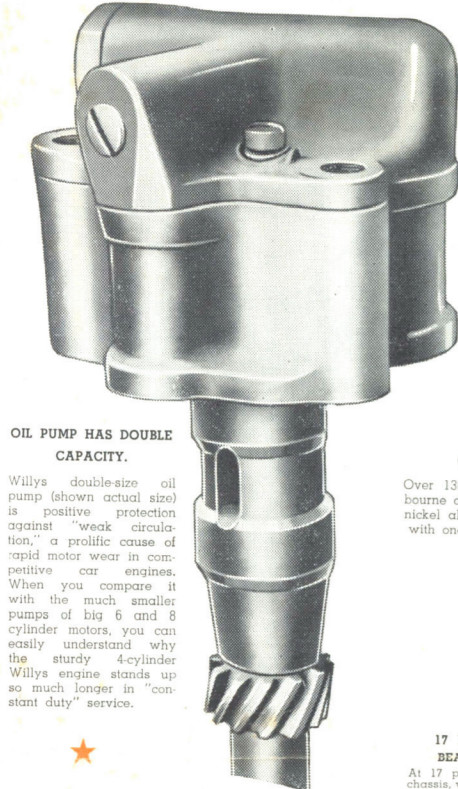
Leather upholstery — adjustable seat — two glove boxes in dash — large parcel compartment behind seat — lockup luggage compartment. Safety steel body with all-steel top — locks on both doors — cowl ventilation — dome light — sun visor — "four windows", body with wide rear window gives unusual vision. The smart "personal" car for the commercial traveller or business man.

**THE NEW FULL SIZE WILLYS ROADSTER**

This model possesses the same modernity, the same distinction and economy of operation as the new Willys Sedan. It is comfortable, fast, powerful and — above all — THRIFTY! Ease of control, strength and reliability, harmonise with attractive lines and exceptional comfort.

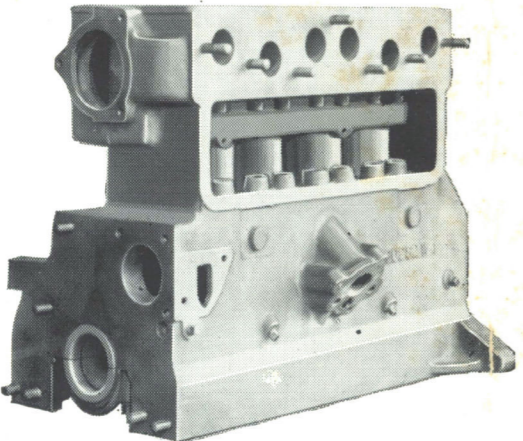






**OIL PUMP HAS DOUBLE CAPACITY.**

Willys double-size oil pump (shown actual size) is positive protection against "weak circulation," a prolific cause of rapid motor wear in competitive car engines. When you compare it with the much smaller pumps of big 6 and 8 cylinder motors, you can easily understand why the sturdy 4-cylinder Willys engine stands up so much longer in "constant duty" service.



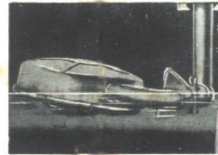
**CHROME NICKEL IRON BLOCK GIVES EXTRA LONG LIFE**

Over 130,000 miles without an engine overhaul was reported by a Melbourne driver of a Willys delivery. One of the main reasons is this chrome nickel alloy iron cylinder block with 4-ring hard grey iron pistons combined with one of the most efficient full force feed lubrication systems on any car.



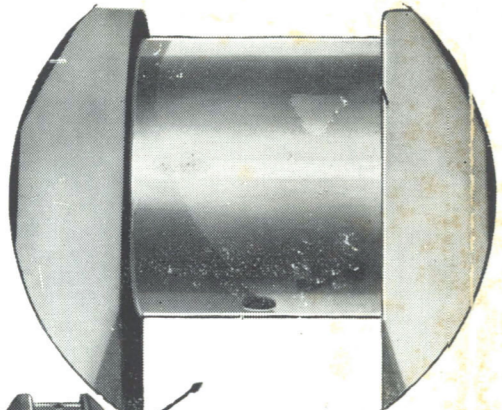
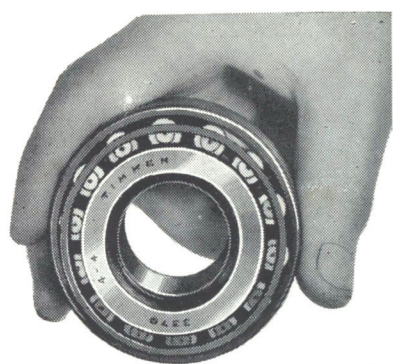
**FEEDS THE CLEANEST OIL.**

Willys exclusive Float-Oil oil intake adds many thousands of miles of life to its engine by delivering only the cleanest part of the oil supply to the pump. Note how it floats below the surface, and above the lower portion of the reservoir where water, sludge, and road matter collect.

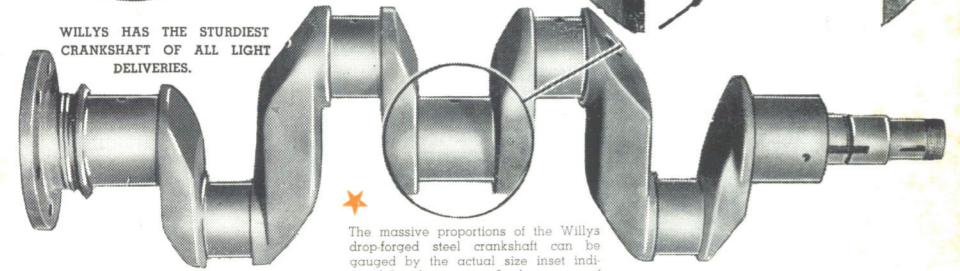


**17 ROLLER BEARINGS**

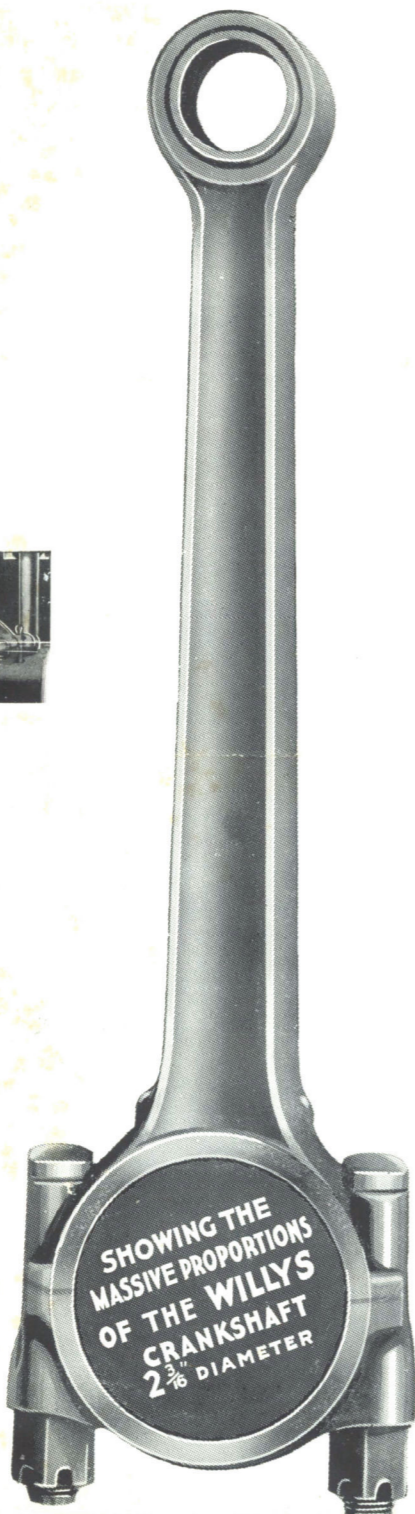
At 17 points in the chassis, where friction would absorb power and increase running costs, Willys fits heavy duty adjustable roller bearings. This total of roller bearings contributes largely to the long life of Willys. Roller bearings cost considerably more than plain bearings, but they last out the life of the chassis, and Willys fits them because the designers build for service and not price. This money spent at the factory saves the owner expense in service and maintenance, and is one of the reasons for the long life and low operation costs reported by Willys owners all over the world.



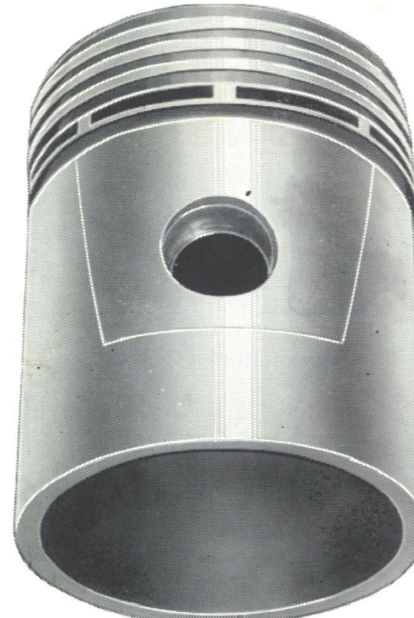
**WILLYS HAS THE STURDIEST CRANKSHAFT OF ALL LIGHT DELIVERIES.**



The massive proportions of the Willys drop-forged steel crankshaft can be gauged by the actual size inset indicated by the arrow. It shows one of the 3 main bearings 2 and 3/16 in. diameter.

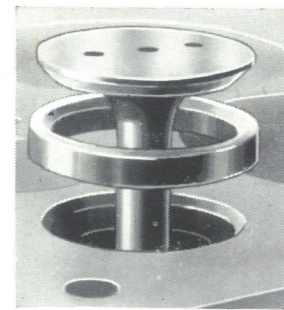


**SHOWING THE MASSIVE PROPORTIONS OF THE WILLYS CRANKSHAFT 2 3/16" DIAMETER**



**4 TIMES LONGER LIFE WITH LIGHT IRON PISTONS.**

Willys 4-ring close grained hard grey iron pistons have almost unlimited life. The costly rebore of small alloy pistons in multi-cylinder engines are avoided. Willys owners report up to 130,000 miles without an engine overhaul. The illustration shows the actual size of the Willys piston. The hardened steel piston pins are the full floating type giving maximum bearing surface.



**PRACTICALLY ENDS VALVE GRINDING.**

Silchrome steel exhaust valves seating on tungsten tool steel seat inserts practically eliminate valve grinding in the Willys. The valve is shown in its actual size.

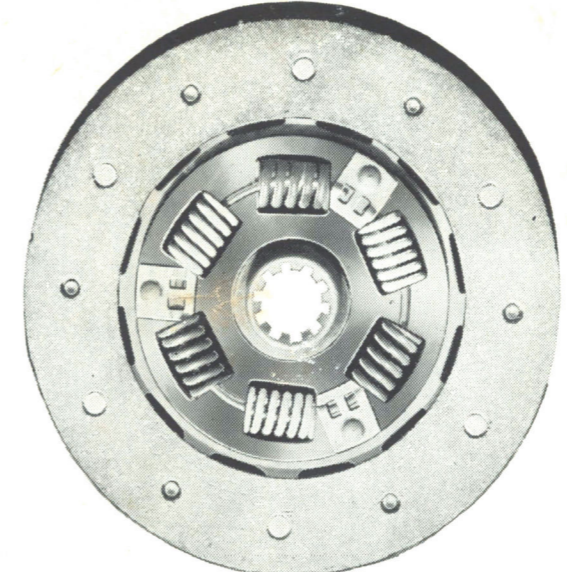


**FULLY AUTOMATIC SPARK CONTROL.**

Extra mileage from petrol is gained by equipping Willys vehicles with this vacuum controlled igniter. Its vacuum diaphragm scientifically times the spark at low speeds, while a synchronised centrifugal governor gives the correct adjustment in the medium and peak revs.

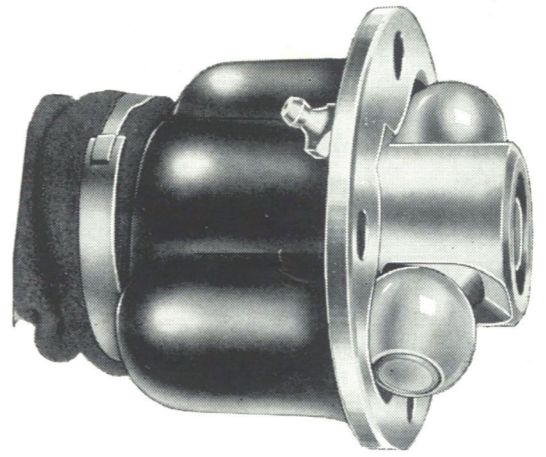


Timkin Roller Bearings throughout . . . with TWO of generous size on the pinion shaft . . . assures long life of all working parts.



**STURDY TRUCK CLUTCH.**

Willys 8-inch Borg and Beck heavy duty spring cushion clutch is the same size as used on some cars rated at double Willys power, and is a further concrete proof of Willys long-life design.

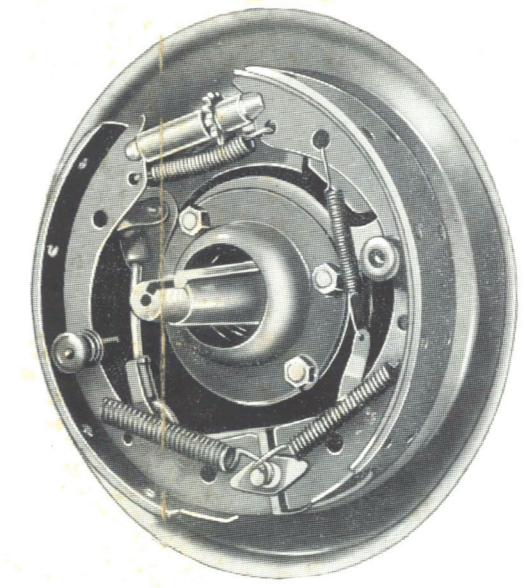


**UNIVERSAL JOINTS NEVER WEAR OUT.**

Willys universal joints (shown actual size) are engineered to last the life of the vehicle. Each is virtually one big ball and roller bearing equipped with a high pressure oil connection and grease-proof reservoir, needing oil once a year or at each 10,000 miles.



Oversize Air Cleaner and Silencer obviates induction noises and at the same time prevents dust and other abrasions being drawn into the engine.



Willys has fully enclosed 4-wheel Bendix Duo-Servo moulded lining brakes with a total area of 134 sq. in. Over 40,000 miles without a reline is common. Their servo action is self-contained, automatic, and does not require the use of auxiliary devices or any attention on the part of the driver.



**Identically the same engineering features illustrated ensure long life—low repair bills—and dependability in Willys Passenger Cars and Commercial Utilities alike.**

**SAVE Money Every Mile! MAKE Money Every Mile!**

**WITH THE NEW WILLYS UTILITY VEHICLES**

No trucks on the Australian market have ever won such high praise for their design and appearance as the new Willys Utilities. Everyone conceded that their cleverly designed lines and exclusive "atmosphere" make them a worthy advertisement for their owners wherever they appear.

**Lower Delivery Costs—Higher Profits**

Every alert business man will recognise that, with their low cost and subsequent low maintenance, he can now go further afield for new business—and that on the existing trade he can cut his delivery costs AND THEREBY MAKE MORE PROFIT.

**Twice the Delivery Range—with Speed and Economy**

The new Willys can economically replace heavier vehicles used in light delivery service; in fact two Willys (costing approximately the same as one heavier unit) offer greater loading space—twice the delivery range and 100 per cent. in increased delivery speed—at no greater cost than the wages of the second driver.

These cleverly designed and sturdily built trucks will cost you less to buy, and less for maintenance. When they are delivered you will have that satisfaction which comes from making a shrewd purchase and afterwards, throughout their long life, their low operating cost will enable you to SAVE money on every mile and thus make more profit from every delivery.

*If your business requires a truck for light deliveries, the new Willys will not only meet this requirement exactly, but, compared with heavier trucks in similar service, its savings can, over a period, actually return to you its purchase price.*

