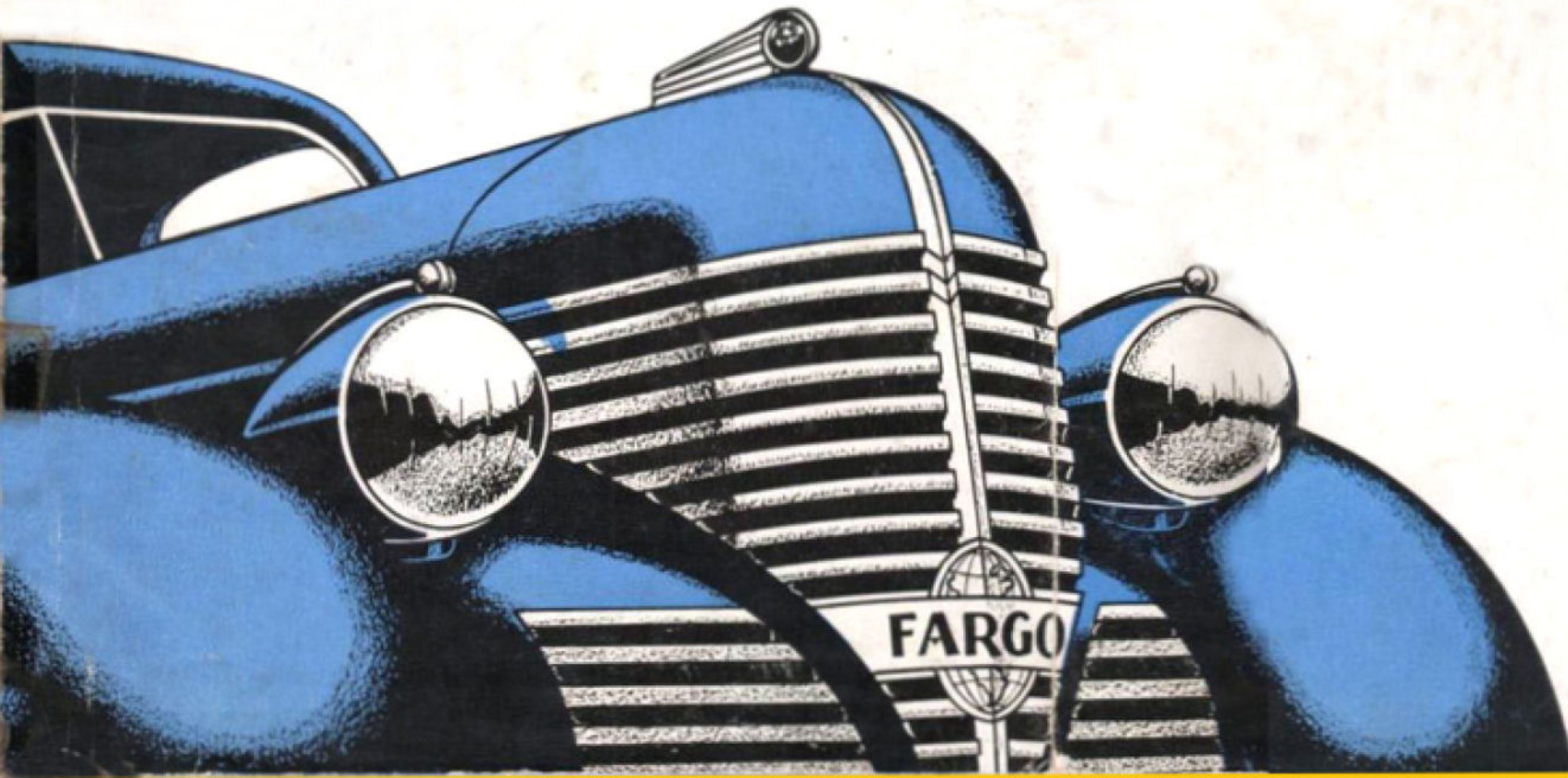


FARGO

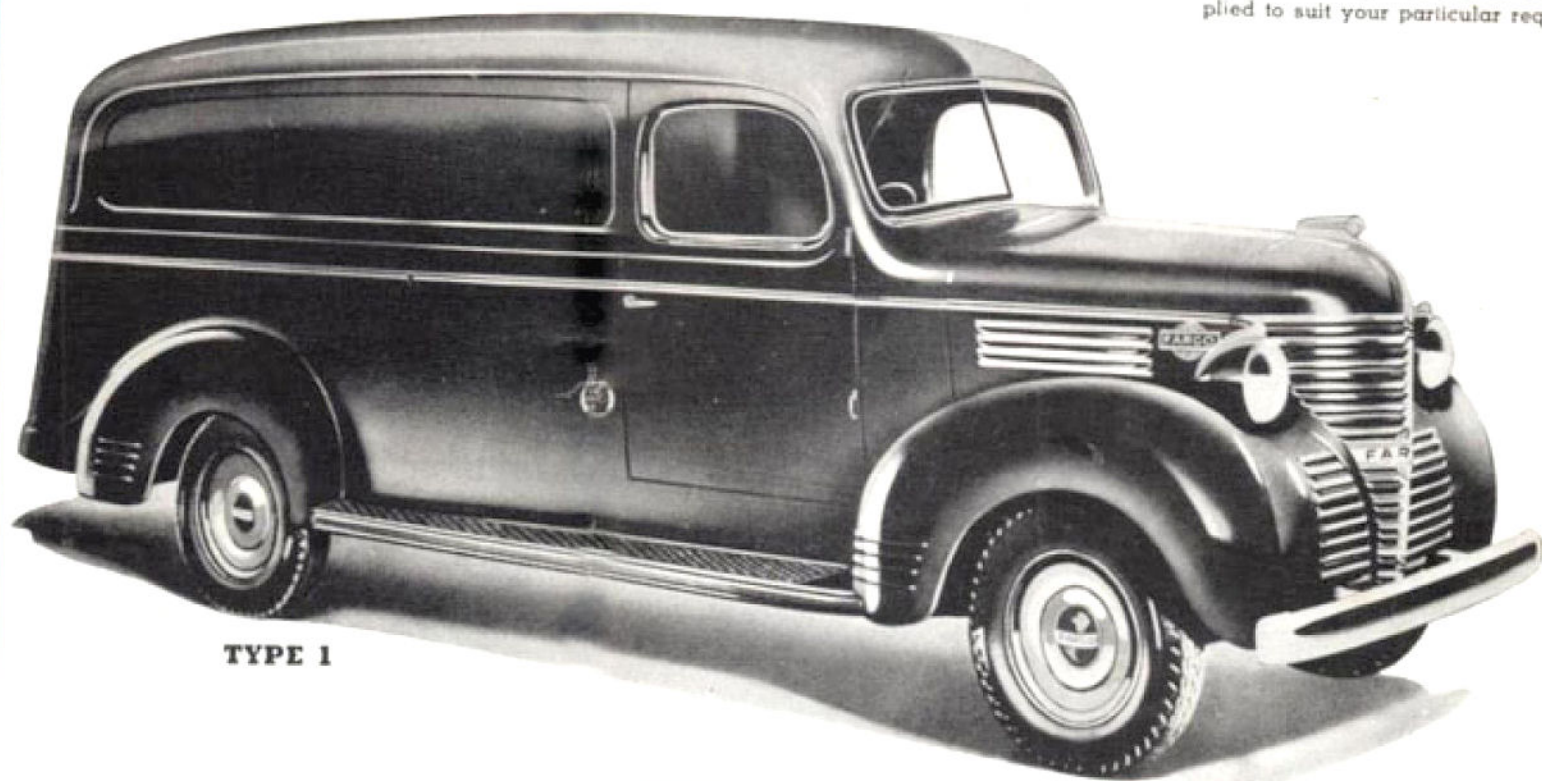
COMMERCIALS

WITH THE ECONOMY 'BLUE STREAK' ENGINE



FARGO

The New Fargo offers a range of Commercial Vehicles each with new economy, reliability, and performance; developed through chassis improvements and with an appearance so impressive and attractive as to instantly identify one of the world's best looking motor vehicles—New "Blue Streak" 23 H.P. engine on FH 1 series and 25 H.P. on FH 2 models for greater power and smoother performance. Improved driving vision, greater seating capacity, and more accessible controls are but some of the brilliant Fargo features. Among the chassis improvements are included new rear spring mountings which will be above the axle for durability and greater clearance on deeply rutted roads.

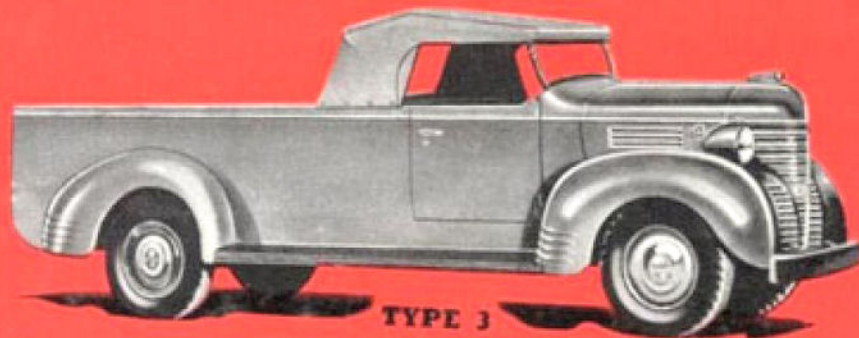


TYPE 1

Illustrated on this page are the FH 1 series type 1, the Panel Van; and the FH 1 series type 3, the Roadster Front Utility.

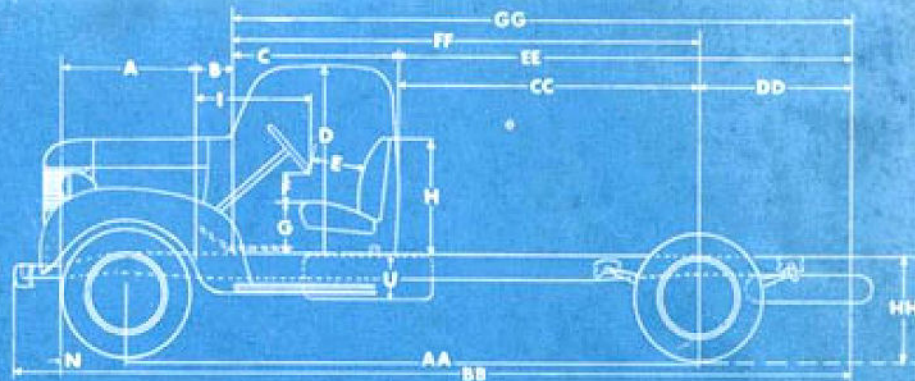
FH1 SERIES

Wheelbase 116". Standard body styles include: Chassis with flat faced cowl; Economy, all-purpose, Roadster front and Coupe Utilities; Panel Vans; Cab and Tray (or Table Top) with drop sides; Cab-Well sides. Special bodies can be supplied to suit your particular requirements.



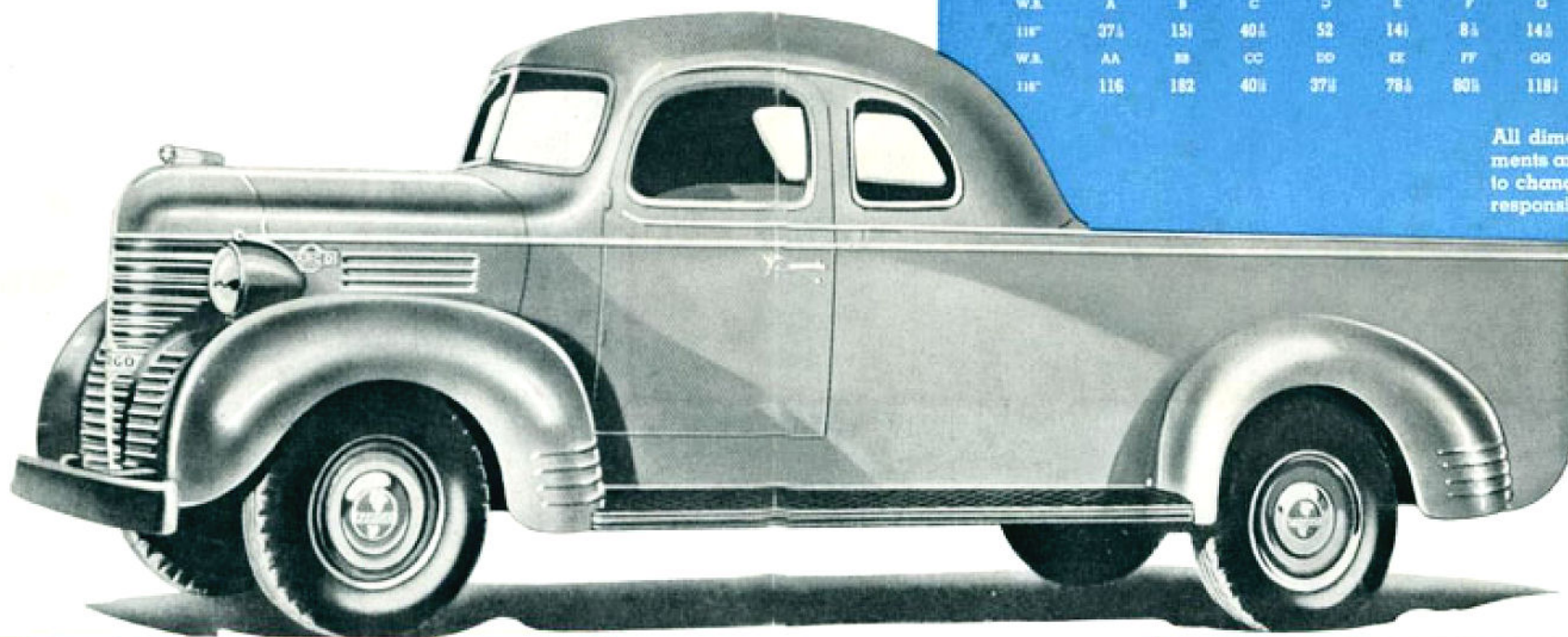
TYPE 3

The FH 1 series of Commercials are built with a host of new engineering features that ensure excellent performance, greater dependability, more economy and genuine satisfaction when put to work. They are unusually attractive in appearance, and are amply powered with the new "Blue Streak" engine.



W.B.	A	B	C	D	E	F	G	H	I	N	U
118"	37½	15½	40½	52	14½	8½	14½	31½	31½	11½	11½
W.B.	AA	BB	CC	DD	EE	FF	GG	HH			
118"	116	182	40½	37½	78½	80½	118½	22½			

All dimensions are outside measurements and approximate only. Subject to change without notice and without responsibility.

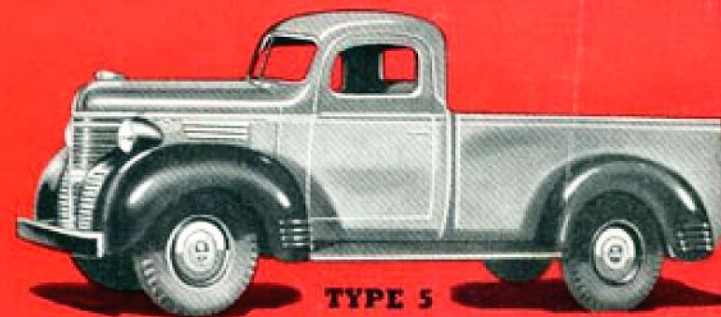


TYPE 2

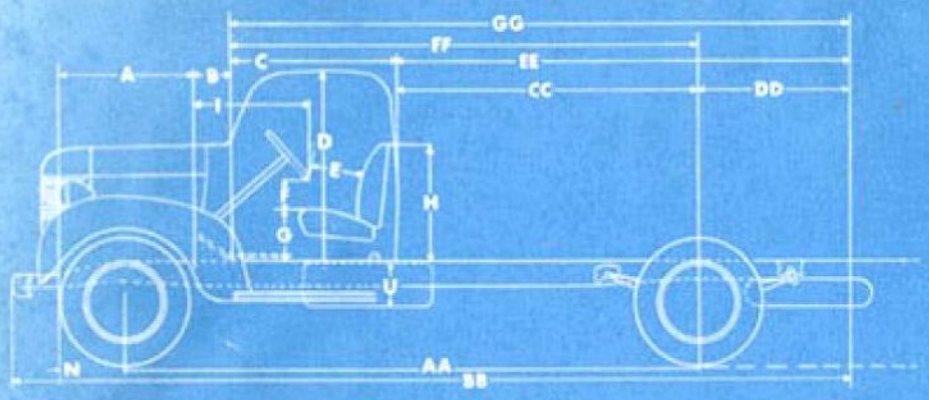
- Type 1. Panel Van.
 - Type 2. Coupe Front Utility.
 - Type 3. Roadster Front Utility.
 - Type 4. Steel Cab with Table Top (or Tray) and drop sides.
 - Type 5. Cab and Utility Back.
- Any type of body can be built to suit special requirements.



TYPE 4



TYPE 5



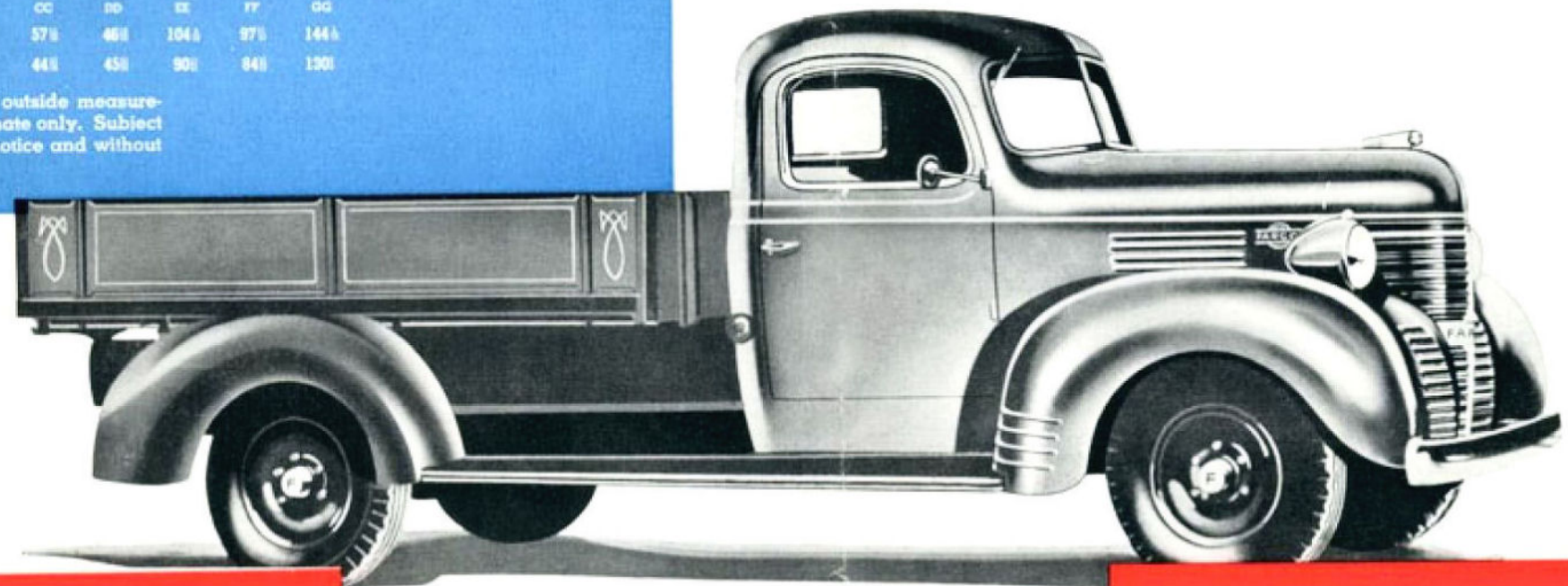
W.B.	A	B	C	D	E	F	G	H	I	N	U
127" & 132"	37 1/2	15 1/2	40 1/2	52	14 1/2	8 1/2	14 1/2	31 1/2	31 1/2	11 1/2	11 1/2
W.B.	AA	BB	CC	DD	EE	FF	GG				
132"	133	208	57 1/2	46 1/2	104 1/2	97 1/2	144 1/2				
128"	120	194	44 1/2	45 1/2	90 1/2	84 1/2	130 1/2				

All dimensions are outside measurements and approximate only. Subject to change without notice and without responsibility.

FH2 SERIES

Wheelbase lengths 120" and 133". Standard body styles include: Chassis and flat faced cowl; Cab and Tray (or Table top) with drop sides; Cab and Stake sides; Panel Van.

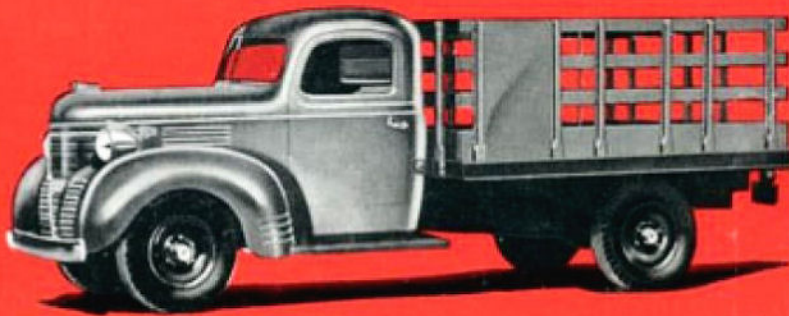
The new powerful "Blue Streak" engine, a sturdy frame and chassis and well designed bodies are features that make FARGO FH 2 series Commercials such a splendid investment. You will find that same economy of operation and trouble-free ownership which distinguishes all the Fargo Commercials.



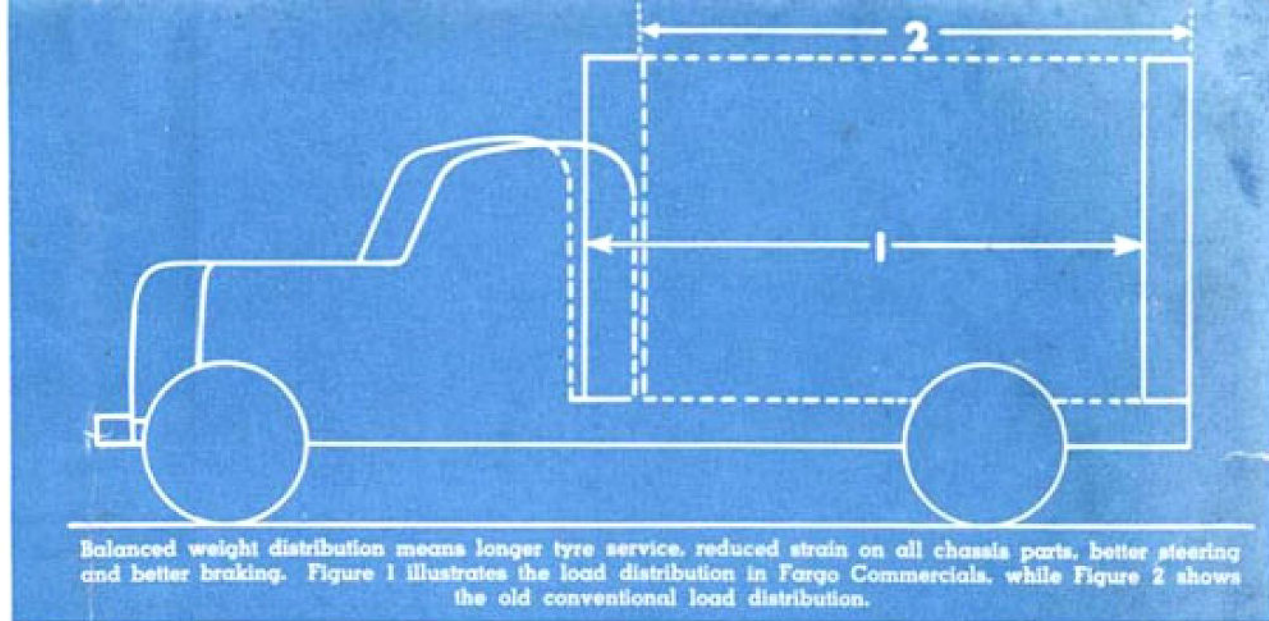
Illustrated above: The FH 2 series with steel cab. Table Top (or tray) body with drop sides.

Illustrated at left: Panel Van on FH2 chassis.

Illustrated at right: Special Stake body fitted on the FH 2 chassis

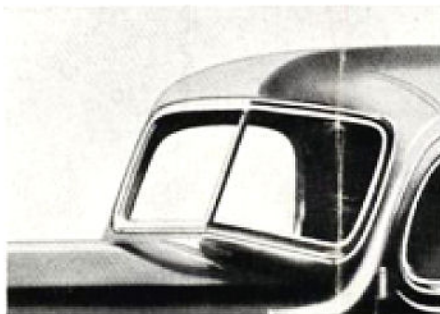


FARGO STEEL CABS AND PANEL BODIES ARE STRONG COMFORTABLE CONVENIENT & SAFE



STEEL CAB

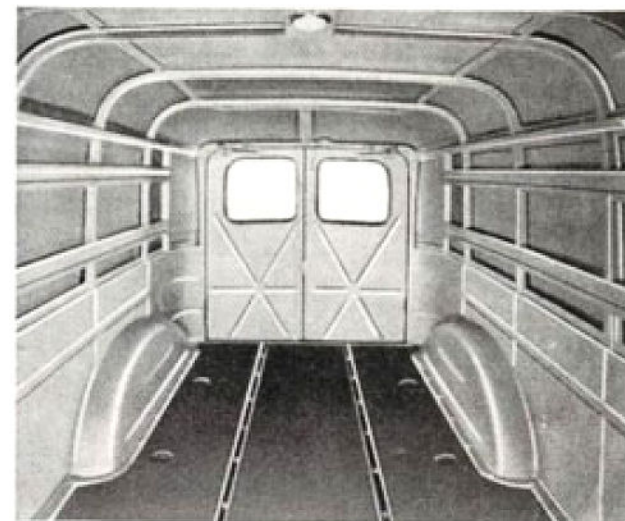
There is ample room in Fargo steel cabs. There is plenty of head room and plenty of leg room. The seat is wide enough for three persons. Comfortably trimmed and upholstered.



THE WINDSHIELD

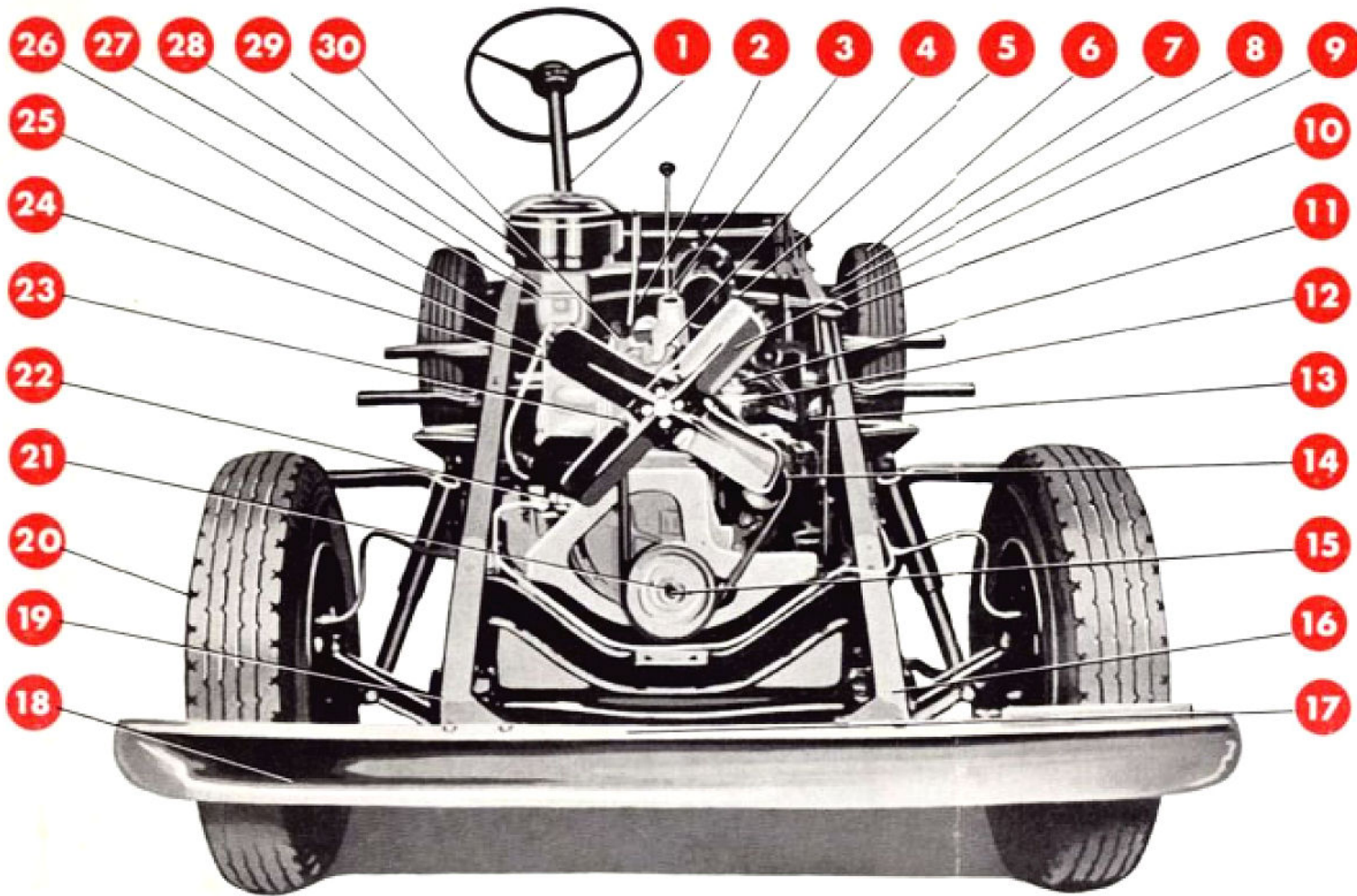
is of safety glass and provides the maximum vision. Air is provided by large ventilator on top of cowl.

RUST PROTECTION — Fargo bodies are protected by rustproofing. Even though the paint (1) may be scratched and open to the elements the metal (3) is protected by the rustproofing (2).



INTERIOR OF THE PANEL VAN. Fargo Panel Vans are braced with sturdy supports to provide strength and rigidity.

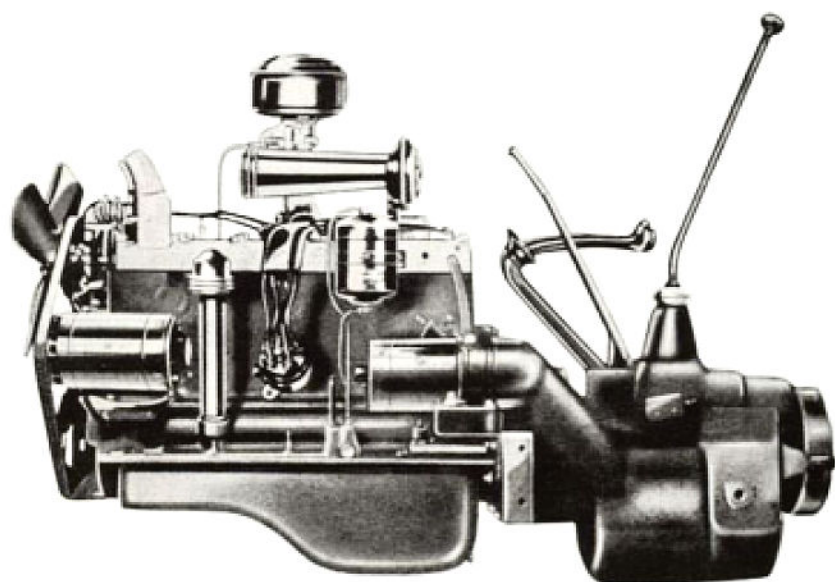
FOR REAL TRUCK VALUE DEMAND THESE FEATURES



- 1 Special Truck Type low geared steering with Oilite Bushings.
- 2 Independent Handbrake.
- 3 Rugged heavy duty Gear Box.
- 4 Special 77 h.p. Truck Engine.
- 5 Roller Bearing Universal Joints.
- 6 7.50 x 16 six-ply Tyres with Spare.
- 7 Cast Iron Brake Drums.
- 8 Heavy Duty Springs and Shackles.
- 9 17" Four Blade Cooling Fan.
- 10 Large Area Four Wheel Hydraulic Brakes.
- 11 10" diameter Single Plate Clutch.
- 12 Crankcase Ventilator and Air Cleaner.
- 13 Sixteen Gallon Petrol Tank.
- 14 Positive Shift Starter.
- 15 Four Bearing superfinished Crankshaft driven by Silent Chain of Large Contact Area.
- 16 Special rugged Truck Type Frame.
- 17 Drop Forged Front Axle.
- 18 Rust proofed Fenders and Panel Work.
- 19 Special Heavy Duty Truck Springs.
- 20 Disc. Wheels 16" x 5.5".
- 21 Heavy four bearing Crankshaft superfinished.
- 22 Large Capacity Water Pump with By Pass Thermostat.
- 23 Exhaust Valve Steel Inserts.
- 24 Full Length Water Jackets on Engine.
- 25 Forced Feed Lubrication to all engine parts.
- 26 One Piece specially heavy Rear Axle Housing.
- 27 Down Draught Carburettor with Acceleration Pump.
- 28 Special Heat Resisting Fuel Pump eliminates fuel vaporization.
- 29 Oil Bath Intake Air Cleaner.
- 30 Foot operated Headlamp Dimmer.

FARGO ENGINES

POWER • PERFORMANCE • DEPENDABILITY • STAMINA • ECONOMY



THE FARGO "BLUE STREAK" ENGINE

The new Fargo "Blue Streak" engine is of the six cylinder high compression L-head type, with exhaust valve seat inserts. Full length water jackets, directional cooling tube, aluminium alloy pistons, 4 rings per piston, and full pressure lubrication to all main lower connecting rods and camshaft bearings.

CYLINDER BLOCK

- 1** Exhaust valve seat inserts resist wear, save fuel, and postpone valve grinding for many thousands of miles.
- 2** Full length water jackets minimize cylinder distortion and save fuel, oil and upkeep expense.
- 3** Directional cooling tube carries cooled water to each of valve ports.
- 4** Four piston rings per piston assure full compression and prevent waste of fuel and oil.
- 5** Aluminium alloy pistons are light in weight and do not impose heavy loads on the engine bearings.
- 6** Full pressure lubrication to all main, lower connecting rods and camshaft bearings provides positive lubrication of oil at all speeds.



CRANKSHAFT

Four main bearings support this rugged Fargo engine crankshaft. With four bearings the crankshaft is supported with a bearing on one side of each connecting rod.

