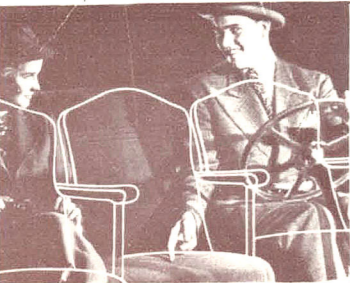




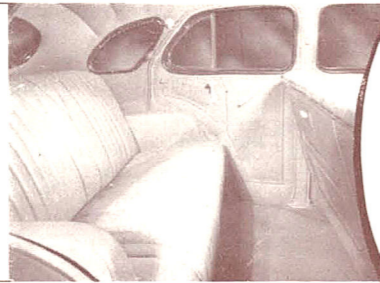
NEW
LUXURY
NEW
THRIFT

The Great New **WILLYS** *Overland*



• Front seat is 50 inches wide—the width of three average theatre seats. Extra comfort for passengers and driver.

A new note in smart design is struck by the simple beauty and exquisite appointments of the roomy interiors. Soft deep cushions, long wearing upholstery, ample head and leg room.



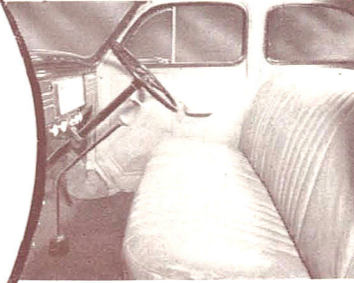
WILLYS-OVERLAND DE LUXE 4 DOOR SEDAN

Larger..Faster..Safer

EVERY INCH A THOROUGH BRED

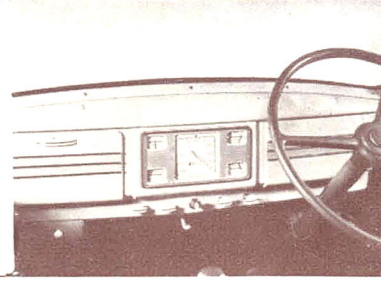
The Great New **WILLYS-OVERLAND**

The new Willys-Overland—the sensation of 1939—is the car which revolutionises motoring. Here's a really grand car, with everything you could wish for in a luxury car . . . at a cost which will amaze you with its extraordinary economy. Crowded with exciting new features, this truly remarkable car gives a road performance which lines up with its striking appearance . . . flashing speed, "glide-ride" comfort, ample elbow room, and every safety factor which can be devised.

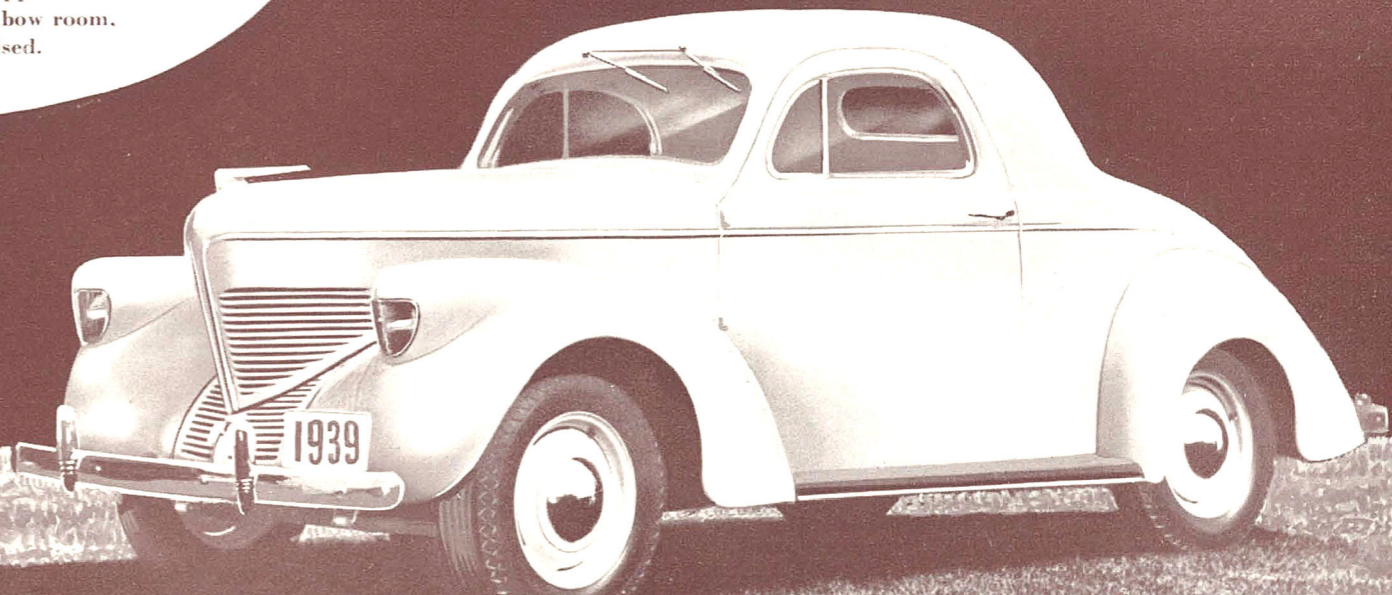
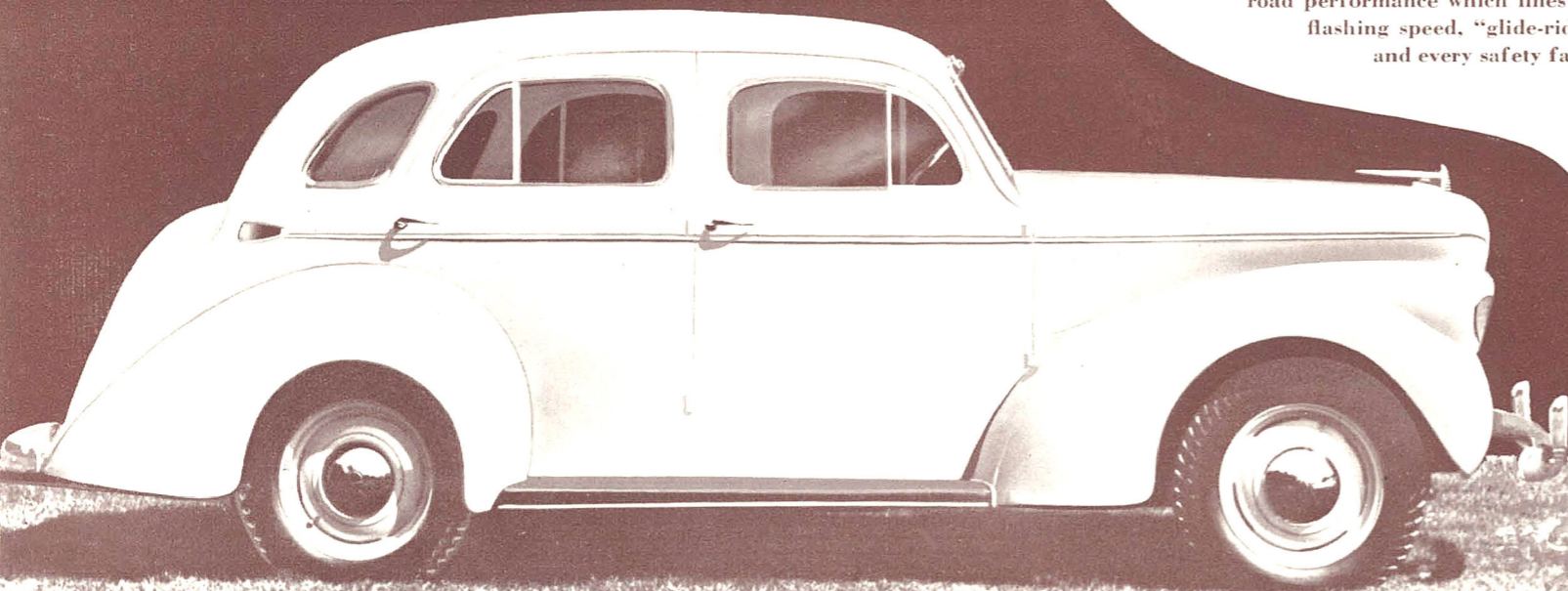


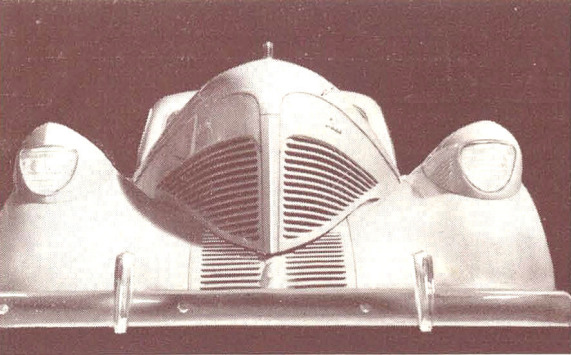
• All controls within easy reach, an unusually wide windshield affords exceptionally broad road vision. Soft cushions, correct angle of both seat and back, and ease of handling, make long driving a pleasure.

Beauty combined with convenience. All instruments within reach and sight without straining. Emergency brake of pistol grip-type under the dash.



WILLYS-OVERLAND DE LUXE COUPE





From any point of view, the slip-stream design of the great new Willys-Overland presents brilliant beauty. You'll fall in love with this amazing new car.

F r e s h N e w S t y l i n g
G r e a t e r R i d i n g C o m f o r t
Q u i c k e r A c c e l e r a t i o n
S u p e r - s a f e H y d r a u l i c B r a k e s
H i g h e r S a f e S p e e d s
L o w F u e l C o n s u m p t i o n
L o n g e r W h e e l b a s e
R o o m i e r B o d i e s
2 7 % M o r e P o w e r

*Quality and Luxury with no
Rival in Economy and Price*

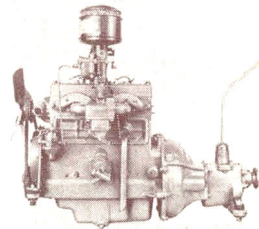
★ For the first time in *any* car, this great new Willys-Overland combines super-power with super-economy. The superb beauty of the modern "slip stream" design — the luxurious comfort of the long, roomy body . . . the flashing speed of its new super-safe engine . . . the safety of its powerful *oversize super-safe Hydraulic Brakes* . . . these things mean luxury in motoring. And with it is an amazing economy which will be a revelation in thrifty motoring.

To fully appreciate its wonderful performance you must ride in the Willys-Overland . . . drive it . . . enjoy the surge of speed from 10 to 50 miles per hour in 15 seconds, to be brought to a swift smooth stop by the super-safe brakes . . . and enjoy the thrill of real luxury motoring at remarkably low cost.

OVERLAND SYDNEY LTD.

254-6 Castlereagh Street, SYDNEY

Telephone MA 6955 (6 lines)



● The greatly improved engine of the Willys-Overland has been stepped up in power more than 25%. Fast acceleration, economy and longevity are outstanding characteristics.



● The spacious luggage compartment affords ample room for luggage on long trips. The interior space measures more than 18 cubic feet.