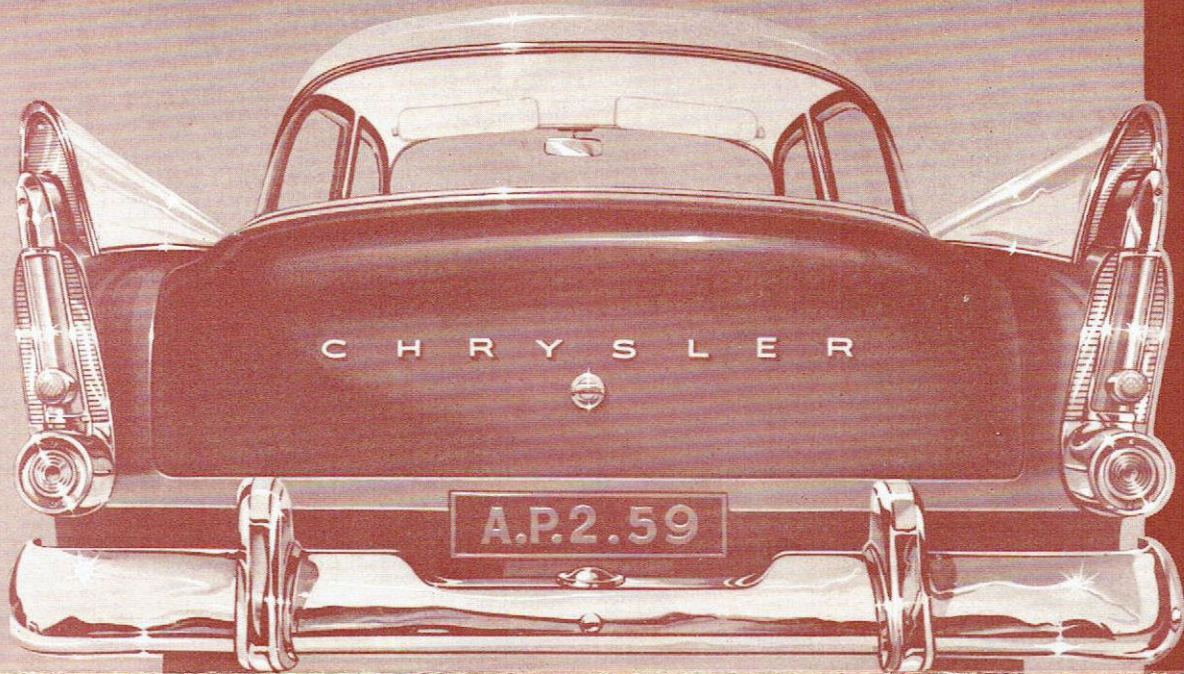
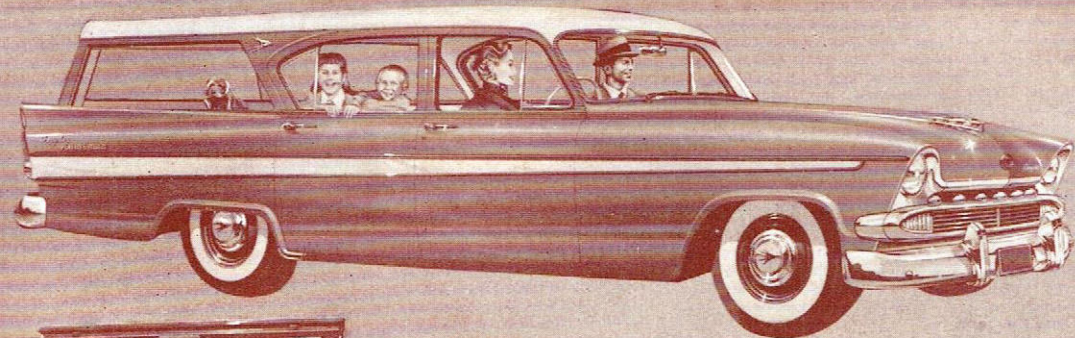


**CHRYSLER  
BREAKS  
THROUGH  
THE POUND  
BARRIER!**





***You could pay  
hundreds more  
for your new car  
and still not get  
the extra safety  
—ease of hand-  
ling—and rugged  
dependability of  
Chrysler Royal***



This handsome, versatile vehicle leads a double life . . . equally at home when there's work to be done, or you're driving for fun! Plainsman brings with it all the owner benefits of completely integrated design, sound construction, and cost-saving factory production methods. It has all the luxury and comfort of the "Royal", plus enough space in back to make a bed for two "six footers".



## CHRYSLER PLAINSMAN

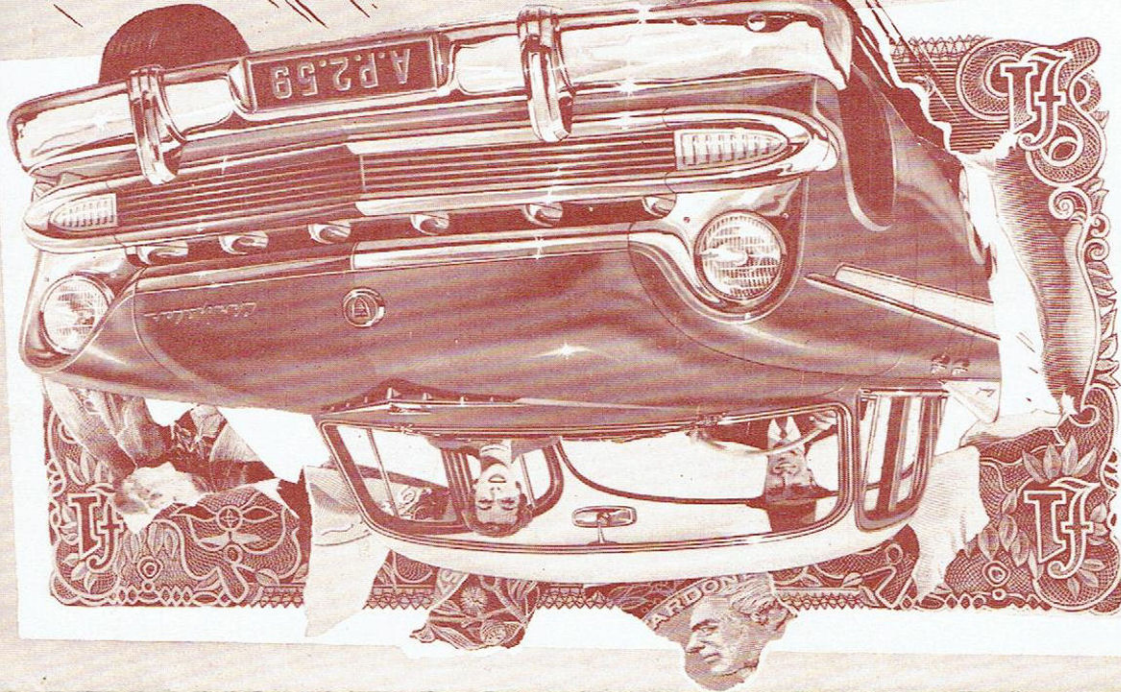
STATION COMMERCIAL  
AND STATION WAGON

FROM  
**£1792**  
PLUS TAX

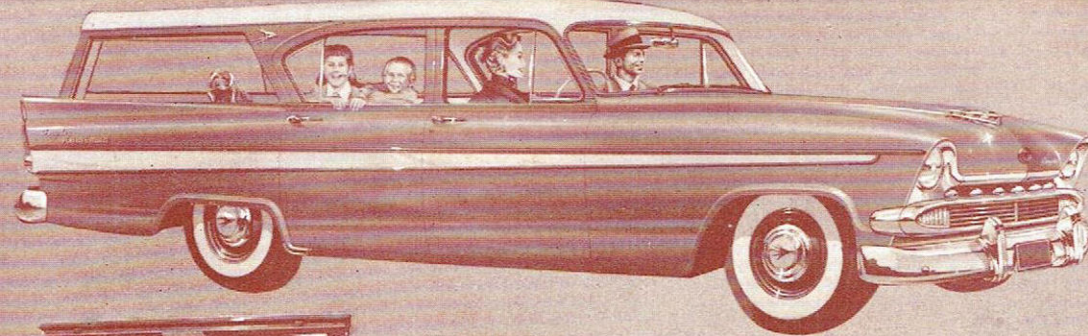


AP2-SA2

PRODUCT OF CHRYSLER AUSTRALIA LIMITED, ADELAIDE, SOUTH AUSTRALIA.



**CHRYSLER  
BREAKS  
THROUGH  
THE POUND  
BARRIER!**



This handsome, versatile vehicle leads a double life . . . equally at home when there's work to be done, or you're driving for fun! Plainsman brings with it all the owner benefits of completely integrated design, sound construction, and cost-saving factory production methods. It has all the luxury and comfort of the "Royal", plus enough space in back to make a bed for two "six footers".



**CHRYSLER PLAINSMAN**

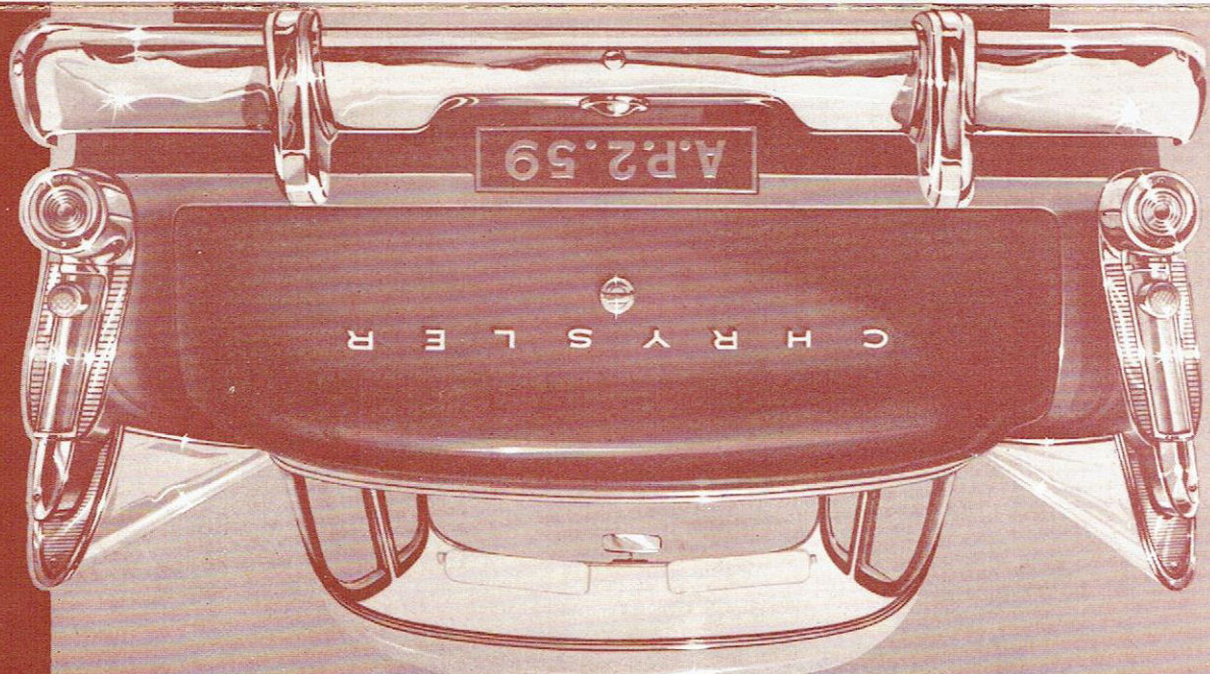
STATION COMMERCIAL  
AND STATION WAGON

FROM  
**£1792**  
PLUS TAX



AP2-SA2

PRODUCT OF CHRYSLER AUSTRALIA LIMITED, ADELAIDE, SOUTH AUSTRALIA.

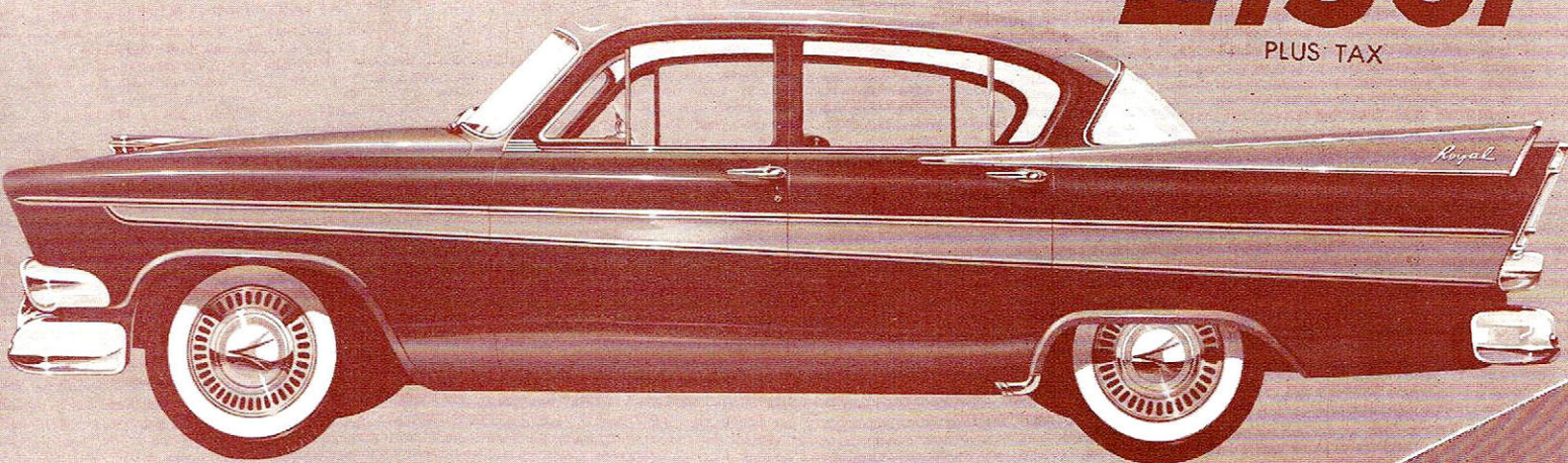


**You could pay  
hundreds more  
for your new car  
and still not get  
the extra safety  
—ease of hand-  
ling—and rugged  
dependability of  
Chrysler Royal**

Famous Chrysler Quality is now within your reach!

FROM **£1361**

PLUS TAX



# The Magnificent **CHRYSLER ROYAL**

Chrysler shatters all previous standards of motor car value! Here . . . at last . . . is the **one** first-quality, full size car that makes wide-spread appeal as a pounds, shillings, and sense investment in better motoring.

For those who buy regularly cars of this size, it makes sense to save many, many pounds through Royal's dramatically lower price. To be better off, too, with the new look of the much imitated "Forward Look" . . . a car with mechanical refinements that further enhance those typically Chrysler characteristics already well demonstrated by Royal's unique successes in major long distance Australian Trials.

For those driving smaller cars, Royal now provides an

easier step-up to the pride and pleasure of owning a fine car. Royal not only gives more value **now** . . . but will bring back even more when you eventually trade.

Whatever make of car you are considering, get your Royal distributor's or dealer's fair appraisal of your present vehicle and see how **easy** it is to own Australia's biggest automotive value.

**We aim to take care of our own!**

Chrysler's pledge is backed by Australia-wide specialised service and genuine MoPar Parts. There is no substitute for the double protection which Chrysler provides for Owners through the availability of MoPar Parts. Not only does Chrysler specify that MoPar Parts conform exactly to new vehicle standards, but also checks and guarantees that they do!

with the "Powerflow"

## 117 B.H.P. BIG SIX

Everything about this car says "Luxury" . . . everything except its price! All the power you need . . . smooth, responsive, effortless! Moderate extra cost "Power Assists" add to driving pleasure; Power Steering, Safety-Sure Power Brakes, or, instead of conventional transmission, Automatic Overdrive or Push-Button PowerFlite Automatic Transmission.

## 10,000 MILES OR 12 MONTHS WARRANTY

**... and unprecedented  
after-sales service!**

or the "Fury"

## 220 B.H.P. V-8

If you prefer V-8 Performance, why not drive Australia's most modern, most powerful, most economical V-8? Yes, 220 B.H.P. . . . it's the nearest thing on earth to flying! The Royal V-8 is distinctively styled in both interior and exterior colour ensembles. Fully Automatic Push-button PowerFlite Transmission is standard equipment.

# MoPAR

Optional at moderate extra cost:—slotted chrome wheel trims; white wall tyres; lower exterior body moulding.



**CHRYSLER — PIONEERS OF THE FORWARD LOOK!**