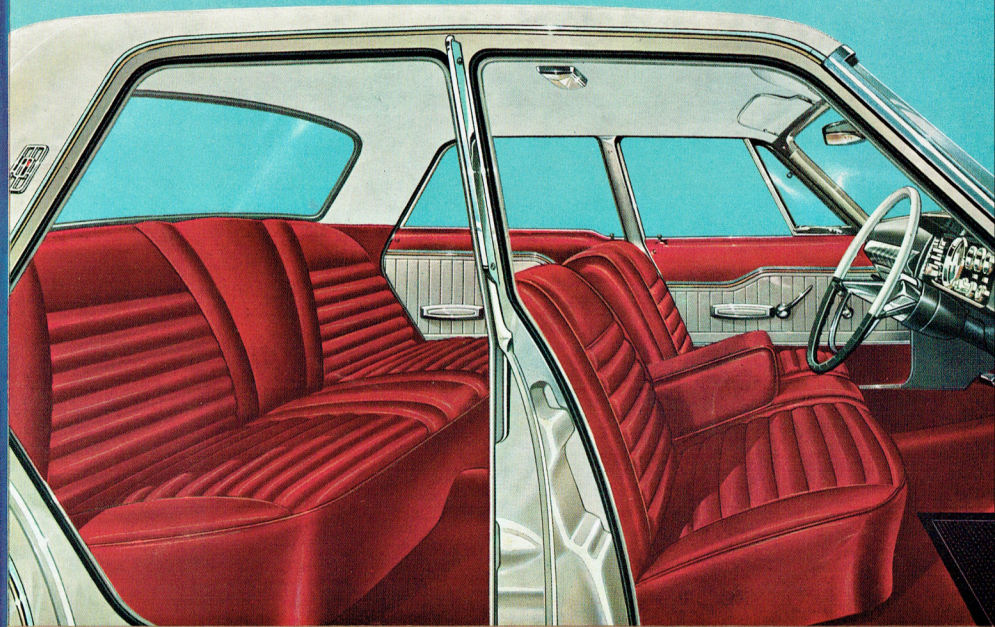
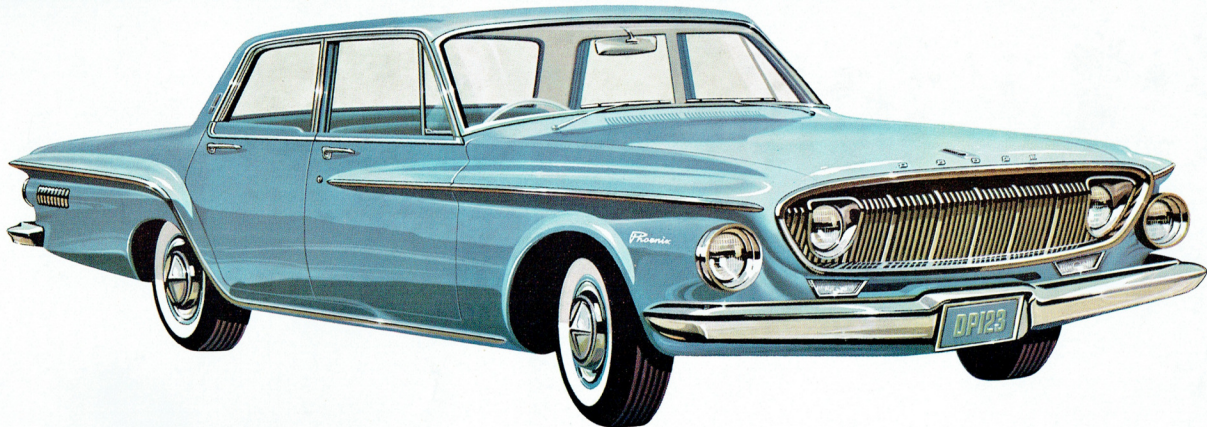


FOR THE MEN AND WOMEN WHO DEMAND THE BEST...



Step
into
"Luxury
Unlimited"
in the
new

DODGE PHOENIX
by CHRYSLER



A REMARKABLE AND VERY BEAUTIFUL CAR

INSIDE, THERE'S "LUXURY UNLIMITED"

To step into the Dodge Phoenix is to step into a new world of luxury and breath-taking beauty. You sink into the deeply sprung seats, padded with plastic foam and having a revolutionary new sponge vinyl upholstery that has to be seen (and felt) to be believed.

Front seats can be used in two ways — for three people, or with centre arm rest down, as two individual sports car bucket seats. In height and slant, the front seat will be custom-fitted to your build by your Dealer before delivery of the car. Carpets are deep, lush and luxurious.

Inside Phoenix, you even have the kind of weather you want. Heater, demister and fresh air supply provided. With the heater you can set both the temperature and degree of air flow. The blower can also be used to regulate the flow of cool air.

All gauges are directly in front of the driver and well hooded against glare. A protective safety, crash pad is provided on the dash panel. Vision all round has minimum obstruction and the windscreen is of tinted, anti-glare glass. Windscreen washer is foot operated. Equipment includes courtesy lights on all 4 doors.

The theme of "Luxury Unlimited" is even carried through in the long, wide luggage boot. The floor covering is of high quality carpet. The luggage boot automatically lit when the lid is raised.

SO QUIET TO DRIVE

Driving in Dodge Phoenix is whisper quiet. There's not a squeak or rattle in the advanced Chrysler method of Uni-body construction. As a double precaution for the engine, the underbonnet is heavily soundproofed.

SO SMOOTH — SAFE — EASY TO DRIVE

Torsion-bars in front, instead of coil springs, plus long, wide, leaf springs at rear make every road a boulevard — and there is no side sway on curves, no nose-diving when braking. Torsion-air ride is a safer ride too — and this safety is backed up by big brakes, (total 195.2 sq. ins.) — Brakes are self adjusting, eliminating periodic servicing. Chrysler's exclusive "Safety-rim" wheels are, of course standard. With TorqueFlight 3 speed push-button automatic transmission, Dodge Phoenix practically drives itself. A parking sprag is fitted with automatic neutral reset. Except for front suspension ball joints, chassis lubrication is a thing of the past — and the ball joints are lubricated only every 32,000 miles.

THRILLING POWER

The O.H.V., V-8 engine is rated at 48.9 H.P., developing 230 B.H.P. @ 4,400 r.p.m. An Alternator replaces the generator. The Alternator keeps charging even when the engine is idling.

BRIEF DIMENSIONS

Wheelbase 116"; Overall length 202"; Max width 76.5"; Height 54"; Weight 3374 lbs.

Read enough to tempt you? Then take the next step — Step right in behind the wheel and try Dodge Phoenix for yourself. It's an experience you should not miss.

An assured continuity of parts and the finest specialised service back this fine car. They are available through your authorised Dealer.



The policy of Chrysler Australia Limited is one of continual improvement in design and manufacture, wherever possible to assure a still finer car. Hence, specifications, equipment and prices are subject to change without notice.

CHRYSLER AUSTRALIA LIMITED

