

SERIES

5H

MODELS

560H-6 560H-8
575H-6 575H-8

NOMINAL PAYLOAD

5 TONS

DODGE Series 5H—A full 5 tonner. Two models 160" and 175" 18,500 lbs. and 19,500 lbs. provide an excellent selection for 3 tipper, van, farm and general purpose use. Chassis and cowl made of special bodywork.



Dependable
Dodge

JOB-RATED POWER! C

313 CU. IN.

V8



"HIGH TORQUE" V.8 ENGINE

This big 313 cu. in., well proven V-8 develops 182 B.H.P. at 4,400 r.p.m. or can be governed to 178 B.H.P. at 3,900 r.p.m. if required. A high 270 lbs. ft. torque occurs at 2,400 r.p.m. Economy with power is achieved through special attention in design to manifolding, head form, 180° opposing valving and carburetion. Other features are hydraulic tappets, exhaust valve rotators, sealed crankcase ventilation, crankshaft dynamic balancer, tri-metal con-rod bearings. Compression designed for use of standard fuels.

Now! **FINEST EVER**
IN A LONG LINE OF

Dodge

"Job-Rated"
Trucks

**TO COMPARE IS TO BUY
DEPENDABLE DODGE**



CHRYSLER
AUSTRALIA LTD.

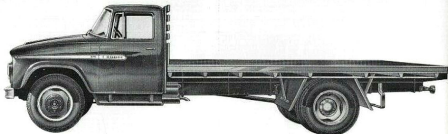
SERIES**5H****MODELS**

560H-6 560H-8

575H-6 575H-8

G.V.W.s.**18,500 lbs., 19,500 lbs.**

DODGE Series 5H—A full 5 tonner. Two models 160" and 175" and two G.V.W. ratings, 18,500 lbs. and 19,500 lbs. provide an excellent selection for 5 ton operators—platform, tipper, van, farm and general purpose use. Chassis and cowl models available for fitment of special bodywork.



JOB-RATED POWER! Choice of 2 Power Plants

313 CU. IN.

V8225 CU. IN.
'HEAVY DUTY'
SLANT "6"

"HIGH TORQUE" V.8 ENGINE

This big 313 cu. in., well proven V-8 develops 182 B.H.P. at 4,400 r.p.m. or can be governed to 178 B.H.P. at 3,900 r.p.m. if required. A high 270 lbs. ft. torque occurs at 2,400 r.p.m. Economy with power is achieved through special attention in design to manifolding, head form, 180° opposing valving and carburetion. Other features are hydraulic tappets, exhaust valve rotators, sealed crankcase ventilation, crankshaft dynamic balancer, tri-metal con-rod bearings. Compression designed for use of standard fuels.

HEAVY DUTY "SLANT SIX" ENGINE

Has "stellite" exhaust valves and auto-rotators, heavy-duty roller type timing chain, polyacrylic valve seals, crankshaft dynamic balancer. Engineered to operate on standard fuels, this "Big Slant Six" provides amazing economy while producing 133 B.H.P./204 lb. ft. torque performance. Slanting the engine has made possible the use of a fuel-saving intake manifold with 6 individual branches and exhaust manifolds with long radius curves. Each cylinder thus gets the same fuel-air mixture and expulsion of burnt gases is fast and complete.



EXCLUSIVE CHRYSLER ALTERNATOR FOR BOTH ENGINES . . .

Provides full charge, even at low engine speeds—Longer battery life. Easier cold weather starting. Particularly desirable for high electric loads such as auxiliary lights, 2-way radios, etc.

**TO COMPARE IS TO BUY
DEPENDABLE DODGE**



TOP STANDARDS IN DRIVER COMFORT AND EFFICIENCY

- Full bench-type, 3-man seat, adjustable fore and aft, up and down ● Squab lay-back angle also adjustable making available any number of seat positions ● Long-wearing "breathable" seat trim ● Attractive, serviceable two-tone door trim ● Comfortable, non-sag seating, thick foam over springs ● Instruments can be checked with a flick-of-the-eye ● Instruments include fuel gauge, ammeter, temperature gauge, oil pressure gauge, speedometer ● Turn signal indicators, interior light ● Safety dished steering wheel ● Doors completely weather sealed ● Quick release "Orscheln" hand brake lever ● New, controlled cab ventilation. Air intake screened and baffled and channelled into cab through two independently controlled ducts ● Pendant clutch and brake pedals ● Turn-key starter ● Roomy glove-box ● Safety door locks ● Press button door handles ● Dual sun visors ● Large rear view mirror ● Safety glass all round ● 2 speed windshield wipers.

RUGGED STYLING WITH A PRACTICAL PURPOSE

- Sloping bonnet for steep-angle forward vision ● Wide, one-piece engine hood for maximum engine accessibility ● Dual headlights ● Flashing turning lights front and rear ● Panoramic windshield with narrow corner pillars for maximum visibility ● White grill-bars, bumper and headlamp bezels for night safety.

SMOOTH RIDING ALL WAYS

Springing is long, soft, yet with ample load carrying capacity. Direct, double acting shock absorbers are fitted at front.

ALL AUSTRALIAN SHEET METAL

Chrysler is the only truck manufacturer producing all its sheet metal parts in Australia. Advantages in case of replacement are obvious.

weight ratings

	4 cyl.		V8	
	160"	175"	160"	175"
Wheelbase	160"	175"	160"	175"
Gross vehicle weight	18,100 lbs.	18,500 lbs.	19,500 lbs.	19,700 lbs.
Front axle unladen weight	3,137 lbs.	3,187 lbs.	3,273 lbs.	3,302 lbs.
Rear axle unladen weight	2,747 lbs.	2,772 lbs.	2,767 lbs.	2,792 lbs.
Total tare weight	5,874 lbs.	5,959 lbs.	6,039 lbs.	6,094 lbs.
Available for body and payload	12,226 lbs.	12,541 lbs.	13,461 lbs.	13,606 lbs.

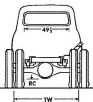
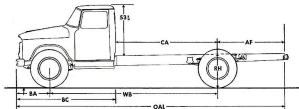
SERIES

5H

chassis dimensions

	4 cyl.		V8	
	160"	175"	160"	175"
Wheelbase	160"	175"	160"	175"
Overall length inc. bumper	(O.A.L.)	361"	361"	361"
Back of cab to rear axle	(C.A.)	91"	91"	106"
Rear axle to end of frame	(R.A.)	70"	70"	70"
Bumper to front axle	(F.A.)	34.8"	34.8"	34.8"
Bumper to back of cab	(B.C.)	103.6"	103.6"	103.6"
Height to top of chassis—Rear loaded	(R.H.)	33.38"	33.38"	33.38"
Road clearance (min.)	(R.C.)	16.4"	16.4"	16.4"
Tread—Front wheel	(T.W.)	63.4"	63.4"	63.4"

RECOMMENDED BODY LENGTHS:—160" w.b. 14', 175" w.b. 15' 6"



standard specifications

ENGINE GENERAL—V8 O.H.V. Bore 3.875", stroke 3.312". Displacement 313 cu. in. Compression ratio 7.25:1. R.A.C. horsepower 48.0 @ 3,400. 102/14,400 r.p.m. Torque 270 lbs. ft. @ 3,600 r.p.m.

ENGINE GENERAL "SLANT SIX"—O.H.V. Bore 3.49". Stroke 4.125". Displacement 234.7 cu. in. Compression ratio 7.3:1. R.A.C. horsepower 27.7. 84/H. 133 @ 3,600 r.p.m. Torque 204 lbs. ft. @ 3,600 r.p.m.

LUBRICATION, V8 & "SLANT SIX"—Pressure feed to all bearings by rotary-type pump. Suction strainer, recirculating system and oil filter—air element. Full flow replaceable element type oil filter. Crankcase capacity (oil filter) 8.3 pints (V8 and 6).

COOLING SYSTEMS, V8 & "SLANT SIX"—Fan and water type radiator, frontal area 284.3 sq. in. Circulation by water pump with thermostat control. Total cooling system capacity—"Slant Six" 25 pints, V8 33 pints.

ELECTRICAL SYSTEMS—V8 & "SLANT SIX"—Electrical supply by 35 amp Alternator. 12 volt, 48 amp battery. Turn signal lamps front and rear. Four sealed beam headlights. Front parking light. Dual rear lights.

FUEL SYSTEMS—"SLANT SIX"—Single throat downdraft carburetor with hand throttle and choke controls. Paper element fuel line filter. Oil bath air cleaner. O.H.V. V8 Dual downdraft carburetor with hand throttle and choke controls. Paper element fuel line filter. Oil bath air cleaner. Fuel tank capacity 18 gallons.

CLUTCH—Single plate, dry disc incorporating spring-actuated hub vibration damper. Clutch diameter 17", shaft 5/16 in. dia.

TRANSMISSION—4-P. Type 405. 4-speed synchromesh on 3rd, 3rd and 4th gears. Ratios—1st, 1.88:1; 2nd, 1.34:1; 3rd, 1.08:1; 4th, 1:1; Reverse, 0.58:1. S.T.O. opening on right hand side.

FRAME—Pressed steel channel. Dimensions 10" x 3" x .312". Frame width S.A.E. standard.

PROPELLER SHAFT—Two piece shaft with cone bearing.

AXLE FRONT—Capacity 5,500 lbs.

AXLE REAR—Rating 6.8:1. Capacity 15,000 lbs. Full floating type, bevel drive gear and pinion. Four pinion differential. Saddle mounted pinion.

BRAKES, HAND—External contracting on cast-iron. Quick release "Circle" handbrake lever under R.H. side instrument panel. Handbrake lining area 57.3 sq. in.

BRAKES, SERVICE—Type-hydraulic. Front brakes, 16" dia., two piston single cylinder. Rear 12" dia. two cylinder floating drum. Vacuum booster. Total lining area 474.3 sq. in.

SPRINGING—Leaf spring. Spring capacities: Front each 2,300 lbs., Rear, each 6,720 lbs. (line load only). Wrapped steel eye front springs. Double acting shock absorbers at front.

STEERING—Worm and 3 mesh roller. Ratio of gear 22.4:1. 18" safety tilted steering wheel. Turning circle 166" w.b., 99" (175" w.b., 63").

WHEELS—20 x 6.50—6 stud. 4pc.

TYRES—4-8.25 x 20 x 10.

STANDARD EQUIPMENT—Cab and chassis, front bumper, spare wheel Tool kit and jack. External pump.

OPTIONAL EQUIPMENT—Engine type and rate. 4-8.25 x 20 x 10 Road Lug tires. 2 standard. Engine governor.

FINISH—Frame, external steps and wheels black. Bumper, grille and headlamp bezels, white.

INSTRUMENTS—Speedometer, oil, temperature and fuel gauges, ammeter.

12 MONTHS OR 100,000 MILE WARRANTY
 Chrysler
 Parts and Accessories available nationwide

The policy of Chrysler Australia Limited is one of continuous improvement in design and manufacture wherever possible to ensure that their cars and commercial vehicles, buses, trucks, vans, equipment and prices are subject to change without notice.



CHRYSLER AUSTRALIA LTD.