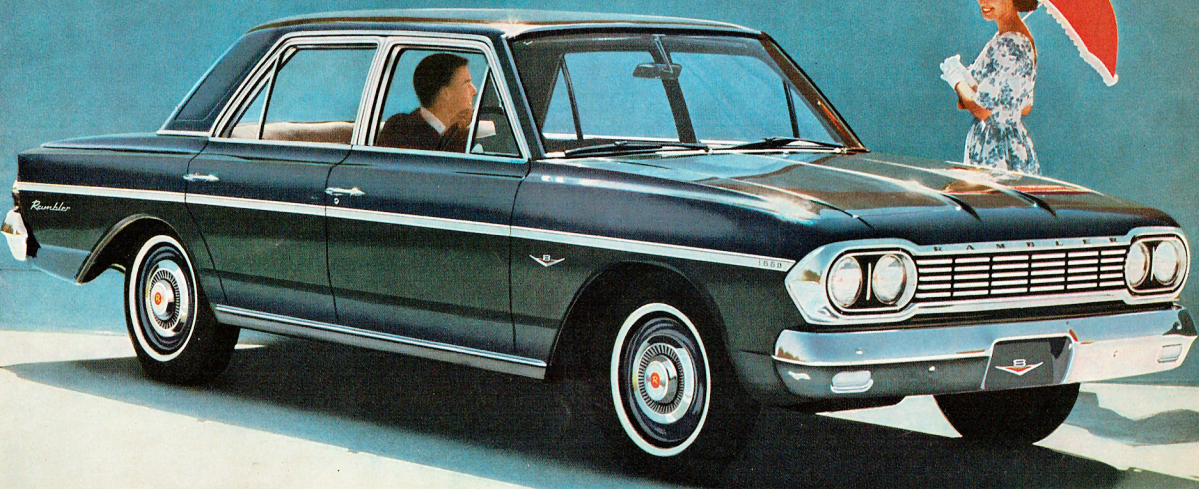
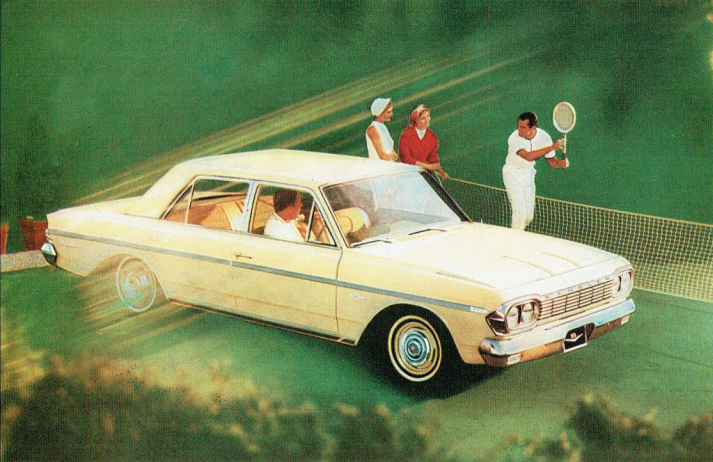


# Rambler V8

AMERICA'S PRESTIGE CAR FOR AUSTRALIANS





---

## RAMBLER...V8 AND GREAT LEADS AGAIN IN POWER, STYLING, SIZE, EXTRA VALUES

---

Direct from the experienced hands of American Motors Corporation, U.S.A. "Car of the Year" Award-winning designers and engineers, comes a brilliant new Rambler series — opening a new dimension in motoring pleasure for discerning Australians.

*Step up now to the new prestige of big car ownership! Step out in the space, the luxury that is Rambler! Thrill to the breathtaking performance of Rambler's 287 cu. in. V8 motor, to Rambler's Magic Carpet smoothness and to Rambler's famous Economy. Rambler is big in every sense — in size, in interior space, in power, performance, comfort, features — but most of all, BIG in value. Follow the lead of the 600,000 discerning Americans who, this year, will buy Rambler, America's big, prestige car that's So Right for Australians!*

### RAMBLER DE LUXE V8 SEDAN

From gleaming grille to cavernous boot the Big Rambler V8 offers more of what every motorist wants. Rambler's unique "Uni-side" construction gives wider doors for easy entry. Style-setting "Scena-ramic" curved side windows offer maximum visibility, and make this big car even more spacious. Luxury seats give the relaxed ease of your favourite lounge chair. Rambler's own 287 cu. ins. V8 motor and satin smooth three-speed transmission take all the effort out of driving. **Rambler's So Right for You!**

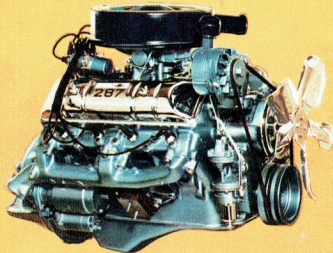
### RAMBLER LUXURY V8 SEDAN

Take the main ingredients of the Big Rambler DeLuxe. Add the spice of individual reclining front seats, full dress wheel trims, power brakes, heater-demister, and you have the most delectable American dish ever offered the Australian motorist — RAMBLER LUXURY V8 — the ultimate in modern travel. The RAMBLER LUXURY V8 is a car for the connoisseur, a car that makes driving a pleasure in any conditions. **Rambler's So Right for You!**

### RAMBLER V8 CROSS COUNTRY STATION WAGON

Exciting playmate, tireless worker, prestige-builder, the Big Rambler Cross Country V8 is Australia's largest, most luxurious station wagon. Individual reclining front seats, full dress wheel trims, power brakes, heater-demister, windshield washers and 287 cu. in. V8 motor with satin smooth three-speed automatic transmission, make this Rambler a dream to drive. Delight in its six-passenger (80 cu. ft.) luggage space, its roominess. Savour the pleasure of the envious glances you'll attract from all you pass . . . in Rambler's Cross Country you pass many! **Rambler Cross Country V8, America's Favourite Wagon, is so Right for Australia — So Right for You!**





### ALIVE WITH NEW V8 POWER!

This is the mighty 287 cu. inch V8 engine that makes driving Rambler an "out of this world" experience. Rambler's own "Tri-poised" engine mounting system, at the car's centre of gravity, provides exceptional smoothness at all speeds. Couple this performance with famous Rambler economy, reliability and low maintenance and here's a motor which offers most for the motorist.

### SOLID AND SAFE WITH RAMBLER'S 'UNI-SIDE' CONSTRUCTION

Rambler's exclusive "Uni-side" construction is years ahead of the industry. A one-piece outer uni-side is completely galvanised and welded to a one-piece inner uni-side. The whole double-strength panel thus formed is a tremendously strong box structure around door openings and rocker panels. Rounded 'no-weld' corners at pillars give additional strength and make doors fit snugly. This new and better basic structure, plus the extensive use of galvanised steel, gives Rambler greater safety, longer lasting quality and more protection against rust and corrosion.



### CURVED GLASS BEAUTY

Rambler's basic built-in body strength from the "Uni-side" construction, permits the use of style setting "Scena-ramic" curved glass side windows, which conform to the flowing lines that are uniquely Rambler. Use of curved glass side windows increases visibility and allows that extra space at shoulder height, which makes it so easy to seat six — sometimes eight — in the roomy Rambler interior.



### RAMBLER'S 'UNDER THE SKIN' FEATURES!

These are the conveniences and comforts you don't see... cushioned-acoustical ceiling material that hushes travel sounds, ceramic-armoured exhaust system that defies rust and the "under the deck" lock-up compartment in the station wagon where your valuables, like cameras or money, are secret and safe. Rambler gives you more of everything you want in motoring luxury and pride of ownership!

### BRIEF SPECIFICATIONS

#### RAMBLER DeLUXE V8 SEDAN

Engine: 198 b.h.p. 287 cu. in. V8. Bore 3 1/2", stroke 3 1/2". Two barrel carburettor. Compression ratio 8.7:1. Alternator. Rated H.P., 45. Dimensions: Wheelbase, 112 in. Length, 190 in. Width, 71.32 in. Transmission: Three-speed automatic. Suspension: Heavy Duty Coil Springs and Shock Absorbers all four wheels. Brakes: Double Safety Brake System. Bonded linings, self-adjusting. Tyres: 700 x 14. Fuel Tank capacity: 15.8 Imp. gallons. Windshield washers. Luxury bench type seats. Turning Circle: 37ft. Padded fascia panel and Interior Sun Visors. Back-up lights.

#### RAMBLER LUXURY V8 SEDAN

Engine: 198 b.h.p. 287 cu. in. V8. Bore 3 1/2", stroke 3 1/2". Two barrel carburettor. Compression ratio 8.7:1. Alternator. Rated H.P., 45. Wheelbase 112 in. Length, 190 in. Width, 71.32 in. Transmission: Three-speed automatic. Suspension: Heavy Duty Coil Springs and Shock Absorbers all four wheels. Brakes: Power. Bonded linings, self-adjusting. Tyres: 700 x 14. Fuel Tank capacity: 15.8 Imp. gallons. Turning Circle: 37ft. Individual reclining front seats, heater-demister, windshield washers, full dress wheel trims. Padded fascia panel and interior sun visors. Back-up lights.

#### RAMBLER CROSS COUNTRY V8 STATION WAGON

Engine: 198 b.h.p. 287 cu. in. V8. Bore 3 1/2", stroke 3 1/2". Two barrel carburettor. Compression ratio 8.7:1. Alternator. Rated H.P., 45. Dimensions: Wheelbase, 112 in. Length, 190.5 in. Width, 71.32 in. Transmission: Three-speed automatic. Suspension: Heavy Duty Coil Springs and Shock Absorbers all four wheels. Brakes: Power. Bonded linings, self-adjusting. Tyres: 700 x 14. Fuel Tank capacity: 15.8 Imp. gallons. Turning Circle: 37ft. Individual reclining front seats, heater-demister, windshield washers, full dress wheel trims. Padded fascia panel and interior sun visors. Back-up lights.

**ONLY RAMBLER GIVES YOU THESE PROTECTIONS:** 33,000 mile (or 3 year) chassis lubrication period. Many parts are lubricated for life. 4,000 mile engine oil and filter change period. No draining of transmission and rear axle oil is necessary.

# Rambler

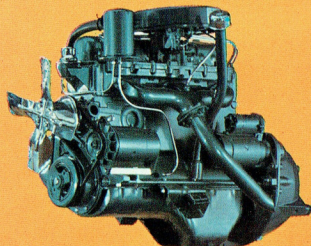
## AMERICAN

America's Luxury Six that's  
highways ahead!

Yes sir! That's the Rambler 'American' Big Six — the car with instant appeal to the discerning motorist — the car that is undisputed champion of its class. The 'American' is big — in space — in power — in features. It's a full six-passenger car, and, with Rambler's style-setting "Scena-ramic" curved side windows, Rambler Classic's "Uni-side" construction and wide-opening doors, has space to spare. The mighty understressed Rambler Classic Six motor (winner of Class 'F', automatic, in the 1963 Mobil Economy Run with 30.04 m.p.g.) coupled with a smooth-as-silk three-speed automatic transmission, makes city driving a pleasure and lazes effortlessly at mile-devouring speeds on country highways or by-ways.

American Motors' Car of the Year Award-winning designers and engineers have blended all these features into an eye-pleasing, concisely tailored design that brings envious glances for 'American' owners wherever they travel.

**Yes Sir! Rambler 'American' is indeed the Big Six that is highways ahead.**



The famous 138 b.h.p. Classic 6 engine which powers the 'American' (see next column).



### SPECIFICATION

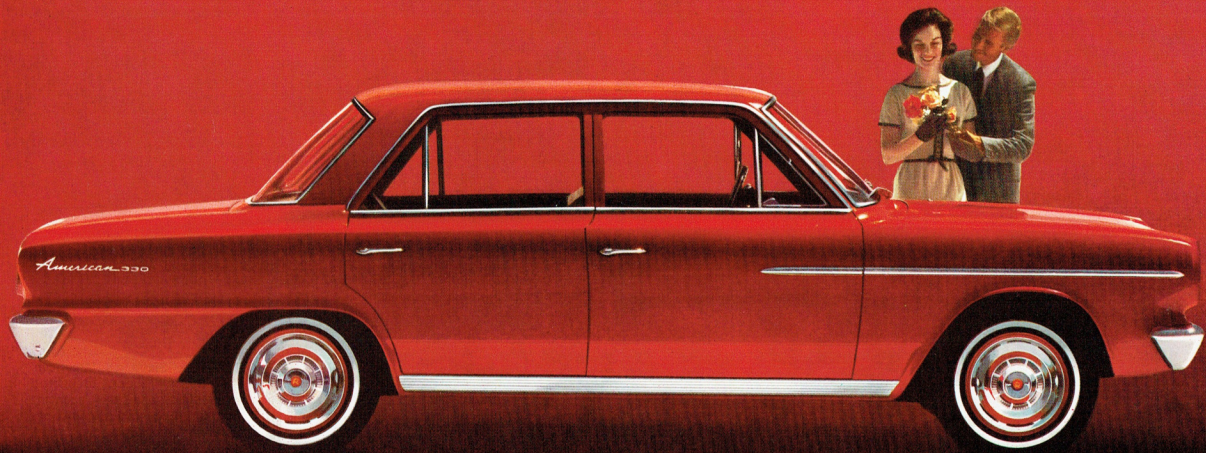
**'AMERICAN' LUXURY SIX AUTOMATIC.** Engine 138 b.h.p. Six. Bore  $3\frac{1}{8}$ ", stroke 4". Dual throat carburettor. **Transmission:** Three-speed automatic. **Dimensions:** Wheelbase — 106 ins. Length 177.25 ins. Width 68.56 ins. **Suspension:** Heavy Duty shock absorbers and springs. **Brakes:** Double Safety Brake System. Bonded linings, self adjusting. **Tyres:** 6.50 x 14. **Fuel Tank** capacity 13.3 gals. **Turning circle:** 36 ft. Luxury bench seats. Padded facia. Dress wheel trims. Windshield washers. (Manual transmission also available.)

### THE ENGINE WITH THE 'EDGE'!

Rambler's mighty understressed 138 b.h.p. Six gives 'American' eager-action power, delightful smoothness and the economy that has enhanced Rambler reputation throughout the world.

# Rambler AMERICAN

ARISTOCRATIC LEADER OF THE 'SIXES'



# Rambler V8

CROSS COUNTRY

AMERICA'S FAVOURITE STATION WAGON • PLAYER! WORKER! PRESTIGE BUILDER!



Built in Australia by Australia's Most Australian Motor Company — Sold and serviced through an Australia-wide network of RAMBLER Distributors and Dealers.  
AUSTRALIAN MOTOR INDUSTRIES LTD., whose policy is one of continuous progress, reserve the right to discontinue or change specifications, models or prices at any time without incurring obligations.