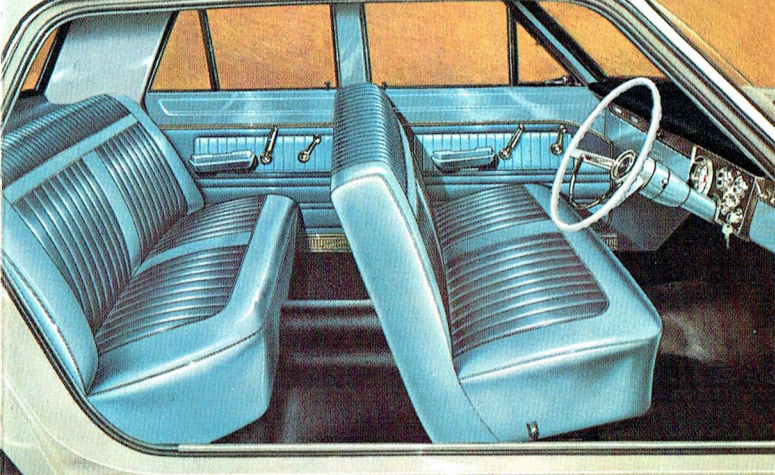


COMMAND PERFORMANCE!

**SIX**  
**GREAT NEW**  
**HITS FOR**  
**'65**





(Above) One of the many sparkling, two-tone trim combinations available with Valiant Sedans and Safari.



(Above) The luxury interiors of Valiant Regal and Regal Safari.

## SPECIFICATIONS

**DIMENSIONS.** Sedans—Wheelbase 106"; Max. overall length 187.9"; Max. overall width 69.0"; Height 55.0". Safari and Regal Safari—Wheelbase 106"; Max. overall length 188.7"; Max. overall width 69.0"; Tracks for all Valiants—Front 55.9", Rear 55.6".

**ENGINE O.H.V.** 30° inclined, 6 in line. Bore 3.40"; Stroke 4.125"; Piston displacement 225 cu. ins. Compression ratio 8.4 : 1; Taxable H.P. 27.7; Max. B.H.P. @ r.p.m., 145 @ 4,000.

**BRAKES.** Duo-servo, self-adjusting hydraulic. Total effective area 153.5 sq. ins.

**SUSPENSION.** Front-independent, lateral, non-parallel control arms with torsion bars, Rear-Longitudinal leaf springs.

**TYRES.** Valiant Regal—6.45 x 14 x 4 ply. White wall. Valiant 6.45 x 14 x 4 ply. Black. Regal Safari—6.50 x 14 x 4 ply. White wall. Safari—6.50 x 14 x 4 ply. Black.

**GENUINE CHRYSLER PARTS AND SPECIALISED SERVICE AVAILABLE NATIONWIDE.**

The policy of Chrysler Australia Limited is one of continual improvement in design and manufacture, wherever possible to assure a still finer car. Hence specifications, equipment and prices are subject to change without notice.



**CHRYSLER  
AUSTRALIA LTD.**





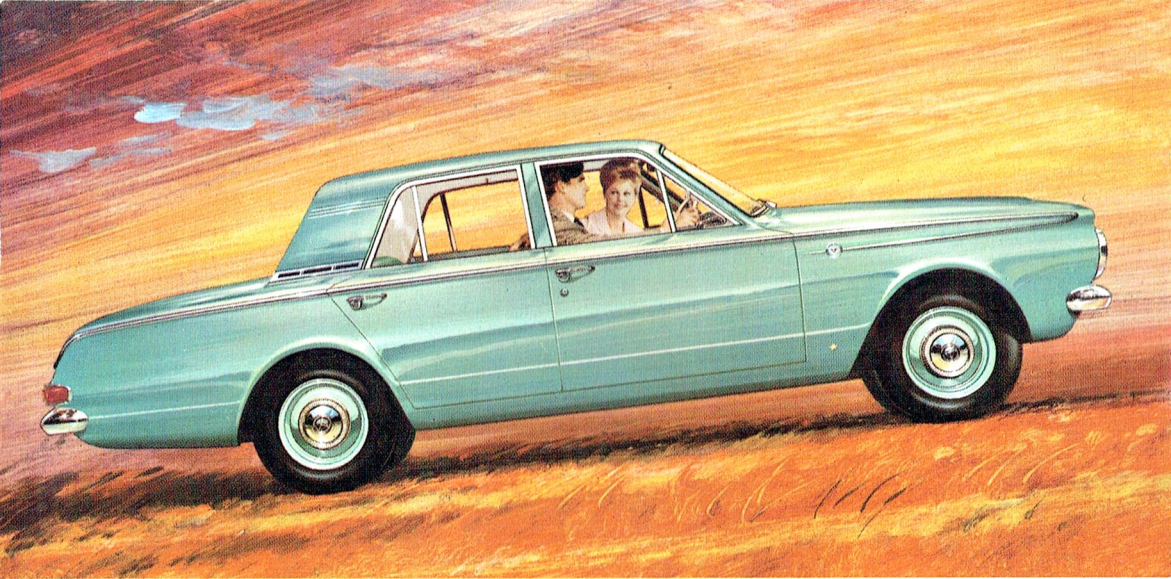


# SIX GREAT NEW Valiants

*..with Performance to Command!*

*Every year Valiant gets even better, and its value gets even bigger. Its added value now starts with Acrylic Enamel "Diamonite" finish that lasts despite time and weather. With its distinctive new look, new colours inside and out and quality tailored interiors, Valiant also puts value in style. The Valiant qualities of safety, stability and smooth riding are retained—with extra bonus safety features of self-adjusting brakes, "modified-zone" safety-section windscreen, full-width instrument-panel crash pad. Amazing, but true, Valiant has bettered the performance of its 225 "Slant Six" engine while retaining a balance with economy. In all, here is a range of vehicles designed for motorists who realise that quality does not cost . . . IT PAYS.*





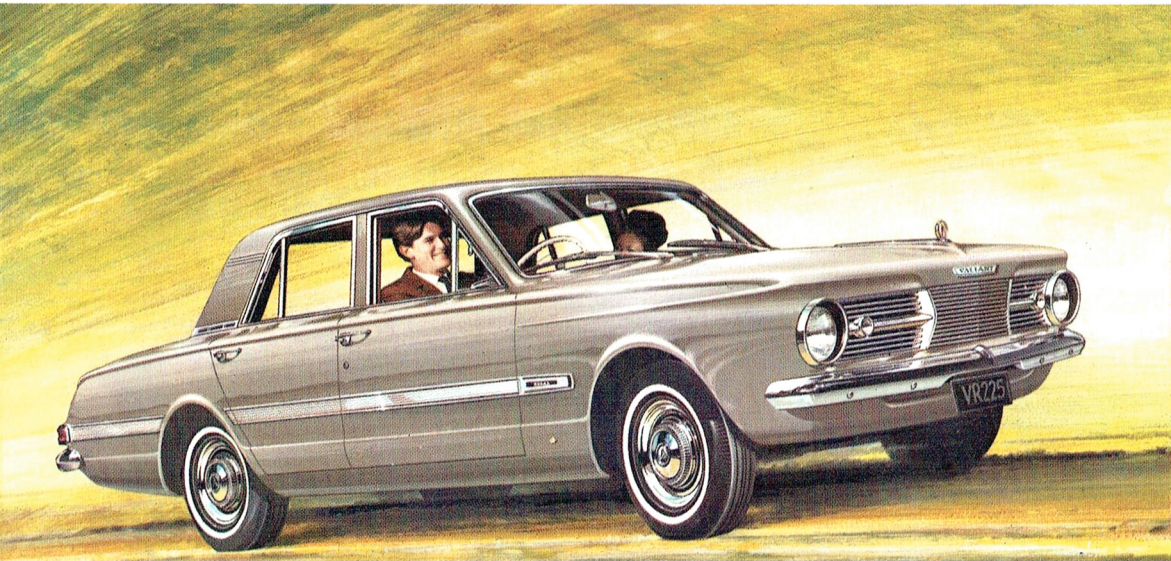
1

**VALIANT MANUAL.** An easy step-up to a big step ahead in value. This Valiant keeps you ahead with its brilliant 225 performance, torsion-bar suspension, big, self-adjusting brakes, 26½ cubic feet capacity luggage boot, Safety-Rim wheels, wide track and "Diamonite" body finish. Manual and Automatic Valiant sedans have similar styling as shown top left.

2

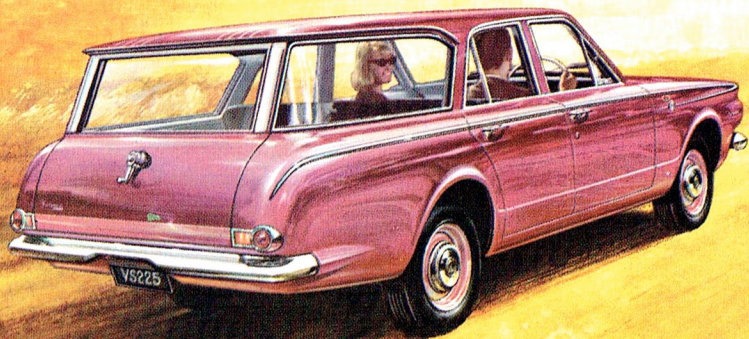
**VALIANT AUTOMATIC.** If you prefer automatic driving, there's nothing better offering than the combination of the smooth, lightning-fast changes of TorqueFlite combined with the adequate power and sustained, high torque of Valiant's 225 engine. Other specifications as for Valiant manual.

3



**VALIANT REGAL 225 AUTOMATIC.** De-luxe, foam-backed vinyl upholstery. Folding centre arm rests front and rear. Carpeted floors, heater, demister, windscreen washers, white-wall tyres, de-luxe wheel trims, Prismatic anti-dazzle interior rear-view mirror, distinctive styling. TorqueFlite 3-speed automatic transmission standard. Valiant Regal has distinctive body mouldings as shown in picture left.





5

**SAFARI MANUAL.** A full 7 feet inside from rear of front seat to inside of tailgate. Simple, one step operation to fold down rear seat. Big rear window winds down into tailgate, window can be locked in any set position, tailgate then cannot be opened from inside. Both Safari and Regal Safari have special heavier, rear suspension and bigger tyres than the sedans. Interior furnishings are as for the Valiant sedans.

6

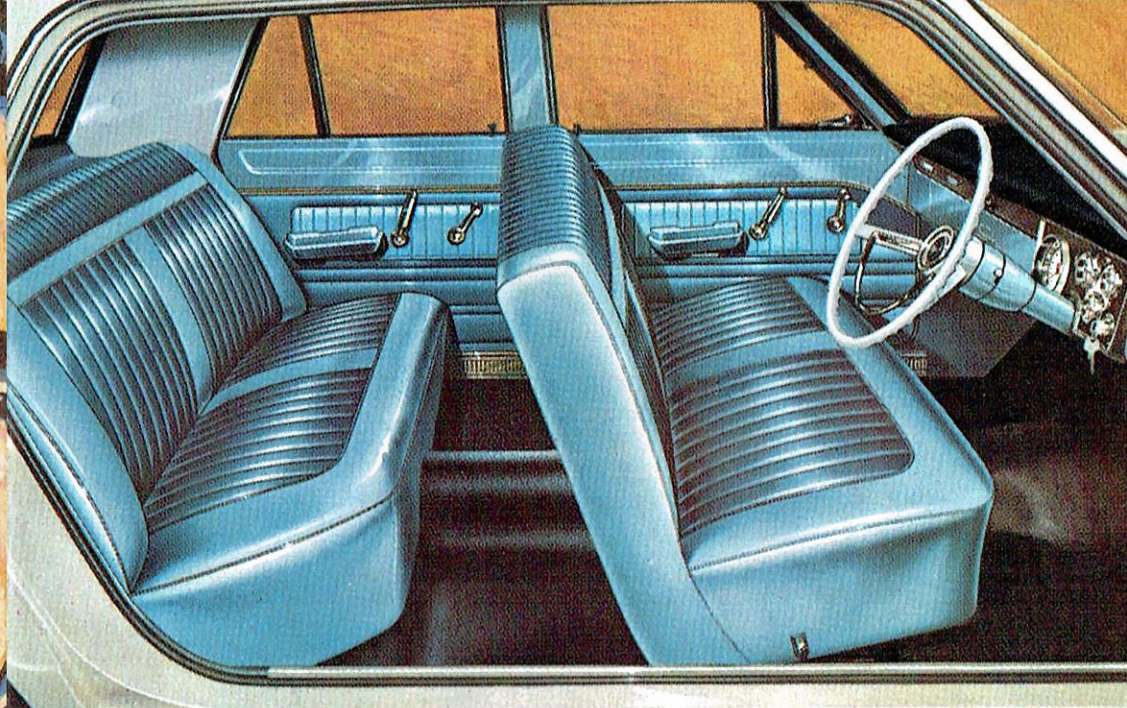
**SAFARI AUTOMATIC.** All the features of Safari plus the driving ease and safety of TorqueFlite 3-speed automatic transmission. Picture top left is rear view of Safari.

4

**REGAL SAFARI AUTOMATIC.** A de-luxe station wagon with the furnishings and appointments of the Regal Sedan. Has rear pillar dust deflectors; rear compartment sides and mat tone with passenger compartment upholstery. TorqueFlite automatic transmission standard. The distinctively styled Regal Safari is pictured right.







(Above) One of the many sparkling, two-tone trim combinations available with Valiant Sedans and Safari.



(Above) The luxury interiors of Valiant Regal and Regal Safari.

## SPECIFICATIONS

**DIMENSIONS.** Sedans—Wheelbase 106"; Max. overall length 187.9"; Max. overall width 69.0"; Height 55.0". Safari and Regal Safari—Wheelbase 106"; Max. overall length 188.7"; Max. overall width 69.0"; Tracks for all Valiants—Front 55.9", Rear 55.6".

**ENGINE O.H.V.** 30° inclined, 6 in line. Bore 3.40"; Stroke 4.125"; Piston displacement 225 cu. ins. Compression ratio 8.4 : 1; Taxable H.P. 27.7; Max. B.H.P. @ r.p.m., 145 @ 4,000.

**BRAKES.** Duo-servo, self-adjusting hydraulic. Total effective area 153.5 sq. ins.

**SUSPENSION.** Front-independent, lateral, non-parallel control arms with torsion bars, Rear-Longitudinal leaf springs.

**TYRES.** Valiant Regal—6.45 x 14 x 4 ply. White wall. Valiant 6.45 x 14 x 4 ply. Black. Regal Safari—6.50 x 14 x 4 ply. White wall. Safari—6.50 x 14 x 4 ply. Black.

**GENUINE CHRYSLER PARTS AND SPECIALISED SERVICE AVAILABLE NATIONWIDE.**

The policy of Chrysler Australia Limited is one of continual improvement in design and manufacture, wherever possible to assure a still finer car. Hence specifications, equipment and prices are subject to change without notice.

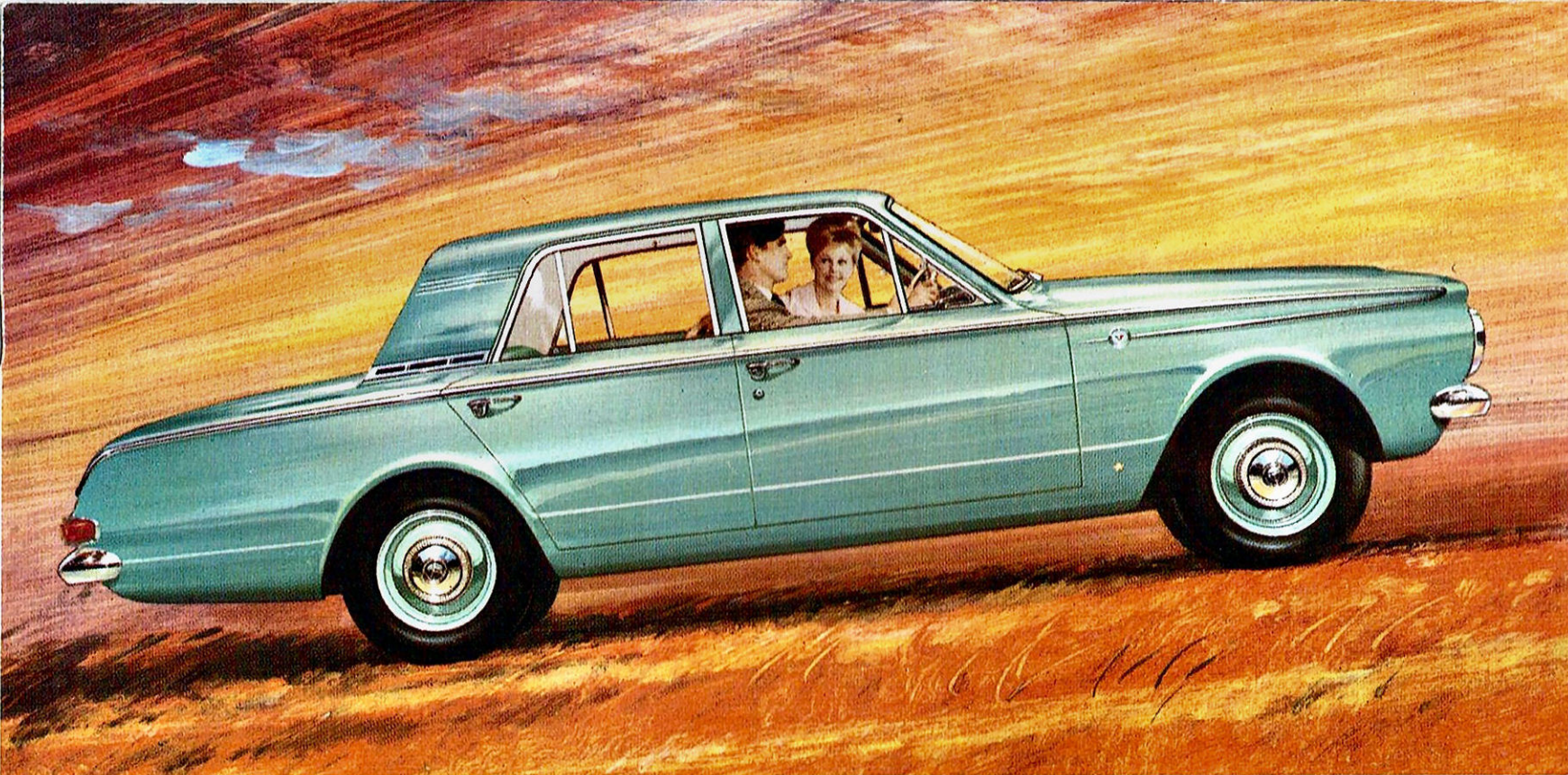




# SIX GREAT NEW Valiants

*..with Performance to Command!*

Every year Valiant gets even better, and its value gets even bigger. Its added value now starts with Acrylic Enamel "Diamonite" finish that lasts despite time and weather. With its distinctive new look, new colours inside and out and quality tailored interiors, Valiant also puts value in style. The Valiant qualities of safety, stability and smooth riding are retained—with extra bonus safety features of self-adjusting brakes, "modified-zone" safety-section windscreen, full-width instrument-panel crash pad. Amazing, but true, Valiant has bettered the performance of its 225 "Slant Six" engine while retaining a balance with economy. In all, here is a range of vehicles designed for motorists who realise that quality does not cost . . . IT PAYS.



1

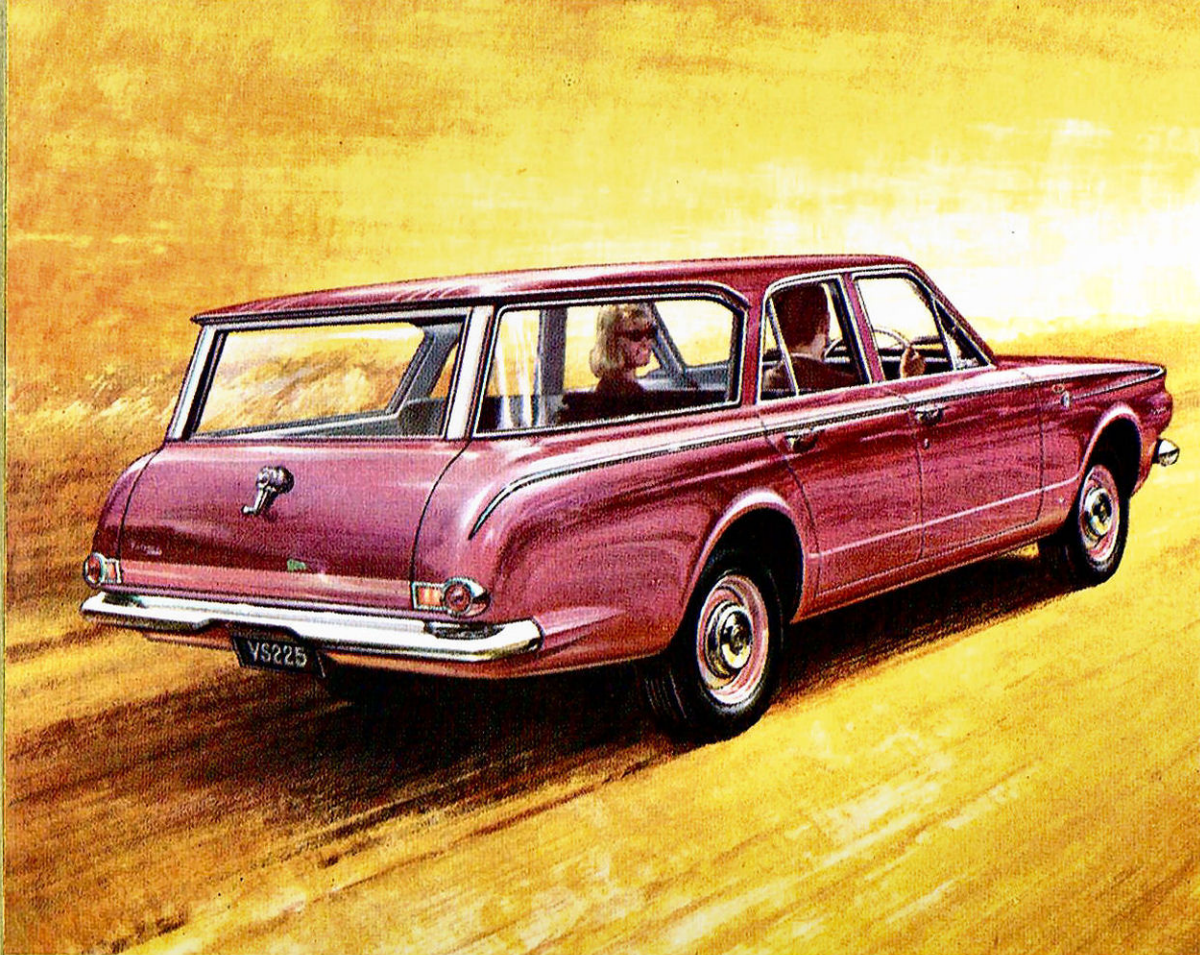
**VALIANT MANUAL.** An easy step-up to a big step ahead in value. This Valiant keeps you ahead with its brilliant 225 performance, torsion-bar suspension, big, self-adjusting brakes, 26½ cubic feet capacity luggage boot, Safety-Rim wheels, wide track and "Diamonite" body finish. Manual and Automatic Valiant sedans have similar styling as shown top left.

2

**VALIANT AUTOMATIC.** If you prefer automatic driving, there's nothing better offering than the combination of the smooth, lightning-fast changes of TorqueFlite combined with the adequate power and sustained, high torque of Valiant's 225 engine. Other specifications as for Valiant manual.

3

**VALIANT REGAL 225 AUTOMATIC.** De-luxe, foam-backed vinyl upholstery. Folding centre arm rests front and rear. Carpeted floors, heater, demister, windscreen washers, white-wall tyres, de-luxe wheel trims, Prismatic anti-dazzle interior rear-view mirror, distinctive styling. TorqueFlite 3-speed automatic transmission standard. Valiant Regal has distinctive body mouldings as shown in picture left.



4

**REGAL SAFARI AUTOMATIC.** A de-luxe station wagon with the furnishings and appointments of the Regal Sedan. Has rear pillar dust deflectors; rear compartment sides and mat tone with passenger compartment upholstery. TorqueFlite automatic transmission standard. The distinctively styled Regal Safari is pictured right.

5

**SAFARI MANUAL.** A full 7 feet inside from rear of front seat to inside of tailgate. Simple, one step operation to fold down rear seat. Big rear window winds down into tailgate, window can be locked in any set position, tailgate then cannot be opened from inside. Both Safari and Regal Safari have special heavier, rear suspension and bigger tyres than the sedans. Interior furnishings are as for the Valiant sedans.

6

**SAFARI AUTOMATIC.** All the features of Safari plus the driving ease and safety of TorqueFlite 3-speed automatic transmission. Picture top left is rear view of Safari.

