

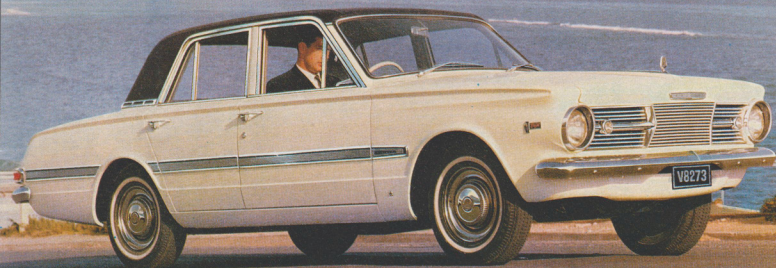
"273" V8
PERFORMANCE
WITH POWER
BRAKES..

AND
LUXURY
LIKE THIS-

DESERVE
TO BE
LOOKED
INTO!

IT'S THE NEW **Valiant** 

Valiant **V8**..



Here is more than a power option for the Valiant you know . . . and like, so well. Here is a distinctive model, individually engineered all through so that the Valiant qualities of safety, stability and smooth riding are retained while providing the higher levels of performance . . . A V8 engine specially designed for Valiant, and with cooling and exhaust systems to match . . . Power Brakes standard and finned brake-drums . . . A special V8 edition of TorqueFlite 3-speed automatic transmission . . . Heavy-duty rear axle . . . Special rear springs . . . Even the wheels and tyres are different . . . Overall, and in true Valiant tradition, this is a car that is **RIGHT** from the word **GO!**



VALIANT V8 SEDAN AND SAFARI V8 STATION WAGON have the handsome exterior styling of Regal and Regal Safari but with distinctive touches to mark the V8 model. A V8 motif is also on the inside of the front doors. Sedan interior has individual styling, incorporating individual front seats and console floor gear selector. As a Station Wagon needs to accent load capacity, Safari V8 retains the seating and automatic gear selector of Regal Safari—but has a chrome roof-rack. Naturally, Valiant Safari V8 has all the mechanical features of the V8 sedan.

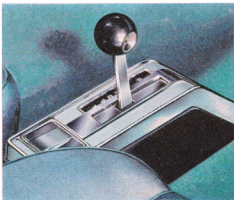
MATCHES ITS "GO" WITH LIMOUSINE LUXURY!



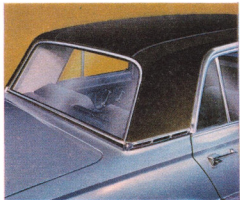
VALIANT V8 MATCHES ITS "GO" WITH LIMOUSINE LUXURY. The Valiant V8 sedan interior is as spectacular as the performance. Individual front seats, contoured, bolstered, thickly foam padded. Each front seat is separately adjustable, seat height and back angle can be tailored for your most comfortable position. Rear seat trim design carries through the theme of individual comfort for passengers and also has a folding centre arm-rest. Upholstery is luxurious metallic sponge-vinyl. Your choice of colours includes a dramatic black ensemble. Doors and centre pillars fully trimmed. Carpets are lush and carpeting is applied to bottom of doors. Equipment is complete... and practical. Heater with adjustable temperature and air flow controls, demister, windscreen washers. Prismatic interior rear-view mirror, courtesy light switches all doors, cigar lighter, visor vanity mirror, arm rests all doors, coat hooks, ashtrays in instrument panel, floor console and front seat backs.



26½ CU. FT. OF ALL USABLE LUGGAGE SPACE—Luggage boot fully lined, carpeted and has courtesy light. Whitewall tyres 6.95 x 14, extra low profile, and with trim rings. Rear springs engineered for the added engine torque yet still preserve the Valiant smoothness of ride. Rear axle has heavy duty differential, rear axle ratio 3.23 : 1.

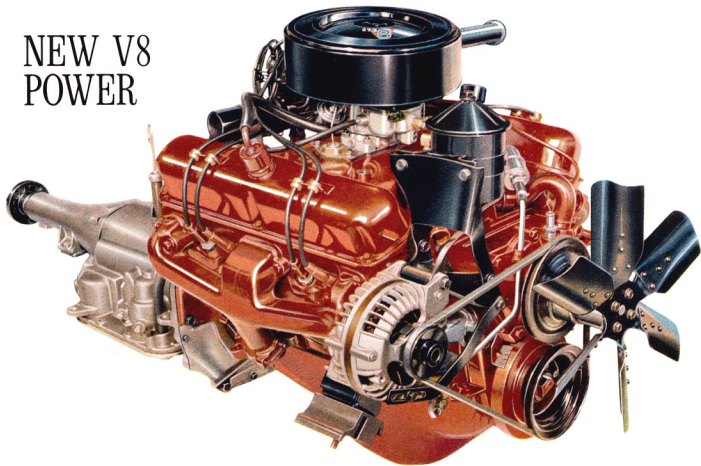


FLOOR CONSOLE GEAR SELECTOR. The 3-speed TorqueFlite automatic is designed for the V8 performance characteristics. Gear selection made with a short, sports-type lever in a floor console. Lever is spring-loaded so that it automatically enters the selected gear "gate". Gear indices are illuminated for easy recognition at night.



LIMOUSINE-STYLED ROOF. As a dramatic, distinctive styling feature of the sedan, the normal steel roof is covered with a special exterior quality vinyl. This material has been thoroughly tested under Australian conditions. Its durability is amazing. The "Diamondite" acrylic enamel finish for the bodywork includes sparkling metallics.

NEW V8 POWER



The problem of providing a high performance V8 engine for Valiant was to produce a design that was compact, had a low profile, and to save weight so that the excellent "balance", ride and handling of Valiant would be retained. All this was achieved mainly through the development of brand new foundry and core-making techniques. The engine is a 273 cu. in., 90° V8, with a compression ratio of 8.8 : 1, developing 180 B.H.P. at 4,200 r.p.m. (note the low engine revs.), and 260 lb.ft. torque at only **1,600 r.p.m.** These specifications provide a very fine, flexible V8 performance.

SPECIFICATIONS IN BRIEF

DIMENSIONS. Wheelbase 106"; Max. overall length—Sedan 187.9" Safari 188.71"; Track—front 55.9", rear 55.6"; Weights—Sedan 2,957 lb., Safari 3,111 lbs.

ENGINE. 90° V8; Bore 3.63"; Stroke 3.31"; Displacement 273 cu. in.; Comp. ratio 8.8 : 1; Max. B.H.P. @ r.p.m. 180 @ 4,200; Max. torque @ r.p.m., 260 lb.ft. @ 1,600.

ENGINE (General). Cylinder heads have wedge-shaped combustion chambers with spark plugs placed at highest point within domes. Valves arranged in-line, actuated by rocker arms, mounted on single rocker arm shafts. Rocker arms interchangeable for either intake or exhaust valves. Pistons of cam-ground aluminium alloy have flat heads, two steel inserts cast into each piston skirt; expansion is at the same rate as cylinder bore. Pistons have 2 compression rings plus a three-piece oil ring with 2 chrome plated steel rails separated by an expanding spacer. This gives excellent oil control. Two-barrel carburettor. Crankshaft has 5 bearings. Cooling system cap. 28 pints. Fan 6-blade, 18 in. dia. Alternator 35 amp.

BRAKES. Duo-servo, self adjusting, hydraulic. Tot. effective area 153.5 sq. in. Finned brake drums front and rear. Power brakes standard.

SUSPENSION. Front—Independent, lateral—non-parallel control arms with torsion bars. Rear—Longitudinal leaf springs of increased capacity.

TORQUEFLITE "8" AUTOMATIC TRANSMISSION. Specially engineered for V8 performance while retaining the inherent characteristics of smoothness, silence and fast change. Transmission oil water-cooled with own oil filter. Gear selector lever, floor console mounted. (Sedan only). Gear ratios are—

"R" Reverse gear—2.2 to 1 ratio.

"N" Neutral.

"D" 1st and 2nd and Drive—2.45, 1.45, 1.00 to 1.

"2" 1st and 2nd—2.45, 1.45 to 1.

"1" 1st—2.45 to 1.

WHEELS AND TYRES. Wheels—steel disc, double-sided Safety Rims. Tyres (both sedan and Safari)—6.95 x 14 x 4 extra low profile, white wall. Wheel trim rings standard.

CAPACITIES. Cooling system 28 pt.; Fuel tank 14.3 gall. Crankcase capacity with oil filter, 8.3 pt. Transmission 12.5 pt. Rear axle 2.25 pt. **WARRANTY**—12 months or 12,000 miles.

EQUIPMENT. Heater/demister; Windscreen washers; Prismatic interior rear-view mirror; Carpeted kick pads; Arm-rests all doors; Courtesy switches all doors; Luggage compartment light (sedan only); Roof rack (Safari V8 only); 2-speed windscreen wipers; Cigar lighter; 2 Sun visors (passenger visor with vanity mirror); Coat hooks; Seat belt anchorage points; Rear seat centre arm-rest (sedan); Front seat centre arm-rest (Safari); Wheel trim rings; Dual horns; Carpeted luggage boot (Sedan); Power Brakes; Reversing lights; Air deflectors (Safari).



**CHRYSLER
AUSTRALIA LTD.**

The policy of Chrysler Australia Limited is one of continual improvement in design and manufacture, wherever possible to assure a still finer car. Hence, specifications, equipment and prices are subject to change without notice.