

MORE TO LIKE THAN EVER



**MAKE THE MOVE THAT MAKES THE DIFFERENCE..MOVE UP TO VALIANT!**



# Valiant



**STYLING THAT KEEPS VALIANT AHEAD ISN'T ALL THAT'S NEW..**

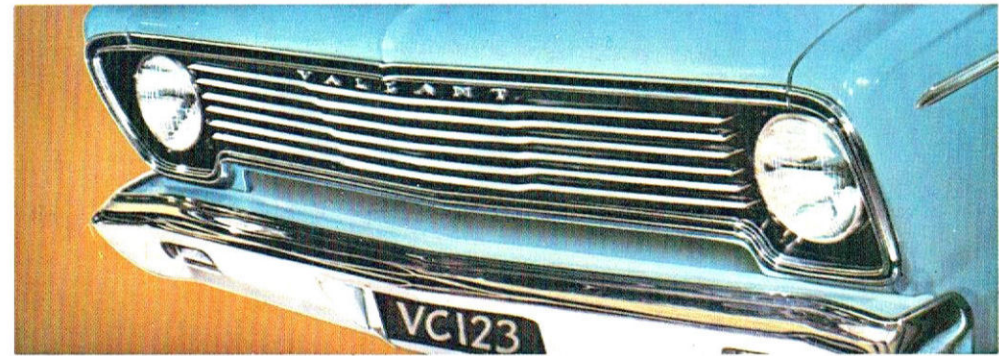
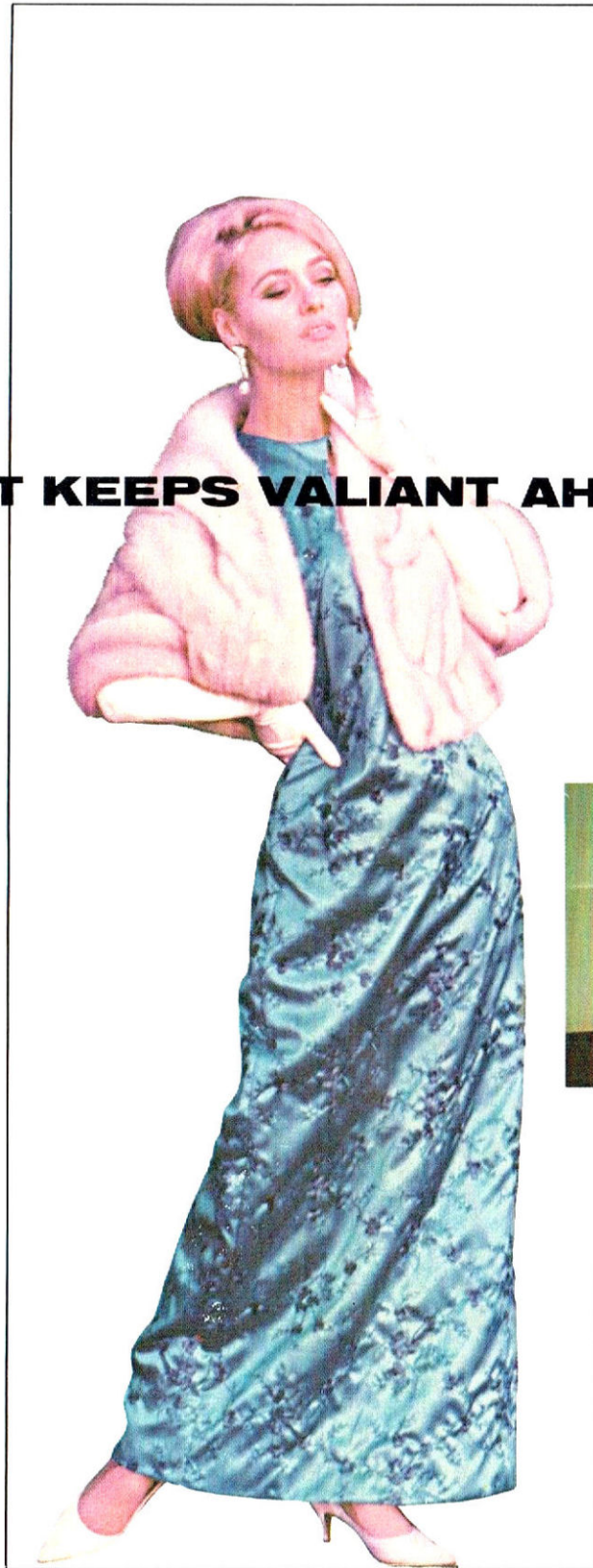
This new shape of Valiant value is going to be even harder to resist. Fashioned with flair, Valiant has a new sleek symmetry of line that is the perfect blending of function, beauty and individuality. The photos on these pages tell the story far more convincingly than a thousand words.

In this new car you will find all the qualities that have made Valiant the success it is, with each quality now developed to its highest degree of technical perfection. This is indeed a vintage year for Valiant . . . and for you.

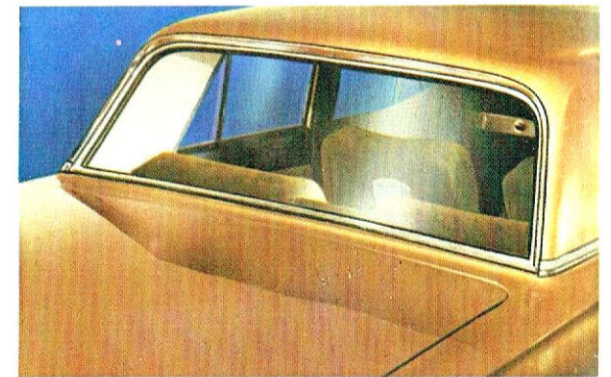
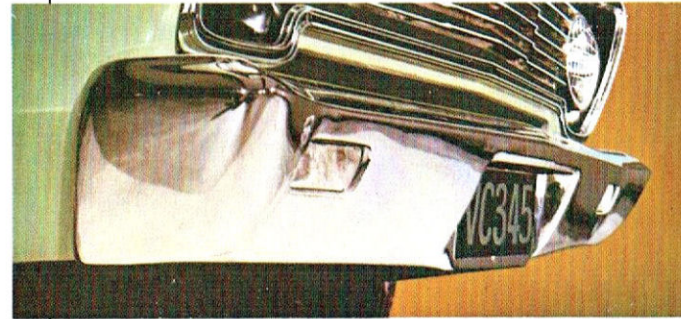
To fit your needs, and your budget, Valiant has six car models in the 225 Slant '6' series—each one designed to please people as only Valiant can. A talk with your Authorized Chrysler Dealer will soon show you too that Valiant is as easy to own as it is to envy.

# Valiant

**225**



**BUT WHAT A BEAUTIFUL  
START!**





VALIANT SAFARI AND VALIANT REGAL

**THAT "NEW VALIANT" FEELING LIFTS YOU ... OUT OF THE ORDINARY**

# Valiant

225

The logo for the Valiant 225 features the word "Valiant" in a large, bold, sans-serif font. Below it, the number "225" is displayed in a smaller, bold, sans-serif font. Underneath the number is a stylized triangular graphic composed of three colored sections: a red triangle on the left, a blue triangle on the right, and a white triangle at the bottom.

The "new Valiant" feeling is the difference between basic transportation and enjoying a car that is a prized possession. It is having at your command the flexible power of the thoroughly proven 225 Slant '6' engine (nothing finer in its class); ample reserve of power for steep upgrades, traffic emergencies or to tow a trailer behind, everything done smoothly, quietly, without fuss or strain. This makes a big difference to the life of an engine. Owning a Valiant is to have a generous added measure of safety. Wide tracks for a firm and level "stance" on the road; Exclusive Chrysler double-sided Safety-Rim wheels; Big self-adjusting brakes, Valiant's ride is smooth, level and comfortable because it has the advantage of Torsion-bar front suspension. It is having practical things such as 26½ cubic feet of usable luggage space, and windshield washers now standard equipment. Above all, it is the satisfaction of knowing your Valiant represents top value for the money. The three-speed manual transmission is now synchromesh in all forward ratios. Automatic model has the TorqueFlite 3-speed transmission.





VALIANT, MANUAL OR AUTOMATIC

**FOR PEOPLE WHO WANT ADDED LUXURY IN THE CARS THEY DRIVE**

# Valiant

225

The handsome Valiant Regal 225 provides added luxury and a mark of distinction at a practical, business-like price. Better still, Valiant Regal is a luxury car that holds its high value. From the outside, Regal has distinctive styling touches that mark it from the regular Valiant 225 models. In addition, Regal is available in metallic body colours and has white wall tyres and de luxe wheel covers. Inside it is luxuriously upholstered in printed metallic sponge vinyl, a material so soft yet so durable. Front seats are individually contoured, both front and rear seats have folding centre arm rests. Floors are richly carpeted, doors have carpeted kick pads and door-sill step plates. Equipment is complete and practical. Concealed heater and demister with controls on the instrument panel, Prismatic anti-dazzle rear view mirror, windscreen washers, courtesy switches all doors, trunk compartment light. Luxury like this, plus TorqueFlite 3-speed automatic transmission and Valiant 225 performance that is so hard to match in any class make a combination that will be specially pleasing to people who used to spend a lot more for a prestige car.



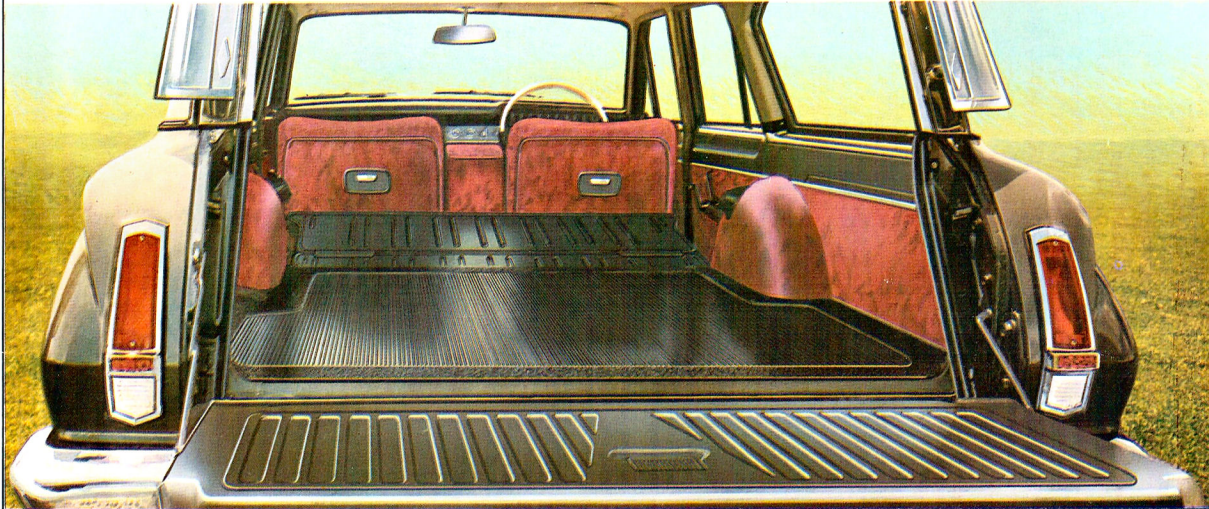
VALIANT REGAL AUTOMATIC

**ROOM FOR LOTS OF LIVING IT UP... PLUS VALIANT VALUE TOO!**

# Valiant

225

A Valiant Safari or Regal Safari are the station wagons that make every outing a pleasure, not a project. They will take you everywhere with that typically Valiant ease, comfort and safety, and towing a caravan or boat doesn't cramp your style. To fold down the rear seat is a simple, one-step operation and gives a full seven feet length from the rear of the front seat to the inside of the tailgate. Room for a comfortable bed or all the gear you want to stow. Tailgate is wide, sturdy and gives added load length if needed for surfboards or casting rods. Rear window winds down into tailgate, and can be locked in any desired position if added ventilation is needed. With rear window fully or partly up, tailgate cannot be opened from the inside—a safety feature if small children are riding in the back. Roof has full length drip gutters including a gutter over the tailgate opening. The Valiant Safaris are trimmed and equipped as their sedan counterparts . . . Because of the folding rear seat, Regal Safari has a front centre arm rest only. Air deflectors are mounted on rear window pillars. Body side panels in rear compartment are trimmed to match upholstery.

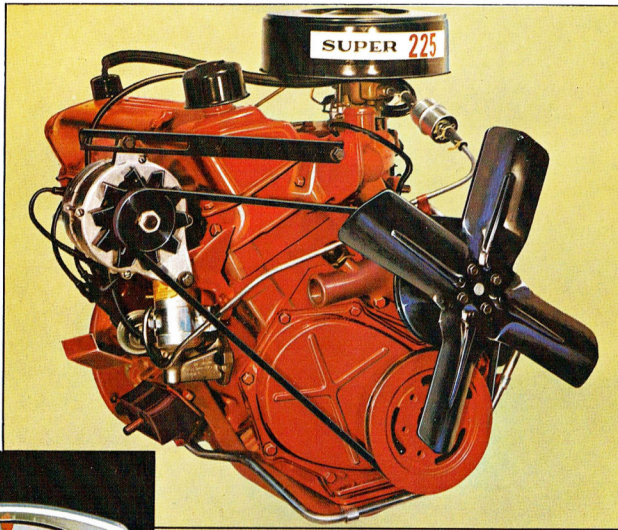




VALIANT SAFARI AND REGAL SAFARI



**THE POWER TO PLEASE.** Valiant's 225 Slant '6' engine provides the full measure of power for a car of this size. This means safe driving, the owner always has something in hand for emergencies. It means effortless performance too. On long trips or in hilly country the engine is always working well within its capacity. Flexibility in all speed ranges, from "get-away" at the traffic lights to open highway cruising is another Valiant 225 characteristic. Maximum engine torque of 215 lbs. ft. is developed at only 2,400 r.p.m. Smoothness and quietness are still further features. Total crankshaft bearing area is an exceptionally high figure, and there is also a vibration damper. Slanting the engine has made possible very high efficiency manifolding. Intake manifold has six individual branches which feed an even fuel mixture to each cylinder. This helps smoothness and economy. An alternator is standard fitment and has a big advantage over a generator. It means the battery is being charged even when the engine is idling . . . the result, better starts, longer battery life.

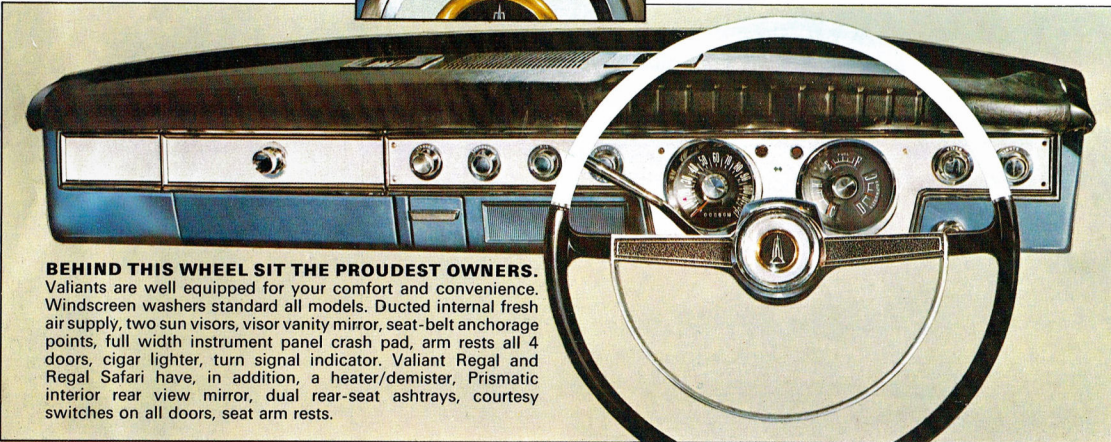


**TORQUEFLITE 3-SPEED AUTOMATIC**

The essentials of automatic driving are an engine with ample reserve power, which retains its "punch" over a wide speed range plus a superbly designed transmission. Valiant has all these. The result, brilliant performance, and the ultimate in driving ease. Gear changing is smooth, lightning fast . . . As TorqueFlite can be held in the "2" (Intermediate) or 1 (low) range it's safer for towing trailers. There's no chance of unexpected shifts. A parking position on the quadrant locks the unit.



**3-SPEED MANUAL TRANSMISSION IS SYNCHRO-MESH ON ALL FORWARD RATIOS.** This provides a big advantage particularly if a change to first gear is desirable for driving in heavy traffic, passing on steep hills, or when towing a caravan, boat or trailer. Gearshift lever is mounted on steering column.



**BEHIND THIS WHEEL SIT THE PROUDEST OWNERS.**

Valiants are well equipped for your comfort and convenience. Windscreen washers standard all models. Ducted internal fresh air supply, two sun visors, visor vanity mirror, seat-belt anchorage points, full width instrument panel crash pad, arm rests all 4 doors, cigar lighter, turn signal indicator. Valiant Regal and Regal Safari have, in addition, a heater/demister, Prismatic interior rear view mirror, dual rear-seat ashtrays, courtesy switches on all doors, seat arm rests.

**"ENGINEERED BY CHRYSLER"  
HAS NEVER MEANT MORE IN  
TERMS OF EXTRA BENEFITS  
TO YOU**



**26½ CUBIC FEET OF LUGGAGE SPACE.** The Valiant luggage boot is long and high and wide and has a low loading height—no trouble about stacking big cases, every inch inside is usable space. Spare tyre is concealed under boot floor. Boot lid is counterbalanced. Floor covered by a smart, serviceable rubber mat. Valiant Regal has a luggage boot light.

## VALIANT VALUE STARTS WITH THE FINISH.

There is no finer automotive paint plant than that at Chrysler, and no finer finish in the world than Chrysler's Acrylic Enamel. This gives added depth of gloss and color which last and last despite time and weather. The surface is harder, too, with high resistance to those unavoidable knocks. It takes a lot of time and wear before this finish needs polishing. All you need do is wash or wipe off the dust. A very attractive color range is available for your selection including sparkling metallics for Valiant Regal and Regal Safari.



# Valiant STABILITY AND SAFETY

**VALIANT'S "TWIST" EXPERTS—FRONT TORSION BARS.** Valiant has a distinctive riding motion. It is level, gentle, there is no sudden lurch on corners, no abrupt "nose dive" with normal braking. This is due to torsion bars combined with Valiant's advanced front-end suspension geometry and balanced with special shock absorbers. Torsion bars give a better ride than coil springs. They react faster and bounce less.

**DOUBLE-SIDED SAFETY-RIM WHEELS.** In every aspect of Valiant design, Chrysler has put your safety first. Another case in point is the Chrysler-developed Safety-Rim wheel. This guards against the possibility of a tyre twisting off the rim in case of a sudden accident to the tyre and the subsequent loss of steering control. Two protective ridges in the wheel rim hold the two tyre beads in place. In Valiant, if you do get tyre trouble, the beads will stay on the rim. Anything less than double-sided Safety-Rim wheels is only a half measure of safety.

**BIG SAFE BRAKES.** Valiant brakes are duo-servo hydraulic and have the outstanding total effective

area of 153.5 sq. ins. Brakes are self-adjusting to take care of eventual lining wear. Periodic service adjustments are not needed.

**SAFETY IN SO MANY OTHER WAYS.** In Valiant's Unibody construction, every component and sheet metal panel is a functional part of the all-welded steel shell providing maximum strength without superfluous weight. All round vision for the driver is outstanding, the full width rear window being a decided asset for rearward vision. Reversing lights are standard on all models. Two-speed electric windshield wipers with ample power have a safe, wide field of operation. Windscreen washers are standard on all models.



## SPECIFICATIONS

**DIMENSIONS — Sedans.** Wheelbase 106"; Track—front 55.9", rear 55.6"; Overall length 188.25"; Overall width 69"; Height 55".

**DIMENSIONS — Safari and Regal Safari.** Wheelbase 106"; Track—front 55.9", rear 55.6"; Overall length 188.98"; Overall width 69"; Overall height 55"; Floor length, front seat back to tailgate lowered 105.3"; Floor length front seat back to inside of tailgate closed 83.8".

**ENGINE.** Type—6 cyl. in-line, O.H.V. 30 deg. inclined; Bore 3.40"; Stroke 4.125"; Displacement 225 cu. ins.; Compression ratio 8.4 : 1; B.H.P. @ R.P.M. 145, @ 4000; Torque @ R.P.M. 215 @ 2400; Taxable H.P. 27.7.

**ENGINE (General).** Combustion chambers are in-line wedge shaped type, with large valves for efficient engine breathing. Exhaust valves have four bead-keepers, helping valves rotate, distributing wear evenly. Pistons, light-weight, tough aluminium alloy with two compression and one oil control ring. Crankcase ventilating system is a closed type with flow-control valve, which also gives backfire protection and eliminates air pollution.

Single downdraft carburettor is calibrated to supply the exact fuel mixture for economical performance. Small diameter carburettor throat exercises better control of the fuel-air mixture. Automatic choke. Full-flow oil filter.

**BRAKES.** Duo-servo, self-adjusting, hydraulic. Total effective area 153.5 sq. ins. Cast iron brake drums. Parking brake operated by "T" handle, under R.H. Side of instrument panel; Operates on rear wheels.

**STEERING.** Linkage — Parallel idler arms with equal length tie rods. Gear — Worm and ball nut; Turning circle 37.1 ft.

**REAR AXLE.** Hypoid-semi floating, 2 pinion differential. Gear ratio 3.23 to 1.

**CAPACITIES.** Cooling system — 18 pints; Fuel tank 14.3 gallons; Crankcase (less oil filter) 6.6 pints; Crankcase (inc. oil filter) 8.3 pints; Transmission — manual 4.1 pints, automatic 13.3 pints; Rear Axle 2.2 pints.

**TRANSMISSION (TorqueFlite).** The TorqueFlite transmission combines a torque converter and an automatic planetary gearbox. The torque converter extends torque multiplication over a wide range of engine speeds.

Depending on the drive range selected, the throttle opening and the car speed, the control valves will cause hydraulic pressure to engage or release the clutches and apply or release the bands thus causing the planetary gear set to provide three forward and one reverse ratios. Transmission oil is water-cooled and has its own oil filter. Gear ratio and gears used—

"R"—Reverse gear: 2.2 to 1 ratio.

"N"—Neutral.

"D"—1st, 2nd and Drive; 2.45, 1.45, and 1.00 to 1.

"2"—1st and 2nd; 2.45, 1.45 to 1.

"1"—1st; 2.45 to 1.

**TRANSMISSION (Manual.)** 3-speed and reverse, synchromesh all forward ratios. Ratios: 1st—2.95 to 1, 2nd—1.83 to 1, 3rd—1.0 to 1, Reverse—3.8 to 1.

**SUSPENSION.** Front — Independent, lateral, non-parallel control arms with torsion bars. Rear — Longitudinal leaf springs.

**WHEELS AND TYRES.** Wheels — Steel disc. Safety rims. Tyres — Valiant Regal—6.45 x 14 x 4 ply, white wall. Valiant — 6.45 x 14 x 4 ply, black. Regal Safari — 6.95 x 14 x 4 ply, white wall. Safari — 6.95 x 14 x 4 ply, black.

**EQUIPMENT.** Valiant and Safari, Manual and Automatic. Front compartment ashtray; front door courtesy lights; dual sun visors; visor vanity mirror; arm rests all doors; foot-operated windscreen washer; coat hooks; instrument panel crash pad; cigar lighter; turning signal and back-up lights; seat-belt anchorage points. (Valiant Regal and Regal Safari.) In addition to the above items, these models have: carpeted floors; front and rear seat centre arm rests (Safari front only); heater/demister; prismatic interior rear view mirror; courtesy switches all doors; luggage compartment light (Regal); carpeted kick pads on doors; door sill step plates; white-wall tyres; de luxe wheel trims; rear deflectors (Safari only); Dual horn



## NOW-MAKE THE MOVE THAT MAKES THE DIFFERENCE

If you are already a Valiant owner you will find that this new model will fulfil, in every way its promise of even finer motoring . . . even better value.

To those who are considering Valiant for the first time and are analysing the facts and figures, there are some points which we suggest should be kept well in mind.

Firstly, the step-up to a Valiant is money invested not spent. It comes back to you in many ways—Added pride and pleasure of ownership, plus the very practical factor that Valiant's higher value lasts right through to the time when you eventually change it for a newer model. It is, in fact, a short step-up to a big step ahead in value. Why then, settle for less than a Valiant—particularly as this is the best of years to make it yours.



**CHRYSLER**  
AUSTRALIA LTD.

*Specialised Service and Genuine Chrysler  
Parts available Nationwide.*

The policy of Chrysler Australia Limited is one of continual improvement in design and manufacture, wherever possible to assure a still finer car. Hence specifications, equipment and prices are subject to change without notice.