

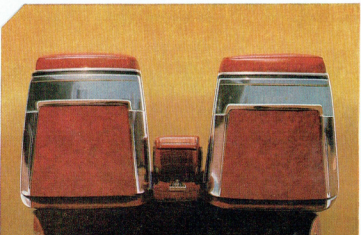
*Executive Suite by*  
**Dodge Phoenix**  
*AUTOMATIC V8*





To an executive seeking relaxation after a tough day, the luxury-laden Dodge Phoenix is instant relief. Just to sit in this car is to ease the tension of mind and muscle. Individual front seats, contoured, form-fitting. Upholstery of glove-like, luxury sponge, vinyl. Thick foam padding to cushion you gently, firmly. Fold-down centre arm-rest. Head-rest on each front seat; passenger head-rest adjustable in height. In addition to the normal fore and aft adjustments, both front seats can be pre-set in height and driver's seat back also pre-set for maximum comfort. Front passenger seat is instantly adjustable to recline to any angle within a 45° arc. Here is added comfort, tailored comfort for the driver and his companion, in a car already outstanding in this regard . . . And if the front seats do all this for you in Dodge Phoenix, just think what the rest of the car will do for you.

## **DODGE PHOENIX IS FOR VERY SPECIAL PEOPLE LIKE YOU!**

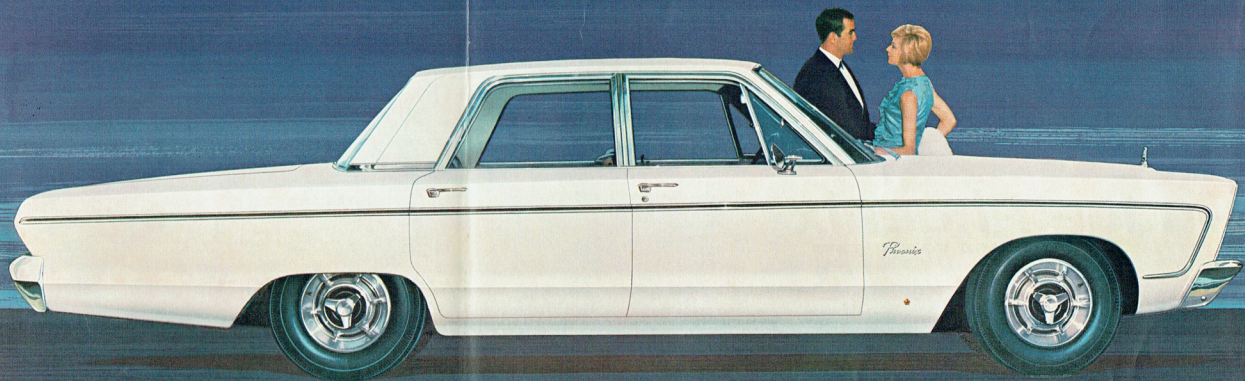


The theme of individual seating comfort for passengers is carried through in the rear compartment, however, with rear centre arm-rest up, the rear seat becomes a wide sofa for three. Dodge Phoenix is carpeted throughout, including the luggage trunk with carpet cover for the spare wheel and tyre. Wind-screen is of tinted glass. Interior fresh air supply is by "no-draught" front vent windows and ducts built into the right and left hand cowl side panels. Heater adjustable for both temperature and air flow. Foot operated windscreen washer, Prismatic interior rear view mirror, external rear view mirror, trunk light and instrument panel map lamp and rear compartment reading lamps are all standard equipment.

A note of luxury and convenience for rear seat passengers. A cigar lighter is located at the back of the front seat center cushion. Cigar lighter for front seat passengers is on the instrument panel. Photo left shows how dramatic styling has been incorporated even with the front seat backs.

Here again, rear seat passengers are coddled just as much as those in front. Reading lights with independent switches are fixed at each of the rear body side panels. And Dodge Phoenix rides so smoothly, so quietly that it is possible to read and concentrate as you ride.

New safety door handles lie flat (prevention against accidental opening) and are incorporated into the door arm-rests. Recesses in the arm-rests allow them to be used as door pulls. Ash trays are also built into each of the rear seat arm-rests. Doors are upholstered to full height.



Certainly, Dodge Phoenix has a lot to tempt you. Consider these "temptations": (1) **Beauty.** Why waste words? Just look. (2) **Excitement.** The supreme authority of 230b.h.p. V8 performance. (3) **Safety and ease of Handling.** Full-time co-axial power steering. Drive with a feather-light touch and still retain the "feel" of the road. Big, self-adjusting brakes. Power brakes standard. Wide tracks, front 62", rear 60.7". Front anti-sway bar. Deeply padded, full width instrument panel crash pad. (4) **The best of all Auto-**

**matics.** Torque-flite 3-speed; so smooth, silent, efficient. (5) **Enduring Beauty.** Chrysler's Acrylic Enamel Finish in a brilliant new color range which includes sparkling metallics. (6) **A Boulevard ride on every road.** Torsion bar front suspension, long rear springs. (7) **Plus** Low rear-deck loading line; 20.8 gallons fuel tank; 7.75 x 14 tyres; Hooded instrument cluster; Curved glass side windows and curved body side contours for added room inside.

**Dodge Phoenix**  
AUTOMATIC V8

## SPECIFICATIONS

**Dodge Phoenix**  
AUTOMATIC  
**V8**

**DIMENSIONS:** Wheelbase 119"; Front track 62.0"; Rear track 60.7"; Overall length 209.8"; Overall width 78.7"

**THE ENGINE:** 90 V8 O.H.V.; Bore 3.91"; Stroke 3.31"; Piston displacement 318 cu. ins.; Taxable horsepower 48.9; Max. B.H.P. at r.p.m. 230 at 4,400; Max. torque (lb./ft.) at r.p.m., 340 at 2,400; Compression ratio 9.0 : 1; Fuel system—2-barrel carburettor. Low friction lock valve rotators on exhaust valves. Crankshaft vibration damper. Closed crankcase ventilation by-pass oil filter. Three phase, full wave rectifying alternator.

**BRAKES:** Hydraulic, internal expanding, duo-servo, self-adjusting. Total effective area 202.1 sq. ins. Swept drum area 328.3. Drum diameter 11". Hand parking brake operates on rear wheels. Power brakes standard.

**SUSPENSION:** Front—Heavy duty, independent, lateral non-parallel control arms with torsion bars. Front anti-sway bar. Rear—parallel longitudinal leaf springs, size 58" x 2.5", 5 leaf. The entire suspension system is rubber-isolated.

**STEERING:** Constant control co-axial power steering. Steering gear ratio 15.7 : 1; 3-8 wheel turns, lock to lock. Linkage—leading parallel idler arms, equal length tie-rods.

**AUTOMATIC TRANSMISSION:** 3-speed torque-converter with planetary gear transmission. Operation by lever on steering column. Lever positions and gear ratios:

- "1" 1st 2.45 : 1.
- "2" 1st & 2nd 2.45 : 1, 1.45 : 1.
- "D" Drive 1st, 2nd & Drive 2.45 : 1, 1.45 : 1, 1.00 : 1.
- "N" Neutral.
- "R" Reverse 2.2 : 1.
- "P" Park.

Transmission water cooled, internal full flow oil filter. Transmission lock by Park "P" position of lever.

**CAPACITIES** (Imp. pints): Cooling system (inc. heater) 35.0; Fuel tank 20.8 (gallons); Crankcase (less oil filter) 6.6; Crankcase (inc. oil filter) 8.3; Transmission (inc. torque converter) 15.4; Rear axle (3.3).

**WHEELS AND TYRES:** Wheels, steel disc, drop centre Safety-rims. Size 14 x 5½ JK. Tyres 5-7.75 x 14 4-ply tubeless.

**EQUIPMENT:** Ashtrays, two in front compartment, two in rear. Crank handle operated front "no-draught" vent wing windows. Fresh air doors in cowl side panels. Fan-assisted, hot water heater unit with temperature and air-flow adjustment controls. Courtesy light switches on all doors. Two sun visors, visor vanity mirror. Prismatic interior rear-view mirror. Arm rests all doors. Roof coat hangers. Glove box with lock. Full width instrument panel crash pad. Foot operated windscreen washers. Cigarette lighters in front and rear compartments. Automatic luggage compartment light. Carpeted floors and trunk floor. Folding seat centre arm rests front and rear compartment. Reclining front passenger seat. Fibre-glass engine hood silencing pad. Back-up lights rear. Carpeted cover for spare wheel. Map reading light. Full wheel covers. Modified-zone anti-glare windscreen. Dual horns. Rear compartment reading lamps. Exterior rear view mirror.

**PARTS AND SERVICE:** Specialised service plus a continuity of genuine Chrysler parts available Nationwide.

*The policy of Chrysler Australia Limited is one of continual improvement in design and manufacture, wherever possible to assure a still finer car. Hence, specifications, equipment and prices are subject to change without notice.*

 **CHRYSLER**  
AUSTRALIA LTD.