

Dodge Utilities

When it comes to a strictly practical work-a-day ute, a true utility truck, Dodge is what you're after.

After more than eleven years of building utes to carry the Australian work load we know what you need.

It's priced to save you money when you buy.

And built to hold its value when you sell.

Some uncommon features our ute has over the common ute.

It has the largest load space in its class.

Built on a long 2819 mm wheelbase, with an extra-wide track for a smooth, stable ride.

And front torsion bar suspension, combined with dual-rate rear springs keep the ride that way, whether the tray is loaded or not.

There's a 2-position tailgate.

Dropped to the first position the tray is extended by 19 inches. Down all the way, you can back up close to load ramps.

A workhorse with thoroughbred features.

The Dodge ute offers more driver features than most in its class.

Take for an example Chrysler's new pressure proportioning valve braking system that minimises rear

wheel lock and skidding in heavy braking situations.

And power assisted front disc-brakes.

Dodge's longer tray length makes short work of most jobs.

With 2169 mm in length it's the longest in its class.

A new column-mounted multi-purpose lever puts control of the headlight flasher, dipper, turn indicators, lane change indicators, 2-speed wipers, and washers right at your fingertips.

Also close at hand are left and right hand fresh air vents that can now be controlled by the driver.

And for more safe driving control there's anti-lift high speed wipers to give you a clearer outlook on the rainiest of days.

Also there's a hazard warning system that lets you activate all four turn indicators at one time.

A door reflector on the driver's side lets you put your best foot forward safely at night.

Power to take loads off your mind.

Dodge comes with the regular-fuel Hemi 3.5 litre engine. Now fitted with automatic choke and for greater fuel economy and power a 2-barrel carburettor. Plus hot air intake for more efficient cold weather starts.

Optional power; the Hemi 4.0 litre

or the big Hemi 4.3 litre both with automatic choke, a new 2-barrel carburettor, electronic ignition and hot air intake. All three engines come with 3-speed column shift manual transmission.

There's hardworking features everywhere you look in the Dodge ute.

A floor-mounted handbrake, for instance.

5.5" double-safety rims, with F78 x 14" x 4 ply tyres. Two external mirrors.

You'll find more features in the X-ray view on the next page.

Extras for little extra.

You can liven up the quiet ride of the Dodge ute with optional radio or radio stereo cassette.

A tonneau cover not only adds to the Dodge ute's clean lines, but adds protection to loads.

A new feature to help your fuel economy—A fuel Pacer. It's a warning light which tells you when you are not driving economically.

Optional engines include the Hemi 4.0 litre and Hemi 4.3 litre six cylinder engines.

And to translate that power to the road you can have the ease of an automatic transmission.

Check the option chart for other available extras.

New column-mounted multi-purpose lever puts control of the headlight flasher, dipper, turn indicators, lane change indicator, 2-speed wipers, and windscreen washers at your fingertips.

Hemi engines have lodged over 5,000,000 owner miles. Standard version is the Hemi 3.5 litre. Optional: The Hemi 4.0 or 4.3 litre.

The floor mounted handbrake drops away when engaged. Nothing to catch clothes on.

The heavy duty tray is completely flat; 2169 mm long; 1516 mm wide; 1158 mm between wheelarches. And the sides are double-wall constructed.

EPD rust protection. Entire body is immersed in a tank of primer, then exposed to electric current which gives a uniform coat of primer in every corner and crevice. Far superior to conventional sprayed-on primer.

Wheelbase: 2819 mm. Rear track: 1491 mm. Smooth, stable handling on a long, wide base.

Chrome steel alloy torsion bars up front. They twist to wring out road shock.

New, improved sliding caliper power assisted disc brakes. The best you can buy. Tremendous fade resistance—greater stopping power.

Spare wheel and jack are out of the way, behind the front seat. Saves space; gives you a place to hide away items you want out of sight.

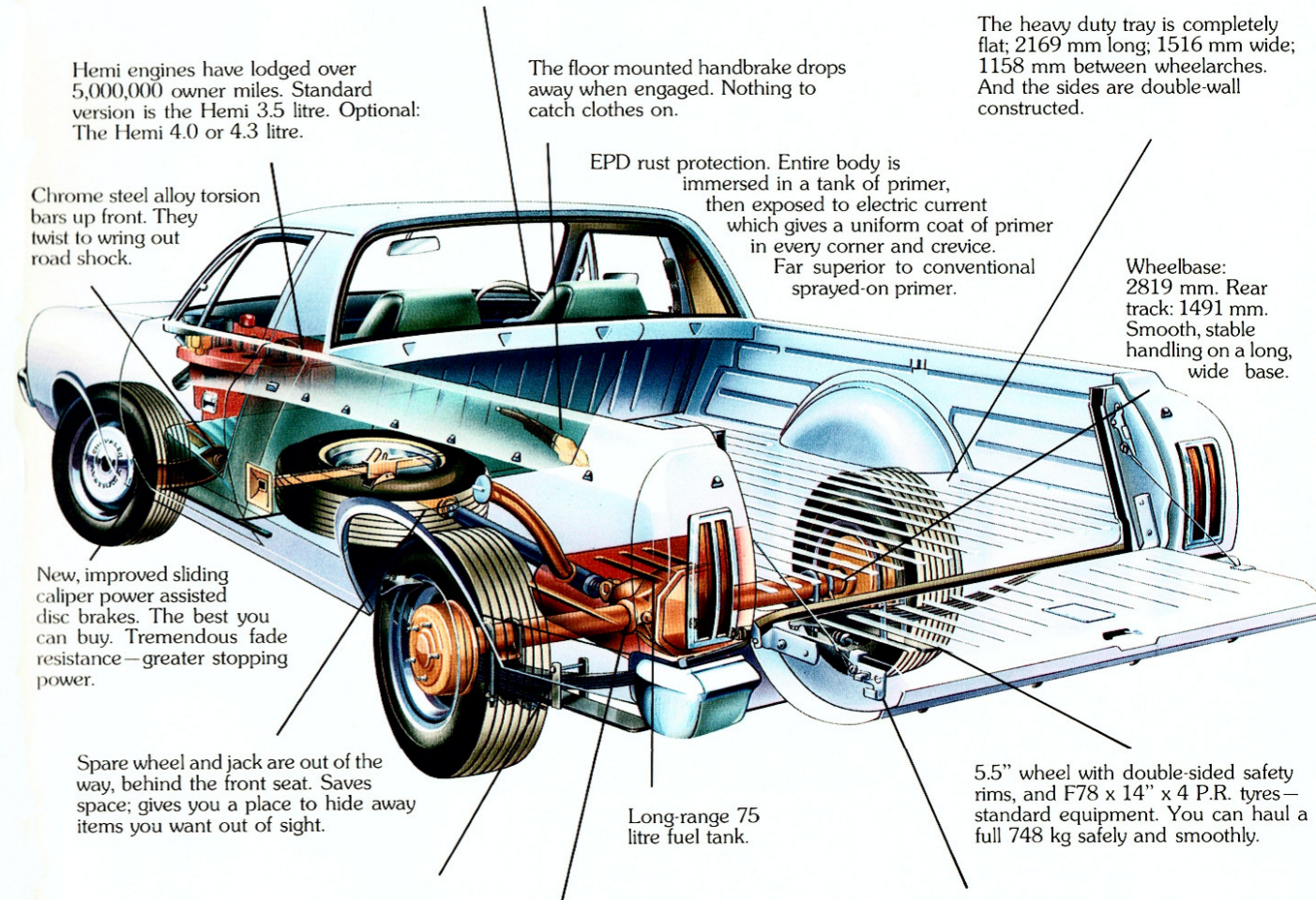
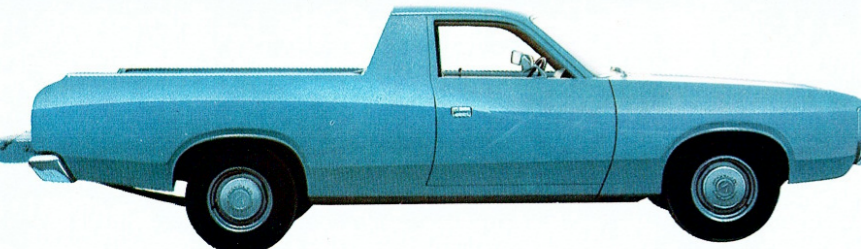
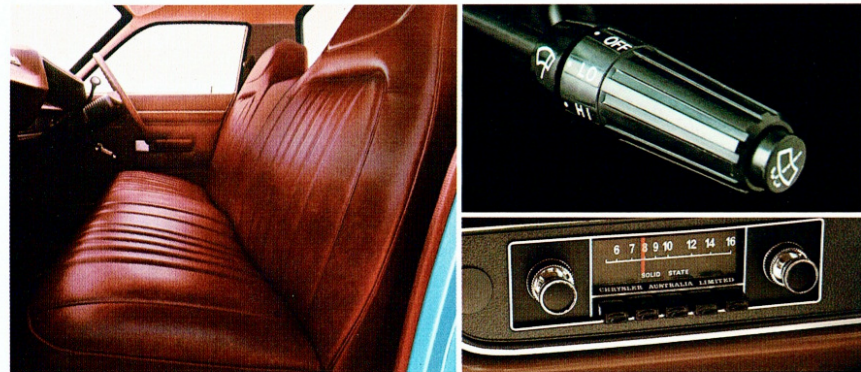
Long-range 75 litre fuel tank.

5.5" wheel with double-sided safety rims, and F78 x 14" x 4 P.R. tyres—standard equipment. You can haul a full 748 kg safely and smoothly.

Dual-rate rear springs, for a controlled ride. No skip or bounce with a full load on the tray. Also: the springs are coated with graphite. Can't ever squeak, because they're self-lubricating.

Semi-floating hypoid rear axle. Heavy duty hauling calls for heavy duty equipment.

Our two-position tailgate. Dropped to position 1, it's like extending your ute by 19 inches. Down all the way, you can back flush against loading ramps for fast, easy loading.



IN BUILDING DODGE, CHRYSLER GO ONE BETTER.

First, Electronic Ignition

Ignition points and condensers have always had the problem of eventually wearing out.

But now, all Dodges (optional 3.5 litre engine) are available with an exclusive electronic ignition system.

The condenser and points have been eliminated. So they'll never need to be replaced.

Spark plug life is extended. And the timing won't have to be touched for 80,000 kilometres.

But most importantly, the electronic ignition delivers 35% more starting voltage for sure starts in wet and cold.

And helps to ensure efficient combustion.

Next, Torsion Bar suspension, and unibody construction.

Torsion bar suspension has been a feature of Dodge since it was first introduced. And so has unibody construction.

The two systems complement each other.

Torsion bars capture the energy of road shock with a twisting action.

In the event of a bad pothole causing a violent shock, any vibration runs up against unitized construction.

There are no body bolts to shake loose or rattle.

Thousands of welds form an incredibly strong unit . . . like an air-frame.

Hot Air Intake

This device simply pre-heats air before being mixed with fuel in the carburettor.

If you combine this Hot Air Intake with Dodge's Hemispherical combustion chambers, it results in more efficient combustion and a minimisation of exhaust emission.

Painting with electricity.

The Electrophoretic dip is the process used to prime all Dodge bodies.

The body is placed in a tank-full of primer which has an electric current running through it.

It greatly improves rust resistance because the primer holds with the body and penetrates into every little crevice.

Our 12 month/unlimited mileage warranty.

Chrysler are always out to build better cars . . .

And now there's further proof.

All Dodge's are now covered by a 12 months/unlimited mileage warranty.

So you can drive as far as you want in

the first year with full warranty protection.

We're the first Australian car manufacturer to show this kind of confidence in its products.

DIMENSIONS, WEIGHTS AND CAPACITIES

Overall Length: 4940 mm (194.5"). Overall Width: 1885 mm (74.2"). Overall Height: 1402 mm (55.2"). Wheelbase: 2819 mm (111.0"). Track: Front—1481 mm (58.32"). Rear—1491 mm (58.72"). Turning Circle: 11.8 metres (38.6 ft.). Fuel Tank Capacity: 75.0 litres (16.5 galls.). Kerb Weight: 1379 kg (3040 lb.). Gross Vehicle Weight: 4 ply Tyres—2127 kg (4690 lb.), 6 ply—2141 kg (4720 lb.). Tray Dimensions: Length (Max.) 2169 mm (85.4"). Width (Max.) 1516 mm (59.7"). Width (Between Wheel Arches) 1158 mm (45.6"). Depth 396 mm (15.6"). Tailgate Width 1189 mm (46.8").

TRANSMISSION

Manual 3-speed column shift standard. Automatic 3-speed column shift optional.

CLUTCH

Type: Single Dry Plate with Diaphragm. Pressure Plate. Size: 241 mm (9.5") diameter.

REAR AXLE

Type: Semi-Floating Hypoid Gear drive.

SUSPENSION

Front: Independent with torsion bar and dual action hydraulic telescopic shock absorbers. Rear: Leaf springs with dual acting hydraulic telescopic shock absorbers.

STEERING

Manual steering: Recirculating ball and nut. Turn lock to lock—4.5.

BRAKES

Power boosted with Pressure Sensitive Proportioning Valve. Front: 279 mm (11.0") diameter disc. Rear 229 mm (9.0") diameter drum. Tandem master cylinder.

WHEELS AND TYRES

Wheels: 14" x 5.5" JJ. Tyres: F78S14 x 4 Ply BSW.

INSTRUMENTATION

Speedometer, Odometer, Ammeter, Fuel gauge, Oil Pressure warning light, Highbeam warning light, Turn signal indicators.

COLOUR INFORMATION

Separate literature is available.

STANDARD SAFETY FEATURES

Retractable seat belts. 360° energy-absorbing steering column. Tandem master cylinder, power assisted braking system, front discs. Pressure proportioning valve. Flush fitting door handles, side impact protected, non override. Door reflectors. Power operated windscreen washers. Padded steering wheel

hub. Two speed windscreen wipers. Non-glare windscreen wipers arms and "speed" blades. Safety padded sunvisors. Padded armrest, door handles with soft knob window regulators. Cushioned instrument panel (all controls behind steering wheel). Break-away interior rear view mirror. Reversing lamps. Double engine hood latch with interior release. Safety-zone toughened windshield. Double-sided safety wheel rims. Fusible link wiring. Anti-glare recessed instrument panel, with variable lighting. Solid unibody construction. Hazard warning system. Dual rate rear springs.

DODGE UTILITY	
Options	
Tinted gradated laminated windscreen	O
Radio/stereo cassette player	O
Radio—Push button	O
Tonneau cover and hooks	O
F78S14 x 6 Ply BSW tyres	O
Wheel covers	O
Automatic transmission—column shift	O
2.92:1 Sure grip rear axle (N/A with 3.5 litre engine)	O
4.0 litre (245 cu. in.) 6 cylinder engine	O
4.3 litre (265 cu. in.) 6 cylinder engine	O
Electronic Ignition (on 3.5 litre engine)	O
Fuel Pacer	O
Towing package	O

ENGINE DETAILS	6 cylinder 3.5 litre (Standard)	6 cylinder 4.0 litre (Optional)	6 cylinder 4.3 litre (Optional)
Type	6 cyl, In-Line, OHV	6 cyl, In-Line, OHV	6 cyl, In-Line, OHV
Capacity	3523cc (215cu. in.)	4015cc (245cu. in.)	4345cc (265cu. in.)
Compression Ratio	8.0:1	9.5:1	9.5:1
Carburettor	Two barrel with automatic choke	Two barrel with automatic choke	Two barrel with automatic choke
Ignition System	Standard	Electronic	Electronic
Fuel	Standard	Premium	Premium

All product illustrations and specifications are based on authorised information. Although descriptions are believed correct at publication approval, accuracy cannot be guaranteed. Some of the equipment shown on product illustrations is optional at extra cost. Chrysler Australia Limited reserves the right to make changes from time to time without notice or obligation, in prices, specifications, colours and materials, and to change or discontinue models.

